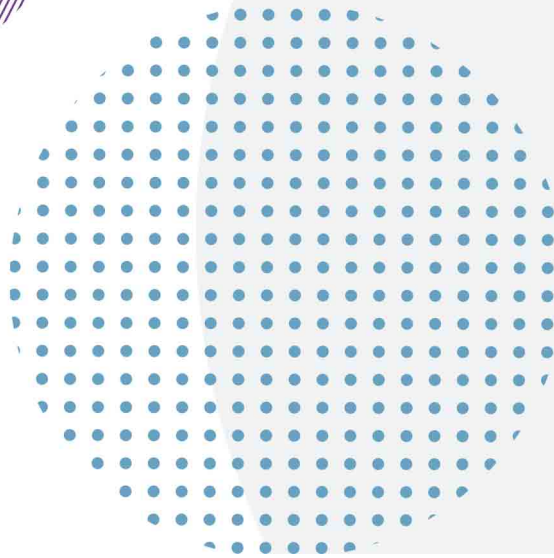
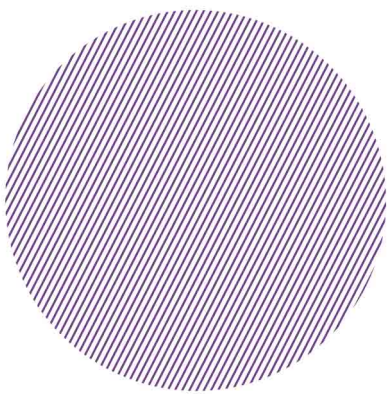


Teaching and Learning Assistant

Recruitment Pack



Contents

Contents	1
Why be part of The Rise Team	2
Job description	4
Person Specification	6
How to apply	7

If you, or someone you know would like this publication in an email, in Braille, large print, Easy Rad transcription or audio tape, please email jobs@ambitiousaboutautism.org.uk.

Why be part of The Rise team

WE'RE DIFFERENT AND PROUD OF IT:

We proudly aim to be the 'best of both worlds' of mainstream and SEND provision – watch our video [here](#).

This looks like:

- ✓ High **ambition** and **aspiration** for all as our students to access a mainstream level curriculum. They'll achieve brilliantly as you support pupils to learn a wide range of topics and texts.
- ✓ A genuine, holistic focus on the student and their **quality of life**: academic and social progress.
- ✓ **Specialist support** with a high adult to student ratio, with adults being autism experts – we provide a lot of training on this, so having no prior SEND experience is not a barrier to employment
- ✓ Specialist **facilities**
- ✓ Lots of **trips!** Our students enjoy about 6+ trips per year including the theatre, cinema, escape rooms, museums, galleries, parks, camping etc.

WORKING TOGETHER:

99% understand our **VISION, MISSION and VALUES**

97% feel **PROUD** to work at The Rise

93% receive the **TRAINING, COACHING and SUPPORT** to develop

93% feel **MOTIVATED**

From our staff survey, June 2022.

IMPACT

It's like reading the report of a totally different child. Subjects he wouldn't engage with in his old school, he's getting really good grades. He's thriving. It's transformed him and our whole family.

Parent, Progress Evening in December 2022.

Our friends and family have all remarked on how much calmer and happier my child is.

Parent Survey, July 2022

Parent Survey, July 2022

My son has done a 360 since attending The Rise. 'Thank you'

Parent Survey, July 2022

I would not be where I am today without this school and you all! I'd never be going to do A-levels at a mainstream college.

Year 11, Results Day August 2022

WORKLOAD and WELLBEING

- Maximum class size is 10
- 2 or 3 TLAs to a class
- Onsite wellbeing each Friday for staff
- Opportunity for progression including into teaching, mental health first aid and behaviour support
- Small school where staff are eager to support one another and work together
- Access to the employee assistance programme
- A job where you feel you make a positive change to young people's futures
- Approachable Senior and Wider Leadership team – open to flexible working requests.

A 'SAY YES' APPROACH TO CPD

- Great speakers which have included Ross Morrison McGill, Tom Sherrington, Jane Evans, Be Happy Project and Jaz Ampaw-Farr
- Well-stocked staff library, always open to suggestions
- Support for training in areas of interest in SEND, Education and behaviour
- Sustained CPD opportunities such as PBS Coaching, Mental Health First Aid, Be Happy Coaching
- Support for masters and other accredited CPD options including Level 5 diplomas.

LOCATION and FACILITIES

- We moved into our school in 2016 and have a softplay area, sensory room and well-equipped gym.



- There is parking onsite and we are a 20 minute train journey from Clapham Junction.
- The gym is well-used by staff members:



PENSION & PERKS

- Local Government Pension Scheme contributions.
- [Perkbox membership](#) including discounted gym membership, coffee, cinema tickets.
- [Cycle to Work](#) and season ticket loans
- [Health Cash Plan](#) to claim back costs a wide range of medical costs including dentistry, physio, chiropractors, optical care.

Job description

Job title	Teaching & Learning Assistant	Team	The Rise School
Job band	Band 2/3	Reporting to	Class Teacher
Hours	37.5 Hours a week	Line manages	Not applicable

Role Purpose:

To deliver high quality teaching, learning and behaviour support using a behavioural approach (PBS) as part of a class team working with autistic children and young people. To support the Class Leader and Transdisciplinary Team in ensuring the efficient and effective running of the class to meet the day to day needs of the pupils.

Key accountabilities and dimensions:

- Contribute and support to the overall vision and values of the school
- Use specialist knowledge and experience to support pupils' learning
- Work as part of a team and assist the class teacher to ensure quality education for the children
- Assist with the planning and delivery of individual support plans (or other pupil-specific plans)
- Provide clerical/administrative support to the assigned teacher, eg. Photocopying, typing, filing and record-keeping
- Monitor and evaluate pupils' progress and maintain pupil records where appropriate
- Be aware of and support school policies and procedures
Be aware of and support difference and ensure that pupils have equality of access to opportunities to learn and develop
- Liaise with parents, carers and professional staff, including transdisciplinary staff, in order to promote the holistic learning objectives of each pupil
- Assist with the arrival and departure of children at the beginning and end of school sessions
- Develop and implement actions that will promote the integration of the pupil with their peers
- Supervise whole classes during the occasional short-term absence of a teacher as times such as PPA and Golden time
- Attend to pupils' personal needs, including social, health, hygiene, first-aid and welfare matters
- Attend appropriate staff meetings and training days/events as requested
- Have the highest expectations of our pupils learning and behaviour
- Be aspirational for our pupils' future after school

Training and professional development

- The jobholder is required to contribute to and support the overall aims and ethos of the school

- All staff are required to participate in training and other learning activities, and in performance management and development, as required by the school's policies and practice

Additional duties:

- Demonstrate a continual commitment to safeguarding and promoting the welfare of children and young people
- To uphold Ambitious about Autism policies to protect and safeguard pupils in order to secure their health, safety and wellbeing
- Demonstrate a continual commitment to the promotion of diversity initiatives and the sharing of best practice in line with Ambitious about Autisms Equality, Diversity and Inclusion policy and procedures
- Ensure the highest degree of confidentiality and data protection of all materials
- Demonstrate the vision and values of Ambitious about Autism in everyday work and practice, upholding the ethos of challenge and support where all pupils/learners can reach their full potential and maximise their engagement in learning
- Ensure all aspects of compliance related to this role are undertaken.

This job description is not exhaustive and reflects the type and range of tasks responsibilities and outcomes associated with the role. The post holder will be expected to also complete any tasks, as requested by the Head teacher.

Person Specification

Role and band competencies	Essential
Specific knowledge, experience and technical skills	
1. Educated to at least GCSE Grade C standard or equivalent in English and Mathematics	X
2. Experience of working with children and young people with autism	X
3. Experience of managing challenging behavior	X
4. Commitment to the principles of positive behavior approaches	X
Personal Attributes	
5. The Rise School is committed to safeguarding and promoting the welfare of children and young people and expects all staff and volunteers to share this commitment	X
6. Good communication both verbal and written	X
7. Ability to communicate effectively with a range of stakeholders	X
8. Ability to work effectively as a member of a Transdisciplinary team	X
9. Good organisation, planning and prioritisation skills	X
10. Ability to work using own initiative	X
11. Ability to solve problems quickly and decisively and able to stay calm in a crisis	X
12. IT literate	X
13. Physically and emotionally resilient in order to work with children	X
14. Good appreciation of health and safety in the workplace, data protection principles and equal opportunities.	X

How to apply

Stage	Timescale
Closing date for applications	20 th May 2024
Candidates informed of outcome of application	Ongoing
Interviews	Thursdays through May 2024

If you would like to find out more about this exciting opportunity, need any further information or wish to have an informal discussion please contact **Ben Lowe** Recruitment Manager – blowe@ambitiousaboutautism.org.uk

Equal opportunities monitoring

Ambitious about Autism is fully committed to equality of opportunity and diversity and we warmly welcome applications from all suitably-qualified candidates. We welcome applications regardless of race, colour, nationality, ethnic or national origins, religion or belief, sex, sexual orientation, gender reassignment, marital or civil partner status, pregnancy or maternity, disability, or age. All applications will be considered solely on merit.

Ambitious about Autism is committed to safeguarding and promoting the welfare of children and young people and successful candidates will be subject to an Enhanced DBS check.



Contact us

The Rise School
Browells Lane, Feltham
Middlesex TW13 7EF

☎ 020 8099 0640

✉ info@theriseschool.com

🌐 theriseschool.com

Follow us

🐦 [@riseschoolUK](https://twitter.com/riseschoolUK)

📷 [@theriseschoolartsdepartment](https://www.instagram.com/theriseschoolartsdepartment)

Ambitious about Autism is the national charity standing with autistic children and young people.

We believe every autistic child and young person has the right to be themselves and realise their ambitions.

We started as one school and have become a movement for change. We champion rights, campaign for change and create opportunities.



Ambitious about Autism Schools Trust is an exempt charity in England and Wales and a registered company: 08335297.

How to find us

We are located on the same site as Spring West Academy.

Public transport

Tube – Hatton Cross, then either 285 or 490 bus to Browells Lane and five-minute walk. 90 bus to Feltham – Leisure West and eight-minute walk

Bus – 285 from Kingston or Heathrow to Browells Lane, 90 from Northolt to Feltham Leisure West, 490 from Richmond or Hatton Cross to Browells Lane, 117 from West Middlesex University Hospital or Staines to Feltham Station, and 235 from Brentford or Sunbury to Feltham Station

Train – 10-minute walk from Feltham station

Travelling by car

We have on-site parking, but this needs to be booked prior to visiting.

