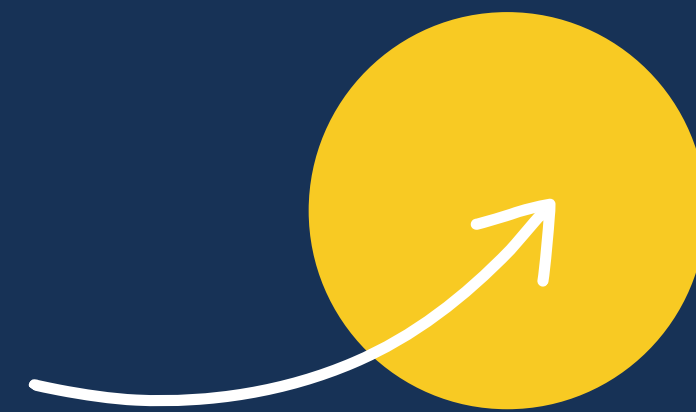




INFORMATION PACK



TEACHER OF PSYCHOLOGY



For August 2026



Thank you for your interest in a teaching position at Regent's International School, Bangkok. We hope that the information you find in our advertisement and this pack will give you a flavour of our school and that this exciting opportunity, professionally and personally, is something you are looking for.

I joined the school as Principal in August 2022 and have been hugely impressed by the professionalism of the staff and the quality of education we provide. Our facilities are well equipped and maintained and we have a thriving school community which enables our students to flourish and grow.

Since my arrival, we have worked as a community to define our purpose and strategic direction. I am confident that, as you find out more about our school, you will learn that we have a close, caring and happy community and that we are united in helping everyone achieve their very best.

Teachers at Regent's are part of an enthusiastic and dedicated team who work well together to create a happy and enjoyable environment for both children and adults. We're committed to the wellbeing of teachers and supporting your development.

We are looking for talented and passionate teachers who are themselves looking for an opportunity to immerse themselves in a culturally rich environment which includes working with boarders and the wider community. In return, we offer a competitive salary and benefits package and the opportunity to develop as a professional.

Please read this information pack and see our website and social media channels for more information. If you would like to find out more about about the school before applying, please contact me or our section Heads for a conversation.

We look forward to receiving your application and learning more about you.



Andy Edmonds
Principal

GUIDING STATEMENTS AND STRATEGIC PLAN 2023-30



OUR PURPOSE AS A SCHOOL



Vision

To bring out the best
in everyone

Mission

Our mission is
to enable all students
to achieve the Regent's
Graduate Profile
and for all in our
community to live
happy, meaningful
and selfless lives.

“ REGENT'S GRADUATE PROFILE

The Regent's graduate is an empowered, life-long learner, driven to achieve their potential. They have the resilience and confidence to overcome challenges. They are emotionally intelligent and fully participate in relationships, employment, neighbourhood and global communities. Above all, they are happy and kind, benefitting from a lifelong association with the Regent's family.



THIS COMES ABOUT AS A RESULT OF:

Students who:

- Are actively engaged in school and make the most of every opportunity
- Welcome the chance to take risks and learn from failure
- Are principled, respectful, honest and show integrity
- Strive to embody the Round Square IDEALS, Discoveries and the IB Learner Profile.

Teachers and support staff who:

- Recognise all students as individuals and care for them
- Support students' passions, talents and personalities, as well as their academic development.
- Have high expectations of themselves and their students.
- Participate fully in the school and find happiness in their work

Parents who:

- Are committed to the Regent's journey
- Encourage their children to flourish creatively, emotionally and academically.
- Are actively engaged in school life and culture
- Communicate effectively as valued members of the school community.

We know where we are going and what we are going to achieve

STRATEGIC PLAN 2023-2030

1

Develop Regent's students as well-rounded, active, global citizens

2

Ensure students achieve personal academic excellence

3

Develop leadership at Regent's as a community attribute

4

Enhance and expand the boarding experience

5

Attract talented, ambitious and committed families to the Regent's community

6

Foster the home and school partnership

7

Recruit, develop and retain the best staff talent

8

Enhance the profile of the school, locally and internationally

9

Enrich the campus experience

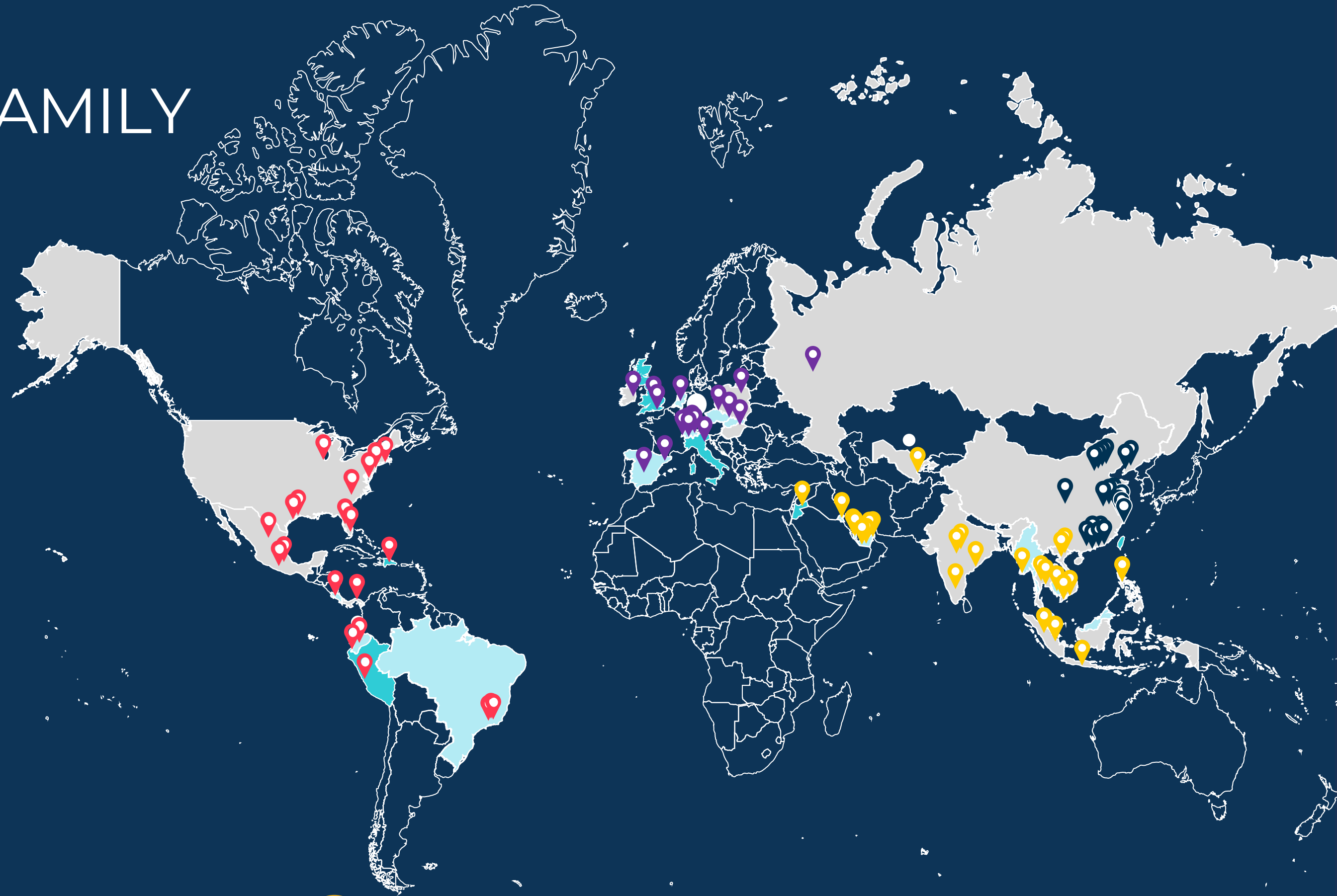
ACCREDITATIONS



OUR GLOBAL FAMILY OF SCHOOLS



**NORD
ANGLIA**
EDUCATION



90+ schools



36 countries



90,000+ students



19,000+ colleagues

OUR COLLABORATIONS

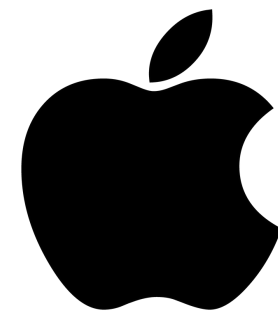
WITH WORLD LEADING LEARNING ORGANIZATIONS



HARVARD
UNIVERSITY



BOSTON
COLLEGE



Juilliard



IB HEADLINES 2025



32

AVERAGE POINTS:
(WORLD AVERAGE 30)



95%

DP PASS RATE:
WORLD AVERAGE 81%



68%

SCORES ABOVE
WORLD AVERAGE



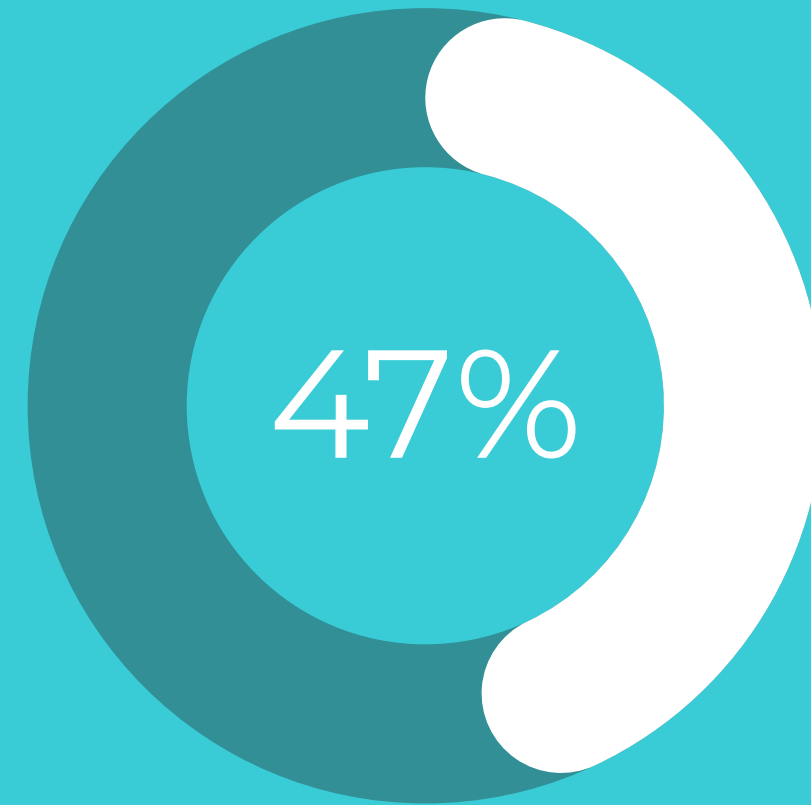
42

HIGHEST
INDIVIDUAL SCORE

IGCSE HEADLINES 2025



A* – C
(5+)



A* – A
(7+)

HEAD OF SECONDARY

Thank you for your interest in the post of Teacher of Psychology at Regent's International School Bangkok. My name is Kirsten Prescott and I have been at Regent's since August 2023 having worked in UK state schools as a senior leader for over two decades.

I am delighted and honoured to have joined the school at such an exciting point in its journey. Through our dedication to achieving the Regent's Graduate Profile for all our students and our commitment to our long term Strategic Plan, I have no doubt that our strong, friendly and exceptionally happy community will continue to thrive, strive for excellence thus bringing out the best in everyone.

My three daughters attend Regent's as students and - as such - I view the school as much through the eyes of a parent and from the perspective of our students as I do a Headteacher. We all love it here and Regent's really is a special place to be. Living and working in beautiful, vibrant Thailand is an added privilege.

This post offers an exciting opportunity for a passionate, driven and committed colleague to join our team in Secondary and play a pivotal part in our journey.

What follows is a description of the key responsibilities of a teacher at our school and a description of the qualities and attributes which are really important to us as a team. We very much believe in a "character first" approach to recruitment and who you are as a person and the qualities you can bring to our community are paramount in minds as we read applications and interview prospective candidates.

I hope you find the information in this pack useful when deciding whether to apply. I would strongly recommend you search for and take a look at our social media feeds on both Facebook and Instagram to get an up to date feel for what our wonderful school is like.

I very much looking forward to hearing from you.



Kirsten Prescott

REGENT'S TEACHER - KEY RESPONSIBILITIES

- Support our students to achieve the Regent's Graduate Profile
- Teach students across all Key Stages in an identified subject and to teach other subjects as required
- Work as a full member of the relevant curriculum team or teams, working with others to disseminate good practice in the department, to create teaching resources and to develop consistent approaches
- Represent and promote the subject
- Have the highest expectations of all students
- Plan and structure sequences of lessons having regard to the schemes of learning and departmental practice which ensure that time is used effectively to cover the curriculum
- Liaise with colleagues to ensure the very best provision and outcomes for our students
- Make effective use of assessment to adjust and review planning to include opportunities for students to reflect on feedback in various forms and improve their work accordingly
- Self-evaluate teaching critically to improve effectiveness



REGENT'S TEACHER - KEY RESPONSIBILITIES

- Communicate effectively with the parents/carers of students as appropriate
- Contribute full to the extra curricular life of the school including participation in boarding life, school trips and visits
- Participate in meetings as appropriate
- Fulfil the duties of a House / Form Tutor as appropriate
- Unequivocally support and promote the values and ethos of Regent's International School
- Fully commit to the promotion of the Round Square Philosophy and IDEALS
- Ensure all school policies are effectively implemented
- Have due regard for safeguarding and promoting the welfare of children and young people and to follow all associated child protection and safeguarding policies as adopted by the school
- Undertake such other duties and responsibilities which can be reasonably expected from the NAE, the Principal or the Head of Secondary



A REGENT'S TEACHER IS:

- Flexible and adaptable
- Intelligent
- Solution focused
- Honest and integrous
- Collaborative
- Industrious
- Empathetic and compassionate
- Passionate, driven and committed to bringing out the best in every member of our school community
- Warm, approachable and ready to build strong professional relationships with all members of our school community

