

Our vision is to become a beacon of educational excellence, transforming the lives of the individuals and communities we serve

Curriculum Leader Musical Theatre & Dance

Reference Number: SCCG1914

Salary: Starting salary £38,014 with incremental progression to £40,684

Advert Closing Date: Midnight Monday 22nd April 2019

Interview Date: W/C 29th April 2019

Location: Pendleton Sixth Form College

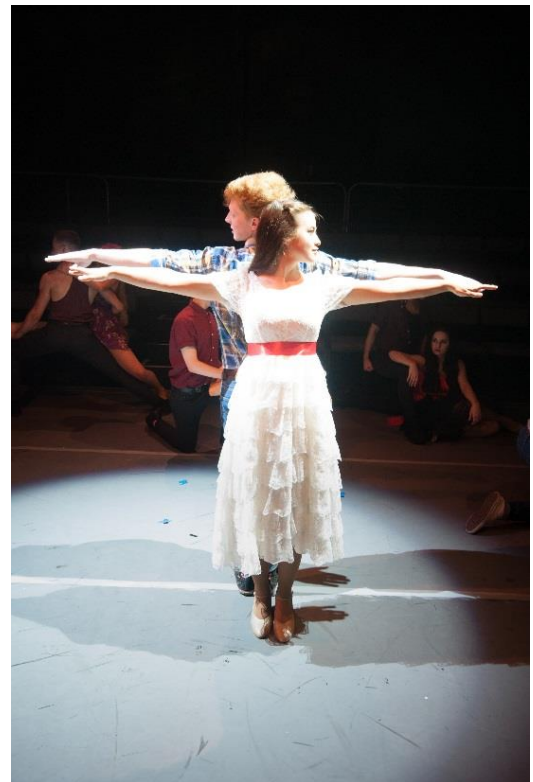
Contract Type: Fixed Term (Maternity Cover)

Hours per Week: 1.0 FTE

As a Curriculum Leader you will be an inspirational and outstanding teacher who promotes the highest levels of achievement for all students. The Curriculum Leader of Musical Theatre & Dance will support the Head of Department and lead across provision of Musical Theatre, Dance and Technical Theatre at the Pendleton School of Theatre at Pendleton Sixth Form College.

You will hold relevant qualifications and experience within the field and I support the team in focusing on increasing recruitment across the courses and working towards College and departmental targets to exceed National Benchmarks and achieve ALPS 3 in all our provisions.

Using your enthusiasm and expertise you will lead, develop and monitor the curriculum so as to maximise the achievement of all students. As part of this role you will be required to teach. The prospective candidate should have a proven track record of teaching across a variety of levels and it is essential that applicants have a genuine interest in this subject area.



About Us

To apply for this job, please complete the registration and online application form via our [website](#).

For more information, please visit our [website](#) and [twitter](#) or if you have any queries regarding this vacancy please email HR@salfordcc.ac.uk

Reason to Join Us:

- Sixth Form College's Associations terms and conditions (195 days) and automatic enrolment on to the Teachers' Pension Scheme
- A range of developmental & career opportunities
- A number of optional Salary Sacrifice Schemes including IT Equipment, Childcare Vouchers & Bikes
- Staff Discounts – including www.staffbenefits.co.uk and NUS Extra
- Various health & wellbeing benefits including discounted gym memberships & confidential staff counselling via CareFirst
- Family Friendly & Flexible Working Policies

Commitment to Safeguarding

As part of our safeguarding commitment we undertake DBS checks as part of our pre-employment procedures on all potential new employees. Appointees will be required to pay for their own DBS checks where applicable to the post.

Head Office | Frontier House | Merchants Quay | M50 3SR | 0161 631 5000 | www.salfordcc.ac.uk