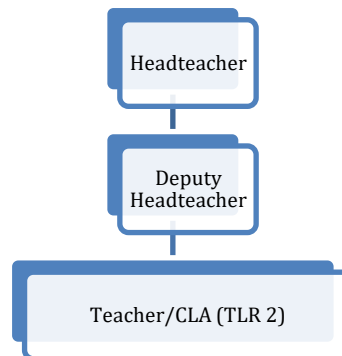


## Designated Teacher for Children Looked After (CLA)

### Structure



### Purpose and Scope

The role will be tightly focused around supporting Children Looked After (CLA) and monitoring the provision for students in receipt of *Pupil Premium Grant* in the school. It will include:

- Observation and analysis of practice in multiple settings
- Monitor progress and attainment of CLA
- Accountability for Pupil Premium Plus grant awarded to Schools in regard of CLAs in the school.
- Reporting back to Senior Leaders on observations, findings, proposed actions and progress
- Providing and/or sourcing CPD related to the needs of CLAs.
- Undertaking training to perform the role
- Completing ePEP documentation in a timely manner
- Attendance at PEP meetings and EHCP reviews for CLAs
- Attendance at CIN meetings where relevant
- Liaison with Local Authority representatives, social workers and carers
- Development and implementation of an action plan to deliver the specific outcomes identified in the PEP.
- Write and review the *Pupil Premium Grant* report and ensure it is posted to the school website after ratification by SLT.
- Monitor progress of students in receipt of PPG
- Any other duties that the Headteacher may reasonably require.

This is a substantive appointment that does not carry any direct line management responsibilities.

### Time

Five additional periods of Non-Contact Time weekly to undertake the role. It is recognised that, from time to time, the requirements of the role, such as meetings, may fall outside the non-contact time allocated. This will be supported in consultation with the Line Manager.

### Remuneration

TLR 2 min