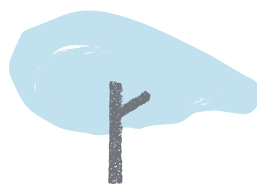




**INTERNATIONAL SCHOOL
FOR 1.5 - 5 YEARS**

BRITISH CURRICULUM
PROGRESSIVE EARLY CHILDHOOD PROGRAMME

SATHON - NANGLINCHI



RAINTREE
INTERNATIONAL SCHOOL



ABOUT US

Raintree International School provides a progressive early childhood programme for 1.5-5 year olds. In a safe and nurturing environment, we combine the British curriculum with a Reggio-inspired teaching philosophy. Above all, Raintree places a special emphasis on fostering **creativity** and **communication**, while developing each unique child within our **community of lifelong learners**.

WHY CHOOSE RAINTREE?

CURRICULUM FOSTERING CREATIVITY

Our progressive early childhood programme is based on the British curriculum combined with the Reggio Emilia approach: through purposeful exploration and play, children are encouraged to inquire, think and collaborate to unfold learning and achieve academic success.

AUTHENTIC LANGUAGE PROGRAMME

Our language rich learning environments are facilitated by experienced teachers in a natural setting, enabling the children to learn languages in a meaningful and effective way. Within the diverse community at Raintree, children grow to become confident communicators and truly global citizens.

GREEN HAVEN IN THE HEART OF BANGKOK

Set in over one rai of beautiful gardens in Bangkok's central district of Sathon, our school offers a unique balance of convenience and open green space to support a variety of outdoor activities and exploration of the natural world.

TEACHING EXCELLENCE

Raintree prides itself on its caring and qualified teachers along with healthy child to staff ratio, ensuring that each child receives the care and attention he or she deserves. Our teachers work closely with parents to empower children to reach their full potential.

PURPOSEFULLY DESIGNED FACILITIES

Child-friendly facilities, purposefully designed in accordance with international early years best practice, provide a safe learning environment that stimulates engagement and inspires learning.

HAPPY LEARNING COMMUNITY

Our child-centric approach celebrates the uniqueness of each child. We aim to nurture a community of learners with a lifelong love of learning.

OUR CURRICULUM

While our learning goals are based on the British curriculum, our teaching approach is inspired by the Reggio Emilia philosophy which encourages children to learn through play, inquiry and their own exploration. Developed in collaboration with a leading early childhood curriculum professor, our holistic programme prepares the children to meet the challenges of an increasingly connected world by helping them develop not only academic competencies but also social skills. Positively equipped with resilience, confidence, well-being, self-regulation and effective communication skills, children become empowered to thrive within a constantly evolving society.

At Raintree, we understand the importance of play in children's holistic development. Play allows the children to build confidence naturally as they experiment, think and form relationships. The Raintree curriculum is therefore designed to foster learning through hands-on discoveries in collaborative play. Every day, the children are given opportunities to engage in a healthy balance of adult-led and child-initiated activities built around art, music, water play, construction play, cooking, drama, and gardening as well as in specialist classes such as physical education and Thai studies.

The environment also plays a vital role in the learning process at our school. We place great emphasis on creating spaces that support and encourage the children's natural curiosity to explore.



OUR APPROACH



BRITISH EYFS



INSPIRED BY
THE REGGIO EMILIA
APPROACH



HOLISTIC
PROGRAMME



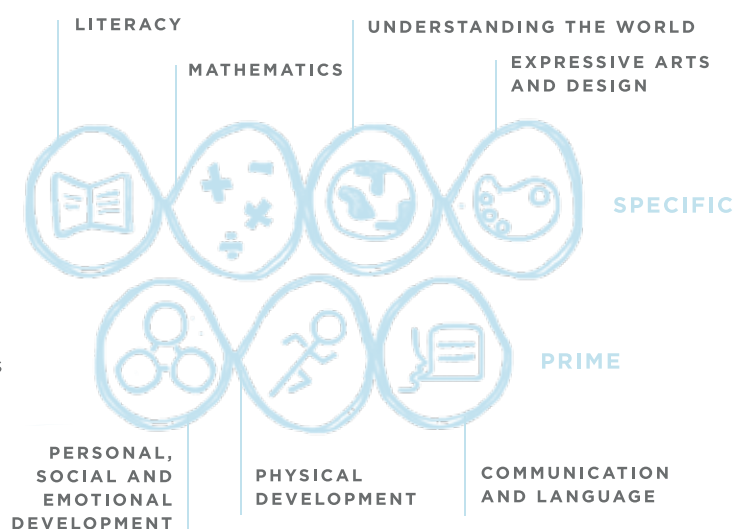
MULTI-LINGUAL
LEARNING ENVIRONMENT



THE 7 AREAS OF LEARNING

The Early Years Foundation Stage (EYFS) sets out seven important inter-connected areas of learning. Of these, three are **Prime** areas crucial for igniting the children's natural curiosity, building their capacity to learn, forming relationships and thriving in their environment.

These three prime areas form the foundation for the remaining four **Specific** areas of learning.



ENGAGING LANGUAGE PROGRAMME

Young children, particularly before the age of 6, are naturally adept at mimicking new sounds, allowing them to learn new languages with increased proficiency. We believe that by immersing children in a language rich environment with our qualified teachers, we can cultivate the children's natural ability to acquire language. Research has shown that children who learn more than one language grow up to be more empathetic and with an increased flexibility of mind, making them more creative and better critical thinkers.

At Raintree, we tailor language exposure according to each family's priority.

Classes are delivered within an authentic language environment, ensuring that the children's exposure to language is of the highest quality.

English is the school's primary language focus, complimented by Chinese, tailored to each child's language priority, with the emphasis on speaking and listening. During the co-teaching study times, the English and Chinese teachers work together telling stories, singing songs and engaging with the children in play-based activities. Co-teaching takes place one session per day in the Nursery, and two sessions per day in the Kindergarten.

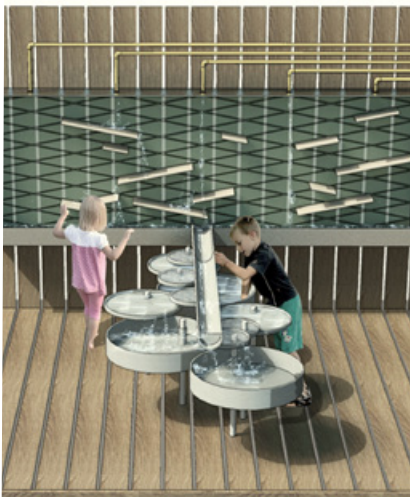
OUR CLASSES

	AGE*	HOURS
NURSERY 1 (3 OR 5 DAYS OPTIONS)	1.5+	HALF DAY
NURSERY 2	2+	HALF DAY OR FULL DAY
KINDERGARTEN 1	3+	FULL DAY WITH OPTIONS OF AFTERSCHOOL CLUBS
KINDERGARTEN 2	4+	FULL DAY WITH OPTIONS OF AFTERSCHOOL CLUBS

SCHOOL DAY FINISHES AT 12:30-12:45 FOR HALF DAY PROGRAMMES, AND AT 14:00 FOR FULL DAY PROGRAMMES

*Age at the start of academic year

OUR SCHOOL OPERATES 3 TERMS PER ACADEMIC YEAR FROM MID AUGUST - MID JUNE, WITH AN ADDITIONAL SUMMER TERM IN JUNE/JULY.



Our school day normally starts at 8:30-9:00 and finishes at midday after lunch for Nursery classes and at 14:00 for Kindergarten classes. We also offer a variety of optional fun and stimulating after-school classes for our Nursery 2 and older children. Our class size ranges from 12-16 children, with one lead class teacher, one teaching assistant, and 1-2 care assistants depending on age group. We are committed to maintaining a healthy child to staff ratio to ensure that we can fully cater to your child's needs.

Our daily schedule is usually comprised of integrated study blocks in which children are encouraged to explore their interests and achieve comprehensive learning goals through activities such as art, music, dance, cooking, construction play, role play and water/outdoor play.

All of our classes are led by qualified early years teachers who are passionate about supporting children to explore their interests and unfold learning experiences.

“

EDUCATION

IS NOT THE LEARNING OF FACTS

BUT THE TRAINING
OF THE MIND TO THINK

ALBERT EINSTEIN

”

INNOVATIVE AND SUSTAINABLE DESIGN

SEAMLESS
INDOOR/ OUTDOOR
LEARNING SPACE

FLOW BETWEEN AREAS
CREATING A SENSE OF COMMUNITY

SUSTAINABLE, AGE-APPROPRIATE SAFE DESIGN

- flushed with natural light and ventilation
- materials that are easy to clean

GREEN AREAS TO ENGAGE
WITH NATURE
AND OUTDOOR FACILITIES

FLEXIBLE AND
SPACIOUS CLASSROOMS

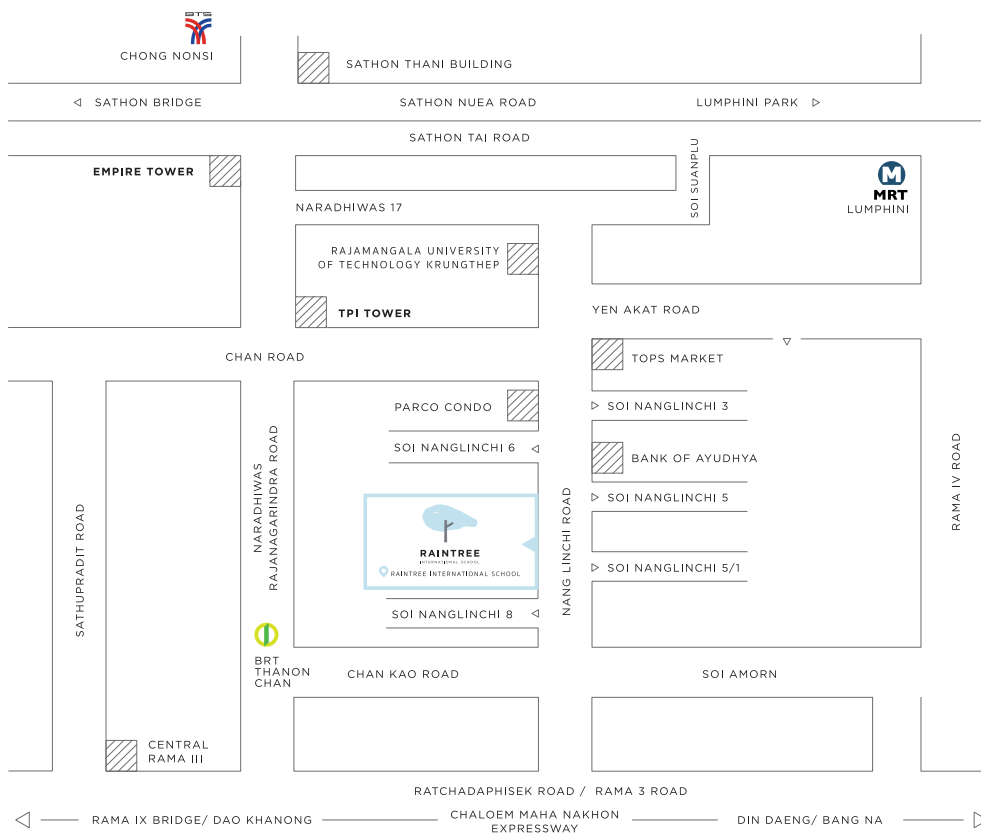
NATURAL TONES TO
PROMOTE CONCENTRATION

OUR FACILITIES

Our school has been carefully designed in partnership with early years' specialists to create a green environment that naturally fosters our learning community. As one of the few purpose-built early years' schools in the heart of Bangkok, our environment is specially designed to inspire learning while providing safe, stimulating, and age-appropriate facilities.

LIBRARY
SENSORY STUDIO
MUSIC AND LIGHT ATELIERS
NURSE CORNER
COOKING STUDIO
ORGANIC FARM AREA

SAND PLAY AREA
INTERACTIVE TREE HOUSE
WATER PLAY STATION
MATHS CIRCLE
CURATED PLAYGROUND



**126 NANGLINCHI ROAD, SATHON,
BANGKOK, THAILAND 10120**

MOBILE: +66(0)63 230 8000
LANDLINE: +66(0)2 287 0667-8

EMAIL: HELLO@RAINTREETHAILAND.COM

f raintreeinternationalschool

WWW.RAINTREETHAILAND.COM



RAINTREE
INTERNATIONAL SCHOOL