



WOLVERHAMPTON GRAMMAR SCHOOL

SPORTS COACH

Required for September 2021. Part-time.

1 year fixed contract. Competitive Salary available.

PROVIDING AN EDUCATION THAT TRANSFORMS LIVES AS WELL AS MINDS

Wolverhampton Grammar School is one of the **oldest schools in the country**, founded in 1512 and as a **selective** and **co-educational independent school** of **720 pupils aged 7-18 years**, it enjoys an **outstanding reputation**. Award winning and judged **"Excellent"** by the **Independent Schools Inspectorate**, this is your opportunity to join a **nationally recognised, forward thinking School**.



Are you passionate about sport and physical activity with technical knowledge in netball and hockey? If you believe in inspiring children and would like to be a member of an inclusive and diverse school community then we want to hear from you.

You will join a community that thrives on challenge and intellectual curiosity, one where your skills will continue to be developed with an individually prepared professional development plan.

The successful candidate will join a community of teachers who excel in delivering a personalised, individual learning experience. You will have access to a range of professional support services including HR, IT, Library Services, Marketing, Communications and Development.

For more information about the School and to download the Job Description and Application form, visit www.wgs.org.uk or contact Marsha Martin telephone: 01902 421326 email: mmm@wgs-sch.net



CLOSING DATE FOR APPLICATIONS: WEDNESDAY 27TH JANUARY, 12^{PM}

INTERVIEWS WILL BE HELD WEEK COMMENCING 1ST FEBRUARY 2021

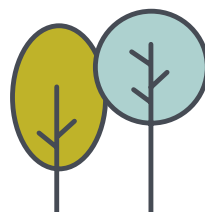


INTRODUCTION TO THE SPORTS DEPARTMENT

Sport is a popular subject at Wolverhampton Grammar School and the Department aims to challenge and motivate students using a range of different sporting techniques. We are a forward thinking department, working towards innovative methods of teaching in all lessons.

Students across the Junior, Senior and Sixth Form take part in physical activity weekly and the extra-curricular opportunities available to students before, during and after school are substantial. Students at Wolverhampton Grammar School enjoy taking part in a range of sporting activities alongside their academic subjects and excel at sporting fixtures against local, regional and national schools.

The Sports Department is housed in its own Sports Centre which is fully equipped with a dance studio, multi-gym and indoor courts for badminton, squash, fives and basketball. Our vast site also includes rugby, cricket, hockey and football pitches, netball courts, an all-weather astro turf and athletics track. Superb grounds and a pavilion provide the perfect showcase for sport and our use of green and open spaces offer the ideal setting for the development of creative and critical thinkers alike.



25
acre site



TES
Independent School
Award Winners

National award winning and judged "Excellent" in all areas by the Independent Schools Inspectorate, as the leading Independent school in the city we enjoy an outstanding reputation and put the wellbeing of our staff and students at the heart of everything we do. Our staff benefit from a comprehensive and personalised professional development and leadership programme.

For more information about the School and to download the Job Description and application form, visit www.wgs.org.uk or contact Marsha Martin telephone: 01902 421326 or email: mmm@wgs-sch.net

CLOSING DATE FOR APPLICATIONS: WEDNESDAY 27TH JANUARY, 12^{PM}
INTERVIEWS WILL BE HELD WEEK COMMENCING 1ST FEBRUARY 2021

JOB DESCRIPTION: SPORTS COACH

Summary of the role:

To lead in the delivery of Games lessons and extra-curricular netball and the ability to assist with hockey.

Contract/Hours of Work:

1 year fixed contract. Part-Time (term time only): 17 ½ hours a week this includes 3 afternoons per week (Tuesday, Wednesday & Thursday) 1pm till 5.30pm and 1 morning (Saturday) 4 hours during term time.

Pay Grade:

Competitive salary available.

Line Manager:

Head of Department.

Main duties and responsibilities:

Promoting and safeguarding the welfare of children and young persons for who you are responsible and with whom you come into contact.

- to coach netball throughout the Autumn and Spring term and either rounders, cricket or tennis in the Summer term, depending on experience/qualifications in chosen summer sport
- to assist with hockey lessons
- to teach netball to all ages and abilities
- to organise competitive fixtures and the administrative duties including: team sheets, transport, catering and court allocation
- to support teaching and learning
- to run/organise and support physical activity and engagement at lunchtimes and afterschool
- to run/organise intra-school competitions
- to issue and collect coaching equipment at the beginning and end of each term
- to lead and direct coaching philosophy
- plan and implement weekly coaching sessions for the School's sports groups and teams as allocated by your line manager
- analyse requirements and design and implement training sessions aimed at improving confidence and technique in required areas
- accompany students to fixtures, both home and away, which include Saturdays. This includes supervising students on the bus for away fixtures
- umpire home and away fixtures
- act as first point of contact for any student or parent query relating to your work as a sports coach and escalate these as appropriate to a member of the Games Staff
- encourage and motivate students both individually and as a team
- attend to any first aid requirement, escalating any problems as necessary to a member of the Games staff.

Pastoral:

You may also be required to undertake such other comparable duties as the Head requires from time to time.

JOB DESCRIPTION: SPORTS COACH

	Essential These are qualities without which the Applicant could not be appointed.	Desirable These are extra qualities which can be used to choose between applicants who meet all of the essential criteria.	Method of assessment
Qualifications	Competent in literacy and numeracy	A First Aid qualification* Current Level 1 or 2 qualification in netball* Umpiring qualification C Award* Hockey Level 1 (advantageous)*	Production of the Applicant's certificates Discussion at interview Independent verification of qualifications *If you do not have these qualifications there could be funding available to undertake further professional development.
Experience	Experience in coaching Experience of working with young people	Experience of coaching in a wide range of environments including schools club and community settings	Contents of the application form Interview Professional references
Skills	Ability to develop and implement high quality, varied and creative coaching sessions focussing on a student-centred approach Ability to inspire, motivate and encourage students through sport Ability to adapt sessions appropriately dependant on the needs of students Excellent communication and interpersonal skills, the ability to communicate with people at all levels Excellent planning and organisational skills	Good level of ICT literacy with knowledge of word processing, spreadsheet and database packages	Contents of the application form Interview Professional references
Knowledge	Good knowledge of specialist sport/s Knowledge and use of a range of PE equipment	A detailed knowledge of school based sports in general	Contents of the application form Interview Professional references
Personal competencies and qualities	Motivation to work with children and young people Ability to form and maintain appropriate relationships and personal boundaries with children and young people Emotional resilience in working with challenging behaviours Positive attitude to use of authority and maintaining discipline Ability to work efficiently on own initiative, under pressure and maintain a high standard of work Confident with a high degree of motivation A flexible attitude to working, willing to work evenings and weekends		Contents of the application form Interview Professional references

The School is committed to safeguarding and promoting the welfare of children and young people and expects all staff and volunteers to share this commitment.