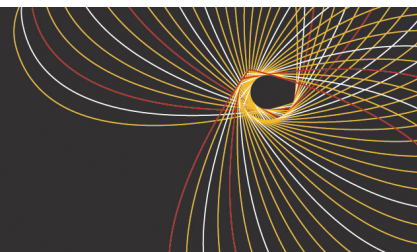




John Henry Newman
Catholic College
Heart speaks to Heart



Raising Standards Leader Job description

Performance and Standards

- To provide a strategic lead on monitoring and evaluating provision of learning and teaching and achievement across Year 10.
- To be familiar with the latest requirements for Ofsted for the provision of learning and teaching and achievement.
- To carry out careful analysis of performance data for all subjects in relation to Year 10 and to identify areas which may be 'at risk' of declining standards.
- To collect internal and external performance data including end of year outcomes.
- To quality assure all Year 10 data collected from subjects throughout the College.
- To ensure that the Performance Data Calendar is followed by all subjects in reporting their current Year 10 performance.
- To work closely with the Heads of Departments and TLR holders 'at risk' of declining standards and to monitor improvement progress regularly.
- To provide accurate and incisive summary reports for the Strategic Director of KS4, the Principal and Governors.

Supporting Departments

- To raise standards for students across Year 10, not just in subjects 'at risk' of declining standards.
- To maintain excellent up to date knowledge of effective strategies for raising standards of achievement for students across Key Stage 4.
- To liaise with other relevant bodies for all aspects of school improvement including Teaching Schools, Pixl and the National College etc
- To ensure that appropriate school improvement advice and guidance is available as requested.
- To provide a strategic direction for all departments on school improvement plans within the college in relation to Year 10 students.
- To ensure all self-evaluations for the provision for Year 10 are accurate and Ofsted compliant.
- To carry out learning walks, departmental reviews, work scrutiny, data checks and validation across the College and supporting Heads of Department and TLR holders in their responsibility for standards in across Key Stage 4.
- To support Heads of Department and TLR holders with post – Ofsted action plans.
- To monitor College post Ofsted action plans and challenge Heads of Department and TLR holders to bring about rapid and sustained school improvement.



Leading Parent
Partnership Award

2017-2020



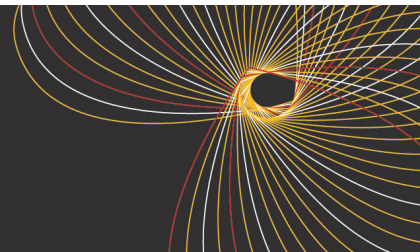
Solihull

**Chelmsley Road Chelmsley Wood Birmingham B37 5GA t: 0121 770 5331 f: 0121 770 0055 e: office@jhncc.org
w: www.johnhenrynewmancatholiccollege.org**

John Henry Newman Catholic College, a charitable company limited by guarantee, registered in England and Wales
Registered office address: Bishop Challoner Catholic College, Institute Road, Kings Heath Birmingham B14 7EG. Company number 07414011



John Henry Newman
Catholic College
Heart speaks to Heart



Strategic Educational Leadership

- To provide inspirational and effective leadership, vision and strategic focus to achieve the highest levels of performance and ensure a culture of continuous improvement and continuous professional development across Key Stage 4.
- To work constructively and positively to shape the strategic direction of Year 10 through planning for effective monitoring, evaluation and reviewing of the plan to secure progress and departmental improvement.
- To think creatively and imaginatively to anticipate and solve problems and identify opportunities.
- As a member of the Strategic Leadership Team, to work constructively and positively with the Strategic Director of Key Stage 4 to shape the strategic direction of Key Stage 4 in College.



Leading Parent
Partnership Award

2017-2020



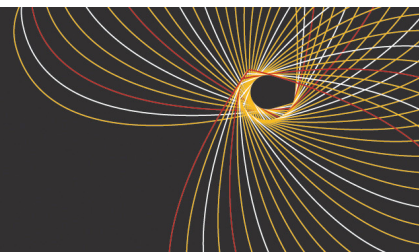
Solihull

**Chelmsley Road Chelmsley Wood Birmingham B37 5GA t: 0121 770 5331 f: 0121 770 0055 e: office@jhncc.org
w: www.johnhenrynewmancatholiccollege.org**

John Henry Newman Catholic College, a charitable company limited by guarantee, registered in England and Wales
Registered office address: Bishop Challoner Catholic College, Institute Road, Kings Heath Birmingham B14 7EG. Company number 07414011



John Henry Newman
Catholic College
Heart speaks to Heart



Leading Parent
Partnership Award

2017-2020



Solihull

Chelmsley Road Chelmsley Wood Birmingham B37 5GA t: 0121 770 5331 f: 0121 770 0055 e: office@jhncc.org
w: www.johnhenrynewmancatholiccollege.org

John Henry Newman Catholic College, a charitable company limited by guarantee, registered in England and Wales
Registered office address: Bishop Challoner Catholic College, Institute Road, Kings Heath Birmingham B14 7EG. Company number 07414011