

a folio education trust school



Wallington
County Grammar School

Teacher of Computer Science

For September 2020
Candidate Information Pack



Contents



Welcome from the Headteacher	3
Our students	4
Background and Ethos of our School	5
Staffing Structure	6
Results and Statistics	8
Our curriculum	9
Our Co-curriculum	Error! Bookmark not defined.
Profile for Vacant Post	11
Contact Information How to Apply	13
Appendix 1 Folio Education Trust	14

www.wcgs-sutton.co.uk

Per Ardua Ad Summa

Through Difficulties to the Heights

Welcome from the Headmaster



I am delighted to welcome you to the recruitment area for Wallington County Grammar School, one of the greatest schools in the country. What makes us great is that, at our core, we care very deeply about our students, both past and present. We are renowned for the quality of our pastoral work, warmly supporting our students to become happy, confident individuals equipped with the qualifications, skills and attributes to succeed in a globalised world.

This was recently recognised by Ofsted in January 2017 who graded the school 'outstanding' in all categories. They stated that, since the last inspection, the Headmaster has 'led a highly committed and skilled team in continuing to drive improvements in teaching and learning. Consequently, pupils at this School are confident and successful learners... Teachers here are leaders of learning. They benefit from highly effective and individualised training which improves pupils' learning. Pupils recognise that teachers go the extra mile to help them achieve their lofty ambitions'. If these words describe you and the type of School, you wish to work in then please apply for this post.

Being a boys' selective school founded in 1927 that welcomes girls into the Sixth Form, we blend the best of tradition with innovation to engage and inspire our students to be the very best they can be. Because of this our students regularly make progress within the top 3% of all secondary schools in the country at GCSE and go on to gain places at the world's top universities. This success is born from our core values of Commitment, Compassion, Courage and Creativity. We believe that we should always show compassion to others, making decisions without self-interest and supporting all those in our community to be happy and successful. We must have courage, never being afraid of failure but embracing it to learn from our mistakes and better ourselves. We are committed, not just to reaching academic success but to enriching ourselves as scholars, sportsmen and women, artists, musicians, actors, debaters and anything else we set our minds to. Finally, we are creative, always being willing to consider different solutions and think deeply about the challenges we face as individuals and as a society.

We tailor our curriculum to ensure students are nurtured as well rounded individuals, excelling in core subjects like Mathematics, English and the Sciences but who are also deeply knowledgeable about the Arts and Humanities. Our co-curriculum further enhances our students' character, forging outstanding sportsmen through our superb coaching programme, and creating individuals who are passionate about representing their club or society, house, year group and school. Above all, we celebrate our incredible students through a culture of praise and recognition to make sure they leave us with the conviction that they can achieve anything they put their minds to.

Mr J Bean
Headmaster

Our students



Our students will surprise you: they are waiting to be challenged and raising the bar only encourages them further to excel.

We are an incredibly diverse school, accepting boys from a wide variety of different boroughs and backgrounds and then welcoming a large number of girls into the school in Sixth Form. Because of this we are truly inclusive, putting tolerance and social mobility at the heart of what we do.

Students are selected by an entrance exam held each September for entry the following year. 150 students are admitted to Y7 and we are increasingly oversubscribed with a large waiting list. Entry into our mixed Sixth Form is decided solely by GCSE performance and the vast majority will go on to the best universities in the country including Oxford and Cambridge.

On entry, all students (and staff) are assigned to one of six Houses, a vertical system which brings everyone together and which is rooted firmly in the traditions of the School. This fosters healthy competition outside the classroom and is cherished by both staff and students who are passionate about getting involved in competitions which include: sport, drama, debating, music, mathematics, literature and commendations.

Our pastoral system is organised horizontally in year groups with a Year Leader ensuring the excellent behaviour and welfare of all students under their care. Student Voice increasingly contributes to the development of School policies and the direction of the School. Visitors comment on the fantastic atmosphere they find in our School, showing excellent relationships among the students and between them and the adults.

Our goal is to attract teachers who can inspire and excite the minds of our students and promote excellence both inside and outside of the classroom.

Background and Ethos of our School



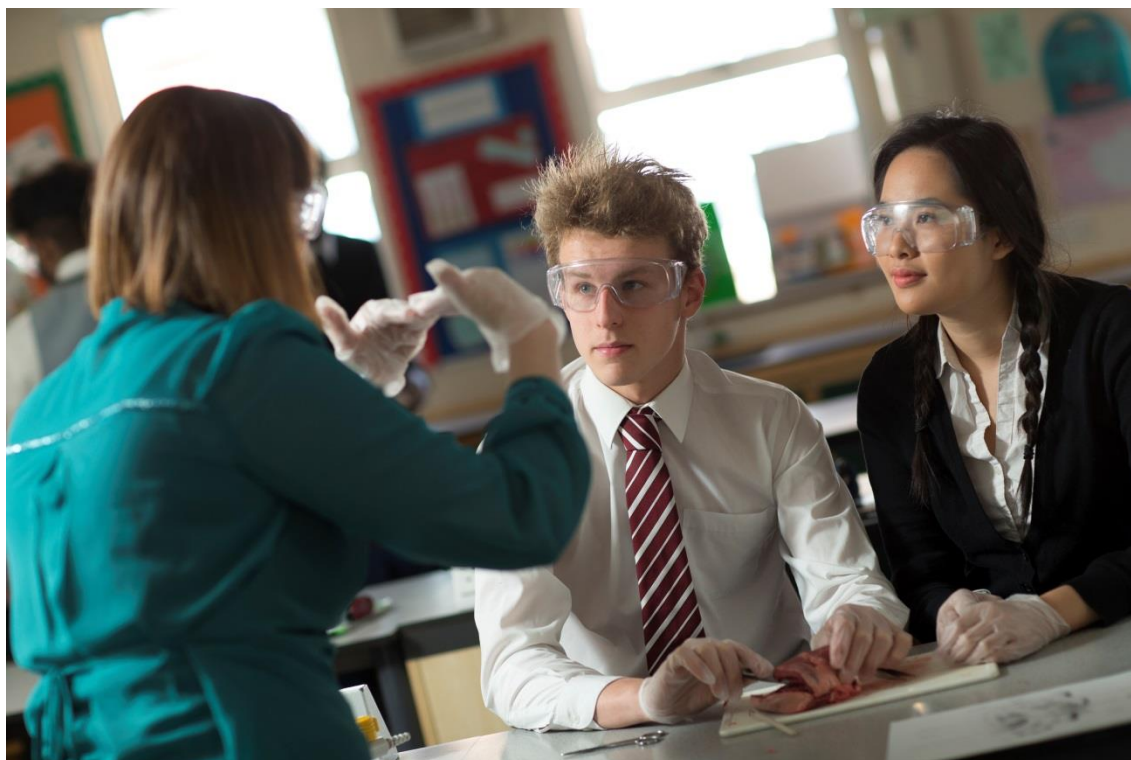
Founded in 1927, our aim is to combine the best of what tradition can offer with a cutting edge approach to achieve successful delivery in the classroom. Being an academy set in nine acres of parkland in the London Borough of Sutton, our site is comprised of a mixture of characterful red brick buildings with modern, state of the art facilities, the latter including our recently completed Physics Laboratories and a new Drama Studio.

We have a thriving co-curriculum which helps create a globally competitive alumni who go on to take leading roles in society. Student run societies, quality form time provision, regular and adventurous school trips and frequent 'Challenge Days' all go towards creating well rounded, ambitious and highly skilled individuals.

The loyalty WCGS inspires in its students is demonstrated by the thriving Old Walcountians' Association, which has its clubhouse at Clockhouse in nearby Woodmansterne. This body supports and contributes to the School in many ways.

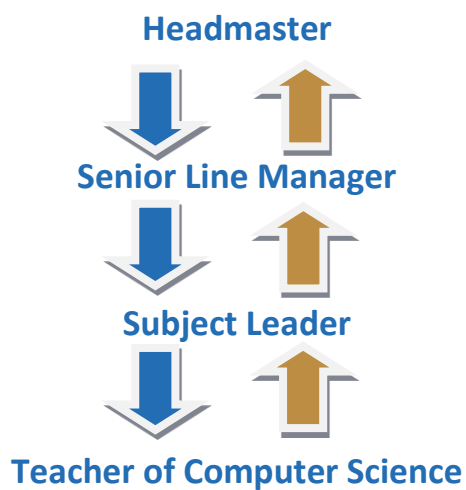
The 'Culture & Ethos' of WCGS permeates all aspects of the School, promotes positivity and is the main technique used to motivate learners. Our core values of **Commitment**, **Compassion**, **Courage** and **Creativity** are the cornerstone of our day-to-day procedures and routines, creating a well-mannered and orderly environment in which everyone will learn. Staff and students never give up in search of excellence.

Staffing Structure



Staffing Structure

The following staffing structure diagram shows the intended line management structure for the Department.



Induction

The School has a caring yet thorough approach to inducting new staff into the School. Line managers oversee this process and sessions are run weekly for all new staff to attend to up skill you in various School specific systems and approaches.



CPD

We have a Silver Status Quality Mark CPD programme which is both responsive to the needs of our staff yet supports our whole school priorities. It focuses on developing co-planning, lesson study and evaluation to allow staff the time and resources they need to develop as trusted Practitioners. We are keen for staff to work with colleagues in our wider networks which include the Sutton Alliance, the Boys Academic State Schools group, the Grammar School Heads Association and PiXL and actively facilitate this process.

We have a proactive approach to developing staff in-house, seconding teachers onto the Academic and Pastoral Boards each year, as well as onto the Senior Leadership Team. This has led to the creation of a highly motivated and ambitious body of staff who often secure promotions within the school or outside of it.

Facilities

In addition to the dedicated Staff Room, the aim is for all staff to have their own quiet, personal work space (not classroom based) equipped with desk, PC and other facilities appropriate to their subject. Classrooms are currently being refitted with state of the art display monitors and we are keen to accept bids to from Subject Areas to develop classrooms for personal needs.

Pay

We pay staff on the Outer London Pay Spine and have a performance related pay policy which aims to reward commitment to, and excellence in, our practice. We also have a Lead Practitioner Scale for teachers to apply for when positions become available should they wish to make a career out of demonstrating and developing excellence in the classroom.

Results and Statistics



A full breakdown of our raw results can be found in the tables below.

GCSE

	2019 percentages				2018 percentages			
	Entries	9	8	7/A+	Entries	A*	A*/A	A*-B
Overall	1633	22	49	71	1761	18	39	64
Computer Science	57	16	40	67	18	17	44	78

A2

	2019 percentages				2018 percentages			
	Entries	A*	A*/A	A*-B	Entries	A*	A*/A	A*-B
Overall	539	15	45	77	549	16	53	79
Computer Science	11	9	27	64	17	12	41	53

We are, however, very conscious of our selective intake and the impact that this has on our raw attainment data. For this reason, we prefer to measure our performance on progress so that we can directly compare the impact we are having on our students' learning with all other schools nationally. When using Progress8 as a measure, the following statistics demonstrate just how successful we are as a school:

GCSE 2018 (estimated)

We were in the top 4% of all schools nationally for the amount of progress our students made overall.

Top 1% for progress in Mathematics

Top 1% for progress in the Sciences

Top 5% for progress in the Humanities

Top 5% for progress in English Literature

We also pride ourselves on how well our students on the Pupil Premium and with special educational needs perform being consistently well within the top 10% of all students in the country for progress.

Our curriculum



Wallington County Grammar School is a highly academic but pastorally minded school which delivers a curriculum that enables all students to embody our motto - *Per Ardua ad Summa*, Through Difficulties to the Heights. The intentions behind our curriculum are to provide:

Breadth - We intend to provide a broad, academic and liberal curriculum that equips students with the body of human knowledge and different ways of thinking necessary to succeed in and enjoy their education, careers and wider lives. This is why:

- we commit highly qualified subject specialists to deliver 18 different subjects in Key Stage 3, with suitable time allocations to ensure they are taught and explored meaningfully. Over two years this includes: 128 hours of history and classics; 110 hours of geography; 73 hours each of drama, art, music and computer science; 147 hours of design and technology including food and nutrition; and 18 hours of government and politics. All other subjects are continued into Year 9;
- almost all of our students will do at least 11 GCSEs including mathematics, English language and literature, biology, chemistry, physics, religious studies, three options and a language;
- we structure our GCSE options blocks around one 'humanities' subject (history, geography, economics or classics), one 'creative' subject (art, music, drama, design and technology or computer science) and one free option;
- KS4 students will do lessons in wellbeing, physical education, games and an annual drop down day in government and politics;
- Clubs and Societies time is timetabled into the school day for all students to provide enrichment outside of the core curriculum;
- all Sixth Form Students participate in an enrichment programme on Wednesday afternoons;
- we have such a strong focus on the co-curriculum which includes the delivery of the Extended Project Qualification, Duke of Edinburgh (bronze, silver and gold), an exceptionally strong house system, school productions, fundraising weeks etc.

Depth - we do not want our students to simply study the national curriculum and examination specifications with grades being our sole focus. We aim for our students to become true scholars of the disciplines that they are learning so that they achieve a deep and sophisticated level of knowledge and understanding. This is why:

- all lessons in all key stages include Deep Thinking Challenges to push students out of their comfort zone and engage them in the value of scholarship;
- subjects at KS3 are not taught on carousels but delivered by subject specialists as separate, academic disciplines;
- we provide students with a three year Key Stage 4 so that they can go beyond the already challenging GCSE specifications to truly explore the subjects that they love through enrichment topics and tasks;
- we encourage acceleration in subjects such as mathematics so that most of our students will sit GCSEs in further mathematics and/or additional mathematics;
- we offer only highly academic A Levels;
- we encourage a large number of departmental educational visits;
- we provide a wide range of academic clubs and competitions including Crest Award, Physics Olympiads, Maths Challenges, Debating Tournaments, Oxbridge Essay Competitions etc.

Values - we aim for our students to develop our four core values: commitment, courage, compassion and creativity. This is why we:

- structure our entire praise policy around these qualities;
- report on them regularly to parents;

- use them as the basis for our assembly schedule and our pastoral curriculum delivered through form times alongside our five pastoral pillars educating students in drug/alcohol awareness, sex and relationships, eSafety, mental health and careers;
- provide Challenge and SMSC (social, moral, spiritual and cultural) Drop Down Days in all year groups throughout the year;
- have such a strong focus on the co-curriculum as described above.



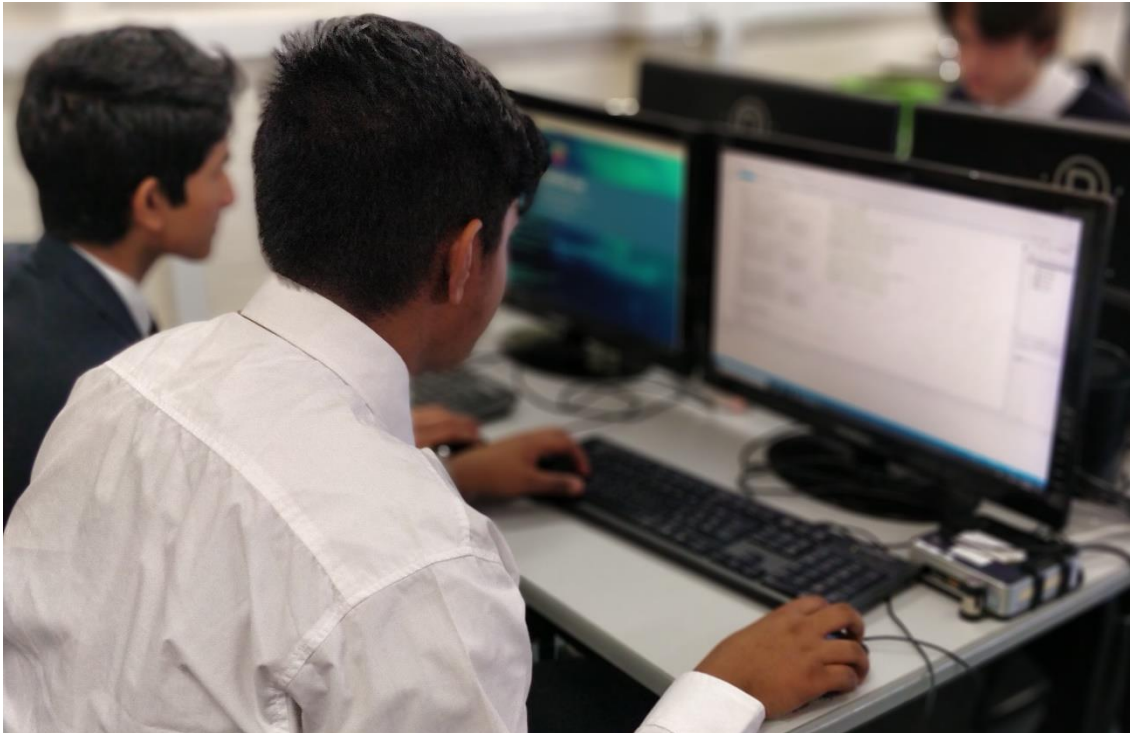
Democracy - we aim for all our students to have the necessary knowledge and confidence, not just to participate in the democracy of the United Kingdom, but to lead within it. This is why we :

- deliver a dedicated drop down day focussing on the fundamentals of our political system in years 7, 9, 10 and 12;
- provide a full government and politics curriculum in Y8 and in wellbeing;
- offer government and politics at A Level;
- run a full range of politics related activities and trips during activities week;
- have such an active school council;
- promote such strong politics and debating societies.

Building a Family of Schools

The School works as part of Folio Education Trust which also includes Coombe Wood School, a new secondary Free School in South Croydon which opened in September 2018, Park Hill Junior School and St Peter's Primary School. The opportunities of working within a Federation of schools is very rewarding and includes shared, cross phase CPD, as well as opportunities for career sabbaticals and promotion.

Profile for Vacant Post



Please consult the job description sent out with this brochure for a full break down of the skills, qualities and duties that need to be fulfilled to achieve excellence in this post. It is recommended that you use these as a basis for your application and interview preparation. In addition to these, desirable qualities for this specific position include:

The initial areas for the successful candidate to focus on will be:

- Teaching outstanding lessons which stimulate, engage and stretch very able students
- Sharing good practice within the Subject Area and beyond
- Implementing the school's Vision for Learning; engaging learners, deepening their thinking, providing suitable challenge to ensure progress for all, and building good relationships within the school.

Candidates should have a proved record of:

- Excellent subject knowledge and an appreciation of outstanding practice in this area
- Enthusiasm for employing innovative and successful learning methodologies
- Reflecting on existing practice, and being open to further development

The successful candidate will need to demonstrate:

- A passion for their subject and the ability to communicate this to a wide audience
- A willingness to take risks and move beyond their comfort zone in teaching
- The communication and organisational skills required for effective team working

Subject Area Information

Computer Science is a new and thriving subject at Wallington County Grammar School. It is a very popular GCSE option subject that was oversubscribed on the GCSE option choices this year.

We have a skills based focus KS3 in Computer Science, covering the basic understanding of several programming languages including Scratch, HTML, Java Script and Python. Students in Year 8 are also taught the fundamentals of cyber security and its consequences.



GCSE Computer Science offers a fantastic introduction all areas of computer development including real-world programming skills, an understanding of the fundamental principles of computing including abstraction, decomposition, logic, algorithms, and data representation.

Students learn how to analyse problems in computational terms through practical experience of solving problems, including designing, writing and debugging programs. As well as think creatively, analytically, logically and critically.

The qualification also gives a great introduction to understanding of the impacts of digital technology to the individual and to wider society and analysing its consequences.

Students perform extremely well at GCSE, achieving 40% 8s and 9s in Computer Science last year, with value added in the 1st percentile.

At A-Level students are stretched beyond the limits of the specification. A wide range of resources are provided to support students and they are encouraged to apply their classroom knowledge to solving real world problems in terms of programmed solutions.

Students are examined in two papers, the first being a practical programming paper, currently written in VB.Net. This is followed by a written exam, assessing the students understanding theoretical side of the course as well as high level mathematical concepts.

Successful teaching at this level requires excellent subject knowledge a practical application and outstanding teaching techniques targeted at engaging students' interest and developing reflective, resilient and creative learners.

The department also offers students the opportunity to participate in a range of co-curricular opportunities such key stage 3 robotics club, with regular competitions. We also run a student led Computer Science Society which attracts students from a range of years, including those who do not study the subject.

As a department we have worked hard and successfully over the past few years to increase the students' independent learning skills, fostering their desire to achieve well and to produce work of the highest quality, while managing our own workload. We are continually working to improve our own teaching and developing a range of activities, particularly involving investigation and exploration, always with an eye to improving the educational experience for our students, their interest in the subject and their results. Outstanding lessons are expected and teachers rise to the challenge. Problem solving is emphasised for all our students, is an essential part of the new GCSE, and A-Level.

All teachers in the department are encouraged to develop their careers, whether this be through learning and teaching new areas of Computer Science, such as learning new programming languages, improving their teaching skills, or taking on new areas of responsibility, either in the department or in the wider school. In addition to in-house CPD sessions we have sent teachers on a number of the excellent CPD sessions and courses run by external companies.

Our overall aim is for students to love Computer Science and to want to do more. It is a wonderful feeling to hear a conversation between students leaving school at the end of a day discussing how they overcame a programming problem earlier that day.

Contact Information

How to Apply



Designated departmental contact for this vacancy:

Name: Mr Jack Barwick (Subject Leader for Computer Science)

Number: 020 8647 2235

Email: jbarwick3.319@wcgs.foliotrust.uk

Please visit <https://www.wcgs-sutton.co.uk/career-opportunities> to download the candidate pack including the Job Description and Application Form. Please note we can only accept applications on this form. The completed form should be emailed to Mrs Jo Johnson, HR Officer at personnel@wcgs.foliotrust.uk.

We welcome visits to the School prior to application. Please contact Mrs Johnson to make an appointment.

Please also note that to comply with Safer Recruitment guidelines CVs cannot be accepted as a valid form of application.

If you have any queries about the role, please contact Mrs Johnson using the email address above.

Closing Date: 9am, Thursday 16th January 2020

We reserve the right to interview and appoint a suitable candidate prior to the closing date. We therefore recommend that applications are submitted as soon as possible.

Wallington County Grammar School is part of the Folio Education Trust and is committed to safeguarding and promoting the welfare of children and young people and expects all staff and volunteers to share this commitment. The recruitment process will include an enhanced DBS check, medical screening, confirmation of right to work in the UK and all other pre-employment checks in line with safer recruitment requirements.

The Candidate Privacy Notice is published on our web site at <https://www.wcgs-sutton.co.uk/career-opportunities>.

Equal Opportunities

At Wallington County Grammar School, we believe that all individuals are of equal value and we are committed to equal opportunities for all. All people who work and study in the school have the right to be respected and valued within a safe and secure environment and not to be discriminated against on the grounds of age, class, sex, race, disability, sexual orientation and religion or belief.



Appendix 1

Folio Education Trust

We believe that we are outstanding: not because we say it, but because we work hard at it. We are dedicated, committed and focused. We believe that every person will reach their personal best and overcome any challenge through a shared culture and ethos. We are dedicated to developing as successful individuals, creating a positive environment where all of us will learn. We never fail because we never give up. We believe in ourselves. We believe in each other.

Core values – The system which helps guide our existence

Our 'values system' is shared by all academies within the Trust and is the cornerstone of our existence. It ensures that everything we do is with the young people in mind and promotes a culture and ethos which allows all to BELIEVE.

Our Future – what do we want to see in 10 years?

Our Academy Trust will support academies that are the first choice of local families because of the 'gold standard' education that is provided. All academies within the Trust are student centred and this drives our decision making. Smiling faces are common place for students and staff as they are happy being part of the academy and part of a wider Trust community. Being educated as part of this Trust will mean something to not only the individual but also those who provide the next step of a young person's education, training or employment.

The service provision which helps drive the individual organisations within the Trust is focused on quality – listening, understanding and adjusting to meet the needs of those it is designed to serve. A main objective is to provide a system of self-challenge, self-improvement and collaboration with a shared passion to raise standards and allow all students to reach their personal best. No student or member of staff is neglected but inspired to develop improved life chances and live long and happy lives. As part of the collaboration between academies there is a desire to research pedagogy and the importance of Health and Well-Being to influence social change to remove the barriers which affect mental health and access to the opportunities for discovering and reaching personal best. Every person deserves the best and the Trust will do what it takes to deliver this while ensuring efficiencies and economies of scale which deliver outcomes beyond outstanding on a global scale.

Long term goal on a national scale

Contribute towards the changing face of British Education and be one of the top five performing Multi –Academy Trusts in the country, designing and sharing academy improvement strategies.

