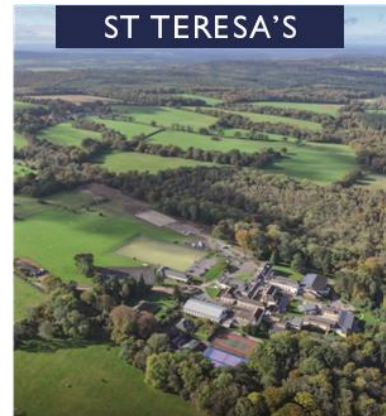
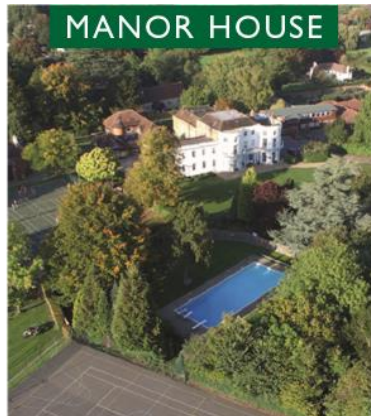
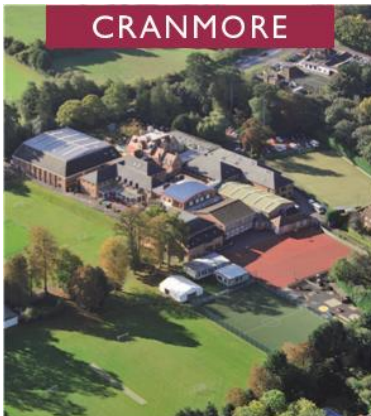


EFFINGHAM

CRANMORE • MANOR HOUSE • ST TERESA'S

Appointment of Effingham Schools Trust Director of Sixth Form September 2024

Information for Applicants



The Vision

In 2019, neighbouring and complementary schools St Teresa's and Cranmore came together to form Effingham Schools Trust (EST), based on a diamond model – a powerful and exciting educational proposition, delivering all the advantages of both single sex and co-education to girls and boys. The partnership has proven incredibly successful, providing new opportunities for pupils of all ages, and bringing strength and stability to both schools.

EST is delighted to be able to build on this success with the announcement that Manor House School joined the Trust from September 2023, forming a dynamic educational triumvirate. Three modern, progressive schools, Cranmore, Manor House and St Teresa's each have enviable track records, delivering best practice teaching to their pupils, whilst maintaining exceptional pastoral care.

With 1500 pupils across the three sites, the new partnership will allow each school to focus on its strengths whilst retaining its individuality, presenting to all students an extraordinarily rich variety of shared events, facilities and resources to provide a distinctive and distinguished education for pupils of all faiths and backgrounds.

EST's diamond model will offer the benefits of the co-ed classroom to very young pupils, the benefits of the single sex classroom in later prep and secondary years, before finally returning to co-education at Sixth Form. This method reflects and acknowledges that girls and boys approach their learning in differing ways at different developmental stages.

In 2025, the top of the diamond will come to fruition, with the introduction of a co-educational Sixth Form, based on the site at St Teresa's. We seek a dynamic and enthusiastic individual who will lead on creating the co-educational aspect of the Sixth Form, recruit and retain pupils, and steer this part of the Trust into its next exciting phase. This role is a senior leadership position.

Director of Sixth Form – The Effingham Schools Trust Sixth Form

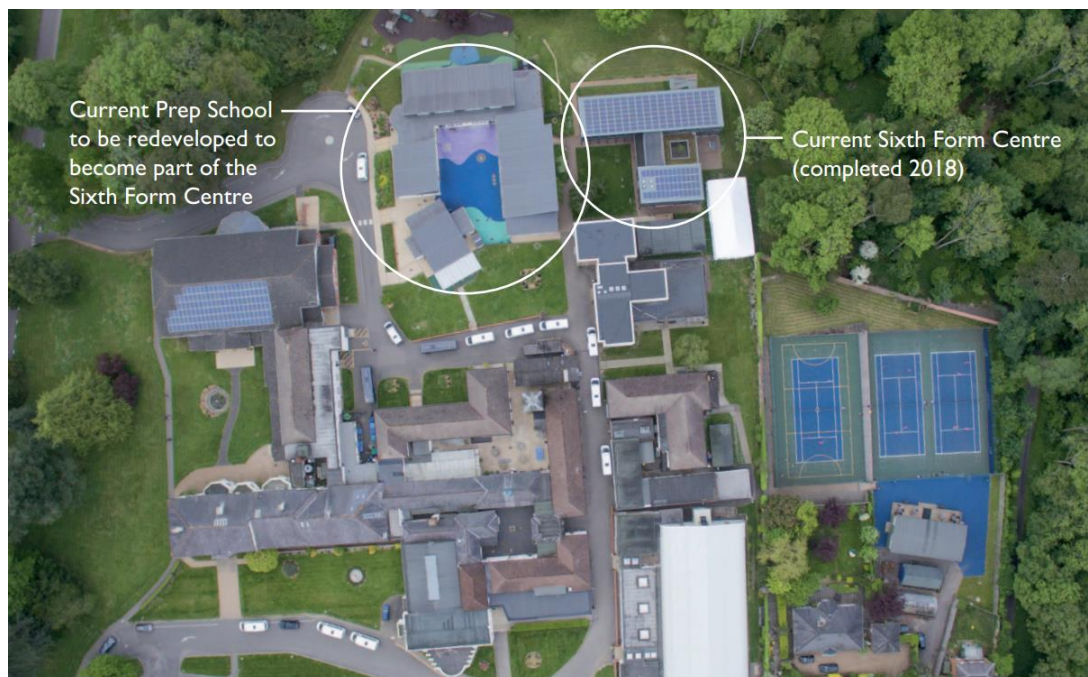
The Director of Sixth Form role is a rare opportunity to establish for September 2025 a co-educational Sixth Form on the St Teresa's Effingham site, with St Teresa's Senior School joining together in partnership with Cranmore School and Manor House School. This role would be suitable for candidates already in senior leadership or considering an upwards move. It could be a stepping-stone towards Headship. Although the role will be based at St Teresa's, it is envisaged that the Director of Sixth Form will spend a significant amount of time at Cranmore, ensuring the retention of boys. There will also be a requirement to liaise closely with Manor House.

Eventually, the Sixth Form is envisaged to number over 300. It will be located on the St Teresa's site, encompassing not only the Sixth Form Centre (opened in 2018) but also the current Prep site, creating a stand-alone and much enlarged Sixth Form Campus.



The Sixth Form

St Teresa's Sixth Form is going from strength to strength and has been the beneficiary of substantial investment in the past 5 years. A stunning Sixth Form Centre with lecture theatre and study rooms provides students with a relaxed yet purposeful environment within which they thrive. The relocation of the girls' Prep to Manor House will allow St Teresa's to remodel the vacated rooms to accommodate our growing Sixth Form, and to rise to the challenges that co-education will inevitably pose.



- The Director of Sixth Form is a Senior Leadership role and will report directly to the Executive Director of the Effingham Schools Trust (EST) for all strategic and financial aspects of the developing Sixth Form.
- The Director of Sixth Form will have a close, collaborative working relationship on all operational and academic and pastoral aspects with the Head of St Teresa's.
- The Director of Sixth Form will also collaborate with the Heads of Cranmore School and Manor House School and liaise where appropriate with their respective Senior School staff.
- The Director of Sixth Form will be a member of the EST Executive Committee, chaired by the Executive Director of the Trust, as and when matters relating to the Sixth Form arise.
- The Director of Sixth Form will establish a Sixth Form Operations Committee, including the Senior and Deputy Heads of St Teresa's (Academic and Pastoral), and Deputy Heads of Cranmore and Manor House. EST leads in Sport and Chaplaincy will also form part of this group when required.

The Sites

The three schools are conveniently located just a few miles apart, each with its own stunning site in the heart of Surrey. EST's excellent transport services will be further developed to fully accommodate the needs of parents and pupils at all schools.

The EST has a very healthy population of 1500 pupils across all three sites. St Teresa's has a school population of 640 including over 80 boarders, and a thriving Sixth Form. The school sits in 55 acres of beautiful countryside and the benefits from excellent facilities. In recent years the school has carried out a significant development programme and further exciting projects are in the pipeline.

St Teresa's offers a strong, caring community based on its Catholic traditions, but remains an inclusive environment that welcomes pupils from all backgrounds. With recognised strengths spanning academia, sport and the creative and performing arts, we focus on the individual, allowing the girls to achieve their best and enabling them to follow their own unique path to happiness and success.



Cranmore has undergone an exciting new phase of development to become an outstanding Prep and Senior school. With a bold, vibrant culture and an enviable sporting and academic reputation, Cranmore offers education up to Year 11. The boys will then continue their academic journey with a guaranteed place in the new co-ed Sixth Form based at St Teresa's from 2025.



Manor House is a delightful school in an enviable 17-acre site in a beautiful setting, which proudly celebrated its centenary in 2020. With almost 300 pupils, the school comprises a Toddler Group for the very youngest children (from age 1), followed by Nursery (age 2–3), Kindergarten (age 3–4) and Lower Prep (Reception to Y2), all co-ed. It is single sex girls in Upper Prep School from Y3 to Y6, and Senior School in Years 7 to 11.



Location

St Teresa's is situated between Dorking and Effingham in Surrey, Cranmore is situated in East Horsley, and Manor House is located in Bookham. There is easy access to London by road or rail; both Gatwick and Heathrow are within 45 minutes' drive.



Facilities

St Teresa's is centred around the original eighteenth century manor house, which has evolved over the years and now proudly boasts some outstanding facilities.

A number of new facilities have been provided to meet the needs of a modern education. These include a brand new Sixth Form Centre, Equestrian Centre, Tennis Academy, a Performing Arts Centre comprising a large theatre, drama studios, music classrooms, practice rooms and recording suite. In addition, pupils at St Teresa's enjoy a swimming pool and an all-weather pitch.

Remuneration and Benefits

Our staff enjoy working as part of a strong school community.

We reward our talented staff with a range of benefits.

Salary

Salaries are competitive and in line with independent school teaching scales.

Continued Professional Development

All staff have access to professional development training as part of the school's performance development and appraisal process. Individuals are encouraged to continue to develop their skills to provide high quality teaching and learning for our pupils.

Fee Remission

Discounts available on school fees. Full terms and conditions provided by the Director of Finance.

Pension Scheme

Generous contributory pension scheme.

Refreshments and lunch

Refreshments and lunch provided during term time.

Cycle to work

Cycle to work scheme for staff members.

Parking

Parking for staff members is provided on site.

Counselling Service

A free, confidential 24-hour telephone service available 365 days per year.

Use of School sports facilities

Staff may use the school's 25-metre indoor pool when available.

Application and Recruitment Process

The Appointment

All applicants are required to complete an **application form** containing questions about their academic and employment history and their suitability for the role. **A Letter of Application addressed to Dr Claire McShane (Headmistress) should accompany the application form.**

The letter should indicate your suitability for the post and your motivation for submitting the application. Further information including examination results and the Independent Schools' Inspection Report can be found on the School's website www.st-teresas.com

As part of the Effingham Schools Trust's commitment to safeguarding and promoting the welfare of children, any offer of employment to this post will be subject to receipt of a satisfactory Disclosure and Barring Service check, along with qualifications, two satisfactory references and a satisfactory response to a Health Questionnaire. **Please note that references will be taken up on short listed candidates prior to interview.**

Closing Date for Applications:	Monday 29th January 2024
Applications should be sent to:	Mrs Karen Babler (Recruitment Manager) k.babler@st-teresas.com St Teresa's School Effingham Surrey RH5 6ST
First round interviews will take place on:	Monday 5th February 2024
Second round interviews will take place on:	Monday 4th & Tuesday 5th March 2024

The Effingham Schools Trust reserves the right to interview at any stage of the selection process.

FOR FURTHER INFORMATION:

CRANMORE

www.cranmore.org



www.manorhouseschool.org

ST TERESA'S

www.st-teresas.com