

Appendices

As we are currently developing our website, the following appendices are being made available to support your application, providing you with further insight into the philosophy and strategic thinking of the RLS Task Force and the Board.

A JOURNEY OF REBIRTH

In taking the first steps of the journey towards the schools' rebirth, we recognize that we are not merely *Architects of Building*, but rather *Architects of Learning* and builders of great futures.



RENEWED PURPOSE

At the core of the Rashid & Latifa promise is the cognitive, physical and spiritual development of Dubai's, and the UAE's, future generations of leaders.

When our campuses reopen in 2023, every aspect of our offering will be geared towards fulfilling the school promise. This includes our renewed **vision and mission** statements, the **educational model** with innovation at its core, the school and leadership **structures**, the bespoke and fit-for-purpose **curriculum** offering, with its various enrichment components, and a sound **governance** system to set direction and to guide the new organism. Bolstering it all will be a **culture** shift, where relentless drive and ambition, high achievement and untethered accountability take centre stage.

The refurbishment of the schools' facilities will ensure that the physical learning environment supports the schools' renewed purpose.

The sum total of the five pillars of our *Architecture of Learning* are designed to:

- support the development of independent and resilient young people who possess the learning dispositions required for success in their lives within and beyond the school;
- nurture curiosity, imagination and creativity to inspire and equip our students to become leaders and innovators, and to be positive influencers in our world;
- endow our students with the spiritual and moral values that are at the root of Emirati culture, including valuing and embracing everyone; and
- develop a culture within the school based on open communication, mutual understanding and trust

VISION • MISSION • CULTURE

OLD ROOTS,... NEW ROUTES



VISION

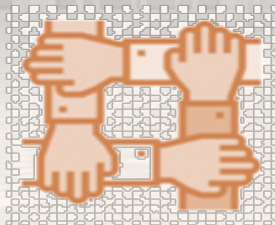
Inspiring future leaders



MISSION

Rashid and Latifa schools provide a bespoke, world-class education, within a UAE cultural context that:

- Develops future leaders who will have a positive impact on their world
- Nurtures bilingual, responsible, empathetic global citizens
- Values students as individuals and helps them identify their unique contribution and purpose



CULTURE

When all stakeholders are deeply engaged and embrace our school's culture, it will reverberate throughout our community. Our culture is the sum-total of our shared beliefs, attitudes and values. It forms the basis for all relationships within our school community, and deeply influences the outcomes we aim to achieve.

In developing and maintaining the Rashid & Latifa culture the following statements apply:

- Rashid & Latifa schools embrace the strong traditions, cultural heritage and Islamic values of the UAE, as well as their close relationships with parents and the wider community; relationships that are based on open communication, mutual understanding and trust.
- Our dominant culture is one of success, on both the academic and personal development fronts, underpinned by accountability at all levels.
- Ours is a community of ardent learners, where all seek to learn and to collaborate in an atmosphere of innovation, collaboration and persistence.
- Our ethos is one of constant self-reflection and improvement, with an unquenchable thirst for the success of the individual as well as the collective, and a genuine passion for the school, its purpose and mission.

VALUES & LEARNER ATTRIBUTES

We are committed to preparing each young person as a future leader, within an environment that simultaneously sets high standards of achievement while offering support, kindness and opportunity.

Our students will demonstrate high ethical and academic standards. They will possess confidence in their own abilities to lead with wisdom and empathy, to think critically and to articulate cogently in both Arabic and English. And though they will be profoundly rooted in their own cultural and moral edifice, they will be fully and positively engaged with the dynamic world around them, as they assume their rightful place as principled and caring global citizens.

Underpinning our values is a deep and lasting commitment to celebrating the progress, effort and achievement of our students and to preparing each young person for a successful future. The attributes that characterize our learners are shaped by our core values.



Core Values

Creativity

We believe that creativity in our curriculum helps our students to be innovative and encourages pioneer learning. Our creative learning spaces transform the ways that our students apply their learning. Creative expression is key to their emotional and social development.

Collaboration

Collaboration is at the heart of our learning strategies. Effective collaborative learning will be achieved through structured approaches, with well-designed tasks that are devised to reach the most effective learning gains.

Well-being

We believe that positive attitudes to learning are instilled by high quality interactions and interventions within a school culture of honesty, trust and caring relationships. We teach our students how to manage their emotions and to take risks within the safety of their school environment. Our students have the confidence and the tool kit to approach the unfamiliar. They are aware of the merits of healthy living, fitness and their own well-being.

Kindness

We nurture an ethos of kindness and compassion for others. Our students will embrace gratitude, compassion and learn to be empathetic. They are tolerant of the views of others.

Learner Attributes

Resilience

Our students have the ability to recover quickly from difficulties, to learn from their mistakes, to recognize the need for different approaches to solving problems and not to give up easily when facing complex challenges.

Integrity

Our students develop their own values, beliefs and moral standing. They learn how integrity and honesty, courage and respect are core strengths which enrich their lives.

Global engagement

We believe that global awareness and international collaboration during their formative years will encourage our students to see the world from different perspectives, helping them to make informed decisions and to acquire transferable, life-long skills.

Positive mindset

Our students will be prepared for a fast moving, ever changing world. We seek to instill a deep desire to learn and for each student to challenge themselves and push their own boundaries. We will promote self-confidence and reinforce their positive view of themselves. We will teach them to embrace fresh challenges, be intrigued by mistakes, enjoy effort and continue to learn.

Courage

Our students build confidence and resilience. They are encouraged to "keep trying." They learn to overcome their fears, face the unknown, do the right thing, make the right decisions, set a good example and take control of feelings of anger and resentment.

Wisdom

Our students learn the ability to be discerning and insightful, make reasoned judgements and know what is right as their learning grows.

Curiosity

Our students have the deep desire to learn. They are motivated and excited to explore, discover and work things out. We believe that curiosity is innate in every child and that an education with us will instill their desire to learn and know.

Compassion

Our students care about others and treat them with kindness. They demonstrate empathy and have a desire to help those in need.

EDUCATIONAL MODEL



State-of-the art 'Digital Platform' and 'Artificial Intelligence' will support, 'anywhere, anytime learning'

The educational model is rooted in the school's strong traditions, which are inseparably interwoven with the language, cultural heritage and the Islamic values of the UAE. After all, if our graduates are to become the next ministers, undersecretaries and director generals in the public sector, or the country's next captains of industry, they must, first and foremost, appreciate the unique position that the UAE holds in the world, and carry with them the enduring values of the country, its rulers and its people.

Our starting point is to cultivate the academic, physical, social/emotional and spiritual well-being of our students. This leads to the inculcation of the attributes we wish our students to possess: *resilience, integrity, global engagement, positive mindset, courage, wisdom, curiosity and compassion*. And out of these attributes emerge the values that we believe will be the foundations upon which the future success of our students can be built, the values that the school stands for: *creativity, collaboration, well-being, and kindness*.

The machinery that will ensure effective implementation of the educational model is built on close ties and trust with parents and the local/global communities. Only when we are able to unite under a single vision and share a commitment to preparing each young person for a successful future can we hope to achieve our goal. These include: *informed innovation coupled with reflective practice, social learning, knowledge of connection to students, and deep subject expertise*.

Keys to the Educational Model

Informed innovation / Reflective practice

Our students' innovative framework is strengthened by our creative approaches to the curriculum. We actively encourage alternative pathways to learning and make connections between multiple things. Our teachers make the learning enjoyable, giving the students the confidence to take chances and think creatively outside the box.

Social learning

Our students are encouraged to learn through the observation of the behaviours of others. The social contexts within our school allow individuals to acquire new behaviours by making their observations within a safe and stimulating school environment.

Knowledge of connection to students

Our teachers have expertise and knowledge about the technologies and curriculum resources that help our students to connect with up to the minute and accurate sources of information that allow them to explore ideas, acquire and synthesize information and solve problems.

Deep subject expertise

Our teachers are highly professional experts in their field. They are insightful and know their subjects and areas of expertise. They use fitting and appropriate pedagogies to teach their subject and have the expert awareness of how their subject and how it features in the curriculum as well its relationship and connectivity with other subjects.



"نراهن على التعليم في سباق الأمم، والاستثمار في تنمية
الإنسان هو الاستثمار الوحيد الذي لا يعرف الخسارة،
وهدفنا أن نكون الأفضل في التعليم عالمياً"

محمد بن راشد آل مكتوم