



Candidate Information Pack

'The most exciting school in the country'

Sir Anthony Seldon

'Bilingual, biliteral, bicultural – and unique.'

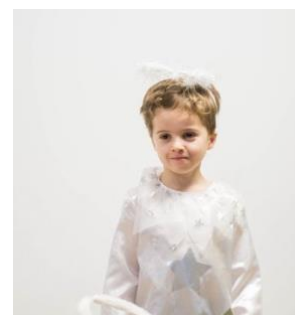
This school is a beacon for the future'

Good Schools Guide



CONTENTS:

- Introduction to Kensington Wade
- Background to the School
- Aims & Values
- The Bilingual Immersive Model
- The Curriculum
- The Pupils
- Leadership Team
- School Structure and Growth
- Facilities
- Salary & Staff Benefit



Introduction to Kensington Wade

Kensington Wade is a first-class British prep school with a unique difference: it is the first prep school in the UK to offer an immersive bilingual English/Chinese model and, since opening in 2017, has been recognised internationally, nationally and locally as an outstanding and pioneering educational institution. In 2022, the school won the Independent Schools Association's Award for Innovation in Education.

Background to the School

The idea of a dual language English/Chinese school was first introduced in the USA over 35 years ago. The popularity and reputation of these schools have grown and there are now over 350 such schools in the USA. Kensington Wade was founded to introduce to the UK the opportunity for young people to acquire linguistic and cultural fluency in Chinese and English as part of a top-level British education.

The operating company which owns Kensington Wade is Anglo-Chinese School of London Limited. Its Chairman is Professor Hugo de Burgh, an academic, author and expert in Anglo-Chinese affairs.

Kensington Wade has an advisory board of governors, made up of professionals from diverse backgrounds including several senior educationalists. The Chair of the advisory board of governors is Rodney Harris, previous Deputy Head of Westminster School.



Aims and Values

Kensington Wade aims to give children the skills and attributes that they need to be able to live and work in a world where China will play an increasingly important role. The school provides a safe and nurturing environment where children develop a love of learning; habits of independent thought and a spirit of curiosity; bilingual and bicultural skills; personal responsibility; moral integrity; mutual respect and tolerance. In addition to providing an excellent academic start in life, Kensington Wade gives the children three extra advantages:

- Fluency in Mandarin Chinese
- A bilingual mindset
- The ability to transfer comfortably between cultures

The Bilingual Immersive Model

In order to achieve bilingualism and biculturalism, Kensington Wade operates an immersive model whereby children spend approximately half of their day being taught in English and the other half being taught in Chinese by native Mandarin-speaking teachers.

The Curriculum

The unique and exciting curriculum has been designed to prepare children for entry to leading senior schools in the UK, particularly London day schools, with high expectations of attainment. Pupils learn mathematics, English, Chinese, science, geography, history, religious education, computing, art and design, music, physical education and PSHE. Each subject is delivered in both languages with successive lessons building upon the previous one (whether delivered in Chinese or English) to ensure that the children's knowledge and understanding progresses.

Children are encouraged to think critically and imaginatively and, above all, love learning. Mathematics is based on the Shanghai Mathematics approach. Creativity, critical thinking and high-quality, first-hand learning experiences are considered extremely important parts of Kensington Wade's curriculum.



The Pupils

Kensington Wade serves London's growing population of professionals who want their children to be bilingually and biculturally fluent as part of a rich education for a global future. The background of the pupils reflects the international outlook and forward-thinking character of the families who make up the Kensington Wade community. Children may speak one or more languages in their family environment, but the majority of pupils do not speak Chinese at home.

Leadership Team

The school's Headmaster is Mr. Huw May, who joined the school in September 2023 from Eaton House Belgravia. Mr. May is a leading expert in preparatory education in the UK and has led a number of high-profile schools. He is an ISI inspector.

The Board of the owning company of Kensington Wade is Anglo Chinese School of London Limited, Chairman Professor Hugo de Burgh. Professor de Burgh is an expert and prolific author on Anglo-Chinese affairs and leads the China UK Creative Industries Centre at Goldsmiths University. His career has spanned academia, policy and media. Mr. Rodney Harris is Chair of the school's Advisory Board of Governors. Mr. Harris was formerly Deputy Head of Westminster School and Headmaster of Westminster Chengdu.

Kensington Wade has two Deputy Heads, focusing on the English and Chinese aspects of the curriculum respectively. The School Senior Leadership Team comprises the Head, the two Deputy Heads and the Heads of Administration and Admissions. The Leadership Team works closely with the Board which manages the owning company.

School Structure and Growth

The school opened in September 2017 with one class of 15 Early Years pupils. A new cohort has been added each year; the school now has a full structure of classes from Nursery to Year 6. The school is progressing towards two-form entry. The school expects significant growth in pupil numbers in 2024-5 and continues to expand its avenues of pupil recruitment in the local London market and internationally.

Facilities

Kensington Wade is located on Fulham Palace Road and enjoys over 13,000 sq ft of teaching space incorporating classrooms, a large hall, a dining room, a science & technology room, a music room, large playgrounds, a separate nursery building with outdoor area, offices and staff room. The school shares a large building with Melcombe Primary School.

Salary and Staff Benefits

Kensington Wade recognises that its greatest resource is its staff and works hard to make sure that every member of staff feels valued. We offer a competitive salary, a private pension scheme, healthcare benefits, death in service policy, free school lunches and excellent opportunities for staff development. Kensington Wade is a member of the Independent Schools Association and the Independent Association of Prep Schools.