



WELCOME TO
FORMBY HIGH SCHOOL



Formby High School is a unique, warm and caring mainstream 11-18 school which sits at the heart of the local community. Over the last 10 years, it has built a strong reputation for the quality of education, personal development and pastoral support it provides. This is reflected in the fact the school is heavily over-subscribed each year and has created an environment where teaching and support staff want to work, with very low staff turnover. The school is inclusive and accepts students with a broad range of abilities and needs, and prides itself on delivering diverse pathways which enable all students to achieve their full potential. The Governors' mission is that Formby High School is an exceptional school at the heart of the local community and all students are nurtured, educated and inspired over a seven year school journey to achieve their academic and personal potential and become caring, engaged and responsible citizens.



WELCOME TO FORMBY HIGH SCHOOL

Intake	11 – 18, co-educational
Number on Roll	1125 (including 229 in Sixth Form)
Admissions Number (Year 7)	166
Status	Academy (since September 2011)
Number of Employees	75 teaching and 71 non-teaching staff
Annual Income	£7.2 million
Ofsted (November 2022)	Good for 'overall effectiveness' and in all areas
Free School Meals	8%
Pupil Premium	13%
SEND / Education Health & Care Plan	14% / 4%
Key Stage 4 Attainment	82% 4+ Eng/Ma and 62% 5+ Eng/Ma in 2022
Key Stage 4 Progress	+0.12 P8 in 2022 (+0.21 P8 four year average)
Key Stage 5 Attainment	A Level: 40% A*/A and 67% A*-B in 2022 / VTQ: 67% D*-D in 2022

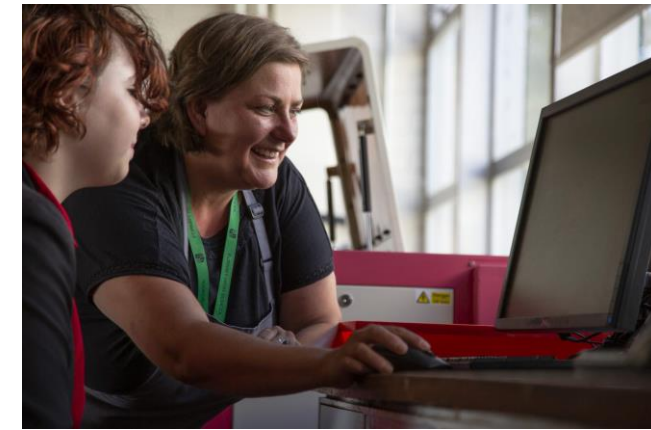


The school has a record of sustained academic excellence: attainment at GCSE is consistently above national averages and the school's average Progress 8 score over the last four years (2017, 2018, 2019 and 2022) is +0.21. A high proportion of students remain at Formby High School for their Sixth Form studies where a broad range of A Level and vocational courses are offered. There are currently 229 students across Years 12 and 13 who are based in the Sixth Form Centre, a separate facility to the main school. Outcomes for students in A Levels and VTQs are excellent. In 2022, for example, 67% of A Levels were graded A*-B and 67% of VTQs were graded Distinction or above. This excellent achievement supports students to progress onto meaningful and valuable post-18 pathways. Assisted by the High Flyers programme, each year a committed and highly ambitious group of students secure places to study at Oxford / Cambridge or are awarded a university place to study Medicine, Dentistry or Veterinary Medicine. In addition to the majority who progress to university, increasing numbers of students have been offered highly sought after degree apprenticeships with a wide range of organisations including Jaguar Landrover, Barclays Bank and the Police.

ACADEMIC ACHIEVEMENT



The school is highly inclusive and is proud of the curriculum and wider provision it has developed for children with SEND. It has an excellent reputation for the care, guidance and support it gives to its SEND cohort and its ambitious 'Reaching High' nurture curriculum is held up as a model of best practice by the Local Authority. The school has an ambitious plan to open a SEND Resource Base on site during 2023-24 and is currently working on plans for a new building to accommodate this facility.





Despite its track record of high academic standards, Formby High School is not an exam factory and places high importance on the development of the whole child, focusing on strengthening the key character attributes that all students work hard, respect themselves and respect others. The school is really proud of the opportunities it provides students outside the classroom. The Duke of Edinburgh's Award provides challenge and opportunity for many students, and the school has a national reputation for success in sport and the creative arts. Many students participate in Dance, Drama and Music and the school's performances would not look out of place in the West End! In recent years, the school's commitment to the wider curriculum and excellence in sport and the arts have been recognised through several awards including TES Creative School of the Year (2017), Educate Awards Outstanding Sport in a Secondary School (2019) and Educate Awards Most Inspirational Secondary School (2017). High importance is also placed on the development of students' leadership, and senior leaders are proud of the contribution made by the Junior Leadership Team and Sixth Form Ambassadors to the leadership of the school.



WIDER CURRICULUM AND OPPORTUNITIES



Formby High School is a community based on the values that all its members work hard, respect themselves and respect others. The warmth of the school community was recognised by Ofsted inspectors during their recent visit (November 2022) who said: *'The pupils describe Formby High School as a welcoming and friendly school where people's differences are celebrated. Pupils settle into school quickly and soon become part of the school community. Pupils are inspired to succeed. Pupils told inspectors that they are proud to attend the school.'*

Students are supported to achieve through positive relationships with their teachers and other adults in school. Pastoral care is the jewel in the crown – and students value the care, guidance and support they receive. Students' commitment to fundraising, their engagement with the local community and the enjoyment they take from whole school celebration assemblies that take place at Christmas and the end of the school year all evidence the valuable contribution they make to the cohesion and warmth of the school community.

Formby High School is a community school, serving the local community through student volunteering, the offering of facilities for community use and close and meaningful interaction with Formby's other local high school and seven primary schools. Members of the local community reciprocate, particularly supporting the school's varied and ambitious careers education programme.

Through opportunities presented by our exciting cultural programme, awareness raising on world issues and extra-curricular activities such as the Polyglots languages group, the importance and value of global citizenship are also promoted with students.



THE FHS COMMUNITY

Formby High School converted to Academy status in September 2011 and benefits from the freedoms that this brings. The Headteacher and Senior Leadership Team work closely with the Governing Body and benefit from their commitment and expertise in a broad range of professions. Senior leaders and Governors have forged positive working relationships based on mutual respect and a shared passion for doing the very best for the school and the community it serves. The Senior Leadership Team is only small, comprising:

Headteacher (School Performance & Strategy)	Deputy Headteacher (Pastoral Care and Well-Being)	Senior Assistant Headteacher (Teaching, Learning and Curriculum)	Assistant Headteacher (Assessment, Achievement & Curriculum)
			Assistant Headteacher (Director of Learning Years 11 to 13 & Attendance)



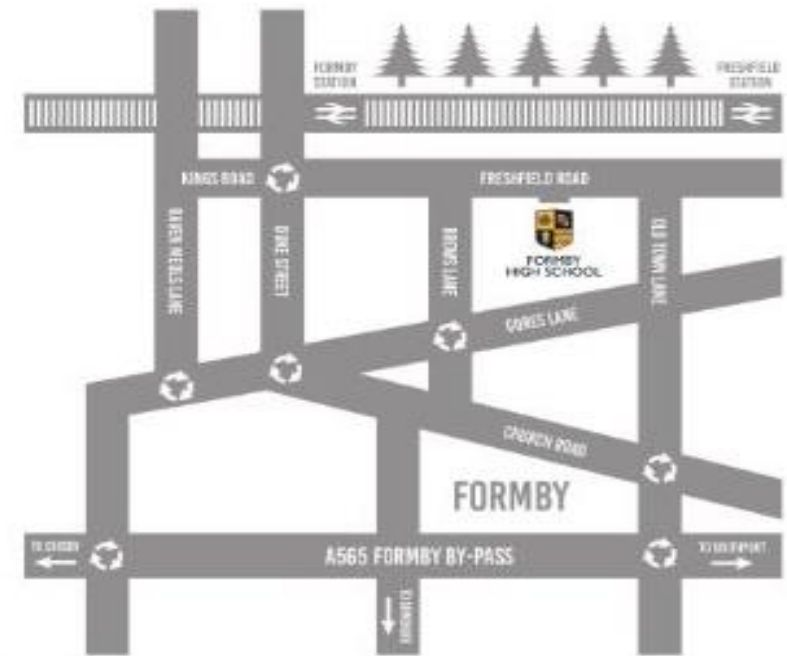
Governors and senior leaders know their school well and are invested in its success, and the new Headteacher will benefit from a very strong network of support around them.

Business leadership is effective and the school is in a very strong financial position. The new Headteacher can have peace of mind that very healthy reserves have been built up over time. The school's accounts are audited annually and are given a clean bill of health, evidencing excellent financial management and compliance with the academies' regulatory framework. Significant investment has been made in maintaining and improving the school's estate with £7 million of capital investment over the last 10 years. Much work has taken place to improve energy efficiency and reduce the school's carbon footprint, including the fitting of LED lights throughout all buildings, and approval has been received from the Secretary of State for Education and Sefton Council for the installation of solar panels which will generate approximately one third of the school's electricity. In terms of further developing the school's facilities, the next significant project will focus on upgrading the ICT network infrastructure where ambitious plans are currently being developed.

Formby High School employs 75 teachers and 71 members of support staff. Staff turnover is very low and the school and its students benefit from the stability this provides. Recruitment and retention is not a concern as new staff are overwhelmed by the warm welcome and support they receive from their colleagues, and they quickly settle in and feel part of the Formby family. Their expertise is developed through an appraisal system that focuses on professional growth and development, opportunities for leadership and access to a well-planned and engaging programme of CPD.

The school is situated in leafy Freshfield, situated in the north of Formby. Trains run every fifteen minutes between Liverpool and Southport on Merseyrail's Northern Line and the school is a short walk from Formby and Freshfield stations. The school is easily accessible by car with Formby being serviced by good roads links from the north and south. There is also an extensive network of cycle routes in the local area which allow for generally 'hills-free' cycling! Formby has a population of circa 30,000 and is located 12 miles north of Liverpool, a vibrant and progressive city with distinct character. The Sefton coastline is beautiful and Formby benefits from the National Trust nature reserve, home to its famous red squirrels. Just to the south Anthony Gormley's Iron Men can be found on Crosby beach. Formby has excellent local amenities and the school is only a short walk from the village centre. Although generally an affluent area, house prices are varied and recently there has been considerable investment in new housing.

The school buildings are set in 30 acres of grounds. There is plenty of green space and the campus is lined with mature trees. The original building was erected in time for the school's opening in 1938 and further buildings were erected as the school population grew during the 1970s. A purpose built Sixth Form Centre was opened on site in 2004 and the school has recently submitted a planning application to Sefton Council to build a new SEND Resource Base.



Due to the popularity of the school, most students live in very close proximity and walk or cycle to school with only a small number travelling from the north or south by train. As the school's admissions criteria gives high priority to siblings, families develop a long-standing relationship with the school as all of their children pass through.

Easily accessible from Formby:

- The Sefton Coastline (20 mins walk)
- Liverpool (30 minutes)
- Manchester (1 hour)
- The Lake District (1.5 hours)
- London (2 hours by train from Liverpool)





DISCOVER MORE

FORMBY HIGH SCHOOL

www.formbyhighschool.com

[Ofsted Inspection Report \(November 2022\)](#)

[Governors' Strategic Vision](#)

[Formby High School Curriculum Information](#)

[Year 7 Admissions Prospectus](#)

[Sixth Form Admissions Prospectus](#)

[Annual Audited Accounts \(2021-22\)](#)

[DfE Performance Tables](#)

If you are seriously considering an application and would like to visit Formby High School, please contact Mrs Forster, Clerk to Governors by email at: clerktogovernors@formbyhighschool.com.

It would be great to meet you!