



KS5 Mathematics A Level Outcomes (2017-2018)

	2017						2018					
	Cohort Size	A*-A	A*-B	A*-C	A*-E	Value-Added*	Cohort Size	A*-A	A*-B	A*-C	A*-E	Value-Added*
A Level Maths	12	58%	75%	92%	100%	+0.58	10	10%	40%	50%	90%	-0.70
A Level Further Maths	1	0%	100%	100%	100%	+1.00	1	100%	100%	100%	100%	+2.00

* where 0.5 equates to half a grade higher than LV3A estimate

KS4 Mathematics GCSE Attainment (2017-2018)

	Grade 4+		Grade 5+	
	2017	2018	2017	2018
Whole cohort	75%	71%	63%	48%
Disadvantage	65%	66%	50%	28%

KS4 Mathematics Progress 8 breakdown (2016-2018) by prior attainment and disadvantage*

***NB** Statistical significance for disadvantaged pupils is against the national for other pupils



Key stage 4

Ofsted

Brimsham Green School

URN: 109319 LAESTAB: 8034146

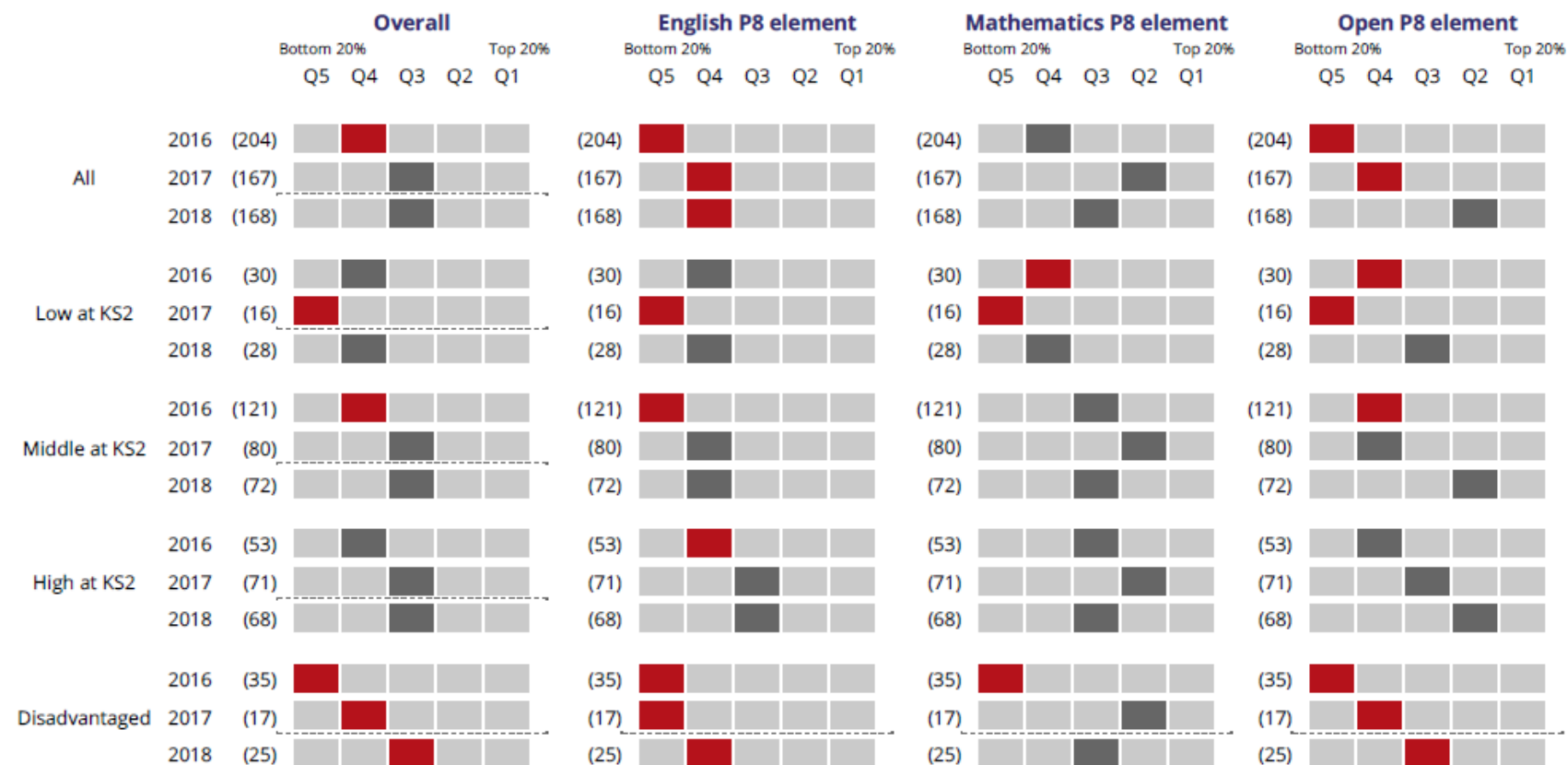
Relative progress for the past three years

Progress quintiles based on rank of progress score

() Cohort

Significantly
above national

Significantly
below national



Notes: Statistical significance for disadvantaged pupils is against the national for other pupils. Change in methodology or calculations is indicated by a dotted line. Quintiles are based on unadjusted progress scores apart from overall Progress 8 in 2018. Significance is only flagged for cohorts greater than 10. For cohorts of 10 or fewer, information is shown in grey. For further information on methodology see

www.gov.uk/government/collections/using-ofsted-inspection-dashboards



KS4 Mathematics Progress 8 scatterplot of 2018 outcomes by prior attainment, disadvantage* and SEN

***NB** Statistical significance for disadvantaged pupils is against the national for other pupils

Key stage 4 in 2018

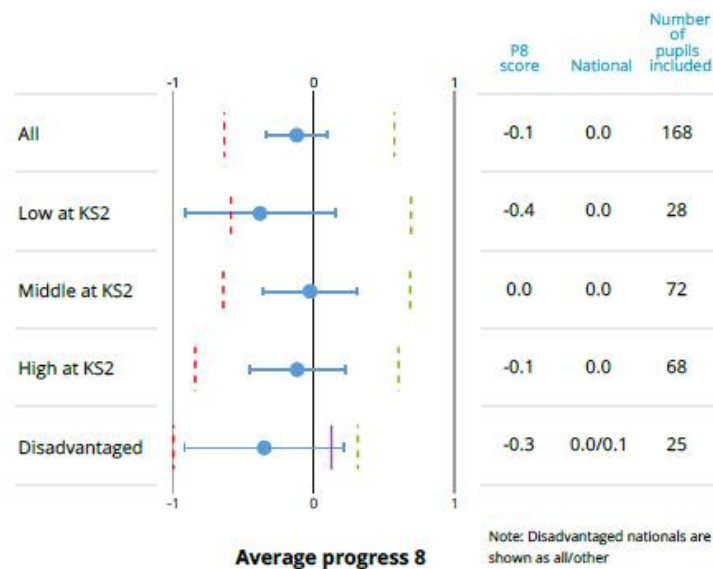
Brimsham Green School

URN: 109319 LAESTAB: 8034146

Ofsted

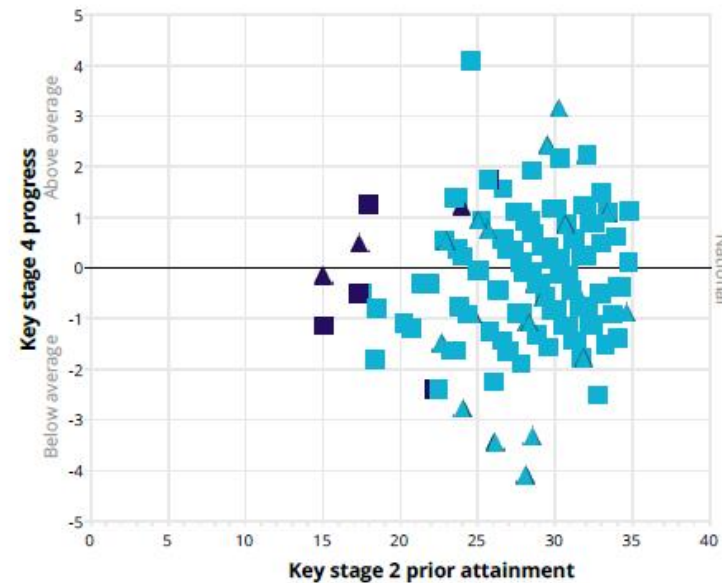
Mathematics element of Progress 8

--- Bottom 10% --- Top 10% --- Other national
□ Significantly above national & top 10%
□ Significantly below national & bottom 10%



Mathematics Progress 8 scatterplot

△ Disadvantaged □ Other SEN Not SEN



Notes: The mathematics element of Progress 8 is based on unadjusted progress scores. Significance is only flagged for cohorts greater than 10. For cohorts of 10 or fewer, information is shown in grey. Prior attainment is based on overall KS2 attainment. For further information on methodology see www.gov.uk/government/collections/using-ofsteds-inspection-dashboard