



# Plympton Academy

INSPIRING SUCCESS



TWENTY EIGHTEEN

PROSPECTUS

TWENTY NINETEEN



WELCOME



## WELCOME TO OUR PLYMPTON ACADEMY PROSPECTUS.

I hope it gives you an overview of what exciting opportunities are available at our school for your child.

At Plympton Academy we believe in inspiring a culture of success for all. Our ethos centres around developing a love of learning and a resilience and determination to tackle all the challenges that our students will meet. In this way our students become successful and fulfilled lifelong learners.

Our students are involved in every aspect of Academy life beyond the classroom; extra-curricular clubs and trips are always available, but our students also take an active role in shaping the future of the Academy through a wide range of student leadership activities.

As Principal I am proud to see our students leave this Academy as rounded, confident, independent young adults, equipped to take pride in their achievements and pursue their dreams.

We have regular open events and the school is happy to meet with potential students any time during term time. I look forward to seeing you at Plympton Academy very soon.

*"I was nervous about starting at Plympton Academy as my friend had moved away, but it didn't take me long to settle in. The transition from primary to secondary was really good and I was not worried about coming to the school."*

**- Year 7 Student -**

*"The teachers always support us when we need it. This helps us to reach our potential."*

**- Year 8 Student -**



INSPIRING SUCCESS at Plympton Academy

[www.plympton.academy](http://www.plympton.academy)



*"I was nervous starting secondary school as I was not used to being in a big school. I didn't know if I would fit in. I came to the induction days and met lots of friends and I have also made lots of new friends that were from different primary schools."*

**- Year 7 Student -**

*"I was so nervous starting at Plympton Academy, but really excited too. My tutor gave me lots of information and is very nice."*

**- Year 7 Student -**

## TRANSITION AT PLYMPTON ACADEMY

Ofsted talks highly of our excellent links with primary schools in Plympton, and further afield, and pupils across Key Stage 2 regularly visit us for lessons in Science, Sport, Catering and Performing Arts. Our teachers also visit the primary schools to teach French. Students from various schools are invited in regularly throughout the year to take part in a variety of activities, ranging from Design Technology and Art workshops to Maths challenges and taster sessions, where they experience hands-on lessons.

The transition process is very important and its aim is to make sure academic and pastoral arrangements are made in a way which ensures progression. Students' past experiences and knowledge are taken into account when we are planning provision for them. We work closely with the primary schools and visit every school to ensure that we have all the information necessary to help our students make the transition smoothly.

All new students come to us in July for induction days where they meet their tutors, spend time with their new tutor group and experience a range of lessons. For several students an enhanced transition programme is offered, where they come into school for a number of sessions to help them ease into secondary school. Students are invited onto the enhanced transition through close liaison with their primary school teachers.



TRANSITION

INSPIRING SUCCESS at Plympton Academy

[www.plympton.academy](http://www.plympton.academy)







## TEACHING & LEARNING

Students love the challenge of learning and at Plympton Academy we strive to offer all our students the very best learning experiences available. Our teaching is relevant, varied and challenging, imparting skills that make learning enjoyable and bring academic success. We want our students to be independent learners and to be resilient when the learning process proves challenging.

Our subject teachers aim to engage with all students by providing interesting and interactive lessons, monitoring student learning and intervening when required. We want to ensure that every young person can achieve their true potential whilst with us.

*"The subject and year leaders are a strength of the Academy. They work very well together as a group and are having a positive impact on improving outcomes across Academy."*

**- Ofsted 2016 -**

*"The teaching is good and characterised by elective planning, high levels of challenge and useful feedback to pupils."*

**- Ofsted 2016 -**





*"The Academy has been praised for its pupil outcomes, its 'Transition' programme - effectively supporting children from primary to secondary school, its clear culture of safety and effective lessons where no time is wasted."*

**- Ofsted 2016 -**

*"Pupils' progress is at the heart of the design of the curriculum."*

**- Ofsted 2016 -**

# OUR ACADEMY CURRICULUM

We pride ourselves on offering a rich, varied and aspirational curriculum for all of our students. We believe that young people achieve their best in a learning environment in which they feel valued and respected. We aim to motivate all our students through building enthusiasm for their studies and encouraging them to become independent learners.

All students at Key Stage 3 follow a broad and balanced curriculum which includes all the National Curriculum subjects, with all students studying English, Mathematics, Biology, Chemistry, Physics, History, Geography, a Modern Foreign Language, ICT, Sport and Spiritual, Moral, Social and Cultural Education.

As students move into Year 9 the range of subjects expands so students can choose from a wide range of options, including a full range of traditional GCSEs, BTEC and other vocational courses.

*"A curriculum to inspire success."*



CURRICULUM

INSPIRING SUCCESS at Plympton Academy

[www.plympton.academy](http://www.plympton.academy)



## SUPPORTING YOUR CHILD

Good learning happens when students feel secure and enjoy school life. We have high aspirations for every student and put in place the necessary support to help each child achieve. We provide high levels of pastoral support and work hard to instil our values in our students. We do not tolerate bullying and our students know who to talk to if they have any concerns. High achieving students are mentored to ensure their requirements are being met in mainstream lessons and through a range of enrichment and extension opportunities.

Support for students with special educational needs, whether these are academic, social, emotional or physical disabilities, is met in a variety of ways, for example: through class support, negotiated withdrawal to work with literacy or learning support assistants and through working in small groups.

*"The teachers helped me through my struggles. They were really supportive when I found the transition from primary school difficult. I feel a lot more settled and confident now."*

**- Year 8 Student -**

*"The teachers are very helpful with any subject that we struggle in. They are always happy to spend time helping us."*

**- Year 8 Student -**



*"The Academy environment is rich in its displays of pupils' work, particularly their art, and the pupils treat this environment with respect"*

**- Ofsted 2016 -**

*"Pupils are courteous and friendly and conduct themselves well. Their behaviour in lessons is good and they are well cared for."*

**- Ofsted 2016 -**

# PROUDLY PART OF A WIDER COMMUNITY

Plympton Academy is at the cornerstone of a thriving community and we encourage all our students to engage with their community through a range of events and projects. We aim to share our facilities with local people and work in collaboration with businesses and community groups to develop long lasting partnerships that will benefit everyone.



COMMUNITY





## STUDENT LIFE OUTSIDE THE CLASSROOM

At Plympton Academy we pride ourselves on offering a broad and rich range of extra-curricular activities to complement and enrich the regular academy day. Life beyond the classroom is incredibly important and allows young people to develop crucial skills and attributes such as confidence, independence and resilience.

Every student at Plympton Academy has been registered for PiXL Edge, a national scheme to develop students' employability skills. The scheme focuses on five key life attributes: leadership, organisation, initiative, resilience and communication. Students need to complete a series of activities within the programme for each of the key attributes and can qualify at three levels: apprentice, graduate and master. We have many extra-curricular clubs and teams including football, cross country, rugby, netball and basketball.

Those keen to be outside and explore can take part in the Ten Tors Challenge or join the Duke of Edinburgh Award programme. There are lots of other clubs including; darts, book club, Horrible Histories, Spanish and French Club, dance and music clubs, and a creative writing group.

*"I have carried out a range of activities including assisting the school librarian, completing 12 hours of sports leadership, taking part in a school production and helping out during open evenings for Year 5 and 6 students."*

**- Year 10 Student -**

*"I really enjoyed taking part in the activities and think that PiXL Edge is a good way of recording what I do, both in and out of school. I'm now working towards my graduate level and hope to complete that before I finish school."*

**- Year 10 Student -**



# FIRST RATE FACILITIES

Here at Plympton Academy we are extremely proud of all our sporting achievements and our facilities. The Plympton Community Sports Centre, based on our site, offers a fitness suite, dance studio, sports hall and badminton courts, and is open to students and the wider community.

Our new performing arts facility includes a full size dance studio.

Our newly completed 3G Pitch means that football and rugby training and matches can now be played all year round. All of our students benefit from this super new facility.

Our Football Academy players especially benefit from this new facility. The boys get extra football coaching, both during PE and after school, from Plymouth Argyle FC coaches.





# ADMISSIONS

## JOIN PLYMPTON ACADEMY

We will be consulting on our admission arrangements for 2019/20 through Plymouth City Council. The consultation will be live between 14 December 2018 and 24 January 2019. If you wish to find out about our Admissions policy or make any comments, please visit: [www.plymouth.gov.uk/admissionconsultation](http://www.plymouth.gov.uk/admissionconsultation)

If you would like a tour of our Academy at any point during the school day please get in touch and we will arrange that for you.

Our full admission policy can be found on our website: [www.plympton.academy](http://www.plympton.academy)

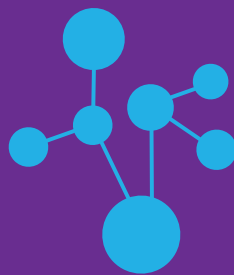
Mrs J Pengelly, Head of Year 7  
[pengellyj@plympton.academy](mailto:pengellyj@plympton.academy)

Mr B Turner, Assistant Principal and In Year Admission:  
[turnerb@plympton.academy](mailto:turnerb@plympton.academy)

“We believe in inspiring a culture of success for all of our students.”



# INSPIRING SUCCESS



“We believe in inspiring a culture of success for all.

In our Academy, individuals are equipped to take pride in their achievements and pursue their dreams.

Plympton Academy is the cornerstone of a thriving community that is stronger through collaboration.

We foster innovation and promote opportunity, creating resilient learners with a love of challenge.”



Plympton Academy, Moorland Road,  
Plympton, Plymouth PL7 2RS

**Principal:** Ms Lisa Boorman

**T:** 01752 338373

**E:** [enquiries@plympton.academy](mailto:enquiries@plympton.academy)

**W:** [www.plympton.academy](http://www.plympton.academy)

 [plymptonacademy](https://www.facebook.com/plymptonacademy)  
 [@PlymptonAcademy](https://twitter.com/PlymptonAcademy)