

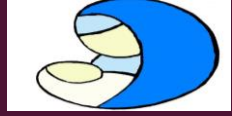
ST MARY'S R.C. PRIMARY SCHOOL

HORWICH



We Care, We Pray, We Work, We Play in Jesus' Way





We Care, We Pray, We Work, We Play in Jesus' Way

OUR MISSION STATEMENT

We Care and aim to develop a well-ordered community based upon the Gospel values, in which the children feel happy, valued, secure and confident so that they can fully take part in the life of the school.

We Play in harmony. We see ourselves as a loving and happy community following Christ's way and aim to promote all aspects of the physical and emotional well-being of each child.

We Work to ensure that the curriculum provided for our children is broad and balanced so that they can grow in knowledge and understanding. We work to develop the skills which will enable all children throughout the ability range to achieve their full potential.

We Pray that this is a school where the truth of the faith is experienced. A place where children are involved and take part in teaching and learning which will encourage a sense of wonder and response to God's gift of life and creation. A place where everyone feels fully involved in the opportunities provided for prayer, worship and liturgy.



We Care, We Pray, We Work, We Play in Jesus' Way

OUR AIMS

Ensure Catholic values are an integral part of all we do.

Cherish each child as an individual, respecting their rights, values and beliefs.

Deliver effective, professional teaching within a loving Christian and Catholic environment.

Provide a broad and balanced curriculum, which enables pupils to achieve their potential in terms of academic achievement, aesthetic appreciation and spiritual development.

Identify and monitor the needs of each child according to ability and aptitude.

Develop a range of skills and an enquiring and investigative approach to English, Mathematics, Science and the Creative Curriculum.

Foster links between home, parish and the local community, promoting good relationships and a sense of belonging.

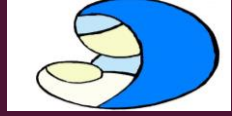
Prepare children for their future in our multi-cultural society by developing awareness and respect for other people's attitudes and beliefs.

Give equal opportunities for personal success in all aspects of school life.

Offer a well-ordered environment in which all are fully aware of behavioural expectations.

Encourage self-discipline and respect for others, encouraging, praising and positively reinforcing good behaviour, wholesome relationships and application to work.

Work as a team supporting and encouraging one another.



We Care, We Pray, We Work, We Play in Jesus' Way

INFORMATION

St Mary's R.C, Primary School
Victoria Road
Horwich
Bolton
Greater Manchester
BL6 6EP
Tel: 01204333625
Email: office@st-marys-horwich.bolton.sch.uk
www.st-marys-horwich.bolton.sch.uk



Voluntary aided primary
Ages: 4 to 11
Pupil number: 216



<u>Staff</u>	
Head	1
Deputy Head	1
Teachers	7
HLTAs	4
TAs	5
SENCO	1
Business Manager	1
Admin Assistant/SMSA	1
Site Manager	1
Out of School Club	7
Cleaners	2
Music Provision	3
French Teacher	1



Class size (per year group)
EYFS: 30
KS1: 30
KS2: 32



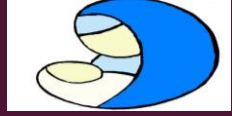
Inspections

Ofsted March 2020: GOOD

'Pupils and staff agree that this is a happy and welcoming school.
'Through a variety of leadership roles, pupils develop their character. Pupil chaplains spoke with pride about their charitable fundraising and visits to the elderly. Science ambassadors lead whole-school science activities. Pupils enjoy regular residential trips, with adventurous activities such as climbing and archery. Pupils develop as thoughtful and independent individuals'.

RE inspection: 28th Nov 2019

'is a school that should be proud of the welcome, welfare and witness to the Catholic faith that they provide for everyone in the school community'.



PUPIL OUTCOMES 2019

We Care, We Pray, We Work, We Play in Jesus' Way

KEY STAGE 1

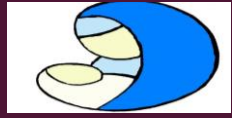
% reaching expected at end of KSI	St Mary's	Bolton	National
Reading	86%	72%	75%
Writing	79%	68%	69%
Maths	86%	74%	76%
Science	90%	78%	82%
Reading/Writing/Maths	76%	64%	65%

% reaching GDS	St Mary's	Bolton	National
Reading	38%	23%	25%
Writing	17%	15%	15%
Maths	34%	21%	22%
Reading/writing/maths	10%	11%	11%

KEY STAGE 2

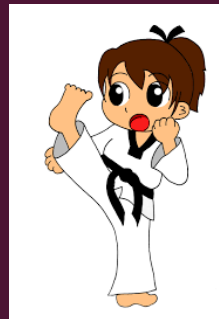
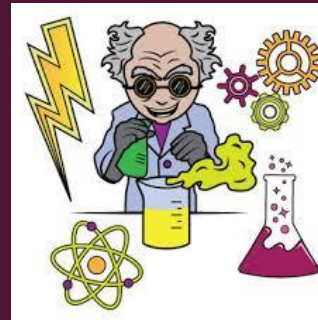
% reaching expected end of KS2	St Mary's	Bolton	National
Reading	84%	70%	73%
Writing	87%	78%	79%
Maths	94%	78%	79%
GPS	94%	79%	78%
Reading/Writing/Maths	74%	63%	65%

% reaching GDS	St Mary's	Bolton	National
Reading	26%	24%	27%
Writing	19%	21%	20%
Maths	35%	27%	27%
GPS	55%	38%	36%
Reading/writing/maths	16%	11%	11%



We Care, We Pray, We Work, We Play in Jesus' Way

SPORT AND EXTRA- CURRICULAR ACTIVITIES





We Care, We Pray, We Work, We Play in Jesus' Way

OUT OF SCHOOL CLUB



Breakfast Club: 07:30 – 08:55
After School Club: 15:15 – 18:00



Breakfast : Toast, cereal, juice/milk/water
Afternoon: Sandwiches, soup, beans on
toast, pizza, hots dogs



Arts and craft
Board games
Book corner
ICT

Music Sport
Jigsaws Colouring
Homework corner