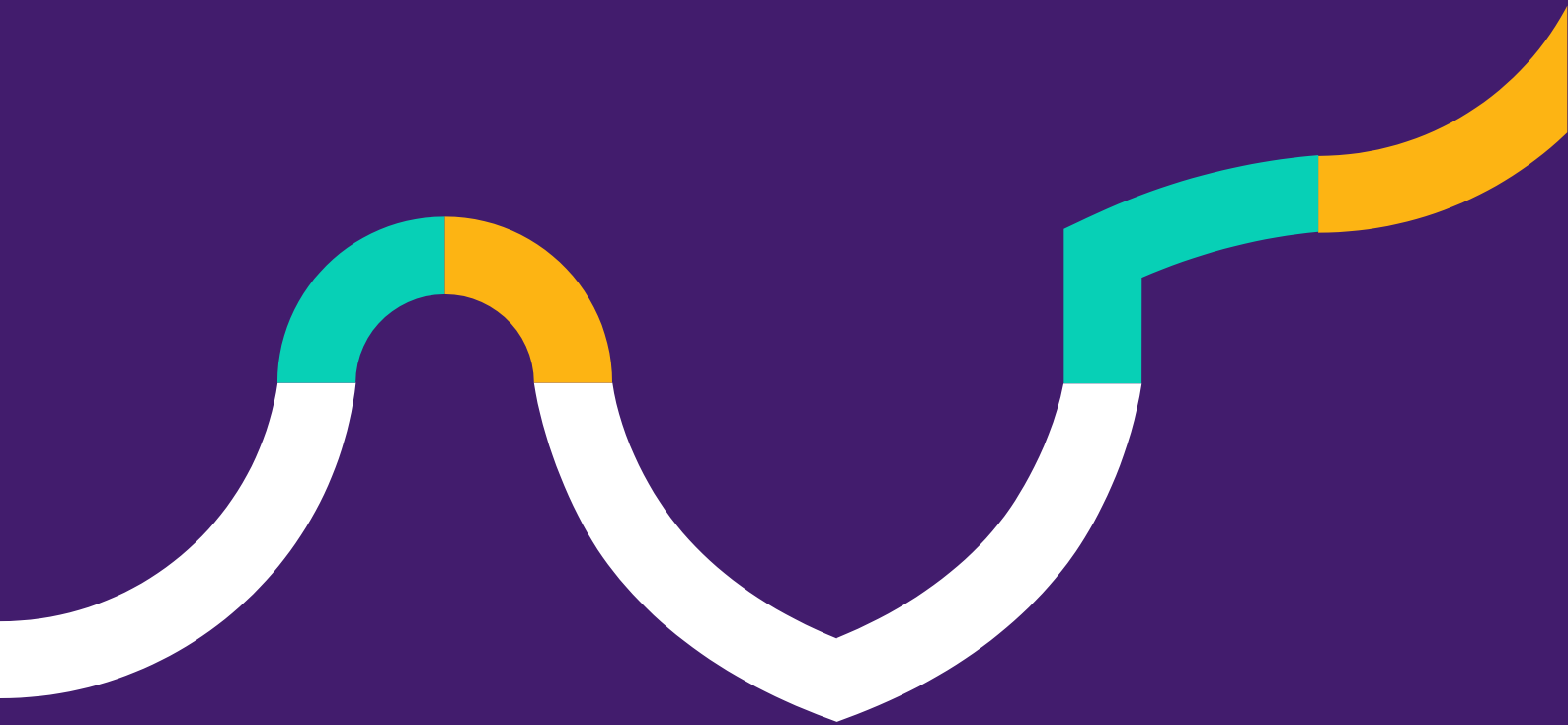




OneSchool
Global



Campus Principal Information Pack
Kenley Campus

2024



About the Campus

Kenley Campus has a highly qualified, enthusiastic and positive team that consists of outstanding staff, volunteers, students and parents who are passionate and energised by our corporate vision: A global education ecosystem that develops life-ready students who learn how to learn.

Kenley Campus has state of the art facilities with its technology-rich learning environment to assist our self-directed students from Y3–Y13 to excel at the broad range of national curriculum subjects available.

Up-to-date and current innovative use of technology enables our students to access a wider curriculum and team of professionals.

We are on a journey of continuous improvement and our vision is to be outstanding in all facets of the school from the academic results, to the pastoral care and wellbeing of the pupils.

We have a fantastic opportunity at our OneSchool Global Kenley Campus for a forward thinking, highly motivated and truly inspirational teaching practitioner to lead our school.

Why should I work at OneSchool Global UK Kenley Campus?

- **Smaller class sizes**
- **Positive work environment** – culture of respect and support from leadership, students and parents
- **Work-life balance** – no weekend sport and limited out of hours school activity
- Signature pedagogy – evidence based **self-directed learning** / progressive framework where teachers are coaches
- **Collaboration** with teachers nationally and internationally
- High-quality, modern, **technology-empowered learning environments**
- **Career progression** and advancement opportunities
- A **global school network**

“We are a caring school where students enjoy the experience but at the same time we set high expectations. We believe in creating a culture whereby students can learn to be successful, self-directed learners.”

43
Primary
Students



81
Secondary
Students



124
Total Students



Kenley Campus

Exam Results 2022/2023

KS2	
% GPVS Standard Achieved	38.64
% GPVS Higher Standard Achieved	0.00
% Maths Standard Achieved	76.92
% Maths Higher Standard Achieved	15.38
Average Scaled Score Maths	104.25
% Reading Standard Achieved	69.23
% Reading Higher Standard Achieved	30.77
Average Scaled Score Reading	105.42
% Writing Achieved (Teacher Assessment Based on Summer Term)	46.15
% Writing Higher Standard Achieved (Teacher Assessment Based on Summer Term)	0.00

KS4	
Attainment 8	5.73
Progress 8	0.07
Ebacc APS	5.23
% Students Achieving English & Maths 5+ (C)	84.62
% Students Achieving English & Maths 4+ (D)	100

KS5	
% Entries Achieving A*-A	11.11
% Entries Achieving A*-B	22.22
% Entries Achieving A*-E	94.44
Average Number of A-Levels Achieved per Student	1.8



Catchment Areas - Burgess Hill, Horsham, Sutton

Letter from our Regional Principal, Christopher Sweeney



Thank you for taking the time to show an interest in OneSchool Global and our position of Campus Principal at our Kenley Campus.

Current research suggests that current 11-year-olds will have 38 jobs in their lifetime and 9 different careers. That 80% of the jobs they will have do not yet exist. That their working life will be 'project-based', built around collaborative and team-orientated assignments. That they will require a mindset of life-long learning as they transfer their abilities from one context to another, demonstrating agility, innovation and sophisticated communication skills.

We believe that it isn't good enough to prepare students for the future using traditional methods of teaching and learning, therefore we have built our schools to reflect the future, not the past. We passionately believe in self-directed learning, where our students spend much of their school day in purpose built learning centres, working collaboratively on ambitious and creative projects. Led by teachers (often taking the role as coach), and underpinned by the national curriculum, our students develop an incredible breadth of talents; we value professional and personal skills as highly as we value academic success. We celebrate it regularly too!

Our results speak for themselves - self-directed learning works. Our last two years have seen our students achieve the best GCSE results in our history and all of our schools are judged as Good or Outstanding. Furthermore, we are proud that OneSchool Global has been chosen by the OECD to participate and demonstrate our work in its 2030 'Future Education' initiative. As well as recently being asked to present at the World Education Summit in the Cool Schools section.

We look for teachers who are passionate about cutting-edge learning, and who understand and are excited by the use of technology within pedagogy. All of our staff are given 100 hours a year of professional development time through our purpose-built Teacher Academy and blended learning platforms. You will never feel unsupported, your continued development is hugely important to us, and our Regional Principals are always there to support you, as are our group of national leaders who will be your peers and colleagues as well as those at your own campus. We are a genuine team at OSG and lifelong learners ourselves.

If you like to embrace change and lead with agility, positivity, and energy we would like to talk to you. If you have a desire to discover new and sophisticated ways of bespoke teaching and learning, as well as kind and restorative approaches to pastoral care, we are for you. All of our decisions, both day-to-day and strategically, are made to make our students lives better; for them to be happy and engaged learners, better equipped and more confident for their future lives. If you find all of this as exciting as we do, please do keep reading. We're really looking forward to meeting you.

Best wishes

Christopher Sweeney - Regional Principal

POSITION DESCRIPTION

Position Information

Position Title:	Kenley Campus Principal	Region:	UK
Department:	Teaching and Learning	Role:	Campus Principal
Reporting Manager:	RP	Author:	Matt Phillips
Approver:	Adrian Diffey	Approval Date:	June 2022

Position Purpose

The Campus Principal is the leading professional position within a Campus, reporting and accountable to the Regional Principal and the CA Team. The primary objective is to strategically and operationally lead Campus staff, students and stakeholders, to achieve the highest possible standards in teaching and learning, student achievement, quality, compliance and governance, aligned with the vision, values, and strategy of OneSchool Global.

Key Accountabilities

Vision, values, ethos and guiding principles:

- Through the leadership of the Campus, to ensure:
 - The ethos, values and guiding principles of OneSchool Global are consistently maintained to the highest possible standard.
 - The OneSchool Global Learning to Learn Framework is implemented as the founding principle in all teaching and learning programs.

Campus Operations:

- Foster positive relationships with the school's community.
- Promote a culture for learning in which everyone takes responsibility for a high standard of student behaviour, engagement and involvement.
- Ensure leadership and management promotes and develops staff and student wellbeing at all times.
- Take direct responsibility for student management matters arising beyond the remit of classroom teachers.
- Ensure the daily Campus 'LEAN' meeting is a structured means to communicate daily with staff.
- Lead whole-staff meetings, student assemblies, parent meetings and webinars as required, aligned with OSG vision, values and strategy; keeping the CA Team updated and involved.
- Ensure the Campus operates seamlessly as an all-through school, with the components and vocabulary of the Learning to Learn Framework applied within the Primary years and built up through high quality, seamless transition into Secondary years.
- Maintain orderly systems for student management and daily organization.
- Promote positive, appropriate and effective communications and relationships throughout the Campus community.
- Attend and participate in relevant stakeholder update events.
- Ensure highly effective governance routines by providing concise, accurate and timely reporting to the CA Team and inviting scrutiny in all areas of the Campus' operation.
- Manage critical incidents, ensuring relevant policies, procedures and advice are closely followed; relevant Regional Principals, CAs and RTLs are involved and updated.
- Work in conjunction with the Regional Support Office for advice on all areas of policy and procedure.

Educator and Leadership development:

- Provide line management, coaching and mentoring to Campus staff that is individualized, value-adding and fully aligned to the OSG vision, values and strategy.
- Ensure leadership and management is appropriately distributed through the Campus, in line with a plan that is agreed with the CA Team and Regional/Regional Principal.
- Ensure that all Campus staff understand and are held accountable for the responsibilities of their role, and the high standards expected from their work and conduct, through regular line management meetings as well as Campus appraisal procedures
- Ensure there are records of meetings to demonstrate leadership and governance at the campus in holding to account.
- Ensure that all staff (educator and support) access and complete the OSG Induction and ongoing development programs, and to ensure accurate records are maintained.
- Ensure staff develop as confident mentors and coaches of their colleagues.
- Ensure staff receive timely support for wellbeing related issues
- Ensure succession planning is planned and coordinated at the campus
- Consistently lead, manage and improve the performance of the teaching team to enhance the delivery of an inspiring quality curriculum leading to better outcomes for all. This should be through rigorous quality assurance, including student voice.
- Ensure that quality assurance programmes are quality assured by the Regional Principal
- Ensure The Assignment is the foundation of all student learning, is delivered through the LMS and quality assured.
- Ensure the Learning Centre is correctly used by staff and students, including training for staff and students in the use of different zones, and in routines for The Study and The Tutorial.
- Ensure that the Quality Assurance frameworks of OSG are implemented, and that sharply focused feedback and coaching are used to drive improvement in The Lesson, The Study, student outcomes and governance. Including clear next steps and follow-up. Ensure this is shared and reported to the DP.
- Continually strive for growth and improvement in the OSG Self Directed Learning journey and have a clear plan to achieve this.
- Implement the OSG recognised teacher recognition programs.

Timetable and Curriculum:

- Implement the OneSchool Global UK Strategic direction in curriculum, subject selection, and pedagogy.
- Ensure that in liaison with the Regional Timetabling Officer and the Regional Principal that the National timetable is fully implemented at Campus level
- Ensure differentiation and personalization of all learning programs. All students of all ability ranges are on a curriculum that provides the appropriate level of challenge and support.
- Ensure the Resource Approval procedure is consistently implemented by all staff.
- Ensure implementation of the Student Pathways program through full communication and planning with community stakeholders.
- Ensure consistent implementation and management of the Enrichment Program, aligned to the OSG Enrichment Program Policy.

Teaching Delivery:

- Where a teaching component is allocated, to teach as per OSG UK Teacher standards and to model the OSG Learning to Learn Framework as a foundation of all teaching and learning.
- All elements of Teaching and learning, including marking and assessment is at a consistently good level, as a role model for their campus staff

Compliance with statutory regulations, policy, self-evaluation, and improvement planning:

- Ensure all relevant statutory regulations are routinely audited and always met within the Campus.
- To ensure all staff – paid and voluntary – have completed mandatory training, including Safeguarding, Workplace Health and Safety and other such training required by the relevant UK statutory authorities and that accurate records are maintained.
- Ensure all Health and Safety legislation / Policy is adhered to and all necessary risk assessments are completed timely with appropriate approval.

- Ensure immediate reporting to the Lead CA and Regional Principal if statutory regulations are not met. To take immediate effective action and to report progress and completion to the Regional Principal and Lead CA daily until the standard is met.
- Report to the Regional Principal and CA Teams on compliance with relevant statutory regulations, timely and as required.
- Ensure 'inspection-readiness' of the Campus all times in relation to inspection or scrutiny from any regulatory authority.
- Ensure all Independent School Standards and Regulations (ISSR) are met at all times (England Campuses only)
- Effectively write, monitor, review and evaluate the Campus improvement plan, using relevant sources of evidence from Quality Assurance tools, and input from staff and the CA Team.
- Provide Campus self-evaluation and Campus Improvement planning to the CA Team, Regional Principal timely and as required, and to act upon feedback to improve the plan.
- Ensure the OSG UK Policy for Child Protection is given the highest priority within each Campus, including training for staff, volunteers, students and parents; systems for reporting and management of concerns; record keeping; recruitment of paid and voluntary roles; governance and regional reporting.
- Ensure all relevant Safeguarding training is completed and in date at Campus
- Implement all policies and procedures of OSG UK and to ensure records are kept for all staff – paid and voluntary – to confirm that Policies have been read and understood and that training related to specific Policies has been completed.
- Ensure that updated Policies are fully implemented timely and as required, in line with guidance from the Regional Support Office (RSO).

Student Outcomes

- Ensure that expectations of students' achievement are consistently high, led by the Campus Principal and modelled by all educators; including the setting of ambitious attainment and progress targets.
- Ensure the Campus upholds the importance and value of academic achievement and progress, and the development of self-directed skills for all students.
- Ensure an up-to-date analysis is maintained for academic progress and attainment, from all year groups, in order to identify achievement patterns. Including for the MAP Growth program.
- Ensure patterns of underachievement are promptly identified and that effective interventions are led by the Campus Principal at subject, teacher and student-level to close gaps between students' potential and their current achievement.
- Through quality assurance, to ensure the Regional process for reporting student progress and outcomes to parents is implemented to the highest standard at the Campus.
- Ensure feedback systems provide students with the information they require to improve their performance, from formative and summative assessments.
- Provide a clear, concise and accurate report of student progress to the CA Team, RP and RTL Principal, including the plan for next steps After every assessment point.
- Provide a clear, concise and accurate report of student achievement and progress across Key Stage 2, Key Stage 4 and Key Stage 5 after examination results have been received by the campus. This report should be shared with the CA team, RP and RTL.
- Ensure implementation of Student Achievement Awards and that a high value is placed upon the Global House Cup.

Management of Human Resources:

- Ensure a model of distributed appraisal and line management for every member of the Campus team.
- To ensure every member of Campus staff participates in the development and appraisal cycle, aligned with the OSG Appraisal Policy.
- Work strategically with the HR team to ensure appropriate and consistent methods for recruitment and selection of staff. Including compliance with the process for employment references, police checks, record-keeping and the setting of OSG interview questions.
- Partner with the HR team, CA team and Regional Principal to ensure the timely and effective management of conflict, investigations, and disciplinary matters, aligned with HR policies, advice and procedures. To ensure the RP, RTL and Lead CAs are kept updated.
- Apply the OSG Capability Policy and support measures, appropriately and consistently, in the event of unsatisfactory staff performance.
- Ensure all staff allegations or low-level concerns are followed through in adherence with the Safeguarding and Child Protection Policy, and records are kept on Staff Safe.

Student Support:

- Collaborate with the Campus and Regional Learning Student Support team, to ensure the curriculum and Campus Provision is personalised and appropriate for students with the full range of additional needs. Including students who are identified as more able and most able.
- Ensure Regional and Campus statutory obligations are met, to the highest standard, for students with additional learning needs at the Campus, and routinely reviewed.
- Ensure a high standard of staff training in the areas of student need at the Campus, and that training is updated frequently, under advice from the Regional Learning Student Support and external professionals.
- Ensure that external specialist reports relating to students' health and educational needs are fully translated into a provision plan for the student in school, with impact frequently reviewed.
- Ensure frequent communication is maintained with parents of students with additional learning needs, to enable parent participation in planning for educational provision. Including for transition into the Campus and transition into the workplace.
- Ensure that Learning support staff are effectively deployed to achieve the maximum benefit for the students in terms of progress and achievement.
- Ensure that Learning support provision and achievement is regularly reviewed to ensure students are making good or better progress.
- Ensure students that are on the Learning support register are supported in their transition into the workplace successfully.

Sustainability:

- Work with the Regional Principal and CA Team to ensure Campus expenditure on staffing, learning support and curriculum resources is aligned with the allocated budget. Including scrutiny of the arrangements for relief/supply teaching.

Regional Initiatives:

- Lead strategic planning and communication for one or more regional initiatives, if required.
- Contribute to OneSchool marketing and Public Relations activity as directed.

Regional and Global strategic planning:

- Under guidance from the Regional Principals, to ensure the Regional and Global strategic plan is fully communicated to all Campus staff and stakeholders.

Policy and procedure:

- Support, review and actively implement agreed OneSchool Global policies, procedures and guidelines as appropriate to the role.
- Ensure all OSGUK policies are fully implemented at Campus and understood by Campus staff.

General duties:

- Perform such other duties as may be requested from time to time, commensurate with the role.
- Uphold and promote the OneSchool Global ethos within all areas of responsibility.
- To contribute to, share in and promote the wider and longer-term vision of OneSchool Global.
- Promote equality, diversity and inclusion and demonstrate this within the role, adhering to the OneSchool Global Equal Opportunity Policy.
- Adhere to Workplace Health and Safety Policies and ensure all tasks are carried out with due regard to Health and Safety.
- Work with due regard to confidentiality and the principles of Data Protection, expecting others to do the same.

Personal duties:

- Model and live the OneSchool Global values at all times.
- Set an example of positive personal integrity and professionalism, with positive, appropriate, and effective communications and relationships at all levels.
- Ensure high standards are maintained, progressed, and promoted in all areas of work.
- Undertake appropriate professional development and positively participate in the appraisal of own performance.

- Communicate and co-operate effectively and positively with specialists from outside agencies where applicable.
- Attend staff meetings as appropriate.

Special Dimensions of the Role:

- Freedom to travel to Regional meetings, including the need for overnight stays when required.
- Ability to attend out-of-hours meetings, from time to time, for parent consultation, stakeholder updates and Regional meetings.

Safeguarding and Child Protection:

OneSchool Global is committed to safeguarding and protecting the children and young people that we work with. As such, all posts are subject to a 'safe recruitment process', including the disclosure of criminal records and vetting checks, and provision of employment references.

We ensure that we have a range of policies and procedures in place which promote safeguarding, child protection and safer working practice across the school. This is in line with the relevant UK statutory authorities expect all staff and volunteers to share this commitment.

Experience

Essential:

- Significant experience in a senior educational leadership position.
- A successful and high performing teacher – able to understand the challenges of the classroom.
- Experience of the Regional Curriculum and Assessment framework.
- Experience of the application of Child Protection legislation in schools.
- Demonstrated success in endeavours to date.
- Experience leading a modern learning environment and modern learning techniques. Including the use of various learning technologies.

Desirable:

- Experience facilitating strategic and school improvement planning processes.
- Experience leading successful compliance with regulatory and statutory frameworks.
- Experience working in environments with high levels of community engagement.
- Experience working in a variety of schools, or with a broader range of professionals.
- Experience working in a fast-paced and dynamic environment.
- Experience leading change.

Attributes for success

- Puts students at the centre and wants each to fulfill their potential.
- Delivers outstanding stakeholder focus.
- Develops effective positive relationships.
- Provide a professional, visible and approachable presence at all times and ensure the same from Campus Leaders in allocated Campuses.
- Has integrity. Inspires trust.
- Supportive of those in need be they student, staff or parent.
- Self-driven to succeed.
- Demonstrates resilience.
- Demonstrates diligence.
- Is a team player, and has evidence of being so.
- Positivity and humility.

Competencies

Critical for Success:

- Adhering to Principles and Values.
- Understands the value of a true working relationship between the CA/Trustees and Campus leaders, and can generate an atmosphere of mutual respect.
- Able to make rational decisions and to carry them through; knows when to consult.
- Strong verbal communication skills with individuals, and groups. An effective participant in meetings and in the leadership of meetings.
- Able to develop pride and loyalty to the school among staff, students and the community.
- High expectations of staff and students and sets high standards.
- Leading and Supervising.
- A Team worker
- Able to hold others to account.
- An intent and perceptive listener.
- Strong writing skills.
- Delivering Results and Meeting Stakeholder Expectations.
- Well organised. Able to plan and implement in a systematic manner.
- Adapting and Responding to Change.
- Able to cope with stress and to retain control in a crisis.



About OneSchool Global <https://www.oneschoolglobal.com>

OneSchool Global is one of the world's largest and most comprehensive, truly global schools. With over 9,500 students, over 120 campuses and over 2,000 staff and volunteers operating across 20 countries. OneSchool Global's campuses span five regions; Australia, North America, New Zealand, United Kingdom, and Europe – and cities including New York, Paris, Sydney, Rome, Bridgetown (Barbados), Auckland, Melbourne, Copenhagen, Los Angeles and San Francisco.

Our Values

At OneSchool each student, parent and staff member shall uphold the values of the School which include:

- **Integrity** – uprightness, honesty and decorous conduct, governed by the Holy Bible,
- **Care & Compassion** - kindness, consideration, and generosity to all,
- **Respect** – for all people, property, opinions, and authority,
- **Responsibility** – for our actions, progress and the environment and,
- **Commitment** – to self-discipline and the pursuit of excellence.

OneSchool Global recruit professional teaching and administrative staff from all walks of life and provide a positive and respectful working environment. This breadth of diversity of professional background along with ongoing professional development provides our schools with a strong teaching culture.

Our Ethos

At OneSchool, we are committed to a culture where students are encouraged to develop their full potential and acquire the discipline of learning how to learn while upholding Christian teachings and beliefs.

The truth and authority of the Holy Bible and strong family values underpin the commitment of the School to provide quality in every facet of education – curriculum, teachers, facilities, management, and discipline – in a safe and caring environment.

The Plymouth Brethren Christian Church Community

The Plymouth Brethren Christian Church was established in the early nineteenth century in Plymouth, southern England. They are a community of over 50,000 members across Australia, New Zealand, Europe, the Americas (including the Caribbean) and the UK.

They are deeply family-oriented and live, work and pray as 'Brethren' – a community of families held together by their common Christian belief. That said, just like everyone else, church members live and work alongside people of the same faith, other faiths, and no faith. Brethren believe that the Holy Bible is the true Word of God and that they are each called upon to live a life in accordance with its instructions.

Plymouth Brethren members attend regular church services each Sunday to celebrate the Lord's Supper and preach the Gospel. There is a strong and generous charitable spirit among Brethren, with many willingly devoting their time contributing to philanthropic efforts to relieve the load on humanity.

They congregate every Sunday in simple Meeting Rooms (Gospel Halls) to celebrate the Lord's Supper (Holy Communion) and to preach the Gospel and also gather daily for Bible readings and prayers. Find out what it is like to work alongside the Church Community via the short video below. You can also find out more about the Plymouth Brethren Christian Church at either of the following

websites: <https://togetherwearebrethren.com.au/> or, <http://www.plymouthbrethrenchristianchurch.org/>

“a global education ecosystem that develops life-ready students who learn how to learn, and achieve.”

How to apply:

If you wish to discover more about this exciting opportunity, need any further information, or you wish to have an informal discussion or campus visit, please contact:

OneSchool Global UK
The Precinct
Poseidon Way
Warwick
CV34 6BY
Tel: +44 (0)7848 452463 Mr Terry Arnett, HR Operation Partner
Email: recruitment@uk.oneschoolglobal.com

For more information about the campus please contact:

OneSchool Global UK
Kenley Campus
Victor Beamish Avenue
Kenley
CR3 5FX
Tel: 01883 338634
Email: kenley@uk.oneschoolglobal.com

Please send your application and supporting statement to: recruitment@uk.oneschoolglobal.com

We are looking forward to hearing from you.



OneSchool
Global

Learning to learn