



Gosford Hill School



“Be the best you can be”

Contents

About Us	4
What makes Gosford Hill unique?	4
The Gosford Hill School Site	5
What our Staff say	6
Benefits	7
Where is Gosford Hill School?	9
Life in Oxfordshire and The Cotswolds	10
The Curriculum	11
Teaching and Learning	12
Sixth Form	13
Pastoral Care	14



About Us

Gosford Hill School is a popular and successful school on an attractive and spacious site located in the 'village' of Kidlington, on the northern edge of the prestigious city of Oxford. It was founded in 1932 as a co-educational 'National' school, became a mixed community comprehensive in the 1960s, and became a standalone Academy from 2012. The school has more recently joined The River Learning Trust, a relatively small MAT made up of predominantly schools in Oxfordshire.

The school serves students from 11 to 18 across the whole ability range for a wide area of Oxfordshire – Kidlington, North Oxford, Bicester and surrounding villages such as Islip and the 'seven villages of Otmoor'; contract buses bring students into school each day, whilst most students walk or cycle to school.

There are nearly 800 students (including our Sixth Form) and a staff of around 100



teaching and support staff who work hard to achieve our ambitions for our young people.

Our vision underpins everything we do.

Gosford Hill School aims to be an inspiring school at the heart of the community, giving our students an excellent educational experience, equipping them as resilient life-long learners.

What makes Gosford Hill unique?

At Gosford Hill School we all have high expectations of each other and strive to be the best that we can be. The quality of relationships between students and staff is something that you will feel when you are here with us.



The Gosford Hill School Site



The school is accommodated in a range of buildings of various dates, including a superb joint school/community use Leisure Centre (with sports hall, swimming pool, flood lit all weather astro turf pitches and squash courts), a new nine laboratory Science block; three new Design and Technology rooms; six Information Technology rooms; a large staff room with stunning views over the surrounding countryside, subject staff learning areas, training and conference rooms. There is also a large staff car park.



There is significant investment to the tune of £1 million in the fabric of the school as part of the “Million Reasons to Love Gosford” campaign.

Every classroom is equipped with a large, interactive Clevertouch screen.

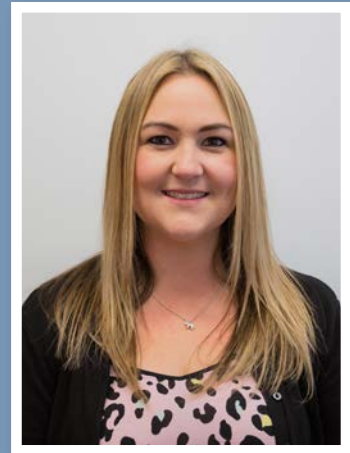


What our Staff say

“

Having worked at Gosford Hill School for over 10 years, I am incredibly proud to have been part of the journey that has seen vast improvement in this school. Throughout my time here I have taken multiple opportunities to be part of whole school roles that have supported my career development. The school has consistently encouraged this; GHS invests in their staff, nurtures our abilities and guides us to individual success.

Jo Brimble, Head of Sixth Form



”

“



Gosford Hill is a great school to work at - the pupils want to do well and are a real pleasure to work with. There are clear systems in place, both rewards and sanctions, to support with pupil behaviour. The staff are very welcoming and will support you in starting your teaching career as an ECT or taking the next stage in your career development. I've been teaching here for nearly twenty years so Gosford Hill must be doing something right!

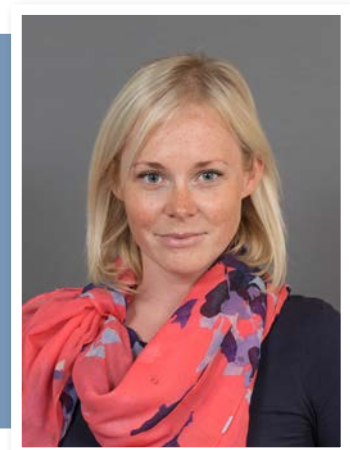
Helen Fuglesang, Teacher of History

”

“

There is such a wonderful warmth, togetherness, and drive at GHS, and I feel proud to say I'm part of a team ready and willing to go to exceptional lengths to ensure the very best for all our students.

Victoria Miller, Assistant SENCO



”

Benefits

Health & Wellbeing

- ▶ Occupational sick pay
- ▶ Maternity, paternity and adoption leave
- ▶ A comprehensive induction programme with a mentor to support you
- ▶ Discounted gym membership
- ▶ Regular Staff wellbeing surveys inform the work of our Staff Wellbeing group
- ▶ Lunch is provided on Inset Days and food is provided for colleagues participating in Parents Evening, Open Evenings and evening events
- ▶ Mental health first aiders on site
- ▶ Lots of parking on site, and good bus and train links
- ▶ Our Golden ticket scheme enables a colleague with 100% attendance in a term to leave early or come in late one day over the rolling year
- ▶ Access to our free, independent and confidential 24 hour Employee Assistance Programme, which provides advice and support and counselling
- ▶ Access to our School Counsellor

Workload

- ▶ Curriculum development is done within teams collaboratively, meaning that colleagues have less individual planning to do
- ▶ Our robust Teaching and Learning framework is clear and provides consistency of approach across the school
- ▶ We trust our teachers to decide on the best approaches to use with our students
- ▶ Our clear behaviour and rewards system is applied consistently, reducing any need for individuals to have to be in a confrontational situation with students
- ▶ Assessment and feedback is designed within each subject area because they know what works best for their subject
- ▶ There are no prizes for staying late! Work in a way that suits you and make sure you make time for yourself and your family
- ▶ There's no expectation to answer work emails outside of working hours



- ▶ We regularly survey staff to get honest opinions and ideas on how to improve
- ▶ We have an open culture of giving each other regular feedback in the spirit of all wanting to develop so that our students get the best education
- ▶ Every teacher has their own school laptop/Chromebook

Professional Development

- ▶ We don't use data targets for appraisal. Instead, everyone has one target which is to engage in continuing professional development as that's how we improve ourselves, each other, and our school, so that students get the best education
- ▶ As part of River Learning Trust, colleagues have access to a wide range of bespoke CPD, as well as opportunities for colleagues to work with and share best practice with colleagues in other local Secondary schools
- ▶ We are a partner in OTSA (Oxfordshire Teaching Schools Alliance) which runs regular CPD for colleagues
- ▶ We subscribe to We Are In Beta which provides networking opportunities to other colleagues trying to do what you're trying to do in schools up and down the country
- ▶ Early Career Teachers have a reduction in their teaching time, together with a mentor and bespoke weekly CPD sessions
- ▶ We support colleagues through MA's, and National Professional Qualification courses such as NPQSL and NPQML

Where is Gosford Hill School?

Gosford Hill School is situated in the 'village' of Kidlington, on the north western edge of the university town of Oxford, and holds the accolade of being the largest village in Europe. Kidlington is 5 miles from Oxford centre, and 7 miles from Bicester, to the north. It is at the gateway to the Cotswolds, an area of outstanding natural beauty, to the west.



▲ Church Street, Old Kidlington

Transport Links

Kidlington is incredibly well connected transport-wise. The school has an incredibly large car park, making it easy for colleagues to drive to work. We also have ample cycle racks for those colleagues preferring to cycle. By road, we are just off the main A34, which connects the M40 and M4, with easy access to London and the M25.

By train –

We are within walking distance from Oxford Parkway Railway Station, which has direct trains to Bicester, High Wycombe and into

Marylebone in London. Marylebone is just a 50 minute train journey. Oxford Railway Station is only 6 miles away.

By bus –

There are regular service buses from Oxford, Bicester and Woodstock.

Nearest airports –

Kidlington is a 46 mile journey from Heathrow Airport, 67 miles to Luton, 84 miles to Gatwick, and 60 miles to Birmingham Airport.



▲ Only 50 minutes to London from Oxford Parkway



▲ Kidlington boasts excellent regular bus services

Life in Oxfordshire and The Cotswolds

- ▶ Blenheim Palace
- ▶ Oxford with its world-renowned University Colleges, Parks, Gardens, Pitt Rivers Museum and Ashmolean Museum
- ▶ New Theatre, Oxford and the Playhouse
- ▶ Oxford Bus and Motor Museum
- ▶ Oxford Ice Rink
- ▶ Cherwell Boathouse, including punting
- ▶ Crocodiles of the World in Brize Norton
- ▶ Didcot Railway Centre
- ▶ Harcourt Arboretum
- ▶ Pendon Museum
- ▶ The Oxfordshire Museum, Woodstock
- ▶ Waterperry Gardens, Wheatley
- ▶ Henley on Thames, famous for its summer regatta and festival
- ▶ National Trust properties at Greys Court, Buscot Park, Upton House, Claydon House and Nuffield Place
- ▶ Waddesdon Manor
- ▶ Shopping at Bicester Village
- ▶ Stunning countryside for walking, cycling, horse riding and canoeing or relaxing on a narrowboat
- ▶ Stowe Gardens
- ▶ Burford
- ▶ Chipping Norton



▲ The spectacular Blenheim Palace



▲ Quaint canal-side cottages in Kidlington



▲ The historical City of Oxford



▲ Shopping at Bicester Village

The Curriculum

Our curriculum is broad, balanced and exceeds National Curriculum requirements. It is highly ambitious and rigorous, providing a solid foundation for life in the 21st Century.

Our Curriculum aims:



- ▶ To promote an enthusiasm for learning and a thirst for knowledge and thus the foundation to become a life long learner.
- ▶ To enable students to develop their understanding of powerful subject knowledge, concepts and skills across a wide range of subject areas, thus becoming more successful independent learners.
- ▶ To support students personal development, increasing their confidence and broadening their horizons so that they are successful in their academic career and future.

Each Curriculum is built on our five principles:

- ▶ Knowledge
- ▶ Sequencing
- ▶ Challenge
- ▶ Assessment
- ▶ Workload

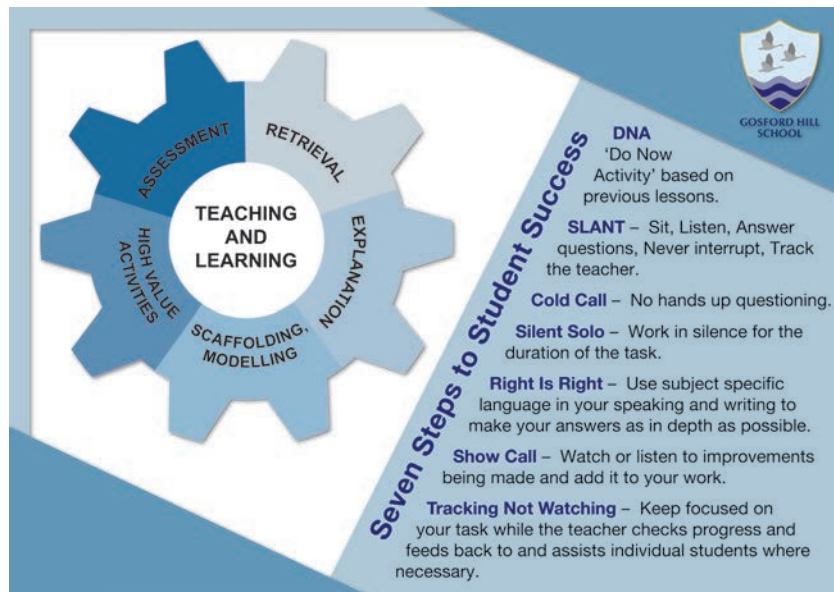


Our Personal Development Curriculum is delivered through a PSHE lesson, which is delivered by tutors once a week. It covers all aspects of personal development including study skills, personal relationships, moral and social awareness, citizenship, careers, sex and health education and social issues.

We also have 20 minutes of Student Development Time each morning with a well planned programme aimed at improving student awareness of current issues, as well as incorporating our assembly programme.

We are incredibly proud of the wide range of extra-curricular opportunities that we offer our students here. These are published in more detail on our school website, but include many sporting clubs and fixtures, music clubs, drama, languages and our annual School Production. We offer a number of overseas trips including our Ski Trip, Sports Tour, World Challenge, and Creative Arts Trip. The Duke of Edinburgh Award scheme is undertaken by large numbers of students, supported by a diverse and committed team of staff. There are certainly many opportunities for colleagues to get involved.

Teaching and Learning



Our Teaching and Learning framework is based on five research-backed principles. This is supported by our Seven Steps to Student Success, which provides a consistency of language in every classroom and ensures that we create the best learning environment for all of our students to learn in.

The school is structured into subject departments, each led by a subject specialist. All Subject Leaders are line managed by our Deputy Headteacher (Quality of Education), providing consistency across the school.

The school day is structured into five, one hour lessons as follows:

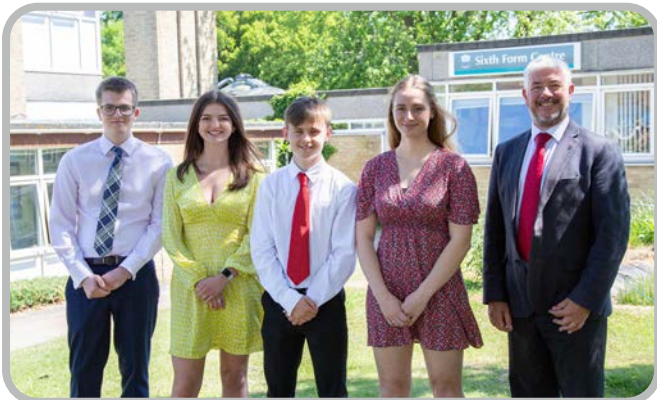
8:40am to 9:00am	Student Development Time
9:00am to 11:00am	Lessons 1 & 2
11:00am to 11:20am	Morning break
11:20am to 1:20pm	Lessons 3 & 4
1:20pm to 2:00pm	Lunch break
2:00pm to 2:20pm	Reading
2:20pm to 3:20pm	Lesson 5

Sixth Form

Our well-established, and incredibly successful Sixth Form offers a wide choice of three or four A Levels from a list of 22 different subjects. Results have been very good, placing us within the top three performing comprehensive schools in Oxfordshire based on student progress.

We take students from other schools who transfer here at 16+. Whilst our Sixth Form numbers are relatively small it allows for a very personalised curriculum with students being well supported and achieving highly.

Most students achieve their first or second choice University place, many of which are Russell group establishments. We regularly get at least one student per year into Oxbridge.



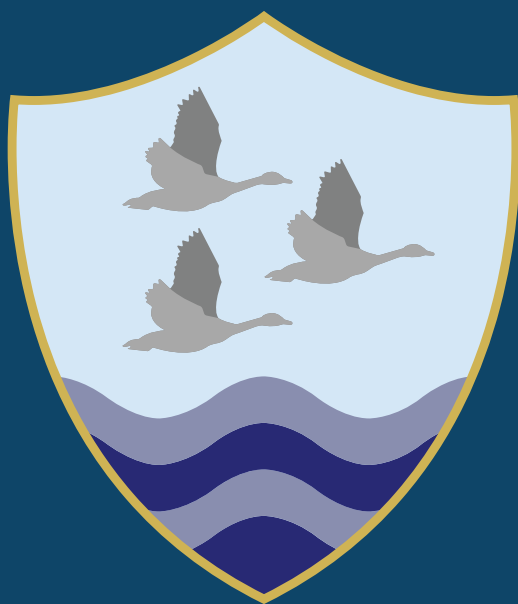
Pastoral Care

A distinctive feature of Gosford Hill School is the strength of the pastoral system and the school's commitment to each individual. All teaching staff are tutors and we work hard to ensure that students are supported throughout their time at Gosford Hill School both academically and pastorally.

Students join tutor groups of about 30 students from their own year group. All tutor groups have one main tutor and a Year Leader who share the responsibility of pastoral care. Our wider Student Services Team, consisting of our Student Welfare Manager, Pastoral Administrator, Pastoral Support Assistants, Attendance Officer, School Nurse and School Counsellor provide incredible, bespoke support for our students, led by the Assistant Headteacher (Student Inclusion and Celebration).



Gosford Hill School is an equal opportunities employer and is committed to safeguarding and promoting the welfare of children and young people. We expect all staff and volunteers to share this commitment. Due to this post having access to children and/or vulnerable adults, candidates will be required to undertake a Disclosure and Barring Service check. The possession of a criminal record will not necessarily prevent an applicant from obtaining this post, as all cases are judged individually according to the nature of the role and information provided.



**GOSFORD HILL
SCHOOL**

September 2022