



THE
Beaulieu Park
SCHOOL



A NEW SCHOOL
opening in 2018



THE Beaulieu Park SCHOOL

THE BEAULIEU PARK SCHOOL is Essex's first 'All Through' school and the primary phase opens for reception students in September 2018 with the secondary phase opening in September 2019. The new buildings and facilities cost £34m and the new school is being built to meet the growing demand for primary and secondary school places as a result of the new development at Beaulieu.

THE NEW SCHOOL

We are extremely proud and privileged to have such a rare opportunity to open and create a school from the start and to set the very highest expectations from the opening of the school.

The Beaulieu Park School will open in September 2018, welcoming our first cohort of 60 reception aged children in two classes. In September 2019, 180 Year 7 students will be admitted. Year on year the school will grow, providing 420 places for local children between four and eleven years old by 2024 and 900 places for local children between 11 and 16 years old by 2023. At The Beaulieu Park School we are creating an all-through school where children can develop strong relationships with their teachers from age four upwards to when they leave school, preparing them well for going to university when they complete their secondary education. We are all committed to giving our pupils the best possible start in life in an outstanding school that the communities of Beaulieu and Chelmsford can be proud of.

Our 'all through' school will be distinctive from other schools. Students will make outstanding progress through curriculum continuity, not affected by phase breaks, which research has shown can lead students to fall back in their educational progress. Cross-phase teaching will enable teachers to share expertise and resources and maximise the progress of every individual child. A common ethos through the school will ensure that students understand the expectations of good behaviour and hard work and motivate them to be highly ambitious from a very early age. Older students will act as role models and support the achievement of those in earlier phases, both through academic and extra-curricular links. Most importantly, there will be a sense of community that cannot be replicated in a stand-alone primary or secondary school, driven by strong leadership and encompassing parents and the local community.

OUR FACILITIES

The school will benefit from state of the art facilities for all children. As well as the latest technology in every classroom, every student will also have access to:

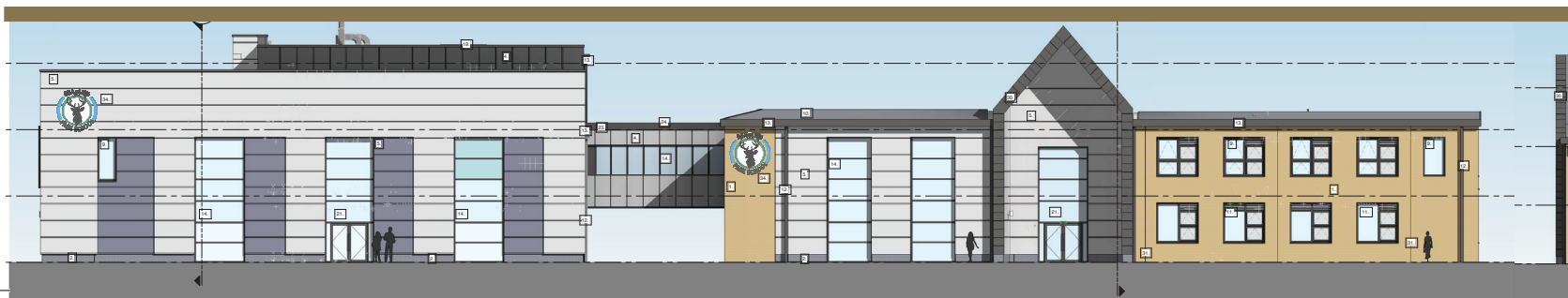
- Large sports hall
- Purpose built dance studio
- Outdoor, floodlit multi use games areas
- Specialist Science laboratories
- Design and technology rooms
- Music rooms and individual practice rooms
- Large library and learning resource centre
- Drama studio
- Large theatre for performances and assemblies
- Outdoor learning spaces
- Large play areas and playing fields

WHAT DOES AN ALL THROUGH SCHOOL MEAN FOR MY CHILD?

In many ways, the Primary and Secondary School will operate conventionally and be separate to each other. They will occupy different buildings and playgrounds. Each school will have an individual identity. Your son/daughter will not routinely mix with children in the secondary school if they are in the primary school and vice versa i.e. at lunchtime, in corridors etc. They will experience a traditional age appropriate education at each phase.

Uniquely however, The Beaulieu Park School 'all-through' philosophy means that opportunities will be open to your child that are traditionally reserved only for attendees of independent schools. The School will provide:

- an environment where there are more teaching styles, and levels of experience than any other. Where subject specific practitioners from the secondary school can work with students in the primary school to stretch and challenge and primary specialists can work with those in the secondary school that need additional support
- a chance for primary students to learn in specialist performing arts / sports / technology / science facilities not accessible to most primary school students



- a complete and uninterrupted oversight of learning and progress from the age of 4-16, providing consistency and fluency
- an ethos that will give each child, their family and teachers much higher expectations of what can be achieved.
- unparalleled pastoral care
- high aspirations - from day one and without interruption
- an ability to offer a broad and exciting curriculum from the beginning
- leadership and mentoring opportunities that will develop confidence, resilience and character

LIFE IN THE PRIMARY SCHOOL

The Beaulieu Park School will celebrate an important and wonderful stage in your child's development. From the very first day at school we will make their time with us a happy, exciting and inspiring journey towards secondary school.

When your child joins us, they will be taught in an environment which will enable us to focus on their individual development. This approach will help them to achieve their full potential both inside and outside of the classroom. At The Beaulieu Park School, all of our children will have a strong sense of who they are and of the world around them.

By the time your child moves into the secondary phase, they will be fully equipped to tackle the next stage in their educational career and go on to achieve great things in their future.

At The Beaulieu Park School, your child will love to learn - a love of learning will be part of our culture and part of who we are as a school. We believe in learning through real life experiences and our curriculum will be full of exciting opportunities that will enable your child to achieve their full potential.

Your child will be happy, articulate and confident. Key to this will be the partnership we forge with incredibly supportive parents; dedicated staff; and the wider community.

EARLY YEARS FOUNDATION STAGE (EYFS)

Our provision at The Beaulieu Park School will provide a strong foundation for your child's future learning, including developing a positive attitude to learning. In giving your child a broad range of knowledge and skills we will be laying the foundation for excellent future progress throughout their school and life. To make this happen, learning and development opportunities will be planned around your child's specific needs and interests and regularly assessed and reviewed. Adults will

respond to those needs and interests, guiding their development through warm, positive interactions in an encouraging, stimulating and a well-resourced indoor and outdoor environment.

In the Reception Year, it is the adult's role to extend and provide further challenge to your child's learning. Here we will seek to initiate and offer great depth to your child's experiences. Our staff will skilfully interact and sensitively scaffold, support and enhance your child's knowledge, skills and understanding. In addition, we will seek to help them to develop their thinking through their participation in activities and with the skilled involvement of our staff.

ENVIRONMENTS

All children have daily access to well-planned stimulating learning environments, indoors and outdoors. These environments will give them opportunities to be active and physical as well as quiet and reflective. Each classroom will have sufficient chairs and tables for children to be seated when appropriate, and also plenty of carpeted areas for children to engage in activities. There will be periods of time each day when all children in reception will be engaged in learning activities at their tables as class teaching is gradually introduced and developed throughout the Reception year. We are very fortunate at The Beaulieu Park School to have dedicated outdoor learning spaces and your child will benefit enormously from using them.

The early years environment - inside and outside is viewed as a whole, providing different areas where resources, materials and activities are freely and easily accessible.

The areas of learning in the environment include:

- role play area
- book/reading area
- mark making/writing area
- mathematical area
- construction area
- small world area
- music area
- creative area
- malleable area
- ICT opportunities
- sand/water areas

It is important to develop learning opportunities outside as outdoor learning provides opportunities for: the acquisition of gross motor skills, taking risks, fostering a love of nature and the environment, large (and possibly messier) play which is not possible indoors, learning experiences suited to the outdoor environment and physical fitness.



THE BEAULIEU COMMUNITY

The Chelmsford Learning Partnership recognises that not only is The Beaulieu Park School a new school but it is a new school in a new community. As such, it is important that the new school is an integral part of the new Beaulieu development. As a trust with extensive links in the North Chelmsford and Beaulieu area already, we believe we are in a unique position with regard to promoting community cohesion. The ethos and vision of our educational provision is all about developing the sense of community and the trust is very proud of its achievements in this area. As an all through school, we also believe The Beaulieu Park School will be 'the hub' for the new community. Our experience in working with the community is central to the success of our school. Regardless of the make up of the new community in the Beaulieu development, our inclusive approach and focus on the importance of working with the community as a trust, means that we will be able to cater for the needs of everyone.

Like all the schools in our trust, our facilities are open to the public for use in the evenings, weekends and school holidays. It is important to recognise the outstanding roles that the schools in our trust already play in their communities. All our schools play an important active role in working with our communities and the trust firmly believes that schools are there to serve their local communities. That is why we do not believe in academic selection and why our admissions arrangements prioritise those families who live near our schools. The trust already has excellent community links in the area: Chelmsford Rugby Club, Springfield Cricket Club, Chelmsford Scouts, Springfield Football Club, All Saints Church Springfield, MENCAP, Dance 49, All Stars Cheer and The Swim Academy are all local groups who we work with regularly and support and who regularly use our facilities. The trust believes that it is imperative that we work closely with community groups, not just using our premises, but working together on performances and projects as well as supporting local groups.

THE CHELMSFORD LEARNING PARTNERSHIP

The Chelmsford Learning Partnership is the name of the academy trust that is responsible for running The Beaulieu Park School (The trust was formerly known as The Boswells Academy Trust up to September 2017). In September 2017, the trust was delighted to be approved as the sponsor for The Beaulieu Park School. The trust is an emerging, local multi academy trust that has, at its heart, a commitment to provide an outstanding education for local children.

The trust is also responsible for The Boswells School in Chelmsford. The following schools are in the final stages of due diligence and are considering joining our family of schools from April 2018: The Tyrrells School, Chelmsford; Perryfields Infant School, Chelmsford; Barnes farm Infant and Junior Schools, Chelmsford; Roding Valley High School, Loughton.

Whilst the trust is responsible for running a number of schools, we believe that each school is autonomous and should have their own individual identity and ethos. In each of our schools, you will find the following:

- Each school has their own unique ethos, values and approach
- Each school has a Local Governing Body overseeing the school
- Each school will have a Headteacher/Head of School with autonomous responsibility for the running of the school
- Teachers and support staff working with their children
- A Tailored approach to teaching and learning depending on the needs of each school
- A Personalised curriculum depending on the needs of the children in the school
- An Inclusive Admissions policy based upon serving the communities that each school serves

KEEP IN TOUCH

You can find out more about the school at our website: www.beaulieuparkschool.com, on our Facebook Page: **The Beaulieu Park School** and on our Twitter Page: **@BeaulieuParkSch**

You can also contact us at admin@clptrust.com