

M | P | W

Mander Portman Woodward

Cambridge Prospectus

2017/2018



www.mpw.ac.uk

MPW Cambridge, established in 1987, is a co-educational GCSE and A level college accepting up to 220 students each year. The college is situated in spacious and attractive premises a few minutes' walk from the centre of Cambridge.

No student is accepted at the college without attending an interview, the initial purpose of which is to provide parents and students with the best educational advice. If we feel that it is appropriate to offer a place at MPW, every effort is made during the interview to identify the right programme and options, often by means of detailed discussions with individual subject tutors.

Once a student is accepted at MPW, our aim is to provide the most effective possible preparation for the specific exams that



College Inspection

The college is registered as an independent school with the Department for Education and as such is subject to regular inspections by Ofsted (Office for Standards in Education). The college is currently rated by Ofsted as Outstanding in all assessment areas. The full report from our November 2016 inspection is available on our website.

he or she will be taking. Our method is based on intensive tuition in small groups, close personal monitoring of academic progress and regular examination practice. We insist on strict punctuality in the attendance of lessons and the submission of homework, but are otherwise free of many of the school rules that today's students find restrictive.

Our reputation is based on having created a college in which students can enjoy working hard. The environment

is friendly and informal, the tutors experienced and enthusiastic and the atmosphere positive and conducive to success. The systems that we have adopted have been developed over many years and are shared by all the colleges in the MPW group.

“

Pupils achieve exceptionally well and make outstanding progress across a wide range of subjects.

Teachers' excellent subject knowledge along with pupils' positive attitudes towards their learning ensure that outcomes are outstanding.

”

—Ofsted Inspection Report November 2016



We have a highly qualified team of tutors, the majority of whom have several years' teaching experience at MPW. Many are examiners for the A level and GCSE subjects that they teach.

Tuition

Tuition takes place between the hours of 9.00 am and 6.00 pm on weekdays. Syllabus coverage is focused on the precise demands of the final examination and particular emphasis is placed on exam technique. It is a fundamental principle at MPW that all students in a given group are studying for the same examination on the same board on the same date. Under no circumstances do we mix students who are studying on courses of different durations. Of equal importance is our commitment to fewer than 10 pupils in any one class. With these group sizes it is possible to combine a lively and stimulating classroom atmosphere with the close individual attention that each student requires.

Lessons are supplemented by one-to-one surgeries, extra laboratory sessions and workshops on past papers. All students may attend study skills seminars designed to improve revision technique, speed reading, note taking, memorisation and time management. MPW writes and produces its own study materials in all major subjects and students are encouraged to seek help from tutors between lessons when facing difficulties with a particular topic.

Facilities

The building has bright, spacious teaching rooms, two study centres, an exam room, a student common room with canteen facilities, three science laboratories, two computer rooms and an art room. All subjects have access to audio-visual facilities and interactive whiteboards.

The work of the classroom is supported by a full range of teaching resources. There is a comprehensive selection of past exam papers and relevant journals and a wide range of textbooks for borrowing and reference. The college is an exam centre for all awarding bodies and all public examinations are sat on the premises.

Supervision of Progress

MPW is well known for its friendly and supportive personal tutor system. Each student is assigned to a personal tutor whose role is to supervise the academic progress, university applications and general welfare of a small group of students. Personal tutors keep in frequent contact with subject tutors and parents and are able to devote much of their time to helping and encouraging the students under their care.

Regular, individual meetings are held to discuss progress in class, homework, test results, UCAS applications and reports. Written reports from the subject tutors and a covering report from the personal tutor are sent out four times over the course of each year. There are also parents' evenings that provide an opportunity for students' progress to be discussed face to face with tutors and personal tutors.

Examination Practice

We place considerable emphasis on regular testing under timed conditions, which we find plays a major part in building students' confidence and motivation. A level students sit weekly timed assignments throughout the course of the Autumn, Spring and Summer terms. Most timed assignments test the understanding of work covered during the previous week. The remainder test the understanding of work covered during the previous half term or term, thus ensuring that revision is a continuous and cumulative process throughout the year. Students on GCSE courses sit end-of-unit tests twice per term in the Autumn and Spring terms.

Full mock examinations for the Summer examination session are held in March. All timed assignments, end-of-unit tests and mock examinations take place under supervised conditions that replicate the conditions under which public exams are sat.



“

Rigorous and regular assessment of pupils' work is a strong feature of teaching in this college. Pupils sit past-examination papers at least twice a term under examination conditions in a designated examination room and acquire the essential skills which enable them to thrive.

”

—Ofsted Inspection Report November 2016

“

Students are exceptionally well supported during their time at Mander Portman Woodward. Weekly meetings with personal mentors ensure that students' progress is checked and that all students have the opportunity to raise any matters of concern.

”

—Ofsted Inspection Report
November 2016



The clear aim of the majority of our A level students is to proceed to a university degree course after leaving MPW. It is a key part of the personal tutor's role to provide the help and guidance necessary to make the most appropriate choices of course and institution.

Degree Applications

For students in the lower sixth the process of applying to university begins in the Autumn and Spring terms with sessions to prepare them for choosing courses and writing personal statements. For those joining us in the upper-sixth year or retaking A levels, discussions about university entrance and application procedures begin in earnest during the initial student interview.

We have particular experience of the difficulties faced by students who are applying for some of the more competitive courses such as Medicine, Veterinary Science and Law. We liaise with admissions tutors both before and after the publication of exam results and we have developed strong links with many of the departments attended by MPW students in the past. All students who are called for interview, particularly at Oxbridge, are encouraged to make use of interview practice at MPW.

For students applying to Cambridge University, where offers may be dependent on grades in STEP, we offer tuition aimed specifically at those papers. The college also offers specialist preparation for UKCAT, BMAT, LNAT and other university entrance tests.

Activities Programme

For many of our two-year A level students, sporting and other extra-curricular activities play a vital role in promoting a balanced lifestyle. Students in the lower sixth participate in weekly activities relating to sport, drama, science and wellbeing. Such activities are designed to be constantly adapting to new student input, UCAS-friendly and fun. Their purpose is to stimulate new interests and prepare students for the role that extra-curricular activities play at university. Further activities also take place which are non-compulsory and open to all students. These include a range of sports, several charity fund-raising events, a Student Council, an International Evening and a Summer Ball.

MPW Guides

Our experience of university admissions has led to the publication of a series of MPW Guides on Higher Education. These guides cover general entrance procedures, admission to Oxford and Cambridge and admission to degree courses such as Medicine, Dentistry, Physiotherapy, Veterinary Science, Pharmacy and Pharmacology, Engineering, Business and Economics, Psychology, Law and Art School.

MPW Guides and our Oxbridge mock interview service are used not only by our own students but also by pupils from a wide variety of other schools.

“

Good quality careers guidance enables students to make the right choice when considering higher education opportunities. The overwhelming majority of students apply to continue their studies at well-regarded universities, including Oxford and Cambridge.

”

—Ofsted Inspection Report November 2016

We offer A levels in a wide range of subjects with no timetable restrictions on combinations of subjects or courses of different lengths.

Two-Year A level Courses

The number of students choosing to study two-year A level courses has increased markedly in recent years. These courses are designed for students who are continuing at MPW after GCSE or for students from other schools who are seeking a change of environment after the fifth form.

An increasing number of students also join MPW at the end of Year 12 either to complete the studies that they have started at their previous schools or to change direction with a new approach or a new set of subjects.

In response to the new curriculum we aim to ensure that all Year 12 students follow a broad and balanced curriculum whilst maintaining flexibility of choice. In line with many schools in the independent sector, we

are continuing with a 4/3 model for the majority of our students, i.e. students will study four subjects in their first year and pursue three into the second year. In addition, the EPQ (Extended Project Qualification) is offered as a voluntary add-on to all students engaged on two-year programmes. We provide four and a half hours per week of tuition for each A level subject in the first year and six hours per subject per week in the second year.

One-Year A level Courses

These self-contained courses cover the complete syllabus in one year and are run entirely separately from the second year of our two-year programme. One-year courses are designed for students with previous experience of A level work and include the option of students taking up a new subject that may not

“

The sixth form is outstanding. Students make excellent progress and are very well prepared for the next stage of their educational career.

”

—Ofsted Inspection Report
November 2016



have been available at school, often allowing them to rethink their UCAS options in a fresh and constructive manner. One-year courses provide a minimum of eight hours of tuition per subject per week.

Retake A level Courses

With examinations now available only in June, we offer a wide variety of course durations and start dates for retake students at A level. Depending on previous grade, the subject and board combination, syllabus (Legacy or Reformed) and the number of papers to be retaken, students choose from three main options:

Our September to June (full-year study) course suits those students who require thorough revision of several papers, often over more than one subject.

Our January to June short retake course suits those who have narrowly missed their target grade, who perhaps have gap-year activities such as work experience or travel plans

during the Autumn term and whose new UCAS application does not need to reference the academic progress made during a retake course.

Our September to June (split-year study) course is a short retake course option which allows students to start courses in September so that they can begin to improve their knowledge and understanding at the earliest opportunity whilst receiving full UCAS support from MPW in the Autumn term. Students may undertake gap-year activities midway through the academic year before returning for intensive refresher revision later in the academic year.

It is essential to discuss the various short retake options carefully at interview. Split-year study, in particular, is a highly flexible option that has different course durations and fee structures depending on the subjects that are being retaken and their coursework requirements.



Our one-year GCSE courses allow those who wish to transfer to MPW at the end of Years 9 or 10 to do so with the minimum of disruption. Our small group sizes ensure that we are able to monitor each student's progress very carefully and provide individual help and attention where needed.

GCSE Curriculum Delivery

Students studying GCSEs follow one-year courses. These courses are ideal for students who are seeking to transfer to MPW at the end of Year 10. They also suit students who need to repeat Year 11, whether across the entire range of subjects or in just a few key subjects that have caused difficulties at school.

When students transfer to us at the end of Year 9, needing to spend a further two academic years studying at GCSE level, they follow one-year courses in four or five subjects in Year 10 before embarking on one-year courses in four or more different subjects in Year 11. This route gives students an exam focus throughout their studies and relieves them of the burden of having to study eight or more subjects at any one time.

GCSE students register at 8.45 am each morning. Wherever possible, GCSE lessons are timetabled between the hours of 9.00 am and 4.00 pm. GCSE students are also expected to sign in at the beginning of each morning and afternoon session and to work under supervision in the Andrew Lewin Study Centre when they are not in lessons.

Our one-year GCSE courses provide a good grounding for students planning to carry on to A level or vocational studies. They are highly structured and exam focused but they also allow students to discover and pursue areas of interest and develop valuable study skills. The minimum hours for all one-year GCSE courses are three hours per subject per week.

Residential Course

All GCSE students studying a core curriculum of five or more subjects are required to participate in a residential course. This takes place in the Autumn term and is an ideal opportunity to promote friendships amongst the new GCSE intake. It also adds depth to their GCSE subjects.

Activities on the residential course run throughout the day and into the early evening and are designed to be interactive and fun with clear learning and developmental objectives. Students develop personal skills such as communication, confidence, leadership, teamwork, problem-solving and self-esteem. In addition, the residential course allows areas of the Personal, Social, Health and Economic Education (PSHE) curriculum to be covered in depth in a new learning environment that stimulates group discussion.

Life Skills and Sport

Students of compulsory school age or those studying a core curriculum of five or more subjects are required to attend classes in Life Skills and Sport. Our Life Skills programme covers the curricula for PSHE and Citizenship. It teaches students study skills, prepares them for sixth-form study or the world of work and emphasises the importance of maintaining a safe and healthy lifestyle. Our Sports programme has been substantially enriched in recent years and includes football, badminton, swimming, martial arts, basketball, yoga and tennis.

“

The college provides a safe and secure environment in which pupils flourish.

”

—Ofsted Inspection Report
November 2016

“

Teachers' assessment of pupils' work is rigorous and ensures that any gaps in their knowledge are quickly identified and addressed.

”

—Ofsted Inspection Report November 2016



Each year the college awards prizes to students in recognition of their academic achievements. Last year's prize winners include:

CHARLOTTE TAYLOR won the prize for outstanding overall achievement. Charlotte joined MPW from Hills Road Sixth Form College after her first year in the sixth form and restarted a two-year A level course. Achieving grades A*A*A in Biology, Geography and Mathematics, Charlotte won a place to read Civil Engineering with Architecture at the University of Glasgow.

EDMUND CRAWLEY won the prize for the best performance by an A level retake student. Edmund joined MPW from St John's Marlborough where he had achieved grades BCC in English Literature, History and Religious Studies. After following a January-June retake course,

Edmund achieved grades A*A*A and won a place to read Philosophy of Religion and Theology at Girton College, Cambridge.

ALLASTER JOHNSTON and **YOUNG SEOK KIM** shared the Andrew Lewin Memorial Prize for the best performance by a lower-sixth student. Allaster joined MPW from Haileybury. At the end of his lower-sixth year at MPW he achieved AS level grades AAAA in Chemistry, Mathematics, Further Mathematics and Physics. He has gone on to study A levels in Mathematics, Further Mathematics and Physics and has applied to read Mechanical Engineering at university. Young Seok joined



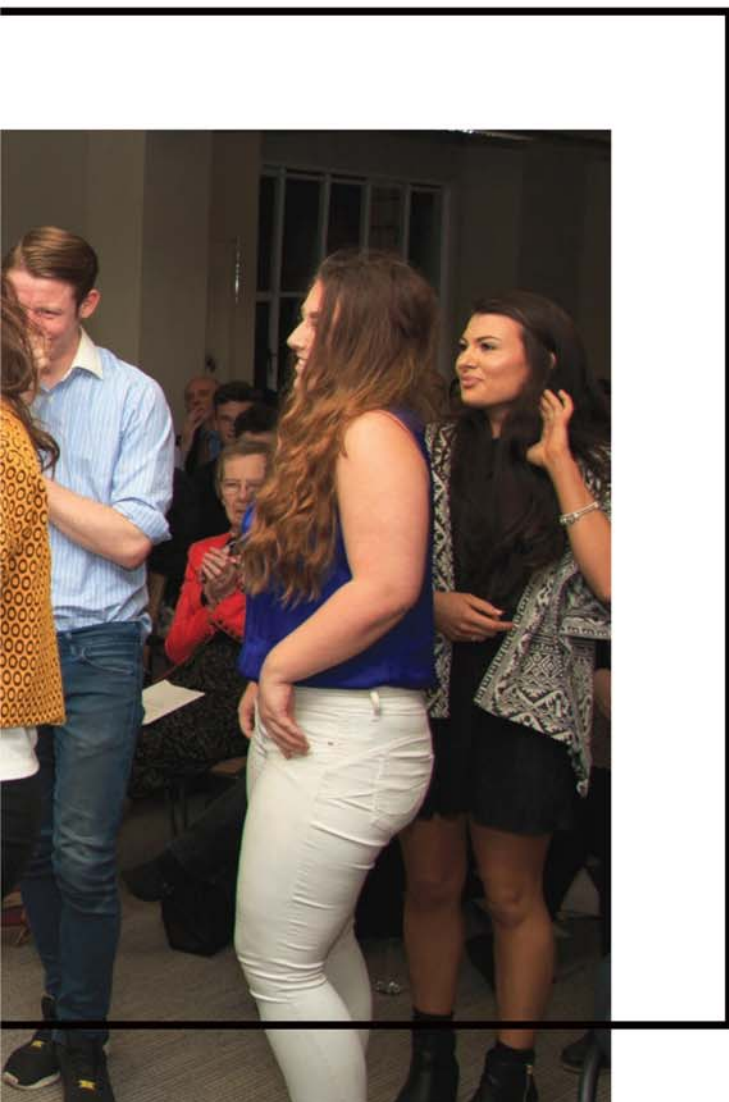
MPW from North London Collegiate School in Korea. At the end of his lower-sixth year at MPW he achieved AS level grades AAAA in Biology, Chemistry, Mathematics and Further Mathematics. He has gone on to study A levels in Biology, Chemistry and Mathematics and has applied to read Dentistry at university.

KRIZTEE FU and **NICHOLAS TAN** shared the prize for the best performance by an upper-sixth student. Kriztee joined MPW from Xceleration Education in Malaysia to follow an 18-month A level course. Achieving grades A*AA in Economics, Government and Politics and Mathematics, Kriztee won a place to read Accounting and Finance at the University of Warwick. Nicholas joined MPW from Sekolah Sri Campaka School in Malaysia to follow a two-year A level course in Mathematics, Chemistry and Physics. He achieved grades A*AA before taking a gap year in Australia.

BRANDON PAPINEAU and **CHUN HIN CHOW** shared the prize for the best performance by a student studying A levels in one year. Brandon joined MPW from Del Norte High School in San Diego to complete a one-year A level course in Spanish, Classical Civilisation and English Language. Achieving grades A*AA, Brandon won a place to read Linguistics at the University of Edinburgh. Chun Hin joined MPW from St Francis Xavier's College in Hong Kong to complete a one-year A level course in Economics, Chinese, Mathematics and Philosophy. Achieving grades A*AAA, he won a place to read Law at Wolfson College, Cambridge.

RONGLONG KE won the Helen Lee Memorial Prize for the best performance by a student studying A levels over two years. Ronglong joined MPW from Shantou Chaoyang Experimental School in China to complete a two-year A level course in Mathematics, Further Mathematics and Physics. Achieving grades A*A*A, Ronglong won a place to read Computer Science at University College, London.

MICHAEL KOIZA won the prize for the best performance by a GCSE student. Michael joined MPW from King's Ely at the start of Year 11 to study eight GCSEs intensively over one year. Achieving two A*s, five As and one B, Michael progressed into the sixth form at MPW for his A levels.

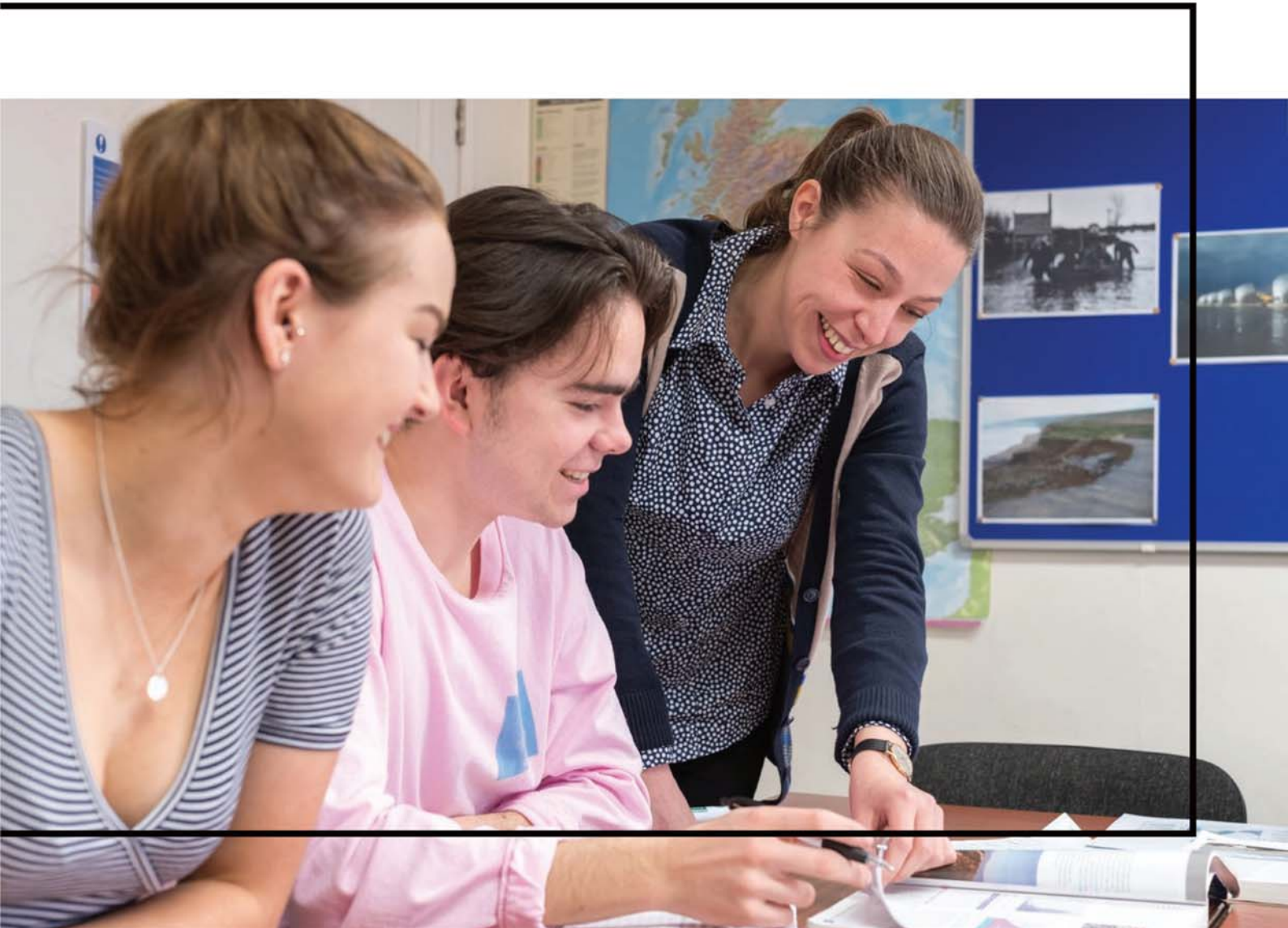


Subjects Taught at MPW

A and AS level

Accounting	English Literature	Mathematics
Ancient History	Film Studies	Media Studies
Art	French	Philosophy
Biology	Further Mathematics	Photography
Business	Geography	Physics
Chemistry	German	Politics
Chinese	History	Psychology
Classical Civilisation	History of Art	Religious Studies
Computing	Italian	Russian
Economics	Latin	Sociology
English Language	Law	Spanish

Other subjects may be available on request.





GCSE

Ancient History	English Language	Italian
Art	English Literature	Mathematics
Biology	French	Physics
Business Studies	Geography	Psychology
Chemistry	German	Religious Studies
Computer Science	History	Spanish
Economics		

Other subjects may be available on request.

“

The behaviour of pupils is outstanding. Pupils take responsibility for their own behaviour and show excellent attitudes towards their teachers and their learning.

”

—Ofsted Inspection Report November 2016

Principal

MARKUS BERNHARDT read Physics and completed his Masters and PhD at the University of Bonn. He first joined MPW in 2009 and prior to his most recent appointment was Headmaster at Sherradswood School in Hertfordshire.

Deputy Principal

GRAHAM ALMOND obtained a first-class honours degree in Chemistry at Coventry University before completing a PhD and a PGCE at the University of Durham. He has taught Chemistry at MPW since 1997 and was appointed Deputy Principal in 2003.

Assistant Principal

JOEL RICKARD read Philosophy and completed a Masters and a PhD at the University of Kent, the latter after obtaining a PGCE at Canterbury Christ Church University. He has taught Philosophy and Politics at MPW since 2011.

Academic Director

TIM JOSEPH read Modern Languages at UCL and completed a Masters in Teaching at the Institute of Education. Before joining MPW he was Principal of Chelsea Independent College.

Directors of Studies

ELPIDA CHRISTIANAKI read English at Anglia Ruskin University before completing a Masters and a PhD at the University of Kent and then obtaining a PGCE at Canterbury Christ Church University. She has taught Classical Civilisation and English at MPW since 2011 and was appointed Director of Studies in 2014.

INGA MORRISSEY read Modern Foreign Languages and Psychology at Belarusian State University before completing a CELTA qualification and a Masters at Anglia Ruskin University. She has taught EAL and Russian at MPW since joining the college as Director of Studies in 2014.

DAVID SHAH obtained a first-class honours degree in History and completed a PhD at the University of Leeds. He first joined MPW as a Director of Studies in 2007 and teaches History and EAL.

KIERON TONER read Economics and completed a Masters in International Business Economics at Anglia Ruskin University. He has taught Economics at MPW since 2013.

CHRIS YOUNG obtained a first class honours degree in English Language and English Language Teaching at Anglia Ruskin University after completing a CELTA qualification at Cambridge Regional College. He has taught English at MPW since 2014.



Teaching Staff

MALCOLM ALLURED	BSc (Manchester), CertEd, Chemistry/Mathematics/Science
GRAHAM ALMOND	BSc (Coventry), PhD (Durham), PGCE, Chemistry
SEB ANTONIOU	BA (De Montfort), Art and Design
DAVID APPLIN	BSc (Leeds), MSc (London), PhD (London), Biology
SUSANNA ARKELL	MA (Oxon), PCGE, Mathematics
ROSA AUSTIN	LLB (East Anglia), Law
JOHN BARRATT	BSc (OU), BSc (Imperial), Mathematics
HELEN BARRS	MA (Nanjing), LLM (ARU), MPhil (London), PgDip (London), Chinese
PETER BIRD	MA (Cantab), PGCE, Mathematics
SIMON BROWNE	MA (Cantab), English/Film Studies/History of Art
ELPIDA CHRISTIANAKI	BA (ARU), MA (Kent), PhD (Kent), PGCE, Classical Civilisation/English
DAVID COATES	MA (Cantab), PGCE, Biology/Chemistry
JOHN COOTER	BSc (OU), MSc (London), Psychology
ANDREW CORRIE	MA (Oxon), PhD (London), DipCS (Cantab), Chemistry
YUSUF CSABAI	BSc (ARU), PGCE, Mathematics
ELAINE FARROW	MChem (UEA), PGCE, Chemistry/Physics
ANNA DI GIOVANNANTONIO	MA (Naples), Italian/Latin
RICHARD GLASS	BA (ARU), MA (OU), PGCE, Geography/Sociology
BRIGITTE GRIMSHAW	BA (London), PGCE, French
JACQUELINE HALE	FCA, Accounting
BRETT HUGHES	BA (Macquarie), MA (Sydney), CThM (Cantab), DipEd, Computing
IAN HUNT	LLB (Wales), PGCE, Accounting
ANA JIMENEZ	BA (ARU), MA (La Rioja), Spanish
TIM JOSEPH	BA (London), MA (London), EAL
MARIA MANRIQUE	MSc (Catalunya), MSc (Paris), PhD (London), Mathematics/Physics
TONY MARRIOTT	BA (Hull), MSc (Sheffield), PGCE, Economics/Politics
KATIE MAYNARD	BA (London), CertEd, History of Art
ROB MCILVEEN	BSc (Hull), PhD (Oxon), CertEd, Psychology
LORNA MORRIS	BA (Hallam), PGCE, English
INGA MORRISSEY	BA (Belarusian State), MA (ARU), CELTA, EAL/Russian
SUSAN MORTLOCK RAJASINGHE	BA (London), MA (London), English
AVI NAIM	BA (OU Israel), BA (Technion), MSc (Hebrew), PhD (Cantab), Mathematics/Physics
DAVID NEWCOMBE	BA (Vermont), MDiv, STM (General Theological Seminary, New York), PhD (Cantab), History
NICK PAPANIKOLAOU	MPhys (Sussex), MSc (Sussex), PGCE, Mathematics/Physics
JOHN PARRY	MA (Cantab), PhD (Cantab), PGCE, English
LISA POPE	BSc (Keele), PhD (Keele), Mathematics/Physics
JAYSHRI RAJPUT-WILLIAMS	BSc (London), PhD (London), PGCE, Biology
JAMIL RASHID	BA (London Met), MA (London Met), PGCE, Politics/Sociology
JOEL RICKARD	BA (Kent), MA (Kent), PhD (Kent), PGCE, Politics/Philosophy
CHARLIE RITCHIE	BA (Aberdeen), Media Studies
CHERYL SACTH	BSc (Cape Town), MSc (Cape Town), PhD (Cape Town), PGCE, Chemistry
MANDY SCHWARZ	BEEd (Dresden), MEd (Dresden), German
DAVID SHAH	BA (Leeds), PhD (Leeds), EAL/History
SARA SHAW	BA (Cantab), MA (ARU), PGCE, English
RIKA SMALMAN	BA (Pretoria), BA (Rand Afrikaans), PGCE, Mathematics
EMMA SMITH	BSc (Newcastle), PGCE, Geography
ANA SOBRINO	BA (Salamanca), BA (ARU), PGCE, Spanish
HILARY STREET	BA (Reading), Business Studies
VENREASE STURLONG	BSc (West Indies), Psychology
TOBY TAYLOR	BA (ARU), MA (London), CELTA, EAL/Philosophy
ADAM TOMLINSON	BA (Liverpool), PGCE, History
KIERON TONER	BA (ARU), MA (ARU), Economics
CHRIS WAITES	MA (Cantab), Mathematics
NICKY WHARTON	BA (Reading), PGCE, History
LAYLA WHITWORTH	MA (Cantab), MPhil (Cantab), Biology
DEAN WILLIAMS	BA (ARU), CELTA, EAL
JODY WILLIAMS	BA (Lincoln), PGCE, Psychology/Sociology
ANN WOOD	BA (Reading), CertEd, English
BRENDA WRIGHT	BA (OU), CertEd, Mathematics
CHRIS YOUNG	BA (ARU), CELTA, EAL/English
MUHAMMAD ZAMAN	BSc (Punjab), MSc (Punjab), PgDip (London Met), Maths/Physics

MPW runs a number of courses for students from other schools and colleges. These usually take place after school, on Saturday mornings or during school holidays.

Easter Revision

During the Easter holiday we offer GCSE, AS and A level revision courses for students studying at schools throughout the UK. These courses build understanding and confidence by providing intensive revision of core topics, daily examination practice and help with study and revision skills.

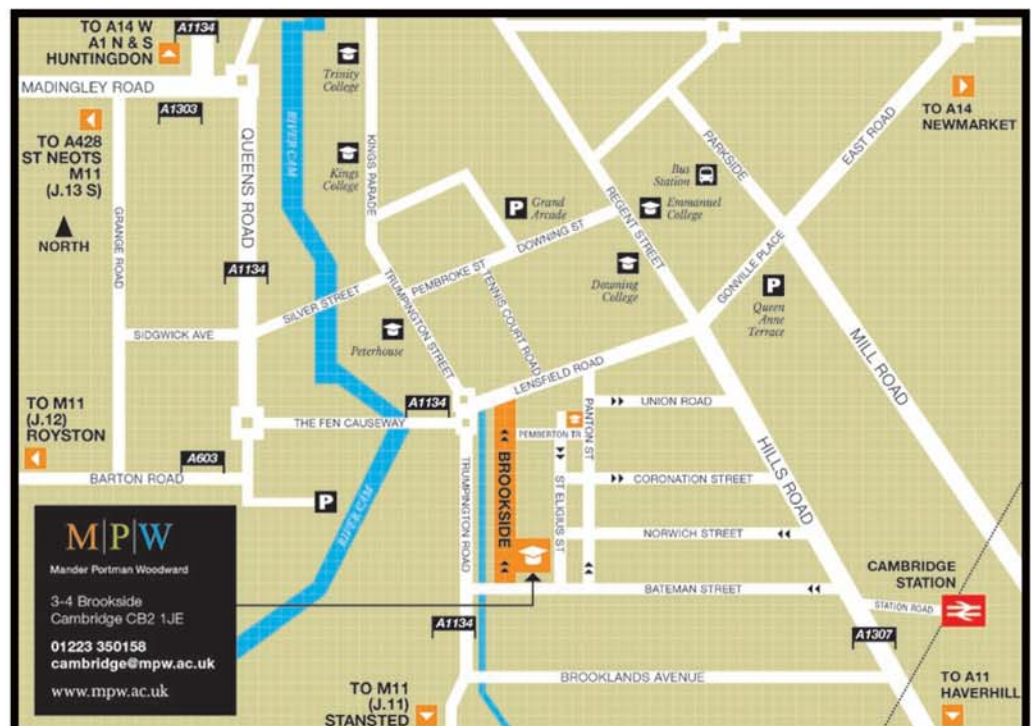
Our tutors are highly qualified graduates whose experience at MPW has trained them to be particularly adept at building students' confidence quickly and efficiently. Many are GCSE and A level examiners and are therefore attuned to the requirements and approaches of the various examination boards.

Our separate Easter Revision prospectus and Course Outlines booklet are available from the Easter Revision Course Director on request.

Support Tuition

We run a busy individual tuition programme for students already studying GCSE or A level courses at other schools. These one-to-one sessions are tailored to meet the individual needs of the student and take place on the college premises. Lessons may be arranged after school, on Saturday mornings or during half term, Christmas or summer holidays.

Cambridge is easily accessible by road, using the A1, A14 or M11. The college is situated off Trumpington Road, close to the Botanic Garden and opposite The Leys School. It is a short walk from either the train station or the bus station.



Nigel Stout MA DPhil *Chair of Governors*

Mander Portman Woodward Ltd 90-92 Queen's Gate, London SW7 5AB *Tel:* 020 7835 1355

www.mpw.ac.uk

The logo consists of three vertical bars of different colors (orange, green, blue) with the letters M, P, and W respectively, separated by thin white lines.

Mander Portman Woodward

CAMBRIDGE **01223 350158**

3-4 Brookside
Cambridge CB2 1JE

cambridge@mpw.ac.uk

LONDON **020 7835 1355**

90-92 Queen's Gate
London SW7 5AB

london@mpw.ac.uk

BIRMINGHAM **0121 454 9637**

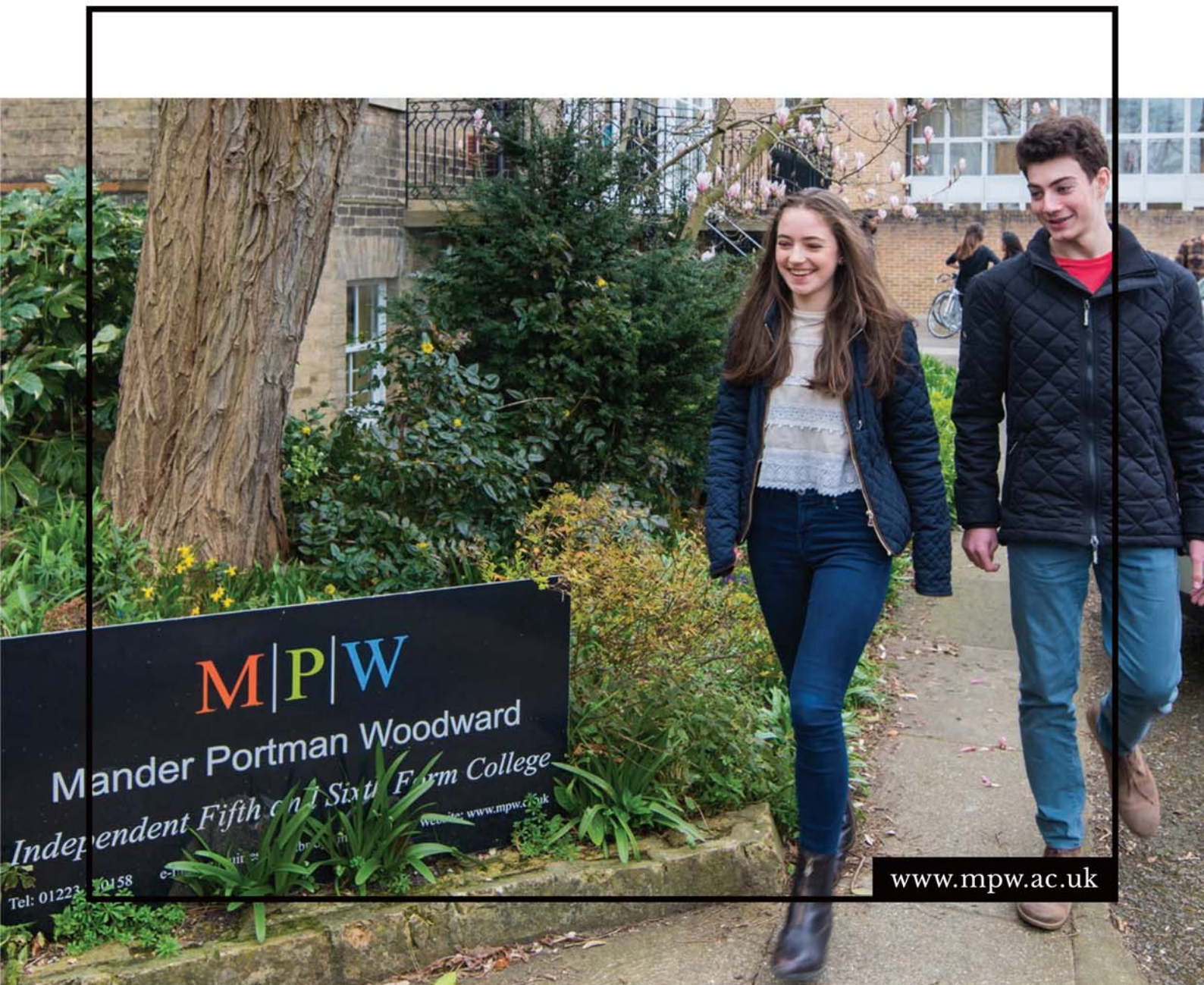
17-18 Greenfield Crescent
Birmingham B15 3AU

birmingham@mpw.ac.uk

www.mpw.ac.uk



Additional Information 2017/2018



www.mpw.ac.uk

Terms and Half Terms

Autumn Term

Monday 11 September – Friday 15 December
(Half term: 23 October – 27 October)

Spring Term

Thursday 4 January – Friday 23 March
(Half term: 12 February – 16 February)

Summer Term

Monday 16 April – Friday 15 June
(Half term: Bank Holidays 7 May and 28 May)

Short Courses

Study period 1

Monday 11 September – Friday 20 October

Study period 2

Monday 30 October – Friday 15 December

Study period 3

Monday 8 January – Friday 9 February

Study period 4

Monday 19 February – Friday 23 March

Study period 5

Monday 16 April – Friday 15 June

September-June (split-year study) courses

Route A

Study periods 1, 2, 5

Route B

Study periods 1, 4, 5

January-June courses

Study periods 3, 4, 5

Easter Revision Courses 2018

Week 1

Monday 26 March – Friday 30 March

Week 2

Monday 2 April – Friday 6 April

Week 3

Monday 9 April – Friday 13 April

A level Courses

Two-year courses

First year of two-year courses	per term £7,450
Second year of two-year courses	per term £7,450

One-year courses

For one subject	per term £3,520
For two subjects	per term £6,490
For three subjects	per term £9,075

Legacy retake courses

Full-year course	per unit £2,640
January-June course	per unit £1,810
Split-year course	per unit £1,810

Reformed retake courses

Full-year courses	
For one subject	per term £3,520
For two subjects	per term £6,490
For three subjects	per term £9,075
January-June course	per subject £5,430
Split-year course	per subject £5,430

GCSE Courses

One-year courses

For up to four GCSE subjects	per subject per term £1,510
Core curriculum (five or more GCSE subjects)	per term £7,190

Other Fees

Individual tuition	per hour £69
--------------------	--------------

English as an Additional Language (EAL)	per term £1,800
---	-----------------

Interview practice for Oxbridge and Medicine	per interview £200
--	--------------------

Field courses

Additional charges will be made in respect of such courses where appropriate.

Registration fee	£260
------------------	------

Included in the above fees are the core text books required for these courses. There are no extra fees except for the exam entry fees.

To provide an environment in which students enjoy working hard to achieve successful academic outcomes in terms of both results and educational progression.

Aims

Encourage students to work towards fulfilling their potential

Work with parents and guardians to encourage a strong student work ethic

Provide a broad and flexible curriculum that allows students to cultivate their specific academic interests and aptitudes

Assist students in achieving high academic success through a combination of small class sizes, high quality teaching and a clear focus on learning outcomes

Provide an excellent system of pastoral support that is geared towards individual needs and recognises the personal and emotional challenges faced by 14 to 19 year olds

Guide students to make informed choices about educational progression in such a way as to maximise their chances of securing places on competitive and prestigious courses

Provide a friendly and informal environment in which students are encouraged to develop personal discipline and values, lead fulfilled lives and make a positive contribution to society