



**TreeHouse  
School**

# TreeHouse School Governor

Recruitment Pack



**Ambitious  
about Autism**

# Contents

<b>Contents.....</b>	<b>1</b>
<b>Welcome letter.....</b>	<b>2</b>
<b>Job description .....</b>	<b>3</b>
<b>Governance Structure.....</b>	<b>5</b>
<b>Person specification .....</b>	<b>7</b>
<b>How to apply .....</b>	<b>8</b>

If you, or someone you know would like this publication in an email, in Braille, large print, Easy Read transcription or audio tape, please email [jobs@ambitiousaboutautism.org.uk](mailto:jobs@ambitiousaboutautism.org.uk).

# Welcome from the Chair of the Governing Body and Head of School

Thank you for your interest in becoming a Governor of TreeHouse School. TreeHouse School is an Ofsted-rated outstanding non-maintained special school for autistic children and young people aged 4 to 19 years. The school was founded in 1997 by a group of parents of autistic children, and for this reason parents are a vital part of the school.

We are proud of the school's achievements striving to empower our pupils to make even more progress and to gain the skills and confidence to transition to an active and rewarding adult life as part of their community. It is a happy and inspiring school where pupils learn, thrive, achieve and belong.

Our children are supported by a trans-disciplinary team to access a personalised curriculum that improves their quality of life, helps them achieve individual goals and meets our vision to make the ordinary possible. Our children and young people's progress is robustly evaluated and scrutinised by the Governing Body and we work in partnership with academic bodies and partners to develop and share our model and practice.

Our work is driven by our Ambitious Approach which you can read more about later in this pack. It focuses on quality of life and underpinning it is the belief that:

- Every pupil has worth and value. Nothing they do or say changes this;
- Every pupil has their own preferences, beliefs, thoughts and feelings and they have a right to have these recognised and supported.

Governance is key in supporting and challenging the school to achieve the best it can and ensure outstanding progress for its pupils. We are seeking new governors with shared values, skills and commitment to serve on the Governing Body.

This is an exciting opportunity to be at the heart of decision making at TreeHouse School, and become a part of a great team.



Joanna Dziopa  
Head of School



Martyn Craddock  
Chair of Governing Body

# Job description

<b>Job title</b>	<b>Governor</b>	<b>Team</b>	<b>TreeHouse School</b>
<b>Job band</b>	<b>Volunteer</b>	<b>Reporting to</b>	<b>Chair of Governing Body</b>
<b>Hours</b>	Minimum commitment over the academic year includes <ul style="list-style-type: none"> <li>• Termly Governing Body (GB) meetings</li> <li>• Annual GB strategic meeting</li> <li>• Termly Twilight governors training</li> </ul>	<b>Line manages</b>	<b>N/A</b>

**Approved by: Chair of Governors**

**Updated: September 2023**

## Role purpose

Ambitious about Autism is a charity that runs and supports the development of educational settings to enable children and young people with autism to learn, thrive and achieve. TreeHouse School is a non-maintained special school set up in 1997 by Ambitious about Autism. TreeHouse School Governing Body is established as a sub-committee of the Board of Trustees and is responsible for supporting the Board of Trustees in ensuring effective oversight of service by:

- Determining the aims and priorities of the school;
- Setting targets (statutory and where appropriate);
- Monitoring and evaluating the work of the school;
- Securing high levels of attendance;
- Ensuring that all young people in the services have access to a broad and balanced curriculum which is suitable to age, aptitude and ability, which prepares them for adult life;
- Ensuring the health and safety of young people and staff in the service.

TreeHouse School Governing Body consists of individuals who have the skills, competencies and perspectives needed to govern.

We are seeking a Governor to help us achieve real change for autistic children and young people and their families.

All Governors are expected to play their part in contributing to the overall work of the Governing Body. In accordance with the responsibilities of the Governing Body explained above, our main aim is to support the services in raising standards for all.

This involves:

- Providing a strategic view for the service;
- Acting as a sounding board and critical friend;
- Ensuring accountability.

In order to meet these responsibilities in an efficient and effective manner, the Governing Body will work with the leaders within the school, which is the reason it is vital people from the community, parents and staff are represented within the Governing Body.

In addition, this reduces the focus on individual Governor responsibilities while allowing a more strategic overview and evaluation of school performance at the full Governing Body. We are looking for a candidate who has experience in either safeguarding or SEND educational provision, but we would like to encourage candidates to apply if they would like to be part of the TreeHouse team and think they are suited.

You can find out more by visiting the website:

TreeHouse School <https://treehouseschool.org.uk/>

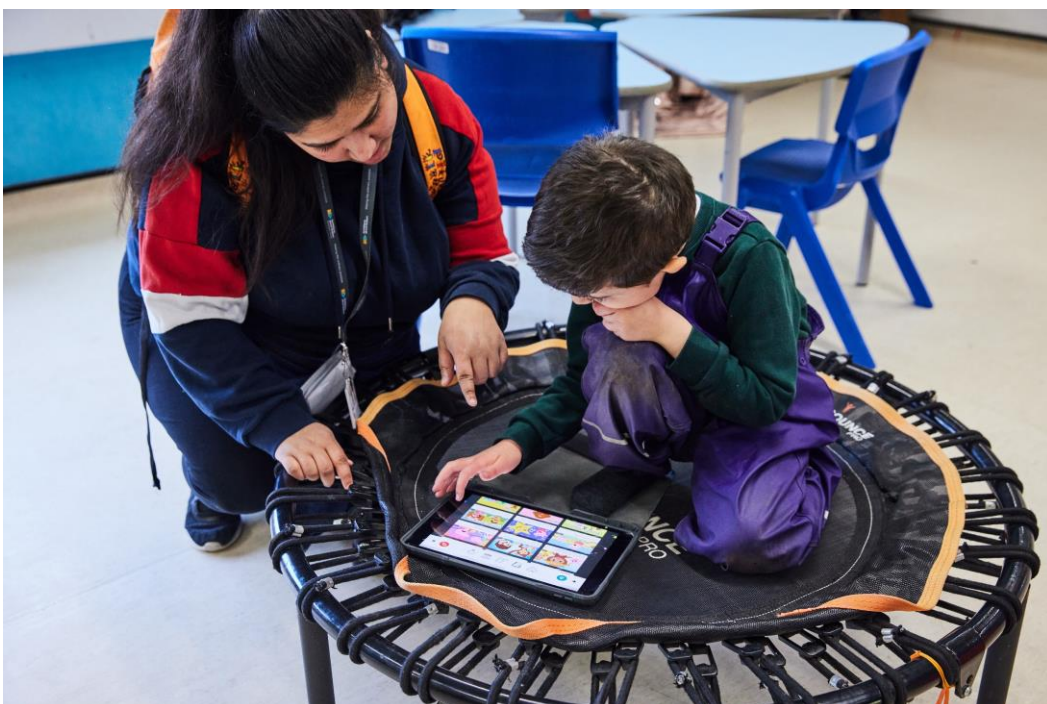
TreeHouse School Governing Body <https://treehouseschool.org.uk/our-school/key-people/governance>

### **Key accountabilities and dimensions**

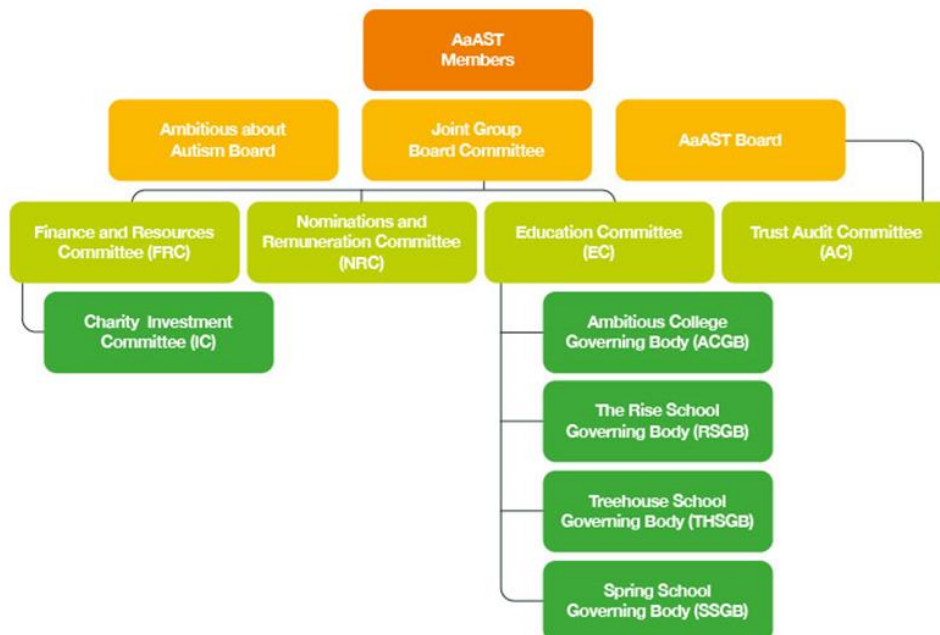
Each individual Governor has a responsibility, working alongside other members of the Governing Body, to pupils, staff of the school and the wider community.

Although some Governors may have a particular perspective and experience (e.g. parent/carers or community), they are not delegates of that group and act in the interest of the school.

The key responsibilities of the role are outlined in the section above and annually the Governing Body will assess its performance and make recommendations as appropriate.



# Governance Structure



## TreeHouse School Governing Body

Each setting has a Governing Body comprising a range of people with the knowledge, skills and experience needed to support effective governance, including parents/carers. The Governors meet regularly and visit the settings to review and monitor their performance. Information on progress and outcomes is made available at annual reviews, to parents/carers and Local Authorities, and reported termly to the Governing Bodies. We also have a board-level Education Committee that oversees performance across all of our settings.

Our settings are subject to Ofsted inspections, which are published online, both on our website and by Ofsted.

Good governance is key to the success of TreeHouse School. We are proud to have such a committed Governing Body. Our Governor's drive for quality is reflective of that of our staff.

The overall purpose of the Governing Body is to:

- Ensure pupils/learners achieve excellent progress, attainment and outcomes;
- Promote the health, welfare and safety of pupils/learners;
- Ensure the School complies with relevant legislation and guidance;
- Ensure development of the School and its overall effectiveness;
- Ensure high standards of professional practice;
- Ensure compliance with Joint Group Board Committee (JGBC) and/or

- Charity/Trust policies as required;
- Support and hold the Head of the School to account;
  - Ensuring the School's work is, where possible, evidence based;
  - Maximise the reach and impact for the benefit of children and young people with autism and their families
  - Deliver high levels of satisfaction to pupils/learners, their families and other stakeholders;
  - Maintain and enhance the reputation of the School, the Charity and the Trust;
  - Ensure appropriate appointments to the Governing Body and high standards of governance.



# Person specification

## Role and band competencies

### Specific knowledge, experience and technical skills

1. Ability to participate actively in group decision making.
2. Willingness to represent the organisation and services internally and externally.
3. Ability to attend late afternoon meetings each term, one full day meeting and a termly twilight training session.
4. Ability to commit to at least one termly visit to the school to monitor the provision
5. Ambitious about Autism is committed to safeguarding and promoting the welfare of children and young people and expects all staff and volunteers to share this commitment
6. Experience of either safeguarding or SEND educational provision.

### Personal attributes

1. Willingness and ability to learn about education and / or children's environment, policy and law
2. Be values driven, able to identify with the five values of the charity and be inclusive and ambitious
3. Good understanding of autism or willingness to learn
4. Good appreciation of health and safety in the workplace, data protection principles and equal opportunities.

# How to apply

Stage	Timescale
Closing date for applications	<b>06/11/2023</b>
Candidates informed of outcome of application	<b>08/11/2023</b>

To apply for the position of Governor please send a letter or email, including your reasons and motivations for applying for this role to **Poppy Lindsley** at [plindsley@ambitiousaboutautism.org.uk](mailto:plindsley@ambitiousaboutautism.org.uk)

If you would like to find out more about this exciting opportunity, need any further information or wish to have an informal discussion please contact the Governance and Compliance Manager, **Poppy Lindsley**, [plindsley@ambitiousaboutautism.org.uk](mailto:plindsley@ambitiousaboutautism.org.uk) or the Governing Body Clerk, **Jennifer Clairmonte**, [jclairmonte@ambitiousaboutautism.org.uk](mailto:jclairmonte@ambitiousaboutautism.org.uk)

## Equal opportunities monitoring

*Ambitious about Autism is fully committed to equality of opportunity and diversity and we warmly welcome applications from all suitably qualified candidates. We welcome applications regardless of race, colour, nationality, ethnic or national origins, religion or belief, sex, sexual orientation, gender reassignment, marital or civil partner status, pregnancy or maternity, disability, or age. All applications will be considered solely on merit.*

*Ambitious about Autism is committed to safeguarding and promoting the welfare of children and young people and successful candidates will be subject to an Enhanced DBS check.*



**Ambitious about Autism** is the national charity standing with autistic children and young people.

We believe every autistic child and young person has the right to be themselves and realise their ambitions. We started as one school and have become a movement for change. We champion rights, campaign for change and create opportunities.

## Contact us

### TreeHouse School

The Pears National Centre for Autism Education  
Woodside Avenue, London N10 3JA

☎ 020 8815 5424 📠 020 8815 5420

✉ [admissions@ambitiousaboutautism.org.uk](mailto:admissions@ambitiousaboutautism.org.uk)

🌐 [treehouseschool.org.uk](http://treehouseschool.org.uk)

## Follow us

🐦 [@ambitiousautism](https://twitter.com/ambitiousautism)

📘 [ambitiousaboutautism](https://www.facebook.com/ambitiousaboutautism)

📷 [ambitiousaboutautism](https://www.instagram.com/ambitiousaboutautism)



Ambitious about Autism is a registered charity in England and Wales: 1063184 and a registered company: 3375255.

## How to find us

### Public transport

We're a short walk or bus ride away from Highgate and East Finchley Tube stations. Both are on the High Barnet branch of the Northern line. Bus routes 43 and 134 run nearby from Highgate Tube and routes 102 and 234 from East Finchley Tube.

### Travelling by car

Parking is available on our premises if there is space available. Cars should be parked in designated spaces only.

