



**ST. CATHERINE'S
BRITISH SCHOOL**

Athens, Greece

ST. CATHERINE'S BRITISH SCHOOL

Head of Seniors

Candidate Brief



Welcome from the Principal,

Jon Perriss

Dear Candidate,

Thank you for taking the time to consider this important pastoral position in the Upper School. St. Catherine's British School is one of only two HMC schools in Greece and is an executive member of COBIS.

We are a large school with top quality facilities, bright and aspirational students, talented staff, fantastic parents and alumni. We are also a community that is warm, welcoming and engaging, with our values of Care, Dedication, Curiosity and Integrity embedded throughout.

We offer an excellent package to staff, from generous fee remission for staff children, to assistance programmes, private medical insurance for the whole family and well supported CPD. Greece is also a beautiful and wonderful place to live!

This is a new post as we want to strengthen our pastoral support for our fantastic students. It is a "Head of Sixth Form" post in UK parlance, and the figurehead for the final two years of school. We want them to enjoy their final two years as well as prepare for the future.

This is a dynamic and exciting time to be at St. Catherine's, and I look forward to hearing from you.





About St. Catherine's British School

About Us

St. Catherine's British School has approximately 1,400 students aged 3 to 18, situated in both Lykovrissi and Kifissia, just a short ride from the historic centre of Athens.

The School has a workforce of around 350 Teaching and Support Staff. As one of the few British Schools Overseas (BSO) accredited schools in Greece, we uphold the highest international standards; we are proud of our British Heritage, proud of our international outlook and proud of our Greek home.

We are an IBO World School, teaching the EYFS curriculum, IGCSEs, and the International Baccalaureate (IB) Diploma Programme.

Our Values

Care | Dedication | Integrity | Curiosity

We are a values driven community ensuring that all initiatives and decisions align with who we are as a school.

Our Purpose

Working in partnership with families, we empower young people to understand, care, and create a better future, delivering a high-quality British education that equips students for global success.

The school is an ambitious, high-quality environment, as well as being a warm and inclusive community. Our modern facilities, including an impressive new Upper School campus, offer inspiring spaces that enhance the learning experience.

Our public exam results are outstanding, and we also place great importance on student and staff wellbeing, outdoor experiences (the Duke of Edinburgh International Award), sports, music and the performing arts.

The parents are supportive and engaged and we are fortunate to have an impressive board of governors to support and guide us.





IB & GCSE RESULTS

St Catherine's has been ranked 4th in Europe and 54th globally in the 2025 Top IB Schools published by Education Advisers on IB-schools.com. This confirms our position as the highest-ranked IB school in Greece and places our school among the top-performing IB schools internationally.

In May 2025, **99%** of the cohort passed the Diploma with an **average grade of 37.3 points**, with 43% of the students securing 40 points or more. They secured places at Yale, Harvard, LSE, Columbia, Brown, UCL, UChicago, Georgetown, Kings College London, Upenn, Edinburgh, McGill, St Andrew's, Bocconi University, Durham, IE, London Guildhall School of Music and Drama, EHL Business School, Ecole Polytechnique, amongst others.

In 2025, **59% of the cohort achieved grades 9-7**, and we have with streamlined academic programmes throughout the school supported by innovative technology.





OUTDOOR EDUCATION

Outdoor education complements traditional academic learning by offering hands-on experiences that make learning more engaging and relevant. It involves activities that help students develop personal and social skills, environmental awareness, and a sense of adventure through outdoor experiences like hiking, camping, and team-building exercises. The goal is to engage students in real-world learning by fostering a connection with nature, enhancing physical activity, and encouraging problem-solving and critical thinking outside the classroom.

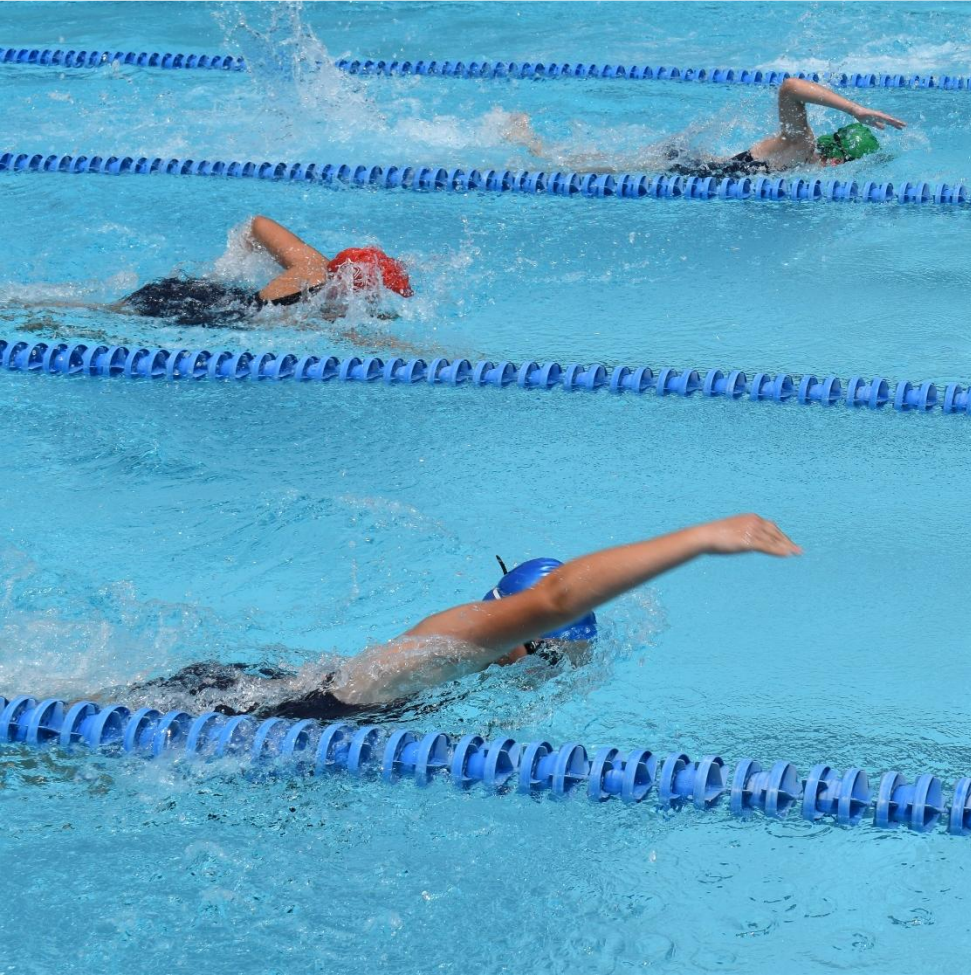
The Duke of Edinburgh's International Award

The Duke of Edinburgh's International Award, which has been running worldwide since 1956, is a prestigious and highly-prized, internationally-renowned programme which enables participants' development through a series of self-directed Skill, Physical Recreation and Voluntary Service activities and an overnight expedition.

Participants are required to engage in activities in each of these areas, pushing their limits and broadening their horizons. By completing these challenges, young people not only enhance their personal development but also gain a sense of achievement and self-confidence that lasts a lifetime.

Our students enjoy taking part and it's always exciting to see their personal development as they progress through the Bronze, Silver and Gold levels of the Award.

We also run a plethora of trips for all year groups, to local, national and international destinations, culminating in trips week towards the end of the summer term.



SPORTS

St. Catherine's British School is well-known for its robust sports program, emphasizing both participation and excellence in various athletic disciplines.

The school participates actively in a wide array of international competitions, including prestigious events like the World School games (held in Doha) and the Council of British International Schools (COBIS) games. The latter tournament gathers students from British schools across the globe, offering them the chance to compete in sports such as athletics, swimming, and football at renowned venues like the Olympic Stadium and Aquatic Centre in Athens. St. Catherine's often sends teams to these games, promoting sportsmanship, teamwork and excellence.

The school's sports curriculum also includes regular interschool matches and participation in local Greek competitions. These events cover multiple sports categories such as tennis, basketball, football, and volleyball, giving students numerous opportunities to compete at both junior and senior levels.

With excellent facilities and a commitment to holistic development, St. Catherine's fosters a strong culture of physical education, preparing students not only for local events but also for international sports tournaments.



MUSIC

St Catherine's British School boasts a vibrant and dynamic Music Department that provides students with a wide range of opportunities to develop their musical talents.

The school offers instrumental lessons in nearly any instrument of choice, and students can take part in graded music examinations. There is also the option to take part in speech and drama exams through the London Academy of Music and Dramatic Arts (LAMDA), adding a critical element of performance to their musical education.

Music is integrated into both the curriculum and co-curricular activities, giving students opportunities to perform in ensembles, orchestras, and school productions. Regular concerts, performances, and musical events take place, showcasing the students' talents in front of the school community.

The School emphasises not only musical excellence, but also personal growth through the arts, aligning with the school's broader mission to cultivate well-rounded global citizens. These offerings make St Catherine's a nurturing environment for students to explore and enhance their musical skills while enjoying a holistic educational experience.





DRAMA

St. Catherine's Upper School Theatre Department boasts **2 state-of-the-art Black boxes**, designed with all the necessary Theatrical equipment to be able to run successful weekly KS3 Drama lessons, GCSE Drama classes and IB Theatre as well. With regular use of our **impressive school theatre**, the Theatre Department also caters for the high numbers of students who love performing and working backstage. With **Drama Clubs** running most lunchtimes, we produce **two productions every year**, one KS3 play and one KS4/IB play. There is also a musical production each year.

Our plays vary in content and style; our recent productions include *Pride and Prejudice* and *The Crucible*. Our performances do not stop there, IB and GCSE students also regularly showcase their work in the Black Boxes, which are perfectly suitable for more intimate and modern performances.

St. Catherine's British School offers students the opportunity to participate in **LAMDA (London Academy of Music and Dramatic Art)** exams, a prestigious qualification in the arts, which enhances their confidence in performance, public speaking, and drama. These exams help develop communication and acting skills in students from a young age, encouraging both creativity and poise.

Throughout the school year, St. Catherine's students take part in numerous performances, including plays, musicals, and recitals, showcasing their talents. These events not only enrich the students' school experience but also allow them to connect with wider audiences, including parents and the local community. By nurturing their dramatic and musical abilities, the school fosters a strong appreciation for the arts, contributing to the students' holistic development.





Working at St. Catherines

“I joined St. Catherine's in 2014 and was immediately welcomed into a supportive, enthusiastic and creative community of professionals whom I am now lucky to call my friends. Over the years, I have often reflected on the importance of such a collaborative and inclusive work environment, which offers opportunities for growth and creative freedom, allowing teachers to do what we love. Ten years down the line, my son now also attends St. Catherine's and is thriving in Year 2. He absolutely loves his school, his teachers and his diverse friendship group.”

Andri, English Teacher, Upper School

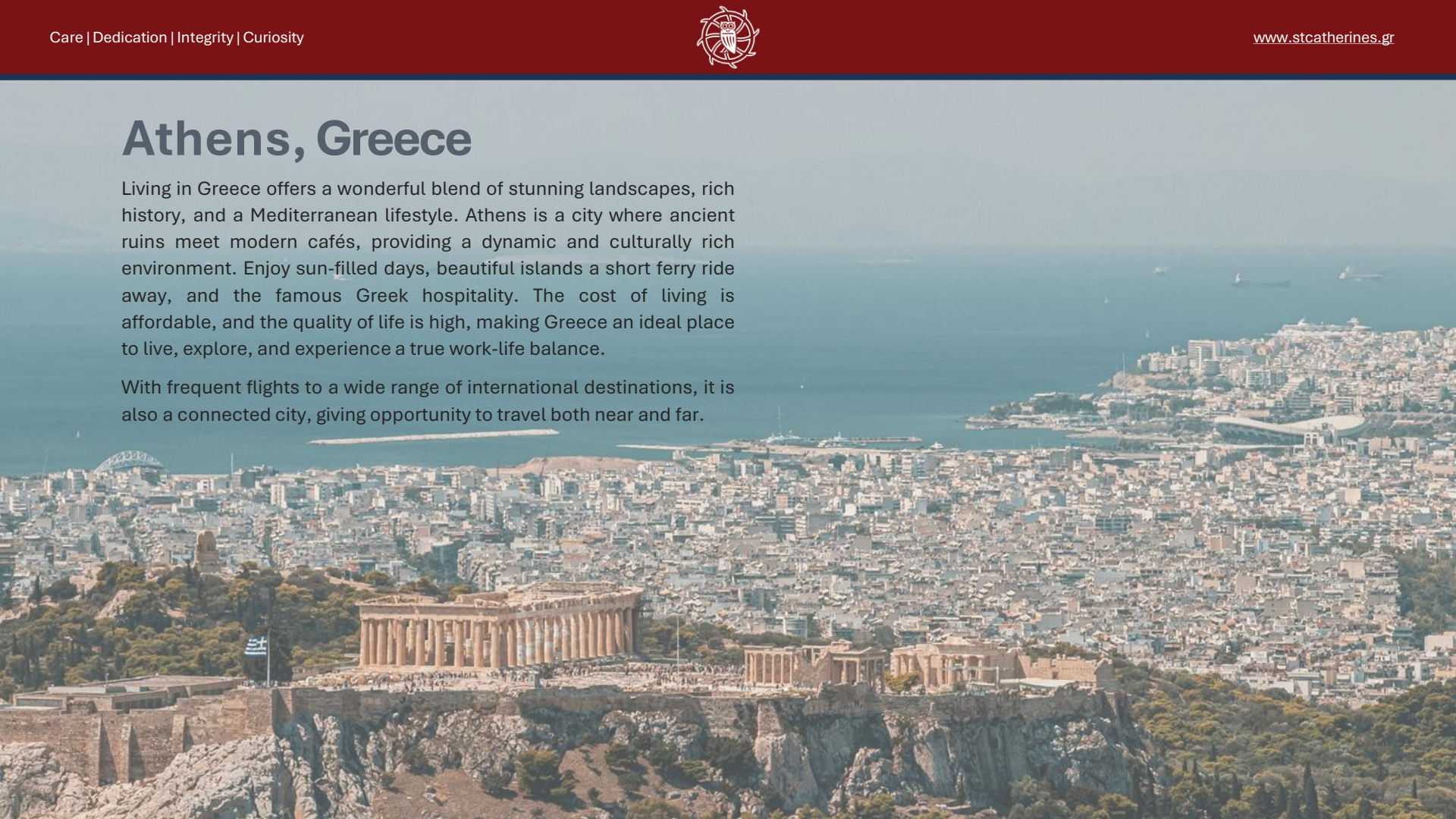


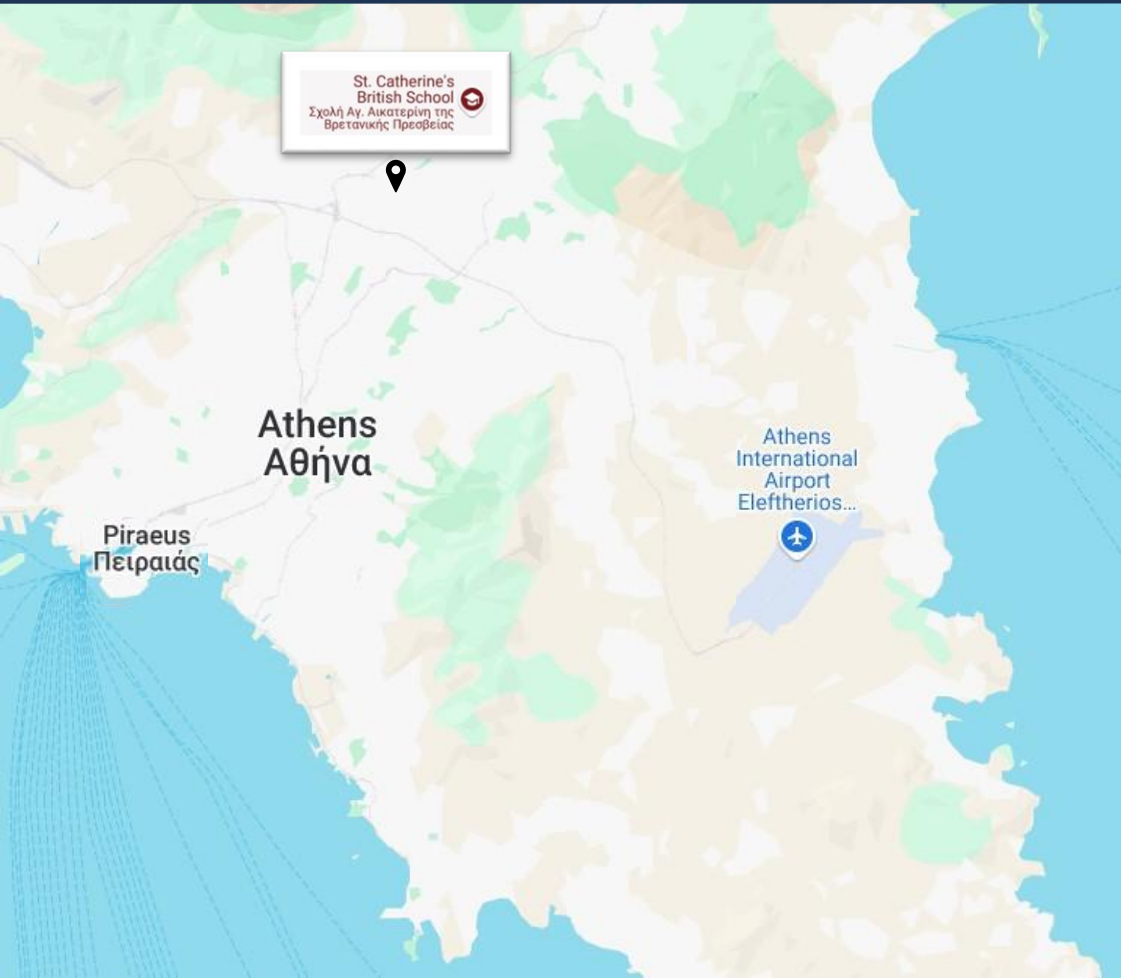


Athens, Greece

Living in Greece offers a wonderful blend of stunning landscapes, rich history, and a Mediterranean lifestyle. Athens is a city where ancient ruins meet modern cafés, providing a dynamic and culturally rich environment. Enjoy sun-filled days, beautiful islands a short ferry ride away, and the famous Greek hospitality. The cost of living is affordable, and the quality of life is high, making Greece an ideal place to live, explore, and experience a true work-life balance.

With frequent flights to a wide range of international destinations, it is also a connected city, giving opportunity to travel both near and far.





Getting to St. Catherine's British School

- **By car** – the school offers free parking
 - a) 35mins from the Airport
 - b) 40mins from the Centre of Athens (Acropolis)
 - c) 40mins from Piraeus
- **By train** – walking distance from Kifissia and Marousi stations
 - a) 60mins from the Airport
 - b) 55mins from Centre of Athens (Acropolis)
 - c) 55mins from Piraeus

St. Catherine's British School is located at the heart of a quiet residential area, while still being close to the bustling centre of Kifissia. There are a lot of green spaces around, shopping centres and food markets.

The centre of Athens is just a quick ride away, either by car or train. Public transport is very widely used, with a small monthly fee.

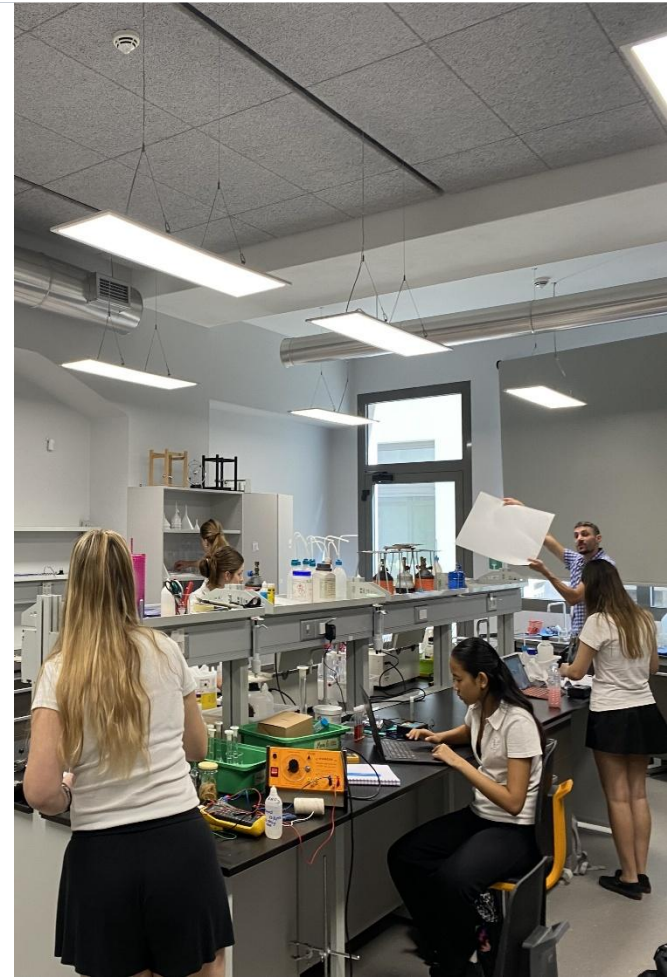


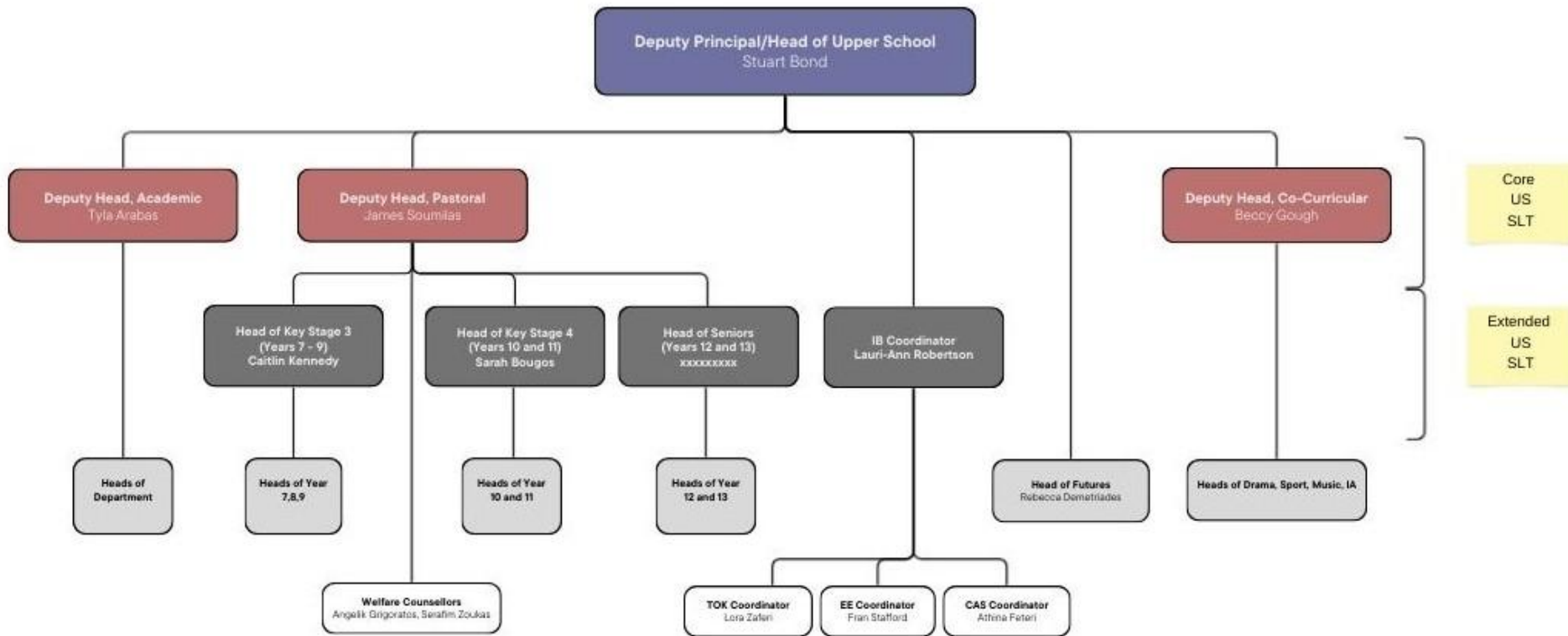
Job overview

As the Head of Seniors at St Catherine's British School, you will provide strategic leadership and serve as the figurehead for the final two years of the Upper School. You will ensure that every student in Years 12 and 13 feels a strong sense of belonging and is known, valued, and supported. Working as part of the Extended Upper School Senior Leadership Team, you will lead the pastoral provision across both year groups while line managing the Heads of Year and ensuring consistency in form periods, assemblies, and daily routines.

You will collaborate closely with academic, futures, IB, learning support, and co-curricular teams to create a balanced and enriching experience. This includes tracking student progress, coordinating wellbeing interventions, supporting behaviour management, strengthening transition points such as IB induction, and ensuring that students are well-prepared for life beyond school. As a Deputy Designated Safeguarding Lead (DDSL), you will play a key role in ensuring the safety, inclusion, and welfare of all students.

Student leadership is important, and you will ensure that the senior students lead house and school events, as well as overseeing the Senior Senate. You will organise all major milestones—from Year 12 onboarding to Year 13 graduation and leaving celebrations—ensuring these are meaningful, memorable, and aligned with St Catherine's values. Your leadership will help guide students through their final school years and support their successful transition into their next chapter, so they become engaged alumni.







Job Description

- Instil a strong and genuine sense of belonging so that every student feels, “This is my school; I belong, I am known, I am listened to, and I am valued.”
- Be line managed by the Deputy Head (Pastoral) and serve as a member of the Extended US Senior Leadership Team.
- Lead, oversee, and be accountable for the pastoral provision for students in Years 12 and 13.
- Act as a Deputy Designated Safeguarding Lead (DSL).
- Ensure coherence, collaboration and alignment across the two year groups by leading form periods, registrations, and assemblies throughout the academic year.
- Line manage the Heads of Year for Years 12 and 13, meeting with them frequently; oversee the Individual Staff Development Objective (ISDO) process and support the development and delivery of each year group’s development plan.
- Develop and maintain a robust and inclusive house programme (music, art, and sport), with student house leaders playing a central and active role.
- Serve as the next point of escalation for behaviour concerns following involvement from the Head of Year.
- Liaise closely with the Head of Key Stage 4 to ensure continuity and a smooth transition into Year 12, including IB induction arrangements.
- Collaborate with the Head of Futures to ensure a thoughtful and comprehensive futures programme.
- Work in partnership with the Deputy Head (Academic) to track academic progress and ensure timely interventions, noting that responsibility for exams, assessments, and reporting sits with the Deputy Head (Academic).



Job Description (cont.)

- Work alongside the Head of Learning Support to ensure appropriate and effective support is in place across Years 12 and 13.
- Collaborate with the Deputy Head (Co-Curricular) to ensure a broad, engaging programme of trips and activities that enrich and extend students' experiences.
- Work with the IB Coordinator to ensure a positive and purposeful academic environment.
- Ensure the Senior Senate is a purposeful and impactful body, placing student leadership at its core.
- Organise and oversee St Catherine's Graduation and Year 13 leaving events, including the graduation ceremony, leavers' dinner, and final day arrangements.
- Lead assemblies focused on relevant themes, while creating regular opportunities for celebration, recognition, and praise throughout the year
- Collaborate with the Head of Alumni Relations to connect current students to alumni and smoothly transition them into life as an engaged member of the alumni community.
- You will also be expected to teach a light timetable.



Person Specification

- Caring, pleasant, approachable, and effective communicator willing to serve people at all levels in the organisation and able to build strong working relationships.
- Commitment to the safeguarding of children.
- Flexibility, enthusiasm, and energy.
- Ability to work autonomously when required, and as part of a team.
- Pro-active, organised, excellent attention to detail.
- Excellent standard of written English and attention to accuracy, and appreciation of the influence of communication on stakeholders.
- Strong and secure personal commitment to the School's vision, mission and values, promoting with tireless energy the best possible outcomes for pupils.
- Ability to demonstrate sound judgement and decision-making skills.
- A sense of perspective and humour!



Candidate requirements

- Bachelor's degree in relevant field
- Experience working with children in an educational or pastoral setting
- Leadership of a school department/house/year
- Fluent in English or bilingual in Greek/English
- Excellent communication and interpersonal skills
- Effective management of time and ability to prioritise tasks
- Knowledge of safeguarding, mental health, and restorative practices

While the above includes a description of the essential functions of the position, other duties may be assigned by the Deputy Head Pastoral as appropriate.



St. Cat's Life & Benefits



100% Fee Remission
(for two children)



Discounted Lunches



Employee Assistance Programme (EAP)



Free Parking



Private Healthcare for your whole family



Private Pension



Professional Development



Relocation Support
(if applicable)



Sports Facilities



Prepaid Card for Groceries



Visa Support
(if applicable)



Work-Life Balance



© Whole staff photo Sept 2024



Application

Final round candidates will be invited to attend a formal interview and have a tour of the school. We reserve the right to call the candidates before the submission deadline. We therefore actively encourage early applications.

Closing date

Midday

Friday 23rd January 2026

Application Form

[Click here to download the application form](#)

St. Catherine's British School is committed to the welfare and safeguarding of children. The successful applicant will be required to apply for an International Child Protection Certificate if they are a non-local hire. Local hires are required to complete a Greek criminal record check.