



# Education without limits



Welcome to Eaton Square Senior School, a co-educational day school with an unparalleled location in central London.

---

On the path to greatness. This goal imbues all that we do at Eaton Square Senior and Sixth Form. Underpinned by a strong set of values (POISE – Perseverance, Ownership, Integrity, Service, Empathy), we empower and enable our students to achieve their optimal potential.

Our philosophy of education is based on a holistic, transformative, all-rounded approach focussing on character, curiosity, courage, leadership, social responsibility and resilience, in addition to academic achievement. Our students leave with the skills, knowledge and mindset to not only navigate the 21st Century, but to lead others and enact positive change.

We pride ourselves on our outstanding pastoral care, which is at the heart of each and every school day and is the golden thread that weaves all of our provision together. As the only independent school in Mayfair, we provide a warm, welcoming and supportive environment in the heart of our bustling capital. The size of our school ensures that each individual student feels valued and cared for. The positive relationships within the community mean that staff can help each student be their best self.

Students enjoy a vast range of academic and co-curricular opportunities, both during and after the school day. London is truly our classroom and we make the most of the many museums, galleries, theatres, sporting venues, historic buildings and Royal Parks we have on our doorstep.

It is a great honour to be the leader of this wonderfully vibrant and diverse community. I warmly welcome you to come and visit the school to see what makes us unique.

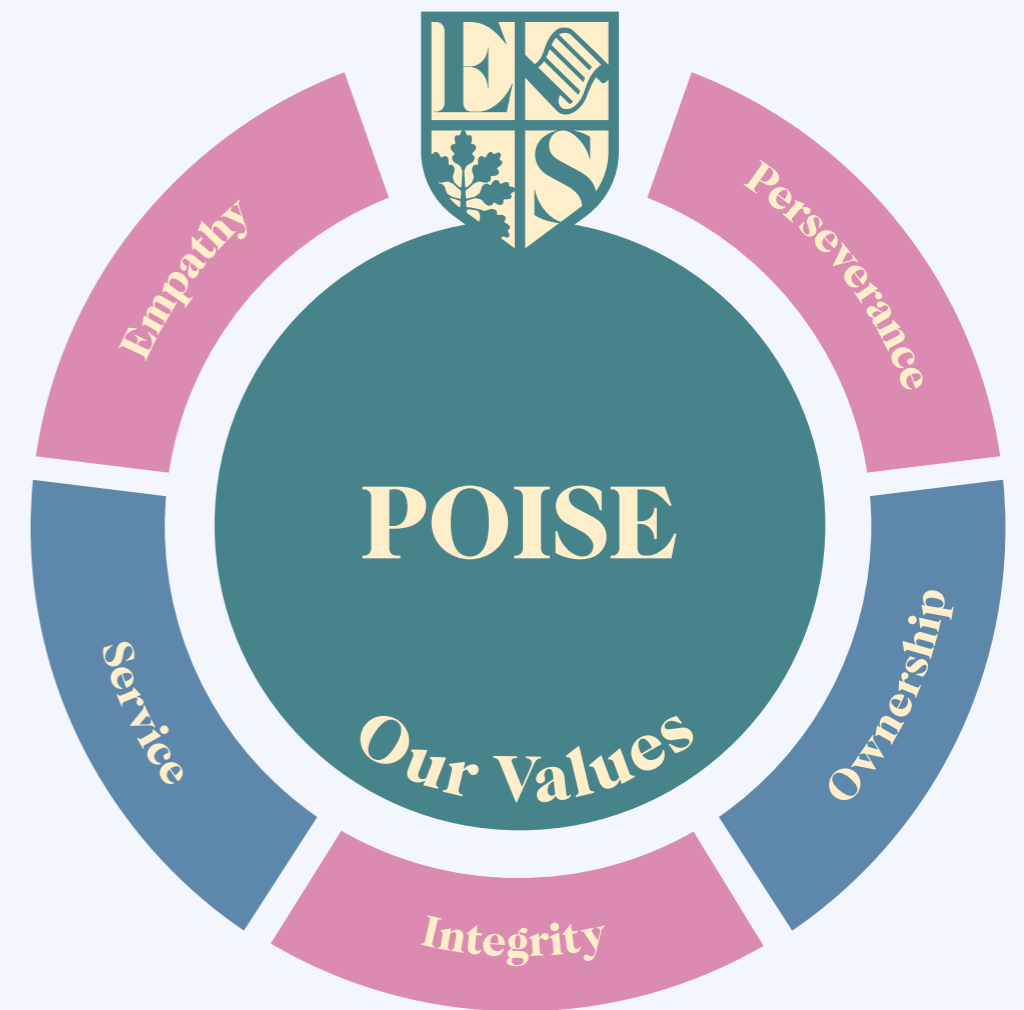
**Dr Adrian Rainbow**  
Head



At Eaton Square, we are driven by our five 'POISE' values.

We work closely with our students to help them realise these and other values that are important to them. Why? Values enable understanding of ourselves and our purpose. Once we know our values, our decisions (of which there are many in the teenage years) become simple.

From GCSE subjects to A Level next steps; extra-curricular activities to friendships, clear values enable our students to make the choices that are right for them.



**Instilling values**



We prioritise student wellbeing while supporting each individual to achieve their potential and beyond.

**1. Exceptional pastoral care that champions respect for self and others**

**2. A lifelong love of learning instilled by an intellectually curious community and strong academic framework**

**3. An abundance of opportunities to unlock and develop individual greatness in any sector**

**4. Bespoke co-curricular programs to cultivate tomorrow's leaders**

**What makes us different?**



At Eaton Square, we believe in the power of the collective.

We celebrate diversity and collaboration: our students thrive by learning alongside – and because of – one another. Friendships abound across gender, age and nationality; each one founded in mutual respect and providing a firm foundation for lifelong moral and cultural awareness.

#### How do we achieve this?

##### //Co-education

We hold a unique position as the only co-educational, independent secondary school in London SW1, enabling girls and boys to interact and develop emotional and social skills as they grow through the school.

##### //House system

Every student is a member of one of four Houses. Enabling vertical collaboration and interaction across all year groups, House communities meet weekly to plan inter-house competitions, charity events and more.

##### //Location

Our school population is representative of the global city in which we are based. This fusion of nationalities truly enriches the mature cultural understanding of our students. Be it through formal discussion or informal recreation, there is no better way for our young adults to learn of and respect the many cultures that form our worldwide community.



**Learning and  
thriving together**



Overlooking the peaceful Royal Parks and just moments from the world-class galleries, museums, concert halls, exhibitions and other cultural venues of our capital, we make the most of our surroundings on a daily basis – viewing them as a natural extension of the classroom.

With the likes of the Royal Academy, the Royal Institution and Buckingham Palace on our doorstep, inspiration surrounds our community at Eaton Square Senior School.

**London is  
our classroom**



**EATON  
SQUARE  
SENIOR  
SCHOOL**



**A broad, rich  
curriculum**

Our excellent facilities and resources and exceptional teachers give students the best possible chance to learn and grow. From day one, our curriculum is tailored to ensure individual progress and achieve academic potential.

Each student's timetable encompasses a broad range of subjects, granting them access to a huge variety of future study options and career paths. Our flexible timetabling also enables students to study what is right for them.

Both traditional and more contemporary subjects are available.

**English Maths Triple Science**  
**Art Classical Civilisation**  
**Computer Science Drama**  
**Business Studies French**  
**Geography History Latin PE**  
**Music Further Maths Spanish**  
**Psychology Religious Studies**

“ Students truly achieve their potential at Eaton Square Senior School. ”

Independent Schools Association



GCSE results are important. Alongside boosting confidence and self-esteem, they can be a stepping stone to a future full of opportunity.

We work closely with each student to track their progress throughout their time at Eaton Square. It is a priority to fulfil individual potential. Our students are motivated to achieve their best through the development of a growth mind-set and finding a clear purpose.

This approach means that Eaton Square students repeatedly achieve results far beyond initial expectations.

92% of our 2022 GCSE results were between 9 - 4 (equivalent to the previous A\* - C): 19% higher than the 2022 national average.

**2020 results**  
**95% grades 9-4**

**2021 results**  
**99% grades 9-4**

**2022 results**  
**92% grades 9-4**


**Academic results**

Student wellbeing is at the heart of an Eaton Square education.

Our targeted pastoral structure provides the necessary support to encourage students to take risks and reach beyond their comfort zone, always safe in the knowledge that we are there to help along the way.

The role of the Form Tutor is crucial to effective, consistent pastoral care. Every student needs a mentor and a champion. Our Form Tutors fulfil this role; guiding and supporting on a daily basis. Dedicated Form Time at the start and end of each day is unique for a London day school but, at Eaton Square, it is fundamental part of our school day.

Parents are very much encouraged to be involved in pastoral dialogue, enabling in-school and at-home collaboration to help each student achieve their potential.



**Our greatest pride is in our students**

“ Creativity and innovation are championed wherever possible – granting Eaton Square Senior School students every opportunity to thrive in our ever-changing world. ”

Absolutely Education



There is an artist in each of us. At Eaton Square Senior School, we draw out this innate creativity through art, drama and other forms of self-expression.

We know our students benefit from thinking imaginatively, finding innovative approaches to problems and working creatively with others.

Art and drama form part of the core curriculum as they provide important opportunities for students to express themselves, be creative and build their confidence. Students can also choose to take extra-curricular LAMDA tuition.

Creative inspiration often comes from our surroundings. In this respect, Eaton Square is outstanding. Indoors, our breathtaking Art and Design room features a magnificent glass domed roof – filling the room with light and the students with creativity. Outdoors, the leafy green acres of Royal Parks, the Royal Academy of Arts and other globally-renowned galleries are maximised at every opportunity.

**Be creative**

**It's not just music.  
It's numeracy, literacy,  
dexterity, discipline  
and self-expression.**



Music opens doors for our students.

Music is not just a universal language, it helps develop valuable transferable skills. The analysis of musical pieces develops listening competence and literacy; while learning about notation and rhythms is beneficial for maths. Music also offers a different way for students to express themselves; with musical performance in turn acting as a useful confidence booster.

We provide an outstanding range of specialist music teachers who offer one-to-one instrumental lessons to many of our students. Options include piano, flute, clarinet, saxophone, violin, trumpet, voice, guitar and drums.

Independent and collaborative performance opportunities abound for all students, such as concerts, rock bands and ensembles.

We aim to spark an interest in music that will add a rich extra dimension to students' lives, both during and beyond school.



**Inspiring a  
love of music**

“ Sport has the power to change the world. It has the power to inspire. It has the power to unite people in a way that little else does. ”

Nelson Mandela



Sport

At Eaton Square, PE and Games form an integral part of the school week. Both encourage strong physical and mental health, resilience, fair play and teamwork. The purpose of our sporting ethos at Eaton Square is to instil these benefits for life.

For a central London school, our students enjoy unrivalled access to professional sports grounds, pitches and facilities; always admirably guided by our specialist teachers and sports coaches.

Our main sports grounds in Acton provide a safe and spacious environment for students to play all traditional team sports. We also use facilities on our doorstep in Green Park and Hyde Park, with a swimming pool close by.

Football Rugby Rounders  
Hockey Tennis Cricket  
Netball Cross-country  
Running Athletics Rowing  
Crossfit Yoga Street dance  
Fencing Squash Table  
tennis Swimming

“ The School maximises exceptional facilities to bring subjects to life. ”

School House magazine

The setting for Eaton Square is a stunning Grade I Listed building that spans five storeys.

Dating from 1762, its grand staircases, chandeliers and marble pillars create an awe-inspiring learning environment.

---

The building blends traditional British architecture with state-of-the-art facilities. In addition to modern classrooms and multiple science labs, the school also features a beautiful art studio and drama room.

For over a century the building was home to earls, barons, ladies, authors and even Napoleon III's ambassador.

As such, students might now play electric guitar in a room lined with 18th century green silk wallpaper, study History in a room designed by Robert Adam, or revise in a library where Ian Fleming wrote a Bond novel.

This is where learning comes to life.



**Where historic London meets the 21st century**

“ When it comes to outdoor learning in central London, Eaton Square Senior School is exceptional. ”

The Resident



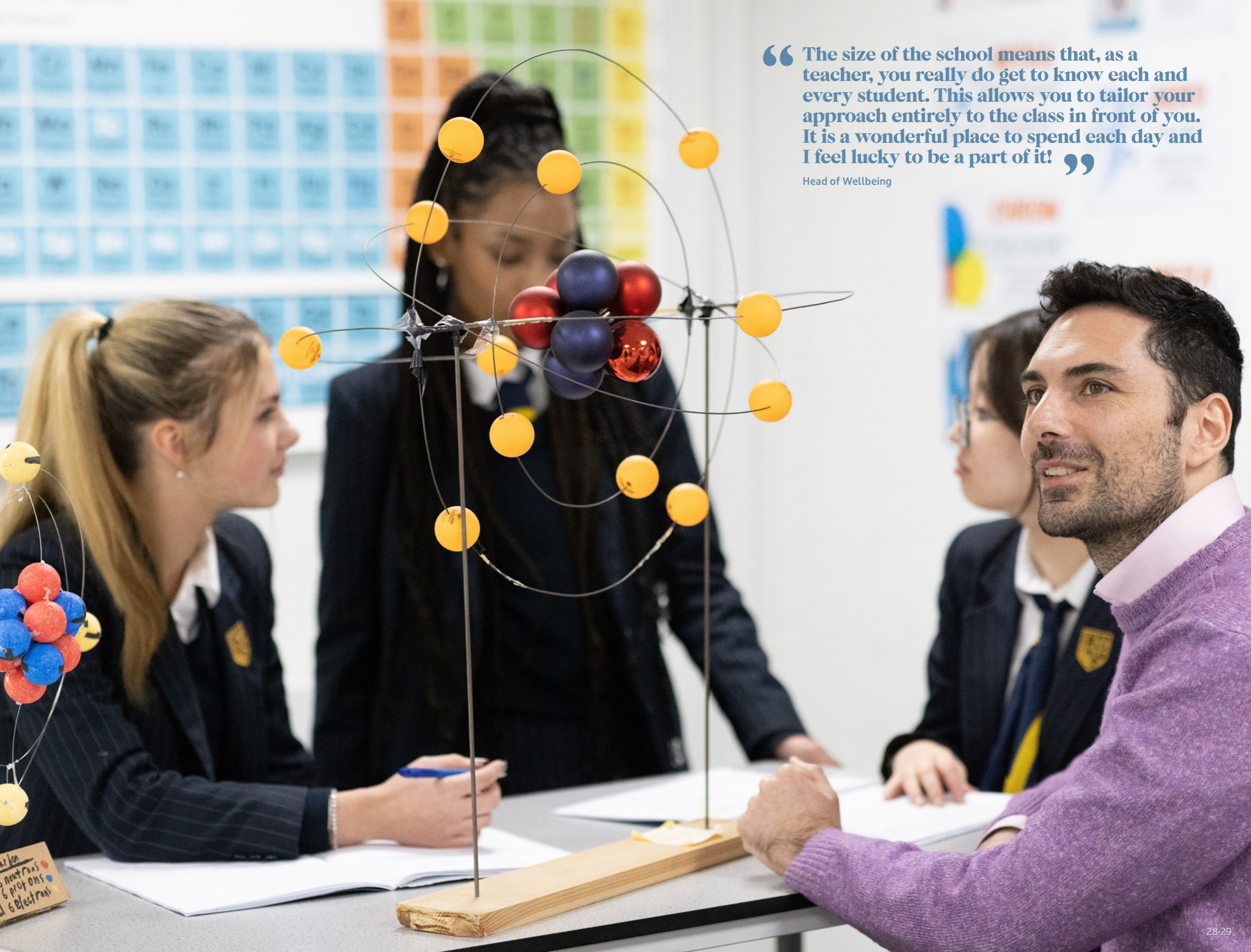
Our school directly overlooks Green Park, a Royal Park offering over 40 acres of trees and tranquillity. Every day, students can spend break and lunchtime enjoying its safe and leafy green surroundings.

---

Given their close proximity, we view the Royal Parks as an extension of the classroom. All of our teachers make the most of learning outdoors, bringing an ever-fresh dynamic to lessons.

Other school activities that benefit from our park side location include Leadership projects, mindfulness walks, athletics practice and charity events.

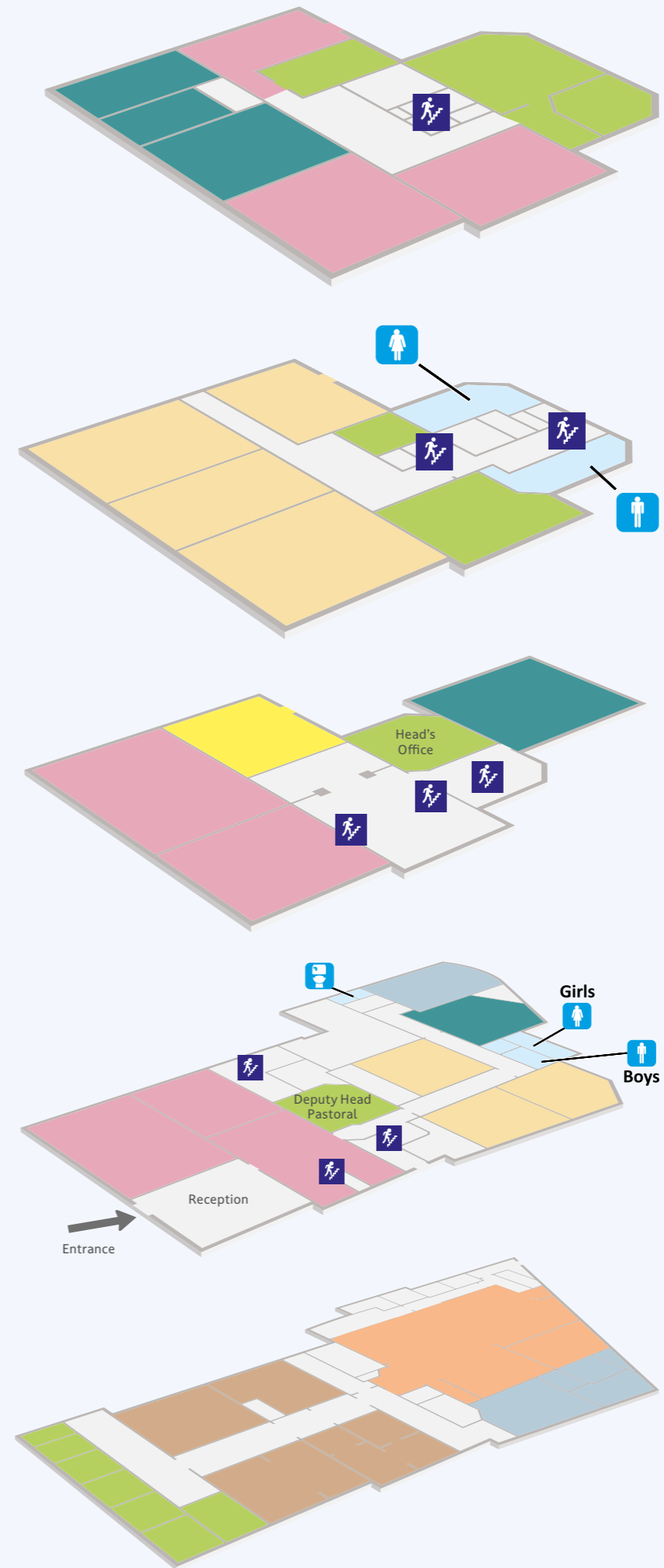
**Making the most of the Royal Parks**



“ The size of the school means that, as a teacher, you really do get to know each and every student. This allows you to tailor your approach entirely to the class in front of you. It is a wonderful place to spend each day and I feel lucky to be a part of it! ”

Head of Wellbeing

“ A nurturing, co-educational day school in the heart of our capital. ”



Top Floor	
<span style="color: #90c040;">■</span>	Staff Areas
<span style="color: #008080;">■</span>	Performing Arts
<span style="color: #e91e63;">■</span>	Learning Enrichment & Languages

Second Floor	
<span style="color: #90c040;">■</span>	Staff Areas
<span style="color: #add8e6;">■</span>	Toilets
<span style="color: #ffc107;">■</span>	English & Humanities

First Floor	
<span style="color: #008080;">■</span>	Drama
<span style="color: #ffc107;">■</span>	Library
<span style="color: #e91e63;">■</span>	Creative Learning Spaces

Ground Floor	
<span style="color: #808080;">■</span>	Gym
<span style="color: #008080;">■</span>	Performing Arts
<span style="color: #ffc107;">■</span>	Maths
<span style="color: #e91e63;">■</span>	Creative Learning Spaces

Basement	
<span style="color: #90c040;">■</span>	Staff Areas
<span style="color: #add8e6;">■</span>	Changing Rooms
<span style="color: #ffc107;">■</span>	Canteen
<span style="color: #808080;">■</span>	Science

When you first step through the doorway of Eaton Square Senior School, you immediately sense an atmosphere that blends the best of British traditions and the latest educational thinking.

---

In the centre of one of the world's most cosmopolitan cities, Eaton Square students will enjoy a school that is a Robert Adam townhouse and a playground that is a Royal Park.

To find out more and book your visit, please contact us.

020 7491 7393  
admissions.senior@eatonsquareschools.com

**We look forward to meeting you.**



**Join Us**



---

“Dukes Education is a **family** of schools and educational services based in the UK. Our schools are **distinctive** in identity and style, yet united in offering outstanding teaching and learning, providing the strongest **foundations** for young people to lead meaningful and fulfilling lives.”

---

# Great minds set free



Eaton Square Senior School  
106 Piccadilly  
London W1J 7NL

020 7491 7393  
[admissions.senior@eatonsquareschools.com](mailto:admissions.senior@eatonsquareschools.com)  
[eatonsquareschools.com](http://eatonsquareschools.com)