



**ISA International School  
Science City  
爱莎科学城外籍人员子女学校**



# CONTENT

---

---

04

**Our Purpose**  
办学宗旨

---

14

**Our People**  
学校团队

---

24

**Our Programmes**  
课程设置

---

36

**Our Place**  
校园设施

---

42

**Your Opportunity**  
加入爱莎科学城

# Our Purpose 办学宗旨





# Welcome by Head of School

校长致辞

David Edwards

Thank you for your interest in ISA International School-Science City.

The booklet you are now reading conveys with clarity who we are and what we aim to do for all families. The pages that follow provide clarity on our purpose, vision and mission. We share in the information regarding the people we are bringing together at this extraordinary school, as well as the programmes on offer across the campus.

We are a highly aspirational organisation, committed at our core to planning, launching and developing a leading international school within the Greater Bay Area. This drive towards excellence has started with the design and construction of an exceptional facility. We have worked with world-leading architects to create a facility which deeply enhances contemporary teaching and learning.

Coupled with our facility, developed on land we own and built by China's most prestigious construction company, we are developing curriculum of the highest level. As a purpose-built IB School, we aim to deliver superior teaching and learning through the framework provided by the International Baccalaureate Organisation Primary Years, Middle Years and Diploma Programmes.

This booklet is one component of a suite of resources available to you. We encourage you to follow us on WeChat, as well as making contact with a member of our team. By doing this, we can ensure that the ISA Science City team gets to know your family well, and provide answers to the many questions you may have, which are unique to you.

We will expect a great deal from members of our founding community. To become extraordinary takes effort, passion and resilience. These qualities will be very clear in our staff, and we encourage families within China and abroad who are seeking a school committed to the development of excellence for each individual child, to contact us and take the time to explore who we are and what we aim to achieve.

Sincerely,

感谢您关注爱莎科学城外籍人员子女学校。

通过阅览该册子,您将能全面了解爱莎科学城、其办学愿景与使命以及学校将如何实现这些办学宗旨。此外,您还能深入了解爱莎科学城来自世界各地顶尖的领导和教师团队以及学校的课程体系和丰富多元的辅助课程。

爱莎致力于在大湾区规划、筹办和发展一所领先的国际学校。爱莎科学城一直秉承追求卓越品质的态度,与世界顶级的建筑设计师合作,从学校设计到校园建设,最大程度地满足并促进现代化的教与学,为学生打造一流的校园设施。

校园由中国最负盛名的建筑公司在学校自有土地上开发建造,学校也正在开发高水平的爱莎特色课程。作为一所为IB量身打造的国际学校,爱莎科学城将采用IB国际文凭小学、中学和大学预科三大核心项目,给学生带来非凡的学习体验。

您还可以通过关注学校的微信公众号进一步了解爱莎科学城,或与学校团队成员进行一对一沟通,以便我们能更好地了解您家庭的需求并回答相应问题。

爱莎科学城所得到的一切成就离不开全体成员一颗颗不断进取、充满热情和坚韧不拔的初心。爱莎科学城以实现学生个体全面发展为己任,鼓励所有希望让孩子在这样一所学校接受教育的国内外家庭与我们联系,并最终加入爱莎科学城,成为爱莎大家庭的一份子。

致敬,



# Our Vision and Mission

## 办学愿景与使命

### Vision 愿景

To be the acknowledged leader of excellence in international education.

爱莎科学城外籍人员子女学校致力于成为国际教育的卓越领航者。

### Mission 使命

We commit to providing outstanding learning opportunities, through an environment of mutual respect, transparency and engagement.

爱莎科学城外籍人员子女学校致力于打造相互尊重、透明和紧密联系的校园环境, 为学生提供一流的多元学习机会。



# ISA Science City At A Glance

## 爱莎科学城总览



Open in September 2020  
2020年9月开学



International Standard Curriculum  
国际标准课程体系



A Home for 1800 Students  
可容纳1800名学生的爱莎大家庭



Age Range from 2 to 18  
欢迎2至18岁的学生加入爱莎科学城



Outstanding K-12 Education  
一流的K-12国际教育



Boarding School for 500 Students  
为500名学生提供国际标准学生公寓





# Excellent Location

## 学校地理位置优越

ISA Science City is located in Yushu Road, Science City on the border of Tianhe and Huangpu Districts. Adjacent to the Guangdong Olympic Centre, it is only a 25-minute drive from CBD of Guangzhou. Located in the heart of the Greater Bay Area, it is only a 50-minute drive from the Guangzhou Baiyun International Airport and Guangzhou South Railway station, and only a 30-minute drive from Guangzhou East Railway Station. With a construction area of 78,000 square metres and a contemporary design by renowned international architects, ISA Science City will be an exemplary school in China and internationally, providing a high-quality education for international students in the Greater Bay Area.

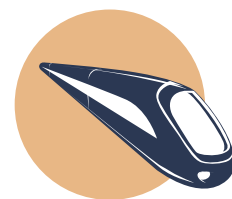
爱莎科学城外籍人员子女学校位于粤港澳大湾区的中心区域, 地理位置优越, 距离广州市中心仅约25分钟车程, 距离广州白云国际机场和广州南站仅约50分钟车程, 距离广州东站在约30分钟车程, 校区总建筑面积78,000平方米, 将建成一所“国内领先、世界一流”的模范国际学校, 为粤港澳大湾区的家庭提供优质的国际教育。



From ISA Science City  
从爱莎科学城出发

**25 Mins**  
分钟

To Guangzhou CBD  
距离广州市中心



From Guangzhou  
South Railway Station  
从广州南站出发

**30 Mins**  
分钟

To Guangzhou East  
Railway Station  
距离广州东站

**50 Mins**  
分钟

To Guangzhou South  
Railway Station  
距离广州南站

**19 Mins**  
分钟

To FoShan  
距离佛山

**29 Mins**  
分钟

To Shenzhen  
距离深圳



**50 Mins**  
分钟

To Guangzhou Baiyun  
International Airport  
距离广州白云国际机场

**48 Mins**  
分钟

To Hong Kong  
Downtown Area  
距离香港市中心

**60 Mins**  
分钟

To Zhuhai  
and Macau  
距离珠海和澳门

From Guangzhou  
East Railway Station  
从广州东站出发

**26 Mins**  
分钟

To Dongguan  
距离东莞



# Five Pillars of ISA Science City

爱莎科学城五大支柱



Committed to excellence

追求卓越的态度



Leading language school

多国文化融合及多语言学习项目



International standard curriculum,  
teaching and learning

符合国际标准的课程体系与教学



Bringing the best of East  
and West together

融合中西文化与教育精粹



Balanced programme:  
Academics, sports, arts,  
community service action

提供学术、体育、艺术

和社区服务行动全面发展的均衡教育



## A Balanced ISA Education Emphasises: 为了打造均衡 发展的教育体系, 爱莎注重:

- **A Holistic Approach:** We focus on the 'whole child' - intellectual, physical, emotional and social development.
- **Lifelong Learning:** We focus on student motivation, individual differences, learner-centered approaches, metacognition and student well-being.
- **Global Mindedness and Connections:** We focus on learning English, Chinese and Mother-tongue languages, appreciating the values beneath cultures of others.
- **Building of Community:** We focus on positive relationships between the school and parents ensuring as close an alignment as possible between the values of parents and the strategic intent and operation of the school.

- **全人教育:** 爱莎注重学生智力、体魄、情感和社会的全面发展。
- **终身学习:** 爱莎注重培养学生的积极性, 根据学生的个体差异, 采用以学习者为中心的教学方法, 引导学生开展自主学习, 并根据自身的实际情况进行调节, 关注学生的身心健康。
- **全球视野与跨文化融合:** 学生可以在爱莎多文化融合的国际校园中学习英语、中文和母语课程, 学会欣赏各种文化及其背后的价值。
- **创建开放式社区:** 爱莎重视有效、积极的家校合作关系, 确保家长的教育价值观与学校的教育理念保持一致, 促使家庭和学校形成合力, 以最终实现学生的全面发展。





# Our People

## 学校团队

David commenced as Head of School of ISA International School Science City in October 2019. He has served as Head of St. Kilda Road Campus, the largest and oldest campus of Wesley College in Australia, managing more than 1600 students and nearly 600 employees. Wesley College is Australia's top coeducational IB World School with a 153-year history.

David previously served as the Founding Principal then CEO of GEMS World Academy (Singapore), voted the leading international school in Singapore in 2017. GEMS Education is the world's largest kindergarten to 12th grade school operator with more than 90 schools in 14 countries. In 2017 he was awarded as one of Asia's top 100 CEOs.

David于2019年10月正式担任爱莎科学城外籍人员子女学校校长,此前,他是澳洲Wesley卫斯理学院最大和历史最悠久校区 - 圣基尔达路校区的校长,管理超过1600名学生及近600名员工。卫斯理学院是澳大利亚顶级的男女同校的IB世界学校,拥有153年的悠久历史。

David还曾先后担任新加坡GEMS世界学院的创校校长及CEO,该校在2017年被评为新加坡优秀国际学校。GEMS教育集团是全球最大的幼儿园至12年级学校运营商,在14个国家拥有超过90所学校。2017年,David还被评为亚洲前一百强CEO。

Stanley brings to ISA Science City significant experience in the operations of outstanding international schools in China and Singapore. Prior to joining the senior leadership team, Stanley served as the Head of General Administration of UWCSEA, the world's largest K-12 private international school, managing more than 5500 students and 1000 faculty members on two campuses in Singapore. Previously, Stanley was also the Director of Operations of Harrow International School Beijing.

Stanley把中国和新加坡优秀国际学校运营的重要经验带到爱莎科学城。在加入爱莎科学城前,Stanley曾任世界上最大的K-12私立国际学校——UWCSEA(东南亚联合世界学院)的总务长,管理两个校区超过5500名学生及1000名教职工。此外,他也曾任北京哈罗国际学校运营总监。



**David Edwards**  
Head of School  
校长



**Stanley Wong**  
Director of Operations  
运营总监

# ISA International Education Group

## 爱莎国际教育集团

The team at ISA International Education Group provides support services to the senior leadership of ISA Science City. ISAIEG is a small but highly experienced team, working within two divisions:

1. Business Support: Providing support to the ISASC leadership, particularly during the pre-operations phase. Specific guidance and collaboration occur with the planning and construction elements of the ISA Science City campus.
2. Education Support: Provides support to the ISASC leadership, mainly relating to curriculum design and development during the pre-operations phase.

爱莎科学城的领导团队得到了来自爱莎国际教育集团具备丰富创校经验的专家团队的全面保障, 其中包括:

1. 项目发展层面: 在学校的筹建阶段, 与爱莎科学城领导团队密切联系并提供专业的意见, 保证校园的规划与建造满足课程的教学需求。
2. 教育层面: 在学校的筹建阶段, 与爱莎科学城的领导团队协作, 共同设计并开发爱莎的特色课程。

## Project Development Team

### 项目发展团队



**Stephen Lai 黎伟雄**

**Vice President, Project Development, ISAIEG**  
爱莎国际教育集团项目发展 副总裁

Stephen was former Vice President of Harrow International Management Services, responsible for the planning and management of Harrow International School development projects. He was responsible for the planning and management of Harrow International School development projects, while also identifying new campus locations in Mainland China/Hong Kong and South East Asia.

Stephen曾任哈罗学校教育运营公司副总裁, 负责哈罗国际学校发展项目的规划与管理, 并帮助哈罗学校在中国大陆、中国香港以及东南亚地区择地建校。



**Gary Butner**

**Director, Project Development, ISAIEG**  
爱莎国际教育集团项目发展 总监

Gary was Deputy Principal (Curriculum) at Somerville House, a leading private school in Queensland for 10 years. He was Principal of the Tsinghua International Experimental School, Shenzhen for 3 years.

Gary曾担任澳大利亚昆士兰顶级私立学校Somerville House副校长10年。他曾担任深圳清华实验学校国际部校长3年, 该校有8000名学生, 其中国际学生超过1000名。



# Education Management Team

## 教育管理团队



## Mark Beach

**Vice President, Education Management, ISAIEG**  
爱莎国际教育集团教育管理 副总裁

Mark was the founding Principal of ESF (English Schools Foundation) Discovery College in Hong Kong. In 2019, Discovery College's IB Diploma results placed it amongst the very top ranking IB schools worldwide. Before leaving New Zealand, Mark was the Director of the NZ Correspondence School, the 3rd largest school in the world with over 20,000 students.

Mark是香港ESF(英国学校基金会)智新书院的创始校长。2019年,智新学院的IBDP成绩跻身于全球顶尖IB学校行列。在离开新西兰之前,Mark曾担任新西兰Correspondence学校的总监,该校为世界第三大大学,有超过两万名学生。



## Craig Boyce

**Education Director (International), ISAIEG**  
爱莎国际教育集团 教育总监(国际)

Craig worked as the Founding Head of School at KaiWen Academy (Chaoyang) and as Director of Beanstalk International Bilingual School in Beijing. He worked in Hong Kong Chinese International School (CIS) for twenty-three years, including as the Curriculum Director of CIS. Craig made many valuable contributions to CIS and helped it to become one of the leading DP schools.

Craig是一位融合中西方文化精髓及终身学习的践行者。他拥有香港大学、新西兰梅西大学、北京大学、澳大利亚迪肯大学等不同专业方向的8个学位。Craig曾在北京的凯文学校(朝阳)、青苗国际学校分别担任校长和总监。Craig在香港汉基工作了23年,并最终担任香港汉基的课程总监,他为促进汉基学校成为最顶尖的DP学校作出卓越贡献。



## Greg Zhang 张柏祥

**Education Director (Chinese), ISAIEG**  
爱莎国际教育集团 教育总监(中国)

Over the past 30 years, Greg has served as the Director and Principal of Huanggang Middle School Guangzhou, Yabao School Affiliated to Sun Yat-sen University, Shanghai New Epoch School in Chongqing. He was also Vice General Manager of Dongchen Education Group.

从事基础教育的近三十年里,张校曾担任黄冈中学广州学校、中大附属雅宝学校、上海新纪元(重庆)学校等多家高端学校的主任和校长,同时曾担任东辰教育管理有限公司的副总经理。





# Teachers 教师团队

The difference between good and outstanding schools is most strikingly obvious in the quality and commitment of the staff. For ISA Science City, we are working diligently to attract, support and retain a staff who are committed to our vision for excellence, and are passionate about ensuring this vision is brought to life in teaching, co-curricular, community service and boarding programs of the highest quality.

ISA Science City is committed to recruiting teachers who value students and love teaching. They have a fine record of continuous professional learning and take education as their lifelong career. In addition, teachers of ISA Science City must have worked in high performing international schools with high expectations of students and fully understand our purpose. Qualification review is also an essential component of our teacher recruitment strategy, making certain they have recognized degrees for the specific role they are applying for.

With a mix of industry experts from across China, Asia and internationally, teachers of ISA Science City are passionate about their subject area and strive for providing students with outstanding learning opportunities.

好学校与一流学校之间的最大差别在于学校教职工的素质和责任心。在爱莎科学城校区,我们努力吸引、支持和留住每一个为实现爱莎宏大愿景而全情投入的员工,以确保爱莎的愿景在教学、辅助课程、社区服务以及高质量的寄宿项目中得以全面实现。

爱莎科学城学校致力于招聘热爱学生与教学的教师团队,所有教师均拥有专业且优秀的教学履历,并将教育作为其终生事业。此外,所有教师都必须拥有在一流国际学校工作的经验,并充分理解学校的办学目标。同时,教师资历审查也是教师招聘标准中的重要一环,以此确保所有教师均已获得与其申请的特定岗位相匹配的学位认证。

爱莎科学城的教师团队由一批来自亚洲及世界各国的顶尖教育专家组成,具备丰富的本地与国际教学经验,致力于为学生提供多元且高品质的学习机会。



# Attributes of the ISA Science City Graduate

## 爱莎科学城毕业生培养目标



### Creative Problem - Solvers

#### 创造性问题解决者

Our graduates will have experience and skills to develop sustainable solutions which positively impact the world.

爱莎科学城的毕业生将具备充分的经验和技能,创造更多可持续运行的解决方案,为世界做出积极的贡献。



### Inter-Culturally Aware

#### 跨文化意识

Our graduates will have a strong understanding of self, as well as empathy, respect and knowledge of others.

爱莎科学城的毕业生将拥有强大的自我认识能力和同理心,理解和尊重拥有不同文化背景的人们。

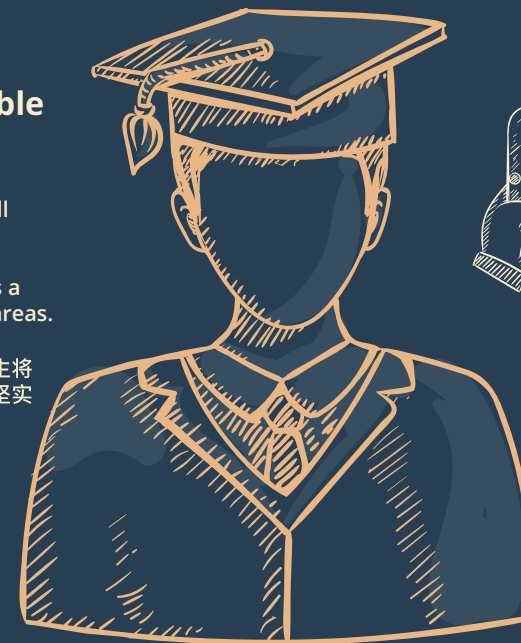


### Knowledgable

#### 知识渊博

Our graduates will possess a strong foundation of knowledge across a range of subject areas.

爱莎科学城的毕业生将拥有多学科领域的坚实知识基础。



### Digitally Literate

#### 前沿科技的领航者

Our graduates will be comfortable in the effective use of technology today, possessing skills which will be transferrable into the future.

爱莎科学城的毕业生将能灵活运用当今世界的最新科技,并掌握引领未来科技发展的能力。



### Effective self-managers

#### 高效能自我管理者

Our graduates will have developed the organisational skills to manage themselves, crucial to their success in a wider world both professionally and personally.

爱莎科学城的毕业生将具备自我组织和管理的能,让他们在更广阔的世界中收获专业 and 个人的成功。



# Our Programmes 课程设置



**International Curriculum Strengthened by  
Best Practices from Around the World**  
国际认可且融合全球教育标准最高水平的课程体系

# Early Childhood 幼儿园课程

Our Early Childhood Learning Center (ECLC) is based within a unique stand-alone precinct within the ISA Science City School campus. The ECLC commences a child's formal learning journey at our school from 2 years of age, providing children with opportunity for discovery, growth and learning. Use of a variety of natural materials, within a green, clean and safe contemporary facility, will give children the freedom to explore and express themselves.

Inspired by the philosophy of world-renowned Reggio Emilia early childhood teaching and strengthened by the IB Primary Years Programme standards and practices, the ISA Science City ECLC will provide both structured and unstructured learning elements to best suit learning at these special grade levels. Our focus on inquiry and self-guided learning is supported by highly qualified and experienced educators, who partner with parents in the educational development of each child.

幼儿学习中心 (ECLC) 在校园内设有专属的活动空间, 在这里, 孩子们从2岁就可以开始他们的学习之旅, 幼儿学习中心给孩子们提供探索、成长和学习的机会。让孩子们可以在绿色、清洁、安全且采用天然材质建成的现代设施中自由地探索和表达自己。

爱莎科学城幼儿园课程受享誉全球的瑞吉欧·艾米里亚幼儿教育理念的启发, 融入IB国际文凭小学项目的标准和实践, 为孩子提供体系与非体系相结合的多元学习元素, 更好地满足该特殊年龄段学生的学习需求。我们致力于帮助每一位孩子养成探究性学习和自主学习的习惯, 带领优质且经验丰富的教育者与家长紧密合作, 支持每一个孩子的个体发展。





# Primary School 小学课程

In the Primary School, our learning programme is built around each child as a unique individual, with every student recognized for possessing their own abilities, experiences and interests. Crucial to their learning development is the utilization of the IB Primary Years Programme, a framework for our education which meets the highest of international education standards.

As an inquiry-based programme, the Primary School will ensure that individual subject areas are strong and challenging, whilst binding each course together. By helping students make connections between each subject area, our programme is well-placed to help students apply their knowledge, skills and conceptual understanding in real-world situations.

每一位学生都是独特的个体,因此,小学阶段的学习计划依照每一个学生的特性而设置,目的是让每一位学生都能发挥自己的长处,在不断积累经验的过程中培养兴趣,并最终得到认可。小学课程以IB国际文凭小学项目为教育框架,采用符合国际教育标准最高水平的课程,引导学生开展学习项目并最大程度地促进他们的学习发展。

小学课程以探究学习为基础,在确保各独立学科难度的同时注重多个学科之间的联系。这样的课程设置不仅能帮助学生在在学习过程中把各个学科所学的知识联系起来,还将有利于学生在现实生活中运用课堂中所学的知识、技能和概念。



## Secondary School 中学课程

ISA International School- Science City is opening a purpose-built Secondary School that is designed to best support teaching and learning of the highest standard. The Secondary School precinct will be an outstanding learning environment, with exceptional spaces in our Science Precinct, as well as our exciting Innovation Hub. For our students in Grades 6 to 12, this important area of the campus will play a significant part in their learning journey, as they move through the final grades of our school, prior to joining universities and colleges around the world.

ISA Science City aims to provide the final two core programs of the International Baccalaureate. For Grades 6-10, all students will undertake a rigorous programme of study across the eight subject areas mandated within the IB Middle Years Programme. In Grades 11 and 12, our students will undertake the most globally recognized programme of study, as we aim to provide the IB Diploma Programme, which is recognized internationally for its rigor, the breath of course requirements, as well as the standard of thinking and learning that is required by each successful student. It is in part because of this, that universities and colleges around the world value students who have completed the IB Diploma, often fast-tracking their entry.

爱莎科学城中学部的设计最大程度地满足高标准教与学的需求,为学生开展中学阶段的学习提供绝佳场所,尤其是位于中学部教学楼拥有开阔空间的科学中心和创新中心。对于6至12年级的学生来说,校园里的这些设施将在他们中学学习的阶段发挥重要作用,他们也将会从这里启航走向世界各地的各大高等学府,开始他们的大学生活。

爱莎科学城在中学阶段为学生提供IB国际文凭项目的最后两项核心课程。6-10年级的所有学生都将在IB国际文凭中学项目(IB-MYP)的框架中对八大学科领域进行严格的学习。学校为11-12年级的学生提供获得全球高度认可的IB国际文凭大学预科项目(IBDP),该项目凭借其严谨的课程设置以及严格要求每个完成课程的学生具备达到其既定标准的思考和学习能力等要求而在国际上获得广泛的认可。正因如此,世界各地的著名大学都特别青睐那些顺利完成IB国际文凭大学预科项目的学生,并为这些学生提供快速升学通道。





# Our Leading Language Programmes

## 多国文化融合及多语言学习项目

English.  
Chinese.  
Mother Tongue.



Language learning is an important part of life for students at ISA Science City. We offer 5 language learning pathways for students aged 2 to 18. All students from Early Childhood to Secondary School learn English and Chinese in a pathway and level that best suits their ability. The ISA Science City mother-tongue programme provides after-school language classes to support the maintenance of languages other than English and Chinese.

作为一个多国文化融合的国际化社区,爱莎科学城注重培养学生的多语言技能。爱莎科学城为2-18岁的学生提供五大语言学习项目,从幼儿园到高中,所有学生都可以根据自身需求选择适合自己的英文和中文课程。此外,学校还将为学生提供课后母语课程,让学生在提升中英文水平的同时,也注重母语的学习。

Five Language Learning Pathways 五大语言学习项目	
English 英文	English Language and Literature 英语语言与文学
	English Language Acquisition 英语语言习得 (英文强化)
Chinese 中文	Chinese Language and Literature 中国语言与文学
	Chinese Language Acquisition 中国语言习得 (中文强化)
Mother Tongue 母语	Potentially Japanese, Korean, Italian, French, Spanish, Arabic and other languages, as families request 如日语、韩语、意大利语、法语、西班牙语、阿拉伯语等其他国家语言



Arts education is a significant component of the child's education at ISA Science City. It is through the arts that we understand culture, whilst developing our creativity. For ISA Science City, our Arts programme will fully utilize the exceptional facilities of our school, to provide all students with opportunities to explore, discover and develop their creative capacities through the Arts. Our Arts programme is divided into two key areas:

- **Within the curriculum**
- **Outside the curriculum**

Within the curriculum, all students will undertake a formal study of three main Arts domains. These include Visual Arts, Drama and Music. The exploration of the Arts and the programme within the school day, begins in our ECLC and continues through Secondary School.

From ECLC through to Grade 8, all students undertake study in all three Arts domains. From Grade 9, students will be required to choose a specialty area, which will enable them to become far more focused on one specific arts domain, within the curriculum.

Outside the curriculum, our extensive co-curricular programme provides all students with unlimited possibilities for the development of the artistic talents.

艺术课程是爱莎教学中的重要组成部分, 学生通过艺术感受并认知不同文化, 同时培养他们的创造力。在爱莎科学城校区, 艺术课程将充分利用学校的专业设施, 为全体学生提供探索艺术, 发现并发展其创造才能的机会。我们的艺术课程分为两大部分:

- 课程内艺术课程
- 课程外艺术课程

在课程范围内, 所有学生将系统学习三个主要的艺术领域(视觉艺术、戏剧和音乐)。日常的艺术教学与拓展从幼儿园起并一直持续到中学。

从幼儿园阶段到8年级, 学生将对三大艺术领域进行全面的学习。从9年级开始, 学生将从这三大艺术领域中选择一个更加专业的领域, 进行更深入的学习。

在课程外, 爱莎丰富多样的辅助课程也为全体学生提供了发展艺术才华的无限可能。

# Arts 艺术



# Sports 体育

Every child in every grade level will be actively involved in the sport programme of ISA Science City. For our school, we will have a four-tiered approach to the teaching, learning and involvement in sport:

Tier One: Learn for fun

Tier Two: Learn to play

Tier Three: Learn to compete

Tier Four: High performance

Our four-tiered approach ensures that every child is provided with the skills, understanding and enjoyment that comes from learning sport. Skills such as collaboration and team work are vital tools that every student should possess. Resilience and commitment are equally vital attributes that our sport programme will develop in every child. Integrity, respect, and a sense of fairness are additionally vital development areas that arise from our sport programme.

Our goal is simple: to provide pathways and opportunities for our students through our sport programme, that also best utilizes our world-leading sporting facilities, for a life-long enjoyment of sport.

Key teams and activities that we anticipate providing across all four tiers of our programme include, but are not limited to:

- Learn to swim
- Competitive swim training
- Basketball
- Badminton
- Table Tennis
- Track and Field
- Soccer
- Rugby
- Cross-country
- Volleyball

在爱莎科学城,各年级学生都将积极参与到丰富的体育项目中。学校将采用四级教学法来进行体育教学,引导学生在各项体育项目的学习和参与:

第一级:为“乐”而学

第二级:基本技能的培养

第三级:初级竞赛

第四级:专业级竞赛

该四级教学法可确保每个学生都能在体育学习中获取技能、理解和乐趣。协作与团队合作能力是每个学生应具备的重要素养;坚持与奉献精神是我们致力培养每个学生的重要属性;正直、尊重与公平则是我们关注的重要发展方面。

我们的目标很简单:通过专业的体育教学计划为全体学生拓展和提供发展的途径和计划,并最大程度地利用校区顶级的体育设施。

学校将在这四个教学层级上提供包括但不限于以下的主要活动:

- 游泳
- 竞技游泳训练
- 篮球
- 羽毛球
- 乒乓球
- 田径
- 足球
- 英式橄榄球
- 越野赛跑
- 排球



# Beyond the Classroom

## 40+ Co-curricular Activities

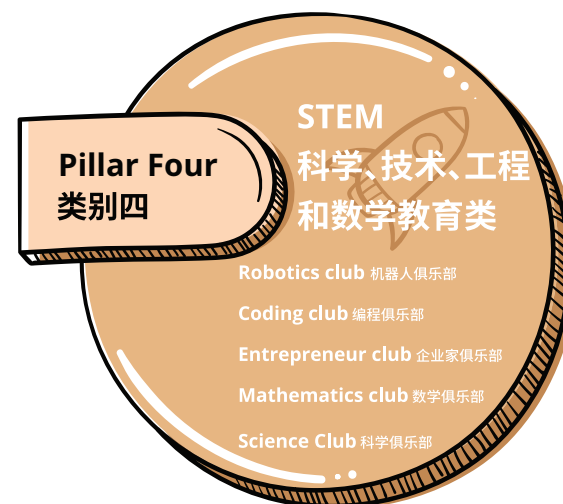
### 超过40类丰富多元的课外辅助课程

We anticipate commencing with up to 40 different co-curricular activities at ISA Science City in our first school year. For us, co-curricular activities provide a wonderful opportunity for students to explore a range of areas of interest, beyond the classroom.

Our co-curricular programme extends the core teaching and learning provided by our school. As such, our co-curricular programme has four key pillars, which students may select activities from within:

爱莎科学城将于第一学年为全校学生提供超过40项不同种类的辅助课程,对于爱莎而言,辅助课程为学生提供了绝佳的探索课堂外领域的机会。

辅助课程在学校提供的核心教学上做出了更进一步的扩展。因此,爱莎的辅助课程有四项重要类别供学生选择:



Our co-curricular programme will be provided to all students at our school, with age appropriate activities overseen by our internal team, with external providers assisting in the provision of excellent activities. These activities will occur during lunchtime and/or after-school, Monday to Thursday each week.

爱莎辅助课程项目将对全体学生开放,由校内团队按照学生年龄段进行分级,并由校外合作机构协助提供专业的课程教学,所有项目将在每周一至周四的中午时间或放学后进行。



# Our Place

## 校园设施





# A Purpose-Built IB School

## 为IB量身打造的国际学校

ISA International School Science City has been designed by leading architect CPG. Within the concept and design, there is a strong emphasis on the facilities supporting teaching, learning and well-being. The school-facilities will be outstanding, setting a new benchmark for international schools in China and most certainly within the Greater Bay Area. Students will utilize spaces which support academic rigor, research, collaboration, creativity, performance and innovation.

With a construction area of 78,000 square metres, ISA Science City will be built to achieve the US LEED certification, an internationally recognized measurement for evaluating sustainable practice in design and construction. Additionally, the facility will meet the China National Green Building Certification, and will have a leading FM (Facility Management) company to manage the school's canteen, sanitation and security.

爱莎科学城校园由世界领先的建筑设计团队CPG设计,整体概念和设计均满足学校课程教学需求,为粤港澳大湾区的国际学校树立新的标杆,将全面升级粤港澳大湾区国际教育至世界顶尖水平。在这里,学生将能充分利用校园设施,更严谨地做学问、做研究、协作、创作、表演和创新。

学校总建筑面积78,000平方米,采用美国LEED认证(LEED认证是评价绿色建筑的工具,其宗旨是在设计中有有效地减少对环境和住户的负面影响)以及中国国家绿色建筑双标准,将成为华南地区第一家全校设计与建设均符合美国LEED标准的国际学校。此外,学校将聘请全球领先的校园设施管理专业公司对学校的饭堂、清洁和安保进行统一管理。



**50-METRE OLYMPIC POOL**  
50米奥林匹克游泳池



**AUDITORIUM FOR 800 PEOPLE**  
800人演艺厅



**SPORTSFIELD WITH ATHLETICS TRACK**  
标准运动场和400米跑道



**INDOOR SPORTS HALL**  
室内体育馆



**STUDENT BOARDING HOUSE**  
国际学生公寓



**WE ACQUIRED OUR LAND AND FACILITIES**  
自有土地配备顶级校园设施





# Boarding at ISA Science City

## 寄宿设施与服务

### A World Leading Contemporary Boarding School

#### 世界领先的现代化寄宿国际学校

This purpose-built residential facility for students Grades 6 to 12 will provide a safe, supportive and productive environment that will bring together international students living in China (including Hong Kong, Taiwan and Macau), South-East Asia and from around the world.

The ISA Science City Boarding House provides families near and far with two residential options:

Full-time boarders: Residents attend seven days and nights a week during term time. This option is ideal for international

students and those from more distant parts of China.

Weekly boarders: Residents attend at the school Monday to Friday. This provision enables those students from cities easily accessible to Guangzhou, the option of returning home each weekend. It will be particularly popular to families in Hong Kong, given the high-speed train service which connects these two great cities. Typically, students will arrive at school by 8.00am on Mondays and return home on Friday evening.

爱莎科学城配备粤港澳大湾区范围内最具现代化且在亚洲地区最具特色的寄宿设施, 学校为6至12年级的学生提供安全、有爱和高效的学习与生活环境, 让来自中国香港、中国台湾、中国澳门、东南亚地区以及世界各地的学生在此欢聚一堂。

爱莎科学城为学生提供两种寄宿选择:

全学期寄宿制: 开学期间, 学生每周住校七天。这一种寄宿模式非常适合家在海外以及家在国内但离校较远的学生。

五天寄宿制: 学生逢周一至周五住校。这一种寄宿模式适合家在广州周边城市的学生, 学生每个周末都可以回家。一般情况下学生会在周一早上8点到达学校, 并与周五晚上返回家中。

### Engaged Community

The ISA Science City Boarding House will be a welcoming, safe and supportive community, providing boarders with a home-away-from-home. Our programme focuses upon each student's emotional, social, physical and cultural needs. Our balanced model of care will be delivered by a dedicated team of Boarding staff, mentors, academic supervisors, teachers and medical practitioners.

### Academic Support

Each week night, a programme of structured academic extension helps students consolidate classroom learning. Independent and small group sessions, supported by mentors, will assist students as they complete homework and assignments.

### Beyond Academics

Beyond academics, all boarders will be involved in at least one of the core Arts activities, with options including music, theatre and visual arts. Further still, an active healthy life is an important facet of ISA Science City school life, with all boarders being involved in a minimum of two sporting teams during the academic year.

### 紧密联系的寄宿社区

爱莎科学城学生宿舍将会是一个热情温馨、安全可靠、友爱互助的社区, 在这里, 寄宿学生可以感受到家一般的温暖。爱莎注重每一位学生在情感、社交、身体和文化上的需求, 并由负责学生寄宿的员工、导师、学术主管、老师以及校医组成的团队为学生的生活和学习提供全方位的关怀。

### 学术支持

逢周一到周五, 每天晚上都会有固定的学术拓展课程, 帮助学生巩固每天在课堂上所学的知识。学生会以独立和小组的形式完成作业和课堂任务, 在此过程中导师会提供相应的帮助与支持。

### 课堂之外

除学术发展外, 所有寄宿生都将参与至少一项核心艺术活动, 他们可以选择音乐、戏剧和视觉艺术。此外, 积极健康的生活是学生校园生活的重要组成部分, 因此, 所有寄宿生每学年都需要参加至少两个运动项目。



Your Opportunity

Be A Part of Our Community

加入爱莎科学城



# Admissions

## 招生入读

We are delighted that you are considering ISA International School Science City. We offer outstanding K-12 education to 1800 students aged 2 to 18 years old. All students who hold foreign passports – including students from Hong Kong, Macau and Taiwan, are welcome to apply for admission.

ISA Science City will enroll students from Early Childhood through Grade 10 in the first school year, and will have students in Grade 11 in 2021 and Grade 12 in 2022.

感谢您关注爱莎科学城外籍人员子女学校。爱莎科学城学校为1800名2至18岁的学生提供一流的国际教育，学校欢迎持有外籍护照以及来自港澳台地区的学生申请入读。

爱莎科学城外籍人员子女学校将在第一学年招收幼儿园至十年级的学生，并在2021年开始招收十一年级的学生，在2022年开始招收十二年级的学生。

Subschools 开办学段	Grade 年级
Early Childhood 幼儿园	EY1-EY4
Primary School 小学	G1-G5
Secondary School 中学	G6-G10

For more information about our admissions process, please visit our school website or join one of our many upcoming events, and most importantly, make an appointment to meet with us so that we may better understand the needs, hopes and aspirations of your family.

请浏览学校官网或者报名参加定期举行的招生宣讲会，了解更多爱莎科学城的更多资讯，欢迎有意向的家庭报名参加活动，也可以预约直接与教学或招生团队见面，以便我们能更好地了解您家庭的需求和期望。



# Contact Us

## 联系我们

[admissions@isagzsc.com](mailto:admissions@isagzsc.com)

86 020 3788 3996

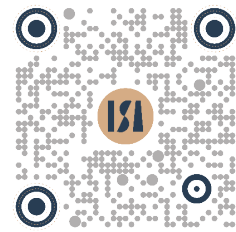
[www.isagzsc.com](http://www.isagzsc.com)

Admissions Centre  
招生咨询中心

Office 503, Guangdong Nongxin Mansion, No. 638  
Huangpu Avenue West, Tianhe District, Guangzhou  
广州市天河区黄埔大道西638号广东农信大厦503室

Please note that our team will be based at the ISA Science City Admissions Centre until May 2020.  
在2020年5月前，爱莎科学城校区的团队会在招生咨询中心办公。

We will update more exciting news on our WeChat official account. Please scan the QR code to stay in touch with us!  
请关注爱莎科学城微信公众号，我们将定期发布有关学校的最新资讯与活动预告！



Register for Our Parents Information Session  
报名参加爱莎科学城招生宣讲会



## Contact Us

### 联系我们

86 020 3788 3996

[admissions@isagzsc.com](mailto:admissions@isagzsc.com)

[www.isagzsc.com](http://www.isagzsc.com)

## Admissions Centre

### 招生咨询中心

Office 503, Guangdong Nongxin Mansion,

No. 638 Huangpu Avenue West, Tianhe District, Guangzhou

广州市天河区黄埔大道西638号广东农信大厦503室

