



NIHIL NISI BONUM



# Birkdale High School Transition Guide 2023/2024

Aspire Thrive Succeed





“We were extremely pleased to witness the excellent behaviour in the classrooms, and the respect for the teachers as we toured around during the school day.

“This put our son at ease and it is definitely the scenario that we were looking for, for him to thrive and succeed.”

Parental Visitor 2022

# Contents

Message from the Headteacher	4
Southport Learning Trust	5

## Transition

The Year 7 Team	6
Contacting the school	7
Peer Mentors	8
Arbor App for home/school communication	10
School day	10
Holiday dates	11
Key transition dates	12

## Teaching, learning and assessment

Curriculum at Birkdale High School	14
Bedrock	18
How we learn	18
Homework	19
Assessment	20

## Personal development, behaviour and welfare

Pastoral care	22
Attendance and punctuality	23
School discipline	25
SEND and Learning support	26
Routines for learning	28
Rewards and incentives	28
Aspire programme and period X	29
House system	30
House points	30
Top ten tips	31

## Practical information

School uniform	32
Mobile phones	35
School lockers	36
Cashless catering system	37
ParentPay	38
Transport	38
School photography	39
Home school agreement	40
Testimonials	41
Routines for learning	42
Notes	43





**Aspire Thrive Succeed**

## Welcome to Birkdale High School - a Southport Learning Trust school



It is with great pleasure that I introduce you to Birkdale High School, a Southport Learning Trust family member since September 2022.

Southport Learning Trust is a growing multi-academy trust formed in 2017 to support education provision in the local area and is well respected both locally and nationally. The Trust currently includes Greenbank, Stanley and Maghull High Schools and Kew Woods Primary School.

As a Trust, with a family of primary and secondary schools within the community, we aim to improve the life chances of all the students we teach through effective collaboration and look forward to continuing to achieve the highest possible outcomes for the children of Birkdale High School.

The school is an inspiring environment to start your secondary school journey, being calm, challenging and aspirational for all students. I hope you enjoy reading this Transition Guide and please visit the school to experience it for yourself.



**Mr Ian Raikes**  
CEO of Southport Learning Trust

### Message from the Headteacher

Welcome to Birkdale High School and what we hope will be for your son five successful and happy years.

What do we want for our children as parents/ carers? At Birkdale High School we believe that we look for the same things: in these crucial five years we want our children to be safe and happy in school, we want them to develop into responsible young adults and we want them to achieve their full potential.

Therefore, our commitment to you for the next five years is that we will work tirelessly with you to build what we consider to be the foundations of a successful lifelong education: Aspire - Thrive - Succeed.

We pride ourselves on having high aspirations for each of the boys who join us at Birkdale High School and to deliver these aspirations we have unashamedly high expectations in every area of school life and personal development.

We insist on the highest standards of appearance, behaviour, effort and attitude to learning, but we will also provide opportunities for him to experience new things, develop new

skills and grow personally and academically both in and out of the classroom. We will be there for him every step of the way and will always be in close communication with you so that he hopefully looks back at his time at Birkdale knowing that he got the best pastoral care any school could possibly offer and achieved the best academic results he could have ever hoped for.

Communication is key to an effective transition and this booklet is designed to collate and clarify some of the key aspects of school life that you will become familiar with over the years. It will also give you a quick guide to the year that lies ahead and how we are going to work together to ensure your son has the best possible start to secondary school.

Should you have any further questions after reading this booklet do not hesitate to contact your son's form tutor or Mr Carter, Head of Year 7.

Best Regards,

**Gareth Banks**  
Headteacher



"Pupils say that they enjoy coming to school because it is a happy place where they can make many friends."



# Transition

It is often hard to know how to achieve the balance between offering your child too much support (becoming the 'over-anxious parent') and letting things go on too long because you don't want to interfere.

The job is made much easier if you keep talking to your son about how things are at school and get a good idea about how they are feeling generally about school. This will give you a sound basis for deciding whether your intervention is required or not.

If we have any concerns we will always contact you but we always welcome contact from parents/carers at any time. Moving to secondary school affects each child differently and you know your son best, but if any aspect of school life is persistently distressing him then it is probably best to err on the side of caution and intervene early. Certainly if you have talked to him, offered reassurance, helped him come up with ways of solving the problem himself and things have still not changed, it is time to speak to the school.

## The Year 7 Team



### Head of Year 7

**Mr Carter**

mcarter@birkdalehigh.co.uk

*"We understand the move up to high school is not always straightforward, and will work with you and your son to ensure he is able to meet the demands high school brings."*



**7RP**

**Mrs Potter**

rpotter@birkdalehigh.co.uk



**7DZP**

**Miss Penn**

dpenn@birkdalehigh.co.uk



**7SJH**

**Miss Hunter**

shunter@birkdalehigh.co.uk



**7GB**

**Mrs Barlow**

gbarlow@birkdalehigh.co.uk



**7PC**

**Mr Cunningham**

pcunningham@birkdalehigh.co.uk



**Mrs Boyle**

rboyle@birkdalehigh.co.uk



**7TW**

**Mrs Whittle**

twhittle@birkdalehigh.co.uk



**7DAW**

**Mrs Woodcock**

dwoodcock@birkdalehigh.co.uk



**Mrs Roberts**

eroberts@birkdalehigh.co.uk



## Contacting the school

Your son will be given his own email address in the first two weeks at Birkdale High School. This gives him access to the email addresses of all the staff should you need to contact anyone specific. However we have listed some of the most important ones below for your benefit:

### Reception

01704 577253

mail@birkdalehigh.co.uk

### Headteacher

**Mr Banks**

gbanks@birkdalehigh.co.uk

### Head of Year

**Mr Carter**

mcarter@birkdalehigh.co.uk

### SENDCO

**Mrs Weir**

jweir@birkdalehigh.co.uk

## Senior Leadership Team

### Behaviour

**Mr Pryor**

dpryor@birkdalehigh.co.uk

### Safeguarding

**Mrs Cassidy**

ccassidy@birkdalehigh.co.uk

### Personal Development

**Mr Marshall**

pmarshall1@birkdalehigh.co.uk

### Data/Examinations

**Mrs Duffy**

hduffy@birkdalehigh.co.uk

### Quality of Education

**Mrs Follett**

cfollett@birkdalehigh.co.uk

### Improving Pupil Outcomes

**Mrs Tipping**

jtipping@birkdalehigh.co.uk





“ Every child deserves a continual investment of guidance and support.”

**Mr Boyce - Inclusion Coordinator**  
bboyce@birkdalehigh.co.uk

“ My door is always open for guidance, support and encouragement in order to help you reach your goals and have a positive school experience.”

**Mrs Nightingale - Learning Mentor**  
snightingale@birkdalehigh.co.uk



# Peer Mentors

## What are Peer Mentors?

Peer mentors are students from year 8 who have applied for, and been successful in being appointed to their role.

They have been specifically chosen and have received training to help them to offer help, support and give guidance to boys in year 7.

Peer Mentors are also role models for younger boys. All our Peer Mentors are approachable, friendly and are always happy to help.

## What can Peer Mentors help with?

Peer Mentors can help your son with lots of things in school such as:

- Finding his way around.
- Talking through concerns about homework.
- Advising him where to go if he has a problem.
- Introducing him to lunchtime clubs he can attend.
- Sharing useful information about school.

## How to recognise a Peer Mentor

Birkdale High School has 42 Peer Mentors. The names and photos of each of the Peer Mentors are displayed on the wall outside the canteen.

Each of our Peer Mentors has a Peer Mentor badge on their blazer and they also wear a slightly different tie.



## Meet our Peer Mentors

Jonah Aldridge  
 Ivan Armstrong  
 Maximilian Aryekhov  
 Hugo Atkinson  
 Joseph Barton  
 Charlie Booth  
 Seb Burke  
 Alfie Christian  
 Tom Clarke  
 Charlie Collins  
 Henry De'Ath  
 Robert Dodd  
 Aaron Edwards  
 Alfie Ellis, Jacob  
 Emmett-Kemp  
 James Eriksen  
 Joshua Gadsby  
 Rocco Garcia  
 Evan Gilchrist  
 George Halsall  
 Sonny Harrison

Connor Hurst  
 George Keary  
 Lucas Law  
 Jacob Luty  
 Lewis Lymath  
 Bobby Mace  
 Ben Maitland  
 Wyatt Mawdsley  
 Lucas Mills  
 Leo Molyneux  
 James Murphy  
 Hugo Rankin  
 Max Rimmer  
 Charlie Roberts  
 Jack Robinson  
 Rupert Rosenthal-Tyms  
 Jaiden Savage  
 Angus Scott  
 Charlie Stevens  
 Kylan Thorp  
 Luke Ward



# Arbor App for home/school communication

Birkdale High School uses an app which is available for parents/carers to ensure communication between the school and home is easier and more effective.

The Arbor App is directly linked to the school's MIS database. This is now our main channel of communication and so we do expect **all** parents and carers to download and use it.

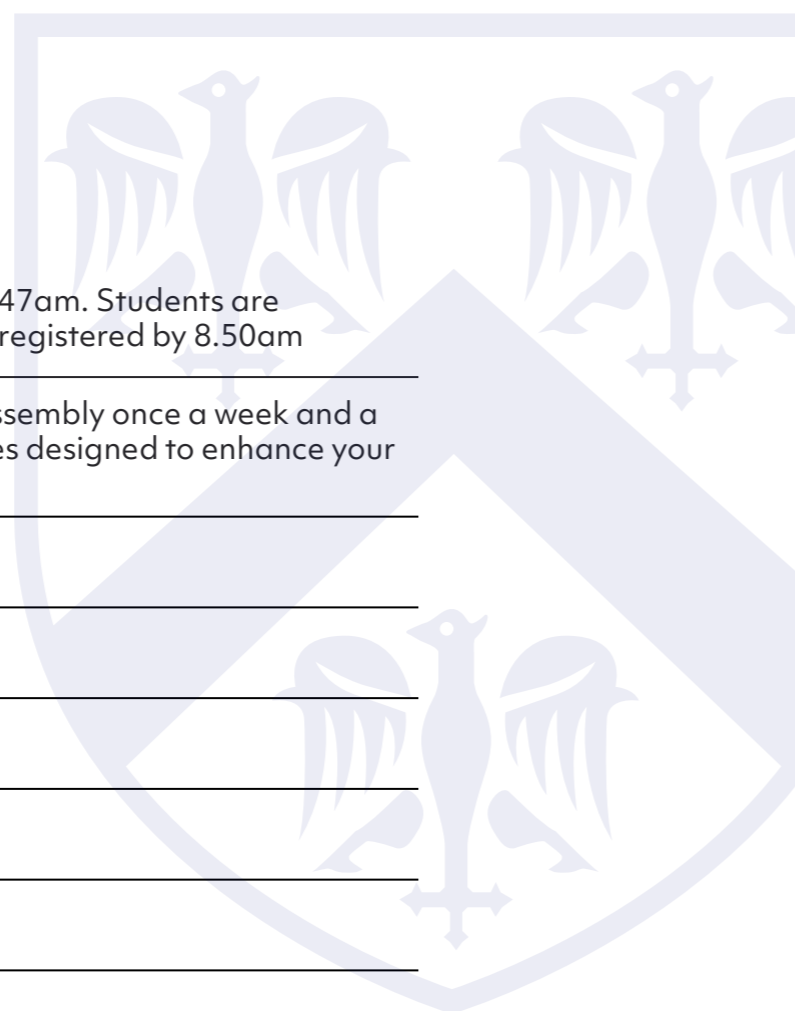
The app is completely free of charge to you and can be installed on your mobile phone or tablet. It currently supports both Apple iOS and Android devices and you'll be able to see a range of information about your son. It is essential you keep the school up to date with any contact detail changes, such as mobile phone, address and email (this can be done via the app).

This will then enable you to access all our apps as detailed in this guide. Once installed and set up you will be able to see some or all of the following information:

- Free messages sent by the school delivered directly to the app
- Attendance and punctuality record
- House Points
- Sanctions records
- Your son's timetable
- Consents
- School calendar

## School day

08:47 — 08:50	The school gates close at 8.47am. Students are expected to be in form and registered by 8.50am
08:50 — 09:10	Registration including an assembly once a week and a range of structured activities designed to enhance your son's education.
09:10 — 10:10	Period 1
10:10 — 11:10	Period 2
11:10 — 11:30	Refreshment Break
11:30 — 12:30	Period 3
12:30 — 13:10	Lunch Break
13:10 — 14:10	Period 4
14:10 — 15:10	Period 5



# Holiday dates 2023/2024

## Autumn Term 2023

Friday 1 <sup>st</sup> September	Professional Development Day (pupils not in school)
Monday 4 <sup>th</sup> September	Year 7 induction
Tuesday 5 <sup>th</sup> September	Term starts for all pupils
Friday 20 <sup>th</sup> October	Half term ends
<b>Monday 23<sup>rd</sup> to Friday 27<sup>th</sup> October</b>	<b>Half term holiday</b>
Monday 30 <sup>th</sup> October	Professional Development Day (pupils not in school)
Tuesday 31 <sup>st</sup> October	Half term starts for all pupils
Friday 24 <sup>th</sup> November	Professional Development Day (pupils not in school)
Thursday 21 <sup>st</sup> December	End of Autumn term
<b>Friday 22<sup>nd</sup> December to Friday 5<sup>th</sup> January 2024</b>	<b>Christmas holiday</b>

## Spring Term 2024

Monday 8 <sup>th</sup> January	Term starts for all pupils
Friday 9 <sup>th</sup> February	Half term ends
<b>Monday 12<sup>th</sup> to Friday 17<sup>th</sup> February</b>	<b>Half Term holiday</b>
Monday 19 <sup>th</sup> February	Professional Development Day (pupils not in school)
Tuesday 20 <sup>th</sup> February	Term starts for all pupils
Thursday 28 <sup>th</sup> March	End of Spring term
<b>Friday 29<sup>th</sup> March to Friday 12<sup>th</sup> April</b>	<b>Easter holiday</b>

## Summer Term 2024

Monday 15 <sup>th</sup> April	Term starts for all pupils
<b>Monday 6<sup>th</sup> May</b>	<b>Bank Holiday</b>
Friday 24 <sup>th</sup> May	Half term ends
<b>Monday 27<sup>th</sup> to Friday 31<sup>st</sup> May</b>	<b>Half term holiday</b>
Monday 3 <sup>rd</sup> June	Half term starts for all pupils
Monday 24 <sup>th</sup> June	Professional Development Day (pupils not in school)
Tuesday 23 <sup>rd</sup> July	End of Summer term



## Key transition dates

We will do everything to ensure that your son's transition to Birkdale High School is as smooth as possible.

We aim for every child to settle quickly and make a confident start to their time with us. We also want to build strong and lasting relationships with all our parents and carers. In order to do so we have a comprehensive programme of activities throughout Year 6 and Year 7. Some take place before your child's start in September and some after:

<b>September &amp; October Year 6</b>	<b>Open Evening and Open Mornings</b> — These are led by the Headteacher (either in small groups or individually). Parents/carers fill in the form and choose Birkdale High School.
<b>March Year 6</b>	Parents/carers and children are told they have been granted a place at Birkdale High School. Birkdale High School contacts parents/carers and sends registration documents to be completed.
<b>May Year 6</b>	Head of Year 7 and SEND coordinator discuss each child with relevant primary staff. Where visits have been allowed they also meet with students. Enhanced transition events take place for those requiring it.
<b>June Year 6</b>	Transition day where students will visit the school and parents/carers will also come into school for a meeting in the evening.
<b>July Year 6</b>	There will also be a coffee morning for those who want a further experience of high school and the SEND coordinator will also be hosting a number of enhanced transition events for those students requiring more time in school.  The school will be hosting a week-long Summer School open to all students in the last week of July. This is free to all pupils in receipt of Pupil Premium.
<b>September Year 7</b>	<b>Start</b> at Birkdale High School.  Students are registered onto the <b>cashless catering</b> system and have their photograph taken. Students spend time with <b>Form Tutor</b> again to go over expectations, timetable, etc. as well as go around the school.  <b>Peer Mentors</b> help in the first few days by taking pupils to lessons so nobody gets lost, or feels lost.  <b>Parental Forum Meeting</b> to give feedback, raise concerns or discuss further improvements.
<b>October Year 7</b>	Keep in Touch Evening with Form Tutors to review transition so far.
<b>February Year 7</b>	Year 7 Interim Progress Report.
<b>April Year 7</b>	Year 7 Parents'/Carers' Evening.
<b>June Year 7</b>	Second Parental Forum Meeting to give feedback, raise concerns or discuss further improvements.
<b>July Year 7</b>	Final Progress Report. End of Year rewards trips.





# Teaching, learning and assessment

## Curriculum at Birkdale High School

At Birkdale High we are leaders in the education of boys and this starts with a clear focus on developing effective teaching pedagogy and not engaging in educational fads or gimmicks. Your son will receive teaching driven by cognitive science and educational research, delivered by an incredibly knowledgeable and experienced body of professionals.

We are proud of the subject knowledge our teachers have and we use the most effective methods for imparting that knowledge on to our students.

Your son's teachers are given the space and support to make positive changes in their teaching in a risk-free environment; we watch each other teach, share best practice and are eager to accept our professional obligation to improve methods of embedding the knowledge your son needs.

We adapt the curriculum to suit the needs of each learner to enable access and achievement for all. We ensure a strong focus on the skills required for the demands of the new GCSE and vocational qualifications and offer a wide range of courses at all levels to prepare students for further study post-16 and beyond.

## Year 7

Birkdale High School offers all Year 7 students a broad range of subjects to develop knowledge and key learning skills.

Students will develop independent learning and thinking skills, be creative and develop resilience through a variety of subjects and topics. Students also learn about personal and social issues which challenge them as young adults in today's society.

Students are taught in mixed ability classes in years 7 and 8 allowing them access to the full curriculum. Students are set for Maths in year 7 and Science in year 8. Students opt for specialised subjects for years 9, 10 and 11.

We operate a two-week timetable in all year groups.

In Year 7 students will study all subjects (with number of periods per fortnight):

- |   |                         |   |                        |
|---|-------------------------|---|------------------------|
|    | Mathematics (7)         |    | Spanish (3)            |
|   | English (7)             |   | Physical Education (4) |
|  | Science (6)             |  | Art (2)                |
|  | History (3)             |  | Drama (1)              |
|  | Geography (3)           |  | Music (2)              |
|  | Religious Education (2) |  | Computing (3)          |
|  | French (3)              |  | Technology (3)         |



## Our Vocabulary Curriculum

We believe that a robust understanding of vocabulary is integral to accessing our curriculum.

All subject leaders have chosen tier two words to align with the units that students will study. Tier two words are choices that are not subject specific but are words that cross over into multiple disciplines. It is often a lack of understanding of these words that can impede reading comprehension.

## Reading matters

Students' reading ages and literacy levels will be monitored throughout their time at Birkdale High School to ensure they have the key skills required in order to access the curriculum and succeed academically.

Anyone who requires additional intervention such as paired reading or phonics interventions will be approached individually.

We have a tutor time reading programme to ensure that all our year 7 boys get to experience being read to from a high quality and engaging

text on a regular basis. Your son will encounter a range of diverse novels across year 7 from the classic "Alice in Wonderland" to the eerie and mysterious "Seven Ghosts".

Asking your son about the book he is currently reading and getting him to summarise it for you will greatly help develop his reading skills and show how much you value the importance of reading too.

## Support your child's reading at home

Five simple ways that you can support your child with their reading:

1. Hear your child read aloud as much as possible.
2. Let them see you reading, whether it's a novel or a newspaper, lead by example!
3. If they enjoy movies or TV shows that are based on books, like Harry Potter or The Maze Runner, encourage them to give the books a try.
4. Try reading the same book they are reading – then you can talk to each other about it.
5. Encourage them to read to younger brothers or sisters.

## The Birkdale 100

At Birkdale we believe that reading is absolutely essential to future success. We really promote reading for pleasure and look to provide as many opportunities for independent reading as possible.

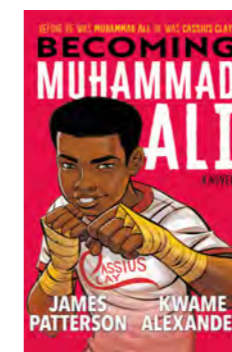
Students in years 7 and 8 have weekly library lessons and are able to borrow books to take home and continue to read. We expect boys to always have a book they are reading. Asking your son what he is currently reading and showing an interest is a great way to support him.

If boys are more reluctant to read, it is often because they have not found the right book for them. We have invested in an array of books that will appeal to our boys, from our very popular graphic novels and verse-form texts to more challenging dystopian series that our boys love.

We have selected 100 texts that we call The Birkdale 100. These are 100 texts that we have carefully chosen that we believe all boys should aim to read by the end of their time at Birkdale. Students can earn bronze, silver and gold badges as they read more of these books.

### Want to get a head start over the summer?

These books are some popular choices from our Birkdale 100.







## Bedrock

Given the centrality of vocabulary development to the Teaching and Learning model we use at Birkdale, and the priority we have given to reducing the word gap, we have introduced the use of the Bedrock Vocabulary platform. Bedrock Vocabulary is a digital vocabulary curriculum that teaches essential Tier 2 words, root words and academic verbs.

Research suggests that as a student progresses through school, they need to be adding at least 3,000 words to their vocabulary per year (Beck, McKeown & Kucan, 2002; Nagy, 1980 & 1986) if they are to keep up with increasingly challenging curriculum texts. Bedrock helps us

to achieve this goal and do all that we can to ensure that all of our boys have the vocabulary they will need to fulfil their goals in life.

Your son is expected to complete a minimum of two lessons per week: one in his library lesson and one at home. Please encourage your son to engage with this fantastic resource. As a parent, you can monitor his progress with the parental access code you will receive at the first parents'/carers' evening.

## How we learn

At Birkdale our Teaching and Learning strategies are developed solely from robust educational research. We fundamentally believe in doing what works, not gimmicks, and by 'works' we mean what brings about a change to long term memory. Nothing has been learnt if it can't be recalled in the near future.

We do not believe in 'learning styles' and instead believe in scaffolding challenging material (through methods such as modelling, guided practice and explicit teaching) so that all boys engage with the big concepts within the curriculum.

## Homework

At Birkdale High School, we believe homework is an essential part of your son's learning and when regularly set and properly done, can add a substantial amount of study time over a five-year school career. It will cement the knowledge acquired in lessons, enhance his understanding and further his progress in each of his subjects, thereby benefiting his overall intellectual development.

Homework will be set in his Google Classroom. You will get your own invitation to join your son's various different Google Classrooms: one per each subject that he studies.

Pupils who complete all their homework to the best of their ability, in full and on time, always make better progress than pupils who struggle to keep up to date with homework.

At each tracking point your son will be awarded a grade from A-D for the completion and standard of homework. He should aim for an A at all times as this will mean he is likely to make the most progress. His overall progress level may also take into account assessed pieces of homework.

Engaging your support in your son's success is vital in helping to create high expectations and providing the basis for developing independent learning skills and habits which will benefit his lifelong learning. Providing time and space for your son to complete homework will support him in achieving his best.



# Assessment

## Why is assessment important?

Assessment plays a fundamental role in learning and is an essential part of the education process. At its heart, it is an interaction between the teacher and student; a way of acknowledging the students' work, identifying what has been learnt and what needs to improve further.

Most importantly, it guides and supports the teacher and students with the next steps in learning. Effective, high-quality assessment can have a very positive impact on students' learning and progress.

At Birkdale, assessments are designed to focus on two areas: knowledge and fluency. We define these two areas as follows:

- **Knowledge:** the ability of students to accurately recall information from their long-term memory.
- **Fluency of Knowledge:** the ability of students to apply and elaborate on pieces of knowledge.

## How and when will my child be assessed?

Your son will be assessed continually throughout the year; however, the frequency and method of assessment will vary between subjects, depending on the nature of the subject and the number of lessons allocated in the timetable.

## There are two main forms of assessment: formative and summative

**Formative assessment** takes place on a day-to-day basis during teaching and learning. It involves teachers using a variety of methods to diagnose specific areas to improve, and supports students in doing so.

The majority of our formative assessment will be verbal, in lessons, through coaching and conversation and via rich, deep questioning, with teachers providing students with instant, live feedback in response to the misconceptions and errors revealed. In addition, formative assessment will also be in the form of tasks, quizzes and regular, low-stakes testing.

**Summative assessment** provides a judgement about what a student has achieved at the end of a period of time, relative to the specific learning aims for that subject. In the majority of subjects, students at Birkdale are assessed more formally, during the internal assessment period, held twice during the school year.

In Years 7 to 9, these assessments will include a separate "knowledge" test to help us identify gaps and misconceptions, and, depending on the subject, may also include a "fluency of knowledge" section, to assess how effectively the students can apply their knowledge in answering complex questions; this may be in the form of an extended written response or problem solving task.

The assessments during Years 10 and 11, will be designed to complement the requirements of the subject specification for the qualification being studied and will incorporate exam style questions. These assessments will summarise attainment at a particular point in time.

At Birkdale High School we believe that, apart from the external examinations, all assessments should have a formative purpose. Our assessments should act as a bridge between our teaching, and the learning we are trying to achieve; checking that students have learnt the knowledge taught to them and whether they have fluency in that knowledge. It is then possible, through analysis of performance in summative assessments, to identify gaps in skills and knowledge, and to use this to inform teaching and learning.

## How will I be informed of the progress of my child?

You will receive two reports during each school year, following each of the internal assessment periods. The reports will contain your son's results in his assessments and details of his current attainment band, for each subject. Information will also be provided regarding his approach to our Routines for Learning, and the quality of his Homework and Presentation.

In addition, at each reporting period, we identify the students with the best Routines for Learning in their year. These students will receive a letter inviting them to a Rewards Breakfast, to celebrate this achievement with their Head of Year. All parents/carers are expected to attend Parents'/Carers' Evenings, where a more detailed face-to-face conversation can take place.

## What if I have concerns about the progress of my child?

The most important way of understanding your son's progress is to discuss it with him. While we will endeavour to provide you with attainment and approach to learning data, it is important to recognise that your son's exercise books and the conversations you have with him and his teachers can provide a far richer understanding of his learning and progress. Should you have any specific concerns, you are always welcome to contact your son's Form Tutor, Head of Year or Subject Teacher by phone or by email.

"Throughout the day corridors are quiet because pupils are working purposefully in their classrooms. Pupils act sensibly and respectfully towards one another during social times"



# Personal development, behaviour and welfare

## Pastoral care

We pride ourselves on providing substantial pastoral support so that your son's time at Birkdale High School is happy and productive. Students are placed into a form and the Form Tutor meets with the students on a daily basis.

**The Form Tutors are therefore the first port of call for students and parents/carers should they have any concerns or issues.**

Likewise, the Form Tutor is also in a position to notice any change in demeanour of the students in their care and provide any support that may be required.

Each year group has a Head of Year. These provide additional support for students as well as making sure that students are gaining the most from their time at Birkdale High School. Attendance, punctuality and behaviour are all monitored very closely so that any early signs that a student may not be working effectively can be identified and acted upon quickly.

More importantly, the Pastoral Team seeks to reinforce the positives and a comprehensive rewards system is in place to promote high standards. The whole of the Pastoral Team is led and managed by an Assistant Headteacher who has specific responsibility for this aspect of the school to ensure that the school provides the best pastoral care for the students at Birkdale High School.

For those students who need specific assistance and support, the school has a Learning Mentor who helps students with issues such as self-esteem and motivation. In addition to this, the school works closely with a number of external agencies to provide more bespoke care if and when required.

## Attendance and punctuality

### What constitutes good attendance?

Attendance percentages are not like examination results; an attendance percentage needs to be in the high 90s, before it can be considered good.

#### Consider the following examples:

- An attendance record of 90% might seem good but is equal to 1 day missed per fortnight. If this continues from Years 7 to 11, a total of 6 months of education will be lost.
- An attendance record of 80% might seem acceptable but is equal to 1 day missed per week. If this continues from Years 7 to 11, a total of one year's education will be lost.

#### In order for an attendance record to be deemed good it must be 96% or above:

- 100% - excellent attendance
- 98% - very good attendance
- 95% - satisfactory attendance

Each year, a significant number of students in every year group achieve 100% attendance records, showing that this is an achievable target.

---

**A first class education requires full attendance.**

---

## Illness and medical appointments

Time off school for illness should only be taken if absolutely necessary. Medical appointments should be taken outside of the school day or during school holidays. When this is not possible, **an appointment card should be brought into school by the student and shown to the main office.**

Please note that without an appointment card absences for appointments will not be authorised, even when parents/carers have contacted the school. Please be aware that where students have a medical or dental appointment during the school day only half a day's absence will be authorised.





## What happens if my son's attendance and punctuality fall below expectations?

Every student's attendance and punctuality is monitored regularly by the Pastoral Team and the school's Engagement and Attendance Coordinator.

Form Tutors will discuss attendance and punctuality concerns with your son in the first instance. If we continue to be concerned by a student's attendance and punctuality record, parents/carers will receive communication from the school outlining the concerns and we may deem it appropriate to invite parents/carers into school to discuss how their child can best be supported. Families may also be visited at home by the Engagement and Attendance Coordinator.

When barriers to good attendance and punctuality exist, it is the responsibility of the parent/carer, together with the school, to work jointly so that these can be overcome. If a student has too many unauthorised absences, and/or is persistently late to school, and all other strategies have failed to improve their attendance, parents/carers may be referred to the Local Authority.

---

**Please consider the unspoken message you are giving your son by letting them think that it is acceptable to miss school.**

---

"As Engagement and Attendance Coordinator, my role is to support whole school attendance, working with staff, students, parents and carers to ensure that the attendance of each individual is the best it can be."

Mrs Murphy - Engagement and Attendance Coordinator  
cmurphy@birkdalehigh.co.uk



## Taking holiday during school time

There are 190 statutory school days in an academic year. **There are 175 days (weekends and school holidays) available for use for holidays!** When students are absent directly before or after a school holiday a member of school staff will conduct a home visit as per the school's safeguarding and attendance policies.

All research shows that excellent attendance at school is essential for a student to achieve their potential. An average two week holiday in school time means your son has 50 lessons of missed work to catch up on as well as all current

work when they return. The Headteacher is unlikely to authorise any holidays for students in school time.

School term time must be used for learning and teaching and holidays taken in term time impact negatively on the students' chances of success. Any pattern of absence of extended days or days linked to the start or the end of a school holiday period will be questioned as a holiday unless medical evidence is provided in writing to support the absence.

The Headteacher does have the discretion to approve compassionate leave of absence from school such as for funerals, or authorise absences in other exceptional or unavoidable circumstances. Any such request must be made in writing to the Headteacher, using the appropriate form available from the school office. Below 95% the school will not authorise any absence except for the most serious or exceptional reason.

---

**Holidays in school time may be less expensive but your son's education is priceless.**

---

## Punctuality

We seek cooperation in ensuring that pupils are punctual for school. All pupils should arrive on time to commence morning and afternoon sessions promptly. Pupils need to be at form no later than 8.50am. Any student arriving to school after the gate has closed will be expected to sign in at the main office and their lateness to school will be recorded.

## School discipline

The school's discipline policy is underpinned by the words :

### Safe — Respectful — Ready

We believe in positive reinforcement and our rewards system is based on this principle. However, the school will not tolerate behaviour which negatively affects the learning environment and we have very clear behaviour expectations that our students must adhere to. All students are expected to follow the Routines for Learning which are displayed in every classroom.

Outside of the classroom students must conduct themselves in an orderly and respectful manner. Behaviour which undermines the school's discipline and/or threatens the wellbeing of themselves or other students will not be tolerated.

Any student who continually disrupts their own learning and the learning of others and/or has little regard for the wellbeing of others or the school's standards will be removed into the exclusion room and parents/carers contacted.

We seek to positively reinforce the high standards that we expect of our students. Students are expected to behave in a manner which allows excellent teaching to take place and exceptional progress to be made.

To provide students with the best opportunity of achieving rewards, systems are in place to monitor house points and sanctions on a daily basis. This is to enable the Pastoral Team to be proactive in addressing any behaviour concerns and ensuring that positive behaviours are encouraged and sustained. At timely points throughout the year parents/carers will be informed about their son's behaviour and attendance record.

Parents/carers can also keep up to date with their son's behaviour and attendance record via the Arbor App on their electronic devices. Students are rewarded in a number of ways, such as house points, chocolate bars, reward breakfasts, certificates sent home or direct contact with parents/carers.



# SEND and learning support

At Birkdale High School, we offer a range of support for your son based on his needs. Mrs Weir is our school SENDCO who is responsible for ensuring any child who has any barriers to learning has the support they need to enjoy and succeed in high school. Mrs Weir, along with Mr Carter, will speak to your son's primary school teacher & SENDCO prior to your son starting in September to make sure we have all the information we need regarding any existing SEND.

She will also meet with you as parents/carers to ensure all teachers at Birkdale High understand your son's needs and how to support him when he starts with us so he will have the best transition possible. This is done by using the transition information received from you as parents/carers and primary schools are asked to make a one page Support Profile to share with our staff prior to your son's start.

When your son starts in September, there will be a Learning Support Assistant attached to his year group who will introduce themselves to your son and answer any questions or concerns he may have. This LSA will support year 7 students in lessons and will also be available before and after school, and also at break and lunchtime again to support your son in any way. Approximately 6 weeks into the school term, Mrs Weir will then invite the parents/carers of any child with SEND into school for a meeting to review how things have gone and put more support in place if necessary.

The Hub is the Learning Support base at Birkdale High School. Mrs Weir, along with our team of Learning Support Assistants, are based in the Hub and are there to help your son throughout his time with us. The Hub is open before and after school for homework support; at lunchtimes it is a quiet, safe space for boys to relax.

**During lesson time, various interventions take place in the Hub.  
Some of the interventions we offer are:**

- Dyslexia specialist tuition and other literacy interventions
- Numeracy interventions
- Mentoring/counselling
- Autism support
- EAL support
- Lego therapy
- Art therapy

Birkdale High School also works closely with Sefton Council's Inclusion Team to provide the best possible support for your son, calling upon outside agencies if needed. Sefton Council's local offer outlines the support you can access as a parent and can be found at:

[www.sefton.gov.uk/localoffer](http://www.sefton.gov.uk/localoffer)

If you have any information to share or concerns about your son's learning or well-being prior to his start with us, please don't hesitate to contact Mrs Weir via email:



**Mrs Weir**

[jweir@birkdalehigh.co.uk](mailto:jweir@birkdalehigh.co.uk)



“Effective support helps pupils with SEND to progress through the same ambitious subject curriculums as their peers.”





## Routines for learning

We believe that having expert teachers who are passionate about their subject and use effective teaching methods does not guarantee the success of our boys; it is just as important that your son has an uninterrupted opportunity to learn. As a parent you will know that not all young people have the very best learning habits - they need to be nurtured and often taught how to respond in a range of situations and when faced with challenges. Young people also need to be guided on how to interact with others.

At Birkdale we support all of our boys to develop the very best learning habits by expecting them to follow our 'Routines for Learning'. These are a set of habits which, when followed, will allow them and their peers to learn in an incredibly focused and positive environment. We want every single lesson to be challenging and every single student to learn so that they will be able to have the most options available to them when leaving us. We appreciate all the support our parents/carers give us in ensuring these routines are followed.

## Rewards and incentives

At each progress tracking point teachers also have to report on students' attitude towards the subject.

The attitude grades are collated and the students demonstrating the best attitude across all of their subjects are invited to a rewards breakfast in recognition of their commitment towards their studies.

**Remember - students have to attend to attain.**

## Attendance

Once every half term, students are awarded certificates for 100% attendance.

## Punctuality

Once every half term, students are awarded certificates for 100% punctuality.

## Half-term rewards

At the end of each half term the behaviour and rewards data is analysed. All students who have 100% attendance, 100% punctuality and have received no sanctions are recognised and rewarded.

## End-of-year trip

At the end of each academic year we invite students to attend a selection of trips. These trips are a way of celebrating the good behaviour, attendance and punctuality of the students. As a result, students have to meet certain criteria to be eligible for an invitation:

- **Attendance** — this must be 95% or above. It is appreciated that some students have medical reasons for not attending school. For these students special consideration is granted.
- **Punctuality** — students must have a punctuality record of 97% or above.
- **House points / sanctions** — students must have a positive balance of merits to sanctions ratio.

## Aspire programme and Period X

We have a huge variety of extra-curricular clubs and activities for pupils to take part in during the school year. Getting involved in as much as possible is really important to enhance a pupil's learning, allowing them to explore new interests and to enjoy the things they love doing the most. These activities are also a great way of making new friends. All of our extra-curricular activities take place during Period X. This is the name we give to before and after school, as well as lunchtime activities.

Some of the activities on offer during Period X include: sports, music, drama, coding, chess, yoga, robotics, science, animals, debating, Christianity & Ethics, Sustainability & the environment, and many more.

Pupils at Birkdale High School are encouraged to take part in the ASPIRE programme. This includes aspects such as character education, enterprise, leadership, work experience, performing and creating.

So, what will you do Xtra?

"Around the school pupils are polite and well mannered. they follow the school routines well."

Ofsted 2022



# The house system

Our school has three houses: Constantine, Turing and Hawking. All students and staff belong to one of these houses throughout their time at Birkdale High School. Being a member of a house is like being part of a really big team within the school. Being an active member of his house is something that we hope your son will be proud of and we make sure that all aspects of school life contribute to the house point system.

This means that not only will his school work and effort in class count, but also taking part in extra curricular activity, charity work, and sporting competitions. When your son receives a house point, he'll not only be building a total for himself, for which he will be rewarded, he'll also be contributing to the house total across the school. Each house will be in competition with the others throughout the school year and in the last week of the year we will announce the winner of the House Cup!

All pupils are asked to wear a house tie as part of their school uniform.

## House points

Class teachers award house points for students' positive contributions to the school community. These may be for classroom based reasons such as a good commitment and dedication to work and homework but they can also be issued for good deeds and helpfulness.

At timely points throughout the year, additional rewards are given out based on the number of house points received. For example, at Christmas time we do the 12 Days of Christmas. For the 12 school days leading up to the Christmas break, a student from each year group with the most house points and no behaviour points is rewarded with a selection box.

# Top ten tips

Below are some tips for students and parents/carers from our current students, parents/carers and teachers. Some are aimed at parents/carers and some from teachers to help him succeed in his new school.

<p><b>1.</b> Remind them to be brave if they're shy, and to chat to peers. Everyone is in the same boat and will be looking for new friends.</p> <p><b>Parent</b></p>	<p><b>2.</b> Make them aware of homework and the increased workload. It's a big leap from having perhaps one piece due the next day to several pieces for many different subjects, all due at different times.</p> <p><b>Teacher</b></p>
<p><b>3.</b> Do your homework on the day it is set, don't leave it till the last minute.</p> <p><b>Student</b></p>	<p><b>4.</b> Make sure they're getting enough sleep. When they hit their teen years, they'll need around 9 hours sleep at night, so it's a good idea to get them into responsible sleeping habits early.</p> <p><b>Teacher</b></p>
<p><b>5.</b> Don't panic if they're not happy at first. It takes time to adjust and make new friends. Remind them it's okay to not know where everything is, and not to have a group of friends immediately — it will happen in time.</p> <p><b>Parent</b></p>	<p><b>6.</b> Use the peer mentors, the ones with the different ties to help you whenever you are a bit stuck.</p> <p><b>Student</b></p>
<p><b>7.</b> Be organised. Have a special box, shelf or drawer, where you keep all the equipment and books you need for school. Pack your bag the night before using your timetable so you know you have got everything you need to start each day well.</p> <p><b>Student</b></p>	<p><b>8.</b> Keep your timetable safe, maybe in the inside pocket of your blazer.</p> <p><b>Student</b></p>
<p><b>9.</b> Check you have everything at the end of each lesson, or you will cost your parents/carers a fortune!</p> <p><b>Student</b></p>	<p><b>10.</b> Embrace and enjoy school, it will be the happiest days of your life, I wish I could come back.</p> <p><b>Ex-Student</b></p>

You may find the following link useful as it is specifically about the transition from primary to secondary school — [www.bbc.com/bitesize/tags/zh4wy9q/starting-secondary-school/1](http://www.bbc.com/bitesize/tags/zh4wy9q/starting-secondary-school/1)





# Practical information

## School uniform

School uniform is a crucial part of life at Birkdale High School and we expect all boys to have and to wear with pride the correct uniform. Our uniform can be purchased new from Monkhouse and Whittakers. Additionally good-quality second-hand uniform can be purchased at a reduced rate from the Uniform Hub at 17A Cambridge Walks, Southport.

All items marked with an asterisk are not branded and can be bought from a wide range of shops.



## General uniform requirements

- Navy blue Birkdale High School blazer with school logo
- Navy blue Birkdale High School jumper with pale blue trim and logo (*optional*)
- White shirt\*
- School tie that corresponds to your house or your position of responsibility
- Conventional black school trousers (*no fashion alternatives*)\*
- Black socks\*
- Plain black conventional school shoes (*no boots, no training shoes, no fashion alternatives*)\*
- Leather or leather-looking, no sports logo (*check website*)
- Students who do not attend school in the correct footwear will be issued pumps for the day

## Outdoor uniform requirements

- Plain black, grey or dark blue school coat (grey reflective strips are allowed)
- No hoodies, fleeces, denims, sweatshirts, leather jackets or other fashion alternatives to be worn on the way to or from school



## School bags

- All school bags must be suitable to carry at least two A4 folders.
- Drawstring bags can be used to carry PE kit only.

## PE uniform requirements

- Navy blue rugby top with school logo (*outdoor*)
- Navy blue polo top with school logo (*indoor*)
- Navy blue shorts with logo
- Navy blue football socks (*outdoor*)
- Plain white sports socks (*indoor*)\*
- Football boots with studs\*
- Shin pads\*
- Gum shield\*
- Trainers with non-marking soles/no black soles\*
- Optional tracksuit

## Jewellery

- Jewellery is not permitted in school at all. Only wristwatches are allowed to be worn.

## Hairstyles

- Extreme hairstyles are not allowed. Hair shaved shorter than a number 2, hair with tramlines, patterns or unnatural colours are all classed as extreme. Long hair must be tied back neatly at all times.

## Equipment requirements

Having the right equipment is paramount if students are to complete work to the highest standards. Students are awarded house points for arriving to school fully equipped. Below is a list of the minimum equipment that each student must have for every lesson:

- Blue, black, red and green pens, highlighter pens, protractor, ruler, pencils, pencil sharpener, eraser, glue stick
- Scientific calculator - Casio FX-85GTX
- A see through pencil case is required for all exams
- Small headphones for use when required in lessons





“We would like to thank everyone at school for improving our son’s confidence. Since he joined Birkdale High his confidence was boosted very quickly, where in primary he had a lack of it.”

Year 7 Parent 2023

At Birkdale High School we believe it is our job to ensure that all our pupils have the opportunity to achieve and be the best that they can be. It is one of our priorities to ensure that any barriers to a successful transition are dealt with. Therefore, if your son is eligible for Pupil Premium funding then we will provide a ‘STARS pack’ that contains the following items:

- Blazer 4 Life\*
- Tie 4 Life\*
- Pencil Case (inc Maths Kit)
- Scientific Calculator

You will be contacted prior to your son’s start so we can collect the information needed to provide you with the pack. If you require further financial assistance in preparing for your son’s start at Birkdale High please do not hesitate to contact us and we will do our best to help.

**\*Our ‘Blazer and Tie 4 Life’ initiative will allow your son the opportunity to request a new blazer or tie (a maximum of three times), as and when he requires a new one throughout his journey at Birkdale High.**

## Mobile phones

Birkdale High School accepts that mobile phones (and other portable devices) are now part of young people’s culture and way of life and can have considerable value, particularly in relation to individual safety.

Whilst having clear benefits for personal safety, they can also present a considerable distraction to students’ learning and engagement. We understand that, for safety reasons, students may wish to carry a mobile phone in order to contact their parents/carers in an emergency whilst travelling to and from school. Mobile phones can, however, lead to safeguarding and well-being concerns such as online bullying, disruption to lessons and inappropriate internet usage. Whilst we acknowledge the importance of mobile phones, phones are not permitted to be used whilst on the school site to ensure that the negative effect they can have is minimised within school.

The students’ use of mobile phones is not permitted during school hours. Mobile phones are expected to be turned off at the school gate and should not be seen or heard whilst students are on school property.

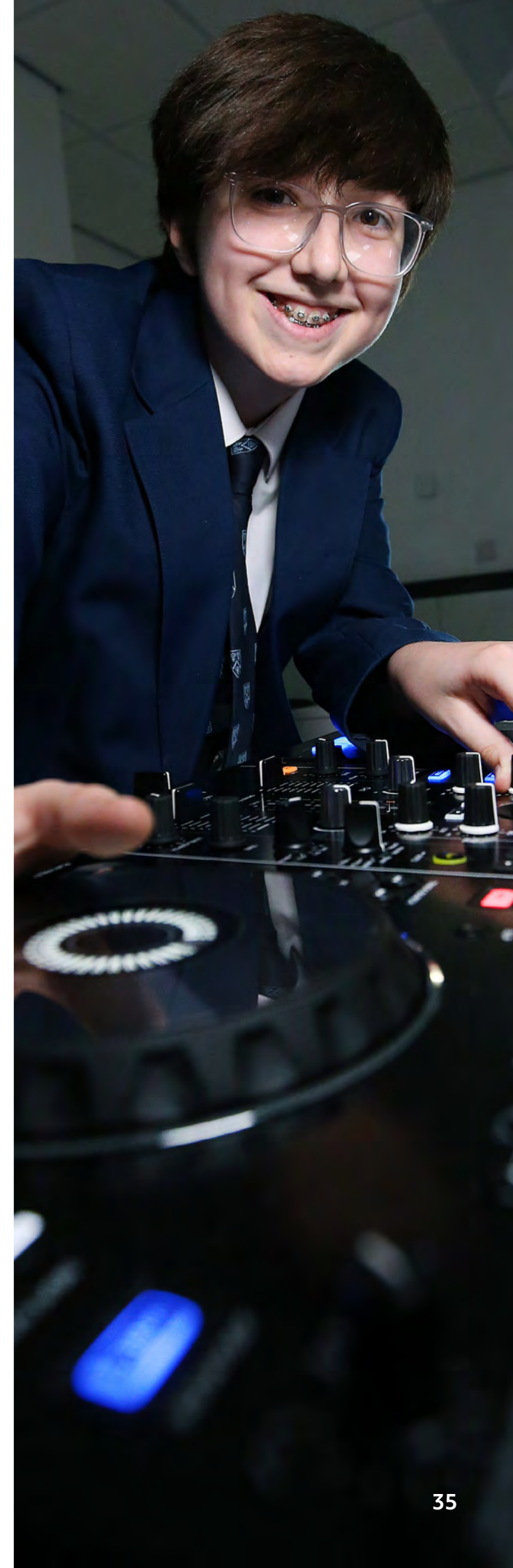
There is no justifiable reason why students should have their phone out at any point during the school day. If students are caught with their phone out during the school day, whether actively using it or not, their phone will be confiscated. If there is an emergency which requires communication with home, students must speak to a member of staff who will deal with the matter.

Likewise, if parents/carers need to contact their son they must do so through the school office.

Whilst phones are not permitted to be used on the school site, we recognise our responsibility to educate students to use their mobile phone responsibly and will work alongside parents/carers in ensuring that students are educated about the appropriate and safe use of mobile technologies.

Education around the use of mobile phones and other such technologies will be delivered via assemblies and personal development lessons with the potential for external presenters as and when appropriate.

Please refer to the Mobile Phone Policy on the school website for greater detail.







## School lockers

Lockers are available for rental by our students and there are two ways of hiring a locker:

### 1. Prefect Lockers Ltd.

These lockers are provided through a school contract with Prefect Lockers who are responsible for booking and administration.

The cost for the academic year is £21 and they can be hired by visiting <https://locker.rentals> and selecting Birkdale High School and following the instructions. You will receive an email with details that will enable your son to set his own locker code on the first day.

### 2. Birkdale High School lockers

These lockers are owned by the school and they will be available to hire, on ParentPay, when the Prefect lockers have all been hired. You will need to pay £20 (plus £5 refundable deposit)

through ParentPay (which includes the cost of two coded padlocks) to secure a locker for the academic year. On your son's first day at school, or when a locker is hired, he will be issued with a locker number and padlock along with details on how to set his own padlock code. If your son loses more than two padlocks during the year a charge will be made for replacements as required.

All lockers need to be locked at all times and it is very important that your son does not disclose his locker or padlock code to anybody else. If this does happen he will need to reset his code immediately.

It is the responsibility of each student to lock and take care of his locker. No perishable items can be stored in the lockers and any valuables stored in the lockers are entirely at the student's risk and will not be covered by the school's insurance policy. All lockers must be fully emptied at the end of the Summer Term in July as any items left in the lockers will be disposed of during the Summer break.

## Cashless catering system

Birkdale High School operates a cashless catering system which provides us with a more efficient, faster and ultimately better service.

This system incorporates the latest technology and eliminates the need for pupils to carry cash throughout the day. It is also biometric so there is no need for pupils to carry a card as the system will recognise the thumbprint of your son at the revaluation pay points and at the tills.

Any amount of money can be paid into a student's account, and any money spent on food and drink will be deducted on a daily basis. We have two payment options available to you – coin/note payments at the revaluation pay-points or online through ParentPay. Pupils will also be given training on how to use this system.

A daily 'spend limit' of £5 will be programmed into the system. This can be increased or decreased for an individual student by making a written request to Mrs L. Bryan, Mellors' Catering Manager at Birkdale High School.

As per current legislation we will be operating an 'Opt In' policy for the biometric system which requires you to complete an authorisation form. If you choose not to have your son registered on the Biometric System a 4 digit PIN Code will be allocated to him. Please note that PIN Codes do not have the same level of security and it will be your son's responsibility to remember the code and keep it secure at all times.

The preference of the school is to use biometrics as this is more secure and faster than any other method of identification.

**Please be assured that this information remains within the school and that the biometric information taken is an algorithm and not the actual finger print.**



# ParentPay

The school accepts online payments from parents/carers for school trips, school meals etc. This is the preferred option for all transactions as it is the most secure. Cash should only be brought into school in exceptional circumstances.

Further information is available at [www.ParentPay.com](http://www.ParentPay.com). Parents/carers will receive an activation email with instructions on how to set up a ParentPay account.

Below is a link that you may find helpful in relation to ParentPay:

<https://www.ParentPay.com/parent-account-faqs/>

# Transport

Birkdale High School is centrally located for various public transport connections and is a couple of minutes' walk from any stop.

- Route X2** Preston to Liverpool
- Route 44** Crossens to Formby
- Routes 46** High Park to Carr Lane
- Routes 46A** High Park to Carr Lane
- Routes 47** Crossens to Liverpool
- Route 49** Crossens to Woodvale
- Route 705** Birkdale High School (Liverpool Road) to High Park via town centre

The 705 is a dedicated school bus and route departing daily from Liverpool Road (end of Windy Harbour Road) at 15.25 and taking the route via Liverpool Road, Sandon Road, Cardigan Road, Clive Road, Dunkirk Road, Blundell Drive, Burlington Road, Crescent Road, Westbourne Road, Westcliffe Road, Lord St West, Albert Road, Cambridge Road, Preston New Road, Rufford Road, Bankfield Lane, Botanic Road, Mill Lane to High Park (Old Park Lane/Roe Lane).

Birkdale High School is less than a ten minute walk from Hillside Train Station which is on the Merseyrail service from Liverpool to Southport.



# School photography

## Using images of children

While your child is attending Birkdale High School we may, from time to time, take photographs or video recordings as records of learning activities or to use as displays, leaflets and booklets about the school or on an official website. This will only be done with the authorisation of the Headteacher. No child will be named in publications or on websites without express agreement from parents/ carers and photographs will only ever show children in a positive way.

In addition, sometimes the press may be invited to photograph or film individual or small groups of children, particularly on occasions to celebrate achievements.

Again this will only take place at the Headteacher's discretion. On such occasions of individual celebration, it is appropriate for names to be requested and the newspaper may choose to publish them. In no circumstances will home addresses or other personal information be provided. Names provided to the media for children in class photographs, will be given in alphabetical order and not correlate to the position of the pupil.

To comply with the Data Protection act 2018, your permission is required for the publication of all photographs of your child for the above mentioned purposes and you are therefore asked to consider signing the consent form that will be sent to you. We assume that this permission will continue for your son's entire school career. Should you change your mind at any point you must let us know in writing. We would like to encourage you to discuss this with your son as soon as possible.

While public recognition for achievement is important, we do understand that you may not wish to authorise the use of photographs of your child. You do not need to give us an explanation for this and we assure you that your wishes will be fully respected. If you wish to discuss this further please do not hesitate to contact the school.





# Home school agreement

So that your son benefits from the education that Birkdale High School has to offer, it is important to establish a strong working partnership between all those involved. We are all partners – Students, Parents/Carers and School – and each of us has a vital part to play by being supportive of each other and committed to the success of the partnership.

## As a community we:

- Have the right to be safe, to be listened to and to be taken seriously as individuals or representative groups.
- Have the responsibility to respond to the views of others courteously and treat each other with respect and tolerance.

## As a parent/carer I agree to:

- Support the school's policies and guidelines regarding behaviour, uniform, and homework.
- Help my son to fulfil his potential by placing value and showing an interest in his school work.
- Take part in discussions about my son's progress at parents'/carers' evenings and, on occasions, at meetings as may be requested by the school or a parent/carer.
- Keep the school informed of any matters that may affect my son's progress, behaviour or wellbeing.
- Ensure my son's full and regular attendance and punctuality, and contact the school on the first day of any absence giving school a reason for the absence.

## Birkdale High School agrees to:

- Value each student as an individual.
- Create a stimulating and safe working environment in which success and effort are rewarded.
- Provide a broad and balanced curriculum that caters for the needs of each boy.
- Seek high academic attainment for each boy as well as the full development of his potential.
- Inform parents/carers at an early stage of any concerns about their son.
- Report to parents/carers twice annually on the progress of their son and at parents'/carers' evenings.
- Keep parents/carers informed about school matters.
- Set, mark and monitor homework as well as feedback to students on how to improve.

## As a student I agree to:

- Work to the best of my ability on all school and homework.
- Behave in a way that doesn't disrupt the learning of others by following the school's rules and guidelines.
- Take pride in my appearance by wearing the school uniform correctly.
- Respect school property and my environment.
- Care for everyone in school and the wider community by showing respect, tolerance and courtesy.

# Testimonials

"It was a pleasure to be shown around your high school today. We were very impressed firstly by Mr Bourgade taking the time to show us around and making our son feel so welcomed and calm. The school has a wonderful calm and caring feel and we were so happy with the subjects on offer, the hub, and the staffing. It was a big step bringing our son today and he came away so happy about Birkdale High and not at all anxious. He skipped into his primary telling his teacher all about his amazing time at Birkdale High."

## Year 6 Parent

---

"I have a son in Year 8 and a son in Year 7 at your school and I just wanted to say how grateful I am for all the support they both receive from their teachers. I cannot thank all the teachers enough for their support and understanding and was hoping you could forward the message on to all of them for me - I was so worried about them both transitioning from primary school to high school with their issues but I just cannot praise Birkdale High enough.

"Our son is a very lucky boy, with highly committed teachers and so through your emails, phone calls and use of the behaviour system, I have a good sense of how he has been before and during his lockdown learning. I know my son is not the easiest student. I take my hat off to you all and I know he's not always been a model pupil over this challenging time but we've seen a marked difference in him this time around. He seems to be maturing. And he seems a lot calmer. This is down to your resilience and determination. So I just wanted to take this opportunity to say thank you to you all."

## Year 8 Parent









NIHIL NISI BONUM



**Mr Gareth Banks — Headteacher**

Birkdale High School  
Windy Harbour Road, Southport PR8 3DT  
T: 01704 577253  
mail@birkdalehigh.co.uk

[www.birkdalehigh.co.uk](http://www.birkdalehigh.co.uk)

Birkdale High School is a partner in Southport Learning Trust  
Southport Learning Trust is a Company Limited by Guarantee Reg No 7790934

