



Safeguarding and Child Protection Policy 2022-2023

To be reviewed September 2023

MISSION STATEMENT

St Austin's Catholic Primary School is a school of faith, achievement, care, quality and opportunity for all. It is a community where we live, love, learn and laugh together in God's presence, promoting Gospel values and the teachings of the Catholic Church.

A place where:

- through our faith and worship, and by living the message of Christ in our community, we will develop partnership between governors, staff, pupils, families and parishes.
- for many, through its clear and visual Catholic identity, Christ and his church are encountered.
- we aim to provide the highest standard of education, where every child matters and where safety, wellbeing, enjoyment, tolerance, respect and dignity are reflected in all aspects of school life.
- all are cherished for who they are as much as for what they achieve, and all achievement is recognised and celebrated.

Vision Statement:

We will work together to develop a school community which encourages each individual to grow in the love of God and of each other.

A community where faithfulness and integrity, dignity and compassion, humility and gentleness, truth and justice, forgiveness and mercy, purity and holiness, tolerance and peace and service and sacrifice are the foundations on which we are invited to build our lives.

A community which puts Christ and the teachings of the Catholic Church at its centre through the development of a worshipping and evangelising community.

Giving respect, compassion and generosity to all.

Cherishing, guiding and developing those entrusted to our care

From



To



Review date September 2023

This policy is available to all, including parents, via the school website.

A staff safeguarding notice board exists in both Staff areas in KS1 & 2

A simple flowchart displayed shows– what to do if you are worried about a student in this school.

All staff have been given a copy of;

- This Policy
- Part one and Annex B of Keeping Children Safe in Education September 2022
- BKCAT Social Media Policy
- BKCAT Code of Conduct
- BKCAT Whistleblowing Policy
- St Austin's behaviour policy
- An understanding of CME (Children Missing in Education) procedures

Inducting new staff – All meet with a member of the DSL team and are given an induction and are guided through the following;

- Who the schools DSL's are and how you contact them.
- How to handle a disclosure from a student?
- What is abuse of position of trust?
- CPOMS
- Current safeguarding issues?
- Where are the blank record of concern forms kept? Where they are then stored/ passed on? Including transition to CPOMS electronic system.
- What to do if you have concerns about another member of staff?
- What mental health support we have in this school.
- How many children in an average classroom have a diagnosable mental health condition.
- What action you would take if you saw a pupil sexually grab another pupil in the corridor.
- What is the Prevent Duty?
- What is FGM?
- What is SVSH?
- What are the timescales for reporting and recording a concern?
- How would you risk manage 1:1 time with a student?
- Have you checked your social media accounts – privacy settings at high? Students cannot access through friends of friends?
- BKCAT Policy Social Media
- BKCAT Code of Conduct
- BKCAT Whistleblowing Policy
- Acceptable Use Policy

**St Austin’s Catholic Primary- A Voluntary Academy
Safeguarding and Child Protection Policy**

Date of publication: September 2022	Review date: September 2023
Contents:	
Policy statement, principles and terminology	
Safeguarding legislation and guidance	
Roles and responsibilities	
Good practice guidelines for staff code of conduct	
Abuse of position of trust	
Children who may be particularly vulnerable	
Emotional Health and Wellbeing: suicide	
Some current issues	
Online Safety	
Helping children to keep themselves safe	
Support for those involved in a child protection issue	
Complaints procedure	
If you have concerns about a colleague or practice	
Allegations against staff	
Staff training and induction	
Safer recruitment	
Site security	
Extended school and off-site arrangements	
Photography and images	
Physical intervention and the use of force	
Intimate care	
E-Safety	
First Aid and supporting children at school with medical conditions	
CHILD PROTECTION PROCEDURES	
Categories and definitions of abuse, Indicators, grooming, Impact, Taking action, Early Intervention, Disclosures, Notifying parents, Records, Referral to social care, Confidentiality and Information sharing	
Key Service Contacts	

Reviewed by:

Designated Safeguarding Lead: John Molyneux

Date: September 2022

Deputy Designated Safeguarding Lead: Susan Scott

Date: September 2022

Deputy Designated Safeguarding Lead: Tom Laurie

Date: September 2022

Deputy Designated Safeguarding Lead: Richard Senior

Date: September 2022

Headteacher: John Molyneux

Date: September 2022

Nominated Governor: Mrs Michelle Selway

Date: September 2022

Policy Statement and Principals

This policy is one of a series in the school's integrated safeguarding portfolios and approach. It will be read alongside any CoViD-19 policy addendums and considered alongside Health and Safety legislative requirements <https://www.gov.uk/government/publications/health-and-safety-advice-for-schools>

Related safeguarding portfolio policies/procedures:

- Bereavement Policy
- GDPR Policy
- Remote Learning Policy
- RSHE Policy
- Supporting Students with a Medical Condition Policy
- Behaviour Policy
- Behaviour Policy – Child-Friendly Version
- Trust Staff Code of Conduct
- Acceptable IT Use Policy
- Educational Visits Policy
- Attendance Policy
- Anti-Bullying Policy
- SEND Policy
- E-Safety Policy
- Missing Children – on and off site – information can be found within Attendance Policy
- Lone Working Advice – information can be found within Staff Handbook
- Photography – information can be found within this Safeguarding Policy
- Transporting Students – information can be found within Staff Code of Conduct document
- Physical intervention and the use of reasonable force – information found within this policy
- First Aid/Sick Children – information found within this policy
- Health and Safety Policy
- Personal and Intimate Care Policy
- Complaints Policy and Procedure
- Whistleblowing Policy
- Safer Recruitment Policy
- Managing Allegations Policy
- Trust Grievance Resolution Policy and Procedure
- Trust Disciplinary Policy and Procedure
- Exclusions Policy
- Bomb Threat, Lockdown and Invacuation Policy

The school's safeguarding arrangements are inspected by Ofsted, Inspecting Safeguarding in early years, education and skills settings. They have been ratified by governors.

Our core safeguarding principles are:

- the school's responsibility to safeguard and promote the welfare of children is of paramount importance
- Safeguarding and promoting the welfare of children is everyone's responsibility. Everyone who comes into contact with children and their families has a role to play
- safer children make more successful learners
- representatives of the school community will be involved in policy development and review
- policies will be reviewed annually unless an incident or new legislation or guidance suggests the need for an interim review.
- The school will work with other agencies and share information appropriately to ensure the safety and wellbeing of our students.
- Actions will be taken in the best interests of the child.

Child protection statement

We recognise our moral and statutory responsibility to safeguard and promote the welfare of all children. We endeavour to provide a safe and welcoming environment where children are respected and valued. We will act quickly and follow our procedures to ensure children receive effective support, protection and justice.

Safeguarding is:

- Protecting children from maltreatment;
- Preventing the impairment of children's mental and physical health or development;
- Ensuring that children grow up in circumstances consistent with the provision of safe and effective care; and
- Taking action to enable all children to have the best outcomes.

Policy principles

- Welfare of the child is paramount; actions will be taken in the child's best interests.
- All children, regardless of age, gender, ability, culture, race, language, religion or sexual identity, have equal rights to protection
- All staff have an equal responsibility to identify children who may benefit from early help to act on any suspicion or allegation that may suggest a child is at risk of harm.
- There is a culture of vigilance, transparency, openness and, if needed, challenge with regards to maintaining high standards in safeguarding.
- Pupils and staff involved in child protection issues will receive appropriate support.

Policy aims

- To provide all staff with the necessary information to enable them to meet their child protection responsibilities.
- To ensure consistent good practice.
- To demonstrate the school's commitment with regard to child protection to pupils, parents and other partners.
- To contribute to the school's safeguarding portfolio.

The procedures contained in this policy apply to all staff and governors and are consistent with those of the:

West Yorkshire Consortium Procedures:

<http://westyorkscb.proceduresonline.com/index.htm>

WSCP Wakefield Safeguarding Children Partnership

<https://www.wakefieldscp.org.uk/>

We will engage locally with Wakefield Safeguarding Children Partnership (which includes the 3 key partners of Police, Local Authority and Health) including taking part in the annual safeguarding audit and training offer.

Equality Act 2010

<https://www.gov.uk/government/publications/equality-act-2010-advice-for-schools>

As a school we welcome our duties under the Equality Act 2010. The general duties are to:

- Eliminate discrimination,
- Advance equality of opportunity
- Foster good relations

We will ensure that those with protected characteristics are not discriminated against and are given equality of opportunity. We recognise, welcome and respect diversity.

We recognise that the recent global CoViD 19 pandemic and other world events have had a

significant and ongoing impact on some of our pupils and increased pressure on our safeguarding staff. It is recognised that Covid lockdowns have been a highly vulnerable time for children and families. We understand that poor behaviour may be a sign of trauma. The school outlines the continued support offered in this policy. During the pandemic we implemented measures (approved by BKCAT and the LA) in school and will do so again if required.

Guidance for Schools Coronavirus;

<https://www.gov.uk/government/collections/guidance-for-schools-coronavirus-covid-19>

St. Austin's is following government guidance around CoViD-19, whilst at the same time promoting good hygiene and allowing individuals to choose to wear PPE above government recommendations.

Research suggests that between 6-19% of school aged children will suffer severe maltreatment, and disabled children are three times more likely to be abused. Three children in an average classroom have a diagnosable mental health condition. Due to their day-to-day contact with pupils, school staff are uniquely placed to observe changes in children's behaviour and the outward signs of abuse and mental health concerns. Children may also turn to a trusted adult in school when they are in distress or at risk. It is vital that school staff are alert to the signs of abuse, both inside (e.g. bullying or staff grooming behaviours) and outside the school and understand the procedures for reporting their concerns. We will create an open transparent culture and environment where staff and students feel safe and can raise any issues. Staff will be supported to be professionally curious with regards to safeguarding matters and to use a restorative approach when working with children, families or other agencies. The school will act on identified concerns and provide early help, or support others to do so, to prevent concerns from escalating.

Terminology

- **Child/Children:** includes everyone under the age of 18.
- **Safeguarding:** Protecting children from maltreatment. Preventing the impairment of their **mental** and physical health or development, Ensuring that they grow up in circumstances consistent with the provision of safe and effective care, Taking action to enable the best outcomes.
- **Child protection:** refers to the processes undertaken to protect children who have been identified as suffering, or being at risk of suffering significant harm.
- **Early Help:** providing support as soon as a problem emerges at any point in a child's life, from the foundation years through to the teenage years. It is about providing support quickly whenever difficulties emerge to reduce the impact of problems.
- **Early help Assessment:** All Early help assessments offer a basis for early identification of children's additional needs, the sharing of this information between organisations and the coordination of service provision. Early help assessments require consent and should identify what help the child and family require to prevent needs escalating to a point where intervention would be needed via a statutory assessment under the Children Act 1989. The findings from early help assessments may give rise to concerns about the child's safety and welfare. In these circumstances, it should be used to support a Referral to Children's Social Care: however this is not a pre-requisite for making a referral in emergency circumstances. **CAF** – Common Assessment Framework is one form of early help inter-agency assessment. Signs of Safety -3 column and scaling is another example. Any Early help assessment can be used in Wakefield.
- **EIP Service:** Early Intervention and Prevention Service
- **TAC/F/S/EY:** Team around Child/Family/School/Early Years
- **Staff:** refers to all those working for or on behalf of the school, full time or part time, temporary or permanent, in either a paid or voluntary capacity.
- **Parent:** refers to birth parents and other adults who are in a parenting/carer role, for example step-parents, foster carers and adoptive parents.
- **LADO:** Local Authority Designated Officer a post in the local authority, to coordinate and manage allegations against staff.
- **Social Care MASH:** Wakefield's children social care/Family services/Integrated Front Door/Multi Agency Safeguarding Hub
- **CAMHS:** Child and Adolescent Mental Health Service
- **WSCP:** Wakefield Safeguarding Children Partnership. This has replaced WDCB Wakefield District Safeguarding Children Board.
- **Signs Of Safety:** an approach to family intervention work, used across the Continuum of Need. This has been incorporated into
- **Wakefield Families Together – Connecting Practice Approach** now used in Wakefield.
- **Restorative Approach:** using language and skills to reduce conflict and foster relationships in order to help people reach sustainable solutions to problems. This is the overarching aim of any work and training in Wakefield district.
- **Continuum of Need:** outlines the different levels of support for children and families in Wakefield District.
- **DSL:** Designated Safeguarding Lead. School will have a team of at least two DSL's.
- **FIM:** Future in Mind. Program to help in promoting, protecting and improving our children and young people's mental health and wellbeing
- **MARF:** Multi Agency Referral Form used in Wakefield District
- **ACES:** Adverse Childhood Experiences
- **CiC:** Child In Care
- **KCSIE:** Keeping Children Safe in Education -Statutory guidance

Safeguarding Legislation and Guidance

The Children Act 1989 and 2004

Provides the overarching framework for care and protection of children.

Education Act 2002

Section 175 of the Education Act 2002 requires local education authorities and the governors of maintained schools and further education (FE) colleges to make arrangements to ensure that their functions are carried out with a view to safeguarding and promoting the welfare of children.

Education (Independent Schools Standards) Regulations 2014 require independent schools to have arrangements to safeguard and promote the welfare of children who are pupils at the school. The same applies through the Non Maintained Special Schools (England) Regulations 2015 and the Apprenticeships, Skills, Children and Learning Act 2009.

Working Together to Safeguarding Children (2018) covers the legislative requirements and expectations on all services working with children to safeguard and promote the welfare of Children. The safeguarding Partners of Health, Police and Local Authority will make arrangements for education to be fully engaged in their local area arrangements.

<https://www.gov.uk/government/publications/working-together-to-safeguard-children--2>

Keeping Children Safe in Education (2022)

Schools and colleges must have regard to this guidance when carrying out their duties to safeguard and promote the welfare of children. This publication now includes guidance on Sexual Violence and Sexual Harassment between children in schools and colleges ([view guidance](#))

All staff should read Part One and Annex B (or Annex A for those not working directly with students) and staff can find a copy on safeguarding notice boards in each staffroom.

Prevent Duty Guidance – England and Wales

Covers the duty of schools and other providers in section 29 Counter Terrorism and Security Act 2015, to have due regard to the need to prevent people being drawn into terrorism.

<https://www.gov.uk/government/publications/prevent-duty-guidance>

<https://www.gov.uk/government/publications/protecting-children-from-radicalisation-the-prevent-duty>

Teaching Standards

The Teacher Standards 2012 state that teachers, including head teachers should safeguarding children's wellbeing and maintain public trust in the teaching profession as part of their professional duties.

Counter Terrorism and Security Act 2015,

Section 26 Applies to schools and other providers;

To have due regard to the need to prevent people being drawn into terrorism.

Serious Crime Act 2015

Includes the mandatory reporting of FGM.

Equality Act 2010

Schools/Colleges must not unlawfully discriminate against pupils because of their sex, race, disability, religion or belief, gender reassignment, pregnancy and maternity or sexual orientation (protected characteristics) and within this the Public Sector Equality Duty (PSED) – for state funded schools/colleges. [Equality Act 2010: advice for schools - GOV.UK \(www.gov.uk\)](#)

Sexual Violence and Sexual Harassment between children in schools and colleges;

[Sexual violence and sexual harassment between children in schools and colleges - GOV.UK \(www.gov.uk\)](https://www.gov.uk/government/publications/sexual-violence-and-sexual-harassment-between-children-in-schools-and-colleges)

Supporting students wellbeing

<https://www.gov.uk/guidance/supporting-pupils-wellbeing>

Parental Advice supporting wellbeing

<https://www.gov.uk/government/publications/covid-19-guidance-on-supporting-children-and-young-peoples-mental-health-and-wellbeing>

Safeguarding and remote education

<https://www.gov.uk/guidance/safeguarding-and-remote-education-during-coronavirus-covid-19>

Implementing protective measures in educational settings

<https://www.gov.uk/government/publications/coronavirus-covid-19-implementing-protective-measures-in-education-and-childcare-settings>

Roles and Responsibilities

Key personnel

(this information is displayed around school on DSL posters as well as the staff and pupil homepages on digital devices)

The Designated Safeguarding Lead (DSL) and Headteacher is **Mr. J. Molyneux** (headteacher@sa.bkcat.co.uk)

The Deputy Designated Safeguarding Leads (Dep. DSL) are: **Mrs S. Scott, Mr. T. Laurie & Mr. R. Senior** (dsl@sa.bkcat.co.uk)

The Senior Mental Health lead is **Mr. T. Laurie** (tlaurie@sa.bkcat.co.uk)

The RHSE lead is **Mrs S. Mills** (mills@sa.bkcat.co.uk) until October and then **Miss F. Tickle** (tickle@sa.bkcat.co.uk) from Oct 2022 to Sep 2023

The designated teacher for LAC is **Mr. R. Senior** (senior@sa.bkcat.co.uk)

The Safeguarding Academy Council Member is **Mrs. M. Sellway** (selway@sa.bkcat.co.uk)

The Chair of the Academy Council is **Mrs. M. Sellway** (selway@sa.bkcat.co.uk)

All of these key personnel can be contacted using the school telephone number: **01924 339435**

The school has a dedicated Safeguarding number (01924 654028) which rings the DSLs mobile phone numbers, in turn. This number must only be used for safeguarding matters and not for general school business.

All staff have a responsibility for Safeguarding no matter what their role. These are outlined clearly in Part One of Keeping Children Safe in Education 2021 issued to all staff and governors.

We will ensure that an appropriate senior member of staff, from the school or college leadership team, is appointed to the role of designated safeguarding lead. The designated safeguarding lead will take lead responsibility for safeguarding and child protection (including online safety). This will be explicit in the role holder's job description. We recognise this role carries a significant level of responsibility and they will have the appropriate status and authority within the school to carry out the duties of

the post. They will be given the time, funding, training, resources and support to provide advice and support to other staff on child welfare and child protection matters, to take part in strategy discussions and inter-agency meetings, and/or to support other staff to do so, and to contribute to the assessment of children.

Voice of the child

We will always seek and record the voice of the child within our CPOMS system (CPOMS incident forms have a dedicated “Child’s Voice” box) and take this into consideration when taking decisions. However, there may be circumstances where we override the student’s wishes and feelings to act in their best interests.

Equality and Diversity

All members of the school staff and governing body will uphold the ethos of the Equality Act and any prejudicial related incidents will be recorded and actioned immediately.

Deputy designated safeguarding leads

Any deputies will be trained to the same standard as the designated safeguarding lead and the role will be explicit in their job description.

Whilst the activities of the designated safeguarding lead can be delegated to appropriately trained deputies, the ultimate **lead responsibility** for child protection, as set out, remains with the designated safeguarding lead, this **lead responsibility** should not be delegated.

Availability

During term time, the designated safeguarding lead (or a deputy) will always be available (during school or college hours) for staff in the school or college to discuss any safeguarding concerns. Whilst generally we would hope that the DSL was available in person, on occasion, phone or virtual calling may be appropriate.

We will arrange adequate and appropriate DSL cover for any out of hours/out of term activities.

DSL responsibilities:

For full description of the role of the DSL please see [Keeping children safe in education 2022](#) - Annex C

Leaders and governors recognise the large and emotionally intense role the DSL is and provide support to the team via Mr. K. Holden or Mrs. M. Collins-Donnelly (externally sourced), having regular debriefing sessions and supervision (where appropriate) from our school CBT counsellor, **Mr. K. Holden.**

Full responsibilities of governors and senior leaders are set out in Part 2 of KCSIE [Keeping children safe in education 2022 \(publishing.service.gov.uk\)](#)

The Governing Body and Headteacher ensures that the school complies by addressing all aspects of KCSIE 2022

Governors will receive safeguarding updates from the DSL team half-termly, and sign off the full self-assessment safeguarding audit.

Good Practice Guidelines and Staff Code of Conduct

To meet and maintain our responsibilities towards pupils we need to agree standards of good practice which form a code of conduct for all staff. Good practice includes:

- treating all pupils with respect
- being alert to changes in pupils' behaviour and to signs of abuse and neglect and recognising that challenging behaviour/Mental Health issues may be an indicator of abuse
- setting a good example by conducting ourselves appropriately, including online.
- involving pupils in decisions that affect them
- encouraging positive, respectful and safe behaviour among pupils including always challenging inappropriate, sexual or discriminatory language or behaviour.
- avoiding behaviour or language which could be seen as favouring pupils or being overly familiar.
- avoiding any behaviour which could lead to suspicions of anything other than a professional relationship with pupils.
- avoiding taking photos of pupils on personal mobile phones.
- reading and understanding the school's Safeguarding policy and guidance documents on wider safeguarding issues, for example bullying, behaviour, missing education and appropriate IT/social media use.
- asking the pupil's permission before initiating physical contact, such as assisting with dressing, physical support during PE or administering first aid
- maintaining appropriate standards of conversation and interaction with and between pupils.
- avoiding the use of sexualised or derogatory language, even as a joke.
- being clear on professional boundaries and conduct with other staff when pupils are present.
- being aware that the personal, family circumstances and lifestyles of some pupils lead to an increased risk of abuse
- applying the use of reasonable force only as a last resort and in compliance with school procedures
- dealing with student infatuations in an open and transparent way e.g. informing the correct managers and managing the situation in a way which is sensitive to the feelings of the student.
- referring all concerns about a pupil's safety and welfare to a DSL, or, if necessary directly to police or children's social care
- following the school's rules with regard to communication with pupils and use of social media and online networking
- avoiding unnecessary time alone with pupils and risk manage any time alone or 1:1 working.
- avoiding sharing excessive personal information with pupils.

Transporting Students

In general staff will not transport students in their own vehicles. If it is necessary, staff will ensure this is agreed and recorded and that they have business insurance, ensure the student(s) is/are in the back seat wearing a seatbelt and that other staff and parents are informed of departure and estimated arrival times.

All of our staff are reminded of codes of conduct and safer working practice though specific 2 yearly training and regular reminders from the headteacher which incorporates Safer Working Practices in Education guidance 2022 [Home \(saferrecruitmentconsortium.org\)](https://www.saferrecruitmentconsortium.org)

Abuse of Position of Trust

All school staff are aware that inappropriate behaviour towards pupils is unacceptable and that their conduct towards pupils must be beyond reproach. Disciplinary action can be taken if professional standards are not upheld.

In addition, staff should understand that, under the Sexual Offences Act 2003, it is an offence for a person over the age of 18 to have a sexual relationship with a person under the age of 18, where that person is in a position of trust, even if the relationship is consensual. This means that any sexual activity between a member of the school staff and a pupil under 18 may be a criminal offence, even

if that pupil is over the age of consent.

(BKCAT has developed their own staff and governor code of conduct which reflects the school's values and ethos – additionally a use of social media, position of trust and dealing with infatuations policy)

Children Who May Be Particularly Vulnerable

Some children may have an increased risk of abuse. It is important to understand that this increase in risk is due more to societal attitudes and assumptions, and child protection procedures that fail to acknowledge children's diverse circumstances, rather than the individual child's personality, impairment or circumstances. Many factors can contribute to an increase in risk, including prejudice and discrimination, isolation, social exclusion, communication issues and reluctance on the part of some adults to accept that abuse can occur.

To ensure that all of our pupils receive equal protection, we will give special consideration to children who are:

disabled or have special educational needs

SEND/Young Carers

Children who need a social worker

Children in Care/those recently returned to family from care

Children persistently absent from education (Children Missing Education CME)

Electively Home Educated

privately fostered

LGBT (lesbian gay bisexual trans)

asylum seekers

living transient lifestyles

do not have English as a first language

affected by domestic abuse

substance misuse/drug use

affected by mental health issues including self-harm and eating disorders

affected by poor parenting/parents affected with mental health issues

at risk of Fabricated or Induced Illness or perplexing presentations

taking part in anti-social behaviour or at risk of gang and youth violence

at risk of exclusion due to behaviour that may be trauma related

living away from home

vulnerable to being bullied, or engaging in bullying including cyber, homophobic, racist etc.

missing from home or care

living in chaotic and unsupportive home situation

vulnerable to discrimination and maltreatment on the grounds of race, ethnicity, religion, disability or sexuality

vulnerable to extremism or radicalisation

vulnerable to faith abuse

involved directly or indirectly in child sexual exploitation CSE, CCE or trafficking

at risk of Honour Based Violence/Abuse (HBV/A) including female genital mutilation (FGM) ,forced marriage and breast ironing.

This list provides examples of additional vulnerable groups and is not exhaustive.

SEND Pupils

We know disabled children are 3-4 times more likely to suffer abuse than those without disabilities. Our school staff are alert to this and the additional barriers that can exist when recognising abuse and neglect in this group of children:

- The potential for children with SEND or certain medical conditions being disproportionately impacted by behaviours such as bullying, without outwardly showing any signs
- Assumptions that indicators of possible abuse such as behaviour, mood and injury relate to the child's condition or disability without further exploration
- Children with SEND being more prone to peer group isolation or bullying (including prejudice-based bullying) than other children
- Communication barriers and difficulties in managing or reporting these challenges

We work to address these additional challenges and consider the extra time and specific support required to allow these children to communicate effectively. Extra consideration will be given if using restraint and the impact this can have for children and young people experiencing abuse

How Wakefield supports SEND students is set out on the Local Offer website:

<http://wakefield.mylocaloffer.org/Home>

Children with a social worker

We recognise these children are highly likely to have suffered trauma. DSLs will promote educational outcomes of this group by appropriately sharing information about the welfare, safeguarding and child protection issues that this group of children are experiencing, or have experienced, with teachers and school and college leadership staff. DSL's will ensure staff, know who these children are, understand their academic progress attendance and attainment and maintain a culture of high aspirations for this cohort; supporting teaching staff to identify the challenges that children in this group might face due to their adverse childhood experiences ACES and the additional academic support and adjustments that they could make to best support these children.

Emotional health and Wellbeing

Mental health is a state of wellbeing in which every individual realises his or her own potential, can cope with the normal stresses of life, can work productively and fruitfully, and is able to make a contribution to her or his community. (World Health Organisation)

In an average classroom, 5 students will be suffering from a diagnosable mental health condition. In addition to this it is likely that many more pupils will be struggling with their emotional wellbeing.

All staff are aware that mental health problems can, in some cases, be an indicator that a child has suffered or is suffering abuse. Only appropriately trained professionals can diagnose mental health problems but staff in school are well placed to identify early signs that may suggest an issue.

If staff have concerns about the mental health of a pupil they will speak to relevant staff within the

school including, if necessary, the DSL. If a student presents with a medical emergency then this is actioned immediately. Where a CAMHS referral is necessary then this is managed by the Pastoral Team.

Our mental health leads are **Mr. T. Laurie**, supported by **Mr. R. Senior**

We understand the key messages below:

- Behaviour is communication
- A significant, trusted adult in school is key. Professional relationships are vital.
- Interaction can be an intervention.
- Staff wellbeing is essential as a priority to supporting students, parents, carers and colleagues.

If individual care plans are required this should be drawn up involving the pupil, the parents and relevant health professionals. This can include:

- Details of a pupil's condition
- Special requirements and precautions
- Medication and any side effects
- What to do and who to contact in an emergency
- The role the school can play

We understand the impact that the global pandemic of coronavirus and other national and world events will have on our staff and students. At our school, we aim to promote positive mental health for every member of our staff and student body as well as respond to mental ill health. We will ensure emotional support is provided especially during stressful times e.g. exams, times of transitions or when a critical incident occurs.

Possible warning signs of mental health issues can include:

- Physical signs of harm that are repeated or appear non-accidental
- Changes in eating or sleeping habits
- Increased isolation from friends or family, becoming socially withdrawn
- Changes in activity and mood
- Unexplained changes in academic achievement
- Discussing or joking about self-harm or suicide
- Substance misuse and/or engaging in risk taking behaviour
- Expressing feelings of failure and/or hopelessness
- Changes in clothing – e.g. long sleeves in warm weather, wearing baggy clothes, looking unkempt or spending a disproportionate amount of time on appearance.
- Secretive behaviour
- Avoiding PE and /or communal changing
- Repeated lateness or absence from school without obvious explanation
- Repeated physical pain, nausea and other physical symptoms with no evident cause

This list is not exhaustive which is why as a school we invest in relationships with our students and being able to recognise, even small changes, in their individual behaviour and presentations.

We understand that taking a listening and empathetic approach is important when talking to students about their mental health issues and we have a school culture that follows a whole school approach to mental health and wellbeing.

Listening and better understanding the circumstances and student's view may be initially what is needed rather than immediate advice or direction. If there are safeguarding concerns a discussion with the DSL and the Mental Health Support Lead/Designated Mental Health lead and appropriate next steps will be taken to ensure safeguarding of the student.

We do this by recognising the importance of emotional health and wellbeing for all our students and we support this through Pastoral care, referrals to Catholic Care, Future in Mind, Collins-Donnelley Consultancy and RHSE lessons in school.

Students are encouraged to access local support via WF-I-Can website: [Homepage - WF-I-Can](#)

We have available: Wakefield Resilience framework to build resilience in our students.
<https://www.riskandresilience.org.uk/>

As well as embedding this into our curriculum through for example: Statements/Virtues to live by, Circle time, Christian Meditation, Daily 1K, singing, "Time to Talk" boxes, RSHE, digital contact form for pupils and RE.

Students are encouraged to access local support via WF-I-Can website: <https://wf-i-can.co.uk>

As well as embedding the following into our curriculum:

- Promoting and supporting mental health and wellbeing in schools (www.gov.uk)
- <https://youngminds.org.uk/youngminds-professionals>
- <https://www.selfharm.co.uk>
- <https://www.beateatingdisorders.org.uk/types/do-i-have-an-eating-disorder>
- <https://www.gov.uk/government/publications/mental-health-and-behaviour-in-schools--2>
- <https://www.gov.uk/childcare-parenting/mental-health-of-children-and-young-people>
- <https://www.pshe-association.org.uk/curriculum-and-resources/resources>
- <https://www.nspcc.co.uk>
- [Supporting pupils with medical conditions at school - GOV.UK](#)
- [Promoting and supporting mental health and wellbeing in schools and colleges - GOV.UK](#)
- [Mental health and behaviour in schools - GOV.UK \(www.gov.uk\)](#)

Suicide

We recognise that suicide is one of the biggest killers of children and young people in the UK. We are working towards the national guidance document 'Building a Suicide Safer School/College' by Papyrus; advice on policy, prevention, postvention etc. Sadly, it is always a possibility that a school or college may have to face dealing with a suspected suicide of a young person or staff member.

We have issued all of our staff with Wakefield Public Health '[Supporting a young person with suicidal thoughts](#)'. Which provides staff with practical tips on how to talk to young people about suicide.

Samaritans step by step guide responding to a suicide <https://www.samaritans.org/how-we-can-help/schools/step-step/step-step-resources/>

To request support:

Email stepbystep@samaritans.org

Call 0808 168 2528

The Step by Step service will help manage an effective and safe response, support staff and the student community to prepare for, respond to and recover from a suspected suicide.

We are working towards the national guidance document '[Building a Suicide Safer School/College](#)' by Papyrus; advice on policy, prevention, postvention etc.

- [Wakefield suicide prevention strategy](#)

If a serious incident happens involving one of our pupils we will immediately inform the Local Authority by contacting Social Care/MASH (0345 8 503 503).

Additional information can be found in our Bereavement Policy which can be found on our website: [BKCAT Bereavement Policy](#) .

Managing a sudden death in the school community; [Rebuilding Lives Together \(lgfl.org.uk\)](https://www.lgfl.org.uk)

Sexual Violence and Sexual Harassment (SVSH) & other Current Issues

There are many issues of concern affecting children today and not all can be listed here. For a guidance and further resources/links list, see Part 1 and Annex B in Keeping Children Safe in Education. [Keeping children safe in education - GOV.UK \(www.gov.uk\)](#) The issues are often complex and overlap. For resources on a wide range of safeguarding topics locally [Schools & Colleges • Wakefield Safeguarding Children \(wakefieldscp.org.uk\)](#)

We will have a consistent approach of following a robust sequential RSHE program to educate our students about these issues, following our procedures and consulting with other agencies if there are any concerns.

When to report to police

The following guidance will be followed: [Click here](#)

We also understand that if police are talking to a student, because they suspect them of a crime, the child must have an appropriate adult present e.g. parent/

Online safety is exceptionally important and will continue to receive a high priority as an issue, as it is often how issues are facilitated such as sexual harassment, CCE, CSE, radicalisation, bullying etc. Appropriate filters and monitoring are in place, as well as education of staff and pupils. See later section.

Children will often not feel ready or able to tell someone about the abuse, we work hard to build trusting and safe relationships with all of our pupils and all staff are encouraged to be professionally curious if they suspect safeguarding issues.

Peer on Peer/Child on Child Abuse – sharing nudes & semi nudes/bullying/racism/sexual assaults/physical assault/hazing or initiating

Child on child abuse, will always be taken seriously and swiftly acted upon, under the appropriate policy e.g. safeguarding, behaviour, bullying and a risk assessment completed as required. Students will be encouraged to report any concerns freely. There are posters around school encouraging children to tell a trusted adult in or out of school and contact numbers and details for external agencies.

It will not be dismissed as ‘banter’ or ‘part of growing up’. All staff are trained to respond to inappropriate comments etc. These issues will be part of RHSE lessons and discussions. Victims will be supported through the school’s pastoral system. Both inside and outside school as well as online incidents will be responded to appropriately. Students are encouraged to report any concerns using the “Time to Talk” boxes, digital pupil referral form, by speaking to a trusted adult in school or, by contacting the NSPCC’s Report Abuse in Education Helpline 0800 136 663. We will record on CPOMS.

Sexual Violence and Harassment

Sexual violence and sexual harassment can occur between two children of any age and sex, from primary through to secondary stage and into colleges. It can occur through a group of children sexually assaulting or sexually harassing a single child or group of children. Sexual violence and sexual harassment exist on a continuum and may overlap; they can occur online and face to face (both physically and verbally) and are never acceptable.

Like with all safeguarding issues our staff will recognise that ‘it could happen here’ and be vigilant to signs and indicators that a student could be suffering.

Addressing inappropriate behaviour (even if it appears to be relatively innocuous) can be an important intervention that helps prevent problematic, abusive and/or violent behaviour in the future. Girls are especially vulnerable to this type of abuse.

Sexual Violence includes rape, assault by penetration and sexual assault.

Sexual Harassment is unwanted conduct of a sexual nature and can include lewd comments/sexual jokes, physical behaviour e.g. showing sexual pictures, deliberately touching/brushing up against someone, online sexual harassment, upskirting.

we will;

- adopt the ‘it could happen here’ mindset and never tolerate or normalise this behaviour and are very clear it is not an inevitable part of growing up;
- not tolerate or dismiss sexual violence or sexual harassment as “banter”, “part of growing up”, “just having a laugh” or “boys being boys”;
- challenge behaviour (potentially criminal in nature), such as grabbing bottoms, breasts and genitalia and flicking bras/pulling down trousers and lifting up skirts.
- understand that all of the above can be driven by wider societal factors beyond the school and college, such as everyday sexist stereotypes and everyday sexist language.
- ensure this is addressed through our sequential RHSE program.
- ensure all incidents are recorded and acted upon swiftly.

Consent is about having the freedom and capacity to choose. Consent can be withdrawn at anytime.

We recognise children with Special Educational Needs and Disabilities (SEND) are three times more likely to be abused than their peers. Additional barriers can sometimes exist when recognising abuse in SEND children. These can include:

- assumptions that indicators of possible abuse such as behaviour, mood and injury relate to the child’s disability without further exploration;
- the potential for children with SEND being disproportionately impacted by behaviours such as bullying and harassment, without outwardly showing any signs; and
- communication barriers and difficulties overcoming these barriers.

Therefore any reports of abuse involving children with SEND will involve liaison with the Designated Safeguarding Lead (or deputy) and the SENCO

Children who are lesbian, gay, bi, or trans (LGBT) can be targeted by their peers. In some cases, a child who is perceived by their peers to be LGBT (whether they are or not) can be just as vulnerable as children who identify as LGBT. St Austin’s has a robust, diocesan approved RHSE scheme and children are regularly taught to treat others with respect regardless of a person’s colour, sexual orientation or beliefs, and regularly remind all children that we are all equal in the eyes of God.

We will follow outlined guidance on any cases of sexual violence and harassment between our students outlined in Part 5 of Keeping Children Safe in Education.

<https://www.gov.uk/government/publications/sexual-violence-and-sexual-harassment-between-children-in-schools-and-colleges>

Victims will never be blamed or made to feel ashamed for coming forward. We will ensure support for the alleged perpetrator as well as the alleged victim throughout the process. Support can run alongside any sanctions for perpetrator as we realise perpetrators may be victims themselves. (we are aware that the term victim and perpetrator may not be how children identify themselves and will be considerate of this especially when talking to students/parents)

We will seek advice from other agencies such as police or social care if the case is above early help or internal management.

Students are encouraged to report any concerns using the “Time to Talk” boxes, digital pupil referral form, by speaking to a trusted adult in school or, by contacting the NSPCC’s Report Abuse in Education Helpline 0800 136 663. We will record on CPOMS.

Any incidents of sexual violence will be reported to police. If police then interview a student we understand the requirement for an Appropriate Adult to be present, parent etc

National Harmful Sexual Behaviour Support Service

Harmful Sexual Behaviour Support Service | SWGfL

Sexual Assault Referral Centre SARC;

[Visiting Our SARC - THE HAZLEHURST CENTRE](#)

See victim support services in Wakefield (on webpage).

In April 2021 in response to 'Everyone's Invited' website testimonies the NSPCC set up a Report Abuse in Education Helpline 0800 136 663. For children/adults/professionals and parents.

Upskirting

Upskirting is a term used to describe the act of taking a sexually intrusive photograph under a persons clothing without their permission/knowledge with the intention of viewing to obtain sexual gratification or to cause the victim humiliation, distress or alarm. This is a criminal offence. We will take police advice on any cases of this in school.

Sharing Nudes and Semi Nudes (previously known as Sexting/Youth Produced Sexual Imagery)

This is defined as the sending or posting of nude or semi-nude images, videos or live streams online by young people under the age of 18. This could be via social media, gaming platforms, chat apps or forums. It could also involve sharing between devices via services like Apple's AirDrop which works offline. Alternative terms used by children and young people may include 'dick pics' or 'pics'. The motivations for taking and sharing nude and semi-nude images, videos and live streams are not always sexually or criminally motivated.

This advice does not apply to adults sharing nudes or semi-nudes of under 18-year olds. This is a form of child sexual abuse and must be referred to the police as a matter of urgency. Nor does it apply to children sharing adult pornography, which depending on its nature and other circumstances, may be handled through the schools behaviour policy.

School will follow the below guidance to define, assess and respond to any incident; and staff will avoid viewing, saving or forwarding any images or videos. Agencies such as police and social care will be involved if required.

- <https://www.gov.uk/government/publications/sharing-nudes-and-semi-nudes-advice-for-education-settings-working-with-children-and-young-people>
- [Remove a nude image shared online | Childline](#)

Searching screening and confiscation guidance for schools:

<https://www.gov.uk/government/publications/searching-screening-and-confiscation>

If an allegation is made:

The incident will be referred to DSL asap

DSL team will hold an initial review meeting

Children involved will be spoken to

Parents will be informed to support child (unless this places the child at risk)

Referral made to other agencies if necessary.

DSLs will note the facts on CPOMS, and follow the local reporting procedures. At all times the pastoral and safeguarding team will support all parties involved.

Children with Harmful Sexual Behaviour (HSB)

Research suggests that up to 40 per cent of child sexual abuse is committed by someone under the

age of 18.

Harmful sexual behaviour (HSB) is developmentally inappropriate sexual behaviour which is displayed by children and young people and which may be harmful or abusive (derived from Hackett, 2014). It may also be referred to as sexually harmful behaviour or sexualised behaviour.

HSB encompasses a range of behaviour, which can be displayed towards younger children, peers, older children or adults. It is harmful to the children and young people who display it, as well as the people it is directed towards.

The management of children and young people with sexually harmful behaviour is complex and the school will work with other agencies to risk assess and maintain the safety of the whole school community. Young people who display such behaviour may be victims of abuse themselves and the child protection procedures will be followed for both victim and perpetrator. Staff who become concerned about a pupil's sexual behaviour should speak to a DSL as soon as possible. We will consider the Brook Traffic Light tool when making judgements.

We are in the process of assessing our school against the toolkit Beyond Referrals - Schools (csnetwork.org.uk).

Wakefield HSB Panel

The support offered by this panel will be accessed via MASH if necessary. This will ensure a coordinated response for the perpetrator as well as the victim.

Panel members include;

Police

Social care

Forensic CAMHS

<https://www.southwestyorkshire.nhs.uk/services/forensic-child-and-adolescent-mental-health-services-camhs/>

We assess school against the toolkit Beyond Referrals - Schools (csnetwork.org.uk)

Bullying

Is usually defined as behaviour that is:

- repeated
- intended to hurt someone either physically or emotionally
- often aimed at certain groups, for example because of race, religion, gender or sexual orientation

Is a very serious issue that can cause considerable anxiety and distress. At its most serious level, bullying can have a disastrous effect on a child's wellbeing and in very rare cases has been a feature in the suicide of some young people.

<https://www.gov.uk/government/publications/preventing-and-tackling-bullying>

For info on sexual and sexist bullying: Sexual and sexist bullying (www.anti-bullyingalliance.org.uk)

All incidences of bullying, including cyber-bullying, sexual bullying and prejudice-based bullying will be recorded and reported and will be managed through our behaviour and tackling-bullying procedures. All pupils and parents can access information on joining the school and the subject of bullying is addressed at regular intervals in RSHE education. If the bullying is particularly serious, or the tackling

bullying procedures are deemed to be ineffective, the Headteacher and the DSL's will consider implementing child protection procedures.

Bullying incidents including discriminatory and prejudicial behaviour e.g. racist, disability and homophobic bullying and use of derogatory language will be recorded and analysed.

Please see our website for our [Behaviour Policy](#) and Child-Friendly Document.

[Preventing bullying - GOV.UK \(www.gov.uk\)](#)

[Sexual and sexist bullying \(anti-bullyingalliance.org.uk\)](#)

[Cyberbullying Guidance | Childnet](#)

Contextual Safeguarding/Extra Familial abuse

Contextual Safeguarding/Extra Familial abuse is an approach to understanding, and responding to, young people's experiences of significant harm beyond their families. It recognises that the different relationships that young people form in their neighbourhoods, schools and online can feature violence and abuse. Parents and carers have little influence over these contexts, and young people's experiences of extra-familial abuse can undermine parent-child relationships. Extra Familial abuse, therefore, expands the objectives of child protection systems in recognition that young people are vulnerable to abuse in a range of social contexts. For example online safety, drug use, CCE, CSE, Mental Health issues.

Contextual Safeguarding Network: <https://contextualsafeguarding.org.uk/>

Hate Crime

Any hate crime/incident will be reported through local reporting mechanisms. Hate Crime/incident is any behaviour that anyone thinks was caused by hatred of: race, sexual orientation, gender identification, disability, religion or faith. A hate crime could be name calling, arson/fire, attacks or violence, damage such as to your house or car, graffiti or writing. Police will be involved if necessary.

<https://www.wakefield.gov.uk/community/hate-crime>

Prejudice Related Incidents

St. Austin's Catholic Primary School is opposed to all forms of prejudice and any incidents of prejudice will be addressed immediately under the appropriate policy. Advice will be sought from other agencies if appropriate.

Children Missing Education CME

CME is defined as children of compulsory school age who are not registered pupils at a school and are not receiving suitable education otherwise than at school e.g. home schooling.

However at any stage persistence absence and any child going missing from school, which includes within the school day, is a potential indicator of abuse and neglect, including exploitation, mental health concerns, risk of forced marriage, Fabricated and Induced Illness etc. Unauthorised absences will be monitored and followed up in line with procedures, particularly where children go missing on repeated occasions. All staff will be aware of the signs of risk and individual triggers including travelling to conflict zones, FGM and forced marriage.

We take attendance registers at the start of every day/lesson

All pupils will be placed and removed from admission and attendance registers as required by law.

We will collect, where possible, more than one emergency contact number for each pupil.

We will inform the local authority of any child removed from our admission register. We will inform the local authority of any pupil who fails to attend for a continuous period in line with local Wakefield procedures. Missing Officer – details in appendix.

Local procedures;

[Children Missing Education - Wakefield Council](#)

[Child not attending school; One Minute guide](#)

[One Minute Guides • Wakefield Safeguarding Children \(wakefieldscp.org.uk\)](#)

Child Sexual Exploitation CSE

CSE is a form of sexual abuse. It occurs where an individual or group takes advantage of an imbalance of power to coerce, manipulate or deceive a child (male or female) into sexual activity (a) in exchange for something the victim wants or needs, and/or (b) for the financial advantage or increased status of the perpetrator or facilitator. The victim may have been sexually exploited even if the sexual activity appears consensual. CSE does not always involve physical contact; it can occur through the use of technology. CSE can affect 16 and 17 year olds who can legally consent to have sex. It includes contact and non-contact sexual activity e.g. copying images and posting on social media. It can affect both male and females and can include children who have been moved/trafficked for exploitation.

This is a serious crime and is never the victim's fault even if there is some form of exchange.

[Appropriate language: Child sexual and/or criminal exploitation guidance for professionals - Tackling Child Exploitation \(researchinpractice.org.uk\)](#)

[Child sexual exploitation: definition and guide for practitioners - GOV.UK \(www.gov.uk\)](#)

The police team can be contacted for extra support and information. (details in appendix) NB they do not take the place of your usual reporting procedures.

<https://www.gov.uk/government/publications/child-sexual-exploitation-definition-and-guide-for-practitioners>

Child Criminal Exploitation CCE / County Lines

In a similar way to sexual exploitation CCE is when there is a power imbalance where children are used by individuals or gangs to take part in criminal activity, this can include drug running, working in cannabis factories, stealing/pick pocketing, vehicle crime, threatening other young people etc. The child often believes they are in control of the situation. High levels of violence, coercion and intimidation are common.

County lines is a term used to describe gangs supplying drugs to suburban areas and market and coastal towns using dedicated mobile phone lines or "deal lines". It involves child criminal exploitation (CCE) as gangs use children and vulnerable people to move and store drugs and money. Gangs establish a base in the market location, typically by taking over the homes of local vulnerable adults by force or coercion in a practice referred to as 'cuckooing'.

County lines is a major, cross-cutting issue involving drugs, violence, gangs, safeguarding, criminal and sexual exploitation, modern slavery, and missing persons; and the response to tackle it involves the police, the National Crime Agency, a wide range of Government departments, local government agencies and VCS (voluntary and community sector) organisations. County lines activity and the

associated violence, drug dealing and exploitation have a devastating impact on young people, vulnerable adults and local communities.

[Criminal exploitation of children and vulnerable adults: county lines - GOV.UK \(www.gov.uk\)](#)

Local exploitation resources;

[Child Exploitation • Wakefield Safeguarding Children \(wakefieldscp.org.uk\)](#)

In both CSE and CCE children's vulnerability as victims is not always recognised by professionals.

Serious Violence

Staff will look out for signs that indicate that a student may be at risk of or involved in serious crime, including criminal networks or gangs and follow the appropriate referral pathways for help and support. We understand that children who are likely to be involved in violence may have previously suffered trauma and abuse and that peak times, for serious violence involving school children, can be just before or just after school hours.

Practical advice for schools/colleges;

[Advice to schools and colleges on gangs and youth violence - GOV.UK \(www.gov.uk\)](#)

Searching screening and confiscation guidance for schools

[Searching, screening and confiscation at school - GOV.UK \(www.gov.uk\)](#)

Domestic Abuse

This does not have to include violence to be classed as abuse.

Any incident or pattern of incidents of controlling, coercive, threatening behaviour, violence or abuse between those aged 16 or over who are, or have been, intimate partners or family members regardless of gender or sexuality. The abuse can encompass, but is not limited to:

- psychological
- physical
- sexual
- financial
- emotional

1:4 women and 1:6 men will experience Domestic abuse at some time in their lifetime. Children are victims in their own right of this type of abuse, i.e. if they are seeing or hearing this abuse it can have a detrimental long term impact on their health, development and ability to learn.

We are mindful that staff may be victims or perpetrators and we signpost to local and national services.

Our school is taking part in Operation Encompass. We receive information, usually the next day, if police have been called out to a domestic abuse incident and any of our pupils were present. The purpose of this information sharing is to make the next day better for the child.

[Home : Operation Encompass](#)

[Domestic abuse - here to help - Wakefield Council](#)

National Service - Injunctions etc;

[Domestic Violence & Abuse · Emergency Injunction Service \(ncdv.org.uk\)](http://ncdv.org.uk)

Resources for children

[The Hide Out](#)

Parental Conflict advice website;

[Home - Relationship Matters](#)

Honour Based Violence HBV – e.g. FGM/Forced Marriage Female Genital Mutilation FGM

This is illegal and a form of child abuse. It involves a procedure to remove all or some of the female genitalia or any other injury to these organs. Staff will be aware of the signs and indicators of this and their legal duty to report **known** cases on under 18's to the police. Reporting form is available on the wscp website – education - templates.

Multi agency guidelines;

<https://www.gov.uk/government/publications/multi-agency-statutory-guidance-on-female-genital-mutilation>

<http://nationalfgmcentre.org.uk/wp-content/uploads/2019/06/FGM-Schools-Guidance-National-FGM-Centre.pdf>

Forced Marriage

Is illegal and a form of child abuse. A marriage entered into without the full and free consent of one or both parties, where violence treats or coercion is used.

Multi Agency Guidelines:

<https://www.gov.uk/government/publications/handling-cases-of-forced-marriage-multi-agency-practice-guidelines-english>

National Charity: <https://karmanirvana.org.uk/>

Breast ironing, also known as **breast** flattening, is the pounding and massaging of a pubescent girl's breasts, using hard or heated objects, to try to make them stop developing or disappear.

Preventing Radicalisation

This is part of our wider safeguarding duty. We recognise that school plays a significant part in the prevention of this type of harm. We will include education through our RHSE curriculum and encourage 'British Values' and critical thinking.

We are aware extremism spans many topics including misogynistic e.g. Incel. However in Wakefield right wing extremism is most common.

An incel, an abbreviation of "involuntary celibate", is a member of an online subculture of people who define themselves as unable to find a romantic or sexual partner despite desiring one. Discussions in incel forums are often characterised by resentment and hatred, misogyny, self-pity and self-loathing, racism, a sense of entitlement to sex, and the endorsement of violence against women and sexually active people.

We will intervene where possible to prevent vulnerable children being radicalised. The internet has become a major factor in radicalisation and recruitment.

Extremism – vocal or active opposition to our fundamental values, including democracy, rule of law, individual liberty and mutual respect and tolerance of different faiths and beliefs. This also includes calling for the death of members of the armed forces.

Radicalisation – refers to the process by which a person comes to support terrorism and extremist ideologies associated with terrorist groups.

Terrorism – an action that endangers or causes serious violence to a person/people; causes serious damage to property; or seriously interferes or disrupts an electronic system. The use of threat must be designed to influence the government or to intimidate the public and is made for the purpose of advancing a political, religious or ideological cause.

As with all other forms of abuse, staff should be confident in identifying pupils at risk and act proportionately.

We will work with other partners including the Prevent Police Officer and Channel Panel – a voluntary confidential support program for those who are considered vulnerable to being drawn into terrorism.

The DSL team is appropriately trained and able to offer advice, support and information to other staff.

We will ensure safe internet filters are in place and ensure our pupils are educated in online safety.

Prevent police officer in Wakefield – details in appendix.

Prevent duty – link in legislation section.

Prevent referral form – wscp website- education - templates

Resources to educate pupils: <http://educateagainsthate.com/>

Private Fostering

A private fostering arrangement is one that is made privately (without the involvement of a local authority) for the care of a child under the age of 16 years (under 18, if disabled) by someone other than a parent or close relative, in their own home, with the intention that it should last for 28 days or more. (*Close family relative is defined as a ‘grandparent, brother, sister, uncle or aunt’ and includes half-siblings and step-parents; it does not include great-aunts or uncles, great grandparents or cousins.)

The school will follow the legal requirements of reporting to the Local Authority as set out by WSCP.

<https://www.wakefieldscp.org.uk/parents-carers/private-fostering/>

Homelessness

Wakefield procedures and support, including 16 and 17 year olds;

<http://www.wakefield.gov.uk/health-care-and-advice/adults-and-older-people-services/homelessness>

Drug Use

Local service – Turning Point Inspiring Recovery

[Turning Point | Health & Wellbeing \(turning-point.co.uk\)](http://turning-point.co.uk)

National website: <https://www.talktofrank.com/>

Dealing with issues relating to Parental Responsibility – Dispute Resolution

<https://www.gov.uk/government/publications/dealing-with-issues-relating-to-parental-responsibility>

<https://helpwithchildarrangements.service.justice.gov.uk/>

Perplexing Presentations and Fabricated Illness

Fabricated or induced illness (FII) is a rare form of child abuse. It occurs when a parent or carer, usually the child's biological mother, exaggerates or deliberately causes symptoms of illness in the child. Perplexing Presentations sits under this where we have concerns but do not have evidence the child is a risk of significant harm. In all these cases we will follow local protocols and seek advice from health colleagues. See protocol below (includes signs and indicators);

Local procedures;

[1.4.22 Perplexing Presentations \(PP\) and Fabricated or Induced Illness \(FII\) in Children \(proceduresonline.com\)](https://www.proceduresonline.com/1.4.22-Perplexing-Presentations-PP-and-Fabricated-or-Induced-Illness-FII-in-Children)

Safe Sleeping/Coping with Crying – for early years

[ICON / Safer Sleep | Wakefield Safeguarding Children Partnership \(WSCP\) \(wakefieldscp.org.uk\)](https://www.wakefieldscp.org.uk/ICON-Safer-Sleep-Wakefield-Safeguarding-Children-Partnership-WSCP)

Online Safety

Many of our pupils will use mobile phones, tablets and computers on a daily basis. They are a source of fun, entertainment, communication and education. However, we know that some adults and young people will use these technologies to harm children. The harm might range from sending hurtful or abusive communications, to enticing children to engage in sexually harmful conversations, webcam photography, encouraging radicalisation or face-to-face meetings. The school's [Online/ E safety policy](#), explains how we aim to keep pupils safe in school which includes reasonable filters and monitoring. The DSL team is responsible for Online safety. Cyberbullying and sharing nudes and semi nudes by pupils, via texts and emails, will be treated as seriously as any other type of bullying and in the absence of a child protection concern will be managed through our anti-bullying and confiscation procedures.

Chatrooms and some social networking sites are the more obvious sources of inappropriate and harmful behaviour and pupils are not allowed to access these sites in school. Some pupils will undoubtedly be 'chatting' outside school and are informed of the risks of this through RHSE. Parents are encouraged to consider measures to keep their children safe when using social media]. We advise parents by sending regular online newsletters, promoting online safety through our parent communication app, Class Dojo and also via the school website.

The breadth of issues classified within online safety is considerable, but can be categorised into four areas of risk:

- **Content:** being exposed to illegal, inappropriate or harmful material; for example, pornography, fake news, racism, misogyny, self-harm, suicide, anti-Semitism or radical and extremist views;
- **Contact:** being subjected to harmful online interaction with other users; for example, Child on Child pressure, commercial advertising as well as adults posing as children or young adults with the intention to groom and exploit them for financial, criminal, sexual or other purposes.
- **Conduct:** personal online behaviour that increases the likelihood of, or causes, harm; for example making, sending and receiving explicit images (consensual and non-consensual sharing of nudes and semi nudes and 'or pornography, or online bullying and, or online bullying.

- **Commerce.** Risks such as online gambling, inappropriate advertising, phishing or other financial scams.

Pupils will be educated in online safety, and regularly reminded, as an ongoing part of our curriculum.

If required, we will seek advice from local sources or the national helplines

Professionals Online Safety Helpline POSH

[Professionals Online Safety Helpline - UK Safer Internet Centre](#)

Acceptable IT use for staff and pupils will be enforced and parents are also informed of expectations. (see acceptable IT use policy)

We have self-assessed our schools online safety provision using [Online Safety Self-Review Tool for Schools | 360safe | 360safe](#)

If we use any external speaker to add to our curriculum we will ensure we follow the below advice and checklist.

<https://www.gov.uk/government/publications/using-external-visitors-to-support-online-safety-education-guidance-for-educational-settings>

We will not respond to individual apps or challenges which may occur, so as not to give more attention to the publicity, but will simply reiterate our basic online safety messages as and when required.

[Harmful online challenges and online hoaxes - GOV.UK \(www.gov.uk\)](#)

To protect students from mobile technology accessing 3G, 4G and 5G we will have a ban on mobile phones whilst in school. If students need to bring their phone to school because they walk home, they hand their phone into the school office on arrival.

See above section for Sharing Nudes and Semi Nudes.

Report harmful content;

[Report Harmful Content - We Help You Remove Content](#)

Teaching Online Safety in Schools

- <https://www.gov.uk/government/publications/teaching-online-safety-in-schools>

Education for a Connected World:

- <https://www.gov.uk/government/publications/education-for-a-connected-world>

Safeguarding and remote education:

- <https://www.gov.uk/guidance/safeguarding-and-remote-education-during-coronavirus-covid-19>

Online Safety for SEND

- <https://www.childnet.com/resources/star-sen-toolkit>
- <https://www.thinkuknow.co.uk/professionals/resources>

Gaming Advice

- <https://www.nspcc.org.uk/preventing-abuse/keeping-children-safe/online-safety/online-games-helping-children-play-safe/>

Professionals online safety helpline

<https://www.saferinternet.org.uk/professionals-online-safety-helpline>

Filtering and monitoring;

[Appropriate Filtering and Monitoring - UK Safer Internet Centre](#)

Helping Children to Keep Themselves Safe/RHSE

Children are taught to understand relationships, promote British values and respond to and calculate risk through our Relationships and Sex Education and Health Education (RSHE) lessons and in all aspects of school life. We will have a consistent approach of following a robust sequential RSHE program. Included in this is the knowledge they need to recognise and to report abuse whilst being clear that it is never the fault of the children who is abused and that victim blaming is always wrong.

Our approach is designed to help children to think about risks they may encounter both on and off line and have help to work out how those risks might be overcome and the support available to them. Discussions about relationships and risk are empowering and enabling for all children and promote sensible behaviour rather than fear or anxiety. Children are taught how to conduct themselves and how to behave in a responsible manner. Children are also reminded regularly about consent, online safety, including sharing nudes/semi nudes and bullying procedures including the legalities and consequences and where to go for help. We mark anti bullying week, children mental health week, internet safety day etc.

The school continually promotes an ethos of respect for children and the emotional health and wellbeing of our students is important to us. Pupils are encouraged to speak to a member of staff in confidence about any worries they may have. Pupils also have access to a wide range of support both on and off line. Childline is regularly promoted especially over school holidays.

However, all our pupils are aware that if they disclose that they are being harmed or that they have, or intend, to harm another, that this cannot be kept secret and that information will need to be shared.

[See RSE Policy.](#)

We will follow the guidance on RHSE education: <https://www.gov.uk/government/publications/sex-and-relationship-education>

We acknowledge and sign up to Wakefield's Young Peoples Charter and actively promote this across school: [Home page • Wakefield Safeguarding Children \(wakefieldscp.org.uk\)](#)

We use Wakefield Resilience framework to build resilience in our students: <https://www.riskandresilience.org.uk/>

Students are encouraged to access local support via WF-I-Can website: <https://wf-i-can.co.uk>

Primary schools NSPCC PANTS program

[PANTS resources for schools and teachers | NSPCC Learning](#)

[Childline | Childline](#)

Support for those involved in a child protection issue

Child abuse is devastating for the child and can also result in distress and anxiety for staff who become involved.

We will support pupils, their families, and staff by:

- taking all suspicions and disclosures seriously
- nominating a link person (*DSL*) who will keep all parties informed and be the central point of contact
- where a member of staff is the subject of an allegation made by a pupil, separate link people will be nominated to avoid any conflict of interest
- responding sympathetically to any request from pupils or staff for time out to deal with distress or anxiety
- maintaining confidentiality and sharing information on a need-to-know basis only with relevant individuals and agencies
- maintaining and storing records securely
- offering details of helplines, counselling or other avenues of external support
- following the procedures laid down in our whistleblowing, complaints and disciplinary procedures
- co-operating fully with relevant statutory agencies.

Complaints Procedure

Our complaints procedure will be followed where a pupil or parent raises a concern about poor practice towards a pupil that initially does not reach the threshold for child protection action. Poor practice examples include unfairly singling out a pupil, belittling a pupil or discriminating against them in some way. Complaints are managed by senior staff, the Headteacher and governors. An explanation of the complaints procedure is included on the school website and copies can be made available from the school office.

Complaints from staff are dealt with under the school's complaints and disciplinary and grievance procedures.

All complaints and concerns will be recorded.

If you have concerns about a colleague or safeguarding practice

Staff who are concerned about the conduct of a colleague or safeguarding practice within the school are undoubtedly placed in a very difficult situation.

All staff must remember that the welfare of the child is paramount and staff should feel able to report all concerns about a colleague or the safeguarding practice within the school. The school's **whistleblowing code** (all staff have a copy and it is available on the staff notice board in both buildings) enables staff to raise concerns or allegations in confidence and for a sensitive enquiry to take place.

The NSPCC Whistleblowing Advice Line offers free advice and support to professionals with concerns about how child protection issues are being handled in their own or another organisation. Call 0800 028 0285, email help@nspcc.org.uk or find out more about the Whistleblowing Advice Line.

All concerns of poor practice or possible child abuse by colleagues should be reported to the Headteacher. Complaints about the Headteacher should be reported to the Chair of the Academy Council.

Staff may also report their concerns directly to the Designated Officer/LADO, Social Care Direct or the police if they believe direct reporting is necessary to secure action or to the NSPCC whistleblowing helpline.

All complaints and concerns will be recorded.

Allegations against staff

When an allegation is made against a member of staff, including supply staff and volunteers, set procedures must be followed. See Keeping Children Safe in Education Part 4. It is important to have a culture of openness and transparency and a consultation with the LADO/Designated Officer will happen if staff have;

- **Behaved in a way which has harmed, or may have harmed a child;**
- **Possibly committed a criminal offence against or related to a child or**
- **Behaved towards a child or children in a way that indicates they would pose a risk of harm to children or**
- **Behaved or may have behaved in a way that indicates they may not be suitable to work with children (this includes behaviour that may have happened outside of work – transferable risk).**

Case Managers

Allegations and low level concerns against staff should be immediately reported, in any event within 24 hours of becoming aware, to the Headteacher. Allegations and concerns against the Headteacher should be reported to the Chair of Governors. Staff may also report their concerns directly to Police or LADO or NSPCC Whistleblowing helpline if they believe direct reporting is necessary to secure action.

The head teacher should do an urgent initial consideration in order to establish if there is substance to the allegation or concern. Any agency for supply staff/contractors etc should also be involved/informed.

In the event of the headteacher being absent the deputy is the next senior DSL, Richard Senior.

The head teacher should NOT carry out any investigation, other than the initial basic fact find, until consultation with the LADO. Full and accurate records will be made at every stage alongside HR processes.

Referrals must be made to the LADO within one working day. Case managers may then be invited to a meeting coordinated by the LADO.

Depending on outcomes of investigations it may be necessary to report to the DBS/Teaching Regulation Agency as per guidance.

It is rare for a child to make an entirely false or malicious allegation, although misunderstandings and misinterpretations of events do happen. We recognise that a child may also make an allegation against an innocent party because they are too afraid to name the real perpetrator. However if a child is found to continually make false allegations this may be a sign of mental health issues and a referral to services such as CAMHS may be required.

An uncomfortable fact is that some professionals do pose a serious risk to pupils and we must act on every allegation. However, staff who are the subject of an allegation have the right to have their case dealt with fairly, quickly and consistently and to be kept informed of its progress. Suspension is not the default option and alternatives to suspension will always be considered. In some cases, staff may be suspended where this is deemed to be the best way to ensure that children are protected. Staff will be advised to contact their trade union and will also be given access to a named representative.

The full procedures for dealing with allegations against staff, including supply staff, can be found in Keeping Children Safe in Education part 4.

Staff, parents and governors are reminded that publication of material that may lead to the identification of a teacher who is the subject of an allegation is prohibited by law. Publication

includes verbal conversations or writing, including content placed on social media sites. We will communicate this to all parties.

Safer Working Practice training is undertaken every 2 years and headteacher provides regular reminders regarding staff of code of conduct and behaviour expectations. This is important to avoid any culture slippage or erosion of the code of conduct and values we expect from all staff.

In cases of low level concerns

We will robustly record any low level concerns that may not reach the above thresholds. We promote a culture of openness and provide a robust structure to handling concerns about behaviour however low level. Sharing of low level concerns by staff to the headteacher will be viewed as a neutral act.

These records will be kept in a central low level concerns file (kept in the headteachers office) including the details of the concern, the context and the action taken. These records will be reviewed by the headteacher and senior DSL's annually so that patterns can be identified and a record of these reviews will be made. Records will be kept until the person leaves our employment.

Staff are encouraged to self-refer any of their own behaviour both inside and outside school which could be constituted as a concern.

The headteacher will speak to the person who raised the concern, witnesses and also to the person subject to the concern. Then review the information to determine, if the behaviour is consistent with the code of conduct, the behaviour constitutes a low level concern or the behaviour is not serious enough to consider a referral to LADO but may merit advice from the LADO or this is a pattern that now hits LADO referral criteria. Robust recording will take place including the rationale for decision and action taken.

This will all be done discreetly and on a need to know basis.

We will use the reporting form – see appendix E (farrer toolkit) [safe_low-level-concerns-guidance-2021-as-at-june-2022.pdf](https://www.farrer.co.uk/wp-content/uploads/2021/06/safe_low-level-concerns-guidance-2021-as-at-june-2022.pdf) ([farrer.co.uk](https://www.farrer.co.uk))

Staff Training and Induction

It is important that all operational staff, including temporary and volunteers, have regular training to enable them to recognise the possible signs of abuse and neglect and to know what to do if they have a concern, including dealing with Sexual Violence and Sexual harassment, Early Help and whistleblowing.

All staff, including site staff and the Headteacher, will be inducted in and then regularly trained in Safeguarding, including sexual violence and harassment and online safety, and be given regular updates by the DSL team in the form of email, newsletters, 1 minute guides, 7 minute guides and input at staff meetings. This will be planned for by the DSL team and distributed regularly.

WSCP advice is that all school staff receive Education specific basic refresher training once every 2 years with DSL top ups in between. Alongside Safer working Practice Training also every 2 years with the headteacher issuing regular code of conduct reminders to all staff in between.

All of our staff are aware of and trained in the following; Safer Working Practices in Education guidance 2022 [Home \(saferrecruitmentconsortium.org\)](https://www.saferrecruitmentconsortium.org/)

Staff are trained to seek and record the voice of the child and take this into consideration when making decisions. However, there may be circumstances where we override the students wishes and feelings to act in their best interests e.g. in case of CSE/ CCE where, as a result of perpetrator grooming, the student does not want any intervention.

Our staff are trained in ACEs Adverse Childhood Experiences, and are trauma aware, they understand and aim to work towards trauma informed practice.

All of our staff are aware of and trained in the following;

Safer Working Practices in Education guidance 2019

<https://www.saferrecruitmentconsortium.org/>

DSL's will receive face to face training updated every two years. They must also do Prevent training. All DSL's are strongly recommended to also attend the multi-agency Working Together Training – A Shared Responsibility.

DSL's will be supported and encouraged to attend additional training to keep up to date, including DSL forums, sign up to WSCP E-bulletin and other multi-agency training offered by WSCP and the Safeguarding Advisor. Specifically, they are encouraged to attend specific Domestic Abuse training, before signing up to Operation Encompass, and specific Online Safety training.

For further info on free face to face or recorded courses see <https://www.wakefieldscp.org.uk/schools-colleges/schools-colleges-settings-learning-development/>

Governors will receive strategic level safeguarding training every 2 years. The DSL team may invite governors to any staff operational training/ include them in staff safeguarding newsletters etc, whilst acknowledging this just for interest/understanding and is in addition to the strategic level training they require.

DSL team also provide governors with regular strategic reports.

Headteacher and Chair of Governors are encouraged to undertake managing allegations against staff training/ or to have read and understood Part 4 of KCSIE. Any member of staff involved in recruitment of staff/interview panels etc is encouraged to read part 3 of KCSIE and undertake the Safer Recruitment training – at least one member of interview panel must be trained. WSCP recommend Safer Recruitment Consortium as the provider (this course is offered through Wakefield Traded Services).

All training will be recorded, including sign in sheets, and monitored to flag in advance when updates are required. Any training done by third party or independent providers must reflect local protocols and training minimum standards, a checklist is available.

The booklet 'What to do if you're worried a child is being abused' 2015 and Part One & Annex B of Keeping Children Safe in Education is available on the staff notice board under safeguarding. Relevant parts of KCSIE are issued and understanding checked at the start of every academic year.

New staff and governors will receive an induction in safeguarding which includes the school's child protection policy, details of the DSL's, reporting and recording arrangements specific to the school, dates of their last training, the staff code of conduct, CME and the whistleblowing policy. Staff will sign induction documentation to say they have received this and understood.

Supply staff and other visitors in contact with students will be given the school's Academy Safeguarding Visitor Sheet at the school office that includes a summary of key safeguarding information pertinent to the school.

We will check staff have understood the training received by;

Running a half termly quiz and collating the results following up any identified misunderstandings if they arise/

Staff will have a safeguarding quiz question as part of every staff meeting.

Safer recruitment

Our school endeavours to ensure that we do our utmost to employ 'safe' staff by following the guidance in Keeping Children Safe in Education together with WSCP and the school's individual procedures. At least one person on every interview panel will have undertaken Safer Recruitment

training run by The Safer Recruitment Consortium which is provided locally and recommended by WSCP.

Recruitment, selection and pre-employment vetting is carried out in accordance with Keeping Children Safe in Education – Part 3. Including;

- Recruitment and selection process
- Pre-appointment and vetting checks, regulated activity and recording information
- Other checks that may be necessary for staff volunteers and others including the responsibilities of schools and colleges for children in other settings.
- How to ensure ongoing safeguarding of children and the legal reporting duties on employers

CV's will not be accepted as part of the application process

Self-disclosure information on applicants obtained prior to shortlisting will not be used as part of the shortlisting process

Online searches of publicly available information will be carried out as part of the schools' due diligence on shortlisted candidates and candidates will be made aware of this.

References will be sought before the interview so any concerns can be explored at interview along with any gaps or inconsistencies from their application form.

All offers of employment will be conditional upon satisfactory completion of the pre-employment checks applicable for the role

To comply with the DBS code of practice and Under GDPR we will not keep DBS certificates.

The Single Central Record is maintained in accordance with Keeping Children Safe in Education Part 3.

We will obtain written confirmation from supply agencies that agency and third party staff have been appropriately checked and trained and ensure the correct person arrives in school.

Volunteers

Volunteers, including governors will be risk assessed and undergo checks commensurate with their work in the school and contact with pupils i.e. if they are in regulated activity or not and this will be recorded.

Contractors

We will check the identity of all contractors working on site and request checks where they work in regulated activity or unsupervised.

Visitors

If they work in regulated activity, we will request identification when they visit and written evidence from their employer that all relevant checks have been carried out. The Headteacher will use their professional judgement regarding escorting visitors in the school. All visitors will be asked to sign in and wear a badge identifying them as a visitor.

Supply staff and other visiting staff will be given the school's Visitor Leaflet

Site security

Visitors to the school are asked to sign in, if necessary show ID, and are given a badge, which confirms they have permission to be on site. All visitors will be issued with a leaflet informing them of who the

DSL's are, the code of conduct expected and what to do if they have a safeguarding concern. Parents who are simply delivering or collecting their children do not need to sign in. All visitors are expected to enter through one entrance and observe the school's safeguarding and health and safety regulations to ensure children in school are kept safe. The Headteacher will exercise professional judgement in determining whether any visitor should be escorted or supervised while on site. All staff are expected to clearly wear their ID badges whilst on site.

18. Extended school and off-site arrangements

Where extended school activities are provided by and managed by the school, our own child protection policy and procedures apply and a DSL will be available. If other organisations provide services or activities on our site we will check that they have appropriate procedures in place, including safer recruitment procedures and clarify whose procedure is to be followed if there are concerns. There will be clear communication channels to ensure the DSL is kept appropriately informed. This will form part of our hiring arrangements

<https://www.gov.uk/government/publications/keeping-children-safe-in-out-of-school-settings-code-of-practice>

When our pupils attend off-site activities, including day and residential visits and work related activities, we will risk assess and check that effective child protection arrangements are in place. We will clarify whose procedures are to be followed, with the DSL kept appropriately informed. If external staff have regular contact with our pupils, they will be asked to sign up to the schools' code of conduct to ensure clarity of expectations e.g. mobile phone use and social media restrictions.

Alternative Provision

We will obtain written confirmation from any alternative provision that all relevant checks have been carried out as we would with our own staff. We will share any risk assessments and safeguarding issues where relevant and will regularly visit the provision and our students. We will ensure they have effective safeguarding in place and keep the DSL appropriately informed.

19. Photography and images

The vast majority of people who take or view photographs or videos of children do so for entirely innocent and acceptable reasons. Sadly, some people abuse children through taking or using images, so we must ensure that we have some safeguards in place.

To protect pupils we will:

- seek their consent for photographs to be taken or published (for example, on our website or in newspapers or publications)
- seek parental consent
- not use pupils full name with an image
- ensure pupils are appropriately dressed
- ensure that personal data is not shared.
- store images appropriately, securely and for no longer than necessary.
- only use school equipment, i.e. not personal devices.
- encourage pupils to tell us if they are worried about any photographs that are taken of them.

20. Physical intervention and use of reasonable force

All staff are encouraged to use de-escalation techniques and creative alternative strategies that are specific to the child. Restraint will only be used as a last resort and all incidents of this are reviewed, recorded and monitored. Reasonable force will be used in accordance with government guidance.

Safeguarding and welfare concerns will be taken into account when restraint is used on SEND students.

<https://www.gov.uk/government/publications/use-of-reasonable-force-in-schools>
[See Use of Reasonable Force in the Positive Behaviour Policy](#)

21. Intimate Care

If a child requires regular intimate care on site this is likely to be written into a care plan which staff will adhere to. If an accident occurs and a child needs assistance with intimate care this will be risk managed to afford dignity to the child as well as security to the staff member. Staff will behave in an open and transparent way by informing another member of staff and having the child's consent to help. Parents will be informed and incidents recorded. See Intimate Care Policy.

First aid and managing medical conditions.

Staff will be trained appropriately in first aid and follow best practice of 'saying before touching'.

Section 100 of the Children and Families Act 2014 places a duty on schools to make arrangements for supporting pupils at their school with medical conditions. Individual Health Care Plans may need to be drawn up and multi-agency communication will be essential. Staff will be appropriately trained and responsibilities will be carried on in accordance with government guidance Sept 2014.

<https://www.gov.uk/government/publications/supporting-pupils-at-school-with-medical-conditions-3>

[See Managing Medical Conditions Policy.](#)

Changing Rooms and other sports issues.

We will take advice from the local Safeguarding Partners as well as national advice from the NSPCC Sports Unit. <https://the cpsu.org.uk/>

Special Circumstances

Looked After Children (LAC) / Children in Care (CiC) and Previously in Care

Children in care and previously looked after children start school with the disadvantage of their pre-care experiences and often have special educational needs. Most commonly, the reason for children becoming looked after is as a result of abuse or neglect. The school must ensure that appropriate staff have information about a child's looked after status and care arrangements, including contact. The Designated Teacher for Children in Care and previously looked after and the DSL team have details of the child's social worker / carer, parent or guardian. As well as the name and contact details of the local authority's Virtual School Head. The Designated Teacher will work within the Wakefield Pupil Premium Plus policy guidelines to support the academic progress of CiC / PCiC through appropriate target setting in their termly PEP (Personal Education Plan)

<https://www.gov.uk/government/publications/promoting-the-education-of-looked-after-children>

<https://www.gov.uk/government/publications/designated-teacher-for-looked-after-children>

Wakefield Virtual School – virtualschool@wakefield.gov.uk

Children with a social worker

We will promote educational outcomes of this group by DSL's appropriately sharing information about the welfare, safeguarding and child protection issues that this group of children are experiencing, or have experienced, with teachers and school and college leadership staff. DSL's will ensure staff, know who these children are, understand their academic progress and attainment and maintain a culture of high aspirations for this cohort; supporting teaching staff to identify the challenges that children in this group might face and the additional academic support and adjustments that they could make to best support these children.

Work Experience

The school has detailed procedures to safeguard pupils undertaking work experience, including arrangements for checking people who provide placements and supervise pupils on work experience which are in accordance with the guidance in Keeping Children Safe in Education. For School Direct students this is done in conjunction with Leeds Trinity University. For Work experience school placements this is done with the provider high school or college. For any other person requesting work experience a DBS is sought prior to placement.

Remote Learning Safeguarding Considerations

During lockdowns we follow government and local arrangements for safeguarding by providing support for vulnerable children in school and support for others via remote learning and home visits if necessary.

During Covid a safeguarding tracker was completed and returned to the Local Authority to allow coordinated support for children and families. We will complete this if required for any further lockdowns.

Vulnerable children include those who have a social worker and those children and young people up to the age of 25 with education, health and care (EHC) plans. Those who have a social worker include children on Child Protection CP, those who are Child in Need CIN and those who are Looked After Children LAC or Children in Care CIC in West Yorkshire. Those with an EHC plan will be risk-assessed in consultation with the Local Authority and parents, to decide whether they need to continue to be offered a school or college place in order to meet their needs, or whether they can safely have their needs met at home. Many children and young people with EHC plans can safely remain at home. Vulnerable also includes any other child the DSL deem to need to be in school for any reason.

Our DSL will follow local checklists when undertaking any home visits to children who are not accessing provision.

Resources & Agencies | Wakefield Safeguarding Children Partnership (WSCP) (wakefieldscp.org.uk)

Attendance will be monitored in accordance with government guidance, with links made to local arrangements.

The basics of this policy will remain unchanged e.g. reporting and recording, DSL availability and safer recruitment arrangements.

Remote education is provided via Google Classrooms.

Safeguarding considerations included using local WSCP checklists and; <https://www.gov.uk/guidance/safeguarding-and-remote-education-during-coronavirus-covid-19>

PART B - Child Protection Procedures

Categories and Definitions

To ensure that our pupils are protected from harm, we need to understand what types of behaviour constitute abuse and neglect.

For allegations against staff please see earlier section.

Abuse

A form of maltreatment of a child. Somebody may abuse or neglect a child by inflicting harm, or by failing to act to prevent harm. Children may be abused in a family or in an institutional or community setting by those known to them or, more rarely, by others. Abuse can take place wholly online, or technology may be used to facilitate offline abuse.

Children may be abused by an adult or adults, however it is important that we recognise that students can also be abused by another child or children.

Abuse of a child is never acceptable. We will ensure we do not have a culture where low standards are considered acceptable or viewed as 'normal for' a family or community.

For further information on
Mental Health issues
Suicide
Peer on Peer abuse including sexual violence and harassment
Drug use
Sexting/Youth produced sexual imagery
Homelessness
Domestic Abuse
HBV/A
CSE
CCE/County Lines
Bullying
Online safety
Radicalisation
Suicide
Serious Violence
Please see- Current Issues.

Voice of the Child

We will always seek and record the voice of the child and take this into consideration when taking decisions. However, there may be circumstances where we override the students wishes and feelings to act in their best interests e.g. in case of CSE where, as a result of perpetrator grooming, the student does not want any intervention.

Contextual Safeguarding/Extra Familial Harm is an approach to understanding, and responding to, young people's experiences of significant harm beyond their families. It recognises that the different relationships that young people form in their neighbourhoods, schools and online can feature violence and abuse. Parents and carers have little influence over these contexts, and young people's experiences of extra-familial abuse can undermine parent-child relationships. For example online safety, CSE, CCE, drug use, mental health issues.

There are four categories of abuse: physical abuse, emotional abuse, sexual abuse and neglect. However, it is important to remember that children can be abused outside their family home.

Physical abuse

Physical abuse may involve hitting, shaking, throwing, poisoning, burning or scalding, drowning, suffocating or otherwise causing physical harm to a child. Physical harm may also be caused when a parent or carer fabricates the symptoms of, or deliberately induces, illness in a child. (This used to be called Munchausen's Syndrome by Proxy, but is now more usually referred to as fabricated or induced illness).

Emotional abuse

Emotional abuse is the persistent emotional maltreatment of a child such as to cause severe and persistent adverse effects on the child's emotional development. It may involve conveying to a child that they are worthless or unloved, inadequate, or valued only insofar as they meet the needs of another person. It may include not giving the child opportunities to express their views, deliberately silencing them or 'making fun' of what they say or how they communicate. It may feature age or developmentally inappropriate expectations being imposed on children. These may include interactions that are beyond a child's developmental capability, as well as overprotection and limitation of exploration and learning, or preventing the child participating in normal social interaction. It may involve seeing or hearing the ill-treatment of another. It may involve serious bullying (including cyber bullying), causing children frequently to feel frightened or in danger, or the exploitation or corruption of children. Some level of emotional abuse is involved in all types of maltreatment of a child, although it may occur alone.

Sexual abuse

Sexual abuse involves forcing or enticing a child or young person to take part in sexual activities, not necessarily involving a high level of violence, whether or not the child is aware of what is happening. The activities may involve physical contact, including assault by penetration (for example, rape or oral sex) or non-penetrative acts such as masturbation, kissing, rubbing and touching outside of clothing. They may also include non-contact activities, such as involving children in looking at, or in the production of, sexual images, watching sexual activities, encouraging children to behave in sexually inappropriate ways, or grooming a child in preparation for abuse (including via the internet). Sexual abuse is not solely perpetrated by adult males. Women can also commit acts of sexual abuse, as can other children.

Position of Trust

The age of consent for sexual activity is 18 years old if you are in a position of trust over that child. See abuse of position of trust section earlier in this policy.

Neglect

Neglect is the persistent failure to meet a child's basic physical and/or psychological needs, likely to result in the serious impairment of the child's health or development. Neglect may occur during pregnancy as a result of maternal substance abuse. Once a child is born, neglect may involve a parent or carer failing to:

- provide adequate food, clothing and shelter (including exclusion from home or abandonment);
- protect a child from physical and emotional harm or danger;
- ensure adequate supervision (including the use of inadequate care-givers); or
- ensure access to appropriate medical care or treatment. It may also include neglect of, or unresponsiveness to, a child's basic emotional needs.

Wakefield Neglect Toolkit – will be consulted to assess level of neglect in all cases and certainly before any referral is made regarding Neglect.

<https://www.wakefieldscp.org.uk/professionals-and-practitioners/neglect-strategy/>

Definitions taken from *Working Together to Safeguard Children* (HM Government, 2018).

Grooming

Grooming is when someone builds an emotional connection with a child to gain their trust for the purposes of abuse such as exploitation. Children and young people can be groomed online or face-to-face, by a stranger or by someone they know - for example a family member, friend or school staff. Groomers may be male or female. They could be any age.

Many children and young people don't understand that they have been groomed or that what has happened is abuse.

Indicators of abuse

Physical signs define some types of abuse, for example, bruising, bleeding or broken bones resulting from physical or sexual abuse, or injuries sustained while a child has been inadequately supervised. The identification of physical signs is complicated, as children may go to great lengths to hide injuries, because they are ashamed or embarrassed, or their abuser has threatened them or they don't want the abuser to get into trouble. It is also quite difficult for anyone without medical training to categorise injuries into accidental or deliberate with any degree of certainty.

However, children may have no physical signs or they may be harder to see (e.g. bruising on black skin) therefore staff need to also be alert to behavioural indicators of abuse.

A child who is being abused or neglected may:

- have bruises, burns, fractures or other injuries which do not have a plausible explanation. E.g., bruises on babies who are not yet mobile, bruises on cheeks, ears, palms, arms, feet, back, buttocks, tummy, backs of legs, bruises in clusters, bruises with finger/belt marks, cigarette burns.
- challenge authority, have outbursts of anger
- be reckless with regard to their own or other's safety
- show signs of pain or discomfort
- keep arms and legs covered, even in warm weather
- be concerned about changing for PE or swimming
- display a change in behaviour – from quiet to aggressive, or happy-go-lucky to withdrawn
- display affection or attention seeking behaviour (may actually be attachment seeking) behaviour
- regularly flinch to sudden but harmless actions e.g. raising a hand
- look unkempt and uncared for
- change their eating habits
- have difficulty in making or sustaining friendships
- appear fearful
- self-harm incl. head banging, eating disorders
- frequently miss school or arrive late
- show signs of not wanting to go home
- display violence/sexualised behaviour towards animals, toys, peers
- regress to younger child behaviour
- become disinterested in their school work
- be constantly tired or preoccupied
- be wary of physical contact
- be involved in, or particularly knowledgeable about drugs or alcohol
- display sexual knowledge or behaviour beyond that normally expected for their age.
- have unexplained gifts/money/mobile phones or are over secretive online
- have low self esteem
- steal or scavenging compulsively
- overly affectional to strangers or people they haven't known for very long
- traumatic mutism

Responses from parents that may cause concern;

- Unexpected delay in seeking treatment – medical, dental which is obviously needed
- Denial of any injury
- Explanations that differs from that of the child e.g. for bruising
- Claims of falls/fits etc. that never happen in school
- Unrealistic expectations or constant complaints about the child
- Uninterested in child
- Alcohol /drug misuse
- Mental health issues which affect parenting
- Requesting removal of child
- Domestic abuse.

Disabled children; other signs to consider

- Force feeding
- Over medication
- Bruising if non mobile
- Poor toileting arrangements
- Lack of stimulation
- Unjustified use of restraint
- Rough handling
- Unwilling to learn child's means of communication
- Ill-fitting equipment
- Misappropriation of child's finances
- Invasive procedures
- Non consideration of child's dignity.

See poster on Safeguarding Noticeboards for further signs and indicators.

Individual indicators will rarely, in isolation, provide conclusive evidence of abuse. They should be viewed as part of a jigsaw, and each small piece of information will help the DSL to decide how to proceed.

It is very important that staff report and record their concerns as soon as possible- they do not need 'absolute proof' that the child is at risk before taking action.

Impact of abuse

The impact of child abuse should not be underestimated. Many children do recover well and go on to lead healthy, happy and productive lives, although most adult survivors agree that the emotional scars remain, however well buried. For some, full recovery is beyond their reach, and research shows that abuse can have an impact on the brain and its development. The rest of their childhood and their adulthood may be characterised by anxiety or depression, self-harm, eating disorders, alcohol and substance misuse, unequal and destructive relationships and long-term medical or psychiatric difficulties.

Our staff are trained in ACEs – Adverse Childhood Experiences. They understand and work towards trauma informed practice.

Adult Survivor helpline -see appendix.

Taking Action

It is the responsibility of all staff (employed in any capacity at school) to report and record their concerns as soon as possible to a member of the Safeguarding Team. A DSL will be available at all times, within the school day, for staff to speak to. Volunteers and work experience students will have their responsibility explained to them as part of their induction.

We actively encourage a 'never do nothing' attitude if staff have a concern about a child and promote discussion with DSL if in any doubt. Abuse of a child is never acceptable. We will ensure we do not have a culture where low standards are considered acceptable or viewed as 'normal for' a family or community.

Any child, in any family in any school could become a victim of abuse. Staff should always maintain an attitude of "it could happen here" and remain professionally curious.

Key points for staff to remember for taking action are:

- If an emergency, take the action necessary to help the child, for example, call 999 or seek medical attention.
- **REPORT your concern to the DSL as soon as possible.**
- **Complete a RECORD of your concern, using a professional tone and language on CPOMS** and immediately pass on to a DSL. If you need assistance with this please speak to a DSL.
- Do not start your own investigation
- Share information on a need-to-know basis only – do not discuss the issue unnecessarily with colleagues, friends or family.
- Seek support for yourself if you are distressed, see helplines in contacts section.
- Ask for feedback and if there are no improvements push for reconsideration. See escalation section.

The DSL team will discuss the concern and agree a course of action. The progress of which will be monitored during DSL team peer supervision meetings.

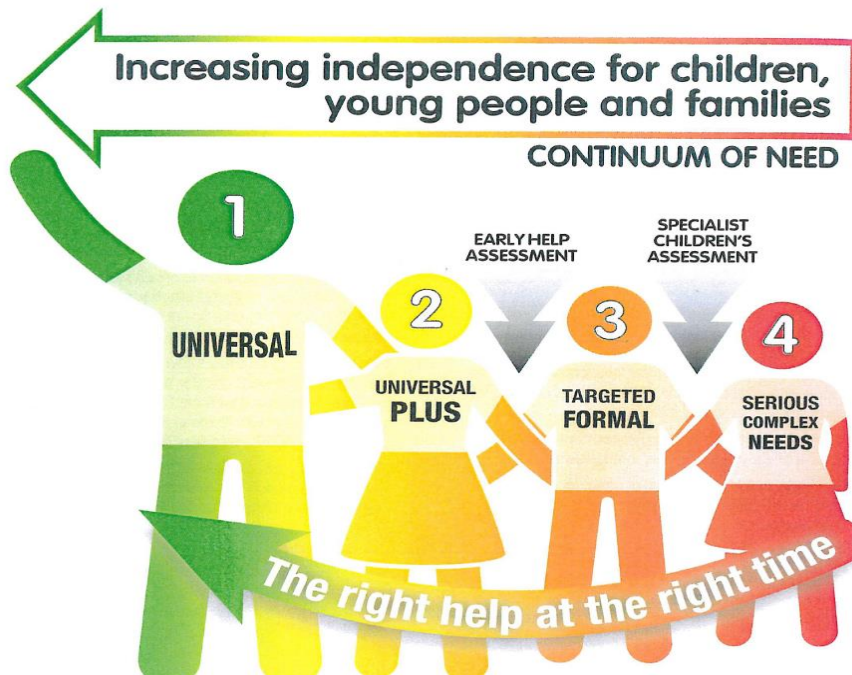
See flowchart in Keeping Children Safe in Education Part 1.

Levels of Need

Wakefield has a Continuum of Need for children and families who need support, this ranges from Level 1 to level 4. It is worth noting that a cause for concern does not always require a Level 4 response, it may be the family need a lower level of support to help the situation.

Wakefield Families Together website provides lots of advice and support – Early help;
[Wakefield Families Together – Wakefield Families Together](#) This information can also be found on our website.

The Early Intervention Prevention Service and Team Around the School (TAS) arrangements/school link workers are able to signpost school staff and offer support



Level 1 – Universal services are meeting the needs – no extra intervention needed.

Level 2 – For example a universal service is providing extra support, or have referred to one other single agency. Schools can use Signs of Safety to assess at this level.

Level 3 – Multi agency approach to support. Multi agency early help/SoS assessment. Children First Hub and TAS arrangements may be able to support.

Level 4 – Statutory intervention and assessment is needed where child is at risk or currently suffering significant harm. Social care/ police assess, investigate and lead at this level.

Schools have a duty to intervene early and support however it is not schools responsibility to investigate or decide whether a child has been abused. Schools do not have the powers to investigate child protection concerns.

Local procedures for specific issues:

If you are concerned about a pupil's welfare

There will be occasions when staff may suspect that a pupil may be at risk, but have no 'real' evidence. The pupil's behaviour may have changed, their artwork could be bizarre, they may write stories or poetry that reveal confusion, distress or mental health issues or their behaviour may have changed. In these circumstances, **staff will give the pupil the opportunity to talk**. The signs they have noticed may be due to a variety of factors, for example, a parent has moved out, a pet has died, a grandparent is very ill.

Staff are asked to be professionally curious in these situations asking the pupil if they are OK, if they are worried about anything or if they want to talk.

Staff should record these early concerns. If the pupil does begin to reveal that they are being harmed, staff should follow the disclosure/allegation advice.

Following an initial conversation with the pupil, if the member of staff remains concerned, they should discuss their concerns with the DSL.

Notifying Parents

The school will normally seek to discuss any concerns about a pupil with their parents, with consideration of including fathers as well as mothers. This must be handled sensitively therefore staff will not discuss safeguarding issues with parents until they have consulted with the DSL. In most cases the DSL will be in the most informed position to make contact with the parent in the event of a concern, suspicion or disclosure/ allegation.

However, if the school believes that notifying parents could increase the risk to the child or exacerbate the problem, advice will first be sought from school link workers / Social Care MASH. Best practice for all agencies is to work alongside and openly with parents in any concerns about their children, however consent is not required to refer to social care if informing the parents puts the child at more risk, e.g. in case of forced marriage.

We will be alert if parents and students 'stories' differ in any way e.g. with regards to how an injury was caused and will ensure this is noted and shared with other agencies as appropriate.

If parents have any queries regarding safeguarding they are encouraged to contact a DSL.

If the concern is low level and can be dealt with through the pastoral support in school (Level 2) a DSL will initiate early intervention to;

Use a restorative approach and engage with the parents/carers as soon as possible (unless the situation is so serious that would put the student at increased risk.) We then can evidence quick action was taken and the length of time of involvement.

We will invite the parents/carers into school for a meeting to demonstrate professional concerns and discuss a supportive working partnership for the best interests of the student (e.g. breakfast club, additional in school support)

At this meeting we will discuss the plan of next action should the situation not improve and offer signposting to other local services.

We will record all contacts with the family, dates and times, including phone calls/letters.

We will then monitor the student closely - behaviour/concerns/interaction with peers and parents/academic progress etc. This will demonstrate the frequency of concerns and help to build patterns.

If necessary, the school will assess using the Signs of Safety framework – what are we worried about?, what's working well?, what needs to happen? (Including all subsections, e.g. complicating factors) and then scaling.

If school needs further help (i.e. move to level 3) other agencies/hub link worker will be contacted and if issues escalate the social worker link workers can be contacted or if necessary a referral made to social care/MASH (level 4)

Risk assessments may be required in certain circumstances e.g. HSB. Schools can use a general risk assessment template and may wish to consult with other agencies for additional support and input.

The Wakefield Neglect toolkit will be considered in any cases of Neglect.

<https://www.wakefieldscp.org.uk/professionals-and-practitioners/neglect-strategy>

It is important to continually reassess concerns if there are no improvements.

Dealing with Disclosures/Allegations

It takes a lot of courage for a child to disclose that they are being abused. There are many reasons why they may be blocked from telling including -they may feel ashamed, particularly if the abuse is sexual; their abuser may have threatened what will happen if they tell; they may have lost all trust in adults;

or they may believe, or have been told, that the abuse is their own fault.

If a pupil talks to a member of staff about any risks to their safety or wellbeing, **the staff member will need to let the pupil know that they must pass the information on** – staff are not allowed to keep secrets. The point at which they tell the pupil this is a matter for professional judgement. If they jump in immediately the pupil may think that they do not want to listen, if left until the very end of the conversation, the pupil may feel that they have been misled into revealing more than they would have otherwise.

Bear in mind that in some cases children may tell ‘half a truth’ to test out how information may be handled by the listener. Children can also withdraw disclosures later if they feel things have gotten out of their control. Effective communication and relationship building with children will help in these situations.

During their conversations with the pupils it is best practice for staff to:

- Focus on listening rather than giving advice
- Allow pupils to speak freely
- Remain calm and not overreact – the pupil may stop talking if they feel they are upsetting their listener
- Give reassuring nods or words of comfort –‘I want to help’, ‘This isn’t your fault’, ‘You are doing the right thing talking to me’
- Not be afraid of silences, and allow space and time for pupil to continue, staff will recognise the barriers the pupil may have had to overcome to disclose.
- Clarifying or repeating back to check what they have heard if needed but will not lead the discussion in any way and *will not* ask direct or leading questions – such as whether it happens to siblings too, or what does the pupil’s mother think about it.
- Use questions such as Tell me what happened.....? Is there anything else you want to tell me?
- At an appropriate time tell the pupil that in order to help them, the member of staff must pass the information on
- Not automatically offer any physical touch as comfort. It may be anything but comforting to a child who has been abused. This will be case and age specific. If it is appropriate and in the child’s best interest, the member of staff will use safe touch following advice given in Safer Working Practice guidelines and training.
- Remember professional boundaries and not share personal experiences or information such as ‘that happened to me’
- Avoid admonishing the child for not disclosing earlier. Saying things such as ‘I do wish you had told me about this when it started’ or ‘I can’t believe what I’m hearing’ may be the staff member’s way of being supportive but may be interpreted by the child to mean that they have done something wrong
- Not pass judgement on the perpetrator
- Tell the pupil what will happen next. The pupil may agree to go with you to see the Designated Safeguarding Lead. Otherwise let them know that you will be consulting them.
- Write up their conversation as soon as possible on the record of concern form or CPOMS and hand it to the designated lead
- Seek support from the DSL Team/helplines in contacts section if they feel distressed.

Staff should be aware that SEND students may face additional safeguarding challenges and any barriers to disclosure etc. should be removed.

Records and Monitoring

Why recording is important

Our staff will be encouraged to understand why it is vital that recording is timely, comprehensive and accurate.

CPOMS can be used to record a cause for concern, however, staff MUST alert DSL's of a safeguarding concern and not rely on the electronic system and presumption that it has been read or actioned.

Any concerns about a child will be recorded in a professional manner and passed to a DSL as soon as possible. All records will provide a factual and evidence based account and there will be accurate recording of any actions. Records will be signed, dated and timed. The DSL team will then analyse this information.

We will seek the Child's voice/opinion and ensure this is noted in the records.

At no time will a member of staff take photographic evidence of any injuries or marks to a child's person. The body map will be used in accordance with recording guidance.

It may be appropriate on receipt of a concern for a DSL to open a secure safeguarding file and start a chronology page. This will help in building patterns and decision making.

We will feedback to the staff member any actions, however this will be on a need to know basis. It may not be appropriate for staff members to know full details.

The safeguarding file

The establishment of a safeguarding file is an important principle in terms of storing and collating information about children which relates to either a safeguarding concern or an accumulation of welfare concerns which are outside of the usual range of concerns in ordinary life events.

It needs to be borne in mind that what constitutes a 'concern' for one child may not be a 'concern' for another and the particular child's circumstances and needs will differ i.e. a child subject to a child protection plan, looked after child, Child in Need may be looked at differently to a child recently bereaved, parental health issues etc. We will therefore use professional judgement when making this decision as will have clear links and discussions between pastoral staff and DSL's.

This file will be kept separately from the main pupil file and **will be held securely only to be accessed by appropriately trained DSL's. All staff will be made aware of children who have a safeguarding file or who are open to social care due to safeguarding concerns.**

The school will keep written records of concerns about children even where there is no need to refer the matter to external agencies immediately. Each child will have an individual file i.e. no family files.

All incidents/episodes will be recorded e.g. phone calls to other agencies, in the chronology with more detail and analysis in the body of the file. This will help build a picture and help the DSL in analysis and action, which may include no further action, monitoring, whether an Early Help Assessment should be undertaken, or whether a referral should be made to other agencies - Social Care MASH/Children First Hubs/TAS in line with the Continuum of Need document (see link in appendix) and reflecting the Signs Of Safety approach. **(see checklist on WSCP education page).**

In cases where there is multi agency involvement - meetings and plans, actions and responsibilities shall be clarified and outcomes recorded.

In some cases, files will be made available for external scrutiny for example by a regulatory agency or because of a serious case review or audit.

Records will be kept up to date and **reviewed regularly by the DSL** to evidence and support actions taken by staff in discharging their safeguarding arrangements.

The DSL leads a weekly meeting with the Safeguarding Team. Updates on all current cases are included with the meeting. The Safeguarding Team receives supervision on a termly basis from Maria Collins Donnelly.

The file can be non-active in terms of monitoring i.e. a child is no longer LAC, subject to a child protection plan. If future concerns then arise it can be re-activated and indicated as such on the front sheet and on the chronology as new information arises.

If the child moves to another school, the file will be securely sent or taken, to the DSL at the new establishment/school and a **written receipt will be obtained**. There will be a timely liaison between each school's DSL to ensure a smooth and safe transition for the child. We will retain a copy of the chronology to evidence actions, in accordance with record retention guidance. CPOMS records will be transferred electronically with the usual safeguards applied. <https://learning.nspcc.org.uk/research-resources/briefings/child-protection-records-retention-storage-guidance>

Child protection records may be exempt from the disclosure provisions of the Data Protection Act, which means that children and parents do not have an automatic right to see them in certain circumstances. If any member of staff receives a request from a pupil or parent to see child protection records, they will refer the request to the Headteacher, who will consult information governance.

Referral to Social Care MASH (Level 4)

A DSL will make a referral to Social Care MASH if it is believed that a pupil is suffering or is at risk of suffering significant harm – Level 4 on the Continuum of Need. In DSL absence, or if there is a disagreement, anyone can make a referral. If in doubt, if thresholds are met, the link social worker can be contacted, however if this causes any delay we will refer directly.

A phone call must be made initially before a referral form is filled out. There is a DSL referral checklist and referral form available on WSCP safeguarding for schools' webpage. Social care should inform the DSL of the outcome within one working day. If this does not happen the DSL should follow this up in the following days and escalate if required.

If there is already a social worker assigned to this case -for safeguarding reasons, the social worker should be contacted directly.

The pupil (subject to their age and understanding) and the parents will be told that a referral is being made, unless to do so would increase the risk to the child.

The DSL will then be expected to take part in assessments, strategy meetings, case conferences etc. as and if required.

Reports for meetings will be shared with parents, unless there is good reason not to and reports will be sent to the appropriate meeting chair if the DSL cannot attend in person.

The Wakefield Neglect toolkit will be considered in any cases of Neglect before referrals are made to other agencies: <https://www.wakefieldscp.org.uk/professionals-and-practitioners/neglect-strategy/>

Escalation and Professional Disagreement

If the situation does not appear to be improving or there is any professional disagreement with the outcome, the school will press for reconsideration and if necessary follow WSCP professional disagreement procedure.

http://westyorkscb.proceduresonline.com/chapters/p_res_profdisag.html?zoom_highlight=professional+disagreement

Any member of staff can refer to other agencies in exceptional circumstances i.e. in an emergency or when there is a genuine concern that action has not been taken.

Referral to Police

Remember if a criminal offence has occurred to contact the police 101 or 999 as appropriate. It may be useful to state which department we require e.g. child safeguarding unit / CVE team / indecent images team. If we believe a child is being radicalised, we will refer to the Prevent police officer using the referral form on the WSCP education page.

When to Report to Police guidance;

[2491596 C&YP schools guides.indd \(npcc.police.uk\)](#)

We understand that if police are interviewing any students, as they suspect them of a crime, that an appropriate adult must be present e.g. parent.

Local partnership intelligence portal PIP – to report intelligence -does not replace usual procedures if child is at risk.[Partnership Intelligence Portal | West Yorkshire Police](#)

Home Visits

When our staff are required to do home visits we will follow best practice and consult the checklist

[Schools & Colleges Key Links & Resources • Wakefield Safeguarding Children \(wakefieldscp.org.uk\)](#)

Confidentiality and information sharing

Staff will only discuss concerns with the Designated Safeguarding Lead, Headteacher or chair of governors (depending on who is the subject of the concern). That person will then decide who else needs to have the information and they will disseminate it on a 'need-to-know' basis.

We will normally seek to discuss any concerns about a pupil with their parents. This must be handled sensitively and the DSL will be in the most informed position to make contact with the parent in the event of a concern, suspicion or disclosure/allegation.

However, if we believe that notifying parents could increase the risk to the child or exacerbate the problem, advice will first be sought from Social Care MASH.

The Seven Golden Rules for Safeguarding Information Sharing

- Data Protection/Human rights laws are not a barrier.
- Be open and honest. (unless unsafe or inappropriate)
- Seek advice. (anonymise if necessary)
- Share with consent if appropriate.
- Consider safety and wellbeing.
- Necessary, proportionate, relevant, adequate, accurate, timely and secure.
- Keep a record of decision and reason for it.

[Information sharing advice for safeguarding practitioners - GOV.UK \(www.gov.uk\)](#)

[Data protection: toolkit for schools - GOV.UK \(www.gov.uk\)](#)

Data protection legislation does not prevent school staff from sharing information with relevant agencies, where that information may help to protect a child. Ideally information sharing will be done in writing so that there is an evidence trail however there may be occasions where this method is too slow. **In cases where agencies such as MASH (Multi Agency Safeguarding Hub) ring the school requesting information reception staff will take a message and inform a DSL immediately**, the DSL will ensure they can identify who is requesting the information before sharing and then record what has been shared, when, why and with whom.

Child protection records may be exempt from the disclosure provisions of the Data Protection, which means that children and parents do not have an automatic right to see them in certain circumstances. However, it will be usual practice for parents to have been informed of any concerns at the time. If any member of staff receives a request from a pupil or parent to see child protection records, they will refer the request to the Headteacher who will consult with information governance.

Any personal safeguarding information shared with external agencies will be done so securely e.g. by secure email, password protected or recorded delivery.

Local & National Contact Details

Wakefield Safeguarding Children Partnership (WSCP)	Home page • Wakefield Safeguarding Children (wakefieldscp.org.uk)
Safeguarding Training Page specific to schools/colleges	Wakefield Safeguarding Children Partnership Wakefield Traded Services
Wakefield Social Care MASH	Phone; 0345 850 3503 Consultation via phonecall is necessary before submitting a referral form Minicom: 01924 303450 (type talk welcome) Email; social_care_direct_children@wakefield.gov.uk
School's Early Intervention and Prevention EIP (was hub worker)	John Rose 07554 437400 jrose@wakefield.gov.uk
School's Link Social Worker	Katherine Horseman 07747 790932 khorseman@wakefield.gov.uk
PCSO	Craig Briggs craig.briggs2@westyorkshire.police.uk
Child Safeguarding Unit	wakefield.sguchild@westyorkshire.police.uk
CVE Police Team	01924 303570 cveteam@wakefield.gov.uk
Local Authority Designated Officer (LADO)	01977 727032 lado.referrals@wakefield.gov.uk
Safeguarding Advisor for Education	Vicky Maybin - 07788 743527 vmaybin@wakefield.gov.uk

Future in Mind – Mental Health Practitioner	Primary Practitioner: Sara Kendrick - 01924 316950 Sara.Kendrick@swyt.nhs.uk
CAMHS Single point of access	01977 735865 https://www.southwestyorkshire.nhs.uk/services/camhs-wakefield/
Wakefield Resilience Framework;	https://www.riskandresilience.org.uk/
Wakefield Continuum of Need	Key Safeguarding Forms, Tools, Standards & Frameworks • Wakefield Safeguarding Children (wakefieldscp.org.uk)
Wakefield Families Together website	Wakefield Families Together – Wakefield Families Together
Local Family Hub	Family Hubs – Wakefield Families Together
Local Youth Hub	Youth Hubs – Wakefield Families Together
Child Safeguarding Unit	wakefield.sguchild@westyorkshire.pnn.police.uk
Wakefield School nursing/ Health visiting service;	School Nurse teams - Wakefield - BDCT Health visiting - Wakefield - BDCT
Wakefield District Domestic Abuse Service WDDAS	http://www.wakefield.gov.uk/health-care-and-advice/adults-and-older-people-services/domestic-abuse 0800 915 1561 domesticabuse@wakefield.gov.uk
Wakefield Spectrum	RSE – Spectrum Community Health CIC (spectrumhealth.org.uk) Child Sexual Exploitation – Spectrum Community Health CIC (spectrumhealth.org.uk)
Prevent – Wakefield Community Safety Team	Prevent in Wakefield - Wakefield Council
Child Missing Education Officers	Marina Oldreive, Educational Welfare Officer 01924 307467
Wakefield Education Welfare	Education Welfare Service - introduction - Wakefield

service;	<p style="text-align: center;">Council</p> <p style="text-align: center;">Elective Home Education - Wakefield Council</p> <p style="text-align: center;">Children Missing Education - Wakefield Council</p>
Virtual Head for CIC	<p style="text-align: center;">Jackie Roper</p> <p style="text-align: center;">jroper@wakefield.gov.uk</p>
Wakefield Local Offer – for children with SEND and their families	<p style="text-align: center;">http://wakefield.mylocaloffer.org/Home</p>
NSPCC Speak Out Stay Safe Service for Primary Schools	<p style="text-align: center;">Speak out Stay safe programme NSPCC Learning</p> <p style="text-align: center;">Emma Hobson</p> <p style="text-align: center;">Schools Coordinator</p> <p style="text-align: center;">emma.hobson2@nspcc.org.uk</p> <p style="text-align: center;">Tel: 0161 3934421 Mobile: 07562 205039</p>
Drug support for young people	<p style="text-align: center;">https://www.turning-point.co.uk/</p>
Wakefield voluntary sector Young Lives Consortium	<p style="text-align: center;">http://www.ylc.org.uk/</p>
Wakefield Adult Services	<p style="text-align: center;">http://www.wakefield.gov.uk/health-care-and-advice/adults-and-older-people-services</p>
Wakefield Well Women Centre	<p style="text-align: center;">http://www.wellwomenwakefield.org.uk/</p>
Wakefield District Housing WDH	<p style="text-align: center;">https://www.wdh.co.uk/ContactUs/ OneCALL 0345 8 507 507</p>
School Nurse	<p style="text-align: center;">01924 327540</p>
Education Welfare Officer	<p style="text-align: center;">Jotty Wagner</p> <p style="text-align: center;">ews@wakefield.gov.uk</p>
Educational Psychologist	<p style="text-align: center;">Christa Rayne</p> <p style="text-align: center;">crayne@wakefield.gov.uk</p>
SEN Team Worker	<p style="text-align: center;">Nea Bond</p> <p style="text-align: center;">neabond@wakefield.gov.uk</p>
Wakefield Signs of Safety Webpage	<p style="text-align: center;">http://www.wakefieldscp.org.uk/professionals-and-practitioners/signs-of-safety/</p>
Wakefield Youth Work Team	<p style="text-align: center;">https://wfyouth.co.uk/</p>
Wakefield Young Carers	<p style="text-align: center;">Young Carers - Wakefield Council</p>
NSPCC Helpline	<p style="text-align: center;">0808 800 5000</p>

NSPCC Whistleblowing Helpline	0800 028 0285
NSPCC Report Abuse in Education	0800 136 663
Counter Terrorism Helpline	0800 789 321
Forced Marriage Unit	020 7008 0151 fmufco.gov.uk
National Association for People Abused in Childhood (NAPAC)	0808 801 0331 https://napac.org.uk/
Stop It Now	Leading charity working in the field of sexual abuse. Also provides support for people who are worried about their own thoughts or behaviour towards children. 0808 1000 900 http://www.stopitnow.org.uk/
Professional Online Safety Helpline	0844 3814772
National Services - Domestic Abuse	Domestic Violence & Abuse · Emergency Injunction Service (ncdv.org.uk)
Safeguarding Information Webpage for Schools	TRAINING, TEMPLATES, AUDIT, RESOURCES, MANAGING ALLEGATIONS, EDUCATION BOARD REPS. https://www.wakefieldscp.org.uk/education/
Police	If a criminal offence has occurred contact police via 101 or 999 as appropriate.
CVE Police Team	cveteam@wakefield.gov.uk 01924 303570
West Yorkshire Police Partnership Intelligence Portal (PIP)	to report intelligence -does not replace usual procedures if child is at risk. (schools have one sign in all DSL's have access to) Partnership Intelligence Portal West Yorkshire Police