



2022

Sixth Form Prospectus



"The school has been highly successful in creating a positive, caring and inclusive ethos and provides outstanding care, support and guidance for all pupils."

- ESTYN

Prospectws y Chweched Dosbarth



☎ 01978 760 238

✉ main@castellalun.flintshire.sch.uk

☎ 01978 760 935

🌐 www.castellalun.com

🐦 @CastellAlun

Castell Alun High School, Fagl Lane, Hope,
Flintshire LL12 9PY

Contents / Cynnwys

- 3. Word of Welcome
- 4. The Castell Alun Experience
- 7. Why Castell Alun
- 12. Sixers Deli & Common Room
- 13. Trips
- 14. The Seren Network
- 15. Aiming High at Castell Alun
- 16. Other Information
- 19. Your Course Options

ENGLISH

- 21. English Language
- 22. English Literature

EXPRESSIVE ARTS

- 23. BTEC Sport
- 24. Drama & Theatre Studies
- 25. Music
- 26. Performing Arts
- 27. Physical Education

HUMANITIES

- 28. Geography
- 29. Health, Care & Child Care
- 30. History
- 31. Politics
- 32. Psychology
- 33. Religious Studies

LANGUAGES

- 34. Cymraeg
- 35. French
- 36. German
- 37. Spanish

MATHEMATICS

- 38. Further Mathematics
- 39. Mathematics

SCIENCE

- 40. Biology
- 41. Chemistry
- 42. Medical Science
- 43. Physics

TECHNOLOGY

- 44. Art & Design
- 45. BTEC National Business
- 46. Computer Aided Design
- 47. Computer Science
- 48. Criminology
- 49. Design & Technology
- 50. Economics
- 51. Food Science
- 52. Programme of Study
- 53. Application Form



"The school is highly successful in promoting exceptionally strong levels of pupil wellbeing. This has a significant impact on pupils' personal development and the standards that they achieve"

- ESTYN

Word of Welcome / Gair o Groeso

Thank you for your interest in joining our Sixth Form at Castell Alun.

This Prospectus will hopefully give you a flavour of life here and a clear understanding of the courses we offer and where they could lead.

We pride ourselves on the quality of our teaching, our outcomes and just as importantly our care, support and guidance for students throughout their post 16 education. As part of a large, happy and close knit community, our Sixth Form students work very hard academically but also enjoy a tremendous range of other opportunities including, trips, charity work, work experience, competitions and social

events and although these are more limited than we would like at present due to Covid restrictions, we have every intention of returning to normal practice as soon as we are permitted to do so.

A great majority of our Sixth Form students go on to study at the university of their choice with other students opting for prestigious higher apprenticeships, employment or college courses. We are very proud of our reputation and the academic and personal success of our students over the years. We value every student highly and aim to provide the best possible support and guidance in helping every learner to maximise his or her

potential, whichever path they choose upon successful departure from our school.

Whatever their next step, students remain a part of the Castell Alun family and we are always pleased to hear where life has taken them as they go on to enjoy successful careers in every walk of life.

I hope that you will enjoy our **Sixth Form Open Evening**, on **Thursday 27th January 2022**.

This will be an opportunity for you to engage with staff and students about the experiences on offer at Castell Alun.

Mr C. Ellis, Headteacher.



The Castell Alun Experience

The Sixth Form prospectus is designed to inform you as much as possible about the 'Castell Alun experience'. The next step in your education is an important one and you need to be informed, reassured and aware of the implications for your future.

The option lines are designed to cater for all future possibilities. We believe the combinations are relevant to students' future needs. They are provisional and we do expect some changes, due to class sizes and some clashes. We will be able to talk to those students who have

a clash of subjects and advise them accordingly. Please use this booklet to inform you of your possible future options. It should be used in conjunction with the Open Evening, individual interviews and Subject Guides. Do not hesitate to ask for further clarification on any issues you may feel relevant.

Kevin Davies Director of Sixth Form Studies / Assistant Head
kevin.davies@castellalun.flintshire.sch.uk

Lauren Robinson Sixth Form Assistant Student Development Manager
lauren.robinson@castellalun.flintshire.sch.uk

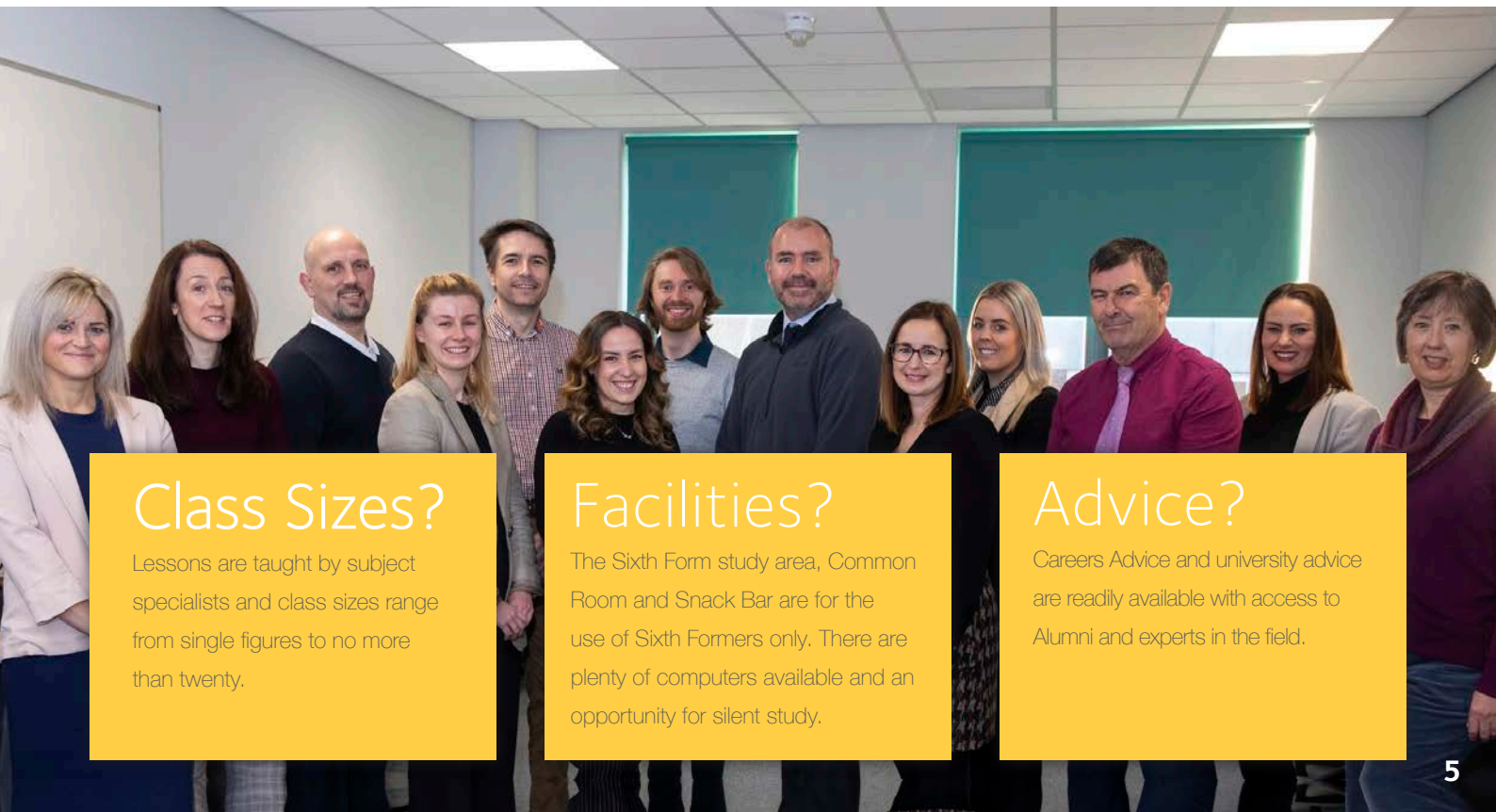
Nicole Trueman VESPA Systems and Wellbeing Co-ordinator



Access to Tutors/SDM?

Every day there is access to a Group Tutor, who will provide academic and non-academic support. The Director of Sixth Form Studies and the Assistant Director are based in the Sixth Form area and are available at all times, as part of our 'Open Door Policy'.

"All the teachers are so supportive. I feel comfortable to go to any of my subject teachers and ask for help whether it is about the subject or a personal matter. My opinions are always listened to. The support we receive is outstanding." - Student



Class Sizes?

Lessons are taught by subject specialists and class sizes range from single figures to no more than twenty.

Facilities?

The Sixth Form study area, Common Room and Snack Bar are for the use of Sixth Formers only. There are plenty of computers available and an opportunity for silent study.

Advice?

Careers Advice and university advice are readily available with access to Alumni and experts in the field.



Sixth Form Council

Each Tutor Group elect two representatives to sit on the Sixth Form Council.

The Council meets on a regular basis and will discuss issues such as the *Study Areas*, *Common Room* and *external events*. Two members of the Sixth Form Council will be co-opted to sit on the School Council. In addition to this there are Sixth Form committees connected to charity fun raising.

Student Ambassadors

The Senior Student Ambassadors are Sixth Form Students who have been chosen specifically to represent their peers. They are on the School Council and are Associate Governors. They are heavily involved with Student Voice and act as a link between the students and staff.

Students from other schools

Castell Alun is an 'open' Sixth Form. Students from other schools are welcome to study here.

Last year 30 students joined our school for Sixth Form from a total of 12 different secondary schools. These students enhance the Sixth Form and quickly become valued and integral members of the senior school.



Why Castell Alun?

We are a school with a Sixth Form therefore there are numerous opportunities to improve and enhance the skill set of each Sixth Form student as well as their C.V., for instance, coaching in the P.E. department, helping with Numeracy and Literacy lessons as well as being a Teaching Assistant in lessons.

"I chose Castell Alun because it offers subjects that weren't offered at other schools. In addition, the staff welcomed us with open arms and the atmosphere within school promotes growth and development."

- Student

"I chose Castell Alun sixth form for the support and new and exciting opportunities to develop skills both academically and non academically. Castell Alun has great facilities for sixth form with smaller class sizes allowing every child to reach their full potential."

- Student

"Castell Alun has a real community atmosphere and everyone seems friendly and willing to help."

- Student

"I chose Castell Alun as my sister comes to the school and she had said lots of nice things about it."

- Student

"I tried college but it wasn't for me. I chose sixth form here as I felt that it would support me more."

- Student

"One of the teachers that I met on the induction day helped me to come to the conclusion that this was the school for me."

- Student

See whats on offer...

The Sixth Form Area

The Sixth Form area offers spacious, modern study and recreational facilities.

It is an integral part of the school and the Common Room and Study Areas allow students a greater degree of independence and responsibility. Study will be timetabled as will free time.



Charity Work and Community Participation

Sixth Form students select a charity to support each year e.g. Operation Christmas Child, Pink Day, Nightingale House Hospice.

By virtue of team work and perseverance, sums of money are raised for the benefit of a selected charity. Students have a wide choice of community activities in which they can participate. They enjoy working with the wider community of which the school is a part. In this way, young people help those who are much less fortunate than themselves whilst learning vital planning skills in co-ordinating entire events.



Supervised Study

Included in the Sixth Form area are two distinct study areas, one for Year 12 and an additional area for Year 13. These study areas are both supervised and timetabled. Students can use their non-contact time to further their studies in an appropriate learning environment. Independent learning is a vital component of life in the Sixth Form

There is a suite of computers for all students to use to aid their studies. These facilities are open to the Sixth Form from 7.15 am to 6.00 pm and are used by many students outside the normal working hours of the school. This independent study, whilst supervised, enables students to plan their time effectively whilst building on their contact time with their teachers.



The Welsh Baccalaureate Advanced Qualification

The Welsh Baccalaureate is an exciting qualification that adds a valuable new dimension to the subjects and courses already available to students.

It combines personal development skills with a student's option choices to make one wider award that is valued by employers and universities.

The Welsh Government introduced the Welsh Baccalaureate to transform learning for young people in Wales.

It gives broader experiences than traditional learning programmes, to suit the diverse needs of young people.

Sixth Form students at Castell Alun participate in the Welsh Baccalaureate Qualification at Advanced Level.

The subject is a significant element of University offers.

Opportunities for Leadership

Sixth Form students are encouraged to develop their leadership skills by taking advantage of the opportunities that working with younger students allow.

For example, as part of the community participation element of the Welsh Baccalaureate, valuable experience for Sixth Form students is the 'Buddy' paired reading scheme with Year 7 students.

Many more opportunities for leadership are available within the Sixth Form, including involvement in lower school lessons as teaching assistants. This also provides valuable experience for a student's personal statement for UCAS.



Duke of Edinburgh

The Duke of Edinburgh Gold Award is offered in years 12 and 13. Expeditions are taken after the examination season, and have in recent years been to Snowdonia and the Lake District.

Students are fully supported throughout the two years to complete the various sections. It develops a range of skills and is highly regarded by universities and future employers.

"Participation rates in the extra curricular programme, which includes a wide range of sporting, academic and curricular activities, are very high"

ESTYN

Music / Drama



Various musical ensembles are available to the Sixth Form students.

Students take a leading role in many of the Drama and Music productions that take place within the school. Many students enjoy this aspect of extra curricular work and remain very loyal to whole school events. Sixth Form students often take an active part in performing at events which include our feeder primary schools.



Sport

A significant number of students from the Sixth Form have represented the school at County, National and International level in a variety of sports including:

BADMINTON, GYMNASTICS, CYCLING, HOCKEY, GOLF, NETBALL, RUGBY AND FOOTBALL

Sixth Form students are encouraged to coach younger children.

The various sports schemes allow students the opportunity to develop their coaching skills and to gather evidence for accreditation in their Welsh Baccalaureate.

Sixers Deli & Common Room

This facility, specifically for Sixth Form students, offers a wide range of tasty, reasonably priced, Deli style sandwiches and snacks from mid morning until early afternoon.

This facility is based in the Common Room where students can have their 'down time'. This initiative came about as a direct result of discussions with the Sixth Form Council to improve facilities.



Trips

If you want to discover learning outside the classroom, how about trips to ...

Berlin and Krakow with Humanities and German.

Italy, Liverpool, the North Wales Coast, the Dee Valley and Snowdonia with Geography.

London with English or

Art Galleries and Artist Studios with Art learning areas.

That's just a sample of what's on offer.



The Seren Network

The Seren Network supports high achieving Sixth Formers to reach their academic potential, through a programme of super-curricular activities.



"The opportunities provided by the Seren network enabled me to further explore my subjects and interests whilst gaining experience for my personal statement." - Ayla Hughes



As a member of the Flintshire / Wrexham partnership students will be given information, advice and guidance on how to make a competitive application to leading universities. The local Seren Hwb is a partnership of teachers from schools, and colleges in the area. They are

supported by leading universities, local government and the Welsh Government.

To qualify students must have achieved 5A* or equivalent in their GCSE examinations. For the academic year beginning September 2021, Castell Alun

had fifty seven students who achieved this benchmark.

For more information on the Seren Network and your local hub, visit the Seren Network website: www.gov.wales/seren

Aiming High at Castell Alun

The Russell Group

The Russell Group represents 24 leading UK universities which are committed to maintaining the very best research, an outstanding teaching and learning experience and unrivalled links with business and the public sector.

Russell Group universities play an important part in the intellectual life of the country and have a huge impact on the social, economic and cultural well - being of their regions. Their aim is to ensure that each university has the optimum conditions in which to flourish whilst continuing to make an impact through their world leading research and teaching.

Castell Alun students apply to and attend universities all over the U.K., including Russell Group universities. Where relevant, students are encouraged to apply to Russell Group universities and some of those universities also visit the school. Open days are used to enable students to meet the relevant staff whilst getting a 'feel' for each university.

Last year some 54 Castell Alun Students were successful in their application to Russell Group universities.



Due to centred determined grade processes for 2020-2021 school reporting examination data has been suspended.

Last year some **fifty four** Castell Alun students were **successful** in their **application** to **Russell Group** universities the length and breadth of the UK.

Other information Gwybodaeth Arall

Sixth Form Dress Code

Uniform requirement is relaxed in the Sixth Form but students are expected to set an example to younger children in school.

The following 'dress code' has been devised by the Sixth Form and we would appreciate wholehearted co-operation from students and their parents in this matter:

Appropriate T-shirts, polo shirts, rugby tops and shirts/ blouses are the norm, but we would ask that students refrain from showing a bare midriff or wearing a football shirt, tracksuit or items which may be considered offensive.

Sixth Form students are most welcome to wear smart jeans or in the summer tailored shorts.

These should not be too short or sports / swimming style shorts.

Please be aware that we are a Sixth Form within a school, and that Sixth Form students set examples for others to follow.

Admissions

Students wishing to access courses at Sixth Form must meet the following entry requirements:

AS courses:

A minimum of 5 A* - C grades at GCSE or BTEC.

A2 Courses:

At least an E grade on the corresponding AS course.

In all cases a good attendance record during KS4 education is required.

We do take into account extenuating circumstances.



Education Maintenance Allowance (EMA)

From September 2014, students in Wales may be eligible for an Education Maintenance Allowance, if you are aged 16, 17 or 18 years old on 31st August 2019 and are continuing to study full time or at least 12 hours per week in school.

If you are the only young person in full time education in your household and your household income is less than £20,817, then you could receive £30 per week.

If there are other young people in full time education, who also qualify for child benefit in your household, and your household income is less than £23,077 then you could receive £30 weekly.

Further information is available from:
www.studentfinancewales.co.uk/ema
or you can call 0845 602 8845



December

Individual Interviews with SDM

January

Year 11 - 12 Promotional Talks
Year 11 Mock Exams
27th January Open Evening

4th March

Application Form Deadline

27th June

Induction Day for External Students
(provisional)

20th August

GCSE Results: Support & Guidance

1st September

Sixth Form Enrolment

Throughout personal tours of the school can be arranged

Year 11 - 12 Transition Admissions Procedure

Your Course Options Eich Opsiynau Cwrs



What's Your Next Step...

Which Course to Follow?

Pa Gwrs I'w Ddilyn?

Your choice of subjects will be influenced by three interacting considerations:-

1. Which subjects do you enjoy?
2. Which subjects will produce your best exam results?
3. Which subjects are required for the career you have in mind?



Your present interest in a subject is usually a realistic guide to the choice you should make but beware!

Subjects can change substantially between Year 11 and the Sixth Form, concentrating on different aspects and demanding an alternative style of work.

Subjects you find dull now may be much more attractive to you at Sixth Form level and of course, vice versa.

You may also wish to study a subject not offered at GCSE.

It may be difficult to predict your summer exam results. While mock exams will give an indication, your **teachers** will know if you have the ability to study their subject.

Their advice is invaluable ...
Take advantage of it.

There are certain combinations of subjects that you must take if you wish to pursue specific careers. This requires specialist help which you can obtain from the Director of Sixth Form Studies and his team, Learning Managers and Subject Teachers.

English Language

Saesneg Iaith

English Language is an exciting and interesting course which gives you insight into how language connects to society. English language is a demanding course, however it gives you the freedom to explore your own topics and be creative in addition to learning evaluative approaches to the language surrounding us.

The course includes the study of how writers and speakers use language to suit different audiences and purposes, in the present day and in the past.

For example: We also look at how language is used electronically, in texting and on websites, and at how people communicate with each other in speech. Through the study of these topics you will develop your analytical skills and your knowledge and understanding of English vocabulary and grammar. English Language also enables students to develop their writing skills. Students learn to write in a variety of different forms. Both the AS and A2 Years involve studying theories about language, such as how children learn to speak and how and why language changes.

English Language is a great all round A level, showing a high level of communication skills, which can lead to a huge variety of degree choices and future careers, such as:

- **Media**
- **Business**
- **Languages**
- **Working with Children**
- **Management**
- **Journalism**
- **Language Therapy**
- **Teaching**

Qualification: **AS / A2 Level**

Exam Board: **WJEC**

Course Director: **Mrs Gemma Blakeley**

Subject Staff: **Mrs Gillian Roberts**
Mrs Natalie Spragg
Miss Ceri Roberts

Option: **1**



Qualification: **AS / A2 Level**

Exam Board: **WJEC**

Course Director: **Mrs Gemma Blakeley**

Subject Staff **Mr James Hadley**

Year 12 (AS): **Mrs Angharad Evans**

Mrs Gemma Blakeley

Miss Stephanie Batey

Subject Staff **Mr James Hadley**

Year 13 (A2): **Mrs Gemma Blakeley**

Option: **4**

English Literature

Llenyddiaeth Saesneg

Literature reflects, shapes and documents our world. It is a gateway to history, humanity and artistic endeavour throughout the centuries. If you choose to study English Literature at A level, you choose to study the novels, poetry and drama that have been at the heart of society.

If you are interested in literature and general reading, the analysis of ideas and attitudes, have good general knowledge and a willingness to debate, then English Literature will be the ideal subject for you. It is a popular, successful and enjoyable subject which has specific relevance to careers in teaching:

Because Advanced Level English Literature entails a sophisticated level of intellectual and academic discipline the subject is highly regarded as an entrance qualification for courses in Universities and Colleges.

It combines well with Law, Arts, Humanities, Social Sciences and Languages.

Possible career pathways include:

Teaching; journalism; law; management; administration and all aspects of the arts including radio, television, theatre and film industries.



BTEC Level 3 National In Sport Chwaraeon BTEC Lefel 3

Overall this subject is based on the interaction between the theory and practice of sport in industry and will provide an excellent foundation for students who wish to pursue careers in teaching and coaching, sports development, the leisure industry, recreational management, the health and fitness industry and professional sport.

This course is a mixture of examination based units and course work.

Students can opt for this subject as a Single Award or double award.

The National Certificate in Sport is worth one full A Level.

The Nation Diploma in Sport is worth 2 full A Levels.

Qualification: **Level 3**

Exam Board: **BTEC**

Course Director: **Mrs Sarah Thomas**

Subject Staff: **Mrs Sarah Thomas**
Mr Nick O'Connell
Mr Stephen Gadie

Option: **4**



Qualification: **AS / A2 Level**

Exam Board: **WJEC**

Course Director: **Mrs Rebecca Lloyd-Jones**

Subject Staff: **Mrs Rebecca Lloyd-Jones**

Option: **2**

Drama and Theatre Studies

Drama ac Astudiaethau Theatr

The A Level Drama and Theatre Studies course builds on the strengths of the GCSE Drama course covering all aspects of drama and theatre work.

The course will:

- Develop students' interests in drama and theatre as participants and informed members of an audience;
- Develop students' knowledge and understanding of major influences in theatre;
- Offer students a range of opportunities to develop drama and theatre skills creatively and imaginatively;
- Integrate theory and practice.

The subject develops understanding of drama and theatre, allowing students to establish highly toned analytical and creative skills and the ability to communicate effectively with others.

It is a popular, highly successful and enjoyable subject which has specific reference to careers in all aspects of the arts including radio, television, theatre and film industries, as well as management, public relations, teaching, journalism and administration.



Music

Cerddoriaeth

A level Music allows students to develop sufficient expertise for further study and to promote an appreciation and enjoyment of music. Whilst considerable commitment is required, the rewards are worthwhile. The deeper knowledge and appreciation of music gained will arm students with lifetime skills and give access to the wide ranging music scene which exists within school, locally and around the country.

Extra Curricular activities include:

- School, County, 4 Counties, North Wales and National ensembles
- Selected concert visits;
- Free Instrumental tuition and option to gain additional qualifications with Associated Board Practical Examinations.

Music combines well with many subject areas:

- As a Performing/Creative Art for closely related further study in Art, Dance and Drama;
- Increasingly with Sciences in the light of modern technology;
- Traditionally with English and Modern Languages.

Music may be studied at University or Music Conservatoire.

Careers to consider include teaching, performing, broadcasting, journalism, the recording industry, publishing, library work, retail trade, concert management, musical instrument technology, music therapy, music in the armed services, arts administration and many other avenues within the arts.

Qualification: **AS / A2 Level**

Exam Board: **WJEC**

Course Director: **Mr Andrew Searson**

Subject Staff: **Mr Andrew Searson**
Miss Katy Gittins

Option: **1**



"Our teachers create a fun and enjoyable environment in which to learn which helps to reduce the pressure on students."
- Harvey Shearer

Qualification: **Level 3**

Exam Board: **BTEC**

Course Director: **Miss Sharon Nesbitt**

Subject Staff: **Miss Sharon Nesbitt**
Mrs Lloyd-Jones

Option: **3**

Performing Arts

Celfyddydau Perfformio

Btec National Extended Certificate in Performing Arts – Equivalent to one A-Level

The Extended Certificate is for learners who are interested in learning about the performing arts sector alongside other fields of study, with a view to progressing to a wide range of higher education courses, not necessarily in performing arts. It is designed to be taken as part of a programme of study that includes other appropriate BTEC Nationals or A Levels.

Assessment is specifically designed to fit the purpose and objective of the qualification. It includes a range of assessment types and styles suited to vocational qualifications in the sector. These include a range of external, internal and synoptic assessments.

Evidence is in the form of ongoing practical assessments and a Performer's Reflective Journal.

There are three pathways to choose from: Dance, Drama or Production.

Dance Pathway	Drama Pathway	Production Arts Pathway
Key Units include: Developing Skills and Techniques for Live Performance, Performing Arts in the Community and Contemporary, Street and Jazz Techniques.	Key Units include: Acting Styles, Developing the Voice for Performance, Improvisation, Movement in Performance, Physical Theatre Techniques, Developing Skills and Techniques for Performance	Within Production there are four further pathways that can be taken and they are: Theatre Technology – Stage Lighting Design and Stage Sound Design Stage Management Costume Design Set Design



"I enjoy performing arts because your effort and dedication really pay off. When you give your all, your ideas and suggestions are listened to and respected. We have the opportunity to dance, choreograph, and perform in a safe and respectful environment." – Jack Davies

Physical Education

Addysg Gorfforol

A Level Physical Education takes a multidisciplinary approach in developing an understanding of many different areas of sport. This course allows students to build on existing knowledge and learn about new aspects of sport in detail including Exercise Physiology, Biomechanics, Coaching Process, Sports Psychology, Skill Acquisition and Sport in Society.

Students should be participating in a sport regularly and to a good standard as this course draws together theory and practical performances. Participation must be as a performer and as a coach or official in Year 12. Recorded evidence will be necessary.

Overall, this course is based on interaction of theory and practice of Physical Education and will provide an excellent foundation for students who wish to pursue a career in teaching and coaching, sports science, physiotherapy, sports development, the leisure industry, recreational management and professional sport.

Qualification: **AS / A2 Level**

Exam Board: **WJEC**

Course Director: **Miss Beccy Roberts**

Subject Staff: **Miss Beccy Roberts**
Mr Craig Hutchinson
Mr Nick O'Connell

Option: **1**



"I enjoy P.E. because we learn lots of different aspects of sport including Physiology, Sport Psychology and Skill Acquisition which are very interesting. I can also relate this to my own sport which has helped me perform better." – **Kai Welch**

Qualification: **AS / A2 Level**

Exam Board: **WJEC**

Course Director: **Mr A. Hodgson.**

Subject Staff: **Miss H. Rogers**
Mr J. Fowles.

Option: **2**

Geography

Daearyddiaeth

Geography is the study of the Earth and its human population. At A Level you will study the physical environment, the impacts of human activity and relationships between nations.

Course Summary:

AS Geography Year 12: Changing Places and Changing Landscapes.

A2 Geography Year 13: Global Systems and Global Governance.

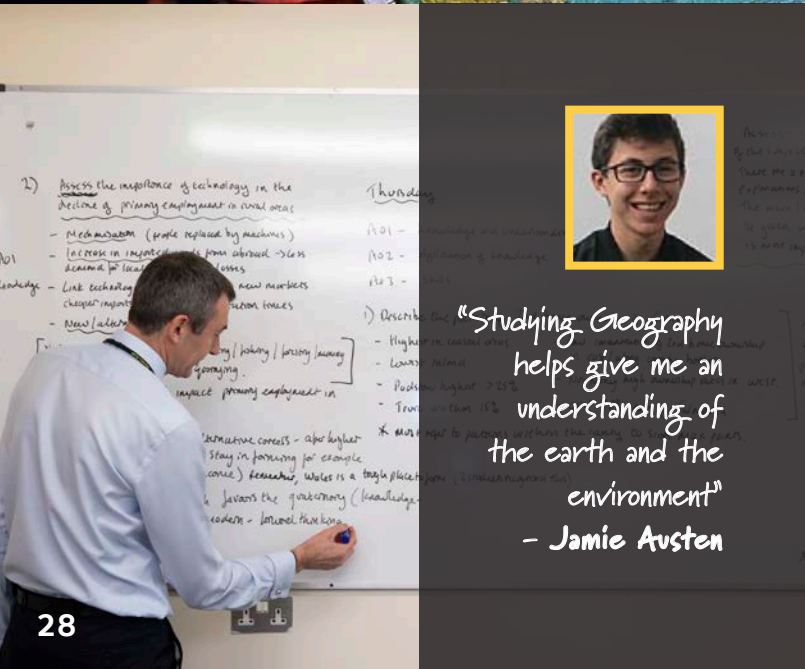
Contemporary Themes in Geography.

Independent Investigation.

A - Level geographers develop the key skills associated with research, problem-solving and analysis in both science and humanities. Assessment methods include data response questions and extended writing.

Fieldwork is an integral part of the course.

Given the diverse nature of the topics studied, A -Level Geography provides a firm foundation for further education and future careers.



Health, Care & Child Care Iechyd, Gofal a Gofal Plant

A Level Health and Social Care will comprise of four units in total over the two years of study. In Year 12 these are:

- Promoting health and wellbeing
- Supporting health, wellbeing and resilience in Wales

In Year 13, students follow the childhood pathway:

- Theoretical perspectives of children and young people's development
- Supporting the development, health, well-being and resilience of children and young people

Assessment is by means of 50% examination and 50% non-exam assessment.

Course content will include topics such as concepts of health and wellbeing, social and economic determinants of health, trends, strategies and health legislation, government initiatives, services to support health and wellbeing in Wales.

Progression from this subject equips students with the skills required for higher education and aims to create independent learners that can make informed decisions about further learning opportunities or continuing into related career choices. It complements a wide range of other A-level / BTEC/ Diploma courses and can lead to careers such as midwifery, nursing, physiotherapy, social care, education, counselling, occupational therapy, community and health development.

Qualification: **AS / A2 Level**

Exam Board: **WJEC**

Course Director: **Mrs Shan Williams**

Subject Staff: **Mrs Shan Williams
Miss Kelly Vaughan**

Option: **2**



Qualification: **AS / A2 Level**

Exam Board: **WJEC**

Course Director: **Miss Ffion Byrne**

Subject Staff: **Miss Sarah Edwards
Mr Kevin Davies
Mrs Helen Cadman
Miss Ffion Byrne
Miss Emma Edwards**

Option: **3**

History

Hanes

It is not a requirement that you have studied History as GCSE in order to take A Level History, as a number of the topics offered are likely to be new to most students. It is more important that you have an enquiring mind, an interest in the past and its relevance to current affairs and an ability to communicate your ideas effectively.

History isn't just about learning facts and dates, far from it! As well as studying those important periods in history and the fascinating effect they have had on the world, you will also develop a variety of skills which are highly coveted and of benefit beyond the study of History. Consequently, History complements the study of most other A Level subjects, from the other Humanities and English to Science and Maths.

Studying History will help develop skills in analysis and evaluation and communication, both oral and written. History is about solving puzzles, seeing the bigger picture, making connections and drawing conclusions. Studying History is about being perceptive and critical, knowing the difference between truth and opinion and about forming your own opinions using well supported and developed arguments.

It is due to the wide variety of skills that you develop through the study of History that Universities consider the subject in high regard. History is seen as a highly useful qualification for a variety of Higher Educational and Career choices, providing an excellent foundation for a number of popular careers, including journalism, law, business, accountancy and teaching, to name but a few.



Politics

Gwleidyddiaeth

Why study Politics? Simply because it affects everything you do! The age you can marry, drink alcohol, join the armed forces, vote, drive is all decided by politicians. They also decide how loudly you can play music, whether you stand up or sit down at football matches, what you study in school and so much more that affects your daily lives.

This course allows students to develop a good understanding of Welsh, British, and International politics. At a time of enormous political tension and change in the world, students will find the debates which are central to this subject fascinating. This subject is highly prized by universities and links well with other Humanities, English, Business and Law courses.

This course will appeal to those students who want to become better informed citizens and who have an interest and want to explore and develop their own political beliefs and opinions in particular. This course will appeal to students who want to know why Wales and the rest of the UK are governed as they are.

Students with AS or A2 Level Politics have a wide range of possible career and Higher Education opportunities open to them.

You will learn skills which are in great demand by employers and universities, such as:

- development of written and oral communication;
- development of problem solving and evaluation;
- researching and analysing information from different sources;
- working independently and as part of a group.

Qualification: **AS / A2 Level**

Exam Board: **WJEC**

Course Director: **Miss Sarah Edwards**

Subject Staff: **Miss Sarah Edwards**
Miss Ffion Byrne

Option: **4**



"I enjoy studying Politics because it allows me to gain a broad range and knowledge of the political systems in both the UK and America. It helps me to grasp and understand current political issues." - **Sophie Williams**

Qualification: **AS / A2 Level**

Exam Board: **WJEC**

Course Director: **Mrs Nicole Trueman**

Subject Staff: **Mrs Nicole Trueman**

Option: **3**

Psychology

Seicoleg

Psychology is an intriguing and complex study of the workings of the human mind and behaviour. Studying Psychology will allow you to gain an understanding of the underpinnings of a wide range of behaviours, such as their biological, social, psychological, cognitive and developmental explanations.

Psychology will be of particular relevance to those who:

- want to find out more about the link between people's behaviour and their environment;
- enjoy exploring topics which reflect current contemporary issues;
- enjoy planning and carrying out investigations to look for patterns in behaviour;
- have achieved success in English Language, Mathematics and Biology at GCSE level.

Topics studied across both AS and A2 level include relationships and happiness, criminal behaviour, schizophrenia, autism, eye-witness testimony, therapies including dream analysis, and phobias.

Progression from studying this subject will lead you to a wide range of courses at University and the transferable skills and knowledge you will gain will give you an excellent grounding for an array of career opportunities.



"I enjoy Psychology as it enables me to explore the workings of the mind and the technicalities of conducting a fair and ethical investigation." – Ayla Hughes

Religious Studies

Astudiaethau Crefyddol

This is an exciting course giving you the opportunity to study some of the fundamental philosophical and ethical questions which people have always asked about life. You will have the opportunity to gain a deeper awareness and understanding of religion and its influence on society.

If you:

- enjoy debate and putting forward well argued cases;
- are interested in what people consider right or wrong, in the way in which they decide how they ought to act or what their duty is;
- want to broaden science or an advanced studies to include a humanities subject.
- have an interest in religion in general or a specific faith, or if you wish to follow an ethical approach to religion;
- want to develop a wide range of transferable skills.

Religious studies develops highly marketable, transferable skills in analysis, evaluation and persuasive writing.

The skills developed in this course are particularly useful for careers in law, education, social work, politics, medicine, administration or the media.

Qualification: **AS / A2 Level**

Exam Board: **WJEC**

Course Director: **Mrs Gemma Doran**

Subject Staff: **Mrs Gemma Doran
Mrs Cheryl Latham
Mrs Lisa Allen
Mrs Emma Whitehurst**

Option: **2**



"I enjoy R.S. because it helps me to have a deeper understanding of the world around me." – Jan Kibitz



Qualification: **AS / A2 Level**

Exam Board: **WJEC**

Course Director: **Mrs Helen Wareing**

Subject Staff: **Mrs Helen Wareing**
Mr Sam Brown
Miss Anna Jones

Option: **2**



There is a well-coordinated and high-profile whole-school approach to developing pupil's knowledge and understanding of Welsh language and culture." - ESTYN

Extra Curricular Activities

Gweithgareddau a Thripiâu All-Gyrsiol

As part of the course students will have the opportunity to use and improve their Welsh by attending a 3 day language course in Glan Llyn, visit the capital city of Cardiff for a weekend stay and also watch a Welsh drama performance in Clwyd Theatr Cymru.

Cymraeg

Welsh

The course will assist you to become a more independent learner in preparation for the world of work or Higher Education. You will be learning to communicate to a very high level in the language and about further aspects of Welsh life and culture.

Speaking / Llafar

By the end of the course, if you work with enthusiasm, you will be able to hold detailed conversations in Welsh. You will also be able to understand others who use the language. You will be expected to use resources like S4C and language apps to help you do this successfully. As part of the course you will study a Welsh film and discuss this in an exam.

Reading / Darllen

You will be expected to read, both independently and in class. You will read articles, stories, poems and a drama which you will be expected to approach critically.

Writing / Ysgrifennu

You will be expected to show that you are able to write in a number of different ways from essays to translations. You will complete coursework on a subject of personal interest.

Why Choose Cymraeg?

Pam Dewis Cymraeg?

If you are interested in the Welsh language, Wales and its culture, then you will enjoy this course. Bilingualism is a key skill in Wales and Europe in the 21st Century. You may benefit particularly from the course if you intend to work in the fields of education, law, health, tourism, journalism or media.

Welsh is a growing requirement in the world of work.

French

Ffrangeeg

Languages are increasingly essential to career success within Europe and the World. British students are no longer only competing against other British students but against European and international students, many of whom have several languages that they speak with a high degree of fluency.

During A Level French you will learn to communicate at a higher level through developing competence in the four language skills of listening, reading, writing and speaking.

You will also broaden your knowledge of the contemporary society and cultural background of France and other French speaking countries.

If you are interested in languages and communication, and you enjoy learning about other cultures and ways of life, then this course could be suitable for you. Similarly, if you are interested in the business world, in travel or tourism or in journalism and the media, then you are likely to find this course appropriate.

Whether you want to use French for work, for further study, training or for leisure, this course will equip you with the necessary skills and knowledge.

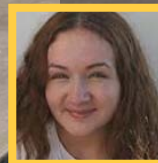
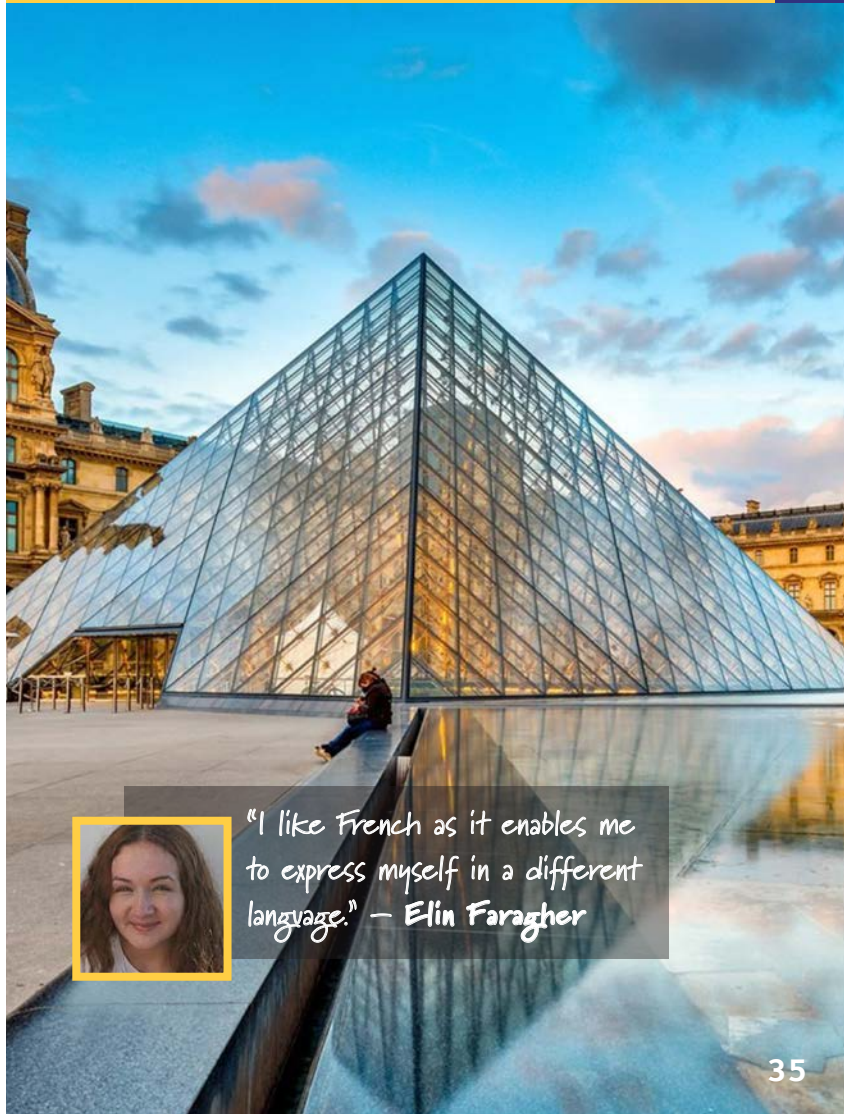
Qualification: **AS / A2 Level**

Exam Board: **WJEC**

Course Director: **Mrs Ciara Brennan**

Subject Staff: **Mrs Jo Bewley**

Option: **2**



"I like French as it enables me to express myself in a different language." – Elin Faragher

Qualification: **AS / A2 Level**
Exam Board: **WJEC**
Course Directors: **Mr Paul Edwards**
Subject Staff: **Miss Anna Jones**
Mr Paul Edwards
Option: **3**

German

Almaeneg

The future hasn't been written yet, but if it had, there can be little doubt that the ability to speak German well would be a significant advantage. Germany is regarded as a true European superpower, and our previous A level candidates all say their language acquisition has served them well as they have gone on to excel in various professions including the following: Hospitality and Tourism, International Travel, International Media, Entertainment, Journalism, Engineering (Airbus and others), Teaching, Armed Forces, Interpreting, Forensic Science, Business, Politics.

Quite apart from the financial and professional reward that German studies can bring, the challenge and enjoyment of engaging with contemporary and cultural content whilst developing confidence and social skills remains an attractive prospect to most. Opting for this course will ensure you reach a high level of fluency and accuracy in the spoken and written language, whilst developing first rate comprehension and problem-solving skills through listening and reading activities.

Students in Year 12 usually have the wonderful opportunity to participate in a trip to Berlin, gain an excellent grounding in the grammar of the language and undertake an in depth study of a popular modern German film. Small group sizes allow us to prepare extremely thoroughly for examinations. At AS level the oral component is worth 12% of the overall A level qualification, while the listening, reading, translation and film essay paper is worth 28%. As we move into the second year, the oral paper is worth a further 18%, the listening, reading and translation paper is worth 30%, and finally the critical response to the set text is worth 12%. The AS level can, of course, be a free-standing qualification, should the candidate so wish.

Although there is no specific course entry requirement, we strongly suggest that candidates should aim to achieve a B grade or above at GCSE.



Spanish

Sbaeneg

The Languages for The Future report puts Spanish as the number one language required by the U.K. over the next 25 years. Languages are increasingly in demand for career success within Europe and beyond. Spanish is a language of worldwide importance, over 500 million people speak Spanish, and it is spoken in many countries around the globe. Learning Spanish will give you a significant advantage in terms of employment opportunities as well as providing challenge and enjoyment throughout the course.

The Spanish A level course will allow you to achieve a high level of fluency in spoken and written Spanish and you will also develop excellent comprehension and problem-solving skills through listening and reading activities. You will broaden your knowledge of the contemporary society and cultural background of Spain and a wide range of other Spanish-speaking countries. Students become truly global citizens through this course where they develop their intercultural understanding and deepen their knowledge of geo-political issues.

Students in Year 12 will have the opportunity to participate in a study trip to Spain, will gain an excellent grounding in the grammar of the language and will undertake an in depth study of a contemporary Spanish film. Our small group sizes mean that students are thoroughly prepared for examinations. The AS course can be a free-standing qualification or it can lead on to further study in the second year when students continue to A level.

Whether you want to use Spanish for work, further study, training or leisure this course will equip you with the skills and knowledge to communicate at an advanced level.

Although there is no specific course entry requirement, we strongly suggest that candidates should aim to achieve a grade B or above at GCSE.

Qualification: **AS / A2 Level**

Exam Board: **WJEC**

Course Director: **Ms Ciara Brennan**

Subject Staff: **Ms Ciara Brennan**

Option: **1**



Qualification: **AS / A2 Level**
Exam Board: **WJEC**
Course Director: **Mr Eryl Evans**
Subject Staff: **Mrs Katherine Moss**
Mrs Lindsey Thompson
Mr David Davies
Option: **3**



"Studying Further Maths means that I am surrounded by others who are just as enthusiastic about problem solving, thinking logically and being creative as I am." - Ioan Morante

Further Mathematics

Mathemateg Bellach

Students who are particularly enthusiastic about Mathematics may take Further Mathematics as well as Mathematics.

The course is designed for students who have a particular flair for and enjoyment of the subject.

Further Mathematics is an essential choice if you wish to study Mathematics at a top university. Many universities also ask for Further Mathematics A Level for Engineering courses.

There are no controlled assessments. In addition to the 4 units for A Level Mathematics, students will be assessed by examination in 5 more Further Mathematics units, including some of the following topics:

Further Pure Mathematics (complex numbers, hyperbolic trigonometry, matrices, polar co-ordinates, series, group theory);

Statistics (looking at how to analyse and interpret data);

Mechanics (modelling real life physical situations mathematically and finding solutions – much of this module is also taught in AS Physics);

Students intending to study Further Mathematics **MUST** take A level Mathematics also and should have a grade A* at GCSE.

Mathematics

Mathemateg

The A Level Mathematics course begins by building on the topics that you have studied at GCSE. It will further develop your ability to solve problems by applying mathematical arguments and logic and extend your range of mathematical skills to solve more difficult, unstructured problems. Whilst studying mathematics you will be expected to construct solutions through the appropriate use of precise, logical, clear statements. Trigonometry and graph skills will be especially useful to you throughout the AS and A2; increasing responsibility for your own learning and the evaluation of your mathematical development.

There are no controlled assessments. Students will be assessed by examination in 4 compulsory units, 2 at AS Level and 2 at A2 Level. The units will cover both Pure and Applied. (Statistical and Mechanical Mathematics)

Prospective students should have a natural talent for and thoroughly enjoy Mathematics. A Level Mathematics is a very demanding course and those embarking on it should be prepared to invest a substantial amount of time and effort outside of lessons. **The minimum grade required to join the course is a grade A at GCSE Mathematics.**

All students joining the course are expected to ensure that they fully understand the contents of the 'Induction Booklet' issued to them. This knowledge is assessed in week three of the course.

Qualification: **AS / A2 Level**

Exam Board: **WJEC**

Course Director: **Mr Eryl Evans**

Subject Staff: **Mr Eryl Evans, Miss Ceri Roberts
Mrs Katherine Moss
Mr David Davies
Mrs Gail Davies
Mrs Lindsey Thompson**

Option: **2**

"The school plans comprehensive and imaginative schemes of work. Innovative projects, such as working with an artist on an architectural project in mathematics, are effective in helping pupils to become creative and ambitious learners." - ESTYN



Qualification: **AS / A2 Level**
Exam Board: **WJEC**
Course Director: **Mrs Holly Reeves**
Subject Staff: **Mrs Carlotta Dunn**
Mr David Swale
Mrs Helena Wade

Option: **4**

Biology

Bywydeg

The course aims to develop a lifelong interest in, and enjoyment of, the study of living organisms, promoting respect for all forms of life. Students will develop both an understanding of biological facts and principles, and an appreciation of their significance in the living world.

The Biology AS course consists of 2 theory units worth 20% each. During the first unit you will be studying basic Biochemistry and Organisation ensuring a smooth transition from GCSE of the overall A2 Biology grade.

The second unit explores biodiversity through physiological adaptation in a number of organisms. During years 12 and 13 you will build on experimental skills in preparation for practical skills assessment of performance in experiments over a period of time.

The A level course includes the AS units and 2 further theory units. AS units are worth 20% each, A2 units 25% each and a further 10% from practical exams. You will look at energy release, microbiology and homeostasis in various organisms. You will be able to understand genetics, evolution and some environmental issues.

Biology A level is an essential subject to take if you are planning to study:

- **Medicine;**
- **Dentistry;**
- **Veterinary Medicine;**
- **Other biomedical courses such as Physiotherapy.**



Chemistry

Cemeg

A Level Chemistry is a course designed to cater for candidates who wish to continue with further studies in Chemistry as well as those requiring a chemical background for study in other subject areas.

The course presents some of the knowledge, concepts, techniques and structural relationships of Chemistry under the broad areas of Organic, Physical and Inorganic Chemistry.

Organic Chemistry involves the study of carbon compounds whilst Physical Chemistry concentrates on areas such as Atomic Structure, Bonding and Energetics. Inorganic Chemistry covers a detailed look at the patterns of reactions. Practical work also forms an important part of the course in order to establish basic experimental techniques.

Chemistry is regarded as a discipline that requires logical thinking and a clear and organised mind. It uses and develops a host of skills which employers regard as being invaluable in the workplace, including problem solving, team working, numeracy, communication and practical skills. It is a subject which is at the heart of a variety of science based careers such as medicine, veterinary sciences, dentistry and pharmacy. Alternatively, an A Level in Chemistry can also be used as a stepping stone to a non-scientific career in fields as diverse as business, law, accounting and management.

Qualification: **AS / A2 Level**

Exam Board: **WJEC**

Course Director: **Mr Jack Evans**

Subject Staff: **Mrs Sarah Llewellyn-Davies**
Mrs Kathryn Jackson
Mr Jack Evans
Dr Amanda Heath

Option: **2**



Medical Science

Gyddoniaeth Meddygol

Qualification: **Level 3 Applied Diploma**

Exam Board: **WJEC**

Course Director: **Mrs Helena Wade**

Subject Staff: **Mrs Helena Wade**
Mr David Swale

Option: **4**

The Diploma in Medical Science is equivalent to one A Level. The course deals with the maintenance of health and the prevention and treatment of diseases. Learners will acquire the knowledge, understanding and skills in key scientific principles to support progress to higher education or employment in areas such as physiological sciences or clinical laboratory services. The qualification covers health, physiology, pharmacology, physiological measurement, clinical testing and medical research.

YEAR 1 (year 12) (Applied CERTIFICATE; equivalent to AS)

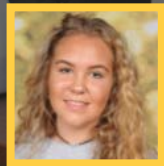
Unit 1: Human Health and Disease (external assessment)	Unit 2: Physiological measurement techniques (internal assessment)	Unit 3: Medical Science research methods (internal assessment)
Students will develop knowledge and understanding of human anatomy and physiology, and of the function of organ systems and some problems that can occur in these systems.	Learners examine physiological measurements that can be made to assess the function of major body systems. The unit relates anatomy and physiology to physiological measurement test results, through an understanding of the principles of the measurement techniques.	This unit develops knowledge and understanding of planning, conducting and reporting of research in medical sciences using a range of methodologies and techniques.

YEAR 2 (year 13)(Applied DIPLOMA)

Unit 4: Medicines and treatment of disease (internal assessment)	Unit 5: Clinical laboratory techniques (external assessment)	Unit 6: Medical Case Study
Students will develop knowledge and understanding of human anatomy and physiology, and of the function of organ systems and some problems that can occur in these systems.	Learners examine physiological measurements that can be made to assess the function of major body systems. The unit relates anatomy and physiology to physiological measurement test results, through an understanding of the principles of the measurement techniques.	This unit provides the opportunity for candidates to demonstrate their understanding of the connections between the other five units of this Medical Science qualification. The content of this unit requires candidates to apply skills, techniques, knowledge, understanding and concepts from across the qualification content in order to complete the required assessment.



"Medical Science enables us to get a detailed, insightful look at how the body works and how we treat it when it's not functioning properly"
– Avril Allen



Physics

Ffiseg

There are many ways of describing the beauty and elegance of physics and the incredible value that it has delivered for society, ever-present in the everyday things around us. Physics helps us unlock the mysteries of our universe and the world we live in, and is one of our most powerful enablers of innovation and discovery.

But physics is also central to everyday life. Physicists are actively collaborating with other researchers and applying their knowledge and technical skills in response to the major challenges of our time, such as sustainable sources of future energy, understanding our changing climate and global food security. Their efforts can be found in everyday technology, such as smartphones and GPS devices, which would not exist today without Physics research.



"I enjoy completing the practical experiments and learning about new theoretical concepts. I am hoping to study Aerospace Engineering at university, A level Physics has helped me develop my skill set to achieve this goal."
— Lauren Snell

Qualification: **AS / A2 Level**

Exam Board: **WJEC**

Course Director: **Mr Jeremy Roberts**

Subject Staff: **Mr Jeremy Roberts**
Mr Neil Eve
Mr Andrew Duffy

Option: **2**



Art & Design

Celf a Dylunio

Qualification: **AS / A2 Level**

Exam Board: **WJEC**

Course Director: **Mrs Stephanie Flaherty**

Subject Staff: **Mrs Katy Jones**
Mrs Stephanie Flaherty

Option: **2**



A Level Art and Design is a subject for students who take real pleasure in a wide range of creative practices.

The course will develop your ability to appreciate the visual world and to respond in a personal and innovative way. It will also develop you as a creative thinker, fostering the ability to research, evaluate, and develop personal ideas to a conclusion.

The skills you will develop will be varied. Among them, you will acquire a working knowledge of traditional materials and techniques as well as working with new media and technology.

You will analyse artists and designers from the past and present and use sources to inspire your own work. You will use skills learned to interpret, convey and synthesise your ideas and feelings through art, craft and design.

Students with AS or A2 Level Art have a wide range of possible career and Higher Education courses to choose from.

Art at advanced level is specifically required for entry into Colleges of Art, Design and Architecture and is regarded as an entrance qualification for a number of College and University courses.



"I enjoy Art & Design because it allows you to explore different mediums of the subject at your own pace. The teachers give you constant support and offer you guidance and feedback to improve your work."

– Ffion Williams

BTEC National Business

BTEC Business Cenedlaethol

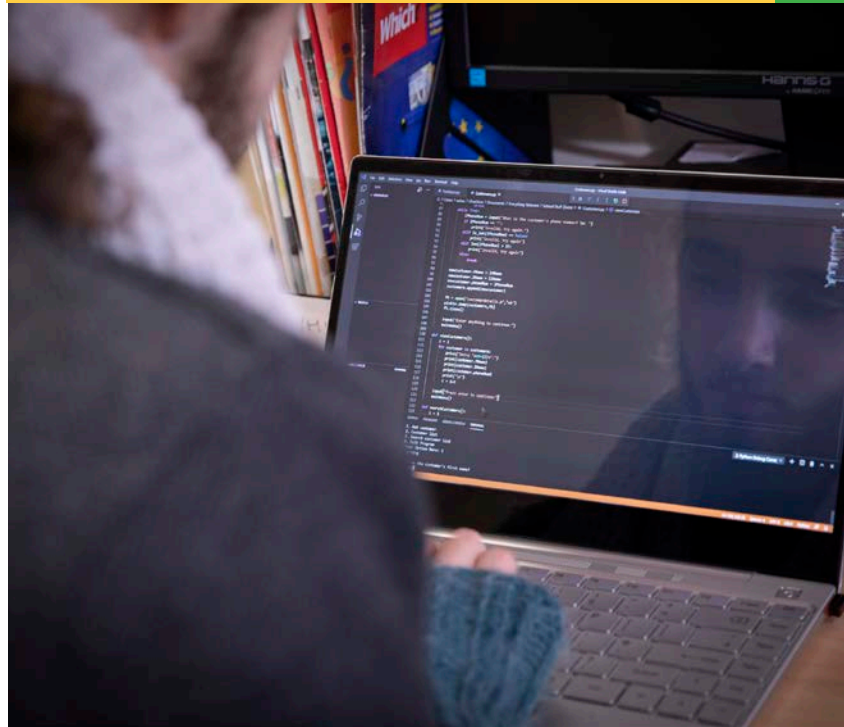
BTEC Business enables students to gain both theoretical understanding of the business world while developing practical 'soft skills' necessary for the real world of work.

In year 1 you will become familiar with the environment in which businesses operate effective use of resources and how to successfully market to different target audiences.

Year 2 gives students the opportunity to develop crucial accountancy skills and the opportunity to gain real work experience through the Work Experience module.

The course is assessment through 40% internal controlled assessments and 60% synoptic external assessments. We work with the Chamber of Commerce in the North West and Wales which gives students the opportunity to network with business sponsors and interaction with real successful business and entrepreneurs.

Qualification: **BTEC National Business**
Exam Board: **ED EXCEL**
Course Director: **Miss Lauren Robinson**
Subject Staff: **Miss Lauren Robinson**
Mr Jordan Rowlands
Option: **4**



"Learning the ways that a business has to be run is very interesting, together with the rules and regulations which they have to conform to and the opportunities it offers for my future." - **Charlotte Fox**



Qualification: **City & Guilds**
Course Director: **Mr Philip Barnes**
Subject Staff: **Mr Philip Barnes**
Mrs Susan Woodall

Option: **3**

Computer Aided Design

Dylunio Gyda Chymorth Cyfrifiadur

This course is designed for students looking to obtain an advanced level qualification in 3D parametric modelling. All qualifications follow the same format with 2 class based assignments and 1 short test; available for all students based upon their prior level of experience, these include:

Level 1 - Contains the following topics, Simple/ Complex 2D Sketches and 3D Modelling Techniques.

Level 2 - Contains all of the above topics as well as part Constraints, Spreadsheets (Parameters) and Engineering Drawings.

Level 3 - Contains all of the above topics as well as Complex 3D Modelling and Sheet Metal Work.

Each of the 3 sections that make up the level grade is equally weighted and must be successfully completed. On successful completion of the course it is hoped that candidates will use their newly acquired skills to pursue a career in any one of the following disciplines:

***Architectural / Interior or Product Design;
Jewellery / Packaging Production; Civil / Industrial
or Aeronautical Engineering to mention but a few.***



Computer Science

Cyfrifiadureg

This qualification encourages students and allows participants to become proficient programmers, developing a broad range of programming skills and knowledge and understanding of computing systems.

Academic Criteria: Computer Science GCSE Grade B or above or Mathematics Grade B or above and previous experience in computer programming in one of the following languages (Python, Visual Basic, Java or C)

During this course students will develop:

- The fundamental principles and concepts of computer science, including logic, algorithms and data representation;
- the ability to analyse problems in computational terms through practical experience;
- the capacity for thinking creatively, innovatively, analytically, logically and critically;
- mathematical skills in binary and boolean algebra;
- understanding legal and cultural opportunities and risks of digital technology.

Qualification: **AS / A2 Level**

Exam Board: **WJEC**

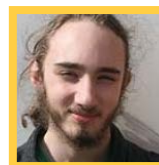
Course Director: **Mr Carl Mitchell**

Subject Staff: **Mr Carl Mitchell**
Mrs Lisa Monaghan

Option: **4**



"The teachers of Computer Science show a keen interest in their students and have good teaching strategies which maintain our interest in the subject." - Sebastian Bishop



Qualification: **Applied Certificate and Diploma in Criminology**

Exam Board: **WJEC**

Course Director: **Mr Emyr Owen**

Subject Staff: **Mr Emyr Owen**

Option: **1**

Applied Certificate and Diploma in Criminology

Criminology will appeal to students who are interested in criminal justice and may be considering careers in related areas. Criminology combines well with a variety of subject areas such as Law, Sociology and Psychology.

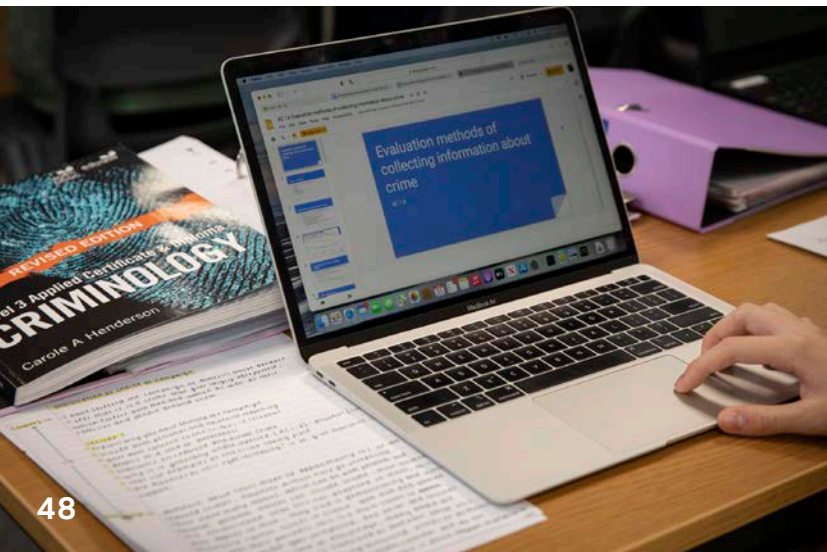
Criminology is the study of the nature, extent, causes, and consequences of crime and criminal behaviour in society. The nature of the criminal justice system, and the experiences of those involved in it – including offenders, victims, police officers and others.

Topics covered are: Changing Awareness of Crime, Criminological Theories, Crime Scene to Courtroom, Crime and Punishment. The course draws on theories, case studies and engagement with professionals.

So if you are interested in:

- Why not all types of crime are alike?
- What different types of crime take place in our society?
- How do we decide what behaviour is criminal?
- What is the difference between criminal behaviour and deviance?
- How do we explain why people commit crime?
- What happens to those who commit a crime?
- Why and how do we punish people?
- What organisations do we have in our society to control criminality?

The Certificate and Diploma will give you all this, and an excellent foundation for degree or vocational qualifications.



Design & Technology

Dylunio a Thechnoleg

As a 3D designer you are at the crossroads of a number of skills. You need creativity, in order to imagine the shape and function of the object, but you'll also need to know about manufacturing process, materials and environmental issues.

Your A Level studies covers these main topics:-

In '**Materials, Components and Application**' - you'll look at materials, production processes and the impact of cost and design.

In '**Learning through Designing and Making**' you'll produce some coursework using your own design with a range of materials and media.

In the second year you'll get to grips with '**Design and Manufacture**' - helping you to appreciate the relationship between design and technology, or form and function. '**Design and Making in Practice**' is the practical, coursework part.

You'll make an object and record the process that you went through.

This course could take you into **architecture, teaching, manufacturing, advertising or engineering.**



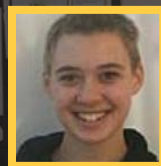
Qualification: **AS / A2 Level**

Exam Board: **WJEC**

Course Director: **Mr Philip Barnes**

Subject Staff: **Mr Philip Barnes
Mrs Elen Ritchie
Miss Paula Jones
Mrs Susan Woodall**

Option: **4**



"D & T gives me the freedom to design and build whatever my heart desires as long as it is within the context. I am able to discuss ideas with teachers who then help and encourage me to do better, sometimes to go out of my comfort zone. We all get to listen and learn from each other and are given lots of creative freedom." - Michaela Sablecki

Qualification: **AS / A2 Level**

Exam Board: **WJEC**

Course Director: **Miss Lauren Robinson**

Subject Staff: **Miss Lauren Robinson**
Mr David Davies

Option: **2**

Economics

Economeg

The course will appeal to students who have an interest in economic affairs and a desire to explore why and how the study of Economics contributes to an understanding of the modern world.

Have you wondered:

- What is the deficit?
- What was the banking crisis?
- What determines the value of the pound when you go abroad?
- Why we still have child poverty in the UK?
- What is the impact of E.U. membership now and in the future?
- Should we join the single currency?
- What are the economic consequences of climate change?
- What can we do to help the environment?
- Why we now have over 2.5 million unemployed?
- Why petrol is so expensive in the UK?
- Why our standard of living is lagging behind many other countries?
- What is the impact of E.U. membership now and in the future?

It will be of particular relevance to those who:

- want to keep their options open as Economics can be combined with a wide range of subjects;
- are interested in current affairs
- enjoy the study of a subject that affects their own everyday lives;
- wish to pursue a career in an Economics-related profession.



WJEC Level 3 Diploma in Food Science and Nutrition

An understanding of food science and nutrition is relevant to many industries and job roles. Care providers and nutritionists in hospitals use this knowledge, as do sports coaches and fitness instructors. Hotels and restaurants, food manufacturers and government agencies also use this understanding to develop menus, food products and policies that support healthy eating initiatives. Many employment opportunities within the field of food science and nutrition are available.

Qualification structure and content

The WJEC Level 3 Diploma in Food Science and Nutrition is made up of four units:

- Meeting the Nutritional Needs of Specific Groups
- Ensuring Food is Safe to Eat
- Experimenting to Solve Food Production problems
- Current issues in Food Science and Nutrition
- Skills to ensure your own dietary health and wellbeing

Learning experience

- Skills required for independent learning and development
- A range of generic and transferable skills
- The ability to solve problems
- The skills of project based research, development and presentation

All units within the WJEC Level 3 Diploma in Food Science and Nutrition are vocationally relevant to the food production industry.

Qualification: **Level 3 Diploma**

Exam Board: **WJEC**

Course Director: **Mrs Maxine Molloy**

Subject Staff: **Mrs Maxine Molloy**

Option: **1**



Progression

Together with relevant Level 3 qualifications such as AS and A Levels learners will gain the required knowledge to progress to higher education degree courses, such as:

Food Science, Food Technology, Hospitality and Catering, Healthcare, Nursing, Health and Social care, Sport Science and Teaching

Year 12 Provisional Programme Of Study September 2022

Name:

Tutor Group:

You should complete and return this sheet to your
GROUP TUTOR or the school by Friday 4th March
2022. for the attention of Mr Kevin Davies or by email
to kevin.davies@castellalun.flintshire.sch.uk

- This Option Pattern is based on guidelines on subject combinations from Careers and Higher Education sources.
- All courses are **AS / A2** and Level 3 courses
- Select the course of your choice. As a guide you should select **ONE** option in **AT LEAST THREE** option lines.
- We may well move subjects to minimise clashes

OPTION 1	OPTION 2	OPTION 3	OPTION 4
CRIMINOLOGY ENGLISH LANGUAGE FOOD SCIENCE MATHEMATICS MUSIC PHYSICAL EDUCATION PRODUCT DESIGN SPANISH	ART & DESIGN DRAMA & THEATRE STUDIES FRENCH GEOGRAPHY HEALTH & SOCIAL CARE PHYSICS RELIGIOUS STUDIES	CHEMISTRY CITY & GUILDS CAD FURTHER MATHEMATICS GERMAN HISTORY PERFORMING ARTS PSYCHOLOGY	COMPUTER SCIENCE BIOLOGY BTEC NATIONAL BUSINESS ECONOMICS ENGLISH LITERATURE POLITICS MEDICAL SCIENCE SPORT BTEC WELSH
Enter your SUBJECT CHOICE here	Enter your SUBJECT CHOICE here	Enter your SUBJECT CHOICE here	Enter your SUBJECT CHOICE here

ALL COURSES ARE SUBJECT TO VIABLE NUMBERS OPTING AND STAFFING RESOURCES AVAILABLE

There will be an additional option line to accommodate extra classes and resolve clashes where possible.

All students will take part in the Welsh Baccalaureate Qualification at Advanced Level.

English and Mathematic resits will be available. There may be some movement of subjects to minimise any clashes

OPTIONS WILL ONLY RUN IF THESE ARE VIABLE NUMBERS.

Application Form

Ffurflen Gais

Name:

Address:

Tutor Group:

Please detach this form and return to Castell Alun
High School by Friday 4th March 2022.

Date of Birth:

Postcode:

Present School:

Email:

Tutor Group:

Tel:

[if Currently attending Castell Alun High School]

INTENDED COURSE OF STUDY AT CASTELL ALUN HIGH SCHOOL

SUBJECT	LEVEL - AS, BTEC etc.	REASON FOR CHOICE

Subject Criteria AS Level

Please find below the subject entry requirements as defined by the Learning Areas in school. We believe that these are the minimum grades required to be successful at AS and A2 level. If you achieve grades close to these you may still be able to study a subject following a successful interview with the appropriate teachers.

SUBJECT	ACADEMIC CRITERIA
Art and Design	GCSE Art and Design, Grade B. GCSE English Language Grade C.
Biology	Biology - GCSE Biology, Grade B or above or GCSE Science Double Award, Grade BB, GCSE English Language and Mathematics, Grade B.
Business (BTEC)	GCSE English Language, Grade B or above. GCSE Mathematics, Grade C or above.
Criminology	5 GCSE Grades, Grade C or above
Chemistry	Chemistry - GCSE Chemistry, Grade B or above or GCSE Science Double Award, Grade BB, GCSE English Language and Mathematics, Grade B.
Drama	Involvement in Drama in and out school preferable. GCSE Drama study preferable but not essential.
Economics	GCSE Mathematics, Grade B or above. GCSE English Language, Grade C or above. GCSE Business Studies would be advantageous.
English Language	GCSE English Language, Grade B or above.
English Literature	GCSE English Literature, Grade B or above. English Language, Grade B or above. Students have to have an interest in reading.
Food Science & Nutrition (Level 3 Diploma)	GCSE Food Preparation and Nutrition or GCSE Food Technology/Hospitality and Catering, Grade C or above. GCSE English Language, Grade C or above.
French	GCSE French at Grade B or above.
Further Mathematics	GCSE Mathematics, Grade A or above.
Geography	GCSE Geography: Grade B or above. GCSE Mathematics, Grade B or above.
German	GCSE German at Grade B or above.
Government & Politics	English Language, Grade C or above and preferably another Humanities subject.
Health & Social Care	English Language, Grade C or above and a Grade C or above in Science is desirable for Double Award students. Prior study of Health and Social Care will be useful but not essential.
History	GCSE History, Grade B or above, though in individual cases previous study of subject is not essential.
Computer Science	GCSE ICT/Computer Science or Cambridge Nationals ICT would be an advantage but not essential. GCSE English Language and Mathematics, Grade C or above.
Mathematics	GCSE Mathematics, Grade A or above.
Medical Science	Science Double Award CC or above
Music	GCSE Music, Grade B or above.
Physical Education	B in the theory paper of GCSE Physical Education. B Grade in a Science GCSE if Physical Education not studied at GCSE. Student needs to participate in at least 1 sport outside school. GCSE English Language, Grade C or above.
Physics	Physics - GCSE Grade B or GCSE Science Double Award, Grade BB.
Product Design	GCSE Product Design, Grade B or above. GCSE English Language, Grade C or above. GCSE Mathematics, Grade C or above.
Psychology	GCSE Biology, Grade C or above and GCSE English Language, Grade C or above.
Religious Studies	Grade C or above at Full Course or Short Course GCSE and GCSE English Language, Grade C or above.
Sport BTEC	GCSE Physical Education, Grade C or above if studied at GCSE. GCSE English Language, Grade C or above. Sport or Physical Education does not have to have been studied previously.
Welsh	GCSE Welsh at Grade B or above.

Application Form

Ffurflen Gais

ADDITIONAL INFORMATION

Including: *Additional learning needs and medical conditions*

I HEREBY APPLY FOR A PLACE AT CASTELL ALUN SIXTH FORM. I AGREE TO ABIDE BY THE CODES OF THE SCHOOL.

Signed:
(Student)

Date:

Signed:
(Parent)

Date:

**FOR
SCHOOL
USE
ONLY**

STUDY PROGRAMME APPROVAL

Signed:

Date:

CASTELL ALUN HIGH SCHOOL | FAGL LANE | HOPE | FLINTSHIRE | LL12 9PY

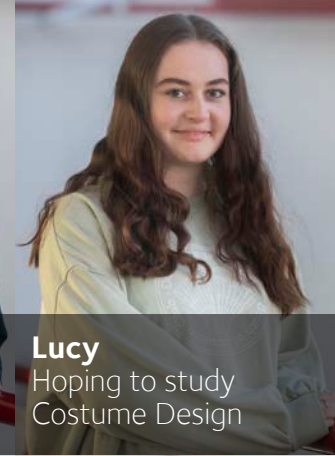
Please detach this form and return to Castell Alun High School by Friday 4th March 2022.



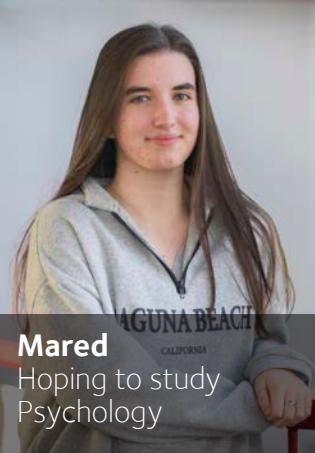
Alumni 2021



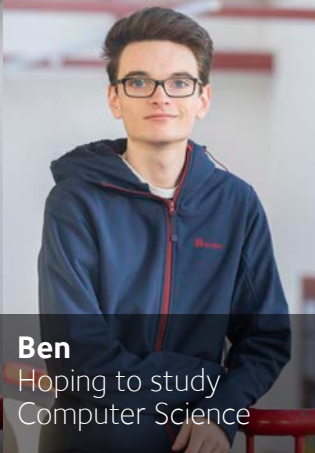
Celyn
Hoping to
study Law



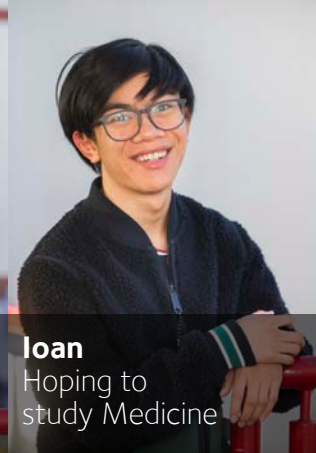
Lucy
Hoping to study
Costume Design



Mared
Hoping to study
Psychology



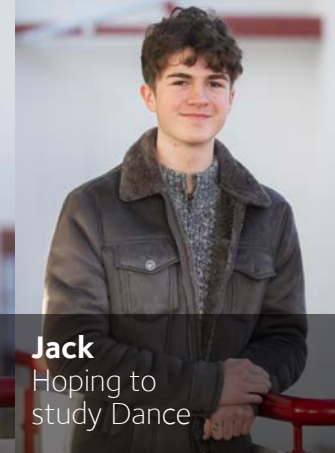
Ben
Hoping to study
Computer Science



Ioan
Hoping to
study Medicine



Sophie
Hoping to
study History



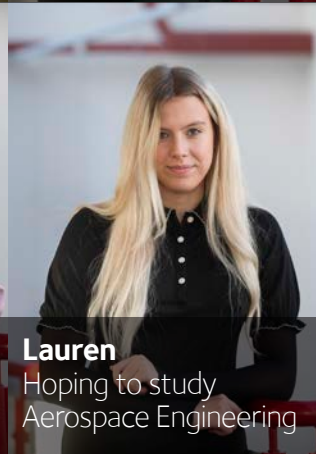
Jack
Hoping to
study Dance



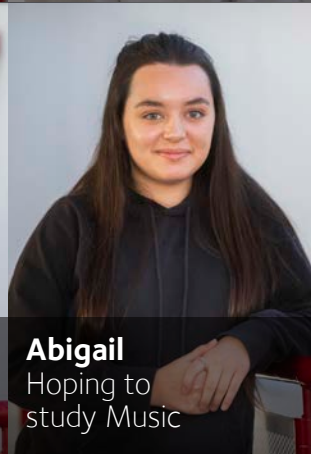
Jessica
Hoping to study
English & History



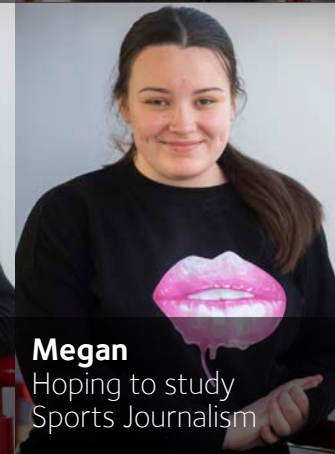
Lilly
Hoping to
study Medicine



Lauren
Hoping to study
Aerospace Engineering



Abigail
Hoping to
study Music



Megan
Hoping to study
Sports Journalism

☎ 01978 760 238

✉ main@castellalun.flintshire.sch.uk

🌐 www.castellalun.com

🐦 @CastellAlun

Castell Alun High School,
Fagl Lane, Hope,
Flintshire LL12 9PY