



# **PROSPECTUS FOR SEPTEMBER 2023**

"A society  
grows great  
when people  
plant trees  
in whose  
shade they know  
shall never sit."  
Athenian Greek proverb

FRIENDLY

ASHCOMBE

Inspiring

Caring

supportive

COMMUNITY

Happy



"creative, enthusiastic, challenging,  
opportunity, friendly, inspiring"  
STUDENT

KIND



# WELCOME TO THE ASHCOMBE SCHOOL

**The Ashcombe School is a genuinely comprehensive school with high academic standards for all, a strong and caring pastoral system, and a wide range of extra-curricular activities aimed at preparing and enabling young people to lead fulfilled lives.**

We are ambitious for all our students and each year are proud to have a strong cohort who go on not only to the most prestigious universities but to a demanding range of opportunities. Our ambition for the school is to provide the challenge and community for success, and is underpinned by the fact that we ensure that every student studies a language, humanities and a creative subject. With a vibrant Careers programme across the school, students have opportunities and inspiration throughout their time with us.

We have an unwavering commitment to inclusion to ensure that every young person who comes into the school is supported and challenged to reach their potential. Everyone

benefits from true inclusion. There is a wide and ever-increasing range of accessible opportunities for all students throughout the school journey which provide multiple experiences to prepare for the world ahead. We are much more than what happens in the classroom and offer young people challenges and the chance to be safely out of their comfort zone through trips nationally and abroad, Duke of Edinburgh, drama, traditional and new sports, and leadership and responsibility opportunities.

All of this is underpinned by a strong sense of community, warmth and a caring ethos which places a high value on wellbeing and nurturing.

Proud as we are of our achievements and excellent results, we always strive to improve and develop. Our staff are dedicated and enthusiastic and benefit from an extensive professional development programme and draw on evidence-informed approaches and excellence locally, nationally and internationally.

I hope this prospectus gives you a positive insight into the life of The Ashcombe School and that you will take the opportunity to visit us and experience it yourselves. We look forward to welcoming you to our community.

**Chris Panting | Head of School  
The Ashcombe School**





“Your vision for an academic curriculum, supported by high-quality teaching and learning, that prepares pupils well for life in 21st Century Britain is shared by all staff at the school”.

OFSTED

### GCSE RESULTS 2022 SAW STUDENTS ACHIEVE:

- 5 GCSE'S grades 9-4 ..... 85%
- English Language grades 9-4 ..... 89%
- Maths grades 9-4 ..... 83%
- Science grades 9-7 ..... 31%
- EBacc grades 9-4 ..... 55%



# CURRICULUM AND ITS DELIVERY

**We provide all students with an inspiring and ambitious curriculum that equips every student with the knowledge and skills to flourish in a broad, stimulating and demanding environment.**

We have a strong reputation for academic excellence and our approach supports all students to achieve their potential. Teaching is delivered at an appropriate pace and level to all ability groups. The Supported Learning Centre works closely with students who may find learning more challenging, devising programmes and strategies that work best for them.

All students are supported by appropriately trained teachers and a dedicated team of teaching assistants. Students with higher academic abilities are challenged and enabled to progress to the top-performing universities, including Oxbridge and Russell Group.

In the first three years, students complete national programmes which provide a broad and balanced variety of subjects. In Year 9 there is a comprehensive advice and information programme for students

and parents to aid the subject choices for GCSE's. In Years 10 and 11 all students will study Maths, English Language and Literature and Science with a combination of a modern foreign language, creative (including Photography and Architecture) and Humanities options. This is central to our vision for a fully balanced curriculum. Year 10 also have vocational choices such as hairdressing and construction. Detailed curriculum information is available in the Subject area of our website.

As a fully comprehensive school, we are delighted that the most recent exam results continue to demonstrate the positive outcomes of our approach, particularly against the background of COVID-related disruption.

The majority of our students progress to our successful 6th Form, which attracts increasing numbers of students from other schools, including

some who would not usually be considered for A-level courses elsewhere. The very positive outcomes for all 6th form students are testimony to the ethos of academic study and learning in the widest sense.





# STRONG RELATIONSHIPS AND COMMUNITY

**At Ashcombe, we are proud of our sense of community and actively promote student emotional health and well-being.**

Parental involvement with the school is an essential contribution to the welfare and achievement of students, and one which begins before arrival in Year 7. We recognise that young people need to be happy and confident to learn effectively and place significant emphasis on ensuring successful transition from primary to secondary school.

We visit Year 6 in local primary schools and offer discovery days and specialist support for students who may find the move daunting. Heads of Year, the wider pastoral team and our mentoring schemes ensure that every student has a familiar face to look to for support.

A regular cycle of Parent Support evenings and meetings with individual teachers sit alongside progress reports tracking academic achievement and effort. Parents have access to ClassChart Information

via our online portal that allows them to keep track of their child's achievements, homework, attendance and behaviour, and ParentPay for electronic payments for trips and activities, food and uniform.

Parental involvement is strengthened by the parent governors who sit on the Governing Body and the very active PTA who raise funds tirelessly with opportunities for supporters of the school to get together.

Students are in mixed ability tutor groups for years 7-11 and setting begins with Maths in Year 7 and English and Science by Year 9.

Every student joins a House which encourages participation in sporting, academic and cultural events across the school, building relationships and underpinning a sense of community.



“Pastoral care is exceptional. Each member of the community is valued and their well-being matters to everyone.”

OFSTED






*“Excellent pastoral care and a huge range of extra-curricular activities on offer”*

PARENT





“The school makes an impressive contribution to students’ personal spiritual, moral, social and cultural development.”

OFSTED





# LEARNING BEYOND THE CLASSROOM

**We will educate beyond the classroom to develop resilient, creative and life-ready citizens with a strong sense of social responsibility, leadership, a sense of adventure and a global perspective.**

We provide many extra-curricular activities across a wide range of interests and subject areas. Some opportunities are competitive while others are a chance to try something new. The programme is designed to provide a diverse range for all interests and ability levels.

From Chamber Music, Warhammer, Sewing, British Sign Language, Musical Theatre, Coding, Latin & Greek, Spanish, Italian to Photography and a list of sports including Futsal, Badminton, Trampolining – every day

before and after school there is a plethora of clubs and activities to keep students engaged and having fun.

Our many sporting teams compete in local competitions and many have competed at regional and national level. Annual events include the Sports Awards evening, Sports and Games Days.

Our Music, Art and Drama departments offer students so many ways to develop their own skills and enrich the cultural life of the school and

the wider community. Art exhibitions as well as choral and theatrical productions feature prominently throughout the year.

Participation in the Duke of Edinburgh's Awards scheme is hugely popular, and the majority of Year 10 students take part at Bronze level, with large numbers subsequently achieving Silver and Gold. Feedback from parents, students and staff is consistently full of praise for the range and number of extra opportunities available to all students.





# PREPARATION FOR LIFE AFTER SCHOOL

**We continually develop our facilities, teaching methodologies and the learning experience of our students to ensure that they are fully engaged and stimulated at school and well prepared for the outside world.**

We set high expectations to allow all students the opportunity to fulfil their potential, whatever the starting point and embrace new educational ideas and thinking to improve Teaching and Learning. Teaching staff continually develop and reflect on concepts and strategies to provide the best basis for students' futures.

School facilities include eleven modern Science laboratories, five Technology workshops, including Computer Aided Design, and IT rooms. Modern Languages provision includes two multimedia rooms. Ranmore Hall is fully equipped for dramatic and musical productions, and the Bradley Arts Centre has outstanding facilities for Art, Drama and Music.

Students can aspire towards many positions of responsibility – from House and Form representatives in Year 7 to Senior Prefects and Head Boy and Girl in Year 13. The School Council is active and productive, informing school decision-making and its members represent the school in the wider community, instilling a sense of ownership and impact.

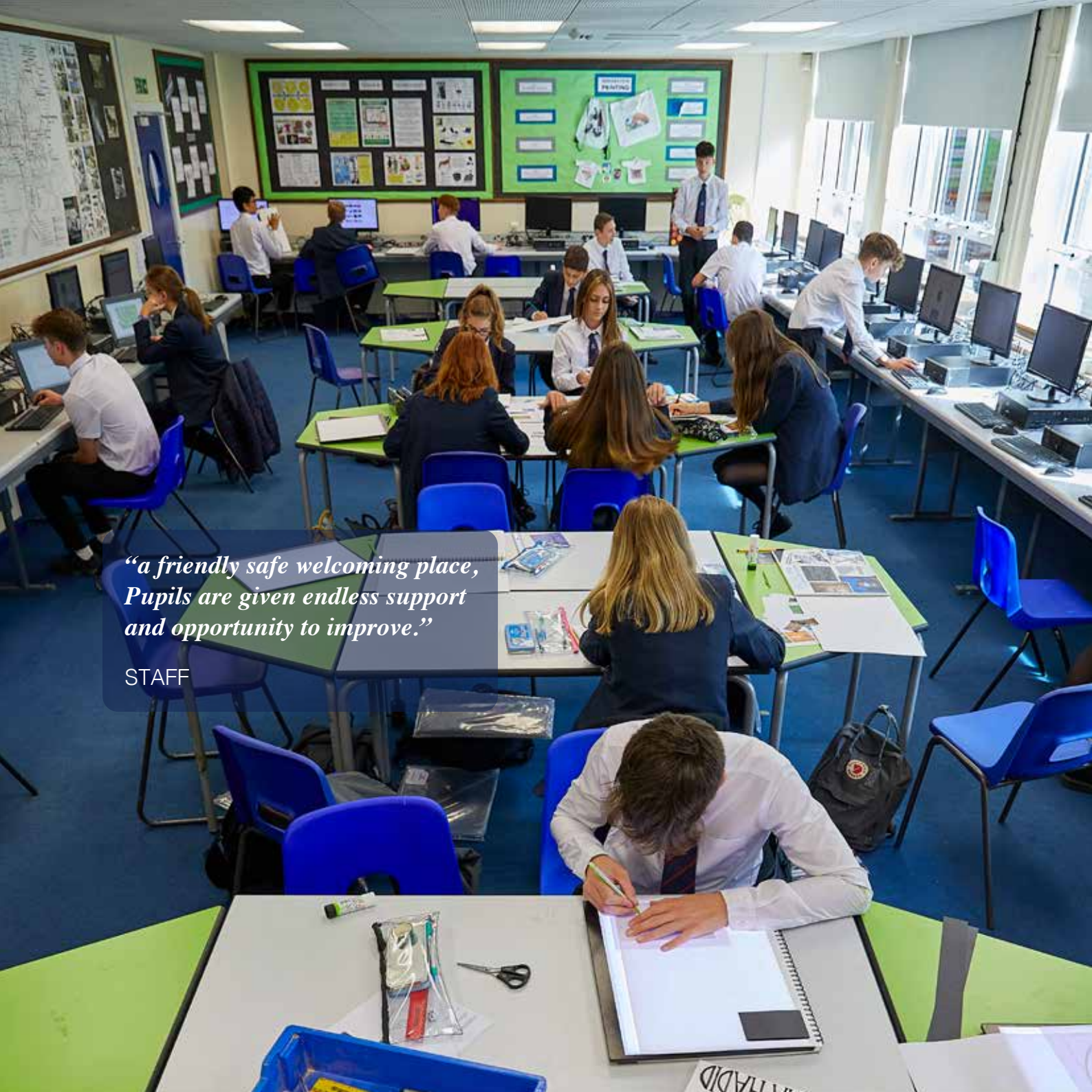
Careers guidance, work experience and links with local business help us prepare students to identify their career objectives with targeted activity in PSE lessons and a Careers Advisor, and Sixth Form students receive

structured careers guidance and advice regarding employment and Further and Higher Education. Work experience will be moving to Year 10 this year and helps to strengthen our strong business links locally which also supports our International Business Week, Careers and Apprenticeship Fairs and Awards evening.

Traditionally Ashcombe students acquire a wide cultural perspective through many opportunities to travel locally, nationally and internationally. We are delighted to be reinvigorating these post-COVID and look forward to visits to France, Germany, Iceland, Uganda, Spain and potentially even more. Ensuring that students stay connected with communities beyond the school is underlined by linking with numerous charities including the Royal Marsden in Sutton, Teenage Cancer Trust and Street Child in Uganda.



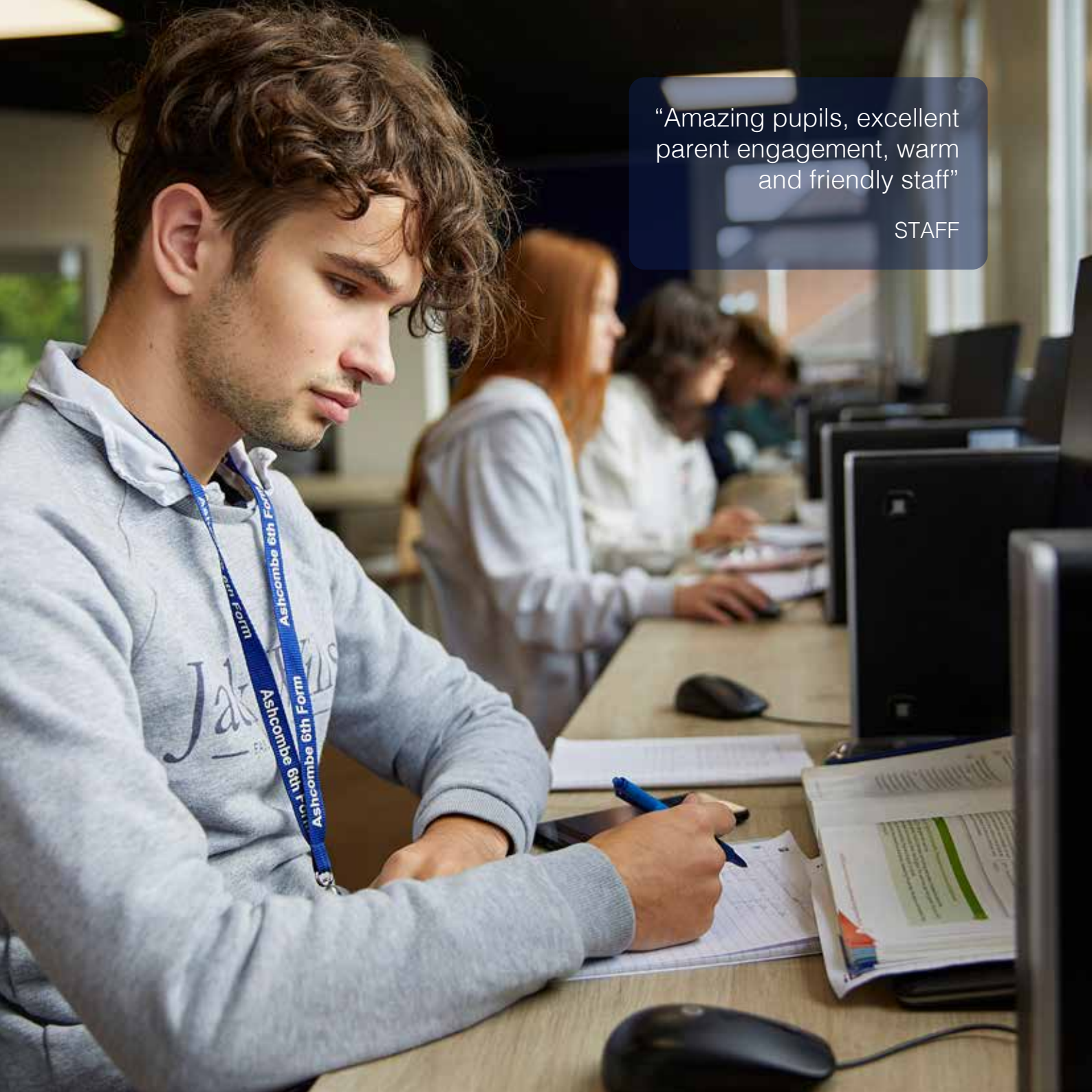




*“a friendly safe welcoming place,  
Pupils are given endless support  
and opportunity to improve.”*

STAFF





“Amazing pupils, excellent  
parent engagement, warm  
and friendly staff”

STAFF





# THE ASHCOMBE **SIXTH FORM**

**A vibrant and intellectually challenging community which models opportunity to the whole school.**

The Ashcombe Sixth Form reinforces the philosophy of the school as a genuinely comprehensive institution and continues our strong and caring pastoral system. The curriculum model at Ashcombe comprises a strong academic focus at its core and several layers of opportunities around this for students to extend themselves beyond pure academic provision. A special feature is maintaining an achievable entry level for many students whose GCSE results may have precluded them from other sixth form entry.

Moving from Upper School into the Sixth Form provides valuable continuity for students who develop a new rapport with staff, whilst the incoming students are very quickly integrated to enjoy high academic standards and the range of extra-curricular and

social opportunities. Our focus on volunteering and leadership adds further dimension to our provision beyond the classroom. Our tutor programme, educates students in important matters of the world and further sharpens their skillsets in order to prepare them for their next steps.

We are proud of all our students who achieve their goal, ranging from those who gain several A and A\* grades, securing places on courses at universities with very high entry requirements, through to those who enter the Sixth Form with minimum requirements and gain 2 grade Es as a passport to Higher Education or Higher Apprenticeships, besides those who use the one year Cambridge Technicals Business course.

“The curriculum in the sixth is broad. Students are also given the opportunity to undertake leadership roles across the school and to access extracurricular activities. The school has a good track record of supporting students to secure places at top universities”

OFSTED



# ADMISSIONS

**A warm and welcoming feel to the school**



## ADMISSIONS

Choosing the right secondary school for your child can be challenging. To help with making the best choice for them, please take advantage of our Open evening, Open mornings, Open Saturdays and conducted tours. There is also a wealth of information available on the website [www.ashcombe.surrey.sch.uk](http://www.ashcombe.surrey.sch.uk) and enquiries about entry in other years and for Sixth Form can be made by emailing [admissions@ashcombe.surrey.sch.uk](mailto:admissions@ashcombe.surrey.sch.uk) or by contacting the school on 01306 886312.

## UNIFORM

The Ashcombe School has a consistent attitude to school uniform and expects all students to look neat and smart, both within the school and whilst away from the site. Pupils must wear a school blazer with a badge, and a school tie. If a jumper is worn, it must be navy blue with a V neck and logo. Uniform requirements include proper footwear (not trainers). For the full uniform list, please go to [www.ashcombe.surrey.sch.uk/Parents/School-Uniform](http://www.ashcombe.surrey.sch.uk/Parents/School-Uniform)

## SAFEGUARDING

The Ashcombe School is committed to Safeguarding and the wellbeing of students. All adults, including volunteers who work with children are DBS checked and we follow Surrey Local Authority Safeguarding procedures and work where necessary with other agencies to ensure students are safe and supported.



**“teamwork, respect, encouragement,  
friendship, fun”**

**STUDENTS**



# SCHOOL INFORMATION



## SCHOOL ADDRESS:

The Ashcombe School  
Ashcombe Road  
Dorking  
Surrey RH4 1LY

[info@ashcombe.surrey.sch.uk](mailto:info@ashcombe.surrey.sch.uk)

01306 886312

[www.ashcombe.surrey.sch.uk](http://www.ashcombe.surrey.sch.uk)

## SESSET:

South East Surrey Schools Education Trust (SESSET) comprises The Ashcombe School in Dorking, Therfield School in Leatherhead and Carrington School in Redhill and was formed in 2017. The unique and individual ethos of each school is strengthened by a collaborative commitment to common values.

[www.sesset.org.uk](http://www.sesset.org.uk)

**SESSET**

*“A society grows great when people plant trees in whose shade they know they shall never sit”*

GREEK PROVERB



Ashcombe Rd, Dorking RH4 1LY  
[www.ashcombe.surrey.sch.uk](http://www.ashcombe.surrey.sch.uk)

