



PROSPECTUS 2023

Information for parents and carers

"EVERYONE EXCELS EVERYDAY"

WELCOME FROM THE HEADTEACHER

Hollingworth is a caring and vibrant school community. We are justly proud of the high quality education we provide and the achievements of our wonderful students. We expect everyone in our school community to strive to excel everyday, to be the very best they can be, and embody our core values of respect, responsibility and resilience.

In September 2013 we were granted Academy status. This has not changed the ethos of the school; we are proud to be a comprehensive school serving our local community, providing an excellent education for all of our students.

However, we are not complacent as there are always ways in which we can improve further and the academy has been the recipient of numerous awards in recent years. In 2016 we were designated as a National Teaching School and National Support School, in recognition of our track record of sustained school improvement and in supporting others.

One of our main priorities is to ensure that every student has the support they need to be happy, flourish and be successful; to that end we were delighted to be only one of a handful of secondary schools nationally to be recognised as an Inclusion Quality Mark Flagship school in 2018. In 2020; we were identified as a 'Thriving School' in a national research project due to consistently retaining and developing the very best staff, whilst consistently maintaining excellent standards.

In 2022, we were awarded the prestigious World Class Schools Quality Mark, this is a student focused award that demonstrates the best education provision for young people in the UK. Hollingworth is the only mainstream secondary school in the Lancashire and Greater Manchester areas to receive this award and now joins a coveted network of just over 120 schools in the UK.

I hope that this prospectus gives you a good introduction to our academy, and provides the information to help you make an informed decision regarding your child's education. We look forward to welcoming you in the near future.



Mr R McGinty
HEADTEACHER

"EVERYONE EXCELS EVERYDAY"



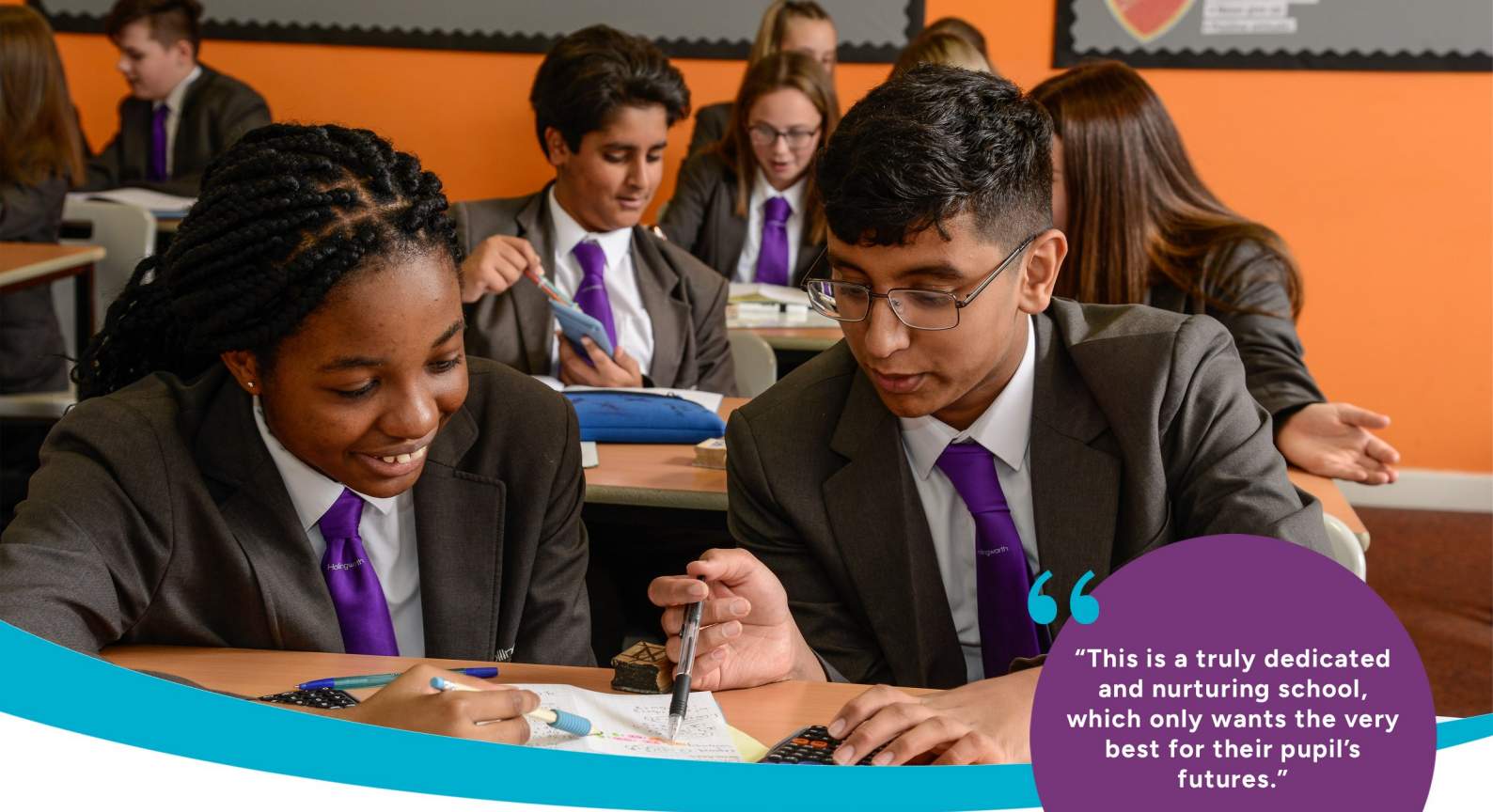
A World Class School is one where parents know their children will reach their full potential, are prepared to excel in higher education or become the brightest employees.

We are hugely proud of this achievement and what it says about our amazing students, their aspirations, their creativity, work ethic, sense of community and pride in their academy. We are delighted that we have been officially recognised as World Class. With this award, parents can be confident that they are sending their children to one of the best schools in the country, where their children will develop skills and experiences beyond the classroom to set them up for a successful life. Having World Class status is not only an incredible achievement for the academy, but a fantastic achievement for the whole community.

As an accredited World Class School, Hollingworth Academy will, amongst other things:

- Be joining an elite closed group of the best non-selective state schools in the country.
- Be able to give all its students, past and present, the right to identify themselves as World Class, and promote this status professionally, once they are 16+.
- Have Hollingworth Academy featured on the list of World Class accredited schools, and have a page dedicated to promoting the school on the World Class School's website.
- Be able to promote its World Class status publicly across the school and local community.

"EVERYONE EXCELS EVERYDAY"



“

“This is a truly dedicated and nurturing school, which only wants the very best for their pupil’s futures.”

*Skills for
Business Awards*

”

Hollingworth Academy has a simple vision;

'Everyone Excels Everyday'.

The vision we have for our academy is that we excel in providing a World Class education where all students make outstanding progress which:

- Fosters proactive engagement with memorable experiences.
- Nurtures them to develop social attitudes and behaviours founded upon the values of respect, responsibility, and resilience.
- Enables them to be thriving, positive and influential members of any inclusive, successful community.



“EVERYONE EXCELS EVERYDAY”



A DISTINCTIVE ETHOS

Our ethos is summarised through our mantra: 'Everyone Excels Everyday'. Put simply, this means that we have an achievement focussed culture where we do not put a ceiling on what our students and staff can accomplish. This philosophy really matters. We understand that academic results opens doors for our young people and provides the opportunities for them to shape their lives. We aim to be consistent in our approach to everything we do, never compromising on our high expectations so that all our students, no matter what their starting point or circumstance, thrive and achieve their absolute best. At Hollingworth, we aim to make success achievable and inevitable.

Our dedicated and enthusiastic staff are committed to providing every young person at Hollingworth with the very best education and start in life. We are driven by our core values: 'Respect', 'Responsibility', and 'Resilience', which are a central part of every pupil's learning experience and the culture of Hollingworth.

We have a very clear and traditional view on standards of behaviour and appearance. Our students must take responsibility for their choices regarding how they dress and how they conduct themselves around the academy and within the community. We believe that high expectations with regard to behaviour and respect, together with clearly defined and applied rules, ensure that all children know where they stand and what is expected of them. We continue to ensure that every student has the right to learn and that every teacher is able to teach in a positive, productive and mutually respectful environment.

Our school uniform is designed to be smart, inclusive and practical; it is one of the ways which helps build a sense of pride in our community.

We are extremely proud of our students and their achievements. Indeed, visitors frequently comment that they are confident, respectful, thoughtful and articulate young people.



INSPIRATIONAL LEARNING AND TEACHING

At Hollingworth, our highly qualified and experienced staff engage students with their passion and enthusiasm for their subjects. Lessons are well planned using the best research and evidence, allowing for a variety of effective approaches and impactful activities ensuring all students value and enjoy their learning.

Hollingworth offers an extensive curriculum for students which includes:

- Tutor groups aimed at developing and fostering positive friendships whilst ensuring that they develop essential literacy and numeracy skills.
- A small nurture group in Year 7, with extra support for transition from primary education.

We want our students to enjoy their time at Hollingworth. Our curriculum is broad and balanced so that students of all abilities can flourish in lots of different subjects. Please see our curriculum booklet for more details of the courses we study.

We also actively develop the skills that our students will need to prosper in life after Hollingworth. Students are explicitly taught how to communicate effectively in the classroom. They are encouraged to sit up; to make eye contact with the speaker; to use appropriate language and to respond in full sentences in all lessons. Students experience a series of enrichment days and events aimed at developing study skills and instilling a passion for learning.

We stretch our high attaining students in a variety of ways. These include mentoring and coaching; special one-off challenges; enrichment events inside and outside of school; university visits that are general and subject specific.



“We want our students to enjoy their time at Hollingworth. Our curriculum is broad and balanced so that pupils of all abilities can flourish in lots of different subjects.”

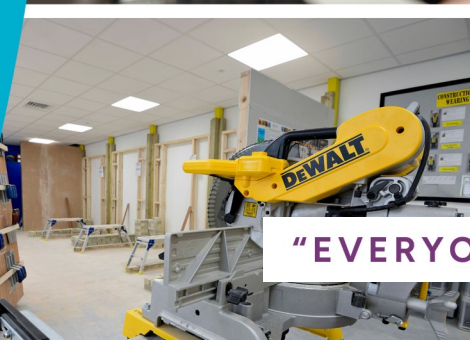
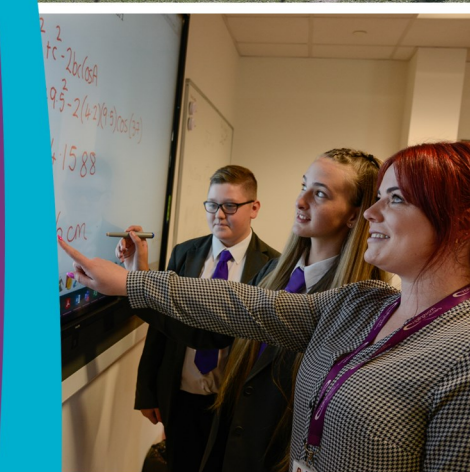
We have built strong links with both Rochdale Sixth Form College and Oldham Sixth Form College, which includes masterclasses at the colleges and opportunities for our students to work with their students. We also work closely with the University of Manchester and St John's College, Cambridge and many of our students have had the chance to take part in activities at both universities. We are equally proud of the success of students for whom learning is more challenging. They are supported with specially designed courses and qualifications, specialised intervention programmes and additional help with literacy and numeracy.

“EVERYONE EXCELS EVERYDAY”

OUTSTANDING FACILITIES

In September 2011 we were delighted to move into our new building, which continues to provide superb facilities to further develop the academic, cultural and sporting interests of our students. The opportunities we are able to offer our children include:

- A spacious and well resourced LRC
- A university-style study area
- Interactive whiteboards and visualisers in every classroom
- Bakery
- Construction room
- Music recording studio
- Performing Arts Theatre
- Dance Studio
- Fitness Suite
- Seven fully resourced computer suites
- Science laboratories
- 3G Astro turf pitches



"EVERYONE EXCELS EVERYDAY"

HEAD AMBASSADORS

MATILDA WYER

My name is Matilda and I am a Head Ambassador here at Hollingworth Academy. I would like to be the person that students feel comfortable talking to. I would like to be the person students can confide in without the fear of judgement. I want to plant the seed that can flourish in our world class academy for years to come.

MANAHIL AHTSHAM

Hello my name is Manahil and I am a Head Ambassador here at Hollingworth Academy. Becoming a Head Ambassador was always one of my goals when I arrived at Hollingworth; as I was shown how important someone can feel if their opinions are valued and heard. In the outside world people face discrimination due to their opinions or beliefs and they can feel like outcasts from communities .

I believe that within the Hollingworth community no matter your race, age, gender and background your opinions should always be valued. Being in secondary school the concept of fitting in is something everyone struggles with, and you can feel out of place a lot of the time; however my main goal as Head Ambassador is to make sure that everyone feels welcomed, valued and heard. Representing such a diverse school has given me the inspiration to really embody our academy's motto of "everyone excels everyday" and look deeper into its meaning. Excelling to me doesn't necessarily mean you are the best, but it means you try your best. I strongly believe everyone tries their best when they feel valued and heard.



"EVERYONE EXCELS EVERYDAY"

OUTSTANDING ACHIEVEMENT

At Hollingworth we expect our students to do their best and 'Excel Everyday'. Teachers are committed to providing the very best lessons and the result is that students are successful in their endeavours. When students start in Year 7, we tell them they will be successful if they attend regularly, read, have a great attitude to learning, work hard and treat other people and themselves with respect. We recognise that each student is an individual and we are determined to help each child find their own talents.

At Key Stage 3, we follow a broad and balanced curriculum that is tailored to meet the needs of all students. We have also introduced a 'Preference Curriculum' in Year 9, which allows students to 'major' in subjects they particularly enjoy. The purpose is to further engage them in their own learning. At Key Stage 4, all students study for qualifications in the core subjects of English, Mathematics, Science, IT and Computing. Students are also able to choose from a wide range of other subjects which best reflect their own talents, interests and aspirations. We ensure that a considerable amount of support, advice and guidance is in place to help our students make choices which best meet their needs.

We have previously been awarded "School of the Year" by Skills for Business, and more recently the 'Inspiring IAG Gold Award' in recognition of our high quality careers information, advice and guidance.

In recent years, we have developed a long term programme for students to progress to both further and higher education. We have excellent relationships with local colleges and some of the top universities in the country. A number of our students have entered the Oxbridge Programme at local sixth form colleges. We value a lifetime of learning, and see Hollingworth as a stepping stone to future success.

We were delighted that the achievements of our pupils have been recognised nationally. In 2015, we were awarded a Pupil Premium Award by the Minister of State for Schools for the excellent academic standards of our children who receive additional support through Pupil Premium. The school is regularly awarded the 'Educational Outcomes Award' in recognition for being in the top 20% of schools nationally for pupil attainment and progress in GCSE examinations.



"Leaders have developed an appropriate and effective personal, social, health, cultural and economic education curriculum. This prepares pupils well for life in modern Britain."

Ofsted



"EVERYONE EXCELS EVERYDAY"

ENRICHMENT

Enrichment is about developing a well-rounded, caring and responsible person, who can contribute fully to the local and wider community. At Hollingworth, we believe in providing a stimulating and creative environment, both in and outside of school. This personalised approach means developing the whole child, focusing on their individual strengths and needs.

We aim to enrich the curriculum with regular educational trips and visits and run over seventy each year. These include all age groups and represent all curriculum areas. Residential trips organised for students at Hollingworth over previous years include: a ski trip to Andorra; a History visit to Ypres; an RE and History trip to Berlin; a PE trip to Tarragona, Spain, with a group of Year 7/8 students, for a football tournament; an MFL trip to Andalucía, and a Science trip to CERN in Switzerland.

As well as excelling in team and individual sports, Hollingworth has an inclusive policy for all students, encouraging participation and individual achievement for all. As well as team training, Hollingworth pupils also participate in the popular after school extracurricular programme, which includes a fitness club, badminton, cricket, trampolining, football, dodgeball, netball and rounders.

Hollingworth looks to develop the creative skills and talents of all students. A series of enrichment days which focus on issues such as human rights, healthy lifestyles and choices, and effective revision techniques are provided for all students. Furthermore, during these sessions we develop the transferrable skills, such as teamwork, personal and social enterprise, which the students will need when they leave Hollingworth. These creative skills are also developed through participation in the many Performing Arts events.



Leaders enhance the curriculum that pupils receive, for example through memorable moments which include a wide range of trips and visiting guest speakers. Pupils value these experiences which bring their learning to life.

Ofsted

Our thriving Performing Arts Department provides the opportunity for pupils to develop their X Factor. Enrichment clubs include: vocal groups; instrumental groups; school band; song writing group; music theory. Students also have access to the recording studio developing both their technical and performing skills. Recent events include:

- Evenings of Music, Voice and Piano.
- The Mighty Zulu Nation.
- Free instrumental sessions – piano, singing, brass, woodwind, violin, guitar and drums.
- Community Music Project – performances at a local care home.
- The British Music Exhibition, Liverpool.

We believe that it is important to reward our students for their excellent behaviour and attitude to learning. Staff regularly organise reward trips in the evening and at the end of the autumn and summer terms. These trips help to foster excellent relationships and build the 'Hollingworth Family'.

"EVERYONE EXCELS EVERYDAY"



Hollingworth Academy



"EVERYONE EXCELS EVERYDAY"

T | 01706 292800 **E** | info@hollingworthacademy.co.uk **W** | www.hollingworthacademy.co.uk
A | Cornfield Street, Milnrow, Rochdale, Lancashire, OL16 3DR

Hollingworth Learning Trust is a charitable company limited by guarantee and registered in England and Wales with company number 8314692