



# Manor High School

Excellence - Inspiration - Resilience - Respect

## APPLICANT INFORMATION PACK



Manor High School, Copse Close, Oadby, Leicestershire, LE2 4FU

0116 271 4941 | [hr@manorhigh.leics.sch.uk](mailto:hr@manorhigh.leics.sch.uk) | [www.manorhigh.leics.sch.uk](http://www.manorhigh.leics.sch.uk)

Follow us on Twitter: @ManorHighSchool | Like us on Facebook: @ManorHighSchoolOadby



# 2018-2019 GCSE Results

0.96

Progress 8

Well Above Average  
(Pupil Level Point Score)

55.2

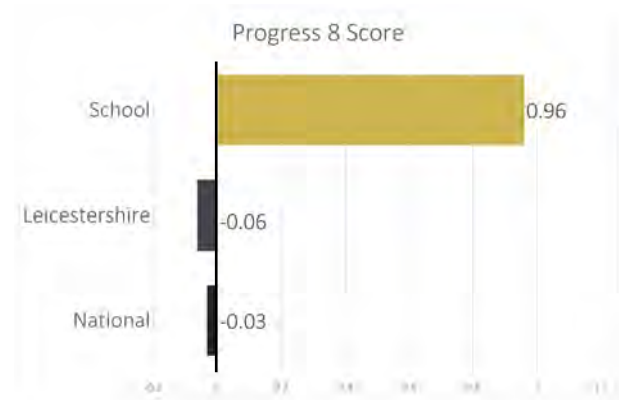
Attainment 8

Attainment 8 Score  
(Pupil Level Point Score)

60.2%

Strong Passes

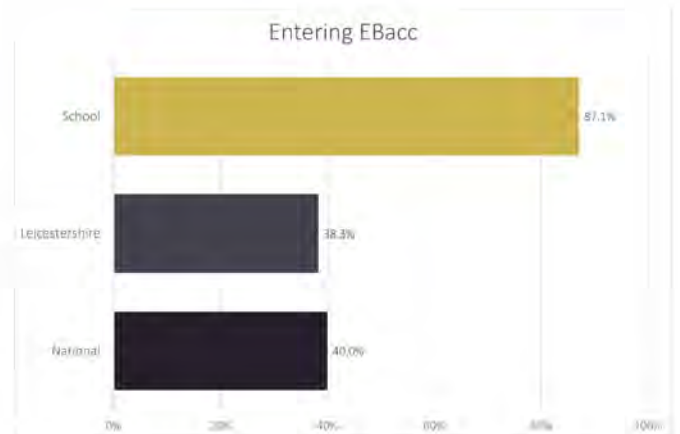
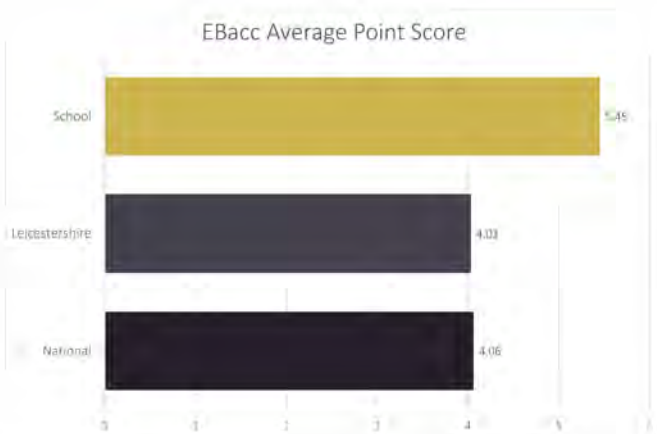
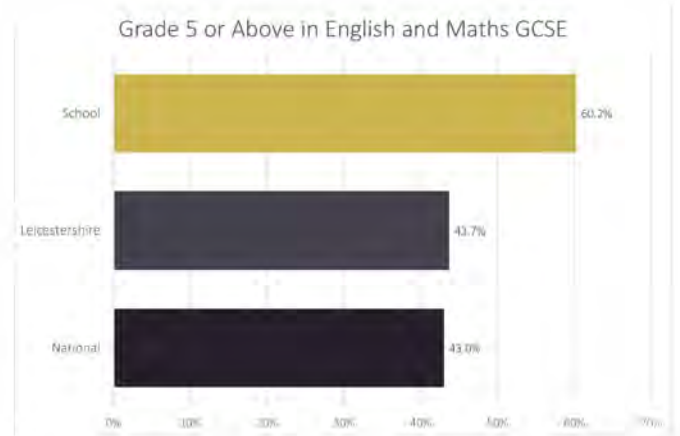
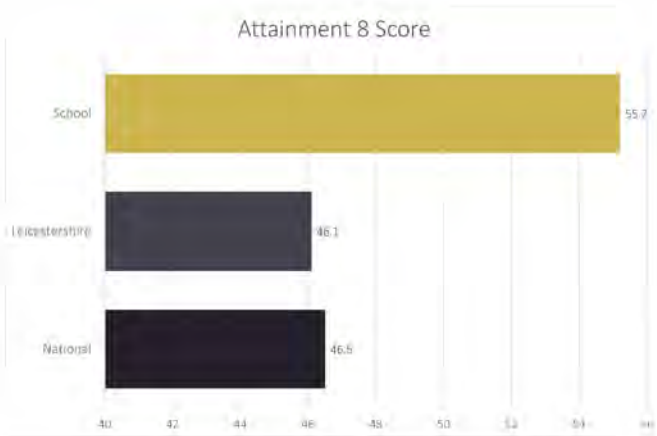
Achieved Grade 5+ in  
English and Maths



In 2019 Manor High School celebrated its 50th anniversary with a superb set of GCSE examinations results.

A fifth of all entries resulted in grades 8 or 9. This is equivalent to or higher than the previous A\* grade. A third of all entries resulted in a grade 7 or higher, which is equivalent to an A or higher under the former GCSE grades. 23% of all students achieved a grade 9 in one or more subjects. In Mathematics, 10% of entries achieved a grade 9. 18% of all History entries resulted in a grade 9. In the Single Sciences, 19% achieved a grade 9 in Biology and also in Chemistry. In Physics, the figure was 24% who achieved a grade 9. Individual successes include a student who achieved eight grade 9s and many others who achieved multiple grade 9s.

Our levels of individual progress are particularly exciting. Many of our students have far exceeded targets, which are pitched against the top 5% of students nationally. Our overall progress 8 score is an outstanding 0.96, making us the top school for progress in Leicestershire and in the top 1% of schools nationally.



# Welcome to Manor High School

---



Dear applicant,

Thank you for your interest in becoming part of our happy and thriving school. I am immensely proud of what our staff and students achieve each year, through their hard-work, dedication and commitment to raising standards.

Manor High is an 11-16 school of approximately 900 students with a culturally diverse population, set in the highly desirable residential area of Oadby and is part of the OAK Multi-Academy Trust. The Trust was formed in April 2018, and currently comprises of Manor High School, Brookside Primary School, Overdale Infant School, Overdale Junior School, and Woodland Grange Primary School. OAK came together as a group of like-minded schools, committed to providing an excellent education for its students. As a trust, we are committed to valuing all individuals from all walks of life. Staff are role models for our students in creating a truly inclusive environment.

Manor High is built upon our four core values: Excellence, Inspiration, Resilience and Respect. These are reflected in everything we do. The school is recognised for and celebrates its distinctive character and ethos.

We are highly ambitious for all of our children who share our love of learning. Our lessons are enjoyable, challenging, fast-paced and fun. We provide a focused and personalised learning environment which enables every individual to thrive and succeed. We know our parents, our children and their community well and they know us. This is part of what makes Manor High stand out and is often referred to as the 'Magic of Manor'.

We are hugely proud of our success at GCSE. We have surpassed even our own high expectations; our GCSE progress score puts us in the top 1% of schools nationally and we are the top school in Leicestershire. We relish the challenge of continuing to raise standards in future years.

Our outstanding results and exceptional standards are built upon high levels of commitment and dedication from all staff. This success comes not through luck or chance, but through detailed planning, embracing the school ethos and vision and hard work. We boast a well-qualified and highly motivated staff who endeavour to give our students the best education possible.

We encourage our staff to organise a variety of enrichment activities and events that run throughout the year to enhance the learning experience. Visit us on Facebook and Twitter, explore our website and read our latest newsletter to find out more. In addition, we advocate staff well-being and team cohesion through internal programmes and a variety of social events.

This application pack provides a flavour of the unique learning community at Manor High. We welcome you to come and experience the Magic of Manor for yourself by visiting the school during a normal day. Please contact [hr@manorhigh.leics.sch.uk](mailto:hr@manorhigh.leics.sch.uk) to make the necessary arrangements.

Yours sincerely,

Liam Powell  
Headteacher

## Our Core Values are

---

---

**E**xcellence At Manor High, we pursue excellence in all areas with uncompromising ambition. We endeavour to make success inevitable.

Our students achieve at the highest levels and make excellent progress from their individual starting points. They compete in county, regional and national competitions and go on to be highly successful in a range of professions, careers and vocations. We have a long track record of GCSE success and we offer a curriculum that will enable all learners to thrive in the next phase of their education.

Our learners are well prepared by our primary schools and our comprehensive transition programme ensures they hit the ground running when they commence Key Stage 3. As much as we have high expectations for our students, they have equally high expectations of their teachers. Lessons are expected to stretch and challenge each individual. At the end of their five-year journey at Manor High they achieve GCSE results far beyond national levels. Their destinations include all of the top universities. Our extensive post-16 support and advice, plus strong educational partnerships with other providers, underpin this success.

**I**nspiration An exciting range of subjects for every interest and ability is on offer, while options are kept open to specialise at the next stage of education. We challenge our students and push them to the highest standards.

We strive for outstanding teaching and learning and this is supported by the inspirational additional activities we offer. These include educational visits both at home and abroad, a variety of after school clubs including sports, drama, music, languages, science and astronomy. These are well attended and popular with the students. We offer both Bronze and Silver Duke of Edinburgh's Awards and are proud of our students' strong commitment to this respected programme.

Our purpose is to encourage and support our well-motivated students through high expectations, inspired teaching and varied extra-curricular enrichment.

**R**esilience We secure our students' success during their time at Manor High and in their future lives, by giving them the skills and strategies to cope when things get tough and succeed in the face of adversity.

Our tutorial programme empowers students to develop and accredits their attitudes, attributes and skills essential for employability and life. We will ensure that each child leaves Manor High School with the best qualifications possible and personal characteristics which allow them to stand out from the crowd and achieve their goals.

Learners are given many opportunities to contribute to the leadership of our school and are very much part of the decision-making process. Our student leaders have brought about many positive changes within the school and are an integral part of our recruitment process.

Vertical tutoring ensures our students are supportive of each other. Younger learners benefit from the guidance of the older students, while our older students gain confidence from assisting their younger peers.

**R**espect We are very proud of our diverse and harmonious community. Our students come from the UK and far beyond. We all gain from the cultural richness of our community and environment. This is a strength which we respect and celebrate.

We listen to our students, our parents and our community. We encourage dialogue and act upon the feedback we receive.

Our programme of assemblies is built around moral principles and aspiration. They are structured to drive our core values of Excellence, Inspiration, Resilience and Respect. Our ethos is reflected in all that we do.

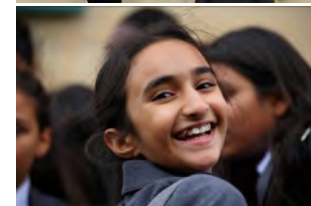
Students at Manor High love their school. They come to school prepared to learn and they wear their uniform with a strong sense of pride and belonging. We have a high-standard of conduct, with pupils behaving well in lessons and around the school. Students identify with their own House and enjoy a healthy level of competition. There is respect for each House while each strives to be the best.



# What Ofsted says about us

---

- Leaders and governors have established a highly aspirational 11 to 16 school with a distinctive character and ethos.
- Leaders are committed to providing a first-class standard of education for pupils. Pupils' progress is good and continues to improve.
- The school is highly inclusive. Pupils from a wide range of backgrounds come together as a single community. They know and uphold the school's core values.
- Staff work effectively to promote pupils' welfare. The school's tutoring arrangements mean that pupils of different ages socialise and work together. Younger children find this very reassuring.
- School leaders have created a highly ambitious culture. They expect pupils to make progress which is similar to the top 5% of pupils nationally. Many pupils are on target to attain well because they aspire to these high expectations.
- Leaders have a keen sense of moral purpose. The school's core values are deeply embedded in everyday school life. Many staff strive to motivate pupils so that they aim for excellence.
- A high number of parents and carers highlighted the impact of the headteacher on developing the school and raising standards. Parents commented, too, on the respectful way the headteacher works with pupils to encourage them and develop their potential. This was clear during the inspection, when the headteacher welcomed each pupil individually by shaking their hand as they entered assembly.
- School staff offer an exemplary range of extra-curricular activities for pupils. Pupils from all backgrounds get involved in these opportunities. The quality of these activities is high, so pupils want to stay involved.
- Leaders make sure that teachers are highly motivated. Senior leaders have considered the needs of staff carefully. Staff support the work of leaders to improve the school. Inspectors' conversations with staff, and Ofsted's online questionnaire, confirm that staff morale is high.
- The arrangements for keeping pupils safe are effective. School leaders have created a culture where the safety of pupils is paramount.
- Teachers' planning for pupils with SEND is effective. Teaching assistants are well trained and support pupils well.
- Pupils are proud of their school. They are happy and self-confident. Many pupils contribute well to lessons. Older pupils, in particular, are good at supporting each other's learning.
- The house system promotes healthy competition and develops pupils' resilience. Pupils value the school's mixed-aged tutor groups. Younger pupils benefit from the feeling of security that the arrangements provide.
- Pupils come to school prepared to learn. They dress smartly and take the right equipment to lessons. Pupils from Year 9 onwards have consistently positive attitudes to learning, which helps them to make good progress.
- Pupils attend school and lessons punctually. The school has high expectations of pupils' attendance. Leaders reward pupils for good behaviour and attendance, and this encourages them to do their best.
- Leaders have created a positive climate for learning. The school is a calm place. Pupils' movement around school is orderly. They are courteous, friendly and welcoming to visitors. A high staff presence around the school contributes well to good order.
- The school has a clear behaviour policy that sets high standards for pupils' conduct. This policy has a positive impact on pupils' behaviour.
- A demanding, well-taught curriculum helps pupils of different abilities to make strong progress and attain well.



# What our staff and students say about us

---

## Our students

“Manor High is an excellent learning environment where you are encouraged to do your best.” Year 9 Student

“The lessons are fun and challenging. The teachers encourage us and they encourage us to work with older students.” Year 7 Student

“Manor High has good expectations which make me push myself.” Year 7 Student

“I feel happy and supported by the teachers, they get to know you as a person and respect us for who we are.” Year 7 Student

“I enjoy the fact that you get to meet new people from all over the world. It’s an enjoyable experience to learn new things from different religions and from people’s backgrounds.” Year 9 Student

“I value the work that everyone does to make the school a safe and fun environment for learning.” Year 9 Student

## Our staff

“Very proud to be part of a driven team.”

“Could not wish for a stronger department, which all know where we are heading and how we are going to get there. “

“Strong line management from the SLT link who recognises my strengths. They fully support my professional development and work outside of school. In addition supports the development of my team.”

“I am happy working at Manor High School and feel appreciated for my contribution.”

## Our parents

“I really like the way my child is showing progress, we made the best decision to move him to the Manor and I am very grateful for the teamwork and dedication from the teachers. I also believe it is a partnership and collaboration between school and parents,”

“I like the energy and enthusiasm of the head teacher; the good and enthusiastic teaching; wide ranging extra curricular activities and charity fundraising projects which promote an interest in others and an understanding of the world outside the classroom.”

“The teachers challenge my daughter and support her when she has a problem. Teachers know their pupils, their strengths and weaknesses.”



# Expectations

---

**W**e have high expectations of ourselves and our students. Our intention is that our curriculum inspires students to become confident, independent and inquisitive learners, prepared to take risks.

Through our exceptional teaching and learning, we develop:

- Active learners
- The whole child
- Resilience

Our curriculum is best understood as an upward, sequenced spiral of learning knowledge and skills are developed, revisited, consolidated and built upon in a sequenced continuum.

Challenge is built in with a scaffold to the top of every child's potential. We know our learners well and therefore, we recognise that our pupils are happiest when they are challenged.

Whilst we encourage reflective learners, we know that they love pace in lessons in which they are pushed and stretched. This is how we have become a top 1% performing school nationally for progress.

We offer:

- A welcoming, friendly, supportive staff who value contributions and embrace improvement
- A commitment to equality, diversity and inclusion at all levels
- Well-motivated pupils and supportive, aspirational parents
- Opportunities to grow and develop your career and experiences

Our staff are supported through:

- Enhanced CPD opportunities and a strong commitment to professional development
- Collaboration across schools;
- Enthusiastic teams of staff, committed to continually raising standards;
- A thriving and successful Multi-Academy Trust.





# Manor High School

Excellence - Inspiration - Resilience - Respect

**Manor High School, Copse Close, Oadby, Leicestershire, LE2 4FU**

0116 271 4941 | [hr@manorhigh.leics.sch.uk](mailto:hr@manorhigh.leics.sch.uk) | [www.manorhigh.leics.sch.uk](http://www.manorhigh.leics.sch.uk)

Follow us on Twitter: [@ManorHighSchool](https://twitter.com/ManorHighSchool) | Like us on Facebook: [@ManorHighSchoolOadby](https://www.facebook.com/ManorHighSchoolOadby)

