





HEADTEACHER'S WELCOME



Welcome to Walthamstow School for Girls!

As you read through our prospectus, you will see what a special school we are: characterised by high expectations, a commitment to developing lifelong learners and a strong sense of 'family' and community.

It is a privilege to lead staff and students in this exceptional school where our mission is to ensure that students are prepared to lead happy and fulfilling lives and are empowered to become the female leaders of the future. Our school motto 'Neglect not the gift that is in thee' expresses our desire to nurture the individual talents of every child. We achieve this through inspirational teaching and learning, exciting extra-curricular opportunities and strong partnerships with parents and carers.



WHAT DO WE STAND FOR?

"WSFG offers a lovely environment, a great ethos and terrific teaching!" PARENT

We are a truly comprehensive school, proud of our diversity and committed to social justice. In 2018, Ofsted told us that we are an Outstanding School; we achieve exceptional outcomes and have consistently been in the top 10% of schools nationally for progress. Our results in 2022 saw us achieve our 'best ever' results across a range of measures, including progress and attainment.

We want your daughters to develop the confidence to flourish in every area of their lives, including in their academic achievement. It is more important than ever that girls' voices are heard so that they feel valued, understood and supported by the adults around them. Our work on student leadership is aimed at developing their skills, knowledge and confidence so that they can shape their world and become the leaders of tomorrow. When you meet our girls, you will see how confident and articulate they are.

At WSFG, we aim to create responsible citizens and critical thinkers. Through the curriculum itself, as well as a range of extra-curricular activities and educational visits, students are able to develop their sense of community and global responsibility. This is enhanced by visits from speakers and role models, including our alumni, who run workshops and provide a different perspective on life beyond school, including college, university, links with business and industry, research, the arts and media.

Every one of our 900 students is valued equally as an individual with different gifts and talents, reflecting our commitment to the school motto "Neglect not the gift that is in thee". We offer robust pastoral support and regular monitoring, target setting and dialogue with students, parents and carers. We ensure that students settle in well to the school through strong links with local primaries, a transition day, Summer School and activities such as 'This is our School' where new year 7 students show parents around the building at the end of their first month with us.





WHAT CAN YOU EXPECT?

"I don't think I'll ever be able to express my gratitude to this school and the teachers for everything they've done and the constant support they've given. And if there is one thing the school has taught me, it's this: if you believe in yourself, you can accomplish any dream you set your mind to." STUDENT

At WSFG, we pride ourselves on our strong sense of community and 'family', the commitment of staff, parents and governors to the welfare and progress of students and the school's inclusive and diverse nature. We have a very stable staff who are experienced and highly-skilled subject specialists. Our students are a delight: ambitious and hard-working, they embrace the full range of opportunities offered to them both during and beyond the school day. This is highlighted not only by our exceptional examination results but also by the maturity of the girls, their sense of responsibility, community and fun.

We offer excellent facilities for our students which I am always reminded of when I see the sense of awe in the faces of new students, parents and visitors who comment on the beautiful school grounds and are surprised to find them in an East London comprehensive school! Our acclaimed architect-designed buildings and facilities make a stunning learning and working environment. Our £18 million rebuild project, completed in 2010, dramatically extended and enhanced our accommodation, allowing us to benefit from both a listed building and an architect designed site, surrounded by lawns and trees. We also have a Greek Amphitheatre and an allotment where students learn how to grow fruit and vegetables, some of which are then used by our chef.

In February 2021, we were designated as the lead school for the North East London Teaching School Hub. We are one of only 87 schools chosen by the Department for Education to co-ordinate training and development across 239 schools in Haringey, Redbridge and Waltham Forest and the only local authority secondary school in the country to receive this honour. This will enable the school to continue to develop as part of an extended network, to benefit from the latest research and to attract the best teachers.

There is no substitute, of course, for seeing the school for yourself. I would be delighted to show you around our lovely school and talk to you in more detail about how we can 'bring out the gift' in your daughter.



LIFELONG LEARNING

'This is a place that proves that with the right teaching and school culture, anyone can thrive. The strong academic atmosphere, which is backed up by a great pastoral system, means there's no reason why any girl should get left behind.'

THE GOOD SCHOOLS GUIDE 2022

Teaching and learning

As you walk around the school, you will see that there is a calm and productive atmosphere as students engage with the challenges of learning. We encourage the girls to take risks, to consider a range of ideas and to learn through dialogue and co-operation. Inspirational lessons, led by experienced and well-qualified staff, encourage students to be curious and creative.

Our staff benefit from a range of professional learning opportunities which ensures that their subject knowledge is up-to-date and that they are equipped to meet the needs of our students. This includes opportunities to work in collaborative groups to explore how to further improve their teaching and to learn about the most up-to-date ideas in teaching. Because we are the lead school in the North East London Teaching School Hub, our staff benefit from extensive teaching networks and the latest educational research.

Our Curriculum: KS3

We have developed an ambitious and innovative curriculum, designed to support each student to achieve their very best. By offering a broad and balanced range of subjects which can be adapted to the needs of each student, we are able to create a personalised pathway for your daughter. We ensure that key areas of skills and knowledge are revisited throughout their five years with us in order to embed learning. Many parents value our commitment to the arts subjects and the rich experiences which their daughters gain as a result.

In years 7 to 9, we aim to ignite students' passion for learning by studying specialist subjects in depth. All girls study English, math's and science, which are core subjects, as well as history, geography, RE, PE, drama, art, design and technology, computing and PSHE. They will study one language, either French or Spanish. Students also benefit from other opportunities, such as Latin in year 7 and learning Dual Languages (both French and Spanish) from year 8 onwards. We encourage a love of reading through tutor time and our literacy curriculum in year 7.



ACADEMIC SUCCESS FOR ALL

'Thank you so much for all your hard work in teaching, inspiring and supporting our daughter who has taken advantage of all the creative opportunities. We're so proud of her achievements.' PARENT

Our Curriculum: KS4

Our Key stage 4 curriculum provides students with the opportunity to specialise and follow a curriculum which is most suited to their needs and interests. In years 10 and 11, all students study English Language, English Literature, Math's , Combined or Triple Science, PE, RE and PSHE.

In addition to the core curriculum, students choose four more subjects. The following subjects are currently offered: Drama, Music, PE, French, Spanish, Fine Art, Art Textiles, Film Studies, Economics, Design Technology, Food Preparation and Nutrition, Religious Studies, Geography, History, Business Studies, iMedia, ASDAN (Personal and Social Effectiveness) Computer Science and Latin. More details can be found on our website.

Supporting you Child

We believe that happy students will be successful ones. Your child will be part of a tutor group, overseen by the student pastoral leader (SPL) for their year group. The tutor knows each student, meeting with the tutor group every day in order to support students with their development and wellbeing, as well as their academic progress, and liaising with parents.

The school provides students with a range of opportunities to broaden their horizons. Whether students are benefiting from our Target Oxbridge programme, work with the National Theatre and Old Vic, MyBnk economic awareness or Duke of Edinburgh or overseas educational visits, we aim to ensure that individual gifts and talents are nurtured through a wealth of activities.

We pride ourselves in offering a wide variety of extracurricular clubs, including drama, science and technology, ceramics, debating, global book group, a variety of sports clubs and fixtures, Glee Club, our school musical and our nationally-renowned steel pans.





EXAMINATION RESULTS

'There's a safe and energising spirit within our school. STUDENT

The school achieves results which are consistently well above the national average at Key stage 4 and we are recognised for the excellent progress made by students in the five years they are with us.

The academic year began with some excellent examination results, many of which were our 'best ever' and which are a testimony to the diligence of students, support from parents and commitment from our staff.

Some key results included:

- 67% of our students achieved a grade 5 (a 'strong' pass) and above in English and math's
- 81% of our students achieved a grade 4 (a 'basic' pass) and above in English and math's
- Our attainment 8 score (how well students achieved across their best 8 subjects) was 58.71%
- 42% of students achieved grades 7-9 (7 is the old 'A' grade)

There were also some very impressive results in individual subject areas at the 7 and above range, which is the equivalent of an A and above previously. For example, 73% of students in music achieve grades 7 and above; 59% of students in drama; 55% in English Literature; 92% in biology, 82% in chemistry and 65% in physics (triple scientists); 59% in French; 62% in Spanish.

Along with all schools nationally, we are awaiting confirmation of the school's progress figure which is an important measure because it shows how much progress students make from their original starting points at KS3. This is important to us as we want to ensure that students really thrive with us and that we 'bring out the gift' in each one.

To read more about individual student successes, please visit our website

<https://www.wsfq.waltham.sch.uk/performance>

RESPONDING TO STUDENT NEEDS

'Inclusive care for individuals lies at the heart of the school's ethos and culture.' OFSTED

Additional Needs and Personalised Learning

We have recently opened our Wellbeing Hub, staffed by qualified practitioners, who can provide social and emotional support for students when required, in addition to our both internal and externally-provided counsellors and two learning mentors.

The Language and Learning Development Faculty works with parents and students to ensure that those with Special Educational Needs can develop the skills and knowledge they need to make the best possible progress. Through close liaison with primary schools, small group meetings and workshops with parents and students in the Summer term, and the opportunity to attend our Summer School, we ensure that families of SEND students feel prepared and confident for entry into year 7.

Students who are in the early stages of learning English receive support from specialist teachers. There are booster classes and 1-1 tuition to assist with basic skills in core subjects. Students with additional needs also have the opportunity to receive further support, both within and outside of class and may benefit from a flexible curriculum, including the ASDAN Personal and Social Effectiveness qualification at KS4. The progress of all students is monitored carefully through our Go4Schools software package. A wide range of in-class and extra-curricular activities are provided to extend and challenge all students, including the most able.





AN INSPIRING PLACE TO LEARN

'There's always new and exciting opportunities just around the corner here at WSFG.' STUDENT

The buildings and facilities make a stunning learning environment for our students. The £18 million rebuild project, completed in 2010, dramatically extended and enhanced our accommodation. We have state-of-the-art facilities in Science, Technology and Performing Arts, as well as a fantastic dining hall, two assembly halls and social areas. Facilities include:

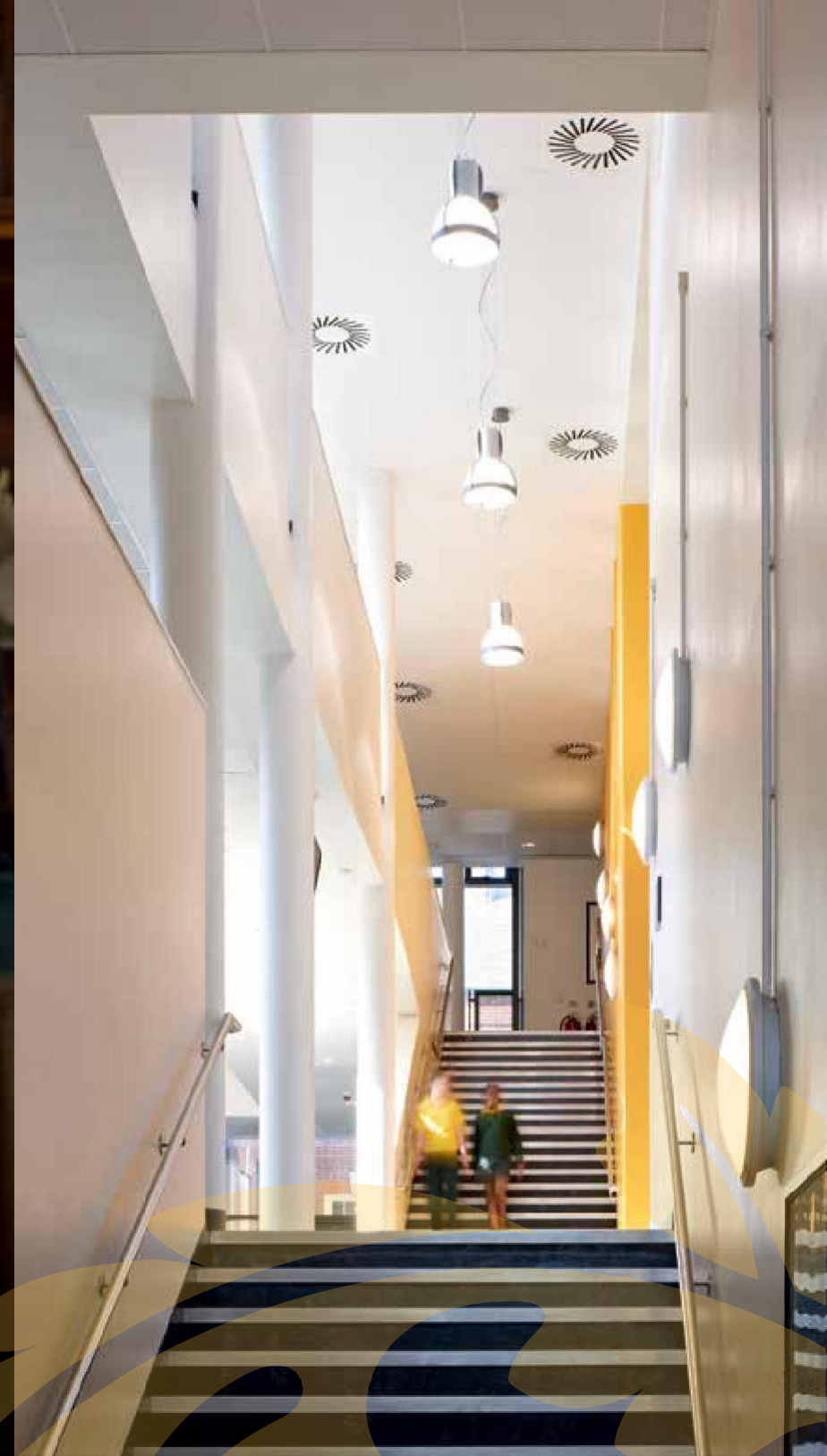
- Eight science laboratories
- Purpose-built sports hall and multi-use games area
- Top of the range lecture theatre
- Two Drama studios
- Two specialist Music classrooms, two recital and four practice rooms
- spacious library and Learning Resources Centre
- Redesigned Technology workshops
- Five top-of-the-range ICT suites
- specialist Food Technology, Textiles and Art rooms
- High specification networked PCs and laptops

Situated in beautiful landscaped grounds, the school's outside space encourages play and creativity as well as quiet reflection and study. Unusually for a London school, Walthamstow School for Girls is surrounded by mature trees and lawns. The paths wind around pretty garden borders, creating a series of intimate and varied spaces, from the pond area to the raised terrace, from the play areas to the Greek Theatre. The girls really make the most of their lovely surroundings, come rain or shine!



NEGLECT NOT THE GIFT THAT

'Few schools in similar contexts do as well as this school to prepare students so well for life.' OFSTED





DEVELOPING SUCCESSFUL YOUNG WOMEN

“We have been so impressed and truly grateful for the level of care and nurturing that our daughter has received whilst at WSFG. Her experiences have been wide and varied and she definitely put her heart into all she did whilst at the school. We are incredibly proud of her efforts, and her GCSE results are testimony to this.” PARENT

Our role is to educate tomorrow's women to be confident, articulate and able to discuss and debate intelligently. Through a range of activities and opportunities, girls develop their leadership qualities, their sense of community and responsibility as global citizens

Every girl in the school has the chance to participate actively in school life. Our students present assemblies, perform at school and in the community, fundraise for charities and host school events.

As a girls' school, it is crucial that we develop student voice and nurture female leadership skills. Our well-established School Council includes elected representatives from each tutor group who meet with senior staff to decide on a programme of activities and to debate issues relevant to school life and the wider world. Developing students' sense of responsibility is important and we therefore ensure that there are opportunities for students to serve their community, for example by mentoring younger girls, helping to develop other students' reading skills as Reader Leaders or by becoming student form representatives and monitors.

Young women need expert guidance, up-to-date information and good decision-making skills to make individual choices, rather than opting for stereotypical paths.

They need to know where their choices will lead and to become familiar with work-related skills. All girls currently go out on work experience and have a professional interview – many have individual interviews with trained Careers Officer.

We reward students for their excellent achievement and hard work through an established rewards system. Girls' successes are celebrated publicly with the school community and personally at various ceremonies. After Year 11, students are invited back to school to celebrate their examination achievements at the annual Presentation Evening.

We believe that extra-curricular activities extend students' interests in the wider world, develop self-confidence and deepen their subject knowledge. There are many opportunities beyond the timetabled lessons for girls to pursue their individual gifts and talents.

Activities on offer in our lunchtime and after school clubs currently include ceramics, art, debating, Global Alliance, global book group, science, coding, robotics and languages. There are a wide range of sports clubs and fixtures, as well as music, drama and performance.



Educational trips – locally, in London, throughout the UK and abroad – are also a feature of school life. The Duke of Edinburgh scheme is now well-established and helps broaden students' experiences.

Our Learning Resources Centre is open daily before and after school. We are fortunate to have a librarian who can advise students on their fiction choices, help with individual research skills and support teachers by providing further learning materials.

OUR SCHOOL COMMUNITY

‘The school has identified and nurtured talents I didn’t even know existed in my child!’ PARENT

Partnership with Parents and Carers

We welcome and value the contribution of parents and carers and understand the vital role this partnership plays in your child’s success. We hold regular information and consultation evenings, parent focus groups and surveys. Parents can track their child’s progress through reports, parents’ evenings and our online systems. The Headteacher has an open door policy and welcomes contributions from parents and carers. We have a supportive community of parents and we are expanding the opportunities for parents to become more involved in the life of the school to include a Parent and Carer Association.

The school newsletter, The Greensheet is sent electronically to parents or carers and students. It contains reminders of important dates and details of all events taking place at school.





'There is a positive environment for girls that creates drive and ambition.' PARENT



Church Hill Walthamstow London E17 9RZ
Telephone: 020 8509 9446 Fax: 020 8509 9445
Email: info@wsfg.waltham.sch.uk
Website: www.wsfg.waltham.sch.uk
Headteacher: Ms H Marriott MA, NPQH