

**Kingsdale**  
Foundation  
School

Sixth Form  
Prospectus  
**2022**



**A Co-Educational 11-19 Academy  
of  
Advanced, Artistic & Academic Studies**

# A Very Warm Welcome to Our School

## *Kingsdale A Place to Be A Culture of Respect and Inclusivity*

*Think of a beautiful place where people want to be  
where there is a sense of purpose and possibility*

*Think of a community enriched by the power of diversity  
respecting rights and reflecting responsibility*

*Think of a place to inspire our creativity and to discover  
who we could or should be*

*Think of a community whose joie de vivre is to help  
each other overcome adversities*

*A place to transform and to be transformed  
A place to cherish and to be cherished  
A place to enable and to be enabled*

*Provocative partners we shall be but our raison d'être is about  
dreams and destinies*

*Don't think of you and me. Think of us and we.  
Unity of purpose is our identity*

*Participate and be the school we'd all be proud to see  
A cultured respected reflective place of study  
Everyone empowered to become the best that they can be*

*Fac Omnia Ad Dei Gloriam*





# Kingsdale Foundation School

First Class and Top of the Class!



*'This popular school is a harmonious environment where pupils learn how to be successful in modern Britain'* OFSTED 2017

**Applications for Sixth Form courses are now being accepted**



**An amazing achievement with 40 GCSE Grade 8 & 9s between them!**  
Charlotte Trudinger, Luca Varela, Vivien Parsons & Gabriel Bowen



**Elba, Ben & Iona have used their 7A's & 2A Grades at A Level to study Chemistry at Oxford & History at Durham and Cambridge!**

Take advantage of the chance to visit Kingsdale Foundation School and see for yourself how we bring the best out of our students. A tour of Kingsdale Foundation School enables you to realise why we receive such glowing reports. In the Autumn term 2021 you will have just that opportunity as we will be holding Sixth Form Open Days for entry in September 2021. Scholarships in Mathematics and the Creative & Expressive Arts are on offer for gifted and talented candidates who meet our entry requirements. Scholars receive free individual or small group tuition provided by expert professionals to the value of ~£1,000 per annum.

## Harnessing talent!

Kingsdale is a dynamic, exceptionally popular and progressive school that has invested £30m to develop an award-winning educational learning environment. In our specialist academic Sixth Form Campus, students study a combination of respected traditional, performing arts and creative A Levels in addition to alternative high value Level 3 courses. Our average class sizes are approximately ten in the Sixth Form. We also pride ourselves on our excellent links to the best higher education institutions in the world. A residential trip to Harvard and Yale in the USA is organized annually.

Prospective students are invited to come along to our Open Days or join our virtual tours to explore the fantastic opportunities and inspiring state-of-the-art facilities in our dedicated Sixth Form Centre. As Ofsted noted: 'The range of subjects taught is imaginative, well constructed and contributes well to students' achievement and their outstanding spiritual, cultural and moral development.'

## Kingsdale Sixth Form Open Days 2022

Wednesday 29th September 4 - 5.30 pm & 6 - 7.30pm

Wednesday 20th October 1.30 - 3.30pm & 4.30 - 6.30pm

Wednesday 10th November 1.30 - 3.30pm & 4.30 - 6.30pm

Wednesday 24th November 1.30 - 3.30pm & 4.30 - 6.30pm

**Visits by Appointment Only. Virtual tours will be taking place and broadcast live during each event!**

**Visit [www.kingsdalefoundationschool.org.uk](http://www.kingsdalefoundationschool.org.uk), call 020 8655 9723  
or email [sixthform@kingsdale.southwark.sch.uk](mailto:sixthform@kingsdale.southwark.sch.uk) for a Prospectus  
Alleyn Park, Dulwich, London SE21 8SQ**

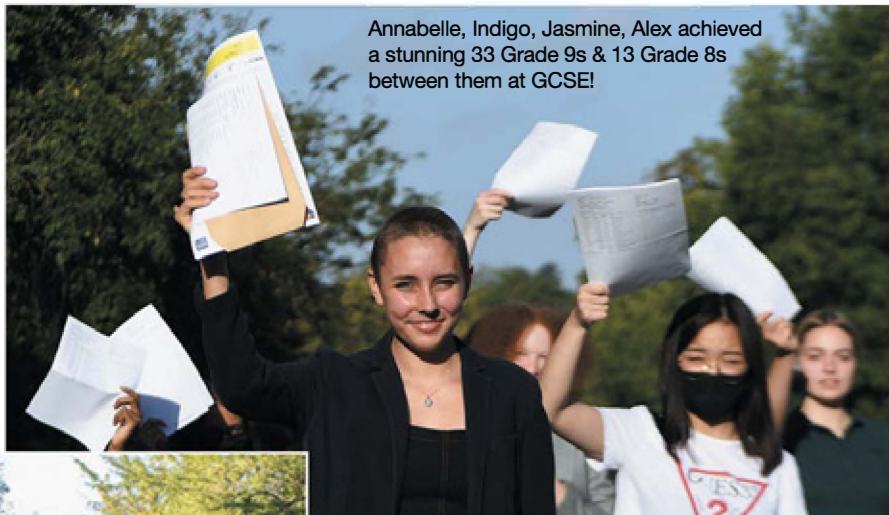


# Students Celebrating Outstanding GCSE Results at Kingsdale Foundation School

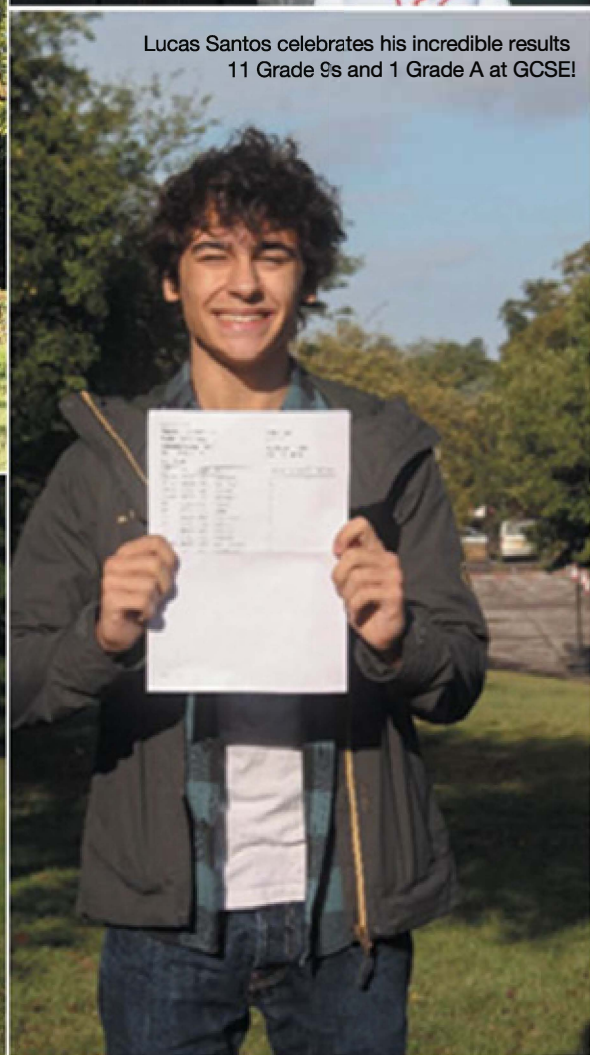
## Our GCSE results this year were one of our best ever.

We have many excellent individual and collective successes to celebrate as a result of the incredible dedication and hard work of students and staff over the previous two unbelievably challenging years.

Our examination outcomes indicate that 90% of students attained a good or better pass in both English and Mathematics and 50% of the cohort secured a strong pass in the English Baccalaureate. These are highly praiseworthy and proud achievements for this cohort of amazing students!



Annabelle, Indigo, Jasmine, Alex achieved a stunning 33 Grade 9s & 13 Grade 8s between them at GCSE!



Lucas Santos celebrates his incredible results 11 Grade 9s and 1 Grade A at GCSE!



Rosie, Theo, Nikole, Lucas, Solomon and Isobel achieved an incredible 32 Grade 9s & 16 Grade 8s between them at GCSE!



**KINGSDALE**  
FAC OMNIA AD DEI GLORIAM





# Kingsdale Foundation School Academy


**Headteacher:** Mr S H Morrison


**DfE number:** 210/4265

**Specialisms:** Mathematics and Performing Arts

 020 8655 9723

 [www.kingsdalefoundationschool.sch.uk](http://www.kingsdalefoundationschool.sch.uk)

 [sixthform@kingsdale.southwark.sch.uk](mailto:sixthform@kingsdale.southwark.sch.uk)

 Alleyn Park, Dulwich SE21 8SQ

## Courses and subjects offered:

### A LEVEL SUBJECTS

- Art
- Art Textiles
- Art Photography
- Biology
- Business Studies
- Chemistry
- Classics
- Computer Science
- Economics
- English Literature
- Film Studies
- Food Technology
- French
- Further Mathematics
- Geography
- German
- Government and Politics
- History
- Latin
- Mathematics
- Music
- Music Technology
- Philosophy
- Physical Education
- Physics
- Product Design
- Psychology
- Sociology
- Spanish
- Theatre Studies

### GCSE RE-SIT SUBJECTS

English  
Mathematics  
Health and Social Care  
Business Studies  
Science (Double)

### How to apply:

For full details on how to apply, please visit the school's website.

### Academic entry requirements:

#### A levels

Minimum of six 9 to 6 grades at GCSE including English Language and Mathematics. Individual subjects may require specific grades in particular qualifications to enable study of a designated course.

#### Level 2 transition courses

Minimum of five GCSEs at grade 4 or equivalent including a minimum of three GCSEs at grade 5 or above, one of which must be English or Mathematics.

For further information, please refer to the school's post 16 prospectus and application pack.

### Published admission number:

The published admission number for year 12 is 30. This is the number of places which will be offered on an annual basis to eligible external applicants only. If fewer than 95 of academy's own year 11 pupils transfer into year 12, additional external pupils will be admitted until year 12 meets its capacity of 125.

### Post 16 scholarships:

Students at Scholarship level at Key Stage 4 at Kingsdale will be granted an automatic scholarship at Key Stage 5 on entry to the Sixth Form subject to the usual conditions. Scholarships in Mathematics and the Creative Arts will be made available to external applicants who meet our entry requirements and show the necessary aptitude. Scholarships will continue to be paid at a nominal rate of £1,000 per annum.

## Oversubscription criteria 2021(summary):

### Contact us for full criteria

If year 12 is oversubscribed then, after the admission of student! with special educational needs where the school is named on the statement or education health and care plan, the criteria will be applied in the order in which they are set out below to determine which student should be given priority for the places available on chosen courses, providing they have met the sixth form entry and course requirements:

1. Children in public care (looked after children) or children who were looked after but ceased to be so because they were adopted (or became subject to a residence or special guardianship order) i.e. previously looked after.
2. Where professional evidence indicates that there are particular psychological, medical or social needs which the school's learning support faculty agrees only Kingsdale has the capability of addressing or meeting and significant difficulties would arise were the applicant to attend a different school.
3. Students will be ranked by their average point score for their best five qualifying subjects for the course they wish to study.
4. Random allocation. This process will be supervised by a person not employed by or independent of the school (see Note 8 of Kingsdale's admission policy).



Kingsdale Foundation School

WHAT IS IT LIKE  
TO STUDY HERE?

"Opportunity is the word that defines Kingsdale. It is a school that recognises hard work and then rewards it more than proportionately. Throughout my two years sixth form study I have been afforded various opportunities from learning to fly to doing work experience at the United Nations. The high standards set by Kingsdale have enabled me to study at Oxford University next year."

Josh Year 13 Student

### Open Evening Dates for September 2022 Year 12

Entry \*By prior appointment only

Wednesday 29th September  
4 - 5.30 pm & 6 - 7.30pm

Wednesday 20th October  
1.30 - 3.30pm & 4.30-6.30pm

Wednesday 10th November  
1.30 - 3.30pm & 4.30 -6.30pm

Wednesday 24th November  
1.30 - 3.30pm & 4.30 -6.30pm

Email: [sixthform@kingsdale.southwark.sch.uk](mailto:sixthform@kingsdale.southwark.sch.uk)



# Music Scholarship



The Post 16 Music Scholarship programme is centred around maximising the musical aptitude of Kingsdale students at the highest level. It is an opportunity for talented musicians to further develop their skills as performers, composers and musicologists with a view to gaining excellent results in instrumental exams and A Levels, as well as providing the skills required to gain offers from the most competitive and prestigious music courses at conservatoires and universities.

Post 16 Music Scholars have priority access to the outstanding music facilities at Kingsdale, including use of the recording studio; access to our dedicated network of Apple Mac computers equipped with Logic Pro; use of eight purpose built music practice rooms and our music auditorium. Kingsdale Senior Scholars get opportunities to perform at the Royal Albert Hall, Royal Festival Hall and many other famous venues.

All applicants are invited to attend an audition in which they are asked to perform two pieces of music (either instrumental or vocal). This is followed by a short informal interview on the candidates' musical experiences and interests. Composers are also welcome to bring a selection of their work.

The Full Post 16 Scholarship includes:

- One-to-one Instrumental/Vocal lessons with one of our specialist visiting music teachers (including teachers from the Royal Academy of Music, Royal College of Music and Trinity College of Music)

Participation in designated ensemble rehearsals and concerts

Solo performance opportunities in a number of internal events and external venues

Free tickets to concerts at prestigious venues

Workshops with professional musicians

Small group music theory and aural lessons

- Trips to university music departments and conservatoires
  - Attendance at student conferences for A Level Music and Music Technology
  - Attendance at seminars and workshops led by professional orchestras
- Preparation for conservatoire auditions and university interviews
- Participation in outreach programmes to primary schools and care homes
- Opportunities to take up further instrumental or vocal studies

Recent alumni of the Kingsdale Music Department have gone on to study music at the Royal Academy, Trinity College, Guildhall School of Music and Drama, Bristol University, York University, Goldsmiths College, Nottingham University and the Royal Birmingham Conservatoire. Senior Scholars operate as role models for the Music Department both inside and outside of the school.

For all Post 16 Music Scholarship queries, please contact Mr J Jones, Director of Performing Arts at [performarts@kingsdale.southwark.sch.uk](mailto:performarts@kingsdale.southwark.sch.uk)



# Art Scholarship



The Art Scholarship programme enables our Post 16 gifted and talented students to have access to accelerated learning practices in Fine Art, Textiles and Photography. The programme is designed to broaden the knowledge of Art for theoretical skills in the subject. This specialist programme will also help them achieve excellent results in their external examinations.

We also prepare students for Art Foundation and university courses. In order to apply for the external scholarship you will need to submit a portfolio of recent personal art work which may include both 2D and 3D art work, as well as sketchbooks. If you are currently a scholar at Kingsdale, a submission of a portfolio will not be necessary.

The Art Department has extensive facilities including a ceramic room with a kiln, a photographic darkroom and an Apple Mac computer suite. Students are encouraged to utilise the facilities on offer.

Those students who are part of the programme will participate in a wide range of exciting and inspiring sessions including:

- Workshops lead by educators from external agencies such as the Dulwich Picture Gallery and the Courtauld Institute.
- All students will participate in life drawing workshops.

- Outreach sessions lead by practicing Artists in Residence.
- Art competitions organised by leading galleries and Art institutions such as the ARTiculation Prize in collaboration with the Roche Court Educational Trust.
- Students will be invited to take part in workshops with external agencies and Art institutions, such as the Royal Drawing School, the Tate Educational Art Workshops and the South London Gallery Drawing Club. They may also attend lectures and talks run by the leading galleries.
- Students will participate in community Art Projects.
- Students will receive individual tutorials to ensure they are working to their full potential and enjoying the programme.
- Students will be invited to visit exhibitions at the main London galleries.
- Students will put an exhibition together celebrating their artwork.

Post 16 Art Scholarship students will receive specialist equipment to help them with their studies and are expected to seriously consider pursuing an art related career or studying an art related subject further at university or a conservatoire.

For further enquiries contact Mrs G. Howell,  
Director of Art, Design & Technology Faculty  
[artd&t@kingsdale.southwark.sch.uk](mailto:artd&t@kingsdale.southwark.sch.uk)



# Mathematics Scholarship

## Mathematics Post 16 Scholarship Programme

Prospective students make an application when applying to Kingsdale Sixth Form by completing our Post 16 Mathematics Scholarship form. Candidates will be required to take a Kingsdale Senior Mathematics Scholarship test, which together with their qualifications, a short interview and reference will determine whether the student gains scholarship status in this area. The assessment process lasts approximately one hour in duration.

The programme is designed to expose students to university Mathematics courses that they could consider whilst studying Mathematics at Sixth Form. A Senior Scholar participates in student conferences and workshops organized by various universities. Scholars are also given the opportunity to experience taster days at different universities and will be taught a range of mathematics modules by lecturers. Part of the sessions are used to prepare students for their C1 to C3 exams including S1 and D1 modules.

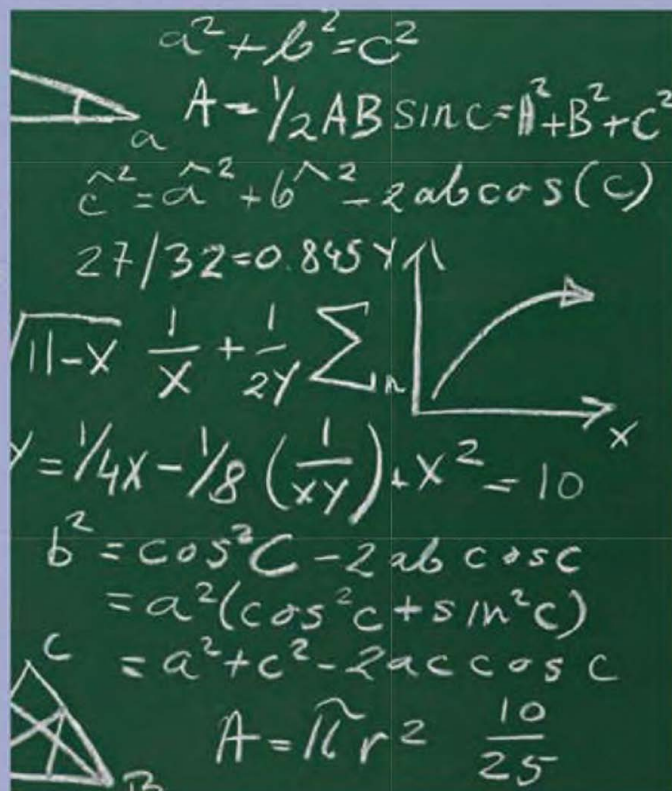
Within school, students will be mentored by a Mathematics teacher who will be supporting his/her progress. A plan of action will be agreed between the student, mentor and the coordinator as to how to best support the scholar to achieve the goals set and to progress onto the most prestigious university courses or career pathways.

Senior Scholars operate as role models for the Mathematics Department both inside and outside of the school.

### Requirements:

Students must be planning to study a mathematics related degree course at university or equivalent at the end their programme of study in the Sixth Form. Applicants who qualify to study Further Mathematics or Physics at A Level may have an advantage.

For more information contact Mr Alhmali Director of Mathematics





# Theatre Scholarship



## What we are looking for in a theatre scholar:

Someone with a passion for Theatre and the Arts with an experience of both performing and directing for stage.

### Application process:

- Completion of Post 16 Scholarship Form
- Students applying for the scholarship must have chosen to study Drama and Theatre studies at A level.
- Evidence of a wider interest in the subject
- 15 minute interview
- Pre prepared performance of a 2 minute monologue of your choosing

## What we are offering to our theatre scholars:

The scholarship will include a personalised programme that could focus on either a specific area or range of areas within the theatre in which the scholar may wish to specialise.

### Other benefits include:

- Free theatre tickets.
- Places on specialised courses that focus on directing, acting and producing.
- Working with professionals and attending events led by professionals.
- Attendance at a range of specialised courses that focus on the art of direction, acting and production. Responsibility for the leadership of

The Kingsdale Theatre Company.

- One to one support with an acting coach for auditions.
- A visit to the 'Careers in the Arts' fair.
- A range of different work experience placements in theatres and with companies around London organised by the school. This will be an opportunity to explore a number of different roles within the Theatre Arts.
- Opportunities to attend a number of professional castings.
- Half termly visits to the theatre, this equates to at least 6 visits per year and in most cases will include more.
- Financial support towards costs incurred at auditions for further education courses.
- A yearly development plan where you will be able to highlight a number of development opportunities of which you may wish to participate.
- Mentoring.

## What is expected of you as a scholar?

- Commitment and dedication to the subject.
- Meeting all deadlines.
- 95%+ Attendance.
- Promotion of the subject at Open Evenings and a number of school events.
- At least one performance per year with The Kingsdale Theatre Company.

For more information please contact

Mr Q. Golding, Head of Drama  
[performarts@kingsdale.southwark.sch.uk](mailto:performarts@kingsdale.southwark.sch.uk)





**Open Evening Dates for  
September 2022 Year 12 Entry**

**\*By prior appointment only**

**Wednesday 29th September**

**4 - 5.30 pm & 6 - 7.30pm**

**Wednesday 20th October**

**1.30 - 3.30pm & 4.30-6.30pm**

**Wednesday 10th November**

**1.30 - 3.30pm & 4.30 -6.30pm**

**Wednesday 24th November**

**1.30 - 3.30pm & 4.30 -6.30pm**

Kingsdale





Thank you for visiting Kingsdale  
**‘The most sought-after secondary school in London’**



**email: [sixthform@kingsdale.southwark.sch.uk](mailto:sixthform@kingsdale.southwark.sch.uk)**



**Kingsdale 11-19 Foundation School**  
Alleyn Park, Dulwich  
London SE21 8SQ  
Telephone: 020 8670 7575 Fax: 020 8766 7051  
Email: [info@kingsdale.southwark.sch.uk](mailto:info@kingsdale.southwark.sch.uk)  
Web: [www.kingsdalefoundationschool.org.uk](http://www.kingsdalefoundationschool.org.uk)  
Headteacher: Mr S.H.Morrison

