



# Mill Hill

**Instilling values, inspiring minds**

Grimsdell | Belmont | Mill Hill School | Mill Hill International

## Grimsdell

**Mill Hill Nursery and Pre Prep School** | For pupils aged 3 to 7







# Welcome

**Key facts about Grimsdell**  
Co-educational Pre-Preparatory School

**3–7**  
AGES

**Stay and Play**  
AFTER SCHOOL CARE  
3:15–5:30PM

**18**  
AVERAGE CLASS SIZE

**10 miles**  
FROM CENTRAL LONDON

**No exams**  
FOR ADMISSION TO  
BELMONT AT 7+

**Part**  
PART OF THE MILL HILL SCHOOL  
FOUNDATION WHICH IS SET IN OVER  
150 ACRES AND GIVES PUPILS A SMOOTH  
TRANSITION TO BELMONT AND MILL  
HILL SENIOR SCHOOL

---

## We warmly welcome you to Grimsdell Pre-Preparatory School, a happy and caring school where we understand your child is an individual.

---

At Grimsdell we develop and celebrate your child's character and strengths. Childhood is a special time of wonder and joy so our curriculum offers your child exciting and interactive ways to explore, enquire and discover. Your child will be immersed in deep, meaningful learning experiences that will both inspire and motivate them.

We aim to equip children with the adaptable tools and skills they will need for 21st century life and as a result Grimsdell children thrive in all kinds of situations and tackle challenges with a sparkle in their eyes. It is a pleasure to know them.

**The Grimsdell Way**  
Above all we value kindness, and expect our children to be responsible for their actions and have moral integrity. We:

- > treat others as we would like to be treated ourselves
- > are honest
- > share
- > forgive
- > are kind and helpful
- > are cooperative
- > do our best to be our best
- > share our worries
- > listen to each other



*Kate Simon*

**Kate Simon BA Hons, PGCE**  
Head





*Space all  
around us*

---

The four schools of the Mill Hill School Foundation are set in over 150 acres of beautiful grounds, with woods, fields and sports pitches as far as the eye can see. Central London is only 10 miles away, but you would never know it.

---

Our own grounds at Grimsdell include woods for our Forest Schools, a Science Garden, and separate play areas for the youngest children. Our playgrounds are exciting and imaginative, with adventure equipment, areas to tell stories and do crafts, and a stage. You can tell we love to be outdoors!

**Outstanding facilities**

The other schools of the Foundation are our neighbours so our children use Belmont's grounds and coaches for sport, and Mill Hill School's swimming pool, athletics fields, and theatre. We share the Foundation Chapel: at Mill Hill we are very much a family, from the youngest to the oldest.



# Happy children

Girls and boys learn,  
work and play together.



Your child will quickly develop excellent social skills and learn to be adaptable and emotionally intelligent. They will make friends with boys and girls and know they are equal.

When young children are encouraged to respect each other and always to see people as individuals, they carry this with them through life. They bring the best out of other people, and blossom themselves because they are ready to seize every opportunity. Our pupils' willingness to try anything is one of their biggest strengths.

## Families at Grimsdell

Children develop best when their teachers and family work together to help them learn and be happy. We will always keep you well informed about your child's progress, and welcome you into school whenever you want to talk to their teacher. Your involvement in school events, projects, workshops and trips makes them very special for everyone.







Can you remember how exciting life felt when you were as young as your child is now? Our approach to learning is to harness that energy and enthusiasm so that your child will love coming to school every day.



#### **Creative curriculum**

Combining academic rigour with 21st century skills. Our Creative Curriculum provides depth in the coverage of skills in all subject areas and allows children to recognise the links in their learning. Children are interested, excited and curious to learn and discover.

Our aim is to instil in your child a deep and natural love of learning that will stay with them forever. Our curriculum is rich and diverse and extends well beyond the National Curriculum. It is both demanding and exciting, giving your child the chance to excel in so many areas.

#### **The growth mindset**

We encourage every pupil to embrace challenge and to understand that success comes from hard work and persistence. At Grimsdell, we welcome failure because only by willing to risk failure do we try things we find difficult. We teach this positive mindset actively so your child will understand how they best learn from a young age.





---

“I love the teachers  
and I am really  
interested in  
everything  
we learn.”

Yr 2 Pupil

---

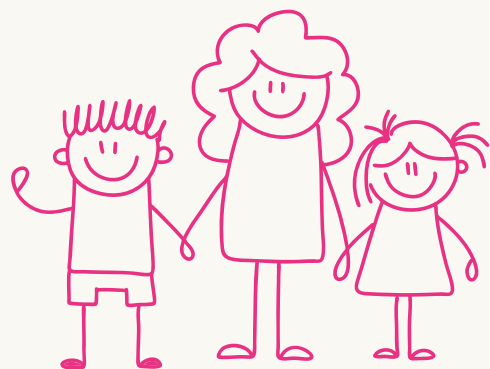


At Grimsdell we teach our themes across the whole school, each year group tackling it in a different way and developing their skills in core subject areas such as reading, writing and arithmetic.

We encourage children to question, enquire and problem solve. They work in groups or pairs to discuss, debate and think critically and creatively. They build strong verbal skills so they are keen and able to write about their ideas and thoughts. Practical tasks test their thinking and challenge them to be creative, all the while building their independence and confidence.

#### **Taking soft skills seriously**

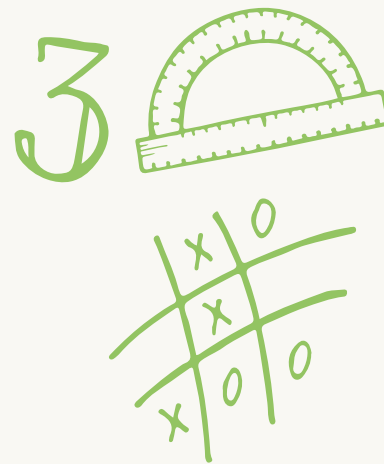
The four schools of the Mill Hill School Foundation have a shared approach and a curriculum that runs through from ages 3 to 18. A central element of this is our active teaching of interpersonal skills, emotional intelligence, teamwork and leadership, and your child's ability to think on their feet and cope under pressure. At Grimsdell, we nurture these skills from early childhood, giving your child the ultimate head start in our ever-changing world.





**“I really like Maths because it's a fun thing to do and it gets your brain working.”**

Yr 2 Pupil



#### Mathematics and IT

Your child will acquire a deep understanding of the number system, and a mastery of concepts. They will learn highly developed problem-solving and application skills so they will be ready to tackle complex mathematical challenges with confidence.

Grimsdell children learn to be creative and active in their approach to IT. We teach it as a discrete subject from the age of 3, using programmable toys, multi-media software and resources, and bring it into our theme whenever we can.

#### English

At Grimsdell, we recognise that the key areas of speaking, listening, reading and writing are fundamental to children's learning.

We promote high standards of Literacy by equipping children with the skills of spoken and written language, whilst developing their love of reading.

Our Creative Curriculum increases pupil's interest, involvement and achievement in English by providing children with exciting 'hands on' experiences to help stimulate their imagination, express their opinions and write for a variety of different purposes. Children are immersed in literature from a range of genres, both fiction and non-fiction.

#### Preparing for Belmont

Our curriculum prepares children for the rich, broad and challenging work they will do when they move up to Belmont.



# We're out in our woods throughout the year because Forest School is a core element of our curriculum.



## Forest School

The children play hide and seek, build shelters, light fires, cook, make environmental art and do role play. They learn safely to use tools such as potato peelers, loppers, and bow saws, and about the forest itself including naming the trees and plants and identifying animal habitats. Forest School is definitely one of our favourite lessons.

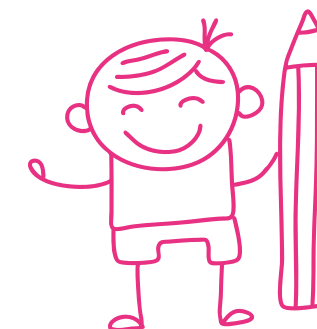
## More than a walk in the woods

Forest School is transformative: not only do the children love it, but they grow visibly more confident as they play and carry out tasks in the outdoors. With each activity they learn to work in teams, to trust each other and to understand risk and responsibility.

They develop fine and gross motor skills, learning to use their bodies carefully and skilfully, and to look after themselves and the people around them. As they gain experience and understand the boundaries of behaviour they begin to lead their own activities, and we see them become remarkably resilient and independent.








---

**We give your child individual attention: we understand their strengths, weaknesses and enthusiasms.**

---

#### **Powerful learning**

Our classes are small, and a classroom assistant works alongside every teacher giving your child plenty of support throughout the day.

Because we all learn differently we adapt our approach for each pupil so your child will always be learning in the best way for them.

We give our pupils meaningful feedback so your child will learn to reflect, feel positive about improving, and know what they need to do next.

Our approach means that our pupils are effective, self-motivated learners who share our high expectations and belief in themselves.

#### **Specialist, dedicated teachers**

The teachers at Grimsdell form a close team of motivated, skilled professionals who work together to make sure that in every lesson, every day, your child's learning is of the highest quality.

We have specialist teachers in PE, Sports, Music, Computing, RE, and Forest School, who work with the form tutors to plan, consider how best to support each pupil in each lesson, and create exciting, inspiring and productive lessons across the curriculum.



# A home from home

**Grimsdell is wonderfully welcoming: our school is a natural, friendly place where everyone feels part of our family. We will make sure your child feels safe and nurtured here.**



## The School Day

Morning Nursery runs from 8.20 to 11.35. Alternatively, our afternoon Nursery runs from 12.20 to 3.05.

Reception arrive between 8.15 to 8.30 and depart at 3.00, with Year 1 and Year 2 arriving between 8.15 to 8.30 and departing at 3.05. We have an entire road to park on and a parking attendant to help parents.

The Head personally greets the children each morning, shaking their hand, making eye contact, smiling and wishing them good morning by name. Our popular after-school care facility, Stay and Play, runs until 5.30 with creative and stimulating activities for children of all ages.



## Our values

Grimsdell is a Christian foundation based upon the principles of religious freedom. Our pupils represent a wide range of faiths and cultures, and our assemblies place a strong emphasis on moral and mutual respect.

With our support your child will be ready to learn, develop their personality and become secure and confident in everything they do. Your child's class teacher and teaching assistant will get to know them well, we communicate often with you, and together with the specialist staff, Deputy Head and Head, your child will be surrounded by people who will always take care of their wellbeing.

## Grimsdell's Houses

Each child at Grimsdell is in one of our three Houses, making friends across the age groups and joining in academic and cross-curriculum events and competitions. House activities allow our young pupils to experience team spirit, a sense of belonging and healthy competition, preparing them for the more sophisticated and far reaching House experience that they will encounter at Belmont and after at Mill Hill.





## Our clubs

---

Ballet **Ball Skills** Board Games **Chess**  
 Clock Making Coding **Construction**  
**Creative Film** Drama **Fitness** Swimming  
 Football Healthy Cooking **Jewellery**  
**Making** Karate Lamda Exams **Mini**  
**Hockey** Mini Tennis Modern Dance  
 Mosaic Nature **Rounders** **Sewing**  
**Sing Up Choir** Street Dance Class  
 Tap Dancing Class **Choir** **Yoga**

---



### Cook, dance and sing: what do you love to do?

We offer a fantastic range of activities: our pupils are lively and curious so we love to feed their enthusiasm. We design our activities to spark your child's creativity. We inspire them to try something new and learn about leadership and teamwork. The talents and interests we cultivate now will nourish them in the future.

### Immersive approach

Every term we devote a week of learning to a specific area, ensuring that all learning links in with this aspect of the curriculum and promotes the subject with an inspiring and immersive approach. The subject matter is relevant and fresh with examples being: Pet Week, Language Week and Board Games Week – along with some old favourites such as National Book Week, National Science Week and Environment Week.

### School Trips

Trips enhance the curriculum by bringing learning to life in a wider context. These experiences allow children to bond, develop independence and a sense of community within the year group with their peers and teachers. Parent volunteers attend all our trips and every parent will have the opportunity to accompany a school trip during their child's time at Grimsdell.






---

**“The school is great because we do lots of fun things.”**

---

Yr 1 Pupil

---



#### Drama

Our children love drama! We incorporate it into the curriculum almost daily. We hold a whole school Nativity at Christmas in our own chapel, and each year group puts on its own production, including dance and music, which they perform at the Mill Hill School Theatre, on a wonderful stage with lights, music, costumes and scenery. Every child has a speaking part and is given their time to shine.

#### Music

We are a Sing Up platinum school and we love to sing: we sing in class, between activities, when we are lining up and when we leave assembly. Singing helps our children become more confident and creative. It allows children to focus quickly, naturally and is also great fun.

We're hugely proud of our choir: they have performed at the Southbank and have been part of the National Music for Youth finals several times.

Your child will read music and develop skills in pitch, rhythm, performance, music appreciation and composition. They will learn a tuned percussion instrument, the recorder and the keyboard, and can join violin, cello and keyboard clubs.





# A spring in our step

**In PE your child  
will learn vital  
skills for their  
development.**



Our specialist PE teacher will teach your child balance, co-ordination, gross motor skills, ball skills and team work and there is lots of variety, including gymnastics, games, large apparatus, tennis, swimming, athletics and dance.

Students from Mill Hill School run an annual sports festival for us, and our summer Sports Day is a highlight of the year. Everyone takes part, there is healthy competition, and teachers' and parents' races and a good old-fashioned tug o' war.

## Team sports

In Year 2 the children start to play team sports at Belmont, using its coaches and facilities. The children play netball, hockey, rounders and cricket for the girls, and touch rugby, football and cricket for the boys – it's a wonderful way to build their playing skills so they are ready for Year 3 sports at Belmont.





## Moving on to Belmont

The ties between Grimsdell and Belmont are extremely close: we co-ordinate our curricula and learning approaches, and from Year 1 your child will take part in Forest School, camps and workshops at Belmont. Year 2's weekly sports and other activities mean that Belmont soon feels almost as familiar as Grimsdell.

Once at Belmont they will be among friends – almost all Grimsdell children go on to Belmont – and make new friends among the new intake. Belmont's Year 3 teachers and Head of Lower School will already know your child and we know they will be settled and happy in their new school.

### **No exam, no stress**

While your child will be excited about moving up to Belmont, they won't be anxious because the transition is simple and stress-free from Grimsdell, with no need to take Belmont's external 7+ examination.



# Mill Hill School

Our children often walk through the grounds of Mill Hill School and look forward to studying there one day.



## Grimsdell Belmont Mill Hill

Our strong partnership with Mill Hill School means that Grimsdell pupils regularly work with their older counterparts. The exceptionally confident, kind, capable, well-rounded individuals who leave Mill Hill are a constant inspiration to our pupils.

Belmont's pupils transfer directly to Mill Hill School in Year 9 without the need to sit an examination. Once your child has joined our Foundation of schools, you can relax, knowing that we will give them an exceptional education in our school community until they are 18.

### Beyond Mill Hill School

Mill Hill pupils go on to study and work in a limitless range of fields from medicine and engineering to literature and the arts; from digital media to acting and everything in between. Our pupils grow into fine young adults, strong individuals who are equipped to take their own path within school and beyond.



We look forward  
to welcoming you  
at Grimsdell and  
showing you what  
we have to offer.

## Next steps

### Arranging a visit

It's the best way to find out if we are right for your child, and to answer all the questions you may have.

Children usually join Grimsdell in Nursery (age 3+) and Reception (age 4+).

For more information, or to apply and book a visit, please contact our registrar:

**Kimberley Andrews**  
020 8959 6884  
kandrews@grimsdell.org.uk



### Getting to Grimsdell Mill Hill Pre-Preparatory School

Despite its rural setting, Grimsdell is within easy reach of central London, being served by bus, underground and overground train services. Close to the M1, M25 and A1(M).

#### Public transport

- 🚌 240 route
- 🚆 Mill Hill Broadway (direct trains to central London and St Pancras International)
- 🚶 Mill Hill East
- 🛣 M1/M25/A1

#### Grimsdell

Mill Hill Pre-Preparatory School  
Winterstoke House  
Wills Grove  
Mill Hill Village  
London NW7 1QR

020 8959 6884  
[millhill.org.uk/grimsdell](http://millhill.org.uk/grimsdell)



*Instilling values  
inspiring minds*

[millhill.org.uk/grimsdell](http://millhill.org.uk/grimsdell)



**Grimsdell**

Mill Hill Pre-Preparatory School  
Winterstoke House  
Wills Grove  
Mill Hill Village  
London NW7 1QR

020 8959 6884

[millhill.org.uk/grimsdell](http://millhill.org.uk/grimsdell)