



Ark Globe  
Academy

# Primary Prospectus



Preparing our students for university and to be leaders in their community



“Achievement in the primary school is outstanding. Pupils’ attainment has been consistently above average for the past three years and their progress is well above average.”

Ofsted



WE ARE  
HARD WORKING.

WE ARE  
FAMILY.

WE ARE  
CARING.

WE ARE  
THOUGHTFUL.



# Welcome

## to Ark Globe Academy Primary

Thank you for choosing to read through our prospectus whilst considering Ark Globe Academy Primary for your child. Through our prospectus we hope that you will begin to gain an understanding of the exceptional experience and education that we can offer your child.

We have the highest ambitions and expectations for all our pupils and we aim to provide an excellent education that offers every pupil the choice of going on to university after school. Your child will also have a guaranteed place at Ark Globe Secondary, which is in the top 10% of schools nationally for achievement.

We are committed to outstanding teaching and learning which is achieved through a combination of challenge, support, encouragement and praise to ensure that all our pupils fulfil their true potential.

Our Early Years provision was judged as 'Outstanding' by Ofsted in November 2021 and we won a Specialist Schools and Academies Trust Educational Outcomes Award for our outstanding progress. The award is to recognise our achievement of being in the top 10% of primary school nationally for value added.

At Ark Globe Academy Primary you will find a warm, welcoming and purposeful environment, with a highly dedicated and enthusiastic team of staff committed to ensuring that your child receives the best education possible.

We very much welcome visits to the school, so if you would like to find out more, please contact us to make an appointment and we would love to show you around.

**Samantha Colburn**  
**Primary Principal**  
**Ark Globe Academy**



It gives me great pleasure to welcome you to Ark Globe Academy.

We are an all-through academy, our mission statement is preparing our students for university and to be leaders in their community. Children joining us at age four can stay with us until they leave school at 18 ensuring consistency in their education and the establishment of strong and lasting relationships. Students leaving us at 18 enter top universities at three times the state school average and at the same rate as students attending private schools.

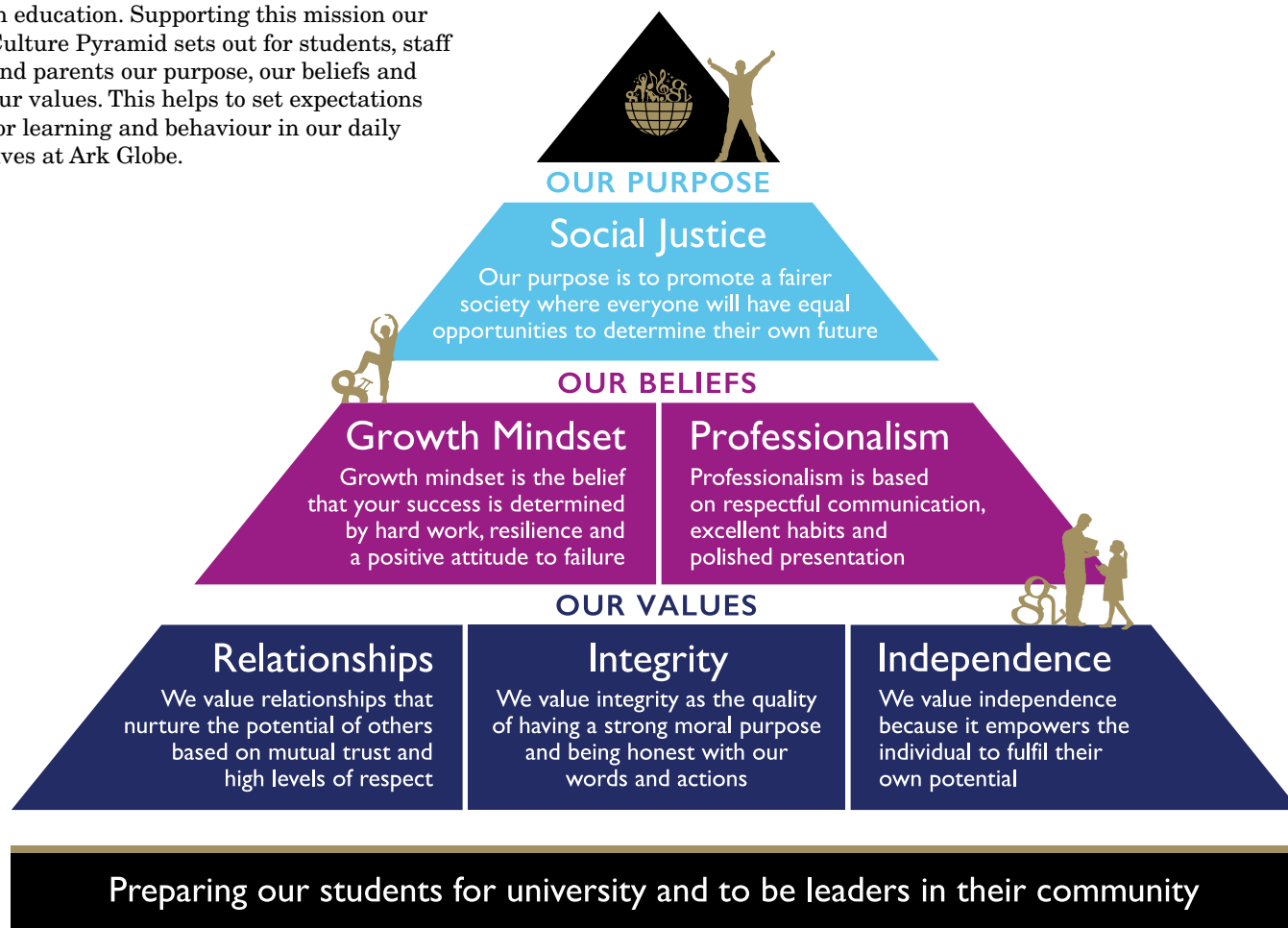
Ark Globe Academy is a happy academy and we maintain high standards in relation to our Culture Pyramid Expectations. Our pupils wear their uniform with pride. Please enjoy reading more about our brilliant primary school and come and visit us to see what we can offer your child.

**Matt Jones OBE**  
**Executive Principal**

# Our Culture Pyramid

## Our mission

Our mission is to prepare our pupils for university and for them to become leaders in their community. Our aim is for Ark Globe Academy to become a beacon of excellence in education. Supporting this mission our Culture Pyramid sets out for students, staff and parents our purpose, our beliefs and our values. This helps to set expectations for learning and behaviour in our daily lives at Ark Globe.





# Academic achievement — no excuses

Ark Globe Academy has very high expectations for all its pupils. With good teaching, encouragement and support every child can realise his or her full potential.

## Our Ethos: Personal responsibility and mutual respect

We maintain a respectful and orderly environment throughout the academy. We teach and encourage pupils to behave well and take responsibility for their actions.

## Commitment

Families and teachers sign a home-school agreement, demonstrating our shared commitment to helping each child succeed.

## An all-through education

Ark Globe Academy has classes from Reception to Sixth Form, Ark Globe pupils can spend their school career with us, building strong bonds with friends and easing their transition to secondary school. Siblings are prioritised in the admissions process so that they can attend the same school.

## Small schools

The Primary School is part of the academy whilst also having its own strong identity. We have our own Primary Principal and separate buildings and play areas.

## Our staff

We have a strong team of dedicated, highly qualified teachers and support staff. Your child's teacher will always be available to discuss your child's needs or any concerns you have.

## Parental involvement

Children do well when their parents are involved in their education. We encourage parents and carers involvement and build strong relationships with our pupils' families. We will send you regular newsletters and progress reports and welcome you to attend our Celebration assemblies.



“The school's  
work to keep pupils  
safe and secure  
is outstanding”.

Ofsted







# Our curriculum

## Our specialist subjects

Ark Globe Academy specialises in mathematics and the performing arts, and every child benefits from the specialisms throughout their Ark Globe career.

It is essential that every pupil has a firm grasp of mathematics. We teach a distinctive, world leading, maths curriculum. Our aim is to ensure that every child achieves mastery of mathematical concepts, computational skills, problem solving and the application of mathematics to daily life activities. We teach mathematics topics in depth so that children understand the “how” as well as the “why”.

Our music and art subjects are taught by specialist teachers and involve every pupil in creative projects that build confidence and self-discipline and contribute to the life of the academy. Our programme includes performances by pupils and by visiting artists. Our curriculum is enhanced by speaking and listening activities involving role play and drama.

Our music programme gives pupils the knowledge and skills to enjoy and develop their interest.

The primary programme focuses on singing and on instruments which are taught and played in groups. We have a school choir and teach a variety of musical instruments. All our pupils have the opportunity to perform at Ark Schools Music events held throughout the year.

## The Early Years Curriculum

The curriculum is divided into seven areas of learning:

The three **prime areas** are:

- Personal, social and emotional development
- Communication and language
- Physical development

The **four specific areas** of learning are:

- English
- Mathematics
- Understanding the world
- Expressive arts and design


We provide a stimulating indoor and outdoor learning environment where children are motivated to communicate, explore and learn independently. A carefully planned, broad range of activities promotes a rich, age appropriate, learning experience across the curriculum.

Reception pupils follow the Ark Schools Early Years Foundation Stage curriculum which gives every child a firm foundation:

**English** — focusing on speaking and listening, reading, writing using synthetic phonics (Read Write Inc.) and other reading strategies.

**Mathematics** — our world leading mathematics programme uses practical and written activities that help children develop their numerical and problem-solving abilities.





83% of our Year  
1 pupils passed  
their Phonic  
Screening test  
in 2022.

“Every child  
learns to read  
at Ark Globe  
Academy Primary”

Ruth Miskin, Founder of  
the ‘Read Write Inc.’  
phonics programme

## English

This is divided into three areas:

### Speaking and listening

The children are given opportunities to experience different kinds of speaking and listening. It is essential that they know how to express themselves and how to listen to other people's opinions and ideas. We use a wide range of drama techniques as a means of providing opportunities for the children to express themselves in different situations.

### Reading

Our aim is that every child should enjoy reading; both for life skills and pleasure. Children learn to read through a synthetic phonics programme (Read Write Inc.). This programme is complemented with a range of reading comprehension activities. Children also learn through individual reading and paired reading. Children are encouraged to become independent readers as they move through the school and we strongly encourage parents to read with their children. Our expectation is that all pupils read every night at home.

### Writing

We teach both narrative and non-fiction writing within units of work linked to high quality inspiring texts often by well known authors. Extended writing tasks are completed on a weekly basis across the curriculum.

“At the end of Key Stage Two (age eleven), 76% of pupils achieved the national age related expectations in writing whilst in reading 84% of pupils reached the national expectation.” *SATs 2022*

## Mathematics Mastery

Ark Schools follow a unique maths curriculum based on the world-leading Singapore approach; Mathematics Mastery.

Mathematics Mastery complements the 2014 national curriculum effectively by:

- An emphasis on pupils mastering the basic knowledge and skills in mathematics. By studying fewer areas of learning pupils develop a greater understanding of whole number, fractions, geometry and statistics.
- Visual modelling helps pupils make the links between a concrete understanding and abstract application of mathematical concepts.
- Fewer areas of learning mean that teachers can focus on quality delivery supported by a rigorous scheme of work.

“In the 2022 Key Stage two mathematics tests, 79% of Ark Globe's primary pupils achieved national age related expectations.”





## Science

Children take part in investigative activities and experiments through which they acquire and develop scientific knowledge, skills and understanding. Science is taught separately as well as through cross-curricular links.

## Computing

Pupils have access to the technology including interactive whiteboards and wireless laptops to enhance their learning and learn computer skills. Children learn programmes including word processing, data handling and graphics. We also incorporate the use of computing into other subjects.

## Religious Education

We focus on developing pupils' spiritual, moral, social and cultural development by exploring a range of beliefs. Pupils are taught to be understanding and considerate to others both in the school and the wider community.

## Foundation subjects

History, geography, design and technology, RHE (Relationships and Health Education), music, French and art are taught through a creative and themed approach as well as in distinct lessons. We keep parents up to date on the topics being covered across each phase through our termly curriculum overviews.

## Physical Education

Regular PE is part of the curriculum and taught by highly qualified specialists. We encourage active play every day. Pupils are taught gymnastics, dance and athletics as well as team sports. Pupils in Key Stage 2 also go swimming at key points in the year.



## Assessment

Formal and informal assessments take place on a regular basis. Parents receive progress reports twice a year which includes targets for their children to work towards.

## Enrichment and extra-curricular activities

Education is about creative as well as academic achievement. We try to broaden our pupils' horizons and experiences through a wide variety of extra-curricular activities both sporting and non-sporting and to reinforce learning through regular educational visits.

## Assembly

We hold assemblies throughout the week and parents are invited to our Celebration assembly as well as other assemblies and events throughout the year.

## Homework

Children are required to read at home every night and complete a reading record daily. Each child receives homework every week in English and maths and sometimes other subjects. In addition, weekly spellings are also set.

# High expectations for every child

## Equal opportunities in the curriculum

We provide equal opportunities for all children. We recognise that different individuals have different needs. Our academy ethos encourages mutual respect and the expectation that everyone will fulfil their potential.

## Inclusion

We are committed to enabling every pupil to achieve his or her potential. We will follow the Government's 'Code of Practice' and Ark's 'SEND' policy to ensure early identification and high impact interventions are put in place. Support may be given in class, in a small group or out of class and will be delivered by a skilled team of teachers and co-teachers.

## English as an additional language (EAL)

Pupils for whom English is an additional language will benefit from emphasis on the core curriculum, gaining extra support until they reach the expected achievement for their age in English. Through careful assessment and a combination of small learning groups, our pupils have full access to the learning opportunities provided by the school.





“The progress of children in the early years is very rapid.”

Ofsted



## Lunch

A healthy lunch is central to a child's ability to learn. We encourage our pupils to eat a healthy meal each day which is cooked on the premises and caters for a broad variety of diets. Pupils may bring a healthy packed lunch, if preferred. For pupils attending a Southwark primary school setting, they will be eligible for a free, healthy school lunch.

## Attendance and hours

It is important that pupils attend school on time every day. We discourage absence during term time unless it is unavoidable. Please be aware that any holiday during term time is not authorised. School begins at 8:30am sharp and finishes at 3:30pm from Reception to Year 6.

## Uniform

All children must wear school uniform. Details are available from the school and on our website [www.arkglobe.org](http://www.arkglobe.org). The school jumper, tie, bag and PE kit can only be purchased from Whitehall Clothiers. All other items of uniform can be purchased from any retailer.





# Progressing through the academy

## Reception class

In Reception children begin to move from play-based learning activities to more structured practical activities. We offer full-time places for 60 children in one intake.

## Guaranteed place in Year 7

One of the benefits to joining Ark Globe Primary is that all our Year 6 pupils have an automatic place at Ark Globe Academy Secondary school, if they wish to transfer there. This means that your child's education can start in primary and continue all the way until the end of Year 11.

If your child wishes to continue from Year 6 to Year 7 there is no requirement to complete an online application via the local authority, which means that the process is quick and easy for parents.

As an all-through academy we provide the stability and continuity through the important transition to secondary school. Should a pupil wish to attend a different secondary school, please follow your local authority admissions process.



# Admissions

Ark Globe Academy is a non-selective, all-through school with no religious affiliations and serves children of all abilities. The primary school has places for 60 pupils each year in two classes. The Secondary school has a Pupil Admission Number of 180 pupils in Year 7.

Applications for admission must be made on Southwark Council's Common Application Form (CAF). When we admit pupils, we prioritise children with statements of special educational needs. Then, if our academy is oversubscribed, we offer places to children in the following order of priority:

- children who are in public care.
- children of a staff member who fills a post for which there is a demonstrable skill shortage as approved by Ark Schools. (This priority is limited to no more than one place in each form of entry in any year).
- children who have a sibling who already attends the school and who will continue to do so on the date of admission (for this purpose "sibling" is a whole, half or step-brother or step-sister or an adopted child resident at the same address).
- children of staff in the school may also receive priority where the parent has been employed in the academy for two or more years at the time of the application for admission (that is the year before admission). Priority is limited to no more than one place for each form of entry in any year.
- children who live closest to the school using a straight line distance from the main entrance of the academy to the main entrance to the child's home.

The school keeps a waiting list to fill any casual vacancies occurring if students leave during the academic year or withdraw from a place that has been offered.



## Appeals

Parents/Carers/Legal Guardians who are not offered a place for their child are entitled to appeal to an independent committee under the provisions of the School Standards and Framework Act, 1998. Parents/Carers/Legal Guardians wishing to appeal should complete an appeals form, available from the school office or from the Ark Admissions Team, Ark Schools, The Yellow Building, 1 Nicholas Road, London, W11 4AN.

For further information on this, please contact the Admissions Coordinator at the academy.

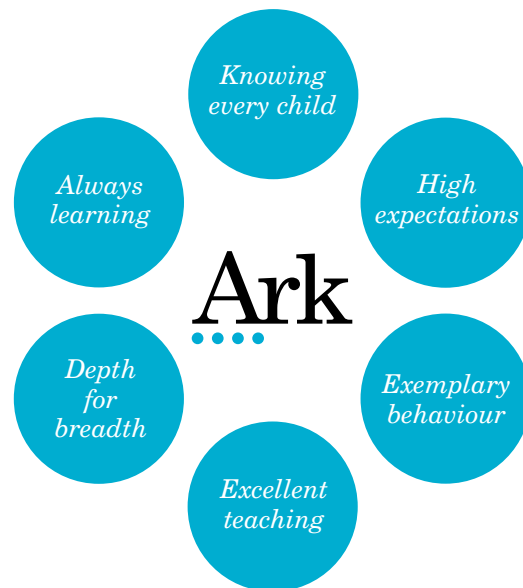


# The Ark Network

Ark Globe Academy is part of Ark, an education charity transforming lives through education. Ark has a network of 39 schools across the UK in London, Birmingham, Hastings and Portsmouth. Each school has its own unique character and ethos but are all united in the same mission — to ensure that every child, regardless of their background, has access to a great education and real choices in life.

Through high expectations and a strong focus on teaching and learning, Ark schools have achieved some of the best results in the country, but they are about more than just academic excellence. Ark schools want their young people to develop far beyond the classroom so provide a whole host of exciting extra-curricular activities and opportunities. Highlights include Ark's music programme of choirs and ensembles, debates and competitions, cultural trips and adventures exploring the wilderness. Students take part in work experience with some of the UK's biggest companies and summer schools at top universities.

Ark is dedicated to improving education systems across the globe, not just in our own schools. In partnership with others, Ark creates, incubates and launches education-focused ventures in the UK and internationally.



"I feel like Globe is a very special school. It takes care of you in the class, and when you are down, there are always teachers and friends to help you. Everybody is really nice here."

**Naqeeb**





# Ark Globe Academy

**Primary Principal:**  
Ms Samantha Colburn

**Executive Principal:**  
Mr Matt Jones OBE

**Ark Globe Academy**  
Harper Road  
London SE1 6AF

☎ +44 (0)20 7407 6877  
✉ [info@arkglobe.org](mailto:info@arkglobe.org)  
🌐 [arkglobe.org](http://arkglobe.org)  
🐦 @ARKGlobeAcademy  
📌 ARK Globe Academy

## We are Globe



The inside cover of this prospectus is an extract from the fantastic artwork created by our students through a project titled 'We are Globe'. The artwork is made of Ark Globe Primary, Secondary and Sixth Form students' self-portraits and their own words defining who we are, as a community.

To create this, our students and staff worked alongside professional artists, designers, producers, health and safety advisors, and a large team of site installers. It is a 35-metre wide, impactful artwork placed in our playground, on Harper Road and across our buildings. Uplifting and uniting, it reminds us of what an amazing community we are, at the same time showing off the great talent we have amongst our students.

We'd like to thank everyone who participated in 'We are Globe' project from December 2019 to September 2021.



# Ark Globe Academy

## Secondary Prospectus



Preparing our students for university and to be leaders in their community





“Students feel  
safe and valued.  
They feel proud  
of the school.”

**Ofsted**

# Welcome to Ark Globe Academy



At Ark Globe Academy we have the highest aspirations for all our children to ensure they are prepared for university and inspired to be leaders in their community. We offer our students a first class education based on high quality teaching and experiences outside of the classroom.

As Executive Principal, I am privileged to work with an amazing group of adults and children who are striving together to ensure every child has the opportunity to reach their full potential and pursue the career of their choice.

Our school is a happy school and we pride ourselves on the relationships our staff have with our students, caring for them throughout their education. We also work closely with families to ensure that all our students are committed to learning and develop the character necessary to take advantage of all the opportunities we provide.

Our academy was recognised by the Government in its Parliamentary Review as an example of excellent practice in education and we are ranked in the top 10% of schools nationally. We are proud of our student outcomes and destinations. All of our Year 13 students received an offer from a university, over 70% which were from a top third university. Our A Level and BTEC results make our Sixth Form one of the best in the country.

I encourage you to join us at our open events and contact us if you wish to visit at any other time.

**Matt Jones OBE**  
**Executive Principal**

# Why choose Ark Globe Academy for your child?

## Achievement and high aspirations

Our mission is to prepare our students for university and to be leaders in their community. We have the highest aspirations for every child at Ark Globe Academy to ensure they are ready for university and aspire to be the leaders of tomorrow.

## Care and commitment

Our dedicated, committed staff offer outstanding care and guidance for each child. Relationships underpin our achievements as we believe by knowing every child well we can help them achieve their true potential.

## Enrichment and opportunities

Learning for us reaches far beyond the classroom and we provide all children with numerous enrichment and leadership opportunities; from activities before and after lessons, to visits to the best theatres and links with high quality employers and universities.

## Partnering with our community

We are proud to be part of and serve our local community. With this in mind we ensure that our students are socially aware and contribute to activities which strengthen our neighbourhood.

“I have had so many amazing opportunities at Globe. Teachers are always there for you and the friendships you can make here really will ground you. Without the extra-curricular, I wouldn't have done well at the interviews for Cambridge.”

**Lauren, Ark Globe Alumna,  
received 3 A\*s in 2020,  
now in her final year at the  
University of Cambridge**





# Achievement for all

With the right teaching and support every child can realise their potential. Our culture of high expectations and achievement requires hard work and discipline. We do everything possible to ensure that every child achieves expectations for their age, every year:

## Extra time

Students have 30 hours of formal lessons each week, five more than is typical. This helps them progress rapidly and gives teachers more time to understand every student's needs. Extending our school day, providing additional learning opportunities, a broad extra-curricular offer and taking home learning seriously provides time and support for students to truly thrive.

## Extra special teachers

We are staffed to keep class sizes small. We have well qualified, specialist teachers in all subject areas, backed by very able support staff so that all students are challenged to do well and feel safe and supported.

## Extra commitment

Students, parents and teachers each sign our home-school agreement, demonstrating our shared commitment to working together so that each child succeeds.

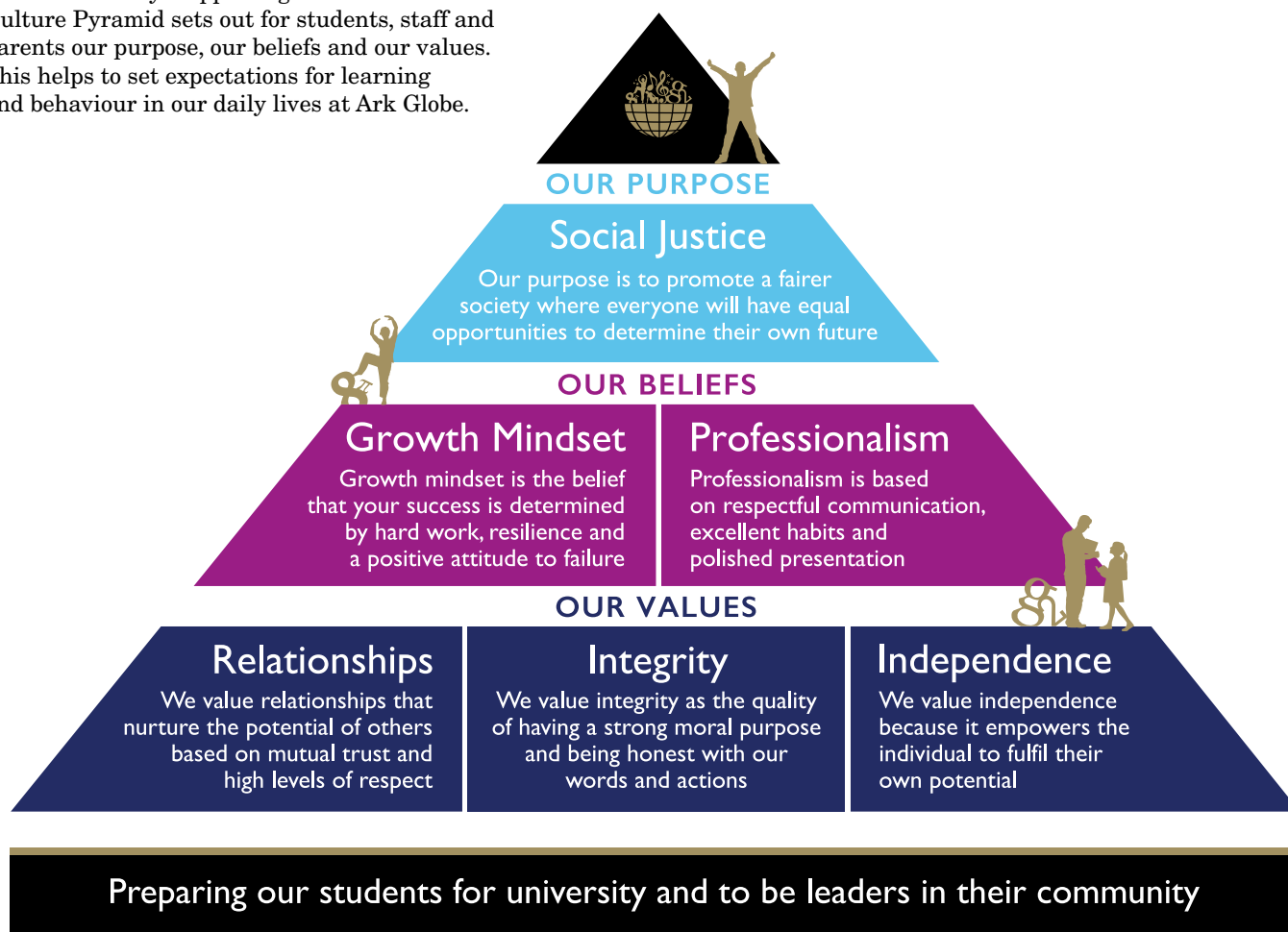


With the right  
teaching and  
support every  
child can realise  
their potential.

# Our Culture Pyramid

## Our mission

Our mission at Ark Globe Academy is to prepare our students for university and to be leaders in their community. Supporting this mission our Culture Pyramid sets out for students, staff and parents our purpose, our beliefs and our values. This helps to set expectations for learning and behaviour in our daily lives at Ark Globe.





# Caring and supportive

## An all-through education based on strong relationships

With classes from Reception to Sixth Form, our students can remain in the academy throughout their school career, building strong friendships and easing the sometimes daunting transition to secondary school.

Our small school structure ensures that we know every student, they each know their teachers and learning leaders well and that their needs are fully supported, both academically and pastorally. Our extended learning family time at the end of the school day also equips our students with an enhanced understanding of how they can improve as learners, and to develop their confidence about social and cultural issues and opportunities. Our five small schools are:

- A Reception and primary section, Ark Globe Primary Academy (4–11 years)
- Two separate small schools for students of 11–14 years old (Elbrus and McKinley)
- A school for 14–16 year olds (Kilimanjaro)
- Sixth Form, for 16–18 year olds (Everest)

Each small school has its own Head of School. This enables staff and students to develop strong relationships that help to maintain a culture of excellent behaviour and develop a strong sense of community.

## Starting secondary school

We run a series of events in the run up to September designed to help the transition from Year 6 to 7. From taster days to summer school, we aim to ensure that our new Year 7 have lots of opportunities to make friends, see the academy and meet their new teachers ahead of starting here.

“The school’s work to keep pupils safe and secure is outstanding”.

Ofsted



# Developing independent learners

## Our curriculum

Our curriculum has been designed to not only enable students to access the best universities but also to provide them with the skills needed to become leaders in their community. Our aim is to create independent young men and women who have the knowledge, skills and motivation to make a difference to the world around them.

The curriculum focuses on depth before breadth and follows a mastery approach where the key knowledge and the conceptual understanding required for a subject is developed across the key stages. There is a specific focus on literacy and numeracy with extra support provided where necessary to ensure all students progress.

We believe that all students have the ability to excel and consciously teach them to challenge and push themselves through embedding a growth mindset into the curriculum. This means that students are encouraged to see attainment not as something that is fixed but as something that develops with hard work and perseverance.

We have a three-year Key Stage 3, with students choosing their GCSE/BTEC options in Year 9. At Key Stage 4 we want as many pupils as possible to follow the English Baccalaureate as this will provide them with more choices post-16. The English Baccalaureate requires students to take GCSEs in English, maths, science, history or geography and a foreign language.

The curriculum has been designed to give students access to the best opportunities after Ark Globe, including entrance into a Russell Group university and the top professions, with the ultimate goal being that they become leaders in their community.





## Measuring progress

Throughout the year we invite parents to Student Performance Appraisal Days. Such evenings inform parents about their child's effort towards their studies, their level of professionalism and their academic progress. At the meeting students are able to set targets for future learning and it also provides an opportunity for us to celebrate their success.

## Our specialist subjects

At Ark Globe, we specialise in mathematics and the performing arts.

The mathematics department adopts a 'Mathematics Mastery' approach to teaching and learning. This is an innovative mathematics programme based on international best practice and gives students opportunities to gain a deeper understanding of key topics. In addition to the classroom curriculum, extra-curricular opportunities in mathematics are also available. Our students participate in the Ark Schools and UK Mathematics Trust individual and team maths challenges.

There are also many opportunities provided by the performing arts faculty. Every student gets involved in our music and arts programmes and many take part in our school shows, in the Ark Schools Shakespeare Festival and the Ark Music Festival. Students also take part in residential choir and orchestra weekends. We make use of our links with outside providers and hold the Arts Council ARTSMARK Gold Award for Excellence in Arts Education.



“What the teachers do is reach out to every student, connecting with them so easily.”

Azmarea, Year 13



“My teachers have been my biggest support, when I didn’t believe in myself, they genuinely believed in me and pushed me, regardless of how I felt.”

**Humayra, Ark Globe Alumni received 3 A\*s in 2022 and will study International Relations at King’s College London**



# Supporting every child

## Able and Talented

We are committed to providing a curriculum that meets the needs of every one of our students. There are Able and Talented children in every year group and our lessons, extra-curricular programme and enrichment opportunities stretch and challenge students to ensure they reach their full potential. For example, Ark Globe has won London Championships in a variety of sports and had numerous athletes compete in the National Athletic Finals.

If your child arrives at the academy with high prior attainment, your child's performance will be tracked closely by senior leaders. They will check on their progress regularly to ensure that they access extra-curricular opportunities and receive advice and guidance so that they are ready for the top universities. Your child will be provided with appropriate, challenging feedback and offered the opportunity to work at higher levels within their lessons.

If your child has a particular interest or talent in a certain subject, they can access a rich and wide range of clubs and activities to develop their passion and skills. From athletics to debating, we are committed to ensuring children pursue their interests beyond the classroom.

## Special Educational Needs and Disability (SEND)

We place great importance on ensuring that students with special educational needs are identified, properly assessed and well supported, following best practice. SEND provision mapping provides tailored support for each student. Support may be given in class, in a small group or through withdrawal classes.

Each small school works closely with the special educational needs coordinator and the inclusion team to ensure excellent provision for children with SEND, EAL or Able and Talented.

## English as an Additional Language

Students for whom English is an additional language benefit from our emphasis on depth before breadth in the core curriculum, getting extra support until they reach expected standards in English. Careful assessment and a combination of small induction classes and one-to-one teaching ensure that all students have full access to the academy's learning opportunities.

“Leaders have high aspirations for every student”

Ofsted



“I definitely recommend Ark Globe. I came here in Year 7 and am very happy to stay all the way to the Sixth Form. It is like a home to me.”

Shameika, now studying Biochemistry at the University of Cambridge



# Enrichment

We believe that learning that goes far beyond the classroom is essential in giving all our students the opportunity to experience new and inspiring activities, develop their passion and talents and help them to become independent thinkers.

Our extensive extended school programme offers a very wide range of after school and lunchtime activities. These include football, basketball, table tennis, choir, music lessons, debating, art, film, science and many more! These extremely popular sessions welcome everyone and take place in our specialist facilities including our state-of-the-art 3G pitch, container gym, long jump pit, new running track, sound recording studio and music rooms, leading edge ICT suites and our showcase 400 capacity auditorium.

We also make the most of being so close to central London by experiencing the best theatre and museums. Our students visit top universities, take part in residential trips and work with business and enterprise to develop essential skills for the future. We invite inspiring speakers to the academy to meet with our young people, past guests have included Barack Obama, former Prime Minister David Cameron, Mayor of London Sadiq Khan, world-class athletes Colin Jackson and Donovan Bailey and leading actors from the West End.

Being part of the Ark Network of schools also brings fantastic opportunities. Each year our students take part in debates and competitions, Ark Schools' music programme of choirs and ensembles, culture trips and adventures exploring the wilderness. We also take part in many Southwark and London schools' events, and some of our students have travelled to Washington DC and San Francisco as part of our Globe Poets group.

We are proud to be at the heart of our community and work closely with local organisations to both develop our students' leadership skills and benefit our neighbours. Our students run successful fundraising events — an annual charity market in Bermondsey and soup and bread sale in Borough Market. Every year they make beautiful murals, give concerts for the local community and volunteer at London Marathon Events. Our students have a whole enrichment day dedicated to volunteering in local organisations. We also invite the whole community to events such as our Summer Fair and end of term productions to celebrate our students' achievements and our local area together.







# Admissions

Ark Globe Academy is a non-selective, all-through school with no religious affiliations and serves children of all abilities. The primary school has places for 60 pupils each year in two classes. The secondary school has a Pupil Admission Number of 180 pupils in Year 7.

Ark Globe Primary Academy children transfer automatically to Ark Globe Academy Secondary once they have completed our 'Ark Globe Academy Secondary Transfer' form and therefore do not need to use Southwark Council's Common Application Form (CAF) to secure their place.

Applications for admissions from children who do not attend Ark Globe Primary Academy must be made on Southwark Council's Common Application Form (CAF).

When we admit pupils, we prioritise children with statements of special educational needs. Then, if our academy is oversubscribed, we offer places to children in the following order of priority:

- children who are in public care.
- children of a staff member who fills a post for which there is a demonstrable skill shortage as approved by Ark Schools. (This priority is limited to no more than one place in each form of entry in any year).
- children who have a sibling who already attends the school and who will continue to do so on the date of admission (for this purpose "sibling" is a whole, half or step-brother or step-sister or an adopted child resident at the same address).
- children of staff in the school may also receive priority where the parent has been employed in the academy for two or more years at the time of the application for admission (that is the year before admission). Priority is limited to no more than one place for each form of entry in any year.

- children who live closest to the school using a straight line distance from the main entrance of the academy to the main entrance to the child's home.

The school keeps a waiting list to fill any casual vacancies occurring if students leave during the academic year or withdraw from a place that has been offered.

## Appeals

Parents/Carers/Legal Guardians who are not offered a place for their child are entitled to appeal to an independent committee under the provisions of the School Standards and Framework Act, 1998. Parents/Carers/Legal Guardians wishing to appeal should complete an appeals form, available from the school office or from the Ark Admissions Team, Ark Schools, The Yellow Building, 1 Nicholas Road, London W11 4AN.

For further information on this, please contact the Admissions Coordinator at the academy.





# The Ark Network

Ark Globe Academy is part of Ark, a charity transforming lives through education. Ark has a network of 39 schools across the UK in London, Birmingham, Hastings and Portsmouth. Each school has its own unique character and ethos but are all united in the same mission — to ensure that every child, regardless of their background, has access to a great education and real choices in life.

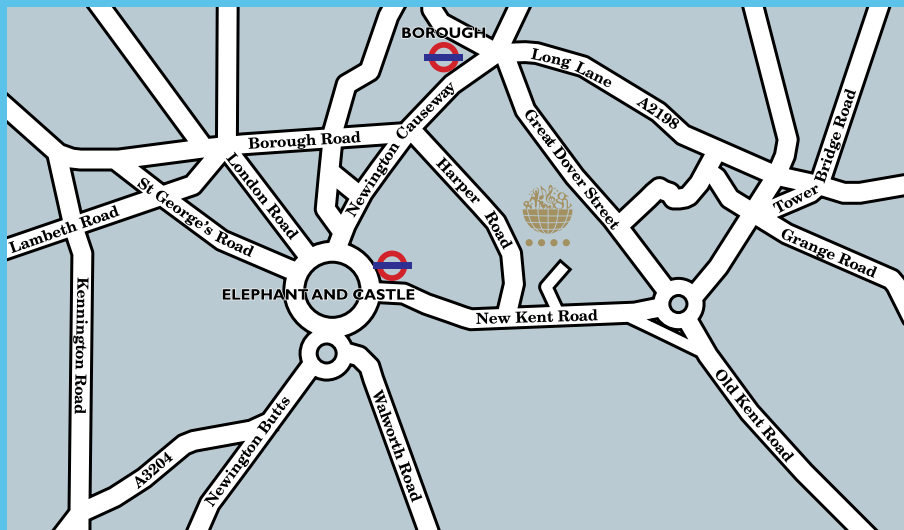
Through high expectations and a strong focus on teaching and learning, Ark schools have achieved some of the best results in the country, but they are about more than just academic excellence. Ark schools want their young people to develop far beyond the classroom so provide a whole host of exciting extra-curricular activities and opportunities. Highlights include debates and competitions, Ark's music programme of choirs and ensembles, cultural trips and adventures exploring the wilderness. Students take part in work experience with some of the UK's biggest companies and summer schools at top universities.

Ark is dedicated to improving education systems across the globe, not just in our own schools. In partnership with others, Ark creates, incubates and launches education-focused ventures in the UK and internationally.



“Doing music at school is a time for you to express how you feel. It helps me to feel happy and joyous. I loved performing at Ark Music Festival because we got the chance to show the people who were watching how hard we worked.”

Chanelle, Year 11



# Ark Globe Academy

## Executive Principal:

Mr Matt Jones OBE

## Ark Globe Academy

Harper Road

London SE1 6AF

☎ +44 (0)20 7407 6877

✉ [info@arkglobe.org](mailto:info@arkglobe.org)

🌐 [arkglobe.org](http://arkglobe.org)

🐦 @ARKGlobeAcademy

📘 ARK Globe Academy



Ark Globe  
Academy

Sixth Form



Preparing our students for university and to be leaders in their community





Ranked in the  
**top 1%**  
of providers  
nationally

**99%**  
of students  
received a  
university  
offer

**98%**  
of grades were  
A\*–C in 2022

# How to apply

To apply for the Ark Globe Academy Sixth Form please visit **[www.arkglobe.org](http://www.arkglobe.org)** and complete the online application form.

*Your future  
starts here*



# Message from the Executive Principal

**It gives me great pleasure as Executive Principal  
to introduce Ark Globe Academy Sixth Form to you.**

At Ark Globe Academy we have the highest aspirations for all our students to ensure they are prepared for university and inspired to be leaders in their community. Our Sixth Form is significant in ensuring we achieve our mission. We offer our students a first class education based on high quality teaching and experiences outside of the classroom.

As Executive Principal I am privileged to work with an amazing group of adults and children who are striving together to ensure every child has the opportunity to reach their full potential and pursue the career of their choice. Our Sixth Form is a happy environment and we pride ourselves on the relationships our staff have with our students, caring for them throughout their further education. We also work closely with families to ensure that all our students are committed to learning and develop the character necessary to take advantage of all the opportunities we provide.

Our Sixth Form is ranked in the top 1% of providers nationally and is currently the top local provider for A Level and BTEC studies. Our academic success is matched by the wide range of enrichment activities offered here at Ark Globe Academy including Enrichment Days, Networking Evening, Bursary Programme, summer schools, and more.

Almost all of our Year 13 students received an offer from a university. 72% of students have received an offer from a top third university or top third course; this is more than three times the national rate. In addition, each year we have a number of successful applications to Oxford and Cambridge universities.

We very much welcome visits to the Sixth Form and I strongly encourage you to arrange a visit so you can experience the richness of Ark Globe Academy Sixth Form first-hand.

**Matt Jones OBE  
Executive Principal**

# Start something big

Welcome to Ark Globe Sixth Form, where pursuing social justice is at the very heart of who we are and what we do.

Preparing students for university and leadership in the community is a bold mission and one we take very seriously in Sixth Form. We believe that the young people in our community deserve a place in the top universities and apprenticeships of this country. Our destinations speak for themselves, 99% of our students received a university offer, 72% of our students obtained a place in a top third university in 2022. So how do we do it?

*We are inspirational* — Our young people benefit from outstanding teaching and inspiring teachers, coaches and mentors who push our students to go beyond the curriculum.

*We are aspirational* — Our young people are given access to opportunities, experiences, and networks with those at the very top of their professions. Our students are encouraged to go for the best Universities and high level apprenticeships.

*We have high expectations* — Our young people recognise that when the tide rises all the boats go up. The Globe Culture pyramid values are not something simply said, but they are embodied in each member of the community to ensure that no one is left behind. We expect the best so only the best can be given.

We are a successful and encouraging place to study for the right student with the right ambition and intention. If you would like to join this movement then register your interest and join us in 2023.

We look forward to your application and to meeting you at interview.

**Rachael Fernandes**  
**Assistant Principal**  
**Head of Sixth Form**

*In 2022 72% of Year 13 Ark Globe leavers progressed on to a top third university.*



**2022  
Results**



*ALPS score of 1  
(Top 1% nationally)*



*92% of students achieved  
3 x A\*-C grades or equivalent*



*76% of grades were A\*-B  
(national average is 62%)*





### ***Best of both worlds***

*You will benefit from both the individual support provided by a smaller school sixth form, and the wider choice of courses and fantastic enrichment options offered.*



# Your route to university and career success

## **A level pathway**

We focus on offering the core academic subjects at A level that we know are most valued by good universities, and that allow you to keep your progression options as open as possible. If you have met the entry criteria below at GCSE, you can choose from 15 A level courses (see Course Guide pp. 13–21). You will receive guidance at interview and during enrolment about the best subject combinations for different degree courses and careers. Most students will study three linear A levels; some will take a fourth subject or the Extended Project Qualification, depending on GCSE results.

### **Entry criteria**

You will need to achieve an average point score at GCSE of at least 5.5, including at least 5 in English and Mathematics, and also meet the individual entry criteria for specific subjects.

## **Professional Pathways**

In addition to A level courses, we offer the Professional Pathway in Business and Sport (see Course Guide pp. 22–23). These programmes are also aimed at preparing students to apply for selective universities, or for progression directly into employment through school leaver programmes or degree apprenticeships. We receive support from the Ark network for Professional Pathways, including visits to businesses, access to work experience opportunities, a bespoke work-readiness curriculum, and career mentoring from both teachers and employers. You will work with corporate partners such as Grant Thornton, Lloyds Banking Group and Bloomberg, and university partners including King's College London and Imperial.

### **Entry criteria**

You will need to achieve an average point score at GCSE of at least 4, including at least 4 in English and Mathematics.

For more information on individual A level courses and Professional Pathway, see the **Course Guide** section of this prospectus.

“

I am really happy and proud of myself. I would like to thank all of the staff at Ark Globe for the support they have given me over the years. My time at Globe has been really valuable and I have gained lots of skills I can use at the university.”

**Kirsten Martey-Botchway**

*Ark Globe Sixth Form alumna*

*A\* in Chemistry,*

*A\* in Physics,*

*A in Maths*

*Now at University of Cambridge  
studying Medicine*

A\* A\* A

## Key benefits to students

- 1 **Wider range of A level courses and Professional Pathways**, including all Russell Group facilitating subjects.
- 2 **Experienced and well-qualified** A level teachers.
- 3 **Massive range of enrichment opportunities** to support your progression to university or directly into a career.
- 4 **Opportunity to meet other ambitious students** from Ark's south London schools and beyond.



**Ark University  
Bursary Programme**  
**Awards from  
£3,000 over  
one year to £22,500  
over three years**

# My experience

My  
sixth form  
journey



## Safiya Behanzin

*Ark Globe Sixth Form 2021 Leaver  
BBB — Maths, Chemistry and Physics  
Currently a degree apprentice at Bank  
of America as Digital and Technology  
Solutions Professional*

“Ark Globe Sixth Form is a true community, constantly supporting one another and pushing each other to reach their goals.

As an external student I felt welcomed with a huge bundle of support from everyone especially the sixth form staff, they hold you to a high standard and know you are more than capable of upholding it. Building that relationship within the sixth form team I always had someone I could comfortably reach out to if I needed help.

Throughout the academic year it can get stressful but there are a number of things that the sixth form arrange to get involved in and have fun.”

“The sixth form staff hold you to a high standard and know you are more than capable of upholding it.”



## Di'Mario Downer

*Ark Globe 2022 Leaver  
A\*A\*A\* – English Literature,  
Geography and Sociology.  
Studying Theology, Religion,  
and Philosophy of Religion at the  
University of Cambridge*

“I joined Ark Globe Academy in 2020 and studied from Year 12 to 13. Initially, as an external student, I was apprehensive about joining an entirely new community. In retrospect, my nerves were understandable as the transition between secondary school and sixth form can be daunting. However, as my first term progressed, the strong sense of community at Globe ensured I didn't feel alienated because of my academic journey. With students openly displaying the integrity and emphasis on relationships found within the culture pyramid, I quickly came to feel at ease and a sense of belonging within Globe.

Also, having the privilege to lead as Head Boy gave me the opportunity to contribute to the community I had joined. By leading across the entire school, I was able to see that the perseverance and selflessness among the members of staff I had met was not exclusive to the sixth form alone. I have no doubts about the role support among students and teachers has played in creating a unique learning environment at Globe.”





# Our commitment to you



**We are committed to providing you with the highest quality sixth form experience. In order to do this we will:**

- ...ensure you feel cared for, included and valued as an individual.
- ...do all that we can to help you reach a good university or enter a professional career of your choice.
- ...treat you with honesty, fairness and respect — as a young adult in a professional workplace.



**Teaching and learning is at the heart of what we do, and we will:**

- ...provide a consistently high quality learning experience, with lessons that engage and challenge.
- ...provide personalised support through teachers and your Learning Family Leader to support your progress.
- ...help you to organise your work effectively so that you meet our expected standards.



**Keeping track of your progress is fundamental — so you will:**

- ...meet regularly with your teachers and Learning Family Leader throughout the year to monitor your progress.
- ...receive progress reports each term comparing your performance against your target grades.
- ...attend Student Performance Appraisal days with your parent/carer to review your progress.



**We are committed to shared academy values:**





*Your Learning Family Leader will play a crucial part in guiding and supporting you during your time in sixth form. They are responsible for monitoring your academic progress, and working with the sixth form team and your teachers to help you address any issues. Learning Family Leaders are also responsible for ensuring you progress to an **excellent destination at the end of sixth form** — whether a good university or directly into the career of your choice.*

# Your commitment to us



## Professional conduct

Our expectations of our students are extremely high. We aim to help you maximise your academic achievement and to be prepared for a professional career, either as a university graduate or direct from sixth form. We therefore expect all students to conduct themselves accordingly — as young adults in a professional workplace. This is crucial to maintaining good working relationships with staff and other students, and to ensuring that we can all be held accountable for behaving with honesty, fairness and respect towards one another.



## Professional dress code

We ask you to dress for a formal, professional workplace, consistent with the ethos of Ark sixth form schools. This helps reinforce our expectations of conduct and work ethic, while underpinning the culture of equality and respect across our schools. For male students, this means wearing a suit, shirt and tie. For female students, a blazer or smart cardigan. Smart skirts or trousers with a tailored jacket can also be worn. Jeans or other denim, trainers and plimsolls are not appropriate. If you have any questions about dress code, just ask one of the sixth form team.



## Professional work ethic

We encourage our students to adopt a professional attitude to managing their time and workload in sixth form. You will have several lessons a week that are designated study periods, when you are expected to be on site and studying in one of our purpose-built sixth form spaces. We will make sure that you receive enough work and support from your teachers to make good use of your time, and you will also have a planner to help you organise your work. The most important thing is your personal commitment to making the most of this time outside of lessons. This is vital in ensuring you make the strong progress required to achieve well at the end of sixth form.

*A shared  
commitment  
to success*

# Outstanding learning facilities

Based at Ark Globe Sixth Form with dedicated sixth form facilities to allow students to study, eat and socialise on site. Study areas are supervised by teaching staff to ensure you have access to support when you need it, and students use their study periods to stay on top of academic work while also focusing on personal organisation, time management and research skills.





*My  
sixth form  
journey*

“My journey through Ark Globe was not the longest as I joined in Year 11, but I would not have made such progress if I went anywhere else. The members of staff at Globe are never hesitant to invest their efforts and go above and beyond for their students. Being welcomed into a strong and embracing community by my peers and teachers made the experience much smoother and allowed me to build relationships that I will hold onto and cherish as I advance through my journey ahead. I also received the Ark Bursary which will support me through university and open doors to more opportunities that I would not have been able to access without it.”

**Quincy Ogueri**

*Ark Globe Academy 2021 Leaver  
AAAA – Maths, Further Maths,  
Physics and Computer Science  
Currently studying Computer Science  
with a year in industry at  
University of Liverpool*



*Skills  
workshops*

*Work  
experience*

*Financial  
support*

## **Ark University Bursary Programme**

Students progressing to university who have demonstrated an excellent attitude to learning in sixth form are eligible to apply for Ark university bursaries. These range from £3,000 for the first year only to £22,500 over a three-year degree programme — in all cases,

bursaries help reduce the cost of university for successful applicants. We continue to support our students during university by providing bursaries, work experience, skills workshops and other unique opportunities as part of the Ark alumni network.



*Challenge  
your thinking  
with industry  
speakers*

*Expand your  
knowledge by  
visiting top  
universities*



# Enrichment — super-curricular and extra-curricular

There is a fantastic range of activities, events and programmes to enrich your sixth form experience. Our aim is to provide you with outstanding opportunities beyond your core programme of study which will allow you to grow and develop as a person. At the same time, we will support you to achieve success in your next steps towards a good university or the career of your choice.



*Network with  
experienced  
business  
people*



## The opportunities we offer fall into three main categories:

### Academic enrichment

Super-curricular activities designed to broaden and deepen your understanding of the subjects you study, while also giving you the opportunity to engage with subjects outside of your own programme of study. All teaching departments organise at least one academic visit each year, and at least one speaker per term. There are also monthly masterclasses on a range of academic topics relevant to your sixth form studies, and targeted academic tutoring from highly qualified professionals. Through organisations such as the Access Project students are assigned academic tutors including judges, doctors, senior civil servants, engineers and psychologists. In addition to this we also offer electives which students can choose every Wednesday afternoon in activities such as Driving Theory lessons, First Aid, Creative Writing, Health and Fitness Awards, Duke of Edinburgh and the opportunity to learn another language such as Chinese or Arabic.

### Access and opportunities

Additional visits, speakers and activities organised by the sixth form teams are designed to stimulate your intellectual curiosity and promote learning outside of the formal curriculum. This allows you to develop further your understanding and appreciation of culture, politics and society, while also expanding your knowledge of university

and professional careers. Examples include networking events with corporate partners like Bloomberg, visits to top universities and regular external speakers.

We support you to attend leading universities, and access top professions such as law, medicine, engineering or teaching. Working in a collaboration with top universities including Oxford, Sheffield, York, Exeter, Newcastle, SOAS and King's College London, we offer the Elephant Access programme to our students.



Elephant Access provides a range of activities and experiences to support students' aspirations, attainment and applications to top universities, and ensure our most academically capable students access top third universities at the end of their time with us.

### Habits, skills and mindset

We are committed to helping you develop the habits, skills and mindset that will help you succeed in Higher Education and your career of choice. You will do this through tutorials, workshops and visits specifically aimed at preparing you for university and the world of work. Examples include study skills workshops, supported study periods in Year 12 and mentoring.





*Up to £7,500 per  
year to reduce the  
cost of university*

# Destinations: pathways and guidance

Our aim is to help all our students progress to a good university or directly into their career of choice. In addition to supporting you to make strong academic progress, and providing wider opportunities for your academic and personal development, we ensure you receive all the advice and guidance you need about your next step. Your choice of destination is obviously crucial, and it is our responsibility to make sure you are as well-informed as possible. If you plan to continue to Higher Education, the choice of university and course is rarely straightforward but absolutely vital — you need to find the right fit in terms of your career ambitions, your qualifications and your personal/family circumstances.

You may decide you want to start work straight away after school — there are many excellent options with large employers to do this, and through our Professional Pathways programme we have built up strong relationships to support student applications with firms such as Lloyds Banking Group, the Civil Service and CapGemini. We support students to apply to higher apprenticeships or degree level apprenticeships of their choice.

In addition, through our Ark Globe Bursaries we offer specific support to help students access careers in law, medicine and high finance.

# Course Guide



14

**Biology**  
**Chemistry**  
**Computer Science**  
**Economics**



16

**English Literature**  
**French**  
**Geography**  
**Government  
and Politics**

18

**History**  
**Mathematics**  
**Media Studies**  
**Physics**



20

**Psychology**  
**Sociology**  
**Spanish**



22

**Professional  
Pathways**



## Biology



### What is Biology?

Biology is the study of living organisms. Biologists study every aspect of life, from the intricate workings of individual cells to the effects of humans and other organisms on the Earth's atmosphere.

### Why study this course?

Biology is a subject where you will constantly learn interesting things about the workings of the human body and about the wider world around you. As well as being a fascinating subject, Biology is brilliant if you want to develop your skills and make yourself an attractive candidate for universities and employers. Studying Biology will develop your mathematical, problem-solving and literacy skills, with a significant element of laboratory and practical work throughout the two-year course.

### How is the course assessed?

Examinations at the end of the two-year course.

### Who is the course suitable for?

Students who have curious minds, a genuine interest in studying living things and who want to get a hands-on experience of science.

### Progression options

A level Biology students are in a position to progress to science-related degrees, including competitive fields such as Medicine, Biomedical Science or Dentistry. The analytical skills that are required for Biology (and any science A level) are highly valued by most employers and universities, and can lead to a wide range of study and career options.

### Examining board

AQA



## Chemistry



### What is Chemistry?

Chemistry is the study of matter, its properties, and how and why substances combine or separate to form other substances. It also involves the study of how these substances interact with energy.

### Why study this course?

A level Chemistry is challenging but hugely rewarding, requiring you to extend and deepen the knowledge and understanding you gained at GCSE. You will develop your skills in problem-solving, analysis and data-handling, while having the opportunity to develop your practical skills through regular laboratory work. These transferable skills make science graduates highly employable in a range of professions.

### How is the course assessed?

Examinations at the end of the two-year course.

### Who is the course suitable for?

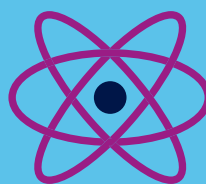
Students with strong numeracy skills, a real interest in science and who desire to develop greater understanding of how physical sciences shape the world around us.

### Progression options

Chemistry is either required or strongly recommended for many related degree courses such as Medicine, Pharmacy, Dentistry, Biomedical Science and Veterinary Medicine. In more general terms, Chemistry is a widely respected subject that will support progression to most professional careers.

### Examining board

AQA





## Computer Science



### What is Computer Science?

Computer Science is an exciting subject for technically-minded students that provides the opportunity to develop an in-depth understanding of how computer systems and software are developed. You will have opportunities to analyse real world problems and devise logical technological solutions to them.

### Why study this course?

A level Computer Science allows you to develop an in-depth understanding of computer science theory, and build your practical skills in the use of both software and programming languages. The course will help prepare you for related university study in the fields of Computing, ICT or Business Management/Information Systems. Graduates in these fields are highly sought after by employers in all sectors due to their transferable technical skills.

### How is the course assessed?

Coursework (20%) and examinations at the end of the two-year course.

### Who is the course suitable for?

Students who enjoy problem-solving and using coding to complete complex challenges — anyone who is considering becoming a programmer or a software developer as a career.

### Progression options

This course can lead to a wide range of course options in Higher Education. Good universities typically have several courses within Computing/ICT/Information Systems including more specific courses such as Artificial Intelligence, Web Design, Software Development and Networking. All of these courses are excellent preparation for graduate employment or further academic research.

### Examining board

OCR



## Economics



### What is Economics?

Economics is the study of human choices and how society uses its resources. In a world where there is scarcity of land, labour, raw materials, capital and enterprise, Economics helps people make the right choices by showing them the most efficient way to use these scarce resources in achieving their goals.

### Why study this course?

Economics is highly respected by universities and provides you with knowledge and skills necessary to succeed in a variety of professional careers. These include quantitative and qualitative data analysis, formal written communication and understanding of a wide range of real world issues affecting society, government and business.

### How is the course assessed?

Examinations at the end of the two-year course.

### Who is the course suitable for?

Students with a strong interest in current affairs (especially politics, government and business) and who enjoy applying their knowledge and understanding to real world scenarios.

### Progression options

A level Economics can lead to a variety of degree courses at university, typically in fields such as Business/Management/Accountancy/ Finance and Social Sciences. Economics is often paired with another related subject such as Politics or Management to make up a university degree. Some Economics degrees also require Maths A level. It is widely respected by universities and employers, and can lead to careers in banking and finance, business consulting, accountancy, law, journalism, civil service, business and management, or education. Economics graduates are highly sought after in the labour market.

### Examining board

Edexcel



## English Literature



### What is English Literature?

English Literature is the study of the work of a variety of great writers. The study of literature should bring you both knowledge and pleasure: you will study a wide range of novels, plays, poems and other literary forms in order to explore the concerns of the people who wrote them, the methods that they use to shape the responses of their readers and the conclusions that we can draw from our reading of them.

### Why study this course?

Studying a range of literature will broaden your ideas, develop the skills involved in debate and discussion, and encourage the discipline of detailed textual analysis. It is a highly regarded, useful foundation for a range of university subjects.

### How is the course assessed?

Coursework (20%) and examinations at the end of the two-year course.

### Who is the subject suitable for?

Students who love to read and to talk about books, and are willing to offer their opinions in lessons and to engage with those of others. In addition, students who are able to write clearly using appropriate literary terms, arguing fluently and analysing cogently.

### Progression options

English Literature is highly regarded by both universities and employers and will support your progression to a range of courses and careers. The skills of textual analysis and written communication are vital in most professional careers, and highly relevant in law, journalism, public relations and marketing.

### Examining board

Edexcel



## French



### What is French?

In French, you will study the language and culture of the French-speaking world. Focussing on France, you will delve into a rich society through its film and literature, and take a close look at its politics and history. You will become a fluent speaker of French, able to interact with real-life examples of French language materials and understand a new way of perceiving and interacting with the world.

### Why study this course?

Studying another culture through film and literature will broaden the way you see the world. It will open you to new ways of thinking, acting and being. Your study of grammar will increase your ability to engage in problem solving, methodical and logical work. It is highly regarded by universities and employers. It means that whatever you can do, you can do it with 235 million more people than if you only spoke English.

### How is the course assessed?

You will take three exams. You will take a speaking exam, an understanding (Listening and Reading) exam, and a production (Writing and Grammar) exam.

### Who is the subject suitable for?

Students who want to know about the world and the people in it. Students who have a passion for ideas, debate, philosophy, art, literature, language, grammar, linguistics, film, fashion, or food should all consider French.

### Progression options

French will be an additional skill in any situation, academically or professionally. International organisations such as the EU, UN, WTO and companies across the world have major hubs in France, Africa and Canada. Those who want to work in international development or international relations will see a major boost to their career prospects by studying French.

French is highly regarded by Top-third, Russell Group and Oxbridge Universities.

### Examining board

Edexcel

“”

## Geography



### What is Geography?

A level Geography involves the study of topical and important aspects of human society and our physical environment. You will develop an in-depth understanding of human topics like globalisation, migration and regeneration of urban areas, while physical topics include coasts, glaciation and tectonics. You will also have the opportunity to conduct independent research and data collection on a topic of your choice through the coursework element of the qualification.

### Why study this course?

Geography is an incredibly diverse and interesting subject that complements a range of different A levels, including History, Economics, Sociology and Science subjects. You will develop an excellent range of transferable skills, and be well prepared for Higher Education and career pathways, supported by your strong understanding of the world around us.

### How is the course assessed?

Coursework (20%) and examinations at the end of the two-year course.

### Who is the course suitable for?

Students with a strong interest in world events and current affairs (particularly related to human and physical geography) and who enjoy discussion, reading, research and essay writing.

### Progression options

Specific careers related to Geography include environmental management and consultancy, town planning, chartered surveying and project management. Geography graduates have an above average employment success rate due to the range of skills they develop including oral communication, delivering presentations, report writing, problem-solving, analysis, data interpretation and critical thinking.

### Examining board

AQA



## Government and Politics



### What is Government and Politics?

Studying Politics allows you to develop your understanding of government and society — how people, ideas and institutions interact and what the effect is.

### Why study this course?

It's a subject full of drama — you will study the rise and fall of leaders and political parties, and the power play between nations. You will examine the ideas of freedom, democracy and human rights.

### How is the course assessed?

Paper 1: UK Politics — 33.3% of A Level  
Paper 2: UK Government — 33.3% of A level  
Paper 3: Comparative Politics (USA Politics) — 33.3% of A level

### Who is the course suitable for?

Those interested in humanities subjects such as History, RE, Geography, English. Those who enjoy essay based subjects.

### Progression options

A Level Government and Politics and further related study can lead to a career in the civil service, diplomatic service, working as a researcher for a politician (both in the UK and overseas), a political journalist or a teacher. If you also have fluency in a foreign language you are well placed to get a job in an international organisation.

### Examining board

Edexcel



“  
I don't think that I would have a similar experience if I went to another school. I've had so many amazing opportunities at Ark Globe.

*Lauren,  
Ark Globe Sixth Form alumna,  
now at University  
of Cambridge*



## History



### What is History?

A level History is the study of a range of periods of British and International History. Debate and discussion of historical issues are central to the study of this course — you will have the chance to apply your knowledge and understanding by arguing the causes, consequences and significance of the key events studied.

### Why study this course?

History is a traditional academic subject that is highly regarded by top universities, both as a means to access a wide variety of more specialist courses and also as a subject in its own right. Studying History at A level will give you a broad understanding of current world affairs, while also helping you build key skills such as literacy, communication, analysis and critical thinking.

### How is the course assessed?

Coursework (20%) and examinations at the end of the two-year course.

### Who is the course suitable for?

Students who are interested in analysing the causes and impact of historical events, and who are open-minded to help them understand alternative viewpoints and the cultural norms that governed the thinking of people in the past.

### Progression options

History is a subject that provides excellent preparation for Higher Education, and also complements any other essay subject at A level. As a traditional academic subject, History is well regarded by universities and supports an application for many subjects, notably English, History, Law, Modern Languages and Politics.

### Examining board

Edexcel



## Mathematics



### What is Mathematics?

Mathematics A level builds on the topics studied on the Higher Specification GCSE course. Within Pure Mathematics you will be introduced to calculus techniques as well as extending your algebra skills. You will also study a variety of topics within Statistics, Mechanics and Decision Mathematics.

### Why study this course?

An A level in Mathematics shows logic, reasoning and a high level of numeracy, and serves to support many other A level courses. Furthermore, employers in all sectors highly value a candidate who can offer mathematical ability — research has shown those with a Mathematics A level earn more, on average, than those without. Studying A level Mathematics therefore offers you the opportunity to develop your knowledge, skills and employability.

### How is the course assessed?

Examinations at the end of the two-year course.

### Who is the course suitable for?

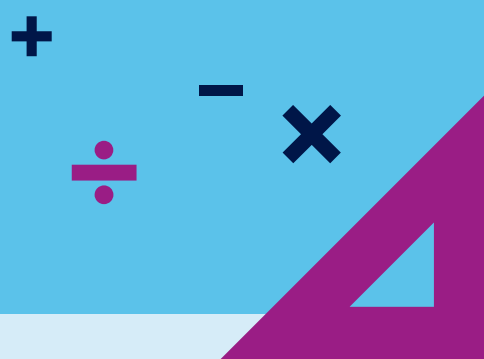
Students who have loved studying Mathematics during primary and secondary school, enjoy working hard and are motivated by the challenge of solving complex problems using exact methods.

### Progression options

Mathematics A level supports applications for most degree courses and almost all career pathways — from Medicine to Engineering, and Computer Programming to Finance and Accounting. It is well regarded by universities, and can therefore support most subject combinations at A level.

### Examining board

Edexcel



## Media Studies



### What is Media Studies?

Media Studies is a challenging, creative and engaging course that will increase your awareness of the ideologies behind media texts and allow you to question the impact of the media on the world around you. Media Studies has many things in common with English Literature — rather than studying plays, poems and novels, however, you will engage with a range of contemporary print, broadcast and electronic media.

### Why study this course?

Media Studies is a truly contemporary subject which is relevant to all of our lives. The media saturates everything that we do, and this is ever more relevant in the age of social media and 'fake news'. You will learn the tools needed to analyse and critique the media in all its forms, and engage in critical debate and analysis. Your coursework will allow you to develop a range of technical and creative skills using software like Adobe Photoshop and Premiere.

### How is the course assessed?

Coursework (50%) and examinations at the end of the two-year course.

### Who is the course suitable for?

Students who want to engage with modern media in all its forms, who have an interest in the technical and creative aspects of the media, and who are keen to pursue careers in graphic design, photography, video production or website design.

### Progression options

Media Studies can be a springboard for a range of career opportunities, either through Higher Education or directly into higher apprenticeships. The majority of top universities now offer a variety of excellent Media courses, and employers value the creative intelligence, social awareness and practical skills of Media graduates.

### Examining board

OCR



## Physics



### What is Physics?

Physics is defined as the study of matter, energy and the interaction between them. It is the science of how things move and why things behave in certain ways, and provides a fascinating insight into why our world is what it is. Physics is highly mathematical and uses formulae and logic to solve everyday problems, and also predict future events. Furthermore, it holds the answers to some fundamental questions about the history of the Earth, our solar system and the universe. Physics at A level involves practical work as well as plenty of theory — you will discover many new terms, formulae and mathematical methods to help you answer questions.

### Why study this course?

Are you curious about the mysterious sub-atomic particles that are the fundamental building blocks of life as we know it? Would you like to understand the work engineers do to create the biggest man-made structures? Are you motivated by the idea of applying your Mathematics skills to real world contexts? If so, Physics could be an excellent choice of subject for you at A level.

### How is the course assessed?

Examinations at the end of the two-year course.

### Who is the course suitable for?

Students who enjoy Mathematics and Physics at GCSE, enjoy seeing a real-world application of Mathematics, and who are motivated to study hard to come to grips with lots of new terminology and formulae.

### Progression options

A level Physics can lead to university degrees in Physics, Mathematics, Engineering and Medical Science, depending on the other subjects you have chosen. It shows a high level of numeracy, logic and reasoning skills, and a Physics-related degree can lead to many excellent career options in fields such as engineering, technology, manufacturing and financial markets.

### Examining board

AQA



## Psychology



### What is Psychology?

Fundamentally, Psychology is the study of human behaviour. By studying Psychology you will gain a fascinating scientific insight into how the human mind works to affect how we behave, and you will grapple with great questions about the interpretation of dreams, the use of offender profiling in criminal investigation and the causes of mental illnesses. You will develop understanding of classic psychological theories by applying them to real life contexts, as well as carrying out psychological investigations and writing reports based upon your findings. Lessons are designed to be engaging and interactive, with frequent opportunities for debate.

### Why study this course?

Psychology is a fascinating subject to study if you are interested in the world around you and want to find out more about the behaviour and decisions of individuals and groups. You will also develop a host of transferable life skills and a high level of self-awareness. As a result of the understanding you will develop of how people think, feel and behave, you will find that Psychology A level will help you progress in many professional careers.

### How is the course assessed?

Examinations at the end of the two-year course.

### Who is the course suitable for?

Students who want to find out about the human mind and understand how it governs human behaviour. It is also important to have an interest in society and social issues, and a motivation to read widely to broaden your knowledge and understanding.

### Progression options

Psychology can help your career either directly or indirectly. If you wish to become a psychologist, therapist or mental health worker, this A level is of direct value. Psychology graduates can also build careers in related sectors such as education, the police and social work, or in a range of commercial contexts. Psychology provides you with life skills that are transferable to any career.

### Examining board

AQA



## Sociology



### What is Sociology?

Sociology is the study of human society — how society has developed, how it is structured and how it works. You will look at culture and identity, social problems such as crime and poverty and the opportunities and challenges presented by globalisation. You can expect Sociology to shock and surprise you, as you begin to see the world around you in a new way, and to challenge many of your own assumptions and beliefs.

### Why study this course?

Sociology allows you to gain an understanding of the way society works, and therefore to gain a different and much fuller perspective on the world around you. For example, you will have the opportunity to tackle contentious debates like why the prison population contains more people from ethnic minority backgrounds, why some sections of society have become obsessed with celebrity, the social and economic reasons behind health inequality by region and social class in the UK, and the impact of new media on global popular culture.

### How is the course assessed?

Examinations at the end of the two-year course.

### Who is the course suitable for?

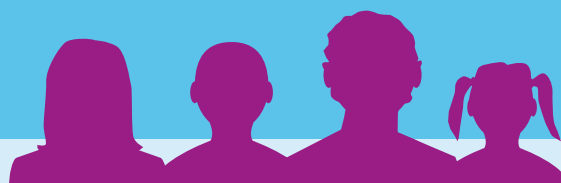
Students who have a strong interest in current affairs and the world around them, who enjoy asking and debating big questions about society, and who are ready to challenge their own thinking.

### Progression options

Many students go on to study related Social Science courses at university, and a background in Sociology is helpful in careers such as law, civil service, education, criminal justice system and social work. You will develop a strong skillset including written and oral communication, and the ability to analyse and evaluate data from a range of sources — useful in a wide range of professional contexts.

### Examining board

AQA





## Spanish



### What is Spanish?

In Spanish, you will study the language and culture of the Spanish-speaking world. Focusing on Spain and Latin America, you will delve into rich cultures through film and literature, and take a close look at the politics and history of these regions. You will become a fluent speaker of Spanish, able to interact with real-life examples of Spanish language materials and understand a new way of perceiving and interacting with the world.

### Why study this course?

Studying another culture through film and literature will broaden the way you see the world. It will open you to new ways of thinking, acting and being. Your study of grammar will increase your ability to engage in problem solving, methodical and logical work. It is highly regarded by universities and employers. It means that whatever you can do, you can do it with any of 559 million Spanish speakers across the globe.

### How is the course assessed?

You will take three exams. You will take a speaking exam, an understanding (Listening and Reading) exam, and a production (Writing and Grammar) exam.

### Who is the subject suitable for?

Students who want to know about the world and the people in it. Students who have a passion for ideas, debate, philosophy, art, literature, language, grammar, linguistics, film, fashion, or food should all consider Spanish.

### Progression options

Spanish will be an additional skill in any situation, academically or professionally. Companies across the world have major hubs in Spain and Latin America. Those who want to work in international development or international relations will see a major boost to their career prospects by studying Spanish. Spanish is highly regarded by Top-third, Russell Group and Oxbridge Universities.

### Examining board

Edexcel



*Meet other ambitious students*

*Support your progression and your future*

“Ark Globe Sixth Form staff are the most supporting staff ever. They always make the space for you to grow, sometimes if you feel down they pick you back up. The culture of relationships at Ark Globe is amazing. It means that the whole community and Sixth Form constantly push each other. When you don’t achieve your best, they make sure you know that this isn’t the end and there is so much space to grow.”

#### **Brenda Irabor**

*Ark Globe Sixth Form alumna  
A\* in History, A\* in EPQ, A in English Literature and A in Economics  
Now at UCL, studying History, Politics and Economics*

## Professional Pathways

### What is Professional Pathways?

For students who wish to access higher level study or employment through a route other than A level, Professional Pathways could be the route for you.

Professional Pathways is an innovative programme of study offered at sixth forms across the Ark network. It has been designed in close collaboration with partners from the commercial and public sector. Those on this pathway will study towards the BTEC Extended Diploma, worth three A levels, in a programme that integrates academic study with extensive work experience opportunities, work readiness and career mentoring programmes.



### Ambitious choices

#### Why study this programme?

- You will study a Level 3 qualification in Business that is equivalent to three A Levels, and holds the same number of UCAS points.
- You will work with employers to develop key skills: visiting their offices, meeting their employees, and accessing work experience opportunities.
- You will receive career mentoring to help you make a real and informed choice about what to do when you leave school. Your qualification will allow you to apply to top universities, competitive school leaver programmes, and apprenticeships with respected companies.
- You will attend termly conferences with students from across Ark, providing opportunities to build new networks with both peers and employers.

#### How is the course assessed?

The majority of the course is assessed through coursework assessments that are completed throughout the course. In addition, you will complete one controlled assessment and one exam at the end of each year. These will make up approximately 20% of your final grade.

#### Who is this programme suitable for?

Students who prefer practical learning and coursework over theoretical content and exams, as well as those who are keen to develop their employability skills and employer networks.

### Work experience



## Business

### What will I study?

You will develop practical skills and a theoretical understanding of the world of business. You will look in depth at finance, marketing, human resource management and e-business and will have opportunities to devise your own business plans and run your own business activities and events.

### Progression options

You can choose to progress to either Higher Education to study Business, Accounting and Finance, Business Management or to combine work and study through a higher/degree apprenticeship in Business or Finance.

## Sport

### What will I study?

If you love sport and wish to pursue a career in the sport and health sector then this Pathway is for you. This is a great course that provides you with different experiences in real sporting industries as well as giving you the knowledge and skill to develop and hone your sporting abilities.

### Progression options

This course can help you to progress to a range of careers including Sports Journalism, PE Teaching and Sports Coaching, Sports Event management, Nutrition, Physiotherapy and Sports Science.



“I am a graduate from Ark’s Business Professional Pathways Student Ambassador and was privileged to gain D\*D\*D\* and a B in A Level Sociology. The course provided me with public speaking practice and improved transferable skills such as leadership. I plan to utilise my qualifications and skills to further my opportunities at university and beyond. Globe Sixth Form has provided me with a supportive learning environment that has encouraged me to become a more well-rounded and conscientious individual.”

**Jevantae Freckleton**  
*Ark Globe Leaver*  
*D\*D\*D\* – Business and B – Sociology.*  
*Studying International Business*  
*at the University of Sussex*

University

Career

A bright  
future





“I don’t think I could have got through medical school applications, interviews and examinations without Globe — they knew me as a student and understood me as a young person.”

*My  
sixth form  
journey*

# My experience

## Ofure Toweh

*Ark Globe Sixth Form 2019 Leaver*

*A\*BB – Economics, Biology, Chemistry*

*Currently studying Medicine at University of Southampton*

“I can’t remember exactly when I decided I wanted to become a doctor, but I had no idea how hard the journey would be. Attending Ark Globe Academy was definitely a huge step in the right direction. It’s easy to become discouraged when pursuing a career in medicine. Globe gave me the confidence to believe I could achieve whatever I put my mind to, they taught me the power of having a growth mindset.

Enrolling in Ark Globe Sixth Form fortified my confidence in my academic ability. I studied biology, chemistry and economics and was given a safe space to explore and tackle each subject; wanting help in my studies was never a problem and I always felt accommodated by my teachers.

I had the honour of being president of the student union at Sixth Form which gave me real responsibilities within my community and a good insight into what being a part of student union at university might be like. It was an amazing experience and I learnt so much about leadership, team work and communication. I will use those skills in every walk of life.

The support I received from my teachers and all the Sixth Form staff was incredible. Post 16 education can be difficult because you go through so many emotions at once. I was fortunate to have such experienced and caring adults around me who were there until I reached my destination.

I don’t think I could have got through medical school applications, interviews and examinations without Globe — they knew me as a student and understood me as a young person. Feeling understood was important for me and I appreciated it so much. The professional and individual I am today is a testament to my 7 years at Globe.

I had the chance to apply for a bursary and was successful. Even after leaving Ark Globe I will be supported through that bursary and the alumni network that comes with attending an Ark school like Globe. I’ve attended countless enrichment trips and even had the chance to hike through the Rocky Mountains in Canada at the end of Year 11. It was an unforgettable trip where I made lifelong memories and friendships. I can proudly say after leaving I felt prepared for university and most importantly prepared to be a leader in my community.”



# Celebrating our amazing community

We are a diverse community where everyone matters and we are proud of the many projects we have undertaken to amplify our students' voices. Here is an example of the fantastic artwork created by our students through a project titled 'We are Globe'. The artwork is made of Ark Globe Primary, Secondary and Sixth Form students' self-portraits and their own words defining who we are, as a community.

To create this, our students and staff worked alongside professional artists, designers, producers, health and safety advisors, and a large team of site installers. It is a 35-metre wide, impactful artwork placed in our playground, on Harper Road and across our buildings. Uplifting and uniting, it reminds us of what an amazing community we are, at the same time showing off the great talent we have amongst our students.

We'd like to thank everyone who participated in 'We are Globe' project from December 2019 to September 2021.

# How to apply

To apply for the Ark Globe Academy Sixth Form please visit [www.arkglobe.org](http://www.arkglobe.org) and complete the online application form.

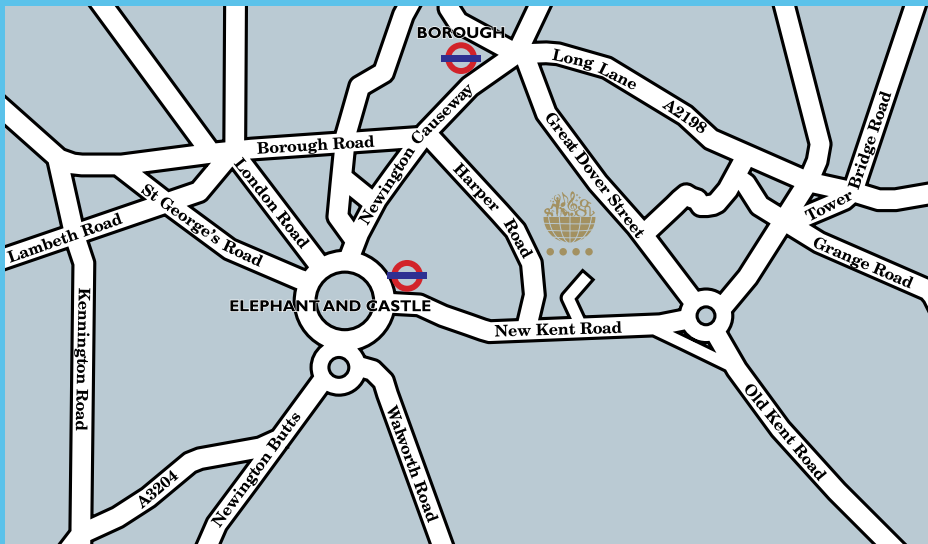
**Ark Globe Academy**  
Harper Road  
London SE1 6AF

☎ 020 7407 6877

✉ [info@arkglobe.org](mailto:info@arkglobe.org)

🌐 [arkglobe.org](http://arkglobe.org)

🐦 @ARKGlobeAcademy



**Ark Globe  
Academy**