



# Knole Academy

Creativity in Learning  
Confidence to Achieve

## SAFEGUARDING AND CHILD PROTECTION POLICY

September 2022

### **Preface**

#### **Safeguarding:**

The safeguarding of children and young people underpins the work of the academy and must be adhered to as a prime responsibility.

#### **Equality:**

Knole Academy is committed to providing all staff, students, parents, visitors and members of the wider community using the site with equality of opportunity in line with legislation about protected characteristics. All policies are screened for their impact on equality and issues are addressed if they arise. Knole Academy will provide special consideration on an individual basis if anyone is considered to have a specific special need. Any parent who feels that their child has such a need should contact the relevant Head of Year in the first instance to explain their concerns.

This policy, and its associated procedures and protocols, is based on these key principles.

## Contents

Important contacts .....	3
1. Aims and Introduction.....	3
2. Legislation and statutory guidance .....	4
3. Definitions .....	4
4. Equality statement .....	5
5. Roles and responsibilities .....	6
6. Confidentiality .....	9
7. Recognising abuse and taking action .....	10
8. Online safety and the use of mobile technology.....	23
9. Notifying parents or carers .....	24
10. Students with special educational needs, disabilities or health issues.....	25
11. Students with a social worker.....	25
12. Looked-after and previously looked-after children .....	25
13. Complaints and concerns about school safeguarding policies .....	26
14. Record-keeping .....	26
15. Training .....	27
16. Monitoring arrangements.....	28
17. Links with other policies .....	28
Appendix 1: Kent Education Safeguarding Contacts as of September 2022 .....	29
Appendix 2: Types of Abuse .....	31
Appendix 3: Safer recruitment and DBS checks – policy and procedures.....	32
Appendix 4: allegations of abuse made against staff.....	37
Appendix 5: Specific Safeguarding Issues .....	44
Appendix 6: Kent Levels Guidance .....	52
Appendix 7: Staff Code of Conduct.....	54

## Important contacts

ROLE/ORGANISATION	NAME	CONTACT DETAILS
Designated Safeguarding Lead (DSL)	Mrs Sarah Barnes	01732 454608 Ext 221 sbarnes@knoleacademy.org
Deputy DSL'S (DDSL's)	Mr Jeremy Major Mr Russell Turner Mrs Julie Bence Ms Mary Mcgauley Mr Tim White Ms Katherine Hughes Ms Kirsten Nixon Miss Angela Righelato Ms Jo Osborn Mrs Jane Elliott Mrs Jenny Corbett Mr Jonathan Cason Mr Gareth Hughes	<a href="mailto:jmajor@knoleacademy.org">jmajor@knoleacademy.org</a> <a href="mailto:rturner@knoleacademy.org">rturner@knoleacademy.org</a> <a href="mailto:jbence@knoleacademy.org">jbence@knoleacademy.org</a> <a href="mailto:mmcgauley@knoleacademy.org">mmcgauley@knoleacademy.org</a> <a href="mailto:twhite@knoleacademy.org">twhite@knoleacademy.org</a> <a href="mailto:khughes@knoleacademy.org">khughes@knoleacademy.org</a> <a href="mailto:knixon@knoleacademy.org">knixon@knoleacademy.org</a> <a href="mailto:arighelato@knoleacademy.org">arighelato@knoleacademy.org</a> <a href="mailto:josborn@knoleacademy.org">josborn@knoleacademy.org</a> <a href="mailto:jelliott@knoleacademy.org">jelliott@knoleacademy.org</a> <a href="mailto:jcorbett@knoleacademy.org">jcorbett@knoleacademy.org</a> <a href="mailto:jcason@knoleacademy.org">jcason@knoleacademy.org</a> <a href="mailto:ghughes@knoleacademy.org">ghughes@knoleacademy.org</a>
Chair of Governors	Miss Theresa Homewood	thomewood@knoleacademy.org
Safeguarding Governor	Mr Malcolm Fisher	mfisher@knoleacademy.org
Channel helpline	020 7340 7264 or counter.extremism@education.gov.uk	
Local authority designated officer (LADO)	03000 410 888 or email <a href="mailto:kentchildrenslado@kent.gov.uk">kentchildrenslado@kent.gov.uk</a> .	
Kent Education Safeguarding Service	See Appendix 1	

### 1. Aims and Introduction

Knole Academy is committed to safeguarding children and young people and expects everyone who works in our academy to share this commitment. Adults at Knole Academy take seriously the following safeguarding principles in order to ensure the welfare of every student:

- Appropriate action is taken in a timely manner to safeguard and promote children's welfare
- All staff are aware of their statutory responsibilities with respect to safeguarding and there is a culture of vigilance in the academy
- Staff are properly trained in recognising and reporting safeguarding issues, and that students who have a social worker may be more at risk than other students and face greater educational barriers
- Providing an environment in which students feel safe, secure, valued and respected, confident to talk openly and sure of being listened to
- Providing suitable support and guidance so that students have a range of appropriate adults to approach if they are in difficulties
- Students are taught about safeguarding, including online, as part of a broad and balanced curriculum. They are taught to recognise when they are at risk and how to get help when they need it

- The academy assesses the risks and issues in the wider community when considering the safety and wellbeing of our students

We always act in the best interests of the child

## 2. Legislation and statutory guidance

This policy is based on the Department for Education's statutory guidance [Keeping Children Safe in Education \(2022\)](#) and [Working Together to Safeguard Children \(2018\)](#), and the [Governance Handbook](#). We comply with this guidance and the arrangements agreed and published by our 3 local safeguarding partners, the Local Authority, Police and Health.

This policy is also based on the following legislation:

- › Part 3 of the schedule to the [Education \(Independent School Standards\) Regulations 2014](#), which places a duty on academies and independent schools to safeguard and promote the welfare of Students at the school
- › [The Children Act 1989](#) (and [2004 amendment](#)), which provides a framework for the care and protection of children
- › Section 5B(11) of the Female Genital Mutilation Act 2003, as inserted by section 74 of the [Serious Crime Act 2015](#), which places a statutory duty on teachers to report to the police where they discover that female genital mutilation (FGM) appears to have been carried out on a girl under 18
- › [Statutory guidance on FGM](#), which sets out responsibilities with regards to safeguarding and supporting girls affected by FGM
- › [The Rehabilitation of Offenders Act 1974](#), which outlines when people with criminal convictions can work with children
- › Schedule 4 of the [Safeguarding Vulnerable Groups Act 2006](#), which defines what 'regulated activity' is in relation to children
- › [Statutory guidance on the Prevent duty](#), which explains schools' duties under the Counter-Terrorism and Security Act 2015 with respect to protecting people from the risk of radicalisation and extremism
- › [The Human Rights Act 1998](#), which explains that being subjected to harassment, violence and/or abuse, including that of a sexual nature, may breach any or all of the rights which apply to individuals under the [European Convention on Human Rights](#) (ECHR)
- › [The Equality Act 2010](#), which makes it unlawful to discriminate against people regarding particular protected characteristics (including disability, sex, sexual orientation, gender reassignment and race). This means our governors and headteacher should carefully consider how they are supporting their Students with regard to these characteristics. The Act allows our school to take positive action to deal with particular disadvantages affecting Students (where we can show it's proportionate). This includes making reasonable adjustments for disabled Students. For example, it could include taking positive action to support girls where there's evidence that they're being disproportionately subjected to sexual violence or harassment
- › [The Public Sector Equality Duty \(PSED\)](#), which explains that we must have due regard to eliminating unlawful discrimination, harassment and victimisation. The PSED helps us to focus on key issues of concern and how to improve pupil outcomes. Some Students may be more at risk of harm from issues such as sexual violence; homophobic, biphobic or transphobic bullying; or racial discrimination

This policy also complies with our funding agreement and articles of association.

## 3. Definitions

**Safeguarding and promoting the welfare of children** means:

- › Protecting children from maltreatment

- › Preventing impairment of children's mental and physical health or development
- › Ensuring that children grow up in circumstances consistent with the provision of safe and effective care
- › Taking action to enable all children to have the best outcomes

**Child protection** is part of this definition and refers to activities undertaken to prevent children suffering, or being likely to suffer, significant harm.

**Abuse** is a form of maltreatment of a child and may involve inflicting harm or failing to act to prevent harm. Appendix 2 explains the different types of abuse.

**Neglect** is a form of abuse and is the persistent failure to meet a child's basic physical and/or psychological needs, likely to result in the serious impairment of the child's health or development. Appendix 2 defines neglect in more detail.

**Sharing of nudes and semi-nudes** (also known as sexting or youth produced sexual imagery) is where children share nude or semi-nude images, videos or live streams.

**Children** includes everyone under the age of 18.

The following 3 **safeguarding partners** are identified in Keeping Children Safe in Education (and defined in the Children Act 2004, as amended by chapter 2 of the Children and Social Work Act 2017). They will make arrangements to work together to safeguard and promote the welfare of local children, including identifying and responding to their needs:

- › The local authority (LA)
- › A clinical commissioning group for an area within the LA
- › The chief officer of police for a police area in the LA area

**Victim** is a widely understood and recognised term, but we understand that not everyone who has been subjected to abuse considers themselves a victim or would want to be described that way. When managing an incident, we will be prepared to use any term that the child involved feels most comfortable with.

**Alleged perpetrator(s)** and **perpetrator(s)** are widely used and recognised terms. However, we will think carefully about what terminology we use (especially in front of children) as, in some cases, abusive behaviour can be harmful to the perpetrator too. We will decide what's appropriate and which terms to use on a case-by-case basis.

#### 4. Equality statement

Some children have an increased risk of abuse, and additional barriers can exist for some children with respect to recognising or disclosing it. We are committed to anti-discriminatory practice and recognise children's diverse circumstances. We ensure that all children have the same protection, regardless of any barriers they may face.

We give special consideration to children who:

- › Have special educational needs (SEN) or disabilities or health conditions (see section 10)
- › Are young carers
- › May experience discrimination due to their race, ethnicity, religion, gender identification or sexuality
- › Have English as an additional language
- › Are known to be living in difficult situations – for example, temporary accommodation or where there are issues such as substance abuse or domestic violence
- › Are at risk of FGM, sexual exploitation, forced marriage, or radicalisation
- › Are asylum seekers
- › Are at risk due to either their own or a family member's mental health needs

- › Are looked after or previously looked after (see section 12)
- › Are missing from education
- › Whose parent/carer has expressed an intention to remove them from school to be home educated

## 5. Roles and responsibilities

Safeguarding and child protection is **everyone's** responsibility. This policy applies to all staff, volunteers and governors in the school and is consistent with the procedures of the 3 safeguarding partners. Our policy and procedures also apply to extended school and off-site activities.

The school plays a crucial role in preventative education. This is in the context of a whole-school approach to preparing Students for life in modern Britain, and a culture of zero tolerance of sexism, misogyny/misandry, homophobia, biphobia and sexual violence/harassment. This will be underpinned by our:

- › Behaviour policy
- › Pastoral support system
- › Planned programme of Relevant Curriculum (relationships, sex and health education (RSHE)), which is inclusive and delivered regularly, tackling issues such as:
  - Healthy and respectful relationships
  - Boundaries and consent
  - Stereotyping, prejudice and equality
  - Body confidence and self-esteem
  - How to recognise an abusive relationship (including coercive and controlling behaviour)
  - The concepts of, and laws relating to, sexual consent, sexual exploitation, abuse, grooming, coercion, harassment, rape, domestic abuse, so-called honour-based violence such as forced marriage and female genital mutilation (FGM) and how to access support
  - What constitutes sexual harassment and sexual violence and why they're always unacceptable

### 5.1 All staff

All staff will:

- › Read and understand part 1 and annex B of the Department for Education's statutory safeguarding guidance, [Keeping Children Safe in Education](#), and review this guidance at least annually
- › Sign a declaration at the beginning of each academic year to say that they have reviewed the guidance and complete a quiz to check understanding
- › Reinforce the importance of online safety when communicating with parents. This includes making parents aware of what we ask children to do online (e.g. sites they need to visit or who they'll be interacting with online)
- › Provide a safe space for Students who are LGBT to speak out and share their concerns

All staff will be aware of:

- › Our systems which support safeguarding, including this child protection and safeguarding policy, the staff code of conduct, the role and identity of the designated safeguarding lead (DSL) and DDSL's, the behaviour and exclusions policy, the online safety policy and the safeguarding response to children who go missing from education

- › The early help assessment process (sometimes known as the common assessment framework) and their role in it, including identifying emerging problems, liaising with the DSL, and sharing information with other professionals to support early identification and assessment
- › The process for making referrals to local authority children's social care and for statutory assessments that may follow a referral, including the role they might be expected to play
- › What to do if they identify a safeguarding issue or a child tells them they are being abused or neglected, including specific issues such as FGM, and how to maintain an appropriate level of confidentiality while liaising with relevant professionals
- › The signs of different types of abuse and neglect, as well as specific safeguarding issues, such as child-on-child abuse, child sexual exploitation (CSE), child criminal exploitation (CCE), indicators of being at risk from or involved with serious violent crime, FGM, radicalisation and serious violence (including that linked to county lines)
- › The importance of reassuring victims that they are being taken seriously and that they will be supported and kept safe
- › The fact that children can be at risk of harm inside and outside of their home, at school and online
- › The fact that children who are (or who are perceived to be) lesbian, gay, bi or trans (LGBT) can be targeted by other children
- › What to look for to identify children who need help or protection

Section 15 and appendix 5 of this policy outline in more detail how staff are supported to do this.

## **5.2 The designated safeguarding lead (DSL)**

The DSL is a member of the senior leadership team. Our DSL is Mrs Sarah Barnes. The DSL takes lead responsibility for child protection and wider safeguarding in the school.

During term time, the DSL will be available during school hours for staff to discuss any safeguarding concerns. Out of hours she is available at [sbarnes@knoleacademy.org](mailto:sbarnes@knoleacademy.org).

When the DSL is absent, the DDSL's listed on page 3 will act as cover.

The DSL will be given the time, funding, training, resources and support to:

- › Provide advice and support to other staff on child welfare and child protection matters
- › Take part in strategy discussions and inter-agency meetings and/or support other staff to do so
- › Contribute to the assessment of children
- › Refer suspected cases, as appropriate, to the relevant body (local authority children's social care, Channel programme, Disclosure and Barring Service, and/or police), and support staff who make such referrals directly
- › Have a good understanding of harmful sexual behaviour

The DSL will also:

- › Keep the headteacher informed of any issues
- › Liaise with local authority case managers and designated officers for child protection concerns as appropriate
- › Discuss the local response to sexual violence and sexual harassment with police and local authority children's social care colleagues to prepare the school's policies
- › Be confident that they know what local specialist support is available to support all children involved (including victims and alleged perpetrators) in sexual violence and sexual harassment, and be confident as to how to access this support

- › Be aware that children must have an ‘appropriate adult’ to support and help them in the case of a police investigation or search

The full responsibilities of the DSL and DDSL’s are set out in their job description.

### 5.3 The governing body

The governing body will:

- › Facilitate a whole-school approach to safeguarding, ensuring that safeguarding and child protection are at the forefront of, and underpin, all relevant aspects of process and policy development
- › Evaluate and approve this policy at each review, ensuring it complies with the law, and hold the headteacher to account for its implementation
- › Be aware of its obligations under the Human Rights Act 1998, the Equality Act 2010 (including the Public Sector Equality Duty), and our school’s local multi-agency safeguarding arrangements
- › Appoint a senior board level (or equivalent) link governor to monitor the effectiveness of this policy in conjunction with the full governing board. This is always a different person from the DSL
- › Make sure:
  - The DSL has the appropriate status and authority to carry out their job, including additional time, funding, training, resources and support
  - Online safety is a running and interrelated theme within the whole-school approach to safeguarding and related policies
  - The leadership team and relevant staff are aware of and understand the IT filters and monitoring systems in place, manage them effectively and know how to escalate concerns
  - The school has procedures to manage any safeguarding concerns (no matter how small) or allegations that do not meet the harm threshold (low-level concerns) about staff members (including supply staff, volunteers and contractors). Appendix 4 of this policy covers this procedure
  - That this policy reflects that children with SEND, or certain medical or physical health conditions, can face additional barriers to any abuse or neglect being recognised
- › Where another body is providing services or activities (regardless of whether or not the children who attend these services/activities are children on the school roll):
  - Seek assurance that the other body has appropriate safeguarding and child protection policies/procedures in place, and inspect them if needed
  - Make sure there are arrangements for the body to liaise with the school about safeguarding arrangements, where appropriate
  - Make sure that safeguarding requirements are a condition of using the school premises, and that any agreement to use the premises would be terminated if the other body fails to comply

The chair of governors will act as the ‘case manager’ in the event that an allegation of abuse is made against the headteacher, where appropriate (see appendix 4).

All governors will read Keeping Children Safe in Education in its entirety.

Section 15 of this policy has information on how governors are supported to fulfil their role.

### 5.4 The Headteacher

The headteacher is responsible for the implementation of this policy, including:



- › Ensuring that staff (including temporary staff) and volunteers:
  - Are informed of our systems which support safeguarding, including this policy, as part of their induction
  - Understand and follow the procedures included in this policy, particularly those concerning referrals of cases of suspected abuse and neglect
- › Communicating this policy to parents/carers when their child joins the school and via the school website
- › Ensuring that the DSL has appropriate time, funding, training and resources, and that there is always adequate cover if the DSL is absent
- › Ensuring that all staff undertake appropriate safeguarding and child protection training, and updating the content of the training regularly
- › Acting as the ‘case manager’ in the event of an allegation of abuse made against another member of staff or volunteer, where appropriate (see appendix 4)
- › Making decisions regarding all low-level concerns, though they may wish to collaborate with the DSL on this

## 5.5 Virtual school heads

Virtual school heads have a non-statutory responsibility for the strategic oversight of the educational attendance, attainment and progress of Students with a social worker.

They should also identify and engage with key professionals, e.g. DSLs, SENCOs, social workers, mental health leads and others.

## 6. Confidentiality

Knole Academy Data Protection Policy

[https://knoleacademynew.s3.amazonaws.com/uploads/key\\_information/Data-Protection-Policy-March-2022.pdf?t=1663146770](https://knoleacademynew.s3.amazonaws.com/uploads/key_information/Data-Protection-Policy-March-2022.pdf?t=1663146770) details how confidentiality is maintained.

It should be noted that:

- Timely information sharing is essential to effective safeguarding
- Fears about sharing information must not be allowed to stand in the way of the need to promote the welfare, and protect the safety, of children
- The Data Protection Act (DPA) 2018 and UK GDPR do not prevent, or limit, the sharing of
- If a victim asks the school not to tell anyone about the sexual violence or sexual harassment:
  - There’s no definitive answer, because even if a victim doesn’t consent to sharing information, staff may still lawfully share it if there’s another legal basis under the UK GDPR that applies
  - The DSL will have to balance the victim’s wishes against their duty to protect the victim and other children
  - The DSL should consider that:
    - Parents or carers should normally be informed (unless this would put the victim at greater risk)
    - The basic safeguarding principle is: if a child is at risk of harm, is in immediate danger, or has been harmed, a referral should be made to local authority children’s social care
    - Rape, assault by penetration and sexual assault are crimes. Where a report of rape, assault by penetration or sexual assault is made, this should be referred to the police. While the age of criminal responsibility is 10, if the

alleged perpetrator is under 10, the starting principle of referring to the police remains

- Regarding anonymity, all staff will:
  - Be aware of anonymity, witness support and the criminal process in general where an allegation of sexual violence or sexual harassment is progressing through the criminal justice system
  - Do all they reasonably can to protect the anonymity of any children involved in any report of sexual violence or sexual harassment, for example, carefully considering which staff should know about the report, and any support for children involved
  - Consider the potential impact of social media in facilitating the spreading of rumours and exposing victims' identities
- If staff need to share 'special category personal data', the DPA 2018 contains 'safeguarding of children and individuals at risk' as a processing condition that allows practitioners to share information without consent if it is not possible to gain consent, it cannot be reasonably expected that a practitioner gains consent, or if to gain consent would place a child at risk
- Staff should never promise a child that they will not tell anyone about a report of abuse, as this may not be in the child's best interests
- The government's [information sharing advice for safeguarding practitioners](#) includes 7 'golden rules' for sharing information, and will support staff who have to make decisions about sharing information
- If staff are in any doubt about sharing information, they should speak to the designated safeguarding lead (or deputy)

Confidentiality is also addressed in this policy with respect to record-keeping in section 14, and allegations of abuse against staff in appendix 4

## 7. Recognising abuse and taking action

Staff, volunteers and governors must follow the procedures set out below in the event of a safeguarding issue.

Please note – in this and subsequent sections, you should take any references to the DSL to mean "the DSL (or deputy DSL)".

### 7.1 If a child is suffering or likely to suffer harm, or in immediate danger

If possible, discuss your concerns in person with the DSL. Follow-up in writing using Edukey 'Safeguard My School' and the DSL will determine the next steps.

All staff new to the school are taught how to report a concern in their safeguarding training.

If this is not possible, make a referral to children's social care and/or the police **immediately** if you believe a child is suffering or likely to suffer from harm, or in immediate danger. **Anyone can make a referral.**

Tell the DSL as soon as possible if you make a referral directly.

Kent procedures for making a referral and threshold guidance can be found in appendix 6. The link below can also be used to report child abuse to a local council:

<https://www.gov.uk/report-child-abuse-to-local-council>

### 7.2 If a child makes a disclosure to you

If a child discloses a safeguarding issue to you, you should:

- › Listen to and believe them. Allow them time to talk freely and do not ask leading questions

- › Stay calm and do not show that you are shocked or upset
- › Tell the child they have done the right thing in telling you. Do not tell them they should have told you sooner
- › Explain what will happen next and that you will have to pass this information on. Do not promise to keep it a secret
- › Write up your conversation as soon as possible in the child's own words. Stick to the facts, and do not put your own judgement on it
- › Sign and date the write-up and pass it on to the DSL. Alternatively, if appropriate, make a referral to children's social care and/or the police directly (see 7.1), and tell the DSL as soon as possible that you have done so. Aside from these people, do not disclose the information to anyone else unless told to do so by a relevant authority involved in the safeguarding process

Bear in mind that some children may:

- › Not feel ready, or know how to tell someone that they are being abused, exploited or neglected
- › Not recognise their experiences as harmful
- › Feel embarrassed, humiliated or threatened. This could be due to their vulnerability, disability, sexual orientation and/or language barriers

None of this should stop you from having a 'professional curiosity' and speaking to the DSL if you have concerns about a child.

### 7.3 If you discover that FGM has taken place or a pupil is at risk of FGM

Keeping Children Safe in Education explains that FGM comprises "all procedures involving partial or total removal of the external female genitalia, or other injury to the female genital organs".

FGM is illegal in the UK and a form of child abuse with long-lasting, harmful consequences. It is also known as 'female genital cutting', 'circumcision' or 'initiation'.

Possible indicators that a pupil has already been subjected to FGM, and factors that suggest a pupil may be at risk, are set out in appendix 5 of this policy.

**Any teacher** who either:

- Is informed by a girl under 18 that an act of FGM has been carried out on her; or
- Observes physical signs which appear to show that an act of FGM has been carried out on a girl under 18 and they have no reason to believe that the act was necessary for the girl's physical or mental health or for purposes connected with labour or birth

Must immediately report this to the police, personally. This is a mandatory statutory duty, and teachers will face disciplinary sanctions for failing to meet it.

Unless they have been specifically told not to disclose, they should also discuss the case with the DSL and involve children's social care as appropriate.

**Any other member of staff** who discovers that an act of FGM appears to have been carried out on a **pupil under 18** must speak to the DSL and follow our local safeguarding procedures.

The duty for teachers mentioned above does not apply in cases where a pupil is *at risk* of FGM or FGM is suspected but is not known to have been carried out. Staff should not examine Students.

**Any member of staff** who suspects a pupil is *at risk* of FGM or suspects that FGM has been carried out or discovers that a pupil **aged 18 or over** appears to have been a victim of FGM should speak to the DSL and follow our local safeguarding procedures which are to report via Edukey.

### 7.4 If you have concerns about a child (as opposed to believing a child is suffering or likely to suffer from harm, or is in immediate danger)

Figure 1 below, illustrates the procedure to follow if you have any concerns about a child's welfare.

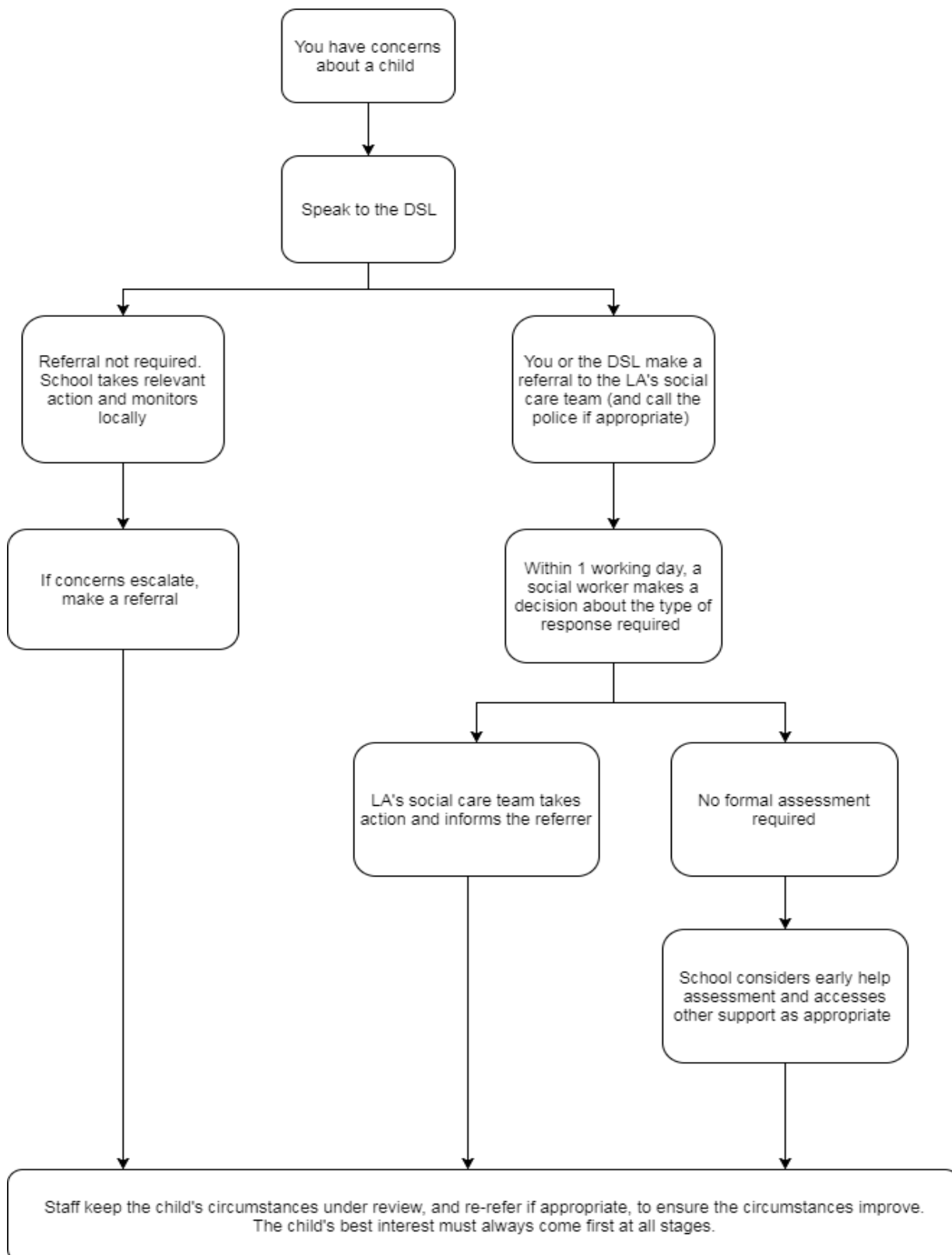
Where possible, speak to the DSL first to agree a course of action.

If in exceptional circumstances the DSL is not available, this should not delay appropriate action being taken. Speak to a member of the senior leadership team and/or take advice from local authority children's social care. You can also seek advice at any time from the NSPCC helpline on 0808 800 5000. Share details of any actions you take with the DSL as soon as practically possible.

Make a referral to local authority children's social care directly, if appropriate (see 'Referral' below). Share any action taken with the DSL as soon as possible.

**Figure 1: procedure if you have concerns about a child's welfare (as opposed to believing a child is suffering or likely to suffer from harm, or in immediate danger)**

(Note – if the DSL is unavailable, this should not delay action. See section 7.4 for what to do.)



### **Early help assessment**

If an early help assessment is appropriate, the DSL will generally lead on liaising with other agencies and setting up an inter-agency assessment as appropriate. Staff may be required to support other agencies and professionals in an early help assessment, in some cases acting as the lead practitioner.

We will discuss and agree, with statutory safeguarding partners, levels for the different types of assessment, as part of local arrangements.

The DSL will keep the case under constant review and the school will consider a referral to local authority children's social care if the situation does not seem to be improving. Timelines of interventions will be monitored and reviewed.

### **Referral**

If it is appropriate to refer the case to local authority children's social care or the police, the DSL will make the referral or support you to do so.

If you make a referral directly (see section 7.1), you must tell the DSL as soon as possible.

The local authority will make a decision within 1 working day of a referral about what course of action to take and will let the person who made the referral know the outcome. The DSL or person who made the referral must follow up with the local authority if this information is not made available, and ensure outcomes are properly recorded.

If the child's situation does not seem to be improving after the referral, the DSL or person who made the referral must follow local escalation procedures to ensure their concerns have been addressed and that the child's situation improves.

A conversation with the Team Manager is advised in the first instance. The Kent Safeguarding Children Multi-Agency Partnership escalation and professional challenge guidance can be found at <https://www.kscmp.org.uk/procedures>

### **7.5 If you have concerns about extremism**

If a child is not suffering or likely to suffer from harm, or in immediate danger, where possible speak to the DSL first to agree a course of action.

If in exceptional circumstances the DSL is not available, this should not delay appropriate action being taken. Speak to a member of the senior leadership team and/or seek advice from local authority children's social care. Make a referral to local authority children's social care directly, if appropriate (see 'Referral' above). Inform the DSL or deputy as soon as practically possible after the referral.

Where there is a concern, the DSL will consider the level of risk and decide which agency to make a referral to. This could include [Channel](#), the government's programme for identifying and supporting individuals at risk of being drawn into terrorism, or the local authority children's social care team.

The Department for Education also has a dedicated telephone helpline, 020 7340 7264, which school staff and governors can call to raise concerns about extremism with respect to a pupil. You can also email [counter.extremism@education.gov.uk](mailto:counter.extremism@education.gov.uk). Note that this is not for use in emergency situations.

In an emergency, call 999 or the confidential anti-terrorist hotline on 0800 789 321 if you:

- › Think someone is in immediate danger
- › Think someone may be planning to travel to join an extremist group
- › See or hear something that may be terrorist-related

### **7.6 If you have a mental health concern**

Mental health problems can, in some cases, be an indicator that a child has suffered or is at risk of suffering abuse, neglect or exploitation.

Staff will be alert to behavioural signs that suggest a child may be experiencing a mental health problem or be at risk of developing one.

If you have a mental health concern about a child that is also a safeguarding concern, take immediate action by following the steps in section 7.4.

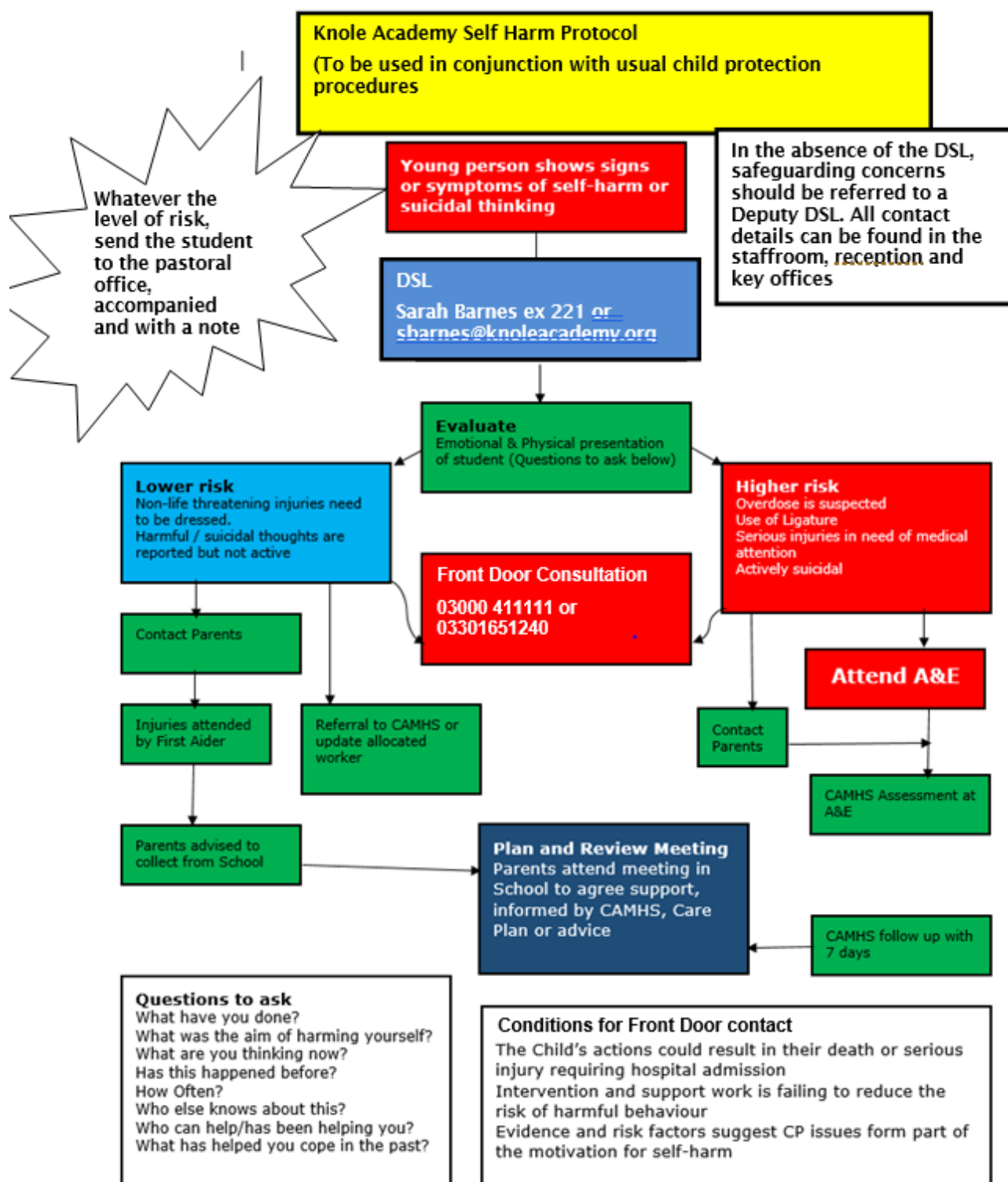
If you have a mental health concern that is **not** also a safeguarding concern, speak to the DSL and report on Edukey to agree a course of action.

Support for emotional wellbeing is signposted in most classrooms within the school. Speak to the child's Head of Year for referrals.

### **Self-harm and suicidal ideation and/or attempts**

In the event of an incident of self-harm, expressions of intent to commit suicide or an attempt to commit suicide on the school premises the procedure in figure 2 on the next page must be followed.

Figure 2: Knole Academy Self-Harm Protocol





## **7.7 Concerns about a staff member, supply teacher, volunteer or contractor**

If you have concerns about a member of staff (including a supply teacher, volunteer or contractor), or an allegation is made about a member of staff (including a supply teacher, volunteer or contractor) posing a risk of harm to children, speak to the headteacher as soon as possible. If the concerns/allegations are about the headteacher, speak to the chair of governors.

The headteacher/chair of governors will then follow the procedures set out in appendix 4, if appropriate.

Where you believe there is a conflict of interest in reporting a concern or allegation about a member of staff (including a supply teacher, volunteer or contractor) to the headteacher, report it directly to the local authority designated officer (LADO).

## **7.8 Allegations of abuse made against other Students**

We recognise that children are capable of abusing their peers. Abuse will never be tolerated or passed off as “banter”, “just having a laugh” or “part of growing up”, as this can lead to a culture of unacceptable behaviours and an unsafe environment for Students.

We also recognise the gendered nature of child-on-child abuse. However, all child-on-child abuse is unacceptable and will be taken seriously.

Most cases of Students hurting other Students will be dealt with under our school’s behaviour policy, but this child protection and safeguarding policy will apply to any allegations that raise safeguarding concerns. This might include where the alleged behaviour:

- › Is serious, and potentially a criminal offence
- › Could put Students in the school at risk
- › Is violent
- › Involves Students being forced to use drugs or alcohol
- › Involves sexual exploitation, sexual abuse or sexual harassment, such as indecent exposure, sexual assault, upskirting or sexually inappropriate pictures or videos (including the sharing of nudes and semi-nudes)

See appendix 5 for more information about child-on-child abuse.

### **Procedures for dealing with allegations of child-on-child abuse**

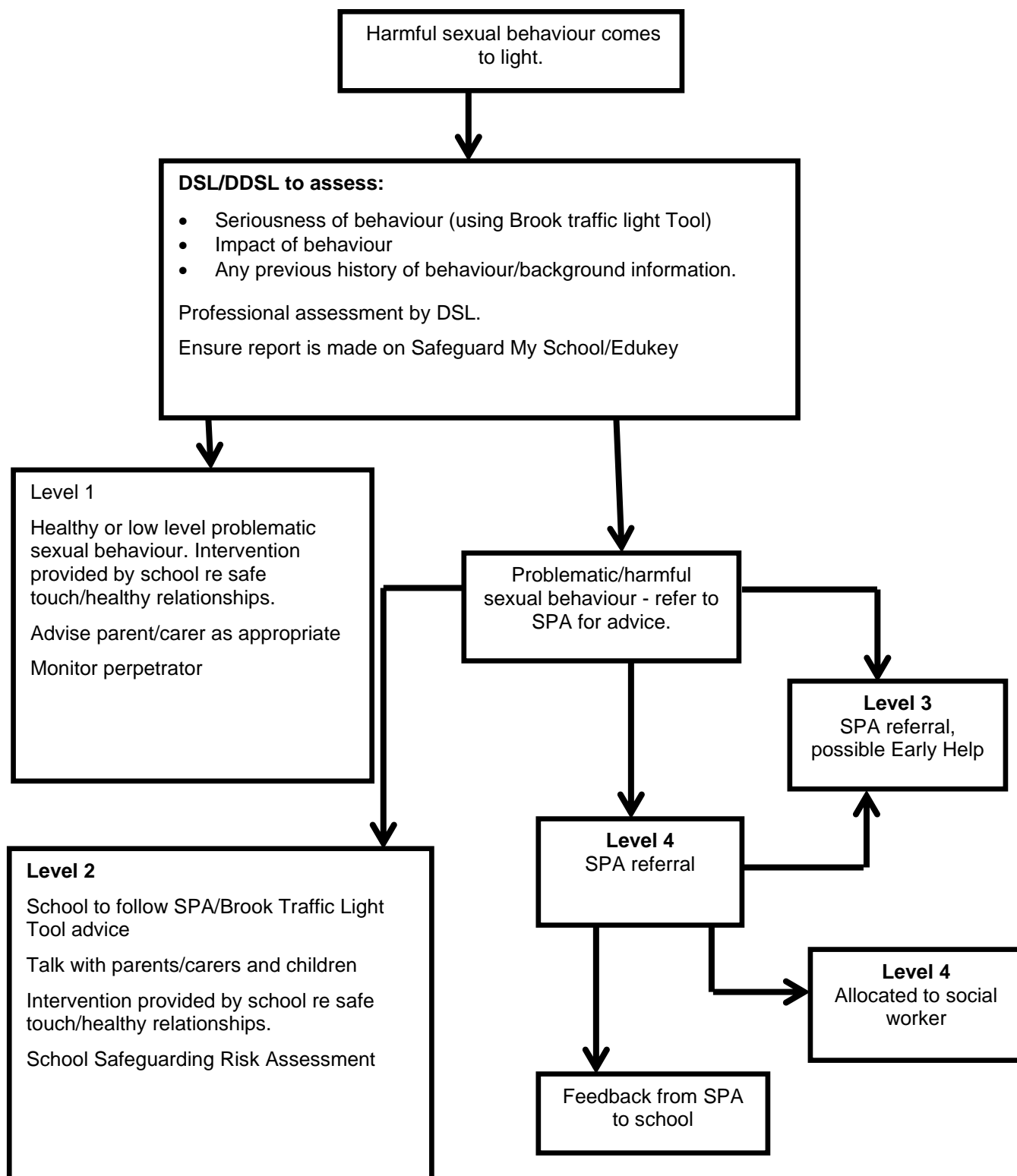
If a pupil makes an allegation of abuse against another pupil:

- › You must record the allegation and tell the DSL, but do not investigate it
- › The DSL will contact the local authority children’s social care team and follow its advice, as well as the police if the allegation involves a potential criminal offence
- › The DSL will put a risk assessment and support plan into place for all children involved (including the victim(s), the child(ren) against whom the allegation has been made and any others affected) with a named person they can talk to if needed. This will include considering school transport as a potentially vulnerable place for a victim or alleged perpetrator(s)
- › The DSL will contact the children and adolescent mental health services (CAMHS), if appropriate

If the incident is a criminal offence and there are delays in the criminal process, the DSL will work closely with the police (and other agencies as required) while protecting children and/or taking any disciplinary measures against the alleged perpetrator. We will ask the police if we have any questions about the investigation.

Figure 3 below shows how managing harmful sexual behaviour in school is managed alongside the Brook Traffic Light Tool.

**Figure 3: Flowchart for managing harmful sexual behaviour in school and abridged 'Brook Traffic Light Tool'**



## A guide to identifying sexual behaviours

This 'Traffic Light Tool' forms part of a resource designed to help professionals who work with children and young people to identify, assess and respond appropriately to sexual behaviours.

By identifying sexual behaviours as **GREEN**, **AMBER** or **RED**, professionals across different agencies can work to the same criteria when making decisions and protect children and young people with a unified approach. The normative list aims to increase understanding of healthy sexual development and distinguish it from harmful behaviour.

This tool must be used within the context of the guidance provided at [www.brook.org.uk/traffic-lights](http://www.brook.org.uk/traffic-lights) and should not be used in isolation.

### What is a Green behaviour?

Green behaviours reflect safe and healthy sexual development. They are:

- displayed between children or young people of similar age or developmental ability
- reflective of natural curiosity, experimentation, consensual activities and positive choices

Expressing sexuality through sexual behaviour is natural, healthy and a part of growing up.

Green behaviours provide an opportunity to positively reinforce appropriate behaviour, and to provide further information and support.

### Green behaviours

- holding or playing with own genitals
- attempting to touch or curiously about other children's genitals
- attempting to touch or curiously about breasts, bottoms or genitals of adults
- games e.g. mummies and daddies, doctors and nurses
- enjoying nakedness
- interest in body parts and what they do
- curiously about the differences between boys and girls
- feeling and touching own genitals
- curiosity about other children's genitals
- curiously about sex and relationships, e.g. differences between boys and girls, how sex happens, where babies come from, same-sex relationships
- sense of privacy about bodies
- telling stories or asking questions using swear and slang words for parts of the body

- solitary masturbation
- use of sexual language including swear and slang words
- having girlfriend/friends who are of the same or opposite gender
- interest in popular culture, e.g. fashion, music, media, online games, chatting online
- need for privacy
- consensual kissing, hugging, holding hands with peers

- solitary masturbation
- sexually explicit conversations with peers
- obscenities and jokes within the current cultural norm
- interest in erotica / pornography
- use of internet / e-media to chat online
- having sexual or non-sexual relationships
- sexual activity including hugging, kissing, holding hands
- consenting oral and / or penetrative sex with others of the same or opposite gender who are of similar age and developmental ability
- choosing not to be sexually active

### Age 0 – 5

### Age 5 – 9

### Age 9 – 13

### Age 13 – 17

### What is an Amber behaviour?

Amber behaviours have the potential to be outside of safe and healthy development. They may be:

- unusual for that particular child or young person
- of potential concern due to age or developmental differences
- of potential concern due to activity type, frequency, duration or the context in which they occur

Amber behaviours signal the need to take notice and gather information to consider appropriate action.

Please refer to internal guidance or safeguarding frameworks to decide on the next steps to take or talk to a designated safeguarding lead.

### Amber behaviours

- preoccupation with adult sexual behaviour
- pulling other children's pants down / skirts up / trousers down against their will
- talking about sex using adult slang
- preoccupation with touching the genitals of other people
- following others into toilets or changing rooms to look at them or touch them
- talking about sexual activities seen on TV / online
- questions about sexual activity which persist or are repeated frequently, despite an answer having been given
- sexual bullying face to face or through texts or online messaging
- engaging in mutual masturbation
- persistent sexual images and ideas in talk, play and art
- use of adult slang language to discuss sex

- uncharacteristic and risk-related behaviour, e.g. sudden and/or provocative changes in dress, withdrawal from friends, mixing with new or older people, having more or less money than usual, going missing
- verbal, physical or cyber/virtual sexual bullying involving sexual aggression
- LGBT (lesbian, gay, bisexual, transgender) targeted bullying
- exhibitionism, e.g. flashing or mooring
- giving out contact details online
- viewing pornographic material
- worrying about being pregnant or having STIs

- uncharacteristic and risk-related behaviour, e.g. sudden and/or provocative changes in dress, withdrawal from friends, mixing with new or older people, having more or less money than usual, going missing
- concern about body image
- taking and sending naked or sexually provocative images of self or others
- single occurrence of peeping, exposing, mooning or obscene gestures
- giving out contact details online
- joining adult-only social networking sites and giving false personal information
- arranging a face to face meeting with an online contact alone
- accessing exploitative or violent pornography

### What is a Red behaviour?

Red behaviours are outside of safe and healthy behaviour. They may be:

- excessive, secretive, compulsive, coercive, degrading, or threatening
- involving significant age, developmental, or power differences
- of concern due to the activity type, frequency, duration, or the context in which they occur

Red behaviours indicate a need for immediate intervention and action, though it is important to consider actions carefully.

Please refer to internal guidance or safeguarding frameworks to decide on the next steps to take or talk to a designated safeguarding lead.

### Red behaviours

- persistently touching the genitals of other children
- persistent attempts to touch the genitals of adults
- simulation of sexual activity in play
- sexual behaviour between young children involving penetration with objects
- forcing other children to engage in sexual play
- frequent masturbation in front of others
- sexual behaviour engaging significantly younger or less able children
- forcing other children to take part in sexual activities
- simulation of oral or penetrative sex
- sourcing pornographic material online

- exposing genitals or masturbating in public
- distributing naked or sexually provocative images of self or others
- sexually explicit talk with younger children
- sexual harassment
- arranging to meet with an online acquaintance in secret
- genital injury to self or others
- forcing other children of same age, younger or less able to take part in sexual activities
- sexual activity e.g. oral sex or intercourse
- presence of sexually transmitted infection (STI)
- evidence of pregnancy

- exposing genitals or masturbating in public
- preoccupation with sex, which interferes with daily function
- sexual degradation/humiliation of self or others
- attempting/forcing others to expose genitals
- sexually aggressive/exploitative behaviour
- sexually explicit talk with younger children
- sexual harassment
- non-consensual sexual activity
- use of/acceptance of power and control in sexual relationships
- genital injury to self or others
- sexual contact with others where there is a big difference in age or ability
- sexual activity with someone in authority and in a position of trust
- sexual activity with family members
- involvement in sexual exploitation and/or trafficking
- sexual contact with animals
- receipt of gifts or money in exchange for sex

## **Creating a supportive environment in school and minimising the risk of child-on-child abuse**

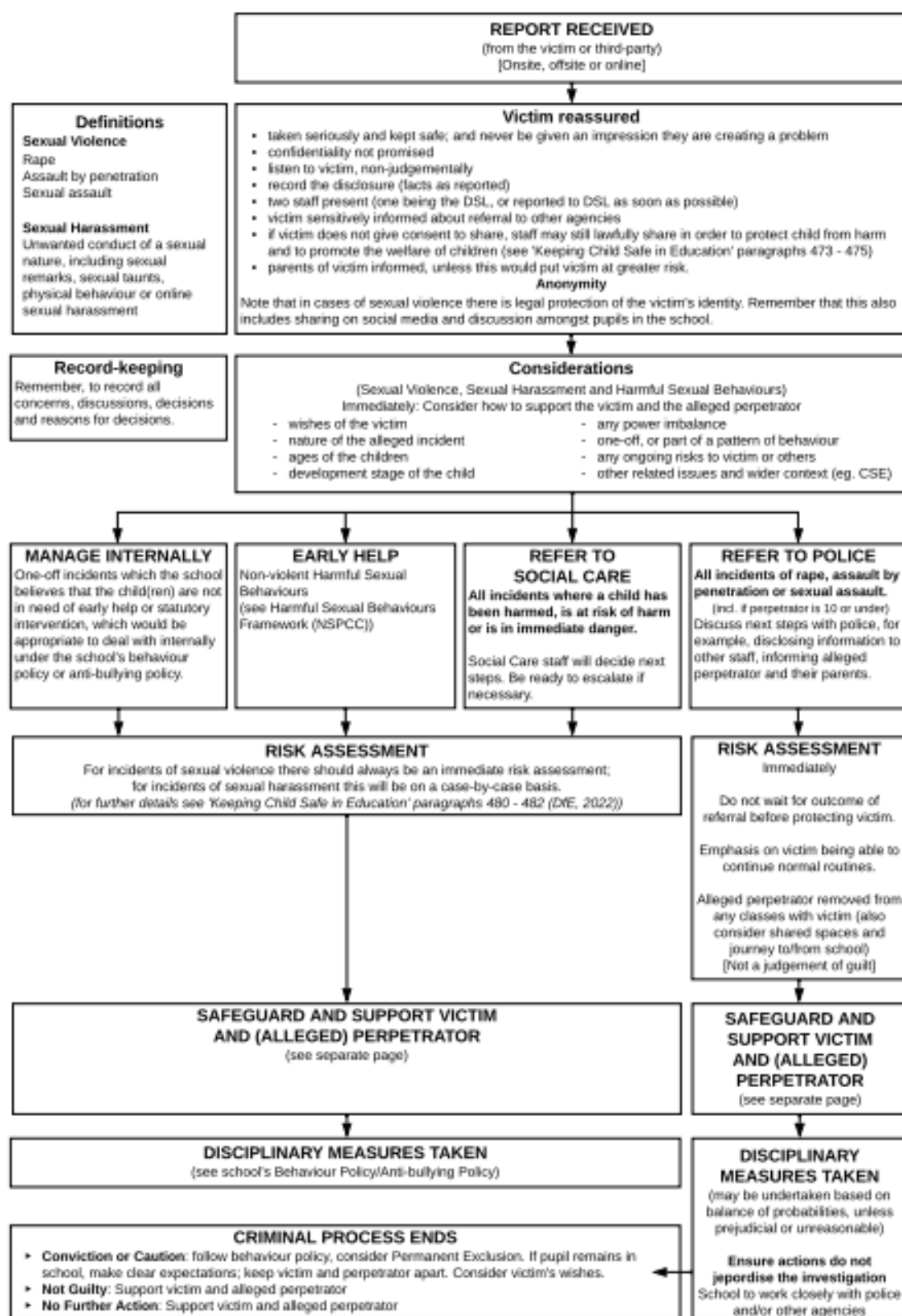
We recognise the importance of taking proactive action to minimise the risk of child-on-child abuse, and of creating a supportive environment where victims feel confident in reporting incidents.

To achieve this, we will:

- › Challenge any form of derogatory or sexualised language or inappropriate behaviour between peers, including requesting or sending sexual images
- › Be vigilant to issues that particularly affect different genders – for example, sexualised or aggressive touching or grabbing towards female Students, and initiation or hazing type violence with respect to boys
- › Ensure our curriculum helps to educate Students about appropriate behaviour and consent
- › Ensure Students are able to easily and confidently report abuse using our reporting systems (as described in section 7.10 below)
- › Ensure staff reassure victims that they are being taken seriously
- › Be alert to reports of sexual violence and/or harassment that may point to environmental or systemic problems that could be addressed by updating policies, processes and the curriculum, or could reflect wider issues in the local area that should be shared with safeguarding partners
- › Support children who have witnessed sexual violence, especially rape or assault by penetration. We will do all we can to make sure the victim, alleged perpetrator(s) and any witnesses are not bullied or harassed
- › Consider intra familial harms and any necessary support for siblings following a report of sexual violence and/or harassment
- › Ensure staff are trained to understand:
  - How to recognise the indicators and signs of child-on-child abuse, and know how to identify it and respond to reports
  - That even if there are no reports of child-on-child abuse in school, it does not mean it is not happening – staff should maintain an attitude of “it could happen here”
  - That if they have any concerns about a child’s welfare, they should act on them immediately rather than wait to be told, and that victims may not always make a direct report. For example:
    - Children can show signs or act in ways they hope adults will notice and react to
    - A friend may make a report
    - A member of staff may overhear a conversation
    - A child’s behaviour might indicate that something is wrong
  - That certain children may face additional barriers to telling someone because of their vulnerability, disability, gender, ethnicity and/or sexual orientation
  - That a pupil harming a peer could be a sign that the child is being abused themselves, and that this would fall under the scope of this policy
  - The important role they have to play in preventing child-on-child abuse and responding where they believe a child may be at risk from it
  - That they should speak to the DSL if they have any concerns
  - That social media is likely to play a role in the fall-out from any incident or alleged incident, including for potential contact between the victim, alleged perpetrator(s) and friends from either side

The DSL will take the lead role in any disciplining of the alleged perpetrator(s). The DSL will be guided by Figure 4 ‘Child-on-child sexual violence and sexual harassment’ flow chart below.

Figure 4 Child-on-child sexual violence and sexual harassment Flow Chart





We will provide support at the same time as taking any disciplinary action.

Disciplinary action can be taken while other investigations are going on, e.g. by the Police. The fact that another body is investigating or has investigated an incident doesn't (in itself) prevent our school from coming to its own conclusion about what happened and imposing a penalty accordingly. We will consider these matters on a case-by-case basis, taking into account whether:

- › Taking action would prejudice an investigation and/or subsequent prosecution – we will liaise with the police and/or LA children's social care to determine this
- › There are circumstances that make it unreasonable or irrational for us to reach our own view about what happened while an independent investigation is ongoing

## **7.9 Sharing of nudes and semi-nudes ('sexting')**

Knole Academy uses an approach based on [guidance from the UK Council for Internet Safety](#).

### **Your responsibilities when responding to an incident**

If you are made aware of an incident involving the consensual or non-consensual sharing of nude or semi-nude images/videos (also known as 'sexting' or 'youth produced sexual imagery'), you must report it to the DSL immediately.

You must **not**:

- › View, copy, print, share, store or save the imagery yourself, or ask a pupil to share or download it (if you have already viewed the imagery by accident, you must report this to the DSL)
- › Delete the imagery or ask the pupil to delete it
- › Ask the pupil(s) who are involved in the incident to disclose information regarding the imagery (this is the DSL's responsibility)
- › Share information about the incident with other members of staff, the pupil(s) it involves or their, or other, parents and/or carers
- › Say or do anything to blame or shame any young people involved

You should explain that you need to report the incident and reassure the pupil(s) that they will receive support and help from the DSL.

### **Initial review meeting**

Following a report of an incident, the DSL will hold an initial review meeting with appropriate school staff – this may include the staff member who reported the incident and the safeguarding or leadership team that deals with safeguarding concerns. This meeting will consider the initial evidence and aim to determine:

- › Whether there is an immediate risk to pupil(s)
- › If a referral needs to be made to the police and/or children's social care
- › If it is necessary to view the image(s) in order to safeguard the young person (in most cases, images or videos should not be viewed)
- › What further information is required to decide on the best response
- › Whether the image(s) has been shared widely and via what services and/or platforms (this may be unknown)
- › Whether immediate action should be taken to delete or remove images or videos from devices or online services
- › Any relevant facts about the Students involved which would influence risk assessment
- › If there is a need to contact another school, college, setting or individual
- › Whether to contact parents or carers of the Students involved (in most cases parents/carers should be involved)

The DSL will make an immediate referral to police and/or children's social care if:

- › The incident involves an adult
- › There is reason to believe that a young person has been coerced, blackmailed or groomed, or if there are concerns about their capacity to consent (for example, owing to special educational needs)
- › What the DSL knows about the images or videos suggests the content depicts sexual acts which are unusual for the young person's developmental stage, or are violent
- › The imagery involves sexual acts and any pupil in the images or videos is under 13
- › The DSL has reason to believe a pupil is at immediate risk of harm owing to the sharing of nudes and semi-nudes (for example, the young person is presenting as suicidal or self-harming)

If none of the above apply then the DSL, in consultation with the headteacher and other members of staff as appropriate, may decide to respond to the incident without involving the police or children's social care. The decision will be made and recorded in line with the procedures set out in this policy.

#### **Further review by the DSL**

If at the initial review stage, a decision has been made not to refer to police and/or children's social care, the DSL will conduct a further review to establish the facts and assess the risks.

They will hold interviews with the Students involved (if appropriate).

If at any point in the process there is a concern that a pupil has been harmed or is at risk of harm, a referral will be made to children's social care and/or the police immediately.

#### **Informing parents/carers**

The DSL will inform parents/carers at an early stage and keep them involved in the process, unless there is a good reason to believe that involving them would put the pupil at risk of harm.

#### **Referring to the police**

If it is necessary to refer an incident to the police, this will be done through a safer schools officer.

#### **Recording incidents**

All incidents of sharing of nudes and semi-nudes, and the decisions made in responding to them, will be recorded. The record-keeping arrangements set out in section 14 of this policy also apply to recording these incidents.

#### **Curriculum coverage**

Students are taught about the issues surrounding the sharing of nudes and semi-nudes as part of our Relevance Curriculum. Teaching covers the following in relation to the sharing of nudes and semi-nudes:

- › What it is
- › How it is most likely to be encountered
- › The consequences of requesting, forwarding or providing such images, including when it is and is not abusive and when it may be deemed as online sexual harassment
- › Issues of legality
- › The risk of damage to people's feelings and reputation

Students also learn the strategies and skills needed to manage:

- › Specific requests or pressure to provide (or forward) such images
- › The receipt of such images

This policy on the sharing of nudes and semi-nudes is also shared with Students and parents/carers within our behaviour and exclusions policy so they are aware of the processes the school will follow in the event of an incident.

### 7.10 Reporting systems for our Students

Where there is a safeguarding concern, we will take the child's wishes and feelings into account when determining what action to take and what services to provide.

We recognise the importance of ensuring Students feel safe and comfortable to come forward and report any concerns and/or allegations.

To achieve this, we will:

- › Put systems in place for Students to confidently report abuse. These include publicity around the pastoral office, the SHARP system for anonymous reporting, trusted adults in school and the names DSL
- › Ensure our reporting systems are well promoted, easily understood and easily accessible for Students. Each form room is expected to signpost the SHARP system, the Relevance Curriculum promotes how to report concerns and every form tutor is a first point of contact for students on a daily basis.
- › Make it clear to Students that their concerns will be taken seriously, and that they can safely express their views and give feedback. Our ethos promotes a safe and supportive approach to all dealings with students. Pastoral staff have undergone training in how to handle disclosures for example.

### 8. Online safety and the use of mobile technology

We recognise the importance of safeguarding children from potentially harmful and inappropriate online material, and we understand that technology is a significant component in many safeguarding and wellbeing issues.

To address this, our school aims to:

- › Have robust processes in place to ensure the online safety of Students, staff, volunteers and governors
- › Protect and educate the whole school community in its safe and responsible use of technology, including mobile and smart technology (which we refer to as 'mobile phones')
- › Set clear guidelines for the use of mobile phones for the whole school community
- › Establish clear mechanisms to identify, intervene in and escalate any incidents or concerns, where appropriate

### The 4 key categories of risk

Our approach to online safety is based on addressing the following categories of risk:

- › **Content** – being exposed to illegal, inappropriate or harmful content, such as pornography, fake news, racism, misogyny, self-harm, suicide, antisemitism, radicalisation and extremism
- › **Contact** – being subjected to harmful online interaction with other users, such as peer-to-peer pressure, commercial advertising and adults posing as children or young adults with the intention to groom or exploit them for sexual, criminal, financial or other purposes
- › **Conduct** – personal online behaviour that increases the likelihood of, or causes, harm, such as making, sending and receiving explicit images (e.g. consensual and non-consensual sharing of nudes and semi-nudes and/or pornography), sharing other explicit images and online bullying; and
- › **Commerce** – risks such as online gambling, inappropriate advertising, phishing and/or financial scams

**To meet our aims and address the risks above we will:**

- › Educate Students about online safety as part of our curriculum. For example:
  - The safe use of social media, the internet and technology



- Keeping personal information private
- How to recognise unacceptable behaviour online
- How to report any incidents of cyber-bullying, ensuring Students are encouraged to do so, including where they are a witness rather than a victim
- › Train staff, as part of their induction, on safe internet use and online safeguarding issues including cyber-bullying and the risks of online radicalisation. All staff members will receive refresher training at least once each academic year
- › Educate parents/carers about online safety via our website, communications sent directly to them and during parents' evenings. We will also share clear procedures with them so they know how to raise concerns about online safety
- › Make sure staff are aware of any restrictions placed on them with regards to the use of their mobile phone and cameras, for example that:
  - Staff are allowed to bring their personal phones to school for their own use, but will limit such use to non-contact time when Students are not present
  - Staff will not take pictures or recordings of Students on their personal phones or cameras
  - Ensure that every member of staff receives the staff code of conduct as part of induction (appendix 7)
- › Make all Students, parents/carers, staff, volunteers and governors aware that they are expected to sign an agreement regarding the acceptable use of the internet in school, use of the school's ICT systems and use of their mobile and smart technology
- › Explain the sanctions we will use if a pupil is in breach of our policies on the acceptable use of the internet and mobile phones
- › Make sure all staff, Students and parents/carers are aware that staff have the power to search Students' phones, as set out in the [DfE's guidance on searching, screening and confiscation](#)
- › Put in place robust filtering and monitoring systems to limit children's exposure to the 4 key categories of risk (described above) from the school's IT systems
- › Carry out an annual review of our approach to online safety, supported by an annual risk assessment that considers and reflects the risks faced by our school community

This section summarises our approach to online safety. For comprehensive details about our school's policy on online safety, please refer to our online safety policy which you can find on our website [https://knoleacademynew.s3.amazonaws.com/uploads/key\\_information/Online-Safety-Policy-2021.pdf?t=1663175872](https://knoleacademynew.s3.amazonaws.com/uploads/key_information/Online-Safety-Policy-2021.pdf?t=1663175872)

## 9. Notifying parents or carers

Where appropriate, we will discuss any concerns about a child with the child's parents or carers. The DSL will normally do this in the event of a suspicion or disclosure.

Other staff will only talk to parents or carers about any such concerns following consultation with the DSL.

If we believe that notifying the parents or carers would increase the risk to the child, we will discuss this with the local authority children's social care team before doing so.

In the case of allegations of abuse made against other children, we will normally notify the parents or carers of all the children involved. We will think carefully about what information we provide about the other child involved, and when. We will work with the police and/or local authority children's social care to make sure our approach to information sharing is consistent.

The DSL will, along with any relevant agencies (this will be decided on a case-by-case basis):

- › Meet with the victim's parents or carers, with the victim, to discuss what's being put in place to safeguard them, and understand their wishes in terms of what support they may need and how the report will be progressed
- › Meet with the alleged perpetrator's parents or carers to discuss support for them, and what's being put in place that will impact them, e.g. moving them out of classes with the victim, and the reason(s) behind any decision(s)

## **10. Students with special educational needs, disabilities or health issues**

We recognise that Students with special educational needs (SEN) or disabilities or certain health conditions can face additional safeguarding challenges and are three times more likely to be abused than their peers. Additional barriers can exist when recognising abuse and neglect in this group, including:

- › Assumptions that indicators of possible abuse such as behaviour, mood and injury relate to the child's condition without further exploration
- › Students being more prone to peer group isolation or bullying (including prejudice-based bullying) than other Students
- › The potential for Students with SEN, disabilities or certain health conditions being disproportionately impacted by behaviours such as bullying, without outwardly showing any signs
- › Communication barriers and difficulties in managing or reporting these challenges

We offer extra pastoral support for these Students. This includes AEN drop-ins, surgeries and safe spaces with LSA and specialist support.

Any abuse involving Students with SEND will require close liaison with the DSL (or deputy) and the SENCO.

## **11. Students with a social worker**

Students may need a social worker due to safeguarding or welfare needs. We recognise that a child's experiences of adversity and trauma can leave them vulnerable to further harm as well as potentially creating barriers to attendance, learning, behaviour and mental health.

The DSL and all members of staff will work with and support social workers to help protect vulnerable children.

Where we are aware that a pupil has a social worker, the DSL will always consider this fact to ensure any decisions are made in the best interests of the pupil's safety, welfare and educational outcomes. For example, it will inform decisions about:

- › Responding to unauthorised absence or missing education where there are known safeguarding risks
- › The provision of pastoral and/or academic support

## **12. Looked-after and previously looked-after children**

We will ensure that staff have the skills, knowledge and understanding to keep looked-after children and previously looked-after children safe. In particular, we will ensure that:

- › Appropriate staff have relevant information about children's looked after legal status, contact arrangements with birth parents or those with parental responsibility, and care arrangements
- › The DSL has details of children's social workers and relevant virtual school heads

We have appointed a designated teacher, Angela Righelato (SENCO and DDSL), who is responsible for promoting the educational achievement of looked-after children and previously looked-after children in line with [statutory guidance](#).

The designated teacher is appropriately trained and has the relevant qualifications and experience to perform the role.

As part of their role, the designated teacher will:

- › Work closely with the DSL to ensure that any safeguarding concerns regarding looked-after and previously looked-after children are quickly and effectively responded to
- › Work with virtual school heads to promote the educational achievement of looked-after and previously looked-after children, including discussing how pupil premium plus funding can be best used to support looked-after children and meet the needs identified in their personal education plans

### **13. Complaints and concerns about school safeguarding policies**

#### **13.1 Complaints against staff**

Complaints against staff that are likely to require a child protection investigation will be handled in accordance with our procedures for dealing with allegations of abuse made against staff (see appendix 4).

#### **13.2 Other complaints**

Safeguarding-related complaints of other types will be investigated by the DSL.

#### **13.3 Whistle-blowing**

Our whistle-blowing policy covers concerns regarding the way the school safeguards students – including poor or unsafe practice, or potential failures. This is given to every member of staff as an essential read for induction.

### **14. Record-keeping**

We will hold records in line with our records retention schedule.

All safeguarding concerns, discussions, decisions made and the reasons for those decisions, must be recorded in writing on Edukey. If you are in any doubt about whether to record something, discuss it with the DSL. Non-confidential records will be easily accessible and available. Confidential information and records will be held securely and only available to those who have a right or professional need to see them. Records will include:

- › A clear and comprehensive summary of the concern
- › Details of how the concern was followed up and resolved
- › A note of any action taken, decisions reached and the outcome

Safeguarding records relating to individual children will be retained for date of birth of the child +25 years, then reviewed by the DSL. They are then securely disposed of.

Safeguarding records which contain information about allegations of sexual abuse will be retained for the Independent Inquiry into Child Sexual Abuse (IICSA), for the term of the inquiry.

If a child for whom the school has, or has had, safeguarding concerns moves to another school, the DSL will ensure that their child protection file is forwarded promptly and securely, and separately from the main student file. To allow the new school/college to have support in place when the child arrives, this should be within:

- › **5 days** for an in-year transfer, or within
- › **The first 5 days** of the start of a new term

In addition, if the concerns are significant or complex, and/or social services are involved, the DSL will speak to the DSL of the receiving school and provide information to enable them to have time to make any necessary preparations to ensure the safety of the child.

Records of Safeguarding concerns are held electronically on Edukey and a notification flag is held in the student's main paper file if applicable. A paper safeguarding file is held for students who are or have been on a child protection plan, Child in Need, looked after or early help. These are kept in a locked filing cabinet in the DSL's office.

Cases involving an allegation against a staff member are held in a paper file in a locked filing cabinet in the DSL's office.

These paper files can only be viewed by the DSL or deputies and are sent securely, with a receipt for return, if the student moves to another school. Otherwise, the records are held in line with the main student records.

Section 6 of this policy explains how Knole Academy shares information with other agencies and when this is appropriate.

In addition:

- › Our policy on record-keeping specifically with respect to recruitment and pre-employment checks can be found in the safer recruitment policy.
- › Our policy on record-keeping with respect to allegations of abuse made against staff can be found in the managing allegations against staff policy.
- › Appendix 4 sets out our policy on record-keeping specifically with respect to recruitment and pre-appointment checks
- › Appendix 5 sets out our policy on record-keeping with respect to allegations of abuse made against staff

## **15. Training**

### **15.1 All staff**

All staff members will undertake safeguarding and child protection training at induction, including on whistle-blowing procedures and online safety, to ensure they understand the school's safeguarding systems and their responsibilities, and can identify signs of possible abuse or neglect.

This training will be regularly updated and will:

- › Be integrated, aligned and considered as part of the whole-school safeguarding approach and wider staff training, and curriculum planning
- › Be in line with advice from the 3 safeguarding partners
- › Have regard to the Teachers' Standards to support the expectation that all teachers:
  - Manage behaviour effectively to ensure a good and safe environment
  - Have a clear understanding of the needs of all Students

All staff will have training on the government's anti-radicalisation strategy, Prevent, to enable them to identify children at risk of being drawn into terrorism and to challenge extremist ideas.

Staff will also receive regular safeguarding and child protection updates, including on online safety, as required but at least annually (for example, through emails, e-bulletins and staff meetings).

Contractors who are provided through a private finance initiative (PFI) or similar contract will also receive safeguarding training.

Volunteers will receive appropriate training, if applicable.

### **15.2 The DSL and DDSL's**

The DSL and DDSL's will undertake child protection and safeguarding training at least every 2 years.

In addition, they will update their knowledge and skills at regular intervals and at least annually (for example, through e-bulletins, meeting other DSLs, or taking time to read and digest safeguarding developments).

They will also undertake Prevent awareness training.

### **15.3 Governors**

All governors receive training about safeguarding and child protection (including online safety) at induction, which is regularly updated. This is to make sure that they:

- › Have the knowledge and information needed to perform their functions and understand their responsibilities, such as providing strategic challenge
- › Can be assured those safeguarding policies and procedures are effective and support the school to deliver a robust whole-school approach to safeguarding

As the chair of governors may be required to act as the ‘case manager’ in the event that an allegation of abuse is made against the headteacher, they receive training in managing allegations for this purpose.

#### 15.4 Recruitment – interview panels

At least 1 person conducting any interview for any post at the school will have undertaken safer recruitment training. This will cover, as a minimum, the contents of Keeping Children Safe in Education, and will be in line with local safeguarding procedures.

See appendix 3 of this policy for more information about our safer recruitment procedures.

#### 15.5 Staff who have contact with Students and families

All staff who have contact with children and families will have supervisions which will provide them with support, coaching and training, promote the interests of children and allow for confidential discussions of sensitive issues.

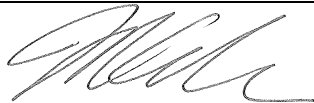

#### 16. Monitoring arrangements

This policy will be reviewed **annually** by the DSL. At every review, it will be approved by the full governing board.

#### 17. Links with other policies

This policy links to the following policies and procedures:

- |  |                                      |
|--|--------------------------------------|
| › Behaviour                              | › First aid                          |
| › Staff code of conduct                  | › Curriculum                         |
| › Complaints                             | › Privacy                            |
| › Health and safety                      | › Whistleblowing                     |
| › Attendance                             | › Data protection                    |
| › IT Acceptable Use – staff and students | › Safer recruitment                  |
| › Home-School agreement                  | › Managing allegations against staff |
| › Equality and diversity                 | › Access to Academy records          |
| › Sex and relationship education         | › Online Safety                      |

APPROVED	Ratified by the Full Governing Body on 30.09.22		
STATUTORY POLICY	Annually updated or more frequently to reflect revisions to eg to DfE Guidance		
SIGNED HEADTEACHER		PRINT NAME	Mr D Collins
SIGNED CHAIR OF GOVERNORS		PRINT NAME	Miss T Homewood

Appendix 1: Kent Education Safeguarding Contacts as of September 2022

## Education Safeguarding Service Contacts

<b>Head Office: Room 2.30 Sessions House, County Hall, Maidstone ME14 1XQ</b>	
<b>Claire Ray</b> Head of Service	<b>03301 651 200</b>
<b>Rebecca Avery</b> Training & Development Manager	<b>03301 651 110</b>
<b>Robin Brivio</b> Senior Safeguarding Advisor	<b>03301 651 200</b>
<b>Online Safety</b>	<b>03301 651 500</b>
<p><b>For advice on safeguarding issues please call your area office on the numbers listed below.</b></p> <p><b>If a child may be at risk of imminent harm, you should call the Integrated Front Door on 03000 411 111 or the Police on 999</b></p>	
<b>Ashford</b>	<b>03301 651 340</b>
<b>Canterbury</b>	<b>03301 651 140</b>
<b>Dartford</b>	<b>03301 651 240</b>
<b>Dover</b>	<b>03301 651 340</b>
<b>Folkestone &amp; Hythe</b>	<b>03301 651 340</b>
<b>Gravesham</b>	<b>03301 651 240</b>
<b>Maidstone</b>	<b>03301 651 440</b>
<b>Sevenoaks</b>	<b>03301 651 240</b>
<b>Swale</b>	<b>03301 651 140</b>
<b>Thanet</b>	<b>03301 651 140</b>
<b>Tonbridge &amp; Malling</b>	<b>03301 651 440</b>
<b>Tunbridge Wells</b>	<b>03301 651 440</b>

## Kent County Council Key Contacts

**Integrated Front Door: 03000 411 111** (outside office hours **03000 419 191**)

**Early Help Contacts** (district teams) can be found on [www.kelsi.org.uk](http://www.kelsi.org.uk)

**LADO Team contact number: 03000 410 888**

**If your call is urgent i.e. a child is in **immediate danger** and you cannot be connected to the team, call the Integrated Front Door on  
03000 411 111**

**Email: [kentchildrenslado@kent.gov.uk](mailto:kentchildrenslado@kent.gov.uk)**

**Kroner House, Eurogate Business Park, Ashford, Kent, TN24 8XU**

### **Area Education Officers**

**South Kent** – David Adams 03000 412 309

**East Kent** – Marisa White 03000 418 794

**West Kent** – Nick Abrahams 03000 410 058

**North Kent** – Ian Watts 03000 414 302

### **Prevent Education Officers**

**North/West/ Medway** - Sally Green [sally.green2@kent.gov.uk](mailto:sally.green2@kent.gov.uk) 03000 413 439

**South/East** - Jill Allen [jill.allen@kent.gov.uk](mailto:jill.allen@kent.gov.uk) 03000 413 565



## Appendix 2: Types of Abuse

**These appendices are based on the Department for Education's statutory guidance, Keeping Children Safe in Education.**

**Abuse**, including neglect, and safeguarding issues are rarely standalone events that can be covered by 1 definition or label. In most cases, multiple issues will overlap.

**Physical abuse** may involve hitting, shaking, throwing, poisoning, burning or scalding, drowning, suffocating or otherwise causing physical harm to a child. Physical harm may also be caused when a parent or carer fabricates the symptoms of, or deliberately induces, illness in a child.

**Emotional abuse** is the persistent emotional maltreatment of a child such as to cause severe and adverse effects on the child's emotional development. Some level of emotional abuse is involved in all types of maltreatment of a child, although it may occur alone.

Emotional abuse may involve:

- › Conveying to a child that they are worthless or unloved, inadequate, or valued only insofar as they meet the needs of another person
- › Not giving the child opportunities to express their views, deliberately silencing them or 'making fun' of what they say or how they communicate
- › Age or developmentally inappropriate expectations being imposed on children. These may include interactions that are beyond a child's developmental capability, as well as overprotection and limitation of exploration and learning, or preventing the child participating in normal social interaction
- › Seeing or hearing the ill-treatment of another
- › Serious bullying (including cyber-bullying), causing children frequently to feel frightened or in danger, or the exploitation or corruption of children

**Sexual abuse** involves forcing or enticing a child or young person to take part in sexual activities, not necessarily involving a high level of violence, whether or not the child is aware of what is happening. The activities may involve:

- › Physical contact, including assault by penetration (for example, rape or oral sex) or non-penetrative acts such as masturbation, kissing, rubbing and touching outside of clothing
- › Non-contact activities, such as involving children in looking at, or in the production of, sexual images, watching sexual activities, encouraging children to behave in sexually inappropriate ways, or grooming a child in preparation for abuse (including via the internet)

Sexual abuse is not solely perpetrated by adult males. Women can also commit acts of sexual abuse, as can other children.

**Neglect** is the persistent failure to meet a child's basic physical and/or psychological needs, likely to result in the serious impairment of the child's health or development. Neglect may occur during pregnancy as a result of maternal substance abuse.

Once a child is born, neglect may involve a parent or carer failing to:

- › Provide adequate food, clothing and shelter (including exclusion from home or abandonment)
- › Protect a child from physical and emotional harm or danger
- › Ensure adequate supervision (including the use of inadequate care-givers)
- › Ensure access to appropriate medical care or treatment

It may also include neglect of, or unresponsiveness to, a child's basic emotional needs.



## **Appendix 3: safer recruitment and DBS checks – policy and procedures**

### **Recruitment and selection process**

To make sure we recruit suitable people, we will ensure that those involved in the recruitment and employment of staff to work with children have received appropriate safer recruitment training.

We have put the following steps in place during our recruitment and selection process to ensure we are committed to safeguarding and promoting the welfare of children.

### **Advertising**

When advertising roles, we will make clear:

- › Our school's commitment to safeguarding and promoting the welfare of children
- › That safeguarding checks will be undertaken
- › The safeguarding requirements and responsibilities of the role, such as the extent to which the role will involve contact with children
- › Whether or not the role is exempt from the Rehabilitation of Offenders Act 1974 and the amendments to the Exceptions Order 1975, 2013 and 2020. If the role is exempt, certain spent convictions and cautions are 'protected', so they do not need to be disclosed, and if they are disclosed, we cannot take them into account

### **Application forms**

Our application forms will:

- › Include a statement saying that it is an offence to apply for the role if an applicant is barred from engaging in regulated activity relevant to children (where the role involves this type of regulated activity)
- › Include a copy of, or link to, our child protection and safeguarding policy and our policy on the employment of ex-offenders

### **Shortlisting**

Our shortlisting process will involve at least 2 people and will:

- › Consider any inconsistencies and look for gaps in employment and reasons given for them
- › Explore all potential concerns

Once we have shortlisted candidates, we will ask shortlisted candidates to:

- › Complete a self-declaration of their criminal record or any information that would make them unsuitable to work with children, so that they have the opportunity to share relevant information and discuss it at interview stage. The information we will ask for includes:
  - If they have a criminal history
  - Whether they are included on the barred list
  - Whether they are prohibited from teaching
  - Information about any criminal offences committed in any country in line with the law as applicable in England and Wales
  - Any relevant overseas information
- › Sign a declaration confirming the information they have provided is true

We will also consider carrying out an online search on shortlisted candidates to help identify any incidents or issues that are publicly available online.

### **Seeking references and checking employment history**

We will obtain references before interview. Any concerns raised will be explored further with referees and taken up with the candidate at interview.

When seeking references, we will:

- › Not accept open references
- › Liaise directly with referees and verify any information contained within references with the referees
- › Ensure any references are from the candidate's current employer and completed by a senior person. Where the referee is school based, we will ask for the reference to be confirmed by the headteacher/principal as accurate in respect to disciplinary investigations
- › Obtain verification of the candidate's most recent relevant period of employment if they are not currently employed
- › Secure a reference from the relevant employer from the last time the candidate worked with children if they are not currently working with children
- › Compare the information on the application form with that in the reference and take up any inconsistencies with the candidate
- › Resolve any concerns before any appointment is confirmed

### **Interview and selection**

When interviewing candidates, we will:

- › Probe any gaps in employment, or where the candidate has changed employment or location frequently, and ask candidates to explain this
- › Explore any potential areas of concern to determine the candidate's suitability to work with children
- › Record all information considered and decisions made

### **Pre-appointment vetting checks**

We will record all information on the checks carried out in the school's single central record (SCR). Copies of these checks, where appropriate, will be held in individuals' personnel files. We follow requirements and best practice in retaining copies of these checks, as set out below.

### **New staff**

All offers of appointment will be conditional until satisfactory completion of the necessary pre-employment checks. When appointing new staff, we will:

- › Verify their identity
- › Obtain (via the applicant) an enhanced DBS certificate, including barred list information for those who will be engaging in regulated activity (see definition below). We will obtain the certificate before, or as soon as practicable after, appointment, including when using the DBS update service. We will not keep a copy of the certificate for longer than 6 months, but when the copy is destroyed we may still keep a record of the fact that vetting took place, the result of the check and recruitment decision taken
- › Obtain a separate barred list check if they will start work in regulated activity before the DBS certificate is available
- › Verify their mental and physical fitness to carry out their work responsibilities
- › Verify their right to work in the UK. We will keep a copy of this verification for the duration of the member of staff's employment and for 2 years afterwards
- › Verify their professional qualifications, as appropriate
- › Ensure they are not subject to a prohibition order if they are employed to be a teacher

- › Carry out further additional checks, as appropriate, on candidates who have lived or worked outside of the UK. These could include, where available:
  - For all staff, including teaching positions: [criminal records checks for overseas applicants](#)
  - For teaching positions: obtaining a letter from the professional regulating authority in the country where the applicant has worked, confirming that they have not imposed any sanctions or restrictions on that person, and/or are aware of any reason why that person may be unsuitable to teach
  - Check that candidates taking up a management position\* are not subject to a prohibition from management (section 128) direction made by the secretary of state

\* Management positions are most likely to include, but are not limited to, headteachers, principals and deputy/assistant headteachers.

**Regulated activity** means a person who will be:

- › Responsible, on a regular basis in a school or college, for teaching, training, instructing, caring for or supervising children; or
- › Carrying out paid, or unsupervised unpaid, work regularly in a school or college where that work provides an opportunity for contact with children; or
- › Engaging in intimate or personal care or overnight activity, even if this happens only once and regardless of whether they are supervised or not

### **Existing staff**

In certain circumstances we will carry out all the relevant checks on existing staff as if the individual was a new member of staff. These circumstances are when:

- › There are concerns about an existing member of staff's suitability to work with children; or
- › An individual moves from a post that is not regulated activity to one that is; or
- › There has been a break in service of 12 weeks or more

We will refer to the DBS anyone who has harmed, or poses a risk of harm, to a child or vulnerable adult where:

- › We believe the individual has engaged in [relevant conduct](#); or
- › We believe the individual has received a caution or conviction for a relevant (automatic barring either with or without the right to make representations) offence, under the [Safeguarding Vulnerable Groups Act 2006 \(Prescribed Criteria and Miscellaneous Provisions\) Regulations 2009](#); or
- › We believe the 'harm test' is satisfied in respect of the individual (i.e. they may harm a child or vulnerable adult or put them at risk of harm); and
- › The individual has been removed from working in regulated activity (paid or unpaid) or would have been removed if they had not left

### **Agency and third-party staff**

We will obtain written notification from any agency or third-party organisation that it has carried out the necessary safer recruitment checks that we would otherwise perform. We will also check that the person presenting themselves for work is the same person on whom the checks have been made.

### **Contractors**

We will ensure that any contractor, or any employee of the contractor, who is to work at the school has had the appropriate level of DBS check (this includes contractors who are provided through a PFI or similar contract). This will be:

- › An enhanced DBS check with barred list information for contractors engaging in regulated activity
- › An enhanced DBS check, not including barred list information, for all other contractors who are not in regulated activity but whose work provides them with an opportunity for regular contact with children

We will obtain the DBS check for self-employed contractors.

We will not keep copies of such checks for longer than 6 months.

Contractors who have not had any checks will not be allowed to work unsupervised or engage in regulated activity under any circumstances.

We will check the identity of all contractors and their staff on arrival at the school.

### **Trainee/student teachers**

Where applicants for initial teacher training are salaried by us, we will ensure that all necessary checks are carried out.

Where trainee teachers are fee-funded, we will obtain written confirmation from the training provider that necessary checks have been carried out and that the trainee has been judged by the provider to be suitable to work with children.

### **Volunteers**

We will:

- › Never leave an unchecked volunteer unsupervised or allow them to work in regulated activity
- › Obtain an enhanced DBS check with barred list information for all volunteers who are new to working in regulated activity
- › Carry out a risk assessment when deciding whether to seek an enhanced DBS check without barred list information for any volunteers not engaging in regulated activity. We will retain a record of this risk assessment

### **Governors and members**

All trustees, local governors and members will have an enhanced DBS check without barred list information.

They will have an enhanced DBS check with barred list information if working in regulated activity.

All governors will also have a section 128 check (as a section 128 direction disqualifies an individual from being a maintained school governor).

The chair of the board will have their DBS check countersigned by the secretary of state.

All proprietors, trustees, local governors and members will also have the following checks:

- › A section 128 check (to check prohibition on participation in management under [section 128 of the Education and Skills Act 2008](#)).
- › Identity
- › Right to work in the UK
- › Other checks deemed necessary if they have lived or worked outside the UK

### **Staff working in alternative provision settings**

Where we place a pupil with an alternative provision provider, we obtain written confirmation from the provider that they have carried out the appropriate safeguarding checks on individuals working there that we would otherwise perform.

**Adults who supervise Students on work experience**

When organising work experience, we will ensure that policies and procedures are in place to protect children from harm.

We will also consider whether it is necessary for barred list checks to be carried out on the individuals who supervise a pupil under 16 on work experience. This will depend on the specific circumstances of the work experience, including the nature of the supervision, the frequency of the activity being supervised, and whether the work is regulated activity.

## Appendix 4: Allegations of abuse made against staff

### Section 1: allegations that may meet the harms threshold

This section applies to all cases in which it is alleged that a current member of staff, including a supply teacher, volunteer or contractor, has:

- › Behaved in a way that has harmed a child, or may have harmed a child, and/or
- › Possibly committed a criminal offence against or related to a child, and/or
- › Behaved towards a child or children in a way that indicates they may pose a risk of harm to children, and/or
- › Behaved or may have behaved in a way that indicates they may not be suitable to work with children – this includes behaviour taking place both inside and outside of school

If we're in any doubt as to whether a concern meets the harm threshold, we will consult our local authority designated officer (LADO).

We will deal with any allegation of abuse quickly, in a fair and consistent way that provides effective child protection while also supporting the individual who is the subject of the allegation.

A 'case manager' will lead any investigation. This will be the headteacher, or the chair of governors if the headteacher is the subject of the allegation. The case manager will be identified at the earliest opportunity.

Our procedures for dealing with allegations will be applied with common sense and judgement.

### Suspension of the accused until the case is resolved

Suspension of the accused will not be the default position and will only be considered in cases where there is reason to suspect that a child or other children is/are at risk of harm, or the case is so serious that there might be grounds for dismissal. In such cases, we will only suspend an individual if we have considered all other options available and there is no reasonable alternative.

Based on an assessment of risk, we will consider alternatives such as:

- › Redeployment within the school so that the individual does not have direct contact with the child or children concerned
- › Providing an assistant to be present when the individual has contact with children
- › Redeploying the individual to alternative work in the school so that they do not have unsupervised access to children
- › Moving the child or children to classes where they will not come into contact with the individual, making it clear that this is not a punishment and parents/carers have been consulted
- › Temporarily redeploying the individual to another role in a different location, for example to an alternative school or other work for the local authority

If in doubt, the case manager will seek views from the school's personnel adviser and the designated officer at the local authority, as well as the police and children's social care where they have been involved.

### Definitions for outcomes of allegation investigations

- › **Substantiated:** there is sufficient evidence to prove the allegation
- › **Malicious:** there is sufficient evidence to disprove the allegation and there has been a deliberate act to deceive, or to cause harm to the subject of the allegation
- › **False:** there is sufficient evidence to disprove the allegation
- › **Unsubstantiated:** there is insufficient evidence to either prove or disprove the allegation (this does not imply guilt or innocence)

- › **Unfounded:** to reflect cases where there is no evidence or proper basis which supports the allegation being made

### Procedure for dealing with allegations

In the event of an allegation that meets the criteria above, the case manager will take the following steps:

- › Conduct basic enquiries in line with local procedures to establish the facts to help determine whether there is any foundation to the allegation before carrying on with the steps below
- › Discuss the allegation with the designated officer at the local authority. This is to consider the nature, content and context of the allegation and agree a course of action, including whether further enquiries are necessary to enable a decision on how to proceed, and whether it is necessary to involve the police and/or children's social care services. (The case manager may, on occasion, consider it necessary to involve the police *before* consulting the designated officer – for example, if the accused individual is deemed to be an immediate risk to children or there is evidence of a possible criminal offence. In such cases, the case manager will notify the designated officer as soon as practicably possible after contacting the police)
- › Inform the accused individual of the concerns or allegations and likely course of action as soon as possible after speaking to the designated officer (and the police or children's social care services, where necessary). Where the police and/or children's social care services are involved, the case manager will only share such information with the individual as has been agreed with those agencies
- › Where appropriate (in the circumstances described above), carefully consider whether suspension of the individual from contact with children at the school is justified or whether alternative arrangements such as those outlined above can be put in place. Advice will be sought from the designated officer, police and/or children's social care services, as appropriate
- › Where the case manager is concerned about the welfare of other children in the community or the individual's family, they will discuss these concerns with the DSL and make a risk assessment of the situation. If necessary, the DSL may make a referral to children's social care
- › **If immediate suspension is considered necessary**, agree and record the rationale for this with the designated officer. The record will include information about the alternatives to suspension that have been considered, and why they were rejected. Written confirmation of the suspension will be provided to the individual facing the allegation or concern within 1 working day, and the individual will be given a named contact at the school and their contact details
- › **If it is decided that no further action is to be taken** in regard to the subject of the allegation or concern, record this decision and the justification for it and agree with the designated officer what information should be put in writing to the individual and by whom, as well as what action should follow both in respect of the individual and those who made the initial allegation
- › **If it is decided that further action is needed**, take steps as agreed with the designated officer to initiate the appropriate action in school and/or liaise with the police and/or children's social care services as appropriate
- › Provide effective support for the individual facing the allegation or concern, including appointing a named representative to keep them informed of the progress of the case and considering what other support is appropriate. Support available includes trade union representatives, or a colleague, for example.
- › Inform the parents or carers of the child/children involved about the allegation as soon as possible if they do not already know (following agreement with children's social care services and/or the police, if applicable). The case manager will also inform the parents or carers of the requirement to maintain confidentiality about any allegations made against teachers (where this applies) while investigations are ongoing. Any parent or carer who wishes to have the confidentiality restrictions removed in respect of a teacher will be advised to seek legal advice

- › Keep the parents or carers of the child/children involved informed of the progress of the case (only in relation to their child – no information will be shared regarding the staff member)
- › Make a referral to the DBS where it is thought that the individual facing the allegation or concern has engaged in conduct that harmed or is likely to harm a child, or if the individual otherwise poses a risk of harm to a child

If the school is made aware that the secretary of state has made an interim prohibition order in respect of an individual, we will immediately suspend that individual from teaching, pending the findings of the investigation by the Teaching Regulation Agency.

Where the police are involved, wherever possible the school will ask the police at the start of the investigation to obtain consent from the individuals involved to share their statements and evidence for use in the school's disciplinary process, should this be required at a later point.

### **Additional considerations for supply teachers and all contracted staff**

If there are concerns or an allegation is made against someone not directly employed by the school, such as a supply teacher or contracted staff member provided by an agency, we will take the actions below in addition to our standard procedures.

- › We will not decide to stop using an individual due to safeguarding concerns without finding out the facts and liaising with our LADO to determine a suitable outcome
- › The governing body will discuss with the agency whether it is appropriate to suspend the individual, or redeploy them to another part of the school, while the school carries out the investigation
- › We will involve the agency fully, but the school will take the lead in collecting the necessary information and providing it to the LADO as required
- › We will address issues such as information sharing, to ensure any previous concerns or allegations known to the agency are taken into account (we will do this, for example, as part of the allegations management meeting or by liaising directly with the agency where necessary)

When using an agency, we will inform them of our process for managing allegations, and keep them updated about our policies as necessary, and will invite the agency's HR manager or equivalent to meetings as appropriate.

### **Timescales**

We will deal with all allegations as quickly and effectively as possible and will endeavour to comply with the following timescales, where reasonably practicable:

- › Any cases where it is clear immediately that the allegation is unsubstantiated or malicious should be resolved within 1 week
- › If the nature of an allegation does not require formal disciplinary action, appropriate action should be taken within 3 working days
- › If a disciplinary hearing is required and can be held without further investigation, this should be held within 15 working days

However, these are objectives only and where they are not met, we will endeavour to take the required action as soon as possible thereafter.

### **Specific actions**

#### **Action following a criminal investigation or prosecution**

The case manager will discuss with the local authority's designated officer whether any further action, including disciplinary action, is appropriate and, if so, how to proceed, taking into account information provided by the police and/or children's social care services.

#### **Conclusion of a case where the allegation is substantiated**



If the allegation is substantiated and the individual is dismissed or the school ceases to use their services, or the individual resigns or otherwise ceases to provide their services, the school will make a referral to the DBS for consideration of whether inclusion on the barred lists is required.

If the individual concerned is a member of teaching staff, the school will consider whether to refer the matter to the Teaching Regulation Agency to consider prohibiting the individual from teaching.

### **Individuals returning to work after suspension**

If it is decided on the conclusion of a case that an individual who has been suspended can return to work, the case manager will consider how best to facilitate this.

The case manager will also consider how best to manage the individual's contact with the child or children who made the allegation, if they are still attending the school.

### **Unsubstantiated, unfounded, false or malicious reports**

If a report is:

- › Determined to be unsubstantiated, unfounded, false or malicious, the DSL will consider the appropriate next steps. If they consider that the child and/or person who made the allegation is in need of help, or the allegation may have been a cry for help, a referral to children's social care may be appropriate
- › Shown to be deliberately invented, or malicious, the school will consider whether any disciplinary action is appropriate against the individual(s) who made it

### **Unsubstantiated, unfounded, false or malicious allegations**

If an allegation is:

- › Determined to be unsubstantiated, unfounded, false or malicious, the LADO and case manager will consider the appropriate next steps. If they consider that the child and/or person who made the allegation is in need of help, or the allegation may have been a cry for help, a referral to children's social care may be appropriate
- › Shown to be deliberately invented, or malicious, the school will consider whether any disciplinary action is appropriate against the individual(s) who made it

### **Confidentiality and information sharing**

The school will make every effort to maintain confidentiality and guard against unwanted publicity while an allegation is being investigated or considered.

The case manager will take advice from the LADO, police and children's social care services, as appropriate, to agree:

- Who needs to know about the allegation and what information can be shared
- How to manage speculation, leaks and gossip, including how to make parents or carers of a child/children involved aware of their obligations with respect to confidentiality
- What, if any, information can be reasonably given to the wider community to reduce speculation
- How to manage press interest if, and when, it arises

### **Record-keeping**

The case manager will maintain clear records about any case where the allegation or concern meets the criteria above and store them on the individual's confidential personnel file for the duration of the case.

The records of any allegation that, following an investigation, is found to be malicious or false will be deleted from the individual's personnel file (unless the individual consents for the records to be retained on the file).

For all other allegations (which are not found to be malicious or false), the following information will be kept on the file of the individual concerned:

- A clear and comprehensive summary of the allegation
- Details of how the allegation was followed up and resolved
- Notes of any action taken, decisions reached and the outcome
- A declaration on whether the information will be referred to in any future reference

In these cases, the school will provide a copy to the individual, in agreement with children's social care or the police as appropriate.

Where records contain information about allegations of sexual abuse, we will preserve these for the Independent Inquiry into Child Sexual Abuse (IICSA), for the term of the inquiry. We will retain all other records at least until the individual has reached normal pension age, or for 10 years from the date of the allegation if that is longer.

## References

When providing employer references, we will:

- › Not refer to any allegation that has been found to be false, unfounded, unsubstantiated or malicious, or any repeated allegations which have all been found to be false, unfounded, unsubstantiated or malicious
- › Include substantiated allegations, provided that the information is factual and does not include opinions

## Learning lessons

After any cases where the allegations are *substantiated*, the case manager will review the circumstances of the case with the local authority's designated officer to determine whether there are any improvements that we can make to the school's procedures or practice to help prevent similar events in the future.

This will include consideration of (as applicable):

- Issues arising from the decision to suspend the member of staff
- The duration of the suspension
- Whether or not the suspension was justified
- The use of suspension when the individual is subsequently reinstated. We will consider how future investigations of a similar nature could be carried out without suspending the individual

For all other cases, the case manager will consider the facts and determine whether any improvements can be made.

## Non-recent allegations

Abuse can be reported, no matter how long ago it happened.

We will report any non-recent allegations made by a child to the LADO in line with our local authority's procedures for dealing with non-recent allegations.

Where an adult makes an allegation to the school that they were abused as a child, we will advise the individual to report the allegation to the police.

## Section 2: concerns that do not meet the harm threshold

This section applies to all concerns (including allegations) about members of staff, including supply teachers, volunteers and contractors, which do not meet the harm threshold set out in section 1 above.

Concerns may arise through, for example:

- › Suspicion
- › Complaint
- › Safeguarding concern or allegation from another member of staff
- › Disclosure made by a child, parent or other adult within or outside the school
- › Pre-employment vetting checks

We recognise the importance of responding to and dealing with any concerns in a timely manner to safeguard the welfare of children.

### **Definition of low-level concerns**

The term 'low-level' concern is any concern – no matter how small – that an adult working in or on behalf of the school may have acted in a way that:

- › Is inconsistent with the staff code of conduct, including inappropriate conduct outside of work, **and**
- › Does not meet the allegations threshold or is otherwise not considered serious enough to consider a referral to the designated officer at the local authority

Examples of such behaviour could include, but are not limited to:

- › Being overly friendly with children
- › Having favourites
- › Taking photographs of children on their mobile phone
- › Engaging with a child on a one-to-one basis in a secluded area or behind a closed door
- › Humiliating Students

### **Sharing low-level concerns**

We recognise the importance of creating a culture of openness, trust and transparency to encourage all staff to confidentially share low-level concerns so that they can be addressed appropriately.

We will create this culture by:

- › Ensuring staff are clear about what appropriate behaviour is, and are confident in distinguishing expected and appropriate behaviour from concerning, problematic or inappropriate behaviour, in themselves and others
- › Empowering staff to share any low-level concerns as per section 7.7 of this policy
- › Empowering staff to self-refer
- › Addressing unprofessional behaviour and supporting the individual to correct it at an early stage
- › Providing a responsive, sensitive and proportionate handling of such concerns when they are raised
- › Helping to identify any weakness in the school's safeguarding system

### **Responding to low-level concerns**

If the concern is raised via a third party, the headteacher will collect evidence where necessary by speaking:

- › Directly to the person who raised the concern, unless it has been raised anonymously
- › To the individual involved and any witnesses

The headteacher will use the information collected to categorise the type of behaviour and determine any further action, in line with the school's code of conduct. The headteacher will be the ultimate decision-maker in respect of all low-level concerns, though they may wish to collaborate with the DSL.

### **Record keeping**

All low-level concerns will be recorded in writing. In addition to details of the concern raised, records will include the context in which the concern arose, any action taken and the rationale for decisions and action taken.

Records will be:

- › Kept confidential, held securely and comply with the DPA 2018 and UK GDPR
- › Reviewed so that potential patterns of concerning, problematic or inappropriate behaviour can be identified. Where a pattern of such behaviour is identified, we will decide on a course of action, either through our disciplinary procedures or, where a pattern of behaviour moves from a concern to meeting the harms threshold as described in section 1 of this appendix, we will refer it to the designated officer at the local authority
- › Retained at least until the individual leaves employment at the school

Where a low-level concern relates to a supply teacher or contractor, we will notify the individual's employer, so any potential patterns of inappropriate behaviour can be identified.

### **References**

We will not include low-level concerns in references unless:

- › The concern (or group of concerns) has met the threshold for referral to the designated officer at the local authority and is found to be substantiated; and/or
- › The concern (or group of concerns) relates to issues which would ordinarily be included in a reference, such as misconduct or poor performance

## **Appendix 5: Specific Safeguarding Issues**

### **Children missing from education**

A child going missing from education, particularly repeatedly, can be a warning sign of a range of safeguarding issues. This might include abuse or neglect, such as sexual abuse or exploitation or child criminal exploitation, or issues such as mental health problems, substance abuse, radicalisation, FGM or forced marriage.

There are many circumstances where a child may become missing from education, but some children are particularly at risk. These include children who:

- › Are at risk of harm or neglect
- › Are at risk of forced marriage or FGM
- › Come from Gypsy, Roma, or Traveller families
- › Come from the families of service personnel
- › Go missing or run away from home or care
- › Are supervised by the youth justice system
- › Cease to attend a school
- › Come from new migrant families

We will follow our procedures for unauthorised absence and for dealing with children who go missing from education, particularly on repeat occasions, to help identify the risk of abuse and neglect, including sexual exploitation, and to help prevent the risks of going missing in future. This includes informing the local authority if a child leaves the school without a new school being named and adhering to requirements with respect to sharing information with the local authority, when applicable, when removing a child's name from the admission register at non-standard transition points.

Staff will be trained in signs to look out for and the individual triggers to be aware of when considering the risks of potential safeguarding concerns which may be related to being missing, such as travelling to conflict zones, FGM and forced marriage.

If a staff member suspects that a child is suffering from harm or neglect, we will follow local child protection procedures, including with respect to making reasonable enquiries. We will make an immediate referral to the local authority children's social care team, and the police, if the child is suffering or likely to suffer from harm, or in immediate danger.

### **Child criminal exploitation**

Child criminal exploitation (CCE) is a form of abuse where an individual or group takes advantage of an imbalance of power to coerce, control, manipulate or deceive a child into criminal activity, in exchange for something the victim needs or wants, and/or for the financial or other advantage of the perpetrator or facilitator, and/or through violence or the threat of violence.

The abuse can be perpetrated by males or females, and children or adults. It can be a one-off occurrence or a series of incidents over time and range from opportunistic to complex organised abuse.

The victim can be exploited even when the activity appears to be consensual. It does not always involve physical contact and can happen online. For example, young people may be forced to work in cannabis factories, coerced into moving drugs or money across the country (county lines), forced to shoplift or pickpocket, or to threaten other young people.

Indicators of CCE can include a child:

- › Appearing with unexplained gifts or new possessions
- › Associating with other young people involved in exploitation

- › Suffering from changes in emotional wellbeing
- › Misusing drugs and alcohol
- › Going missing for periods of time or regularly coming home late
- › Regularly missing school or education
- › Not taking part in education

If a member of staff suspects CCE, they will discuss this with the DSL. The DSL will trigger the local safeguarding procedures, including a referral to the local authority's children's social care team and the police, if appropriate.

### **Child sexual exploitation**

Child sexual exploitation (CSE) is a form of child sexual abuse where an individual or group takes advantage of an imbalance of power to coerce, manipulate or deceive a child into sexual activity, in exchange for something the victim needs or wants and/or for the financial advantage or increased status of the perpetrator or facilitator. It may, or may not, be accompanied by violence or threats of violence.

The abuse can be perpetrated by males or females, and children or adults. It can be a one-off occurrence or a series of incidents over time and range from opportunistic to complex organised abuse.

The victim can be exploited even when the activity appears to be consensual. Children or young people who are being sexually exploited may not understand that they are being abused. They often trust their abuser and may be tricked into believing they are in a loving, consensual relationship.

CSE can include both physical contact (penetrative and non-penetrative acts) and non-contact sexual activity. It can also happen online. For example, young people may be persuaded or forced to share sexually explicit images of themselves, have sexual conversations by text, or take part in sexual activities using a webcam. CSE may also occur without the victim's immediate knowledge, for example through others copying videos or images.

In addition to the CCE indicators above, indicators of CSE can include a child:

- › Having an older boyfriend or girlfriend
- › Suffering from sexually transmitted infections or becoming pregnant

If a member of staff suspects CSE, they will discuss this with the DSL. The DSL will trigger the local safeguarding procedures, including a referral to the local authority's children's social care team and the police, if appropriate.

### **Child-on-child abuse**

Child-on-child abuse is when children abuse other children. This type of abuse can take place inside and outside of school. It can also take place both face-to-face and online and can occur simultaneously between the 2.

Our school has a zero-tolerance approach to sexual violence and sexual harassment. We recognise that even if there are no reports, that doesn't mean that this kind of abuse isn't happening.

Child-on-child abuse is most likely to include, but may not be limited to:

- › Bullying (including cyber-bullying, prejudice-based and discriminatory bullying)
- › Abuse in intimate personal relationships between children (this is sometimes known as 'teenage relationship abuse')
- › Physical abuse such as hitting, kicking, shaking, biting, hair pulling, or otherwise causing physical harm (this may include an online element which facilitates, threatens and/or encourages physical abuse)

- › Sexual violence, such as rape, assault by penetration and sexual assault (this may include an online element which facilitates, threatens and/or encourages sexual violence)
- › Sexual harassment, such as sexual comments, remarks, jokes and online sexual harassment, which may be standalone or part of a broader pattern of abuse
- › Causing someone to engage in sexual activity without consent, such as forcing someone to strip, touch themselves sexually, or to engage in sexual activity with a third party
- › Consensual and non-consensual sharing of nude and semi-nude images and/or videos (also known as sexting or youth produced sexual imagery)
- › Upskirting, which typically involves taking a picture under a person's clothing without their permission, with the intention of viewing their genitals or buttocks to obtain sexual gratification, or cause the victim humiliation, distress or alarm
- › Initiation/hazing type violence and rituals (this could include activities involving harassment, abuse or humiliation used as a way of initiating a person into a group and may also include an online element)

Where children abuse their peers online, this can take the form of, for example, abusive, harassing, and misogynistic messages; the non-consensual sharing of indecent images, especially around chat groups; and the sharing of abusive images and pornography, to those who don't want to receive such content.

If staff have any concerns about child-on-child abuse, or a child makes a report to them, they will follow the procedures set out in section 7 of this policy, as appropriate. In particular, section 7.8 and 7.9 set out more detail about our school's approach to this type of abuse.

When considering instances of harmful sexual behaviour between children, we will consider their ages and stages of development. We recognise that children displaying harmful sexual behaviour have often experienced their own abuse and trauma and will offer them appropriate support.

### **Domestic abuse**

Children can witness and be adversely affected by domestic abuse and/or violence at home where it occurs between family members. In some cases, a child may blame themselves for the abuse or may have had to leave the family home as a result.

Types of domestic abuse include intimate partner violence, abuse by family members, teenage relationship abuse (abuse in intimate personal relationships between children) and child/adolescent to parent violence and abuse. It can be physical, sexual, financial, psychological or emotional. It can also include ill treatment that isn't physical, as well as witnessing the ill treatment of others – for example, the impact of all forms of domestic abuse on children.

Anyone can be a victim of domestic abuse, regardless of gender, age, ethnicity, socioeconomic status, sexuality or background, and domestic abuse can take place inside or outside of the home. Children who witness domestic abuse are also victims.

Older children may also experience and/or be the perpetrators of domestic abuse and/or violence in their own personal relationships. This can include sexual harassment.

Exposure to domestic abuse and/or violence can have a serious, long-lasting emotional and psychological impact on children and affect their health, wellbeing, development and ability to learn.

If police are called to an incident of domestic abuse and any children in the household have experienced the incident, the police will inform the key adult in school (usually the designated safeguarding lead) before the child or children arrive at school the following day. This is known as an Operation Encompass notification.

The DSL will provide support according to the child's needs and update records about their circumstances.

## **Homelessness**

Being homeless or being at risk of becoming homeless presents a real risk to a child's welfare.

The DSL and DDSL's will be aware of contact details and referral routes in to the local housing authority so they can raise/progress concerns at the earliest opportunity (where appropriate and in accordance with local procedures).

Where a child has been harmed or is at risk of harm, the DSL will also make a referral to children's social care.

## **So-called 'honour-based' abuse (including FGM and forced marriage)**

So-called 'honour-based' abuse (HBA) encompasses incidents or crimes committed to protect or defend the honour of the family and/or community, including FGM, forced marriage, and practices such as breast ironing.

Abuse committed in this context often involves a wider network of family or community pressure and can include multiple perpetrators.

All forms of HBA are abuse and will be handled and escalated as such. All staff will be alert to the possibility of a child being at risk of HBA or already having suffered it. If staff have a concern, they will speak to the DSL, who will activate local safeguarding procedures.

## **FGM**

The DSL will make sure that staff have access to appropriate training to equip them to be alert to children affected by FGM or at risk of FGM.

Section 7.3 of this policy sets out the procedures to be followed if a staff member discovers that an act of FGM appears to have been carried out or suspects that a pupil is at risk of FGM.

Indicators that FGM has already occurred include:

- › A pupil confiding in a professional that FGM has taken place
- › A mother/family member disclosing that FGM has been carried out
- › A family/pupil already being known to social services in relation to other safeguarding issues
- › A girl:
  - Having difficulty walking, sitting or standing, or looking uncomfortable
  - Finding it hard to sit still for long periods of time (where this was not a problem previously)
  - Spending longer than normal in the bathroom or toilet due to difficulties urinating
  - Having frequent urinary, menstrual or stomach problems
  - Avoiding physical exercise or missing PE
  - Being repeatedly absent from school, or absent for a prolonged period
  - Demonstrating increased emotional and psychological needs – for example, withdrawal or depression, or significant change in behaviour
  - Being reluctant to undergo any medical examinations
  - Asking for help, but not being explicit about the problem
  - Talking about pain or discomfort between her legs

Potential signs that a pupil may be at risk of FGM include:

- › The girl's family having a history of practising FGM (this is the biggest risk factor to consider)
- › FGM being known to be practised in the girl's community or country of origin



- › A parent or family member expressing concern that FGM may be carried out
- › A family not engaging with professionals (health, education or other) or already being known to social care in relation to other safeguarding issues
- › A girl:
  - Having a mother, older sibling or cousin who has undergone FGM
  - Having limited level of integration within UK society
  - Confiding to a professional that she is to have a “special procedure” or to attend a special occasion to “become a woman”
  - Talking about a long holiday to her country of origin or another country where the practice is prevalent, or parents/carers stating that they or a relative will take the girl out of the country for a prolonged period
  - Requesting help from a teacher or another adult because she is aware or suspects that she is at immediate risk of FGM
  - Talking about FGM in conversation – for example, a girl may tell other children about it (although it is important to take into account the context of the discussion)
  - Being unexpectedly absent from school
  - Having sections missing from her ‘red book’ (child health record) and/or attending a travel clinic or equivalent for vaccinations/anti-malarial medication

The above indicators and risk factors are not intended to be exhaustive.

### Forced marriage

Forcing a person into marriage is a crime. A forced marriage is one entered into without the full and free consent of 1 or both parties and where violence, threats, or any other form of coercion is used to cause a person to enter into a marriage. Threats can be physical or emotional and psychological.

Staff will receive training around forced marriage and the presenting symptoms. We are aware of the ‘1 chance’ rule, i.e. we may only have 1 chance to speak to the potential victim and only 1 chance to save them.

If a member of staff suspects that a pupil is being forced into marriage, they will speak to the pupil about their concerns in a secure and private place. They will then report this to the DSL.

The DSL will:

- › Speak to the pupil about the concerns in a secure and private place
- › Activate the local safeguarding procedures and refer the case to the local authority’s designated officer
- › Seek advice from the Forced Marriage Unit on 020 7008 0151 or [fmfco.gov.uk](mailto:fmfco.gov.uk)
- › Refer the pupil to an education welfare officer, pastoral tutor, learning mentor, or school counsellor, as appropriate

### Preventing radicalisation

- › **Radicalisation** refers to the process by which a person comes to support terrorism and extremist ideologies associated with terrorist groups
- › **Extremism** is vocal or active opposition to fundamental British values, such as democracy, the rule of law, individual liberty, and mutual respect and tolerance of different faiths and beliefs. This also includes calling for the death of members of the armed forces
- › **Terrorism** is an action that:
  - Endangers or causes serious violence to a person/people

- Causes serious damage to property; or
- Seriously interferes or disrupts an electronic system

The use or threat of terrorism must be designed to influence the government or to intimidate the public and is made for the purpose of advancing a political, religious or ideological cause.

Schools have a duty to prevent children from being drawn into terrorism. The DSL will undertake Prevent awareness training and make sure that staff have access to appropriate training to equip them to identify children at risk.

We will assess the risk of children in our school being drawn into terrorism. This assessment will be based on an understanding of the potential risk in our local area, in collaboration with our local safeguarding partners and local police force.

We will ensure that suitable internet filtering is in place and equip our Students to stay safe online at school and at home.

There is no single way of identifying an individual who is likely to be susceptible to an extremist ideology. Radicalisation can occur quickly or over a long period.

Staff will be alert to changes in Students' behaviour.

The government website [Educate Against Hate](#) and charity [NSPCC](#) say that signs that a pupil is being radicalised can include:

- › Refusal to engage with, or becoming abusive to, peers who are different from themselves
- › Becoming susceptible to conspiracy theories and feelings of persecution
- › Changes in friendship groups and appearance
- › Rejecting activities they used to enjoy
- › Converting to a new religion
- › Isolating themselves from family and friends
- › Talking as if from a scripted speech
- › An unwillingness or inability to discuss their views
- › A sudden disrespectful attitude towards others
- › Increased levels of anger
- › Increased secretiveness, especially around internet use
- › Expressions of sympathy for extremist ideologies and groups, or justification of their actions
- › Accessing extremist material online, including on Facebook or Twitter
- › Possessing extremist literature
- › Being in contact with extremist recruiters and joining, or seeking to join, extremist organisations

Children who are at risk of radicalisation may have low self-esteem or be victims of bullying or discrimination. It is important to note that these signs can also be part of normal teenage behaviour – staff should have confidence in their instincts and seek advice if something feels wrong.

If staff are concerned about a pupil, they will follow our procedures set out in section 7.5 of this policy, including discussing their concerns with the DSL.

Staff should **always** take action if they are worried.

### **Sexual violence and sexual harassment between children in schools**

Sexual violence and sexual harassment can occur:

- › Between 2 children of any age and sex

- › Through a group of children sexually assaulting or sexually harassing a single child or group of children
- › Online and face to face (both physically and verbally)

Sexual violence and sexual harassment exist on a continuum and may overlap.

Children who are victims of sexual violence and sexual harassment will likely find the experience stressful and distressing. This will, in all likelihood, adversely affect their educational attainment and will be exacerbated if the alleged perpetrator(s) attends the same school.

If a victim reports an incident, it is essential that staff make sure they are reassured that they are being taken seriously and that they will be supported and kept safe. A victim should never be given the impression that they are creating a problem by reporting any form of abuse or neglect. Nor should a victim ever be made to feel ashamed for making a report.

When supporting victims, staff will:

- › Reassure victims that the law on child-on-child abuse is there to protect them, not criminalise them
- › Regularly review decisions and actions, and update policies with lessons learnt
- › Look out for potential patterns of concerning, problematic or inappropriate behaviour, and decide on a course of action where we identify any patterns
- › Consider if there are wider cultural issues within the school that enabled inappropriate behaviour to occur and whether revising policies and/or providing extra staff training could minimise the risk of it happening again
- › Remain alert to the possible challenges of detecting signs that a child has experienced sexual violence, and show sensitivity to their needs

Some groups are potentially more at risk. Evidence shows that girls, children with SEN and/or disabilities, and lesbian, gay, bisexual and transgender (LGBT) children are at greater risk.

Staff should be aware of the importance of:

- › Challenging inappropriate behaviours
- › Making clear that sexual violence and sexual harassment is not acceptable, will never be tolerated and is not an inevitable part of growing up
- › Challenging physical behaviours (potentially criminal in nature), such as grabbing bottoms, breasts and genitalia, pulling down trousers, flicking bras and lifting up skirts. Dismissing or tolerating such behaviours risks normalising them

If staff have any concerns about sexual violence or sexual harassment, or a child makes a report to them, they will follow the procedures set out in section 7 of this policy, as appropriate. In particular, section 7.8 and 7.9 set out more detail about our school's approach to this type of abuse.

### **Serious violence**

Indicators which may signal that a child is at risk from, or involved with, serious violent crime may include:

- › Increased absence from school
- › Change in friendships or relationships with older individuals or groups
- › Significant decline in performance
- › Signs of self-harm or a significant change in wellbeing
- › Signs of assault or unexplained injuries

- › Unexplained gifts or new possessions (this could indicate that the child has been approached by, or is involved with, individuals associated with criminal networks or gangs and may be at risk of criminal exploitation (see above))

Risk factors which increase the likelihood of involvement in serious violence include:

- › Being male
- › Having been frequently absent or permanently excluded from school
- › Having experienced child maltreatment
- › Having been involved in offending, such as theft or robbery

Staff will be aware of these indicators and risk factors. If a member of staff has a concern about a pupil being involved in, or at risk of, serious violence, they will report this to the DSL.

### **Checking the identity and suitability of visitors**

All visitors to the school must enter via the school reception and sign-in using the electronic system which asks them their credentials and photographs them for a visitor's badge.

All visitors must wear a lanyard colour-coded to indicate their DBS status.

If the visitor is unknown to the setting and has not provided DBS they will be accompanied by a member of staff at all times and must wear an orange lanyard. We will not invite into the school any speaker who is known to disseminate extremist views and will carry out appropriate checks to ensure that any individual or organisation using school facilities is not seeking to disseminate extremist views or radicalise students or staff.

Visitors to the school who are visiting for a professional purpose, such as educational psychologists and school improvement officers, will be asked to show photo ID and:

- Will be asked to show their DBS certificate, which will be checked alongside their photo ID; or
- The organisation sending the professional, such as the LA or educational psychology service, will provide prior written confirmation that an enhanced DBS check with barred list information has been carried out
- › These visitors will wear a grey lanyard.
- › School staff wear a black lanyard.

### **Non-collection of children**

If a child is not collected at the end of the session/day, we will:

- Contact the parent/carer to investigate and deal with the circumstances accordingly
- If we cannot make contact with a parent or other contact, we will contact the Kent Front Door team for guidance.

### **Missing Students**

Our procedures are designed to ensure that a missing child is found and returned to effective supervision as soon as possible. If a child goes missing, we will:

Our procedures are designed to ensure that a missing child is found and returned to effective supervision as soon as possible. If a child goes missing, we will:

- Make reasonable attempts to find them on the academy site
- If they are not found via this means will inform parents/carers
- They may contact the Police
- From there we will follow Police instructions
- This will be recorded via Edukey.

## Appendix 6: Kent Levels Guidance

KENT SUPPORT LEVELS GUIDANCE SHEET PROFESSIONALS		1
<p>This form is designed as a quick reference guide and should be used in conjunction with the online Kent Support Level Guidance <a href="http://www.kscmp.org.uk">www.kscmp.org.uk</a></p> <p>The following examples and key indicators are for professional guidance only, these should always be considered in respect of the impact they are having on the child or young person</p>		
UNIVERSAL SUPPORT LEVEL 1	ADDITIONAL SUPPORT LEVEL 2	SPECIALIST SUPPORT LEVEL 4
<p><b>Child or Young Person—Indicators</b></p> <ul style="list-style-type: none"> <li>My attendance at school/college/training is above 90%</li> <li>There are no concerns about my home/school link</li> <li>There are no barriers to my learning and no concerns about my cognitive development</li> <li>There are no concerns about my behaviour</li> <li>I am able to discriminate between 'safe' and 'unsafe'</li> <li>I am able to understand right from wrong and act appropriately</li> <li>I have a positive sense of self, with no concerns about me forming relationships</li> <li>I have stable and affectionate relationships with my parents/carers</li> <li>I am physically healthy and my development checks are up to date</li> <li>I have an adequate and nutritious diet, regular dental and optical checks</li> <li>There are no concerns about my mental health</li> <li>There are no concerns about my attitude to drugs or alcohol</li> <li>There are no concerns about my use of technology</li> <li>I live in adequate housing and in a safe and secure environment</li> <li>I have a positive sense of my abilities</li> <li>I have positive relationships with my peers</li> <li>I have good core relationships with my siblings</li> </ul> <p><b>Parents / Carers</b></p> <ul style="list-style-type: none"> <li>My parents/carers can meet my needs, including taking me to school and all my health appointments</li> <li>My parents/carers provide me with guidance and boundaries to support my development</li> <li>My parents/carers provide me with secure and caring parenting</li> <li>My parents/carers are able to manage my behaviours</li> </ul> <p><b>Risks to me outside my home</b></p> <ul style="list-style-type: none"> <li>I am safe at home and outside in my community</li> </ul>	<p><b>Child or Young Person—Indicators</b></p> <ul style="list-style-type: none"> <li>I occasionally truant or have absences from school</li> <li>I have had some fixed term exclusions</li> <li>I have started to go missing, or been absent from school or home</li> <li>I have not developed good attachments/relationships</li> <li>I am a young carer with some responsibilities at home</li> <li>I am a teenage parent and I require some low level support</li> <li>I am not reaching my developmental milestones</li> <li>I have language/communication difficulties</li> <li>I need some low level support due to a diagnosed disability or sensory impairment</li> <li>I am showing early signs of associating with peers who are involved in crime or anti-social behaviour</li> <li>I am showing early signs of instigating or experiencing problematic sexual behaviour and language</li> <li>I have low level mental health or emotional issues or self harm</li> <li>I am saying 'I want to 'run away'</li> <li>I have disruptive/challenging behaviours</li> <li>I am at risk due to low level/emerging neglect</li> <li>I am home educated and there are concerns about my welfare</li> <li>I am negatively affected by difficult adult/family relationships</li> </ul> <p><b>Parents / Carers</b></p> <ul style="list-style-type: none"> <li>My family is impacted by poverty affecting their access to appropriate services/affecting my development</li> <li>My family home is in a poor state of repair, impacting on my health/development, or there is serious level of overcrowding</li> <li>My family are facing eviction/statutory homelessness</li> <li>My parents/carers struggle to meet my needs, or they place their own needs above mine</li> <li>My parents/carers struggle to provide me with good supervision or behaviour management</li> <li>My parents/carers often do not take me to my appointments which impacts negatively on my health or development</li> <li>My parents/carers health including physical/mental/learning disability or substance misuse, impacts negatively on my health or development</li> <li>My parents/carers require support to understand my disability or sensory impairment, and lack strategies to manage</li> <li>My parents/carers are at risk of entering the Criminal Justice System due to low level offending/anti-social behaviours</li> <li>My parents/carers used to be a Child in Care</li> </ul> <p><b>Risks to me outside my home</b></p> <ul style="list-style-type: none"> <li>I am being encouraged to use substances</li> <li>I am being encouraged to truant from school</li> <li>I am being encouraged to commit low level crimes or become involved in anti-social behaviour</li> <li>I may be at risk due to content, conduct or contact online</li> </ul>	<p><b>Child or Young Person—Indicators</b></p> <ul style="list-style-type: none"> <li>I have persistent unauthorised absence from school/NEET</li> <li>I am not on any school roll/I am Child Missing from Education (CME)</li> <li>I am at risk of, or I have been permanently excluded from school</li> <li>I am home educated, there are significant concerns for my welfare creating significant concerns</li> <li>I regularly go missing from home or school with no explanation</li> <li>I am at risk of suicide and my family need help to support me</li> <li>I am at risk of committing crimes and need preventative support</li> <li>I am a pregnant teenager with serious concerns about me/my unborn baby</li> <li>I am vulnerable to being sexually abused or exploited</li> <li>I am vulnerable to/exhibiting intimate partner abuse/violence</li> <li>I am vulnerable due to my drugs and/or alcohol use</li> <li>I have significant disabilities and require professional support</li> <li>I am a homeless child in need, including 16-17 years old</li> <li>I am a young carer whose caring duties are affecting my outcomes</li> <li>I have significant dental decay that has not been treated</li> <li>I am a child subject of a Court Ordered Report under s7 or s37 being completed by children's social care</li> <li>I am a child under an Education Supervision Order/Section 36 Children Act</li> </ul> <p><b>Parents / Carers</b></p> <ul style="list-style-type: none"> <li>I am unborn, the level of concern requires a pre-birth risk assessment</li> <li>I am being chronically neglected. Food, warmth and other basics are often not available. I live in very poor home conditions</li> <li>I am at risk due to the levels of domestic abuse in my family home</li> <li>I am at risk due to my parents/carers inability to parent consistently, and this is impacting negatively on my development</li> <li>I am at risk due to inappropriate child care arrangements</li> <li>I am at risk due to my parents/carers health or disability, or learning difficulty, or substance misuse, or their offending behaviour having a direct negative impact on me</li> <li>I am at risk due to my parents/carers own emotional or mental health difficulties, impacting on my health or development</li> <li>My family needs support to meet my disability needs</li> <li>I am Privately Fostered</li> <li>My family are being evicted despite professional/agency support</li> <li>I am at serious risk because my family may breakdown and I will be homeless, or I may have to be looked after outside my family network</li> </ul> <p><b>Risks to me outside my home</b></p> <ul style="list-style-type: none"> <li>I am being encouraged to become involved in a gang</li> <li>I am being encouraged to carry drugs/weapons</li> <li>I am at risk due to having contact with people who pose a risk of physical or sexual harm to children</li> <li>I am in a peer group that regularly goes missing</li> <li>I am at risk due to improper content, contact or conduct online</li> <li>I am vulnerable to criminal/sexual exploitation or radicalisation</li> </ul>
INTENSIVE SUPPORT LEVEL 3	SPECIALIST SUPPORT LEVEL 4	
<p><b>Child or Young Person—Indicators</b></p> <ul style="list-style-type: none"> <li>I have persistent unauthorised absence from school/NEET</li> <li>I am not on any school roll/I am Child Missing from Education (CME)</li> <li>I am at risk of, or I have been permanently excluded from school</li> <li>I am home educated, there are significant concerns for my welfare creating significant concerns</li> <li>I regularly go missing from home or school with no explanation</li> <li>I am at risk of suicide and my family need help to support me</li> <li>I am at risk of committing crimes and need preventative support</li> <li>I am a pregnant teenager with serious concerns about me/my unborn baby</li> <li>I am vulnerable to being sexually abused or exploited</li> <li>I am vulnerable to/exhibiting intimate partner abuse/violence</li> <li>I am vulnerable due to my drugs and/or alcohol use</li> <li>I have significant disabilities and require professional support</li> <li>I am a homeless child in need, including 16-17 years old</li> <li>I am a young carer whose caring duties are affecting my outcomes</li> <li>I have significant dental decay that has not been treated</li> <li>I am a child subject of a Court Ordered Report under s7 or s37 being completed by children's social care</li> <li>I am a child under an Education Supervision Order/Section 36 Children Act</li> </ul> <p><b>Parents / Carers</b></p> <ul style="list-style-type: none"> <li>I am unborn, the level of concern requires a pre-birth risk assessment</li> <li>I am being chronically neglected. Food, warmth and other basics are often not available. I live in very poor home conditions</li> <li>I am at risk due to the levels of domestic abuse in my family home</li> <li>I am at risk due to my parents/carers inability to parent consistently, and this is impacting negatively on my development</li> <li>I am at risk due to inappropriate child care arrangements</li> <li>I am at risk due to my parents/carers health or disability, or learning difficulty, or substance misuse, or their offending behaviour having a direct negative impact on me</li> <li>I am at risk due to my parents/carers own emotional or mental health difficulties, impacting on my health or development</li> <li>My family needs support to meet my disability needs</li> <li>I am Privately Fostered</li> <li>My family are being evicted despite professional/agency support</li> <li>I am at serious risk because my family may breakdown and I will be homeless, or I may have to be looked after outside my family network</li> </ul> <p><b>Risks to me outside my home</b></p> <ul style="list-style-type: none"> <li>I am being encouraged to become involved in a gang</li> <li>I am being encouraged to carry drugs/weapons</li> <li>I am at risk due to having contact with people who pose a risk of physical or sexual harm to children</li> <li>I am in a peer group that regularly goes missing</li> <li>I am at risk due to improper content, contact or conduct online</li> <li>I am vulnerable to criminal/sexual exploitation or radicalisation</li> </ul>	<p><b>Child or Young Person—Indicators</b></p> <ul style="list-style-type: none"> <li>I am not growing or developing properly with no medical reasons for this</li> <li>I am a non-mobile baby or non-mobile child with a bruise or an injury</li> <li>I am under 13 years of age and sexually active/have an STI/pregnant</li> <li>I have committed crimes / I am known to the Police</li> <li>I have been physically/sexually abused, including child sexual assault</li> <li>I have been kicked out of home, or I have left home as I am not safe there</li> <li>I have retracted socially, or I am struggling with my emotional/mental health and this is having a significant impact on me</li> <li>I have suicidal ideations/plans</li> <li>I have been abandoned or severely neglected by my parent/carer</li> <li>I am being significantly emotionally abused by my parent/carer/partner</li> <li>Others have significant concerns about my reliance on drugs or alcohol</li> <li>I am home educated, there are serious concerns for my safety</li> </ul> <p><b>Parents / Carers</b></p> <ul style="list-style-type: none"> <li>Meeting my needs as a severely disabled child has a significant impact on my family/parents/carers</li> <li>I am at significant risk because my carer cannot parent me properly</li> <li>I am at significant risk because my parents/carers are not supporting my medical or development needs</li> <li>I am at significant risk because my parents/carers are not able to protect me from known abusers in, or coming to, our family home</li> <li>I am at significant risk due to being left at home alone without adequate supervision or support</li> <li>I am at high risk due to the level of domestic abuse in my family home</li> <li>I am an unborn at risk due to the pregnancy being concealed</li> <li>I am at risk because my parent/carer has abused/neglected another child</li> <li>A previous child has been removed from my parents/carers care</li> <li>I am at risk, my carer is exaggerating or causing symptoms/illness in me</li> <li>I am at high risk due to my parents/carers learning or physical disability</li> <li>I am at high risk due to my parents/carers cultural customs regarding Female Genital Mutilation (FGM)</li> <li>I am being forced to marry someone I don't want to</li> <li>I am at high risk due to my family's honour/cultural customs</li> <li>My parents may be benefiting from the risks to me outside my home</li> </ul> <p><b>Risks to me outside my home</b></p> <ul style="list-style-type: none"> <li>I am being trafficked</li> <li>I am experiencing peer on peer abuse which may involve use of or being forced to carry weapons in a group setting, i.e. gangs/country lines</li> <li>I am at high risk of harm due to illegal or inappropriate content, conduct or contact online</li> <li>I am at high risk of harm of being radicalised, abused or exploited through technology or inappropriate relationships, in person, or online</li> <li>I am being criminally/sexually exploited in a group setting, i.e. Gangs</li> <li>I am instigating or experiencing intimate partner abuse or violence</li> <li>I am at high risk of significant harm when I go missing from home</li> </ul>	

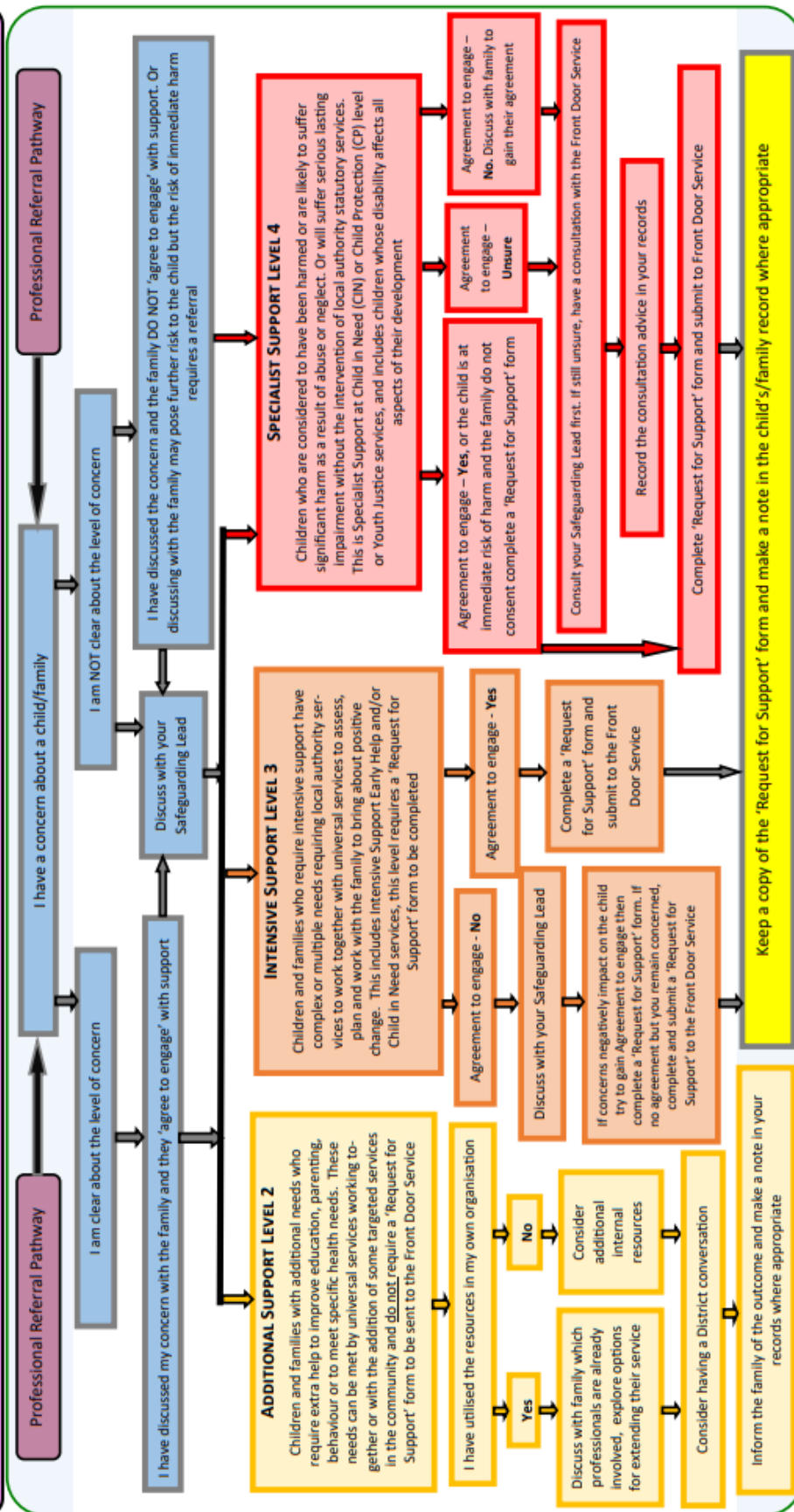


# KENT SUPPORT LEVELS GUIDANCE SHEET

2

Risks or harm to me outside my home: A contextual safeguarding approach is applied

This is when my experiences of harm are beyond my home, my parents/carers. It's when the different relationships that I form in the places, or spaces I spend time, like my neighbourhood, my school and online or within my peer group may feature violence and/or abuse. It often means that I am experiencing a level of coercive control that I don't recognise or accept as abusive relationships, which may undermine my parents/carers influence over me



REMEMBER— You only need to complete a Request for Support form if you are requesting support at Intensive or Specialist Support Levels 3 or 4.

Please answer the questions when completing the online 'Request for Support' form, because the information you provide, will be used to assess which is the most appropriate level of support required. If it is not assessed to require support at Level 3 or 4, the form will be returned to you so that you can consider the Support Level 1 or 2 options. Information at [kscmp.org.uk/supportlevels](https://kscmp.org.uk/supportlevels)

## Appendix 7: Staff Code of Conduct

**PURPOSE:** This code of conduct is designed to give clear guidance on the standards of behaviour which all staff are expected to observe when on the academy premises or conducting academy business. Staff are in a position of influence and must adhere to behaviour that sets a good example to all the students within the academy.

This code should be read in conjunction with Knole Academy safeguarding practices, other relevant academy policies and procedures and the Teachers' Standards (where applicable). Please note this guide is not exhaustive in defining acceptable and unacceptable standards of conduct and staff should use common sense in adhering to the underpinning principles.

### 1. Aims, scope and principles

This policy aims to set and maintain standards of conduct that we expect all staff to follow. This applies to all employees regardless of length of service. For the purposes of this policy "staff" encompasses any adult working on the premises, including governors and volunteers.

By creating this policy, we aim to ensure our school is an environment where everyone is safe, happy and treated with respect.

Many of the principles in this code of conduct are based on the Teachers' Standards.

School staff have an influential position in the school and will act as role models for pupils by consistently demonstrating high standards of behaviour.

We expect that all teachers will act in accordance with the personal and professional behaviours set out in the Teachers' Standards. We expect all support staff, governors and volunteers to also act with personal and professional integrity, respecting the safety and wellbeing of others.

Failure to follow the code of conduct may result in disciplinary action being taken, as set out in our staff disciplinary procedures.

Please note that this code of conduct is not exhaustive. If situations arise that are not covered by this code, staff will use their professional judgement and act in the best interests of the academy and its pupils.

### 2. Legislation and guidance

In line with the statutory safeguarding guidance Keeping Children Safe in Education, we should have a staff code of conduct, which should cover low-level concerns, allegations against staff and whistle-blowing, as well as acceptable use of technologies (including the use of mobile devices), staff/pupil relationships and communications, including the use of social media.

This policy also complies with our funding agreement and articles of association.

### 3. General obligations

Staff set an example to pupils. They will:

- › Maintain high standards in their attendance and punctuality
- › Never use inappropriate or offensive language in school
- › Treat pupils and others with dignity and respect
- › Show tolerance and respect for the rights of others
- › Not undermine fundamental British values, including democracy, the rule of law, individual liberty, and mutual respect and tolerance of those with different faiths and beliefs
- › Not express personal beliefs in a way that exploits pupils' vulnerability or might lead them to break the law
- › Understand the statutory frameworks they must act within
- › Adhere to the Teachers' Standards

### 4. Safeguarding

Staff have a duty to safeguard pupils from harm, and to report any concerns they have. This includes physical, emotional and sexual abuse, and neglect. All staff are expected to read and understand Part 1 of KCSIE, to undertake safeguarding training at least annually and specifically on induction and when legislation changes. They are expected to log safeguarding concerns on our safeguarding system.

This ensures that staff are familiar with our child protection and safeguarding policy and procedures, and the Prevent initiative, and ensure they are aware of the processes to follow if they have concerns about a child.

Our child protection and safeguarding policy and procedures are available to view on the staff share drive and in the staff handbook.

#### **4.1 Allegations that may meet the harm threshold**

This section is based on 'Section 1: Allegations that may meet the harm threshold' in part 4 of Keeping Children Safe in Education.

This section applies to all cases in which it is alleged that anyone working in the school, including a supply teacher, volunteer or contractor, has:

- › Behaved in a way that has harmed a child, or may have harmed a child, and/or
- › Possibly committed a criminal offence against or related to a child, and/or
- › Behaved towards a child or children in a way that indicates they may pose a risk of harm to children, and/or
- › Behaved or may have behaved in a way that indicates they may not be suitable to work with children – this includes behaviour taking place inside or outside of school

We will deal with any such allegation quickly and in a fair and consistent way that provides effective child protection while also supporting the individual who is the subject of the allegation.

A 'case manager' will lead any investigation. This will be the headteacher, or the chair of governors where the headteacher is the subject of the allegation.

#### **4.2 Low-level concerns about members of staff**

A low-level concern is a behaviour towards a child by a member of staff that does not meet the harm threshold, is inconsistent with the staff code of conduct, and may be as simple as causing a sense of unease or a 'nagging doubt'. For example, this may include:

- › Being over-friendly with children
- › Having favourites
- › Taking photographs of children on a personal device
- › Engaging in 1-to-1 activities where they can't easily be seen
- › Humiliating pupils

Low-level concerns can include inappropriate conduct inside and outside of work.

All staff should share any low-level concerns they have using the reporting procedures set out in our child protection and safeguarding policy. We also encourage staff to self-refer if they find themselves in a situation that could be misinterpreted. If staff are not sure whether behaviour would be deemed a low-level concern, we encourage staff to report it.

All reports will be handled in a responsive, sensitive and proportionate way.

Unprofessional behaviour will be addressed, and the staff member supported to correct it, at an early stage.

This creates and embeds a culture of openness, trust and transparency in which our values and expected behaviour are constantly lived, monitored and reinforced by all staff, while minimising the risk of abuse.

Reporting and responding to low-level concerns is covered in more detail in our child protection and safeguarding policy. This is available on the staff shared drive.

Our procedures for dealing with allegations will be applied with common sense and judgement.

#### **4.3 Whistle-blowing**

Whistle-blowing reports wrongdoing that it is "in the public interest" to report. Examples linked to safeguarding include:

- › Pupils' or staff's health and safety being put in danger
- › Failure to comply with a legal obligation or statutory requirement
- › Attempts to cover up the above, or any other wrongdoing in the public interest



Staff are encouraged to report suspected wrongdoing as soon as possible. Their concerns will be taken seriously and investigated, and their confidentiality will be respected.

Staff should consider the examples above when deciding whether their concern is of a whistle-blowing nature. Consider whether the incident(s) was illegal, breached statutory or school procedures, put people in danger or was an attempt to cover any such activity up.

Staff should report their concern to the headteacher or member of Senior Leadership. If the concern is about the headteacher, or it is believed they may be involved in the wrongdoing in some way, the staff member should report their concern to the chair of the governing board.

Concerns should be made in writing wherever possible. They should include names of those committing wrongdoing, dates, places and as much evidence and context as possible. Staff raising a concern should also include details of any personal interest in the matter.

For our school's detailed whistle-blowing process, please refer to our whistle-blowing policy.

### **5. Staff-pupil relationships**

Staff will observe proper boundaries with pupils that are appropriate to their professional position. They will act in a fair and transparent way that would not lead anyone to reasonably assume they are not doing so.

If staff members and pupils must spend time on a one-to-one basis, staff will ensure that:

- › This takes place in a public place that others can access
- › Others can see into the room
- › A colleague or line manager knows this is taking place

Staff should avoid contact with pupils outside of school hours if possible.

Personal contact details should not be exchanged between staff and pupils. This includes social media profiles.

While we are aware many pupils and their parents may wish to give gifts to staff, for example, at the end of the school year, gifts from staff to pupils are not acceptable.

If a staff member is concerned at any point that an interaction between themselves and a pupil may be misinterpreted, or if a staff member is concerned at any point about a fellow staff member and a pupil, this should be reported in line with the procedures set out in our child protection and safeguarding policy.

### **6. Communication and social media**

School staff's social media profiles should not be available to pupils. If they have a personal profile on social media sites, they should not use their full name, as pupils may be able to find them. Staff should consider using a first and middle name instead and set public profiles to private.

Staff should not attempt to contact pupils or their parents via social media, or any other means outside school, in order to develop any sort of relationship. They will not make any efforts to find pupils' or parents' social media profiles.

Staff will ensure that they do not post any images online that identify children who are pupils at the school without their consent.

Staff should be aware of the school's ICT Acceptable Use Policy.

### **7. Acceptable use of technology**

Staff will not use technology in school to view material that is illegal, inappropriate or likely to be deemed offensive. This includes, but is not limited to, sending obscene emails, gambling and viewing pornography or other inappropriate content.

Staff will not use personal mobile phones and laptops, or school equipment for personal use, in school hours or in front of pupils. They will also not use personal mobile phones or cameras to take pictures of pupils.

We have the right to monitor emails and internet use on the school IT system.

## **8. Confidentiality**

In the course of their role, members of staff are often privy to sensitive and confidential information about the school, staff, pupils and their parents.

This information should never be:

- › Disclosed to anyone unless required by law or with consent from the relevant party or parties
- › Used to humiliate, embarrass or blackmail others
- › Used for a purpose other than what it was collected and intended for
- ›

This does not overrule staff's duty to report child protection concerns to the appropriate channel where staff believe a child has been harmed or is at risk of harm, as detailed further in our child protection and safeguarding policy.

## **9. Honesty and integrity**

Staff should maintain high standards of honesty and integrity in their role. This includes when dealing with pupils, handling money, claiming expenses and using school property and facilities. Staff will not accept bribes. Gifts that are worth more than £25 must be declared and recorded on the gifts and hospitality register.

Staff will ensure that all information given to the school is correct. This should include:

- › Background information (including any past or current investigations/cautions related to conduct outside of school)
- › Qualifications
- › Professional experience

Where there are any updates to the information provided to the school, the member of staff will advise the school as such as soon as reasonably practicable. Consideration will then be given to the nature and circumstances of the matter and whether this may have an impact on the member of staff's employment.

## **10. Dress code**

Staff will dress in a professional, appropriate manner.

Outfits will not be overly revealing, and we ask that tattoos and piercings remain discreet.

Clothes will not display any offensive or political slogans. Please see Appendix 1

## **11. Conduct outside of work**

Staff will not act in a way that would bring the school, or the teaching profession, into disrepute. This covers conduct including but not limited to relevant criminal offences, such as violence or sexual misconduct, as well as negative comments about the school on social media.

## **12. Monitoring arrangements**

This policy will be reviewed every 3 years but can be revised as needed. It will be approved by the full governing body.

Our governing body will ensure this code of conduct is implemented effectively, and will ensure appropriate action is taken in a timely manner to safeguard children and deal with any concerns.

## **13. Links with other policies**

This policy links with our policies on:

- › Staff Disciplinary Policy, which will be used if staff breach this code of conduct. It also sets out examples of what we will deem as misconduct and gross misconduct
- › Staff grievance Policy
- › Child protection and safeguarding Policy
- › Online Safety Policy
- › Fraud Policy
- › Physical Contact Policy
- › ICT Acceptable Use Agreement
- › Dress Code Guidance
- › Dignity at Work Policy
- › Gifts and hospitality
- › Whistle-blowing Policy
- › Any other relevant policies

I have read and understand the above staff code of conduct and will refer to relevant Policies and Procedures where applicable.

NAME: (print) ..... Date: .....