



SIR WILLIAM ROBERTSON ACADEMY



SIR WILLIAM ROBERTSON 1860-1933

In sending your child to Sir William Robertson Academy, you will be joining a school community which celebrates hard work and aspiration as embodied by Sir William Robertson, a unique member of the British armed services whose childhood home was in the village of Welbourn where his father was the local post-master and tailor.

William Robertson is the only member of the army to have risen from Private to Field Marshal; this was at a time when the class system that underpinned society was rigidly structured and worked against such aspirational movement through the classes. Everything that is written about this extraordinary man testifies to his perseverance, tenacity, attention to detail and his support for his fellow officers and the men serving under him.

We are proud of the Sir William Robertson name – a name that captures the principles that we now use to drive our school forward and to equip our young people with the qualities they need, enshrined in our mission to ASPIRE.



Welcome to Sir William Robertson Academy

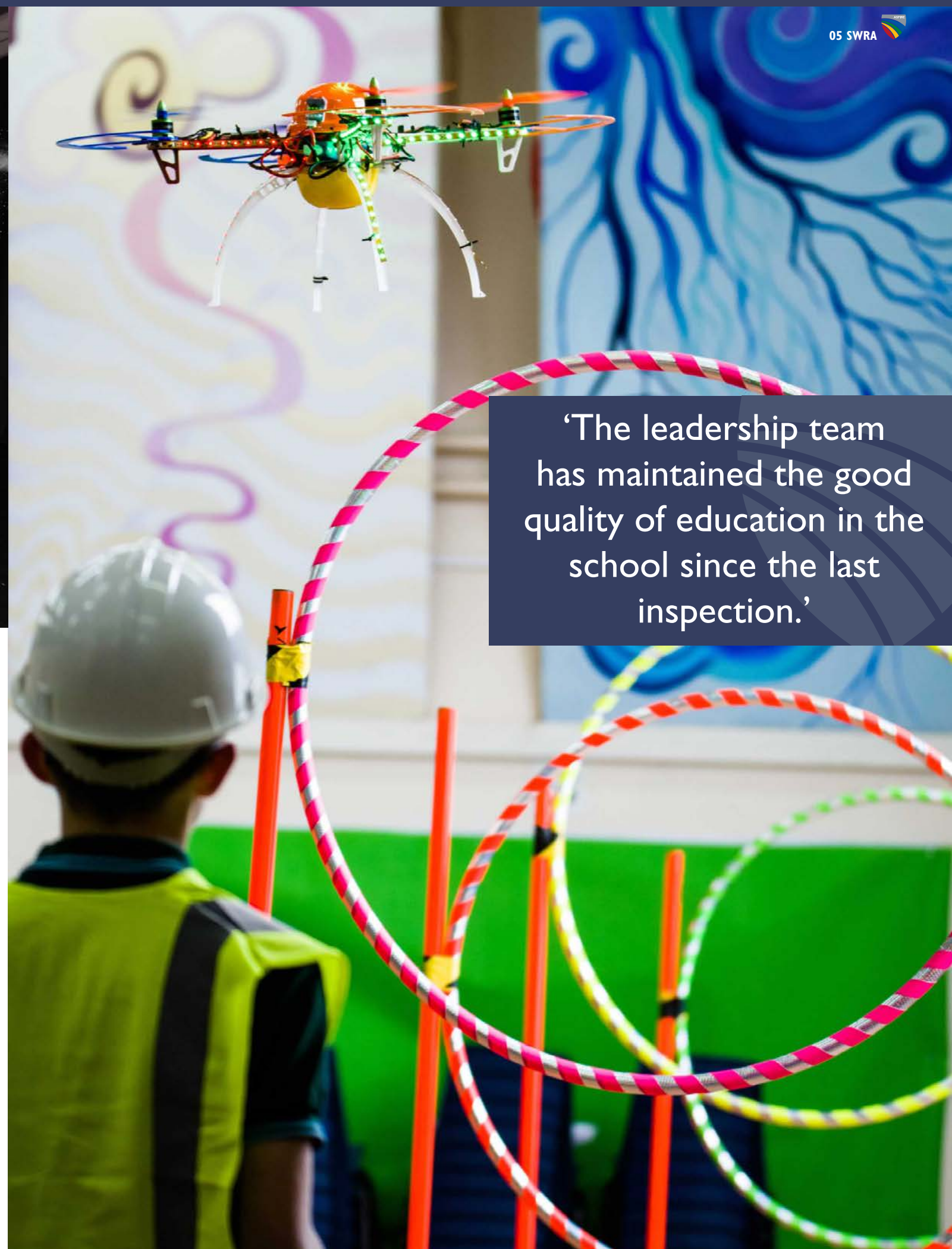
Sir William Robertson Academy is a highly successful 11-18 non-selective Lincolnshire school. We are proud to be one of the most sought after schools in the area, with parents recognising the benefits of choosing a very successful school, set in a peaceful and rural location. In addition to serving our local catchment area, high levels of parental demand have led the school to offer daily school transport to Newark, Grantham, Sleaford, Witham St Hughs, North Hykeham and the surrounding villages.

The school is driven by the aim to *ASPIRE* and this directs the work of all staff and pupils as we strive for year-on-year improvement. The curriculum is designed to meet the needs of every child and we offer a broad choice of academic and vocational options. These combine to enable us to offer a 'curriculum for every future'.

The artistic and sporting life of the school is rich and vibrant but can only be truly appreciated by visiting us. School tours and further information are available by ringing the school office where our team will be pleased to help you.

We hope that you will choose to apply for a place at our school if you share our vision for a twenty-first century education in a calm, disciplined and supportive environment.

Mark Guest
Headteacher



'The leadership team has maintained the good quality of education in the school since the last inspection.'

It is our firm belief that pupils will achieve to the best of their ability and be happiest in education when there is a successful partnership between home and school.

We offer a comprehensive programme to ensure that we can support all pupils' academic, social, moral and personal welfare, allowing them to settle quickly into their new school.

- A**chieve ... their full potential as individuals
- S**upport ... each other as members of a caring community
- P**ursue ... knowledge and understanding
- I**nvolve ... themselves in the wide range of activities we offer
- R**espect ... other people's values, beliefs and customs
- E**xtend ... their horizons, striving to achieve their best



‘Current pupils are on track to achieve ambitious targets and make even better progress.’

Our broad and balanced curriculum is designed to be challenging, ambitious and accessible for all of our pupils.

We celebrate a range of pupil achievements and use our collective expertise to drive excellence and foster innovation. We are determined to support the future success of our pupils and in doing so provide relevant targets, encourage extra-curricular activities, and provide educational and pastoral support to ensure pupils are reaching their full potential.



We believe in inclusion and seek to create an environment where all pupils are equal and their achievements are celebrated.

In fulfilling this aim, we recognise that some pupils may have a specific educational need, learning difficulty or physical difficulty which has been identified either in primary school or from our own testing and observation. We aim to support every child's individual needs through inclusive, differentiated classrooms with additional support and intervention where necessary.



As a school we believe that we have a duty to stretch and challenge all of our pupils, regardless of their ability, which is enshrined in the school's motto of ASPIRE.

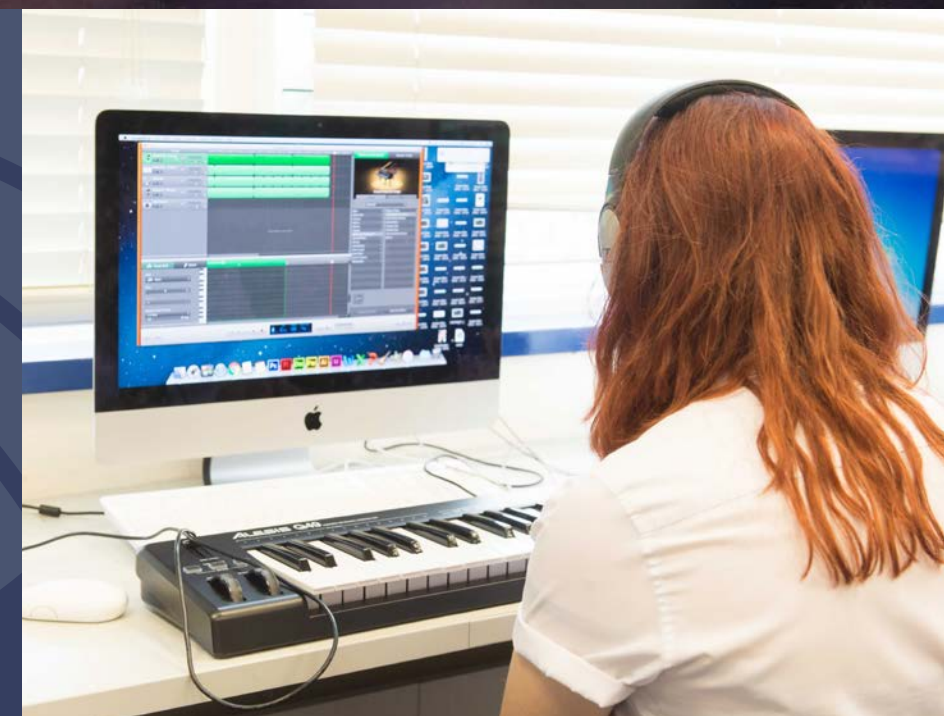


We encourage our pupils to 'Aspire' throughout their school life, which includes being a part of the wider SWRA community. It is important to us that our pupils grow into well-rounded individuals, therefore our pupils are encouraged to take advantage of our comprehensive and varied extra-curricular activities to develop personal growth.



Our Performing Arts department is an inviting and welcoming place for pupils to explore.

Both in and out of lessons pupils have access to a range of diverse instruments, equipment and opportunities to let their creativity flourish. Pupils are able to explore their interests and showcase their talents through activities such as the highly praised annual school production and Will Rob's Got Talent.





Pupils enjoy a broad and challenging PE curriculum which develops their skills in a range of individual and team sports and provides a wealth of leadership opportunities. We develop a significant number of our pupils as Sports Leaders who act as role models and lead many sporting events with our local primary schools.



‘Pupils are safe and cared for well. Parents and pupils agree that the school is a safe place.’

Base Tutors carefully monitor how each pupil in their base group is progressing and provide support, guidance and encouragement when necessary.

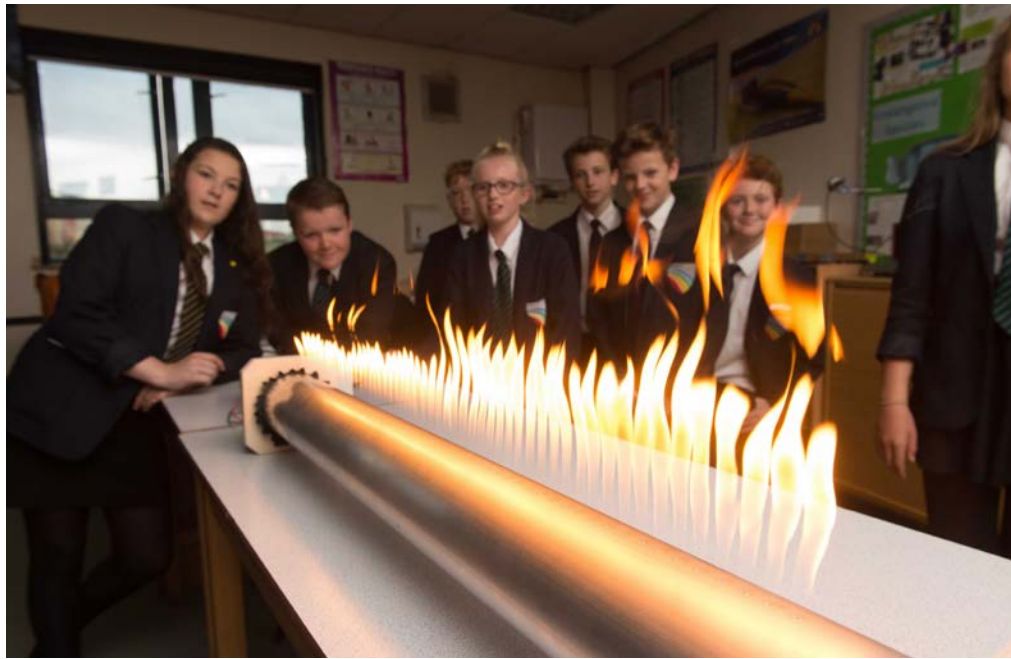
Base groups follow a programme of activities that are chosen to enable our pupils to develop socially, morally, spiritually and culturally. Our termly programmes are tailored to help our pupils understand the opportunities and challenges of living in modern Britain and how to work together as responsible and caring citizens.



Our unique rural location offers a beautiful and safe environment in which our pupils thrive. Our location considerably enhances the overall ethos of a calm and purposeful school where mutual respect is the hallmark.

We are committed to the principle that all children should be happy and feel safe in school - excellent behaviour and highly effective teaching are the cornerstones for pupils to make great progress in their learning and personal development.

‘You and your leaders share a determination to improve the quality of education at Sir William Robertson Academy and have a committed staff team. A good sign that your leadership has had an impact is the increased popularity of the school.’



Enshrined in the school aim to 'ASPIRE' are the core elements of the school's approach to appropriate behaviour: to support each other as members of a caring and creative community and to respect other people's values, beliefs and customs.

We expect everybody in this school should be polite, considerate and supportive of others and we build a strong culture of mutual respect. It is important to us that our pupils have an opportunity to help shape and support our school community through such key roles as Head Pupils, Prefects, Peer Mentors, Student Council and our Student Leadership Team.





SIR WILLIAM ROBERTSON ACADEMY



Sir William Robertson Academy

Main Road, Welbourn, Lincoln LN5 0PA

Tel: 01400 272422

www.swracademy.org

enquiries@swracademy.org



Sir William Robertson Academy



@sirwillrob



@swracademy
@performingswra



SWR Academy