

**DULWICH COLLEGE | YANGON |**  
| PUN HLAING | STAR CITY |



# *Applying to Dulwich College Yangon*

a Guide for Candidates



**GRADUATE  
WORLDWISE.**



# OUR GUIDING STATEMENTS

---

Our Vision and Purpose:

*Our students have the skills and motivation to make a positive difference in the world*

Our Vision and Purpose is supported by three clear pillars that govern our decision making and our actions.

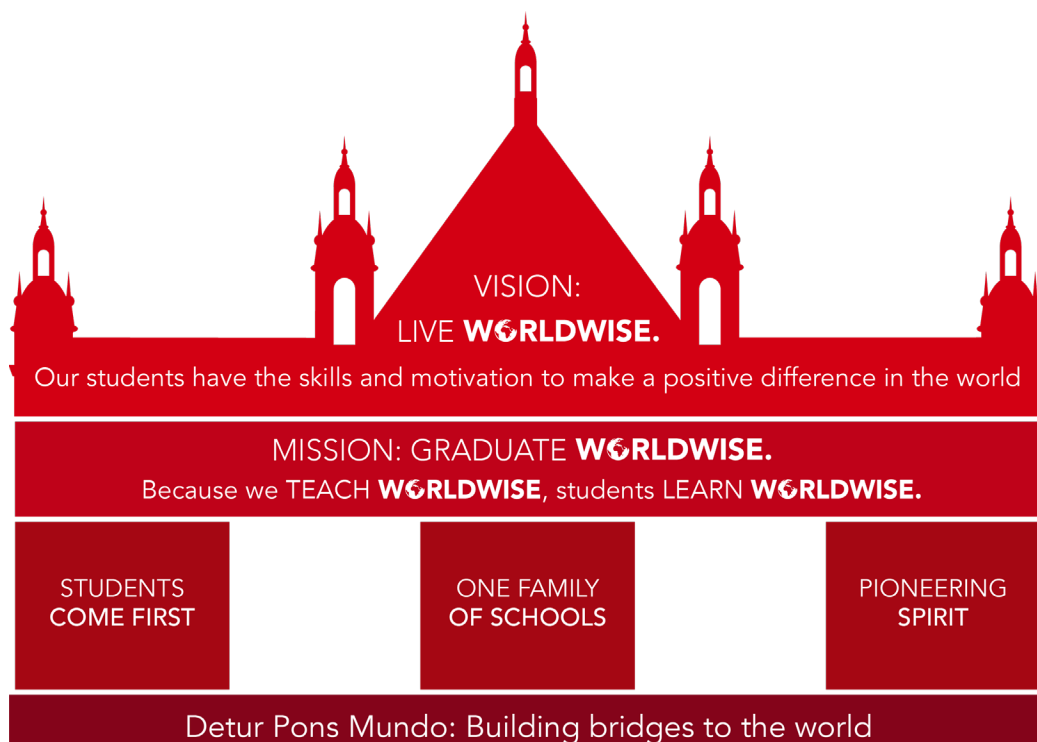
*Students Come First  
One Family of Schools  
Pioneering Spirit*

We believe that inspiration comes from the way we behave, and our attitude as an organisation and as individuals within it, supported by six Dulwich character traits we consider most valuable for our staff and our students.

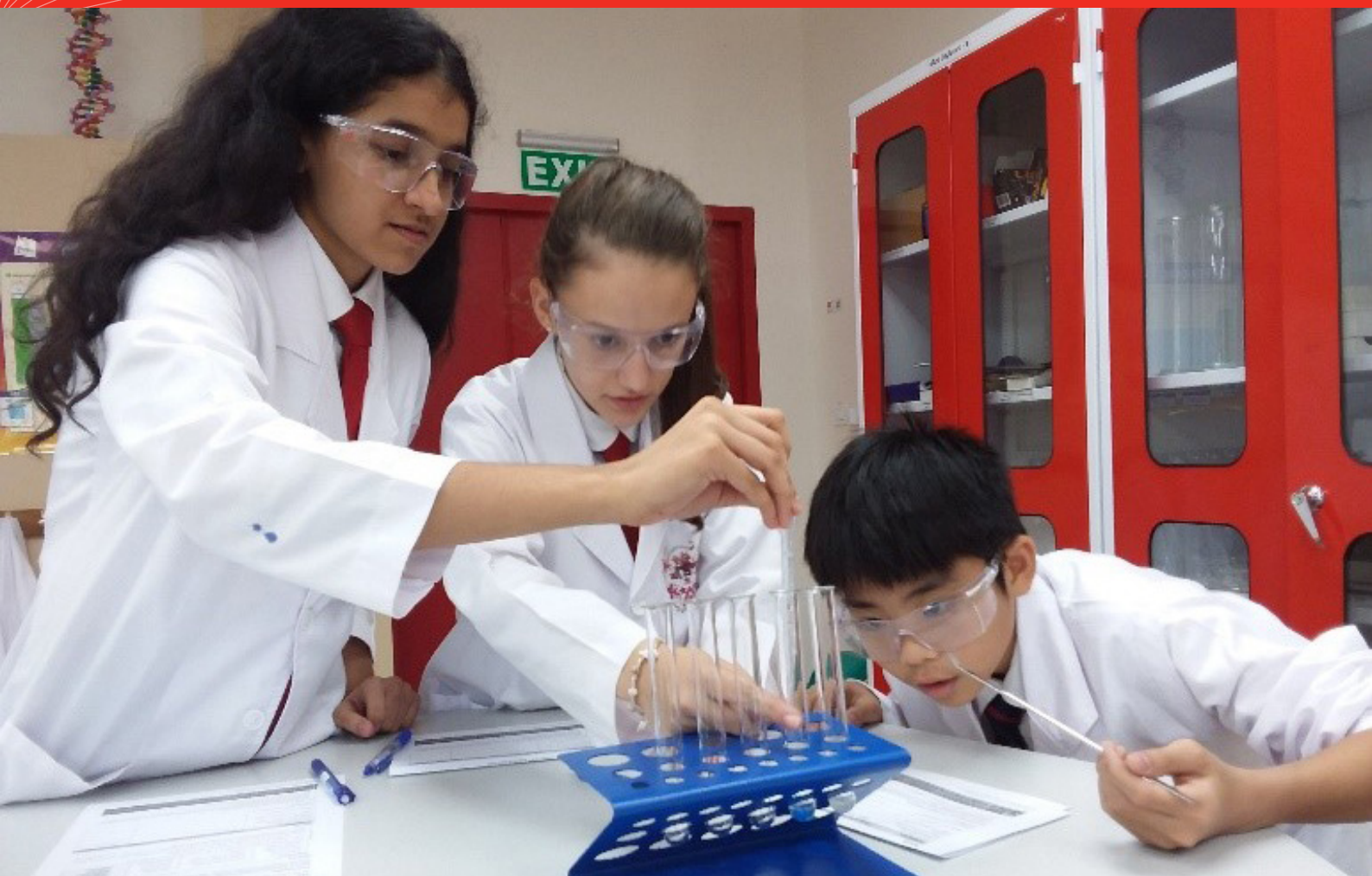
Courage, Perseverance, Service, Collaboration, Imagination, Spirit of Fun

Our Vision and Purpose is reflected in our motto: the Latin word *Exhortando* means inspire, and our motto, *Detur Pons Mundo*, translates as 'Building Bridges to the World'.

Our mission is that our students 'Graduate Worldwide'. Because we Teach Worldwide, students Learn Worldwide.







## Why should *you choose Dulwich?*

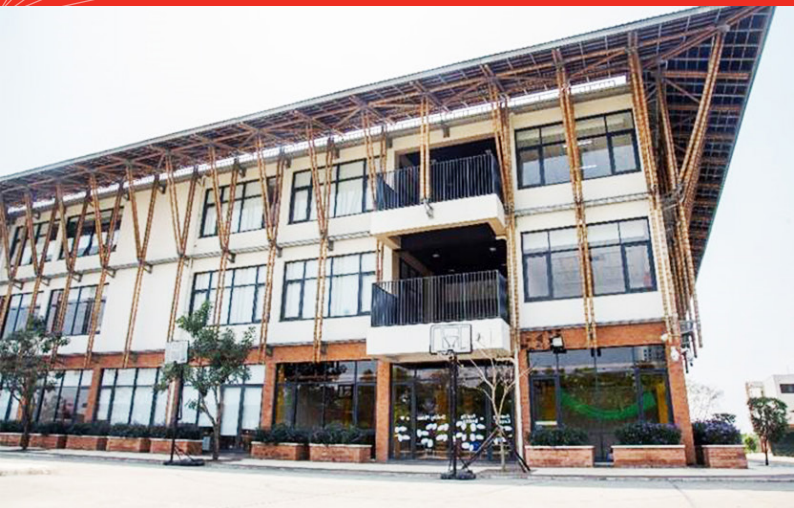
Dulwich College Yangon is one school spread over two campuses in Yangon, Myanmar. Our Pun Hlaing campus opened in August 2016 and we unveiled our new Senior School building in August 2017. The Star City campus opened in August 2017. Like our nine sister schools in the Dulwich College International (DCI) family in Asia, we are a well-resourced, purpose-built school with 21st century learning spaces and world-class facilities.

With regular opportunities to take on greater responsibilities, staff are able to make a real difference at DCY, backed by the strength and experience of the DCI family. Our schools share an excellent reputation, a common ethos and high educational standards.

As part of an international network of schools, teachers at Dulwich College Yangon will have frequent opportunities to interact with their peers in other DCI schools, sharing best practice, collaborating on action research or planning professional development events. Working in a network opens up a wide range of future career opportunities, and as the network expands beyond the UK and Asia, these opportunities will only grow. In Yangon, staff regularly collaborate across both campuses with their colleagues.

Our Colleges attract motivated and enthusiastic students and staff from all over the globe. We are looking for teaching staff with a sense of adventure, a strong work ethic and a passion for their profession.





## OUR COLLEGE

---

### DULWICH COLLEGE YANGON WILL CATER FOR INTERNATIONAL STUDENTS AGED TWO TO EIGHTEEN

.....  
Drawing on the best practices of both British and international education, both campuses currently offer an inspiring curriculum for students from Toddlers to Year 10, suitably adapted to reflect the needs of students in an international school. The College will continue to grow every year until it reaches Year 11 at the Pun Hlaing campus and Year 13 at the Star City campus. Students at Pun Hlaing will transfer to the Star City campus for Year 12 to complete their final two years of schooling. Both campuses launched the (I)GCSE programme in 2019/20.

Like its sister schools, Dulwich College Yangon emphasizes the development of the whole child. Participation in sport and the arts, alongside a dedication to community service, are an integral part of a Dulwich College International education. Students at DCY have the opportunity to take part in a number of collaborative group events throughout the year, such as the Diversity Project (a series of music workshops and concerts across the Colleges), the Dulwich Games (a sports tournament for Junior School students), the Shakespeare Festival, the Dulwich Festival of Music and a range of conferences for students and teachers spanning a variety of different topics, from environmental issues to student leadership.

The Pun Hlaing campus enjoys excellent amenities including a 350-seat black box theatre, music, art and technology rooms, science laboratories, covered sports courts and a full-size sports field, as well as the full range of specialist facilities for all curriculum subjects. Planned facilities for the future include an indoor gymnasium and an aquatic centre with a 25 metre short- course swimming pool. Work has already begun on the construction of the new Primary School building.

The Star City campus also has music, art and design technology rooms, plus a science laboratory and the full range of specialist facilities for all curriculum subjects. For sport, it enjoys a 10-lane, 50 metre Olympic standard swimming pool and a 20m training pool, a double-court gymnasium, full-size outdoor football pitch, running track, sports clubhouse and dance studio. Additional facilities to be built in the future include a new Junior/Senior School building, 550 seat theatre, Art and Design Centre and an additional sports field. We are proud to have launched Myanmar's first International Boarding House which is fully operational now at Star City campus.



## TEACHING AT DULWICH COLLEGE INTERNATIONAL SCHOOLS

---

### A LIFE CHANGING EXPERIENCE

---

Teaching in an international school is a different experience from teaching at home. Living in an international context forces us to look at life from completely new perspectives and raises our cultural awareness. Across the group, our students hail from over 50 countries on 6 continents. Many teachers find it fascinating to live in such a diverse community, as they further their careers while exploring new cultures, not only through their travels but also in their day-to-day encounters with members of the school community.

## ACADEMIC REPUTATION

At the Dulwich College International Colleges, external examinations are taken at the same time as they are in the UK. In Years 10 and 11, students follow a range of (I)GCSE courses and in Years 12 and 13 students study the International Baccalaureate Diploma Programme.

Teachers who are new to the international school environment are often pleasantly surprised by our class sizes. The maximum class size is 22 students, except in the Early Years, where class sizes are smaller and strict adult/child ratios are observed.

As in London, admissions at Dulwich Colleges in Asia are academically selective. Teachers who are new to Dulwich College International have commented that the students are not only exceptionally able and engaged in their learning, but highly creative, confident and polite.

Our Colleges' educational philosophy places equal emphasis on a student's intellectual and personal development, and students are encouraged to participate in a wide variety of activities outside of the mainstream curriculum.

## UNIVERSITY DESTINATIONS

### UNIVERSITY DESTINATIONS OF INTERNATIONAL OLD ALLEINIANS

**9%** of our students attended the top **10** QS ranked universities in the world.

**20%** of our students attended the top **25** QS ranked universities in the world.

**50%** of our students attended the top **100** QS ranked universities in the world.

A further **5%** of our students attended specialist universities such as Berklee College of Music, Parsons The New School for Design, Les Roches International School of Hotel Management, Central Saint Martins College of Art and Design and Instituto Europeo di Design.



#### TOP 15 UNIVERSITY DESTINATIONS OF INTERNATIONAL OLD ALLEINIANS

Name of Institution	Number of IOAs	QS Ranking
University of Cambridge	10	2 =
Imperial College London	18	2 =
University of Oxford	13	5 =
University College London	25	5 =
University of Edinburgh	3	17
University of Toronto	32	20
University of California, Berkeley	22	27
University of Hong Kong	20	28
University of Manchester	11	30
University of Melbourne	12	33
New York University	16	41
University of British Columbia	24	43
London School of Economics	22	71
University of Southern California	11	131
University of Bath	12	179





## ENRICHMENT

---

In keeping with over 400 years' of Dulwich College experience and tradition, DCI schools take pride in our students' achievements both in and out of the classroom. We give our students the authentic opportunities to develop their creativity, athletic abilities, personal qualities and self-esteem. Students come first.

At Dulwich College Yangon we believe that students learn as much outside the classroom as they do inside the classroom. We recognise that achievement takes many forms and students are encouraged to participate in a wide range of activities encompassing sport, music, drama, art and technology as part of our Co-Curricular Activities (CCA) programme.

Every teacher contributes to the CCA programme by running after-school clubs, coaching a team, or getting involved in another activity. Teachers with a particular hobby, interest or skill can propose activities to run. Our teachers find that clubs are a productive way of interacting with the students beyond the confines of the classroom.







## PERFORMANCE

Our Colleges in Asia place a strong focus on the performing arts, frequently collaborating on music and drama events and festivals. Our professional theatres are outstanding, and we put them to good – and frequent – use. All the Colleges put on dramatic productions, and Junior School and Early Years teachers are expected to be involved in their organization, whether casting, directing, producing, or writing a range of assemblies, plays and musicals.





## OUR COMMUNITY

We strongly encourage parents to support and be involved in their child's education, and all parents at Dulwich College Yangon are members of the Friends of Dulwich (FoD) parent-teacher organisation, which is a valuable part of every Dulwich international school. FoD supports the students and teachers by helping to organise class or school-wide events. In addition, they make significant contributions to charities through fund-raising events. FoD is also a wonderful source of support for parents, offering help and friendship to both new and old families at the College.

Our families choose Dulwich College Yangon for its academic rigour and bespoke approach to providing a broad and balanced curriculum. They are appreciative and respectful of the efforts of our teachers to develop personal and meaningful relationships with the students and parents. Myanmar culture is very important to many families and they enjoy the focus we place on the celebration of local history, language and traditions.

Dulwich College Yangon is committed to using its position to actively engage with the local community and help contribute to the development of Myanmar. Yangon was chosen as the venue for the inaugural project of the Dulwich International Schools Foundation (DISF), through its partnership with Magic Bus Myanmar, who now work with over 4,000 students in locations across Yangon. The Gap Kids programme is based in each of the campuses, with teachers and students working alongside young people from the local communities. Both projects are intended to break the cycle of poverty through participation in these livelihood projects.





## INTRODUCTION TO THE EARLY YEARS

---

At Dulwich College Yangon we are passionate about providing our youngest learners in school with engaging, meaningful and quality experiences. Our learning philosophy places great value on free-flow play and learning experiences, that we know will have the greatest impact of our youngest children's development as effective learners.

Early Years teachers at Dulwich College Yangon have a passion for creating the best quality learning environment, indoors and outdoors, to support the children with their learning. Our learning environments are separated into age groups, however, we use a unit, team-based approach to ensure that our practitioners collaborate, research and adapt environments together. This helps us to create excellent and engaging spaces for our children, which change with their emerging interests, targets their needs, and supports them to the fullest extent.

Our curriculum is delivered through a careful balance of child-initiated and adult-led learning. We ensure that we provide our children with long, uninterrupted periods of time, during which they are fully engaged in their learning through the first-rate, continuous provision that is offered to them.

Our approach to the curriculum focuses on the children's interests. This is led purely by children, with the adult taking the role of facilitator. Projects can start off through teachers observing an interest and then extending this through the children's ideas, thoughts, and questions regarding what they want to find out more about.

The small class sizes allow us to give each child the individual help he or she needs. Each class has a qualified and experienced teacher and assistant teachers. Our classrooms are bright and colourful and are designed to encourage reading, observation and discussion. Children in Years 1 and 2 also join the co-curricular activities programme.

*We aim to create a caring, exciting and rewarding environment that gives all of our children a love of learning and all our teachers great opportunities for development. We look forward to welcoming you to Early Years.*



## INTRODUCTION TO JUNIOR SCHOOL

---

At DCY our aim is to ensure that all the children in our care are happy, confident, well-motivated, enthusiastic and excited about life. We aim to provide an appropriate and balanced academic challenge to allow all students to realize their potential and to prepare them for the opportunities, responsibilities and experiences during the next steps of their education and adult life.

In our Junior Schools, we offer a unique curriculum which provides our students with a broad-based, inquiry-based approach to learning that develops skills, knowledge and understanding. We are proud that our children take ownership of their learning, through an emphasis on student agency, as we want them to understand how they learn, how to reflect, transfer and apply their learning across a range of subjects.

The Junior Schools are comprised of Years 3 to 6. The children are taught English, mathematics, science, humanities and wellbeing by the class teacher, typically through inquiry-based curriculum topics, or through discrete lessons, depending on the focus of the learning. Specialist teaching is provided in Mandarin, Myanmar language, art and design, music and P.E.

In short, we pride ourselves on the time taken to discover what interests our children, what sparks them, fascinates them and concerns them, then using this knowledge to create meaningful and inspiring learning opportunities for the students.

*If you are an enthusiastic and committed teacher with a passion for learning, you would be very welcome to join us in the Junior School team!*



## INTRODUCTION TO SENIOR SCHOOL

---

The Senior School at Dulwich College Yangon currently caters for students in Year 7 to Year 10, expanding annually until reaching its first graduating class of Year 13 students. The teachers in the Senior School have wonderful opportunities to grow with the school and shape its development. We deliver a rigorous academic programme, based on an enhanced form of the English National Curriculum in Years 7 to 9 and the IGCSE curriculum in Years 10 and 11, that gives students both breadth and depth of learning.

In Years 12 and 13 the Pun Hlaing students will transfer to Star City, where they will be able to use the boarding facilities. The College has candidacy status in its application to gain authorization as an IB World School, as it looks to continue its educational programme through to Year 13.

The Senior School also provides appropriate pastoral care during a time of transition, allowing students to successfully adapt to the greater expectations that they will face in their final years of schooling at the College.

Students are given increasing levels of agency in their learning as well as their involvement in school and community life. They are given genuine opportunities to shape the development of their school.

*Our Senior School is exciting, energetic and vibrant, full of challenge and opportunity for the right teachers. We would love to welcome you to be a part of this growing and dynamic community.*





## LIVING IN YANGON

---

### Yangon, Myanmar

Yangon, formerly known as Rangoon, has a population of over 5 million and while no longer the capital of Myanmar it continues to be the largest city and commercial capital of the nation. The city sits on the confluence of the Yangon and Bago rivers, 30 kilometres from the Andaman Sea coast, and enjoys a tropical monsoon climate.

Yangon boasts a rich history and offers unique sites including the Shwedagon Pagoda, Inya Lake and the highest number of colonial period fin-de-siècle buildings in Southeast Asia. Yangon International Airport is connected by direct flights to major cities across Southeast Asia and connections are available to Europe via the Arabian Gulf.

### History and Culture

Described as the 'garden city of the East' at the turn of the 20th Century, Yangon has played a central role in the colonial and contemporary history of Myanmar. Designed by the British, the city grew to become one of the leading cities in Southeast Asia by the Second World War. Due to isolationist policies, the city's infrastructure has declined in the postwar era. Since the first opening-up of the country in the 1990s, the city has seen renewed investment, a trend that continues today as new apartments, office blocks and amenities are built to cater for the demands of an increasing population, and the arrival of expatriate workers and their families.

Yangon offers an excellent taste of Myanmar culture, with museums, galleries and restaurants providing insights and flavours of this ethnically diverse nation. Although the infrastructure occasionally struggles to keep up with the pace of development, Yangon retains its charm as it seeks to rediscover its prominent role in the region.



### Daily life in Yangon

The official language of the country is Myanmar, with a great variety of ethnic dialects spoken throughout the country. English is frequently seen throughout Yangon, in street signs, maps and directions. The older generation often has a good understanding of English, and the younger generation is learning fast. While English is not necessarily widely spoken, one is able to make oneself understood without many difficulties.

The colonial quarter of downtown Yangon provides a 'living museum' of colonial architecture and bustling street life. The ethnic and religious diversity of the country is most apparent downtown, where Catholic cathedrals stand alongside synagogues, Hindu temples, mosques and Baptist churches, all under the glimmering gaze of the Shwedagon Pagoda, the holiest Buddhist shrine in Myanmar.

### Arriving in Yangon

Our Human Resources team supports newly appointed teachers with a comprehensive orientation programme. This includes getting your residency visa, settling into your accommodation, organising your transportation, getting your banking in order and generally make it easy in those first weeks to acclimatize to the city. Existing staff will also be on hand to guide you through their own experiences and give you those small tips that make life that much easier.

Dulwich College offers a strong package with excellent saving potential. In addition to a competitive salary the College offers an annual flight allowance, attractive accommodation, full medical cover and free school places for two dependent children.





## APPLICATIONS

---

FOR THE LATEST VACANCIES VISIT  
[yangon.dulwich.org](http://yangon.dulwich.org)

---

Interested applicants should apply through [yangon.dulwich.org](http://yangon.dulwich.org) by sending their CV, a recent photograph, a covering letter of application, a statement of their educational philosophy and full contact details of three referees, one of whom should be their current employer.

We will automatically request references for all shortlisted candidates, unless requested otherwise.

Interviews with shortlisted candidates will take place in Yangon, Bangkok or via skype.





## KEEPING OUR STUDENTS SAFE

---

Dulwich College International is committed to safeguarding and promoting the welfare of all the students in its care and expects all applicants to share this commitment.

We follow safe recruitment practices that are aligned to the recommendations of the International Task force on Child Protection. We hold ourselves to a high standard of effective recruiting practices with specific attention to child protection. All appointments are subject to an interview, identity checks, criminal record checks, and successful reference checks. This will automatically include your current employer.

