

SWISS  
INTERNATIONAL  
SCIENTIFIC SCHOOL  
— DUBAI —

2022 - 2023

# Boarding School

GIRLS AND BOYS AGES 11-18

**BASED IN THE HEART OF DUBAI**



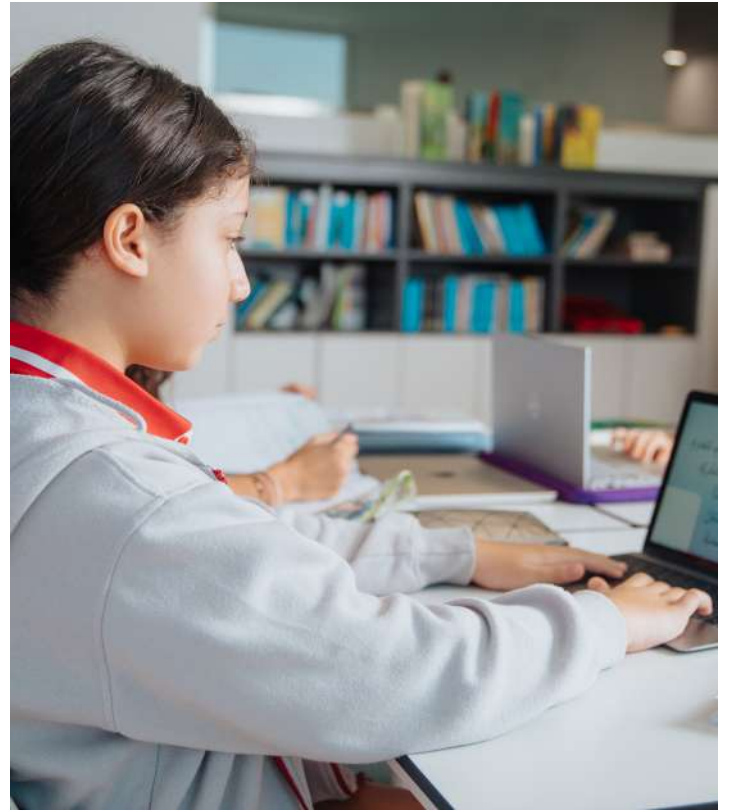
**SISD now ranked as one of the top 100 private schools in the world.**

**SPEARS**  
2022  
SCHOOLS  
INDEX

**CARFAX**  
EDUCATION







*“At SISD each student enters a carefully structured academic programme, drawing from the leading International Baccalaureate (IB) programme.”*

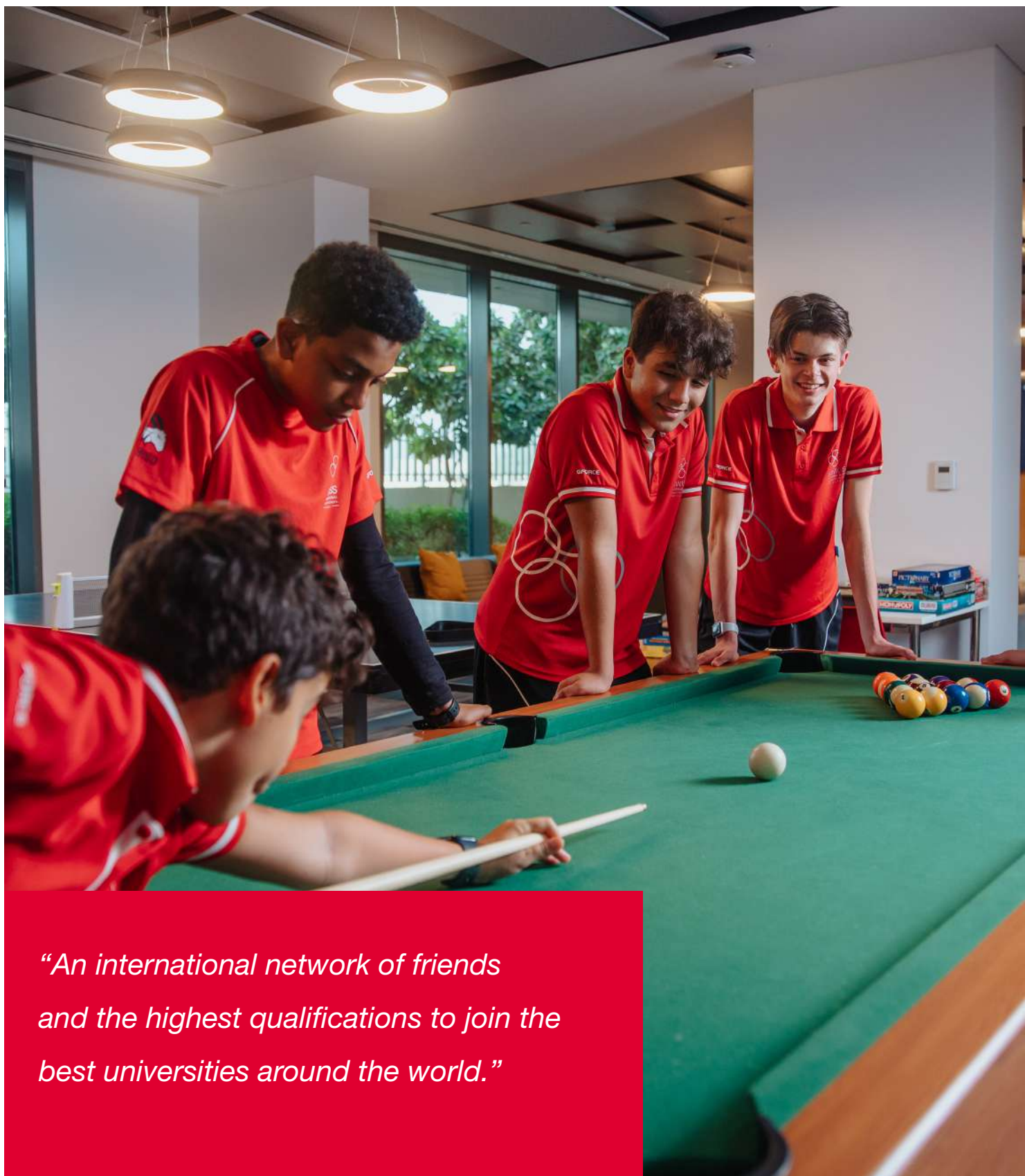


# WELCOME TO SISD

The Swiss International Scientific School in Dubai is a leading day and boarding school where future generations are inspired to become confident and enthusiastic life-long learners, ready to embrace the opportunities of a global world. Our school follows the full continuum International Baccalaureate (IB) programme in English with additional languages or in two bilingual English-French and English-German streams.

SISD is an IB Continuum World School teaching the IB Primary Years Programme (PYP), IB Middle Years Programme (MYP) and IB Diploma Programme (DP). Our unique curriculum offers an engaging learning experience, the challenge of developing a real understanding of cultural diversity and the support of a thriving international community. Our large eco-friendly campus ensures that we can offer a wide range of sporting facilities that make the most of our location adjacent to Dubai Creek.





*“An international network of friends  
and the highest qualifications to join the  
best universities around the world.”*

*I like all the opportunities that are given to our children: they have a chance to socialize and bond. In the evening, they have time to discuss what they have learnt at school, share their ideas. They never feel lonely and there is always something going on – they are certainly never bored!*

***Parent testimonial***



## WHY BOARD AT SISD?

Our experienced boarding staff will guide and support you

Every boarding house has its own carefully selected staff, who care for your welfare and practical needs. They continuously monitor the well-being of all students in a family atmosphere. Our head of houses, deputy heads and tutors are there to not only guide you with your academic studies and interests, but also support you with your emotional needs.

You will make friends for life

We are conveniently situated at the heart of a dynamic, cosmopolitan and culturally diverse city which is on the cutting edge of global development. The international community at SISD enables our boarding students to make lifelong friendships with young people from all over the world, and this extensive contact network will become invaluable throughout your life.

Your academic capabilities will be pushed

It is becoming increasingly clear that an IB education is the global gold standard in a world where children see their futures expanding beyond national borders. For those ready to maintain fluency in French or German alongside their English, our proven immersive approach to bilingual education provides our boarders with a crucial competitive advantage at university and the workplace.



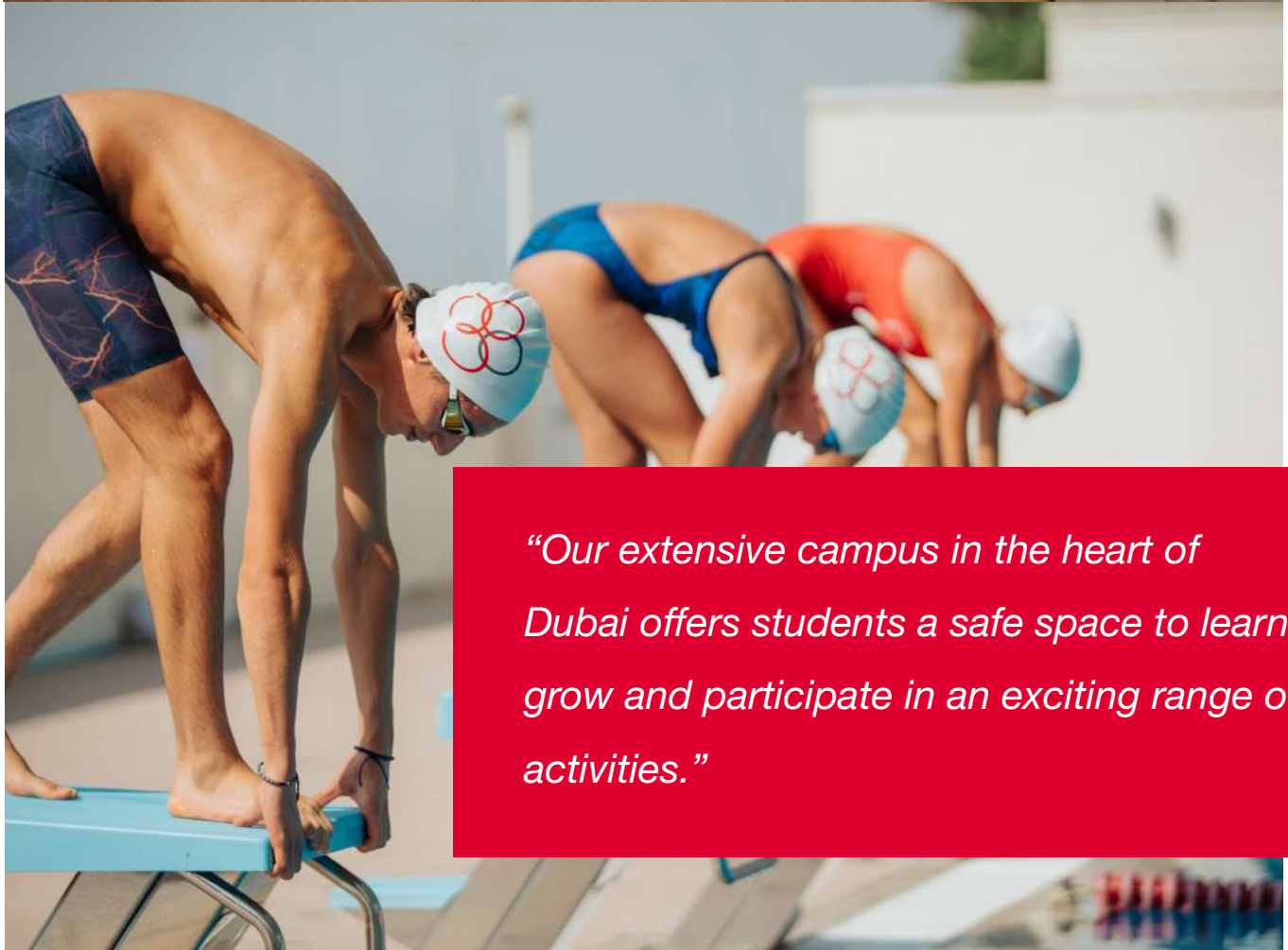
## HOME AWAY FROM HOME

Leaving home can be an emotional time for a young person and their parents. At SISD there is a warm atmosphere on the campus, and particular care is taken to ensure that students are safe, settled and happy. Boarders are well-integrated within our student community and are offered outstanding levels of pastoral care, reflecting our commitment to creating a genuine home away from home. Part of this commitment is ensuring that our boarders have a healthy lifestyle with a balanced diet. Meal times are structured with students and staff eating a warm nutritious meal, served together in the dining room. A nursing service is available on campus, with a sick room accessible. The school doctor is close by and the excellent Mediclinic City Hospital is within ten minutes' reach. One of the many benefits of being a boarder is that tutors are available throughout the week to assist the boarders with their studies. Homework sessions are supervised and help can be provided if necessary.

Filled with natural light, our spacious boarding houses are designed to inspire and engage young minds. Boarders are accommodated in modern and generously-spaced double rooms. Every room has protected Wi-Fi access, air conditioning, integrated en-suite facilities and a private study area. There is also a common room which acts as a social hub to allow boarders to unwind after a long and active day. The boarding houses are positioned in a state-of-the-art campus which aims to stimulate our boarders' curiosity and creativity.







*“Our extensive campus in the heart of Dubai offers students a safe space to learn, grow and participate in an exciting range of activities.”*

## FOOD AND ACCOMMODATION

Food is one of the most important elements of boarding life – it's certainly one of the most common questions from parents and students! We have an onsite catering team and kitchen in our dining hall, that is open 7 days a week. All boarding students enjoy a healthy breakfast every morning before school, lunch in the dining hall with school friends, and then an evening meal with their boarding colleagues. At the weekend, boarding students enjoy a later breakfast / brunch type meal and then either have a BBQ, take-away evening or eat out as part of their social activities.

The menu is varied, developed in conjunction with the students, and rotated every 4 weeks. Each floor of the boarding house also has its own kitchen, and students can make snacks and drinks in their at their leisure. Food is provided by the boarding staff, and students can request their favourite snacks.

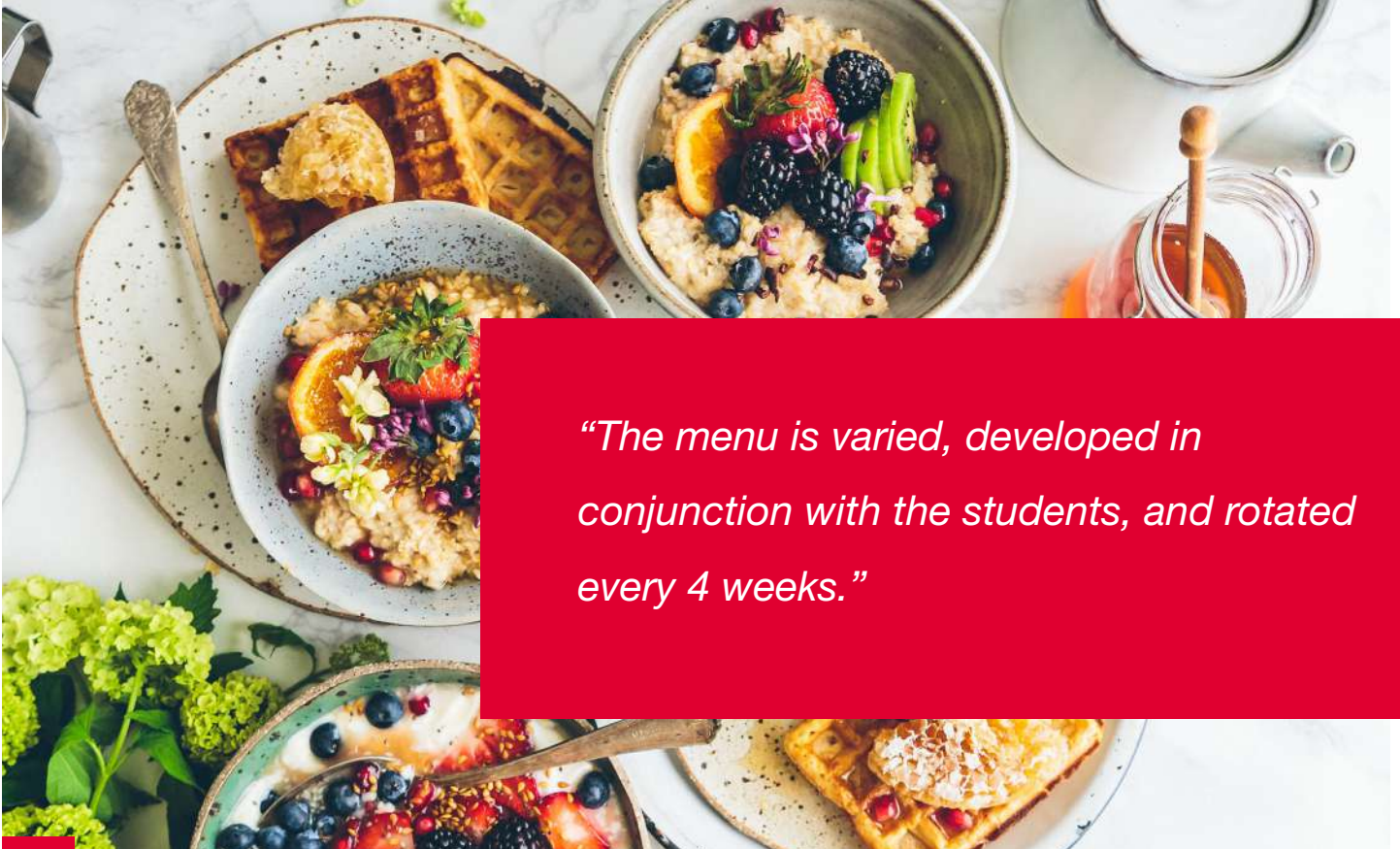
SISD offers full, weekly and flexi boarding accommodation to girls and boys ages 11-18. The newly furnished boarding houses have four floors each, with 14 rooms and en-suite bathrooms in each double room for a total capacity of 100 students per house. Although currently each student has their own private room. Each floor has a fully equipped pantry room and there is a spacious community room full of things to do for when the students have time to relax. The dormitory building also features dedicated apartments for housemasters and tutors.



*As soon as I visited the boarding houses, I immediately felt that it would be a home away from home. The environment is safe, and children are well taken care of and always protected. I love the fact that the staff taking care of them are called house parents: it implies that they care for them, they are here to guide them, always in a positive manner, as a parent would normally do.*

**Parent testimonial**





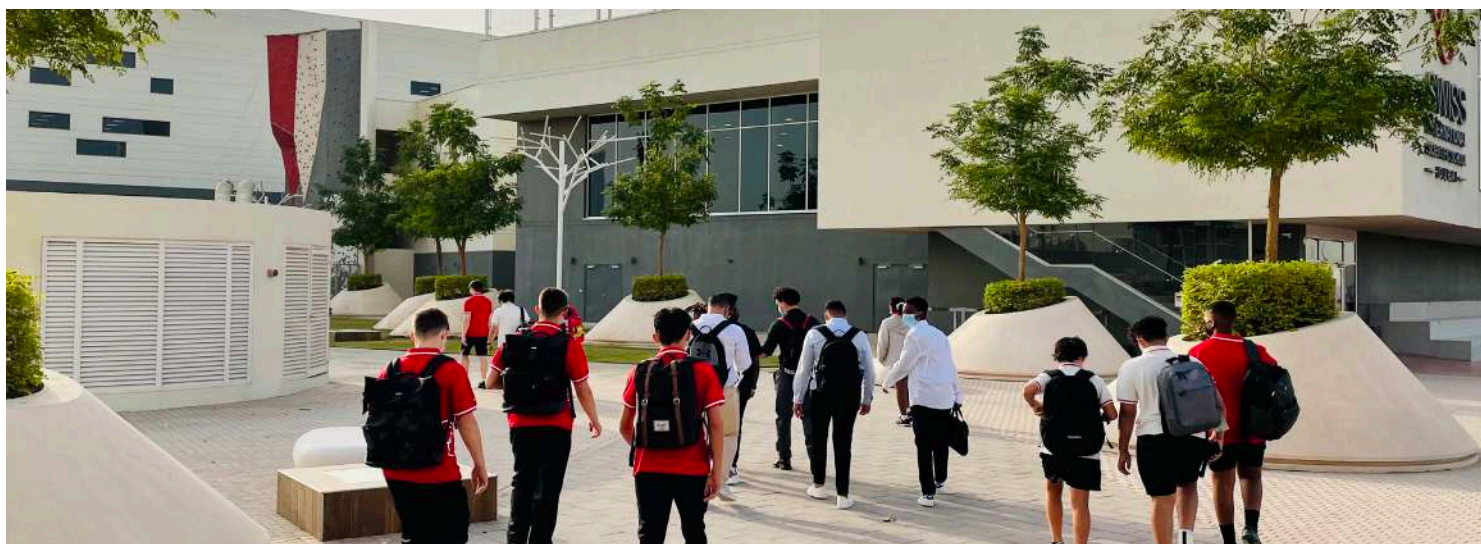
*“The menu is varied, developed in conjunction with the students, and rotated every 4 weeks.”*





*“SISD encourages our boarders to develop into healthy, mature, emotionally intelligent and responsible young individuals.”*





## LEARNING

At SISD we follow the framework of the International Baccalaureate (IB) programme and the Swiss Baccalaureate programme from Grade 6 onwards.

The International Baccalaureate Middle Years Programme is a holistic programme, in that it requires students to develop depth of knowledge across a broad curriculum. The MYP is organised around three main principles: multilingualism, intercultural understanding and holistic learning. The curriculum is organised around building conceptual understanding in a discipline-based model with interdisciplinary units in each year. Students develop academic skills organised into ten skill clusters known as the Approaches to Learning (ATL). The MYP culminates in the new MYP eAssessment suite of onscreen exams and eportfolios for the award of the IB MYP Certificate.

The two year International Baccalaureate Diploma Programme allows students to develop an excellent breadth and depth of knowledge. The Diploma (DP) is a truly international programme, developed in consultation and collaboration with educators from around the world. DP students are prepared for active participation in a rapidly evolving and increasingly global society as they develop intellectually, emotionally, physically and ethically, while acquiring the skills that will prepare them for further education and life in the 21st century.



## BECOME A BOARDER

SISD encourages individuals and parents from all over the world to join our growing community of international students. If you currently live outside of the UAE you may require a student visa to study at SISD as a boarder. We are pleased to inform you that we can manage the entire visa application on behalf of the student and family.

Application procedure:

- Step 1: Fill in the application online
- Step 2: Interview & assessment
- Step 3: Offer & Acceptance

## BOARDING OPTIONS

- Full Boarding
- Weekly Boarding (Monday-Friday)
- Flexi-boarding

*“Full, Weekly and Flexi boarding options available.”*



## FULL BOARDING FEES

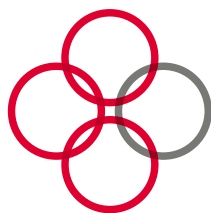
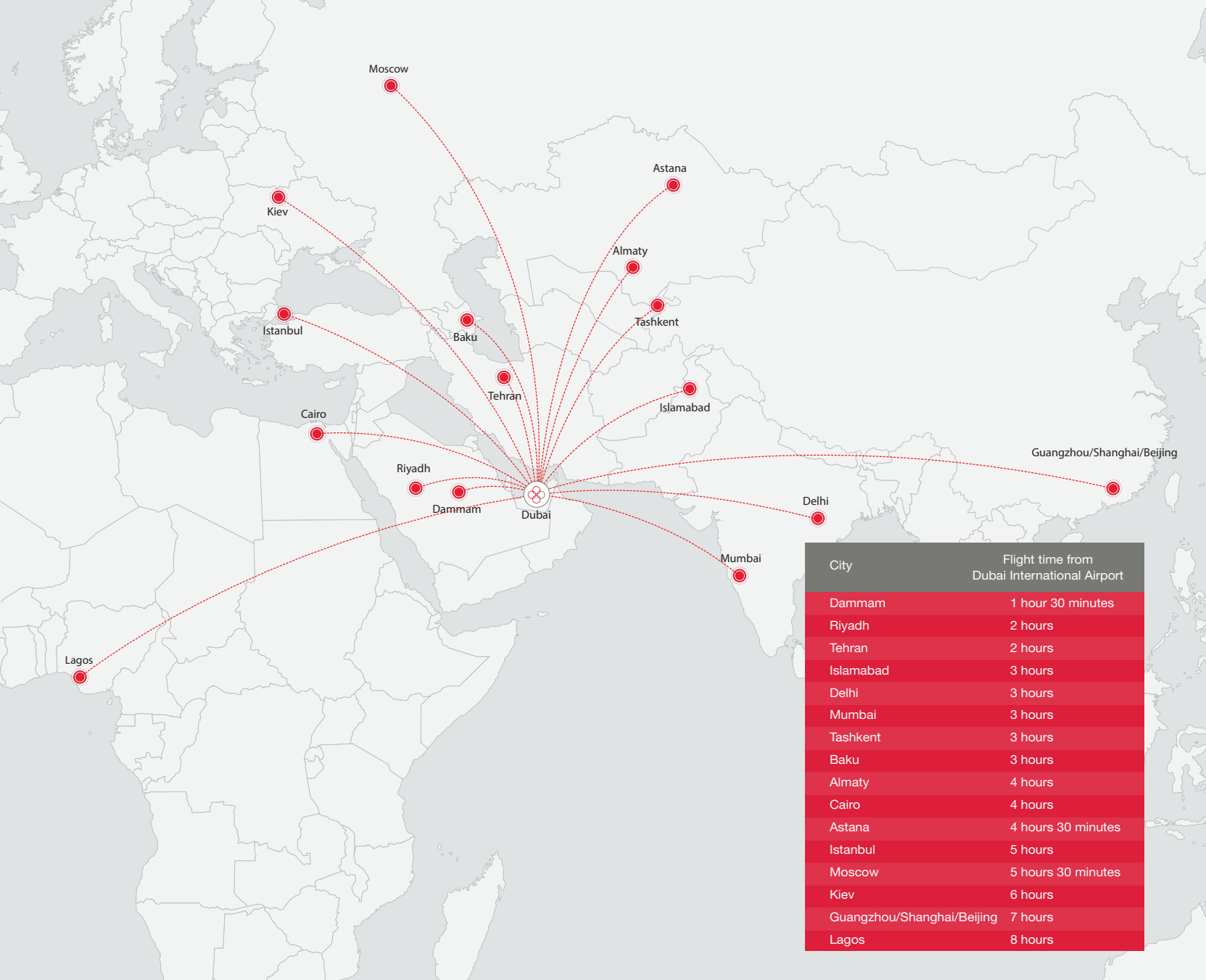
Full boarders spend the whole term on campus and return home during the holidays. Fees are applied to term dates and are inclusive of: school tuition fees, accommodation, all meals and snacks, airport transfer, student visa, ESL/EAL classes, books, examination fees, one set of standard uniform and a selection of after-school activities. Fees do not include: medical insurance, whole school trips, travel, personal items and some external weekend & after-school activities. A non-refundable registration fee of 13'620 USD (50'000AED) is required. This amount is adjustable against the final annual payment. An upfront discount of 5% is applied when the full amount is paid within 14 days of the offer.

Grade	Total fees - AED	Total fees - USD
Grade 6	224,500	61,160
Grade 7	224,500	61,160
Grade 8	224,500	63,060
Grade 9	231,500	63,060
Grade 10	231,500	63,060
Grade 11	239,700	65,300
Grade 12	239,700	65,300

## WEEKLY BOARDING FEES

Weekly boarders spend five nights per week on campus and return home during the weekends. Fees are applied to term dates and are inclusive of: school tuition fees, accommodation, all meals and snacks, ESL/EAL classes, books, examination fees, one set of standard uniform and a selection of after-school activities. Fees do not include: medical insurance, whole school trips, travel, personal items and external after-school activities. A non-refundable registration fee of 13'620USD (50'000AED) is required. This amount is adjustable against the final annual payment. An upfront discount of 5% is applied when the full amount is paid within 14 days of the offer.

Grade	Total fees - AED	Total fees - USD
Grade 6	153,100	41,680
Grade 7	153,100	41,680
Grade 8	153,100	41,680
Grade 9	161,500	43,970
Grade 10	161,500	43,970
Grade 11	166,900	45,440
Grade 12	166,900	45,440



**SWISS**  
INTERNATIONAL  
SCIENTIFIC SCHOOL  
— D U B A I —

📍 Dubai Healthcare City – Phase 2 Al Jaddaf Dubai

✉ admissions@sisd.ae

☎ + 971 (0)4 375 0600

[www.sisd.ae](http://www.sisd.ae)

STAY CONNECTED WITH SISD

