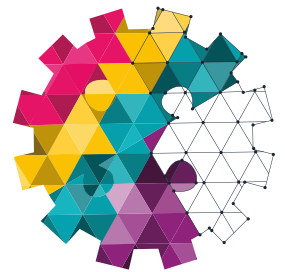


YEAR 10 & SIXTH FORM **PROSPECTUS**



Crewe Engineering
& Design UTC



WE ARE
INDUSTRY READY



PRINCIPAL'S WELCOME

Crewe UTC provides students with a unique opportunity.

We deliver a specialist engineering curriculum for students starting in Year 10 or Year 12. Our unrivalled real-world engineering and design experiences, delivered in state of the art facilities, are combined with excellence in English, Mathematics and Science.

Our employer partners support us to ensure the student experience is at the cutting edge of the modern engineering and design sector, giving every young person the opportunity to progress into highly sought-after apprenticeships, further education and skilled positions in the workforce.

Our dedicated team of teachers and pastoral staff support all students to make excellent progress and ensure they graduate Industry Ready.

Mr W Chitty
Principal

WHY ENGINEERING & WHY CREWE UTC?

The town of Crewe has built a reputation as one of the world's greatest railway workshops and today is home to leading engineering firms such as Bentley Motors. Engineering is at the heart of everything we do and we're proud to work with industry partners to help our students develop technical skills required for the workplace.

DID YOU KNOW?

- Average engineering graduate salary is £33,725
- There's a shortage of Civil, Mechanical, Electrical and Design & Production Engineers, with vacancies at an all-time high

WE DO THINGS DIFFERENTLY

We only teach Year 10, Year 11 and Sixth Form.

We teach our specialist engineering curriculum, not the EBACC.

We're small enough to offer a highly personalised academic and pastoral experience where every student is known as an individual.



OUR FACILITIES ARE TRULY UNIQUE

Our state-of-the-art engineering workshop and machinery are the envy of most schools, and even some universities. This means that from Year 10, our students are exposed to a real-world industry environment and have the opportunity to use:

- **CNC Milling Machines**
- **Industry laser cutters**
- **3D Printers**
- **Augmented and virtual reality head sets**
- **State of the art CAD software**

MODERN, PURPOSE-BUILT CAMPUS

Crewe UTC is a purpose-built site, that opened in 2016 specifically for the teaching of Engineering.

Our campus provides our students and staff with a bright, airy, modern working environment with social areas, canteen and study zones.



INDUSTRY PARTNERS

Working closely with industry partners is central to our proposition and teaching. They support our students with:

- **employer talks and masterclasses**
- **real-world industry projects**
- **work experience placements**

OUR INDUSTRY PARTNERS INCLUDE: Balfour Beatty



WE ARE INDUSTRY READY

Our integrated curriculum ensures the principles of excellent engineering and design underpin all learning.

Employer set projects and industry placements contextualise and legitimise each students' learning.

Our professional expectations and competencies mirror that of our most successful industry partners.



YEAR 10 & YEAR 11

PASTORAL SUPPORT & TRANSITION FROM YEAR 9

We know it's a big decision to move schools at the end of Year 9. That's why we prioritise pastoral and SEND support to students and families to help the transition into Crewe UTC.

We're small enough to quickly develop close relationships with all students and our induction programme helps students settle with us as smoothly and quickly as possible.

Remember, everyone starting in Year 10 is new to Crewe UTC.

WEEKLY EMPLOYER ASSEMBLIES

Each and every week of the year one of our 40 partners delivers an industry talk. These include:

- Bentley
- Balfour Beatty
- Alstom
- Whitby Morrison
- Network Rail
- RAF



YEAR 10 & YEAR 11 CURRICULUM

WE ARE DIFFERENT

Year 10 and Year 11 students follow our specialised curriculum, which is split into three focus areas. Students also have weekly PE and PSHE sessions:

GCSE Subjects	Engineering and Design	Option Subjects (Select One)
English Language	Engineering Manufacture (OCR Cambridge National)	Art & Design GCSE
English Literature		Business Studies GCSE
Mathematics	Design & Technology (GCSE)	Photography GCSE
Combined Science		ICT Cambridge National
5 GCSEs	2 GCSEs or equivalent	Engineering Programmable Systems Cambridge National
		1 GCSE or equivalent



THE COLLEGE DAY

Arrive	8.00 - 8.25	Free Breakfast Available
Registration	8.30 - 9.00	
Period 1	9.00 - 10.00	
Period 2	10.00 - 11.00	
Break	11.00 - 11.15	
Period 3	11.15 - 12.15	
Period 4	12.15 - 13.15	
Lunch	13.15 - 13.45	
Period 5	13.45 - 14.45	
Period 6	14.45 - 15.45	(Monday – Thursday)



BEYOND YEAR 11

FORMER STUDENT PROFILE

Name: Jack Cartlidge
Attended Crewe UTC: 2017 - 2021 from Year 10
Current position: Test Engineering Degree Apprentice at Siemens



APPRENTICESHIPS OR SIXTH FORM

Our engineering students typically stay with us into Sixth Form, pursuing one of three pathways suitable for learners at all stages.

Our T Level, BTEC Double and Foundation Engineering pathways all provide students with high quality opportunities in further education and apprenticeships.

SIXTH FORM ENGINEERING COLLEGE

We welcome students from schools across the region into our Sixth Form. The flexible pathways below enable access to our engineering courses via three different entry points at Year 12.

Entry Point	T Level Pathway 2 Years	BTEC Pathway 2 Years	Foundation Pathway 1 Year		
Entry Grades	5 GCSEs at Grade 4 or above (including Maths & English)	5 GCSEs at Grade 3 or above (including Maths & English at Grade 4)	5 GCSEs at Grade 1 or above (including Maths & English at Grade 2)		
Qualifications	T Level Engineering* 45 day industry placement Engineering, manufacturing, processing & control Maintenance, installation & repair Design & development * equivalent to 3 A Levels	BTEC Level 3 Diploma in Engineering A Level 3D Design GCSE English Resit (if grade less than 4) GCSE Maths Resit (if grade less than 4)	BTEC Level 3 Engineering GCSE English Resit (if grade less than 4) GCSE Maths Resit (if grade less than 4) ICT & Business Qualifications		
			Option 1 Start T Level as Year 12	Option 2 Continue into Year 13 to convert to BTEC Level 3 Diploma in Engineering	Option 3 Move into employer apprenticeship

T LEVEL ENGINEERING

This **prestigious qualification** is the equivalent to three A Levels, and includes an in-depth industry placement.

OUR INDUSTRY PARTNERS INCLUDE:



SIXTH FORM CURRICULUM

The Sixth Form curriculum has been designed in partnership with industry partners so that students can develop the most appropriate skills, attributes and experiences for a career in engineering.

During their time at Crewe UTC, students will learn how to solve contemporary engineering challenges using industry-leading technologies such as CNC Router and Milling Machine (Computer Numerical Control), Virtual and Augmented Reality, 3D Printer and Computer-Aided Design.

UCAS GUIDANCE

Every student will receive advice and guidance to support applications for apprenticeships and university courses.

FORMER STUDENT PROFILE

Name: James West
Attended Crewe UTC: 2020 - 2022 in Sixth Form
Current position: Electrical Engineering Degree Apprentice at Siemens



FORMER STUDENT PROFILE

Name: Malaika Jamil
Attended Crewe UTC: 2018 - 2022 from Year 10
Current position: Civil Engineering Degree Apprentice at Volker Rail



STUDENT DESTINATIONS

We are immensely proud of the onward steps our students have taken after leaving Crewe UTC. These include:

Further & Higher Education

Cheshire College South & West
Liverpool Hope University
Liverpool John Moores
Manchester
Metropolitan University
Nottingham Trent University
Oxford Brooke's University
Reaseheath College
Sheffield Hallam
Solent University
Staffordshire University
The Open University
University of Chester
University of Derby

Apprenticeships

Alstom
Arriva Traincare
Audi
Bentley
Cobalt Systems
Coorstek Engineering
Gateway Electronics Ltd
Gloversure Software
James Walker
Mastermovers
Network Rail
Pentagon Engineering
Rolls-Royce
SB Interior Design
Siemens
Uni Part Rail
Volker Rail

Employment

Audi
BAE Systems
Bentley
BMW
Jaguar
Kia Motors
Liverpool University NHS
MSV Motor Sports
Omua
Protea
Royal Airforce
Royal Navy

HOW TO APPLY

We are now accepting admissions for Year 10 and Sixth Form.

You can apply online at
www.utccrewe.co.uk

01270 218 150
admissions@creweutc.org.uk

West Street, Crewe CW1 2PZ
(access via Meredith Street)



**Crewe Engineering
& Design UTC**



Crewe Engineering & Design UTC
is part of 'The Learning Partnership';
a multi-academy trust with schools across
East Cheshire and North Staffordshire.