



## Options BESD

Services specialising in care and education  
for young people with behavioural,  
emotional and social difficulties.



## Contents

3	About Options
4	Our Approach
5	BESD Journey
6	Children's services
16	Fostering service
18	Outreach service

## About Options

Options provide a range of care services to children, young people and adults with autism, complex needs and behavioural, emotional and social difficulties. Due to the breadth of our services we are able to adapt to the needs of the individual at different points in time, whether that be increasing or decreasing the care required. This enables us to provide a range of care options within a journey of support for our young people and their families. We share every step of that journey with them.

**Options BESD provides care to children and young people with behavioural, emotional and social difficulties. Providing a continuity of service which emphasises lifelong learning, delivered in environments where children and young people can feel nurtured and secure.**

We hope you find this booklet helpful. To find out more about our services and how to access them, visit our website [www.optionsgroup.co.uk](http://www.optionsgroup.co.uk), email [info@optionsgroup.co.uk](mailto:info@optionsgroup.co.uk) or call 01798 767 800



Music room at Options College Shifnal



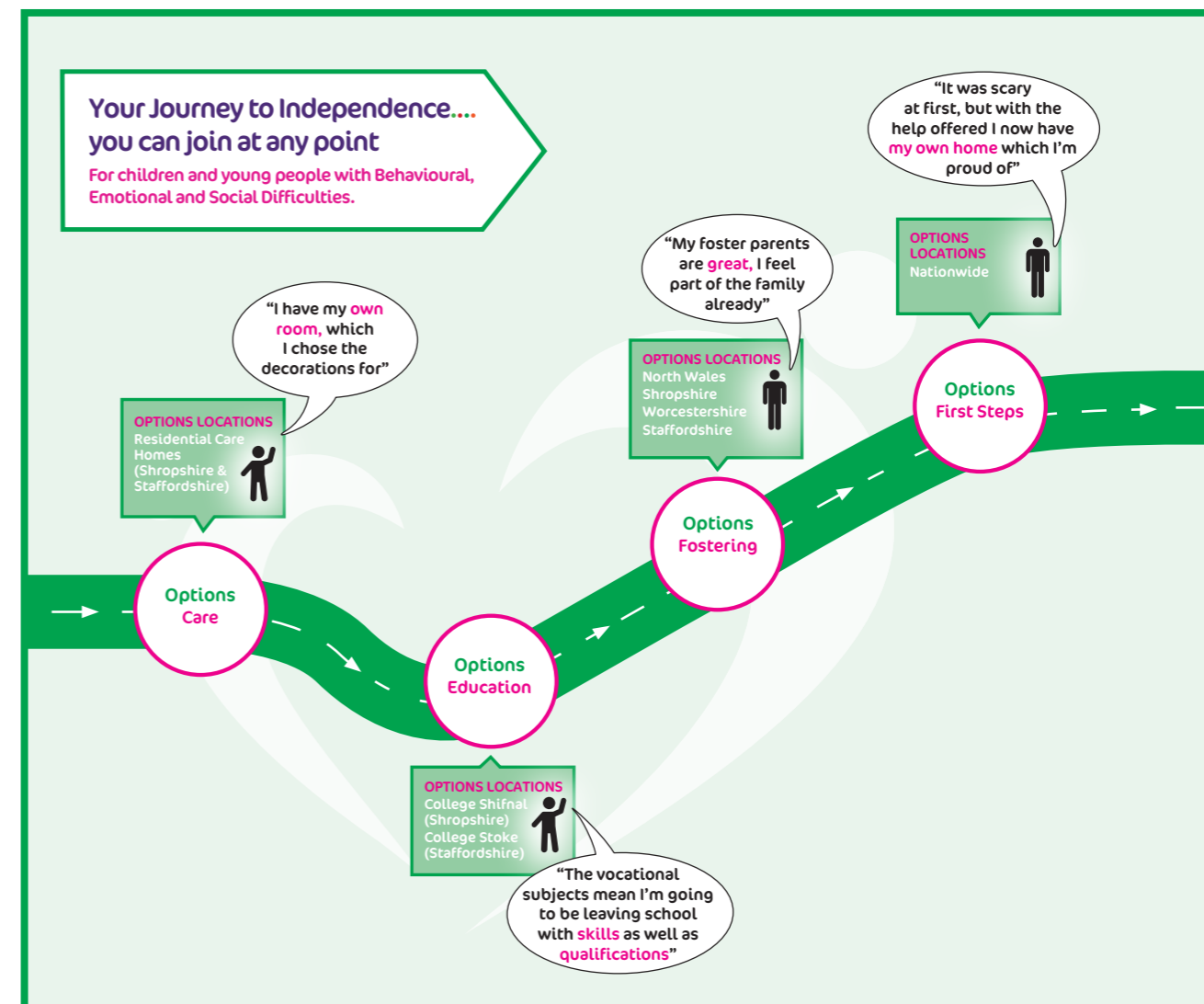
## Our Approach

Each individual is different, meaning what they need from us is different, that's why we adapt our packages of care depending on each individual's needs, right from the point of placement with Options throughout their journey with us.

We use a person-centred approach to plan and deliver outcome-focused care. Adopting a shared theoretical understanding and language based on Complex Trauma (Cook et al 2003) we have developed a Core Practice model which underpins the way we live and learn with the children and young people placed with us.

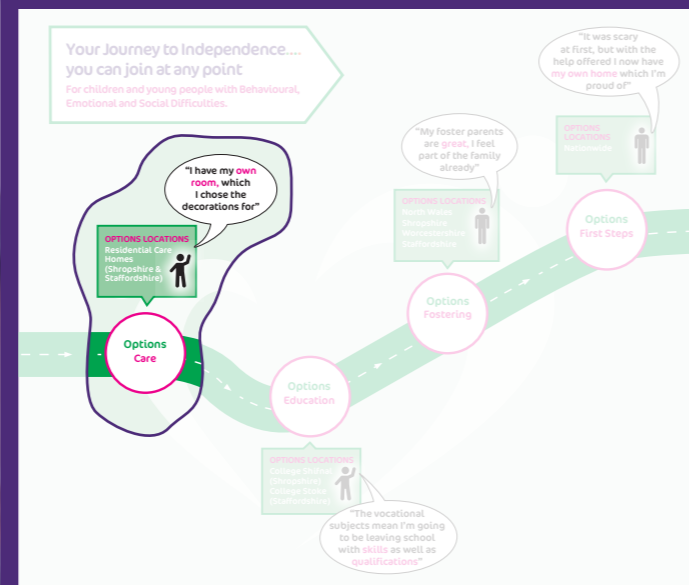
Dedicated clinical services accessible from all of our services, delivered through a core team of embedded clinicians.

## BESD ... Journey of care





## Our Services Options Care



Offered alongside or independently from Education, providing a caring, structured and homely environment. Each young person follows their own specifically designed programme, in an atmosphere of high expectations, where they are valued for themselves. The overall objective is to create the ideal conditions for each to succeed, to the maximum of their potential, to prepare for living as independently as possible and fulfilling adult life.

**Please note:** In order to safeguard the children in our care, we do not publish location and specific details of our homes. However, this booklet provides an overview of what our residential children's homes offer.

## Residential Children's Homes

Located across Shropshire and the surrounding areas, our 16 homes offer a safe, nurturing and homely environment for children and young people to flourish.

Our homes are small, homely and designed to ensure that all of the young people in our care feel safe and secure whilst developing their independence. Located in suburban communities, our homes allow the young people to be involved in the running of their homes by taking responsibility for tasks such as shopping and budgeting, enabling them to develop social, communication and life skills in the right surroundings.

**Each child or young person has an allocated therapist and each home has an allocated clinical team member who attends weekly to fortnightly team meetings and additional meetings as needed; facilitating reflective practice and providing bespoke training, advice and consultation.**

Lamlodge Lane, Shifnal, Shropshire, TF11 8SD

01952 468 220

info@optionsgroup.co.uk



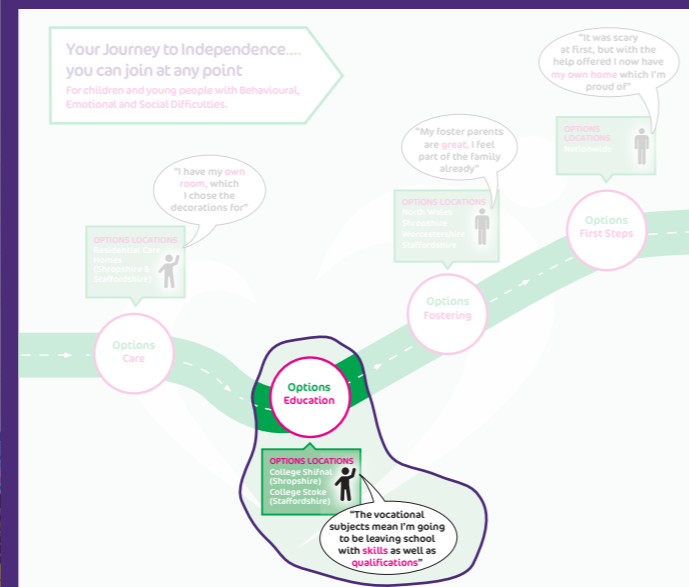
Lounge at Options Residential Children's Home



Bedroom at Options Residential Children's Home



## Our Services Options Education



We believe that education should be delivered in the way that is most appropriate and most conducive to the individual learning needs of the students.

Many students arrive having experienced multiple placement breakdowns and with little experience of formal education and as such we offer both intensive and small group teaching.



Hair salon at Options College Stoke



Kitchen at Options College Stoke

Our detailed assessment and induction processes enable us to assess students' individual learning styles and plan their learning targets in partnership with them.

As well as offering nationally accredited courses such as GCSE, AQA Entry Level Certificates and Units, ASDAN, CLAIT and BTEC Vocational Skills qualifications, we run practical activities onsite that promote the development of life skills.

**"She has struggled in the past to build positive relationships with young people, the support from staff at College is helping her with this. Having a mentor, who is a positive influence, is also helping her to settle in."**

Relative



## Options College Shifnal

Options College Shifnal provides a bespoke educational service in a DfE-registered school, for children and young people with complex behavioural, psychological and psychiatric difficulties. It is the first step on the Options BESD journey of care to help our young people become closer to independence.

- 7-19 yrs
- Mixed gender
- Day school or full education and residential offered via Options Residential Children's Homes
- On site facilities include: Sports hall, vocational unit and Acorn centre - our on site clinical suite.

**"By accessing Options College Shifnal for a further year I believe she will better prepared for adult life."**

Parent

Lamlidge Lane, Shifnal, Shropshire, TF11 8SD

01952 468 220

[collegeshifnal@optionsbesd.co.uk](mailto:collegeshifnal@optionsbesd.co.uk)

[www.optionsgroup.co.uk/collegeshifnal](http://www.optionsgroup.co.uk/collegeshifnal)



## Options College Stoke



**Students who enter the college with negative attitudes to education achieve more than they thought possible, often in a short period of time."**  
Ofsted report 2014

A DfE-registered school set in the heart of Longton, Options College Stoke is a purpose-built school with dedicated on-site facilities as well as established links with the amenities offered in Stoke and the nearby towns.

Awarded with an Outstanding Ofsted in 2014, the college provides integrated care, education and therapy for young people with complex behavioural, psychological and psychiatric difficulties.

- 11-19 yrs
- Mixed gender
- Day school or full education and residential offered via Options Residential Children's Homes
- Small class sizes

Phoenix House, Marlborough Road, Longton, Stoke-on-Trent, Staffordshire, ST3 1EJ

01782 320 773

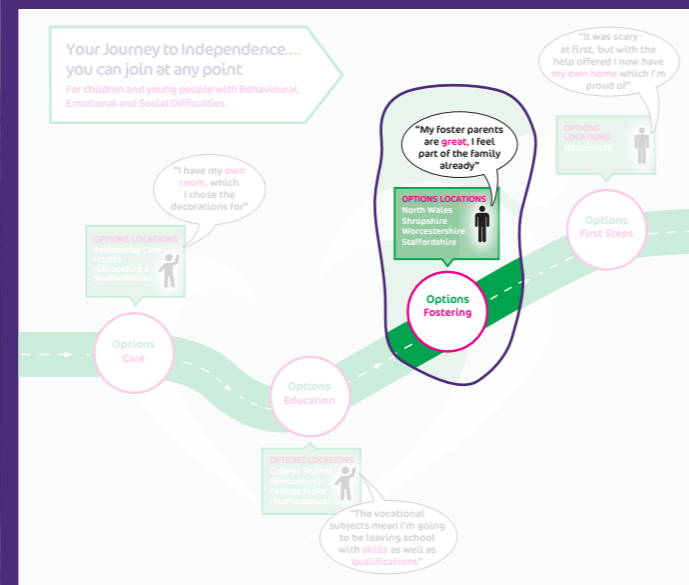
[collegestoke@optionsbesd.co.uk](mailto:collegestoke@optionsbesd.co.uk)

[www.optionsgroup.co.uk/collegestoke](http://www.optionsgroup.co.uk/collegestoke)





## Our Services Fostering



A specialist fostering service for children and young people with complex behavioural, emotional and social difficulties. We specialise in placing young people that have experienced disruption in their lives and require stable and consistent family environments.

At Options Fostering we witness the positive benefits professional family placements can bring to children's lives, not just in the present but during adult life. Options Fostering prides itself on working with carers who provide 'forever families'.

- Placements across the West Midlands, North Wales, Shropshire, Worcester and Staffordshire.
- Children and young people aged 0 – 17 with BESD, psychological and psychiatric difficulties
- Planned and emergency, short and long term fostering placements

**"My foster dad is awesome and my foster mum is amazing; she's like a mum."**  
Young person

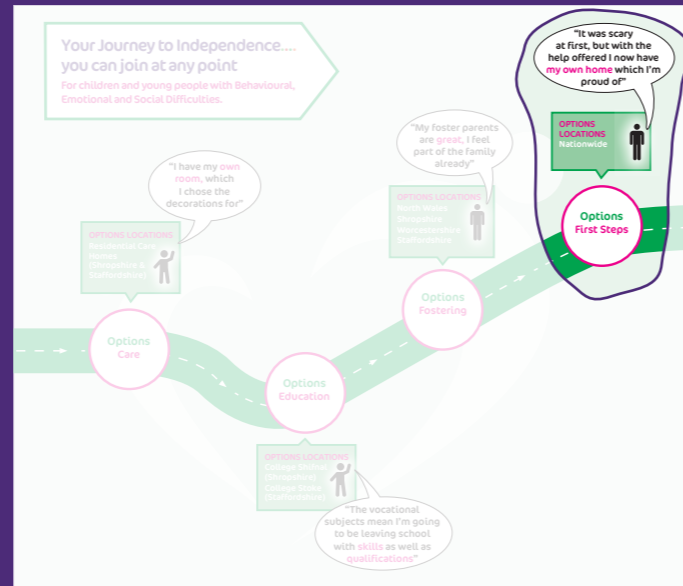


Lamlodge Lane, Shifnal, Shropshire, TF11 8SD  
0800 630 0864  
info@optionsfostering.co.uk  
www.optionsgroup.co.uk/fostering

## Our Services Outreach

A highly successful service located in the West Midlands providing people aged 16+ with individually tailored care pathways to independent living. From transition services for those leaving residential care to supported living services for those ready to make that step, Options Outreach 'First Steps' focuses on promoting positive community integration.

As a key part of the Options BESD journey of care, the service enables young people who are leaving care to make the transition to independent living with the security of planned, consistent and comprehensive support.



info@optionsgroup.co.uk

01782 320 773

## Your Notes & Questions



**Options Group**

Turnpike Gate House  
Alcester Heath  
Alcester  
Warwickshire  
B49 5JG

tel: 01789 767 800  
fax: 01789 767 801  
email: [info@optionsgroup.co.uk](mailto:info@optionsgroup.co.uk)



[optionsgroupuk](https://www.facebook.com/optionsgroupuk)



[Options Group](https://www.linkedin.com/company/options-group)



[@options\\_care](https://twitter.com/options_care)

[www.optionsgroup.co.uk](http://www.optionsgroup.co.uk)



INVESTORS  
IN PEOPLE | Gold