



# Prospectus

## Ashbrook Campus

2025-2026

# Introduction

This School is a registered and accredited Independent School established to provide a quality education to the UK community and, in particular, to Brethren students.

The School's Ethos, Values Statement and Guiding Principles govern the School and are reflected in our policies and procedures, all of which meet statutory and registration requirements for Independent Schools.



# Contents

About OneSchool Global	4
OneSchool Global Ethos	5
OneSchool Global Vision and Mission Statements	6
Learning to Learn Framework	7
Student Persona	8
OneSchool Global Values	9
Welcome	10
History	12
Global House System	13
Our Curriculum	16
OneSchool Global Awards	17
OSG Accelerate	18
Policies	20
Teachers and Staffing	21
School Information	22
Testimonials	24

# About OneSchool Global UK

OneSchool Global is a global school, with over 120 campuses in 20 countries, including cities such as New York, Paris, Sydney, Rome, Auckland, Copenhagen, Los Angeles and San Francisco.

With an innovative approach to learning, delivered in cutting-edge, technology-empowered physical and digital learning environments, OneSchool Global is preparing life-ready students who learn how to learn, and achieve.

Our self-directed learning model places students at the centre of all that we do. We challenge traditional and dated pedagogy and embrace technology to deliver the best possible learning outcomes for our students.

OneSchool Global recruits and develops high quality teachers. Our teachers partner with our students in their learning and rather than being considered the 'sage on the stage', they act as both teacher and coach to build students' skills, resilience and independence.

Our in-house Teacher Academy provides teachers with the training they need to be the best they can be. We provide teachers with the skills they need to be successful at OneSchool Global and skills that will make them highly capable and competent in teaching in a digital world.

OneSchool Global is a school that lives its values and is guided by the School's ethos. The School is generously supported via the donation of time and financial support from members of the Plymouth Brethren Christian Church.



**Click on the OneSchool logo** to learn more about how this cutting-edge schooling system was inspired and how this awesome vision is being realised.



## OneSchool Global Ethos

**At OneSchool Global, we are committed to a culture where students are encouraged to develop their full potential and acquire the discipline of learning how to learn while upholding Christian teachings and beliefs.**

The truth and authority of the Holy Bible and strong family values underpin the commitment of the School to provide quality in every facet of education - curriculum, teachers, facilities, management, and discipline - in a safe and caring environment.

# OneSchool Global Vision Statement

**A global education ecosystem** that develops life-ready students who **learn how to learn and achieve.**

To ensure our students are life-ready, we need to teach differently. To be life-ready in today's world, our students need to learn how to learn. To be life ready, our students need to develop independent and critical thinking skills, and skills such as teamwork and collaboration.

It is these skills that form an aptitude base that allows a student to adapt. Most importantly, these critical skills are transferable. When industry changes, when entire fields of work and job types are no longer required, it will be the life-ready, critical thinkers who stand the test of time and find new ways to add value.

We are prepared to do things differently at OneSchool Global to deliver on this vision. We challenge traditional and outdated pedagogical models. Our learning centres, the way we embed technology in them, and ultimately our students, are a testament to this.

# OneSchool Global Mission Statement

*Learning to learn*

The School is committed to creating and delivering learning programmes that meet the educational needs of each student, and to nurture the attitudes and skills necessary for the continual learning and personal growth throughout life.

“Learning to Learn” means to use learning as a tool whereby students are equipped with the ability to think critically, process information perceptually, analyse data accurately, and evaluate situations intelligently in order that they fulfil their true potential.

# Learning to Learn framework

## The Assignment



- is a contract that establishes
  - » what the teacher needs to teach
  - » what the student can learn on their own
  - » what the student needs to do to demonstrate their learning
- is anchored by a Big Question
- aligns to the curriculum
- provides choice and tailored pathways
- defines learning intentions, success criteria
- includes clear checkpoints, deadlines and feedback
- contains formative and summative assessments
- is shared between students, teachers and Campuses

## The Lesson

- is teacher led
- is time for 'what the teacher needs to teach'
- enables direct instruction
- involves the whole class



## The Study

- is student led
- is where students make a plan and execute it
- is time to work on tasks contained in The Assignment
- includes focused, semi-collaborative and collaborative learning
- enables coaching from teachers and peers



## The Tutorial

- provides students with 1:1 (or small group) specialist support
- can be requested by students or teachers
- enables individualised support and extension



*Learning to learn*

# A Quality OSG Student...



## Lives the Values:

Committed to displaying integrity and care & compassion, is respectful of others and takes responsibility for their actions.



## Is Self-Directed:

Understands the Learning to Learn Framework and is driven by personal goals, initiative, and self-discipline to grow and achieve.



## Is a Team Player:

Builds strong connections with educators, on foundations of trust and respect. Is collaborative and supportive of others in achieving common goals.



## Is Diligent:

Committed to excellence, hard work and timeliness in all responsibilities and tasks.



## Is a Problem Solver:

Seeking innovative, creative and effective solutions to challenges and obstacles.



## Takes Ownership:

Wears school uniform with respect, manages distractions maturely, and makes good decisions about behaviour and attitude.



## Has a Positive Attitude:

Applies constructive thinking and has a positive approach to school.



**A global education ecosystem that develops life-ready students who learn how to learn, and achieve.**

# OneSchool Global Values

At OneSchool Global each student, parent and staff member shall uphold the values of the School which include:

## Integrity

uprightness, honesty and decorous conduct, governed by the Holy Bible

## Care and Compassion

kindness, consideration and generosity to all

## Respect

for all people, property, opinions and those in authority

## Responsibility

for our actions, progress and the environment

## Commitment

to self-discipline and the pursuit of excellence

# Welcome Message



Welcome to OneSchool Global UK Ashbrook Campus.

We are delighted to welcome you to our prospectus and to introduce you to our fantastic Campus based at Ashbrook in Warwickshire.

At our Campus we develop learners who “learn how to learn”. We facilitate this learning through supporting the OneSchool Global forward-looking and pioneering approach to education. While academic excellence has and always will be a priority, OneSchool challenges dated educational practices and processes with a SelfDirected Learning program. We

place the focus on what and how students are learning, rather than merely on what is being taught.

Our students are at the centre of everything we do at Ashbrook Campus. Every day we seek to provide the very best educational experiences to support our students in reaching their full potential. We are proud to belong within OneSchool and to play a part in a global education ecosystem that develops life-ready students who learn how to learn. We strongly promote and seek to uphold the OneSchool values of Integrity, Care and Compassion, Responsibility, Respect and Commitment.

To help provide the very best education we work closely with OneSchool Global to develop high quality teachers. Our teachers partner with our students in their learning and rather than being considered the ‘sage on the stage’, play a ‘guide on the side role’ to support students.

Overall our Campus is happy, positive, and welcoming, underpinned by a relentless focus on continuous improvement.

**Mr Mark Bass**  
Lead Campus Administrator



Campus Principal - **Mr Harpinder Singh**





## Our History

Ashbrook Campus opened its doors in 2026 and is the result of the merger of our Atherstone and Nottingham campuses.

From our beginnings in the 1990's, OneSchool is now one of the world's largest and most comprehensive, truly global schools.

With over 8,000 students, 120+ campuses and more than 2,000 staff and volunteers operating across 20 countries, OneSchool's global education ecosystem provides an environment in which our staff and students thrive.

## The Global House System

The Global House System is based around the ethos of inclusion and encouraging teamwork.

It is designed to reward academic work, effort, sporting achievements and good citizenship. It is the role of the House System to embrace all students and provide a climate of success for all.

The Global House System consists of three houses each with an assigned colour as shown below. These houses are run globally throughout our affiliated schools, meaning that we can encourage teamwork with other regions, not just within our campus, thus enhancing our students' desire to strive for their best, due to a much wider area of healthy and constructive competition.

Each student is assigned to a House and will normally remain in that House for his/her duration at the campus. Many house events and competitions are run which link to learning and help foster both teamwork and self-directed learning skills. The Global House System encourages healthy participation in activities and is well supported by staff and student leaders.



## Charitable Fundraising

At Ashbrook Campus the whole community is committed to helping those less fortunate than ourselves.

There is a strong, student-led culture for fundraising and charity at Campus. The majority of fundraising initiatives are student-led, with representatives from our student leadership team coming up with ideas for school-wide events. Not only does each initiative raise hundreds of pounds for charity, but it also gives students valuable experience, enabling them to develop leadership skills and promote our OneSchool values.

Charitable donations made in recent years include:

-  Rapid Relief Team
-  Operation Christmas Child
-  Collection for our local



“ We are thrilled with the **progress** that has been made in many aspects at our Campus over the 3 years that our son has been there. **Thank you!** **Parent** ”

# Our Curriculum

...wholly supports the School's ethos in promoting Christian values and provides a balance, ensuring students develop academically, aesthetically, morally and physically.

The Campus has adopted the Curriculum Policy developed by OneSchool Global UK. The curriculum is designed to ensure that every student can realise their potential. The curriculum is assignment-based, enabling the self-directed ambition of the organisation to be fulfilled. All students follow a personalised and challenging curriculum.

Cambridge International A Level qualifications are offered in Art & Design, Design & Technology, English, History, Geography, Mathematics, Accounts, Law, Business Studies, French and German, and Global Perspectives alongside Cambridge Technical qualifications in IT, Digital & Creative Media, a range of Level 2 qualifications, and Autodesk Fusion 360.

Additional subjects include Physical Education and PSHE, while courses such as Chef Skills, LAMDA Speaking in Public, and Extended Project Qualifications are available to students.

Digital technology, including Zoom and Canvas platforms enable campuses to collaborate with other schools for subject delivery which enables students to study subjects that would not normally be economically viable.

Xello and the OSG Accelerate Programme also adds a unique and high quality vocational element to our curriculum which supports all students in gaining a better understanding of their career pathway and progression routes helping to ensure they are life-ready on graduation from OneSchool Global UK and excited about embarking on future post graduate qualifications.

Extra-Curricular activities are a strength of our school. Our students have the opportunity to collaborate on extra-curricular projects and activities at campus, regional and global level. Recent highlights including our termly Choir Festival, annual Public Speaking Competition and inter campus debating opportunities. Our extra-curricular offer is a key part of our curriculum and an area of continuous growth and development for OSGUK.

## Years 3-6

Art  
Design & Technology  
English  
Geography  
History  
IT  
LAMDA  
Mathematics  
MFL  
Music  
PSHE  
Physical Education  
RSE  
Science

## Years 7-8

Art  
Citizenship  
Design & Technology  
English  
Food & Nutrition  
Geography  
History  
IT  
LAMDA  
Mathematics  
MFL  
PSHE  
Physical Education  
RSE  
Science

## Years 9-11

Art, Craft & Design  
Business  
Citizenship  
Design & Technology  
English  
Food & Nutrition  
French  
Geography  
German  
History  
ICT  
LAMDA  
Latin  
Mathematics  
PSHE  
Physical Education  
RSE  
Science

## Years 12-13

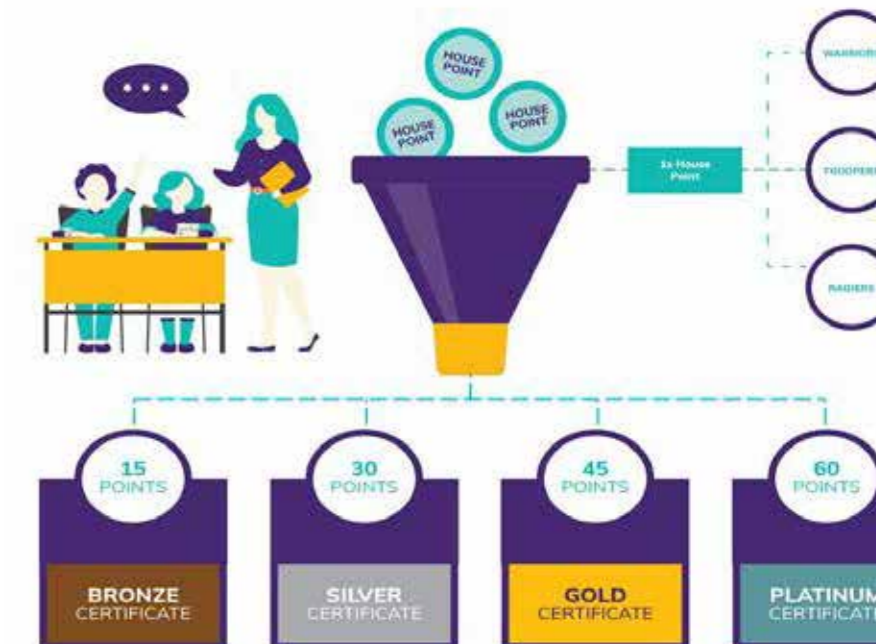
All of our students progress to the sixth form and are offered a broad range of curriculum options designed to meet the abilities and aspirations of all our learners.

# OneSchool Global Awards

## House Points:

A House Point is given when a student demonstrates notable qualities of the OSG Student Persona, either in their academic or personal achievements.

House Points recognise the individual student and they also add to the 'House' total for the House that the student belongs to. The winning house each year is awarded the House Cup, for the Campus, Regionally and Globally.



## Merit Certificates:

When a student receives a certain number of House Points during the year, they gain a Bronze, Silver, Gold and Platinum Merit Certificate.

# OSGAccelerate

**OSGAccelerate** has been mindfully designed to better align with the needs of today's students and businesses. Its key partner, FranklinCovey, is the world leader in helping build exceptional leaders, teams, and cultures that get results.

## What is OSGAccelerate?

The new OSGAccelerate course curriculum addresses feedback from global business owners which suggested an increased emphasis on student soft skills such as communications, cross-cultural awareness, phone etiquette, humility, and prioritisation. Work-readiness is not only about being able 'to close that sale' – it's about celebrating the sale with humility alongside the team.

While the fundamental understanding of business fundamentals continues to play an important role in preparing senior students for post-school success, business owners and future employers want to know that their new starters are above all honest and trustworthy and will be able to enter the workplace with:

- A desire to grow and to learn and to work respectfully with others.
- A positive attitude coupled with the ability to manage their time and tasks.
- The ability to set challenging goals and see them through.

In order to help develop these skills, the OSGAccelerate curriculum focuses on Franklin Covey's 7 Habits of Highly Effective Teens and other development tools that have been proven to help learners achieve results that require lasting changes in human behaviour. It also includes Microsoft-certified courses and education from other external subject-matter experts, to offer increased value and opportunity for students.

They will be supported to develop the skills they need to become highly effective students and adults who are leaders in their school and in their community.



Visit the website to find out more

<https://www.oneschoolglobal.com/osg-accelerate>

# OSGAccelerate

To reflect the importance of students' life-readiness, OSGAccelerate is considered part of OSG's official curriculum, and a formal department such as English, Mathematics, etc.

The course is a self-directed program that is undertaken during senior students' study periods, supported by teachers who have been trained in Franklin Covey's the 7 Habits of Highly Effective People. Teachers will review students' submissions and provide marks and grades allocated in accordance with the rest of the senior curriculum. Teachers are also available to provide Tutorials.

The first year of OSGAccelerate will see students complete half of the approximately 120 total hours of the course:

- 7 Habits of Highly Effective Teens
- Find Your Voice
- Take charge
- Inspire Others

20 hours of the certified Microsoft course for Excel.

Year 2 will include 40 hours of modules related to soft skills and business skills, plus 20 hours of the certified Microsoft courses.

The course is aligned with the Learning to Learn Framework with engaging Assignments and submissions, which include: practicing & recording soft skills, submissions of video recordings, quizzes, written tasks and opportunities for self-reflection and evaluation.

“ A true testament of the innovative teaching program resulting in mature, career ready, life ready school leavers. Thank you OneSchool Global! ”  
- Business Owner

# Policies and Documents



All of our Policies are available upon request from our school office or via our Campus Website:



<https://www.oneschoolglobal.com/campus/Ashbrook/>

- |  |                            |
|--|----------------------------|
| Grievance Policy   | RSE Policy                 |
| Supporting Students with Medical Conditions at School Policy | Learning Support Policy    |
| Supervision of Students Policy                               | Health & Safety Policy     |
| Student Discipline Policy                                    | First Aid Policy           |
| SEND Information Report                                      | Fire Safety Policy         |
| Serious Breaches Policy                                      | Equal Opportunities Policy |
| Safer Recruitment Policy                                     | EAL Policy                 |
| Safeguarding & Child Protection Policy                       | Curriculum Policy          |
| Risk Assessment Policy                                       | Complaints Policy          |
|  | Attendance & CMIE Policy   |
|  | Anti-Bullying Policy       |
|  | Admissions Policy          |

OneSchool Global UK is committed to the safeguarding and protection of its students in line with national guidance. We endeavour to provide a safe and welcoming environment where all children are safe, respected and valued, as well as being underpinned by the following two key principles:

- A child-centred approach; for services to be effective they should be based on a clear understanding of the needs and views of children.
- Everyone employed and who comes into contact with children at Campus has a responsibility in relation to safeguarding.

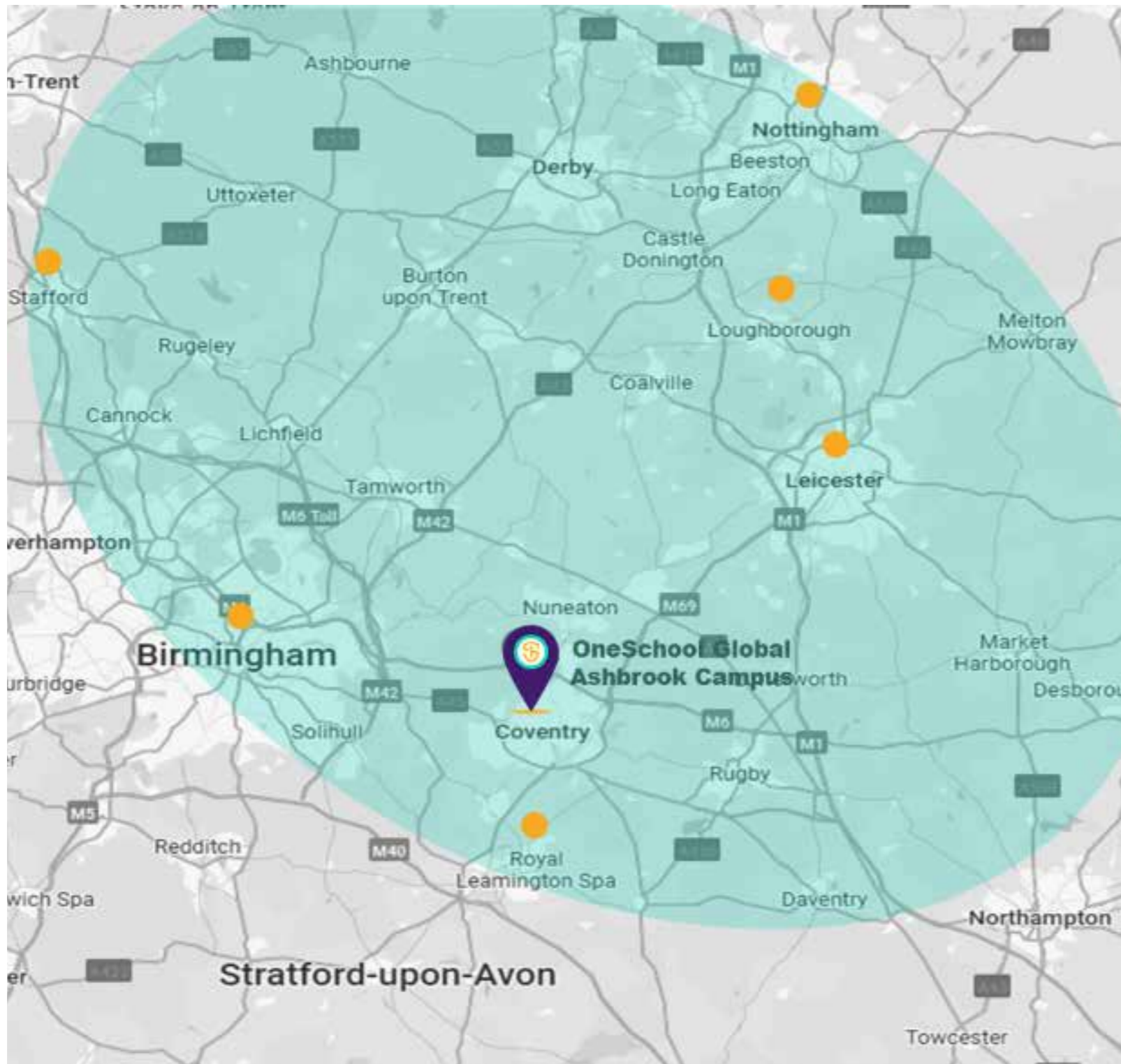
We listen to students and maintain a child-centred approach to Safeguarding and Child Protection. We provide a safe environment for students both under and over 18, especially those who are considered vulnerable.

# Teachers and Staffing

At OneSchool Global UK Ashbrook Campus teachers hold qualifications applicable to their post. In the absence of qualifications in some practical subjects previous experience will be considered if applicable. All staff, governors, trustees and volunteers have been subject to regulatory safer recruitment checks.

Name	Assigned Responsibilities	Qualifications
Mrs Samantha Atherton	Deputy Campus Principal Geography Teacher	BA (Hons), PGCE
Miss Ella Billson	Higher Level Teaching Assistant	BA (Hons)
Mrs Julie Burns	Regional Business Teacher	BEd (Hons) QTS
Mrs Sophie Coffey	Maths Teacher	BA (Hons), MA, QTS
Miss Jessica Cotterill	English Teacher Deputy Designated Safeguarding Lead	BA (Hons), PGCE
Miss Aimee Crouch	Primary Lead Teacher	BA (Hons)
Miss Chloe Fenton	Campus Administration Officer	-
Miss Sarah Fisher (Mat Leave)	Art & Design Teacher	BA (Hons), QTS
Miss Eleanor Glover	Campus Administration Officer	BA Hons
Mr Richard Hartley	Science Teacher	BSc (Hons), MSc, QTS
Mr Khorrum Khan	SENDCo	BA (Hons), QTS
Miss Faye Leake	Food & PE Teacher	BSc (Hons), PGCE
Mrs Elizabeth Miller	Primary Teacher	BA (Hons), PGCE
Miss Rachel Millington	Campus Administration Officer Exams Officer	BA (Hons), MA

Name	Assigned Responsibilities	Qualifications
Mrs Amber Mountain	Digital Media Teacher	BA (Hons), PGCE
Mrs Phillipa Macfarlane	Art and DT Teacher	BA (Hons), PGCE
Miss Katrina Papuga	Primary Teacher	B.Ed (Hons), QTS
Mrs Claire Parr	Primary Teacher, Designated Safeguarding Lead, Designated Mental Health Lead	BA (Hons), QTS
Mrs Jennifer Parry	Primary Teacher	BA (Hons), PGCE
Mrs Ashley Perrin	History Teacher	BA (Hons), QTS
Mr Harpinder Singh	Campus Principal	BA (Hons), QTS, MA
Mr Bill Taylor	Campus Premises Manager	-
Mr Andrew Turner	Law Teacher	BA (Hons), MA, PGCE
Mr Richard Tyler	History Teacher	BA (Hons), PGCE
Mr Ben Wise	Assistant Campus Principal, PE, and Citizenship Teacher	BSc (Hons), PGCE



# School Information

## OneSchool Global UK Ashbrook Campus

Prologis Park, Central Boulevard, Coventry, CV46 4BX

- Tel: 02476 308 180
- [ashbrook@uk.oneschoolglobal.com](mailto:ashbrook@uk.oneschoolglobal.com)
- [oneschoolglobal.com/ashbrook](https://oneschoolglobal.com/ashbrook)

Monday to Friday 08:45 - 14:55

Proprietor: **OneSchool Global UK**

Examination Centre No. 20494  
 Charity No: 1181301  
 DfE No: 937/6109

## Governance

### CA Team

Mr Mark Bass (Lead CA)  
 Mr John McCroft

### Campus Board Members

Mr Guy Douglass  
 Mr Marcus Clarke  
 Mr Laurie Burke  
 Mr Ronnie Mitchell

### Campus Principal

Mr Harpinder Singh

### OneSchool Global UK Representatives

Mr Bruce Dallow  
 Mrs Chloe O'Mara

### Holiday/Out of Hours Contact

Mr Mark Bass Tel: 07848 452698  
 email: [mark.bass@uk.oneschoolglobal.com](mailto:mark.bass@uk.oneschoolglobal.com)

### Correspondence for the Chair of the Trustees should be addressed to the Principal Office

Mr Bruce Dallow  
 OneSchool Global Ashbrook Campus  
 The Precinct Warwick  
 Poseidon Way  
 Warwick  
 CV34 6BY

For further information and the school calendar please visit our website: [oneschoolglobal.com/ashbrook](https://oneschoolglobal.com/ashbrook)  
 /Visit the OneSchool Global UK website: [www.oneschoolglobal.com](https://www.oneschoolglobal.com)

“

Please pass on our thanks for all the hard work....how lucky we are to have such an **amazing set of teachers** for our children!!

- Parent

Brilliant experience!! Really appreciated the insights into what happens on a daily basis at school. **Awe-inspiring to see the self-directed learning in action.**

- Stakeholder Event

Thank you for your kind and generous donations. We really do appreciate your ongoing support and for very kindly thinking of us once again. **Your donations will make a huge difference to us.**

- Charity Representative

”



“

Wow, what a great school and environment to learn and develop in. The great teachers with the best in mind for the children with **great new teaching methods.** Can we come back to school!!!  
Many thanks.

- Stakeholder  
Event

”



# OneSchool Global

*Learning to learn*

**OneSchool Global UK  
Ashbrook Campus**

Prologis Park  
Central Boulevard  
Coventry  
CV46 4BX  
Tel: 02476 308 180  
Email: [ashbrook@uk.oneschoolglobal.com](mailto:ashbrook@uk.oneschoolglobal.com)

**OneSchool Global UK**

The Precinct Warwick  
Poseidon Way  
Warwick  
CV34 6BY  
Tel: 0330 055 5600  
Email: [support@uk.oneschoolglobal.com](mailto:support@uk.oneschoolglobal.com)