



# ST BEES SCHOOL

WHERE WEST MEETS EAST





# Welcome

Founded in the year 1583 by Archbishop Edmund Grindal, St Bees School is very proud of its established history. We are a co-education independent school and welcome day and boarding students from the ages of 11 to 18.

At St Bees School, we are constantly striving to identify the needs of tomorrow's world and prepare our students to meet these challenges with confidence. We give them the skills to not only achieve, but to excel, in an ever-changing world.

Here at St Bees, we recognise that character is key and this means that our students develop academic attainment in tandem with character attributes. St Bees students will develop into confident, caring, creative, independent young people. They will harness a global mindset and they will walk away with competencies that set them up for future success.

The opportunities beyond what we consider to be the core of academic achievement and character development are myriad and students can thrive in the safest of environments. Sport, outdoor pursuits, music, art and drama all contribute to building towards each individual's confidence, independence, personal organisation, teamwork and leadership.

Small class sizes, one-to-one mentoring and all-round excellence in pastoral care and attention to mental wellbeing ensure that each young person at St Bees will develop a preparedness for the world beyond school.

The boarding community at St Bees is a melting pot of culture, with students from across the globe joining students from the UK in our comfortable, homely boarding house. This caring social atmosphere allows boarding students to develop their independence and sense of responsibility, as well as their social and interaction skills with people of different ages and cultures.

St Bees is a member of the Association for Character Education, and is accredited by the Independent Schools Council, the Boarding School's Association and The Good Schools Guide.

All in all, an exciting adventure awaits. Please visit us and find out for yourself what lies on the other side of our educational horizon.

Mr Robin Silk - Headmaster







“The school is set in 250 acres of picturesque private grounds, in the small, safe coastal village of St Bees, Cumbria. We are situated in a very unique location, on the edge of the stunning Lake District UNESCO World Heritage site, meaning that our students also have all that the great outdoors has to offer - right on their doorstep.”

Our partner schools:



ST BEES DONGGUAN  
圣比斯(东莞)  
WHERE WEST MEETS EAST



BRILLIANT LIGHT SCHOOL  
金铭钊学校  
WHERE WEST MEETS EAST



ST BEES ACADEMIC CENTRE · HUZHOU  
圣比斯学术中心 · 惠州

440

Years of history





# Curriculum

## Years 7 - 9

The curriculum for these year groups is based on the English National Curriculum for Key Stage 3. Subjects include Maths, English, Biology, Chemistry, Physics, Chinese, Art, Drama, Geography, History, PE, Global Awareness Programme, Personal Development and Computer Science.

## Pre-A Level

In order to fully prepare our international students for what lies ahead, St Bees School offer a unique chance to get to grips with the demands and expectations of A Level learning, with our one-year IGCSE course.

From EAL Support, university counselling and preparation, combined with a real focus on building their life skills, there are plenty of opportunities for our students to shine in their studies - and as individuals, too.

## Years 10 - 11 • IGCSE

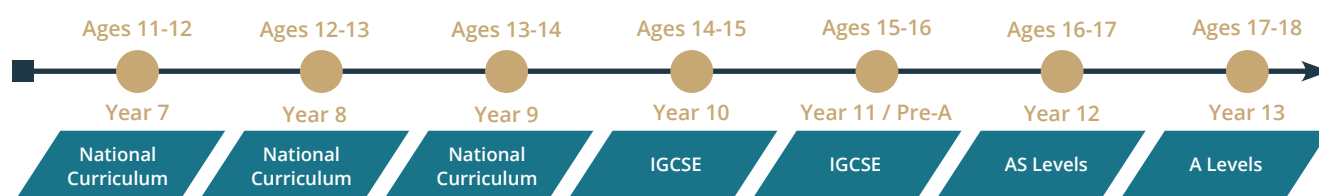
Students start their IGCSE courses officially in Year 10, at the age of 14. They work towards IGCSE exams in the following subjects:

- English Language
- English Literature
- Chinese
- Maths
- Biology
- Chemistry
- Physics
- Geography
- Art
- Computer Science
- Global Perspectives
- Drama
- Physical Education
- French and Spanish *coming soon*

## Years 12 - 13 • A Levels

At present, senior students at St Bees can study the following subjects at AS and A Level:

Art • Biology • Chemistry • Chinese • Economics  
English Literature • Further Maths • History  
Geography • Maths • Physics • Computer Science







## Fusion Maths



A unique Fusion Maths programme in partnership with the School of Education, University of Durham

St Bees School provides the opportunity to study Mathematics in a highly successful, innovative and pioneering way. With a Fusion Maths programme specifically tailor-made for St Bees, by the world-class School of Education at the University of Durham - students are embracing our Fusion culture and loving it! Fusion Maths combines the depth of the Eastern way of studying, alongside the very strong British methods and curriculum.

As a result, our students are performing, on average, two years ahead of their peers. Not only are they coping with the advanced work, they are excelling, achieving top grades and laying the foundations for a dynamic future.

## IPQ

At A Level, in addition to taking 3 full A Level subjects, students will also complete the Cambridge International Project Qualification - the IPQ. The IPQ is a project-based programme in which students further develop research skills, independent learning and analysis to produce an in-depth dissertation on a topic of their choice. Students who take the IPQ are required to engage with their topic to greater levels of depth, enhancing their ability to analyse, evaluate and consolidate - all key, transferable skills that are admired by future employers and universities.

Cambridge International summarises the award as, "this sort of deeper engagement will help develop students' ability to be life-long learners."

The IPQ has a designated time allocated to each week to allow Tutors to offer guidance and support in a structured way. We have a large computer room for research and offer bespoke help on particular topics from our staff with certain experience.

## EAL Support

All non-native English speakers are assessed on their English ability, with the option of receiving additional EAL lessons as part of their time at St Bees.

These lessons vary in terms of structure and content, but enable students to become more natural and confident within their English-speaking abilities. Additional EAL support forms part of the Pre-A Level course, but is also available for students in other year groups.

# 12

Average class size











# A Global Campus

## Free flow opportunities

Many other schools, especially Independent and Boarding schools, have sibling sites abroad. But at St Bees, our twin campus approach is revolutionary.

The first St Bees School China, in Shijiazhuang, opened in September 2020 with 200 students,

yet has a capacity of 1,500-2,000. In partnership with our thriving St Bees School in the UK, the two will co-exist as one entity and follow our unique fusion curriculum.

St Bees Donnguan followed suit and opened to students in September of 2020.







ST BEES DONGGUAN  
圣比斯(东莞)  
WHERE WEST MEETS EAST



BRILLIANT LIGHT SCHOOL  
金铭钊学校  
WHERE WEST MEETS EAST



ST BEES ACADEMIC CENTRE · HUIZHOU  
圣比斯学术中心·惠州

A third St Bees School in China also exists in Huizhou.

From here, a free flow of education will exist. As the three schools run their curricula in parallel, students will be given the opportunities and encouraged to spend half a term, a term or half a year at St Bees China, and vice versa.

They will seamlessly pick up the curriculum wherever they study. A true global exchange — and something that will prepare all St Bees students for that global world.












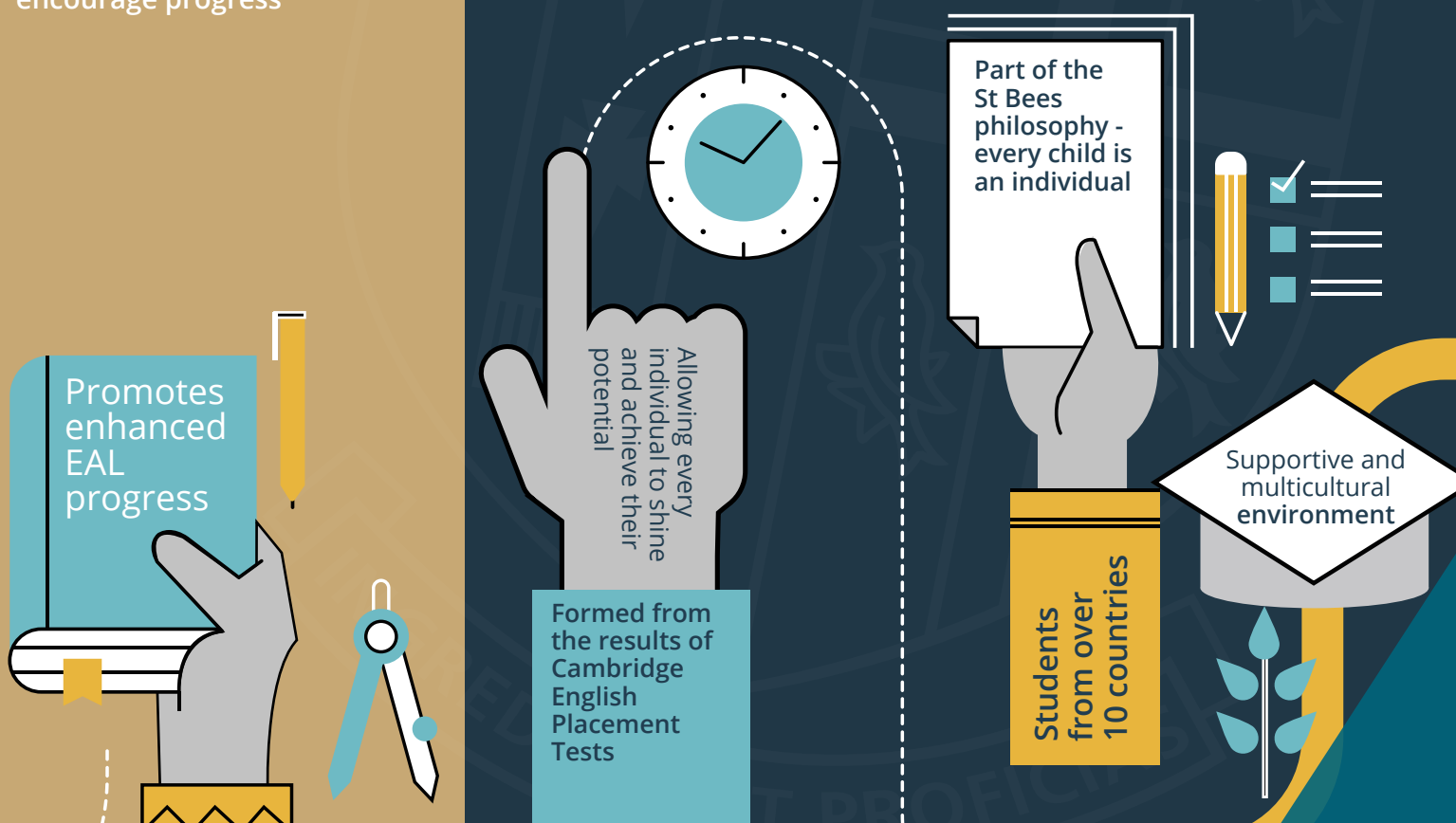


- Bespoke traffic-light system for EVERY student 
- Highlights strengths and weaknesses in language and presentation
- Suggestions for support and intervention
- Based on the Bell Foundation EAL Assessment Framework
- Regularly reviewed to encourage progress

# EAL Passports

## INDIVIDUAL ENGLISH SUPPORT FOR EVERY STUDENT

St Bees School's in-depth EAL passport system enables all non-native English speaking students to improve, achieve and succeed in a supportive, structured environment.





# Application Process

At St Bees, we've aimed to make the application process as easy and straight forward as possible.

We are not academically selective, but we do look for students with that extra 'spark'.  
For international students, English levels must be above B1 level (IELTS 5).



## STEP 1 Get in touch

Please get in touch directly with Director of Admissions, Ceara, by email or by phone.

[admissions@stbeesschool.co.uk](mailto:admissions@stbeesschool.co.uk)

+44 (0) 1946 828000



## STEP 2 Application form

Complete the Registration Form with all of your details and send it back to us with past school reports and results.



## STEP 3 Await our response

After reviewing your Registration Form, we may invite you for an interview and to complete a set of assessments in Maths and English.



## STEP 4 Interview

The interview will be an informal chat with the Headmaster and Head of Admissions, and will reveal if we can support you at St Bees School.



## STEP 5 Offer

Await your feedback - if we think that we can help you go above and beyond your potential, this is the stage in which we would offer you a place.



## STEP 6 Acceptance

Your place will be confirmed with an acceptance letter which would then require the receipt and the deposit.

All Registrations require a £100 Registration Fee.

“St Bees is a member of the Association for Character Education, and is accredited by the Independent Schools Council, the Boarding School's Association and The Good Schools Guide.”

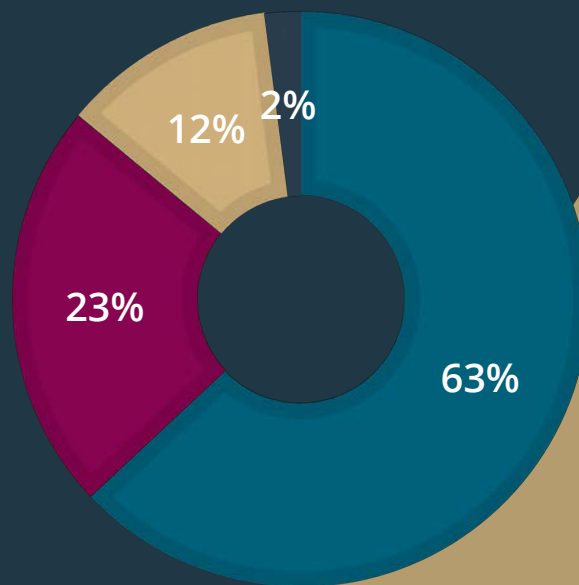
A seamless application process





# Student Population

■ UK ■ Europe ■ Asia ■ Rest of World



## 37%

### INTERNATIONAL STUDENTS

Including: Germany, Kazakhstan, Turkey, Spain, China, Hong Kong, Romania, Thailand, Nigeria, Ukraine, Sri Lanka, Australia, France

## “ Student testimonials

*My first term has been great, meeting new friends and settling into St Bees. The boarding house has been really fun - we've been on trips, including the cinema and canoeing.*

*I love Science Club after school - we do loads of fun activities and it's really exciting! England has lots of green space and near school, there is a shop, a beach and a train station.*

Ian, Hong Kong, Year 9 student

*I'm a day student at St Bees and it's amazing! I didn't realise school could be this fun. I love that we have a small class - it means making friends is really easy.*

Aarshiya, Cumbria, Year 7 student





# Results

St Bees School has a longstanding history of academic excellence, with many of our alumni in the past progressing to top University destinations, such as Oxford, Cambridge, Imperial, UCL, LSE, St Andrews, Warwick, Durham and Edinburgh.

Between 2010 - 2022, more than 80% of A Level results were A or B and St Bees is confident to uphold this strong tradition.

The school has in the past achieved 100% pass rates and 43% A\*-A.

These outstanding results placed the school as one of the highest achieving boarding schools in the North West.\*

\*Telegraph A Level Results Table 2013



## Outstanding Results • 2021 and 2022

2021 - 100% A\* - B for A Level and IGCSE 80% A\* - A at IGCSE

2022 - 79% A\* - C for A Level and IGCSE 88% A\* - C at IGCSE

Recent results include Year 13 student, Yuchang, who gained a clean sweep of straight A\* A Levels in Maths, Biology and art, and as such, secured a place to read Mathematics and Statistics at Russell Group University, Edinburgh. Similarly, Whitney, also Year 13, achieved A and A\* grades allowing her to read Biomedical Science at King's College London, University of London.











# Extra-curricular

The School's stunning location provides excellent opportunities for a varied outdoor pursuits programme including climbing, canoeing, sailing and mountain biking.

We have our own links golf course, with weekly golf lessons on offer, as well as an on-site heated swimming pool, which gives our students the opportunity to undertake a low-impact, fun sport during PE and outside of school hours.

For students who want to learn an instrument, we also provide music lessons for piano, singing, guitar and cello - amongst others.

St Bees Students also have the opportunity to undertake the Duke of Edinburgh Award during their time at St Bees - a fantastic opportunity to grow and develop. This world-renowned youth achievement award develops a wide variety of skills through activity-based learning. These could be anything from outdoor survival skills to beekeeping, to blogging and sport.

With three awards to work through, starting at Bronze, the Duke of Edinburgh Award works perfectly alongside our dedication to developing the character of all our students.







We have a wide variety of extra-curricular activities for students to get involved with and all students take part in these activities Mon - Thurs from 4:30pm - 5:30pm. The clubs include:

Art club • Eco club • Science club • Golf • Eton Fives • Swimming • Fitness  
Duke of Edinburgh • Business club • Music club • Dance club • Game Design





# Boarding

60+

Beds in School House



The boarding community at St Bees is a melting pot of cultures, with students from across the world joining students from the UK in our comfortable, homely boarding house.

St Bees School has had boarding students for hundreds of years. Boarding today is focused on pastoral care and providing a holistic education outside of normal school hours.

Being a boarder at St Bees means being part of a big family of students and staff. We study, dine and relax together; we look after and support each other, and we help each other develop as individuals and as a group.

Being away from home is an important educational experience. We believe that boarding encourages independence, unselfishness, responsibility, tolerance, respect for others and a spirit of camaraderie. Boarding also promotes self-reliance, resilience and resourcefulness. These attributes will stand boarders in good stead throughout their personal and professional lives.

There is one boarding house at St Bees School: School House. The boarding house comprises single, twin and triple rooms in single-sex corridors and has shared common rooms.





# Fees and Scholarships

## UK Students

### Years 7 - 8

	Per Term	Per Year
Day	£5,095	£15,285
Week	£7,048	£21,144
Full	£8,784	£26,352

### Years 9 - 13

	Per Term	Per Year
	£5,855	£17,565
	£8,458	£25,374
	£10,628	£31,884

## International Students

### Years 7 - 8

	Per Term	Per Year
Full	£11,605	£34,815

### Years 9 - 13

	Per Term	Per Year
	£12,800	£38,400

## Extras

- Airport transfers - approx £250/trip for 1 student, £120/student for shared
- Guardian and homestay
- Visa
- Uniform

## Scholarships

We are delighted to offer a new array of scholarships for September entry. There are five different types of scholarship available:

- Academic
- Creative Arts
- Sports
- Engineering
- The Full Circle Scholarship

See [www.stbeesschool.co.uk/scholarships](http://www.stbeesschool.co.uk/scholarships) for more info

## Term dates 2023 - 2024

### Autumn Term 2023

**Wednesday 6 September - Friday 13 October**  
*Half Term - Monday 16 October - Friday 27 October*  
**Monday 30 October - Friday 8 December**  
*Christmas - Monday 11 December - Tuesday 2 January*

### Spring Term 2024

**Wednesday 3 January - Friday 9 February**  
*Half Term - Monday 12 February - Friday 16 February*  
**Monday 19 February - Thursday 28 March**  
*Easter - Friday 29 March - Monday 15 April*

### Summer Term 2024

**Tuesday 16 April - Friday 24 May**  
*Half Term - Monday 27 May - Friday 31 May*  
**Monday 3 June - Friday 5 July**  
*Summer - Monday 8 July*





# Location

St Bees School is located in one of the most beautiful regions of the UK - Cumbria - a county in the North West of England. World famous for its stunning lakes, but also close to the sea and mountains, it is the perfect location for those seeking adventure, but also tranquility. The cities of Manchester, Glasgow and Newcastle are easily reached for day trips.

We are situated in a very unique location on the edge of the stunning Lake District UNESCO World Heritage site.







# Travel to St Bees

## Day students

For local students, we do have our very own minibus service, which can be arranged to pick up students from their homes, or nearby pick up points. The route is determined each year, dependent on student requests - so let us know as soon as you're interested!

## International students

St Bees is fortunate enough to be served by many Northern airports, all within a 2-3 hour drive of St Bees. The nearest is Manchester Airport, for which we are able to offer a pick-up service from. Other options include Liverpool Airport, Newcastle Airport and Glasgow Airport.



- |                                |                              |                 |
|--------------------------------|------------------------------|-----------------|
| 1 Main Entrance and Foundation | 4 Science Block              | 7 Sports Centre |
| 2 Swimming Pool and Eton Fives | 5 Business Management Centre | 8 Priory        |
| 3 Sports Pitches               | 6 School House               | 9 Train Station |



St Bees train station is a mere two-minute walk away from the school, with regular trains to all airports, and a five hour journey from all London stations. Day students also use the train service to arrive at school and arrange to have supper with us before they catch their train home.





St Bees School,  
Wood Lane,  
St Bees,  
Cumbria  
CA27 0DS

E: [admissions@stbeesschool.co.uk](mailto:admissions@stbeesschool.co.uk)  
T: +44 (0) 1946 828000

[www.stbeesschool.co.uk](http://www.stbeesschool.co.uk)



**ST BEES SCHOOL**  
WHERE WEST MEETS EAST