



***Developing Tomorrow's Leaders Today***



# CONTENTS

Page

**3. About us**

**4. What makes The Misbourne unique**

**5. Benefits**

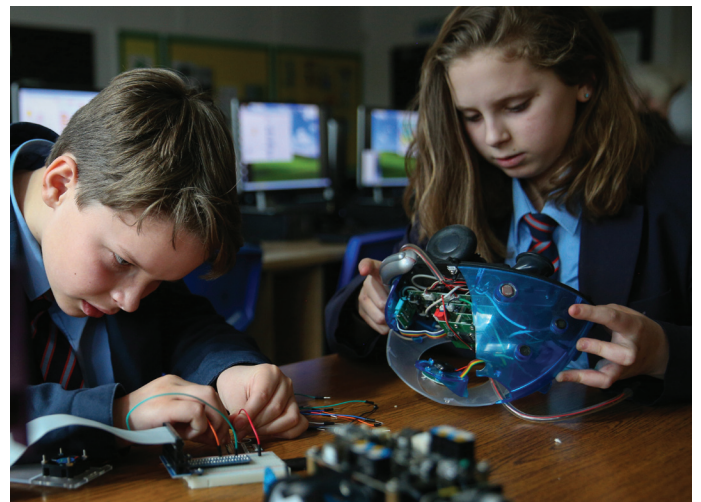
**6. What our staff say**

**7. Where is The Misbourne**

**8. Life is good in Bucks**

**9. Top local attractions**

**10. Find out more**





# ABOUT US

The Misbourne officially opened on 20 January 1956 and was the first modern built secondary school in the UK. Over the years the school has expanded and developed to include many more facilities and buildings for our students and staff, retaining its modern, open feel.

In January 2018, The Misbourne converted to an academy. Today, we are a multi-cultural, co-educational school with 1021 students currently on roll. One hundred and eighty students in each year group 7 - 11 and 130 in a growing Sixth Form. The Misbourne has more than 100 teaching and support staff who work as a team to achieve our mutual goals.

## The Misbourne Campus

The Misbourne enjoys a spacious and attractive campus which provides purpose built, subject specific areas, tennis courts and extensive playing fields. The academy is fortunate to have a new building for the Sixth Form, English department and academy café; three new IT suites and plans for a brand new sports hall in the coming months. The school also provides staff parking.







## What makes The Misbourne unique?

We believe that any barrier to learning can be overcome. The academy has a highly motivated and professional atmosphere where everyone strives for educational excellence in every lesson, every day. We have high expectations, which are actively promoted in all aspects of life at The Misbourne. The academy's learning environment allows all students to flourish through mutual respect, kindness and a strong desire to achieve.

## Ethos, Culture and Values

The Misbourne is recognised for setting high standards through its innovated and collaborative approach. It is a friendly, family, learning community with the fundamental purpose of providing a world class education for all its students. In order to accomplish this, Misbourne staff share the following ethos and values:

- We have a culture of sharing best practice and finding ways to say yes to what works best for our staff, students and the whole community.
- We believe that students learn best when all are valued, inspired, curious and happy.
- We believe that all our students can become confident, resilient and courageous.
- We encourage students to discover their own passions and achieve their bests.
- We believe that the learning habits developed by students are just as important as the knowledge and understanding they acquire during their time at The Misbourne.

The Misbourne is a school where every student matters. Where our professional and passionate staff work hard to instil the belief in students that they can achieve more than they ever thought possible.

Through inspiring teaching; excellent pastoral care and strong partnerships with families and the wider community, our students leave us with the qualifications, skills and values needed to lead happy and successful lives.





## What our staff say:

*I have loved my time here and continue to do so. From the first day, all the staff have been so supportive, understanding and very friendly. It makes for a lovely atmosphere. My job is crazy-busy but I enjoy every minute of it.*

**Samina Jahbeen, Reprographics**

*The Misbourne has supported me through many stages of my career, when I started I was unqualified and unsure if teaching was the profession for me, now four years on I am fully qualified and have completed my NQT year. The staff and students make The Misbourne an exciting and enjoyable place to improve skills and develop as a teacher. Support and guidance is always available and colleagues are kind and encouraging. I feel very lucky to have been given the opportunities I have had at The Misbourne.*

**Alicia Balchin, English Teacher**

*From my Induction Day to my first day and still today I feel welcomed, supported and most definitely valued. This is a great academy to work at with fantastic students and staff. I am proud to be a teacher at the Misbourne.*

**Caroline Weller, English Teacher**

*Working at The Misbourne is all about working as a team, with each member supporting each other to ensure we are doing the 'why' of our jobs - to encourage and develop our students into independent and confident young people ready for their next steps. Exemplary staff training and mentoring offered at The Misbourne allows every curriculum area the opportunity to ensure that all students obtain excellent teaching; this is mirrored as solid progress throughout the academy. Building strong relationships between families, students and teachers is pivotal in the continued success of the academy and is a key factor in its success and popularity.*

**Kerry Cato, Curriculum Leader Technology**





# BENEFITS:

## Health and Wellbeing

- Occupational sick pay.
- Maternity, paternity and adoption leave.
- Staff Buddies – all new recruits are allocated a staff buddy by our welfare team.
- A free, independent and confidential 24-hour Employee Assistance Programme, which provides advice and support, including a counselling service.
- Occupational health work station assessments.
- On-site staff sports including football and yoga.
- Contribution towards eye tests and glasses where a display screen risk assessment and eye test show glasses are needed for work.
- Employee Representatives and regular Staff Wellbeing Surveys.
- Stress management and resilience building courses.
- A free lunch is provided for staff working on INSET training days and food is provided for staff taking part in consultation evenings, The Misbourne Open Evening and other after-hours events.
- Site team uniform.

## Training

The Misbourne provides:

- An excellent induction programme.
- A supportive community with mentors to guide you and help develop and progress your career.
- An exceptional, on-going programme of varied training opportunities and additional support.
- A bespoke continuing Professional Development (CPD) programme linked to the academy's action plan, or individual employee's development needs identified in performance reviews, which meet the needs of the school.
- Workshops and training – from Safeguarding and DBS processes, to How to Control Emotional and Challenging Conversations.

## Opportunities

- Many opportunities for progression in the school and through two school alliances that work with The Misbourne.

## Financial

- Teaching staff awards for service to the academy: We will offer a £100 bonus payment after working for 10 consecutive years (pre and post academy) at The Misbourne. We will offer a gift to the value of £300 after working for a total of 25 years within BCC schools with at least 15 years being continuous service (pre and post Academy) at The Misbourne.
- Support staff award for service to the academy:- 10 years' service is £100, 15 years' service is £150, 25 years' service is a gift to the value of £300.
- Teaching Staff Pension: 16.48% employers' contribution to pension Death in Service Grant: In the event of a teacher dying whilst in service their nominated beneficiary would receive 3x their annual salary as a one off lump sum.
- Support Staff Pension: 22.8% employers' contribution to pension lump sum payments options. Support staff are currently able to take up to 25% of their 'pension pot' as a tax-free lump sum at retirement. Lump Sum Death Grant - If a member of support staff was to die whilst in active employment, a death grant of three times their pensionable pay will be paid out as a lump sum to their nominated beneficiary/beneficiaries.
- Free independent financial advice from Employee Assistance Programme – a confidential service to provide advice and support to all staff and their families.
- Childcare voucher 'Salary Sacrifice' scheme. A Government approved, tax-efficient way of paying for registered childcare (including holiday clubs) for children up to the age of 16.
- Eligibility to apply for key worker housing (applies to teaching staff). <https://www.helptobuw.gov.uk/>
- Costco Membership – any public sector worker is entitled to Costco membership on production of a payslip.
- Membership of edenred.com offering discounts at a wide range of retailers.



# WHERE IS THE MISBOURNE?

Our academy is situated in the picturesque village of Great Missenden in the heart of The Chilterns Area of Outstanding Natural Beauty, just 27 miles from Oxford and 37 miles from Central London.

Great Missenden closely adjoins the villages of Little Kingshill, Little Missenden and the larger village Prestwood. The towns of Amersham, Chesham, High Wycombe and Aylesbury are nearby. Great Missenden's narrow and historic High Street is bypassed by the main A413 London to Aylesbury Road. The village is best known as home to the late Roald Dahl, the world-famous author. The Roald Dahl Museum and Story Centre as well as the Roald Dahl Foundation are located in the High Street.

## Transport Links

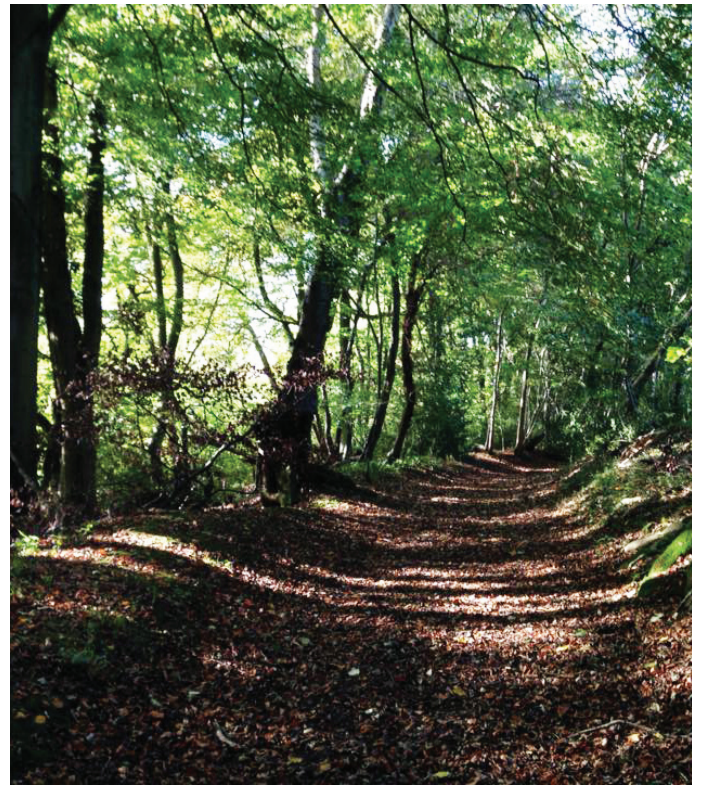
The Misbourne offers free on-site parking to all staff.

Great Missenden is really well connected to London and the Midlands:

**By road...** Lying just outside the M25, access to London, the Midlands and airports is very easy via the M40, M4 and M25.

**By train...** Great Missenden mainline railway station, which is a 10 minute walk from The Misbourne, provides direct trains to Central London in just over 40 minutes and to Aylesbury in around half an hour. You can hop onto The London Underground Metropolitan line at nearby Amersham or Chesham.

**Nearest airports...** Great Missenden is close to both Luton (27 miles) and Heathrow (24 miles) airport, convenient for family holidays or weekend European city breaks.





# LIFE IS GOOD IN BUCKINGHAMSHIRE

Stretching from the outskirts of London in the south to the Midlands in the north, Buckinghamshire offers the best of both worlds – rolling hills on your doorstep with London, Birmingham and Oxford, just a short ride away. An area of outstanding natural beauty, it has been ranked as one of the top rural areas to live in the UK.

From the buzz of Aylesbury, High Wycombe and Milton Keynes, to the smaller market towns including, Amersham and Chesham, and characterful villages such as Great Missenden, Waddesdon and Brill, there are locations to suit a range of lifestyles and budgets.

Buckinghamshire has the most National Trust properties in England, is the birthplace of the Paralympic movement and is home to Pinewood Studios – the studios behind blockbusters including James Bond, Star Wars and Harry Potter.

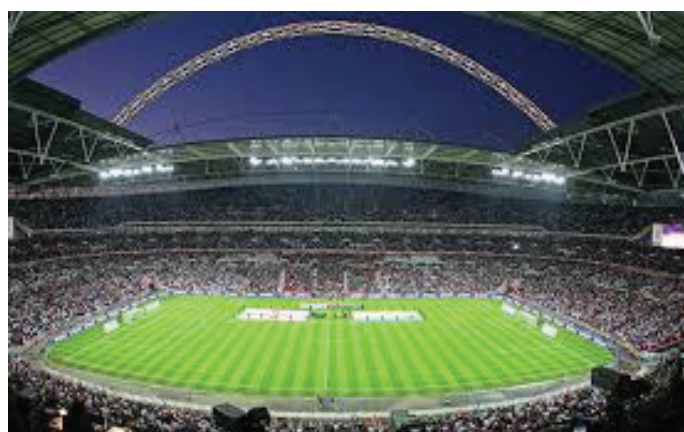




# TOP LOCAL ATTRACTIONS

From the Harry Potter Studio Tour to Bicester Village, there are lots of great attractions nearby.

- Roald Dahl Museum and Story Centre
- Roald Dahl Village and countryside trails which explore the local area and point out key sights that relate to Roald Dahl's books and life.
- Chiltern Open Air Museum
- Bletchley Park and The National Museum of Computing
- Silverstone Grand Prix Circuit
- Warner Bros Harry Potter Studio Tour
- Pinewood and Elstree film studios
- Tom Kerridge's 2 Michelin star pub, The Hand and Flowers
- Shopping at Bicester Retail Village, the centre:mk and Eden Shopping Centre
- Waterside Theatre in Aylesbury, Chesham Elgiva Theatre and the Wycombe Swan
- The Empire and Cineworld cinemas in High Wycombe, The Odeon Cinema in Aylesbury and the fabulous Rex Cinema in Berkhamsted.
- The city of Oxford with its historic buildings and world-renowned university.
- Henley and Marlow – known for their summer regattas.
- Wembley Stadium and MK Dons Stadium
- Windsor and Windsor Castle
- Fifteen National Trust estates, parks and monuments, including Hughenden Manor, West Wycombe Park and the Hellfire Caves, Waddeson Manor, Cliveden and Stowe
- Chenies Manor House
- Hartwell House Gardens
- Bekonscot Model Village, Beaconsfield
- Stunning countryside for walking, biking, horse riding
- Zoos and safari parks
- Garsington Opera
- PennFest



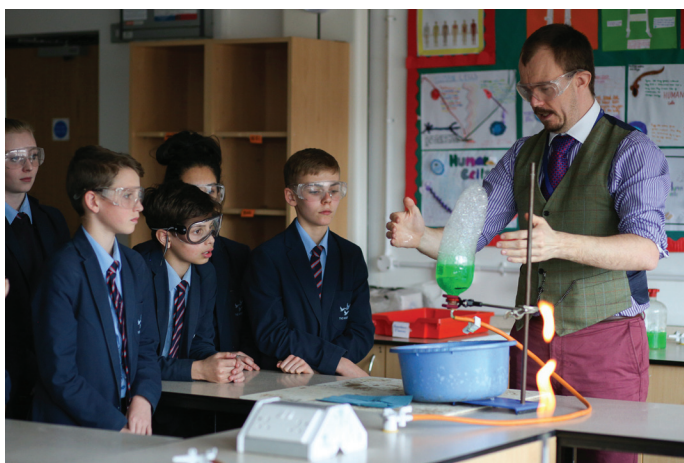


# FIND OUT MORE

This is such an exciting time for the academy and we are always looking for talented individuals who want to make a difference. If you think that a career at The Misbourne is right for you, visit the recruitment pages on our website .

If you cannot find the information you are looking for on the website, or you wish to see the academy in action, then please do not hesitate to make arrangements via the academy office: [admin@themisbourne.co.uk](mailto:admin@themisbourne.co.uk). Our staff and students are exceptionally proud of their academy and we would love to show you around.

**Jo Meloni**  
Headteacher





## THE MISBOURNE IN NUMBERS

<b>Over 90%</b>	of staff are proud of what we are achieving as a school
<b>94%</b>	of students make expected progress
<b>100%</b>	of students go on to education, employment or training
<b>50%</b>	of Sixth Form Students take up university places (including 7% Russell Group Universities)
<b>50%</b>	of Sixth Form students take up a degree level apprenticeship, apprenticeship or employment
<b>86%</b>	of students make above expected progress
<b>68%</b>	of Year 11 achieve a Grade 4 or above in GCSE English and Mathematics





**The Misbourne  
Misbourne Drive  
Great Missenden  
Buckinghamshire  
HP16 0BN  
Tel: 01494 862869  
email: [admin@themisbourne.co.uk](mailto:admin@themisbourne.co.uk)  
[www.themisbourne.co.uk](http://www.themisbourne.co.uk)**