

FULLHURST

COMMUNITY COLLEGE
EST. 1991

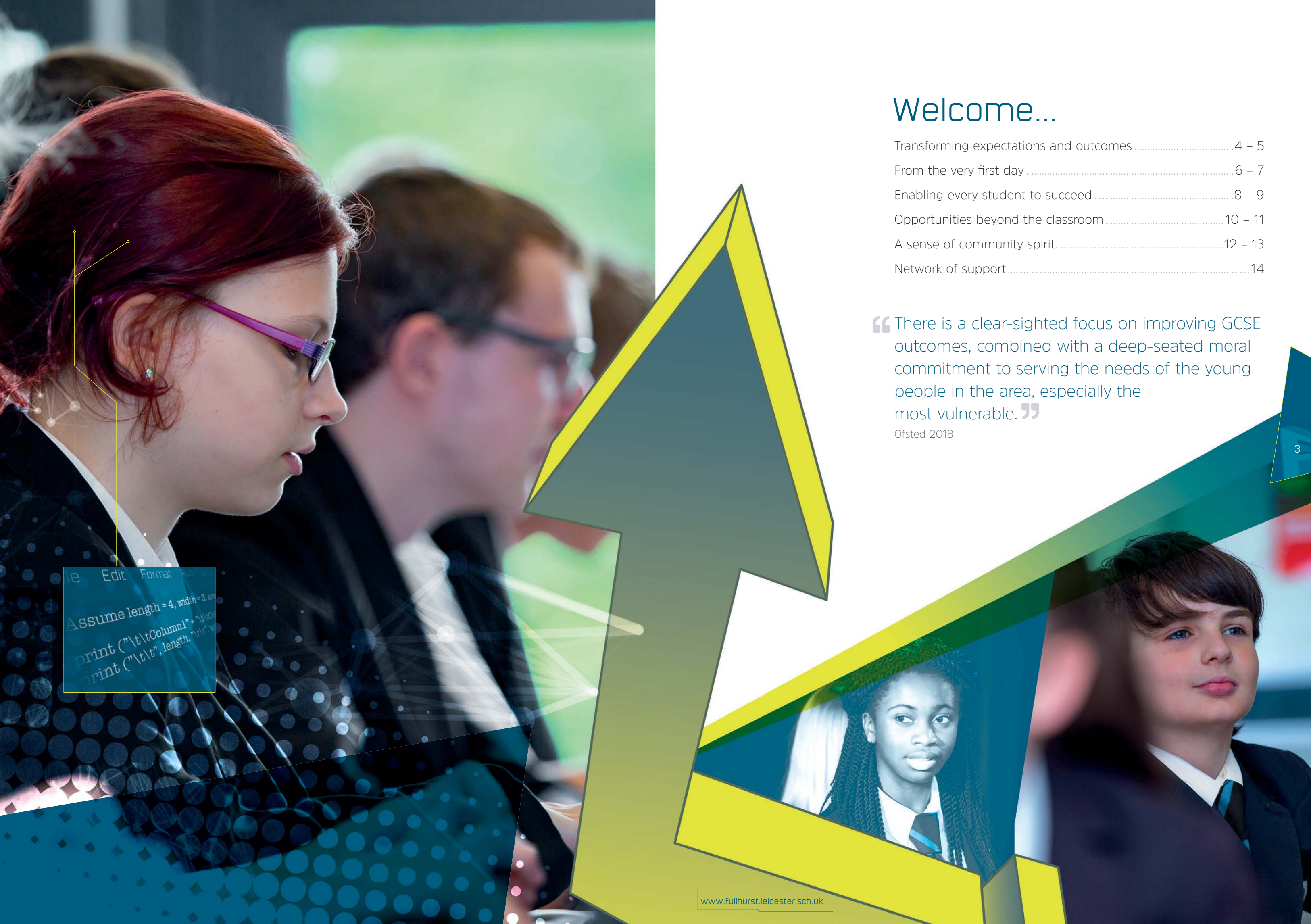
 @fullhurst



Transforming Lives



www.fullhurst.leicester.sch.uk



Welcome...

Transforming expectations and outcomes	4 – 5
From the very first day	6 – 7
Enabling every student to succeed	8 – 9
Opportunities beyond the classroom	10 – 11
A sense of community spirit.....	12 – 13
Network of support.....	14

“ There is a clear-sighted focus on improving GCSE outcomes, combined with a deep-seated moral commitment to serving the needs of the young people in the area, especially the most vulnerable. ”

Ofsted 2018

```
File Edit Format Run  
Assume length = 4, width = 3, and  
print("\t\tColumn1" + "\t\t")  
print("\t\t", length, "\t\t")
```


Transforming expectations and outcomes...

Fullhurst Community College's priority is to provide the highest quality education for every student in a supportive and inspiring environment.

'I can do...'

It is our aim that students leave the college as successful, confident and responsible young people equipped with academic qualifications as well as the personal and social skills to enable them to succeed and make a positive contribution to society.

We believe that resilience is key to our young people exceeding their potential and passionately instil an 'I can do...' outlook on life.

We take great pride in seeing our students flourish and develop into confident young adults.

We hope that this prospectus and our website will give you a brief flavour of what we are about. We would also encourage you to take the opportunity to visit the college and find out more.

Mr S Piggot - Principal

"Fullhurst Community College has a caring and high quality learning environment with first class leadership and staff, where the objective is to improve the lives of all our young people."

Mr R Moore - Chair of Governors

"I was astounded when I opened my results. I cannot thank my teachers enough for all of the extra time and support they offered."

Vazgen, who achieved level 9 in English Literature and Maths, as well as 2 A* and 4 A grades in 2017



Award Winning

Fullhurst is one of the top 200 schools in the country. We are also very proud to be the Department for Education 2017 Pupil Premium Secondary Regional Champion and 2017 Leicester Mercury School of the Year.

A levels
BTEC
Apprenticeship

From the very first day...

We work very closely with our family of local primary schools to ensure that you and your child are happy and confident about their transfer to Fullhurst.

We ensure that we get to know each child and understand their social and academic needs and abilities. Many children are familiar with the college and members of our team, having attended events such as our annual Modern Foreign Languages day, weekly more-able Maths sessions or sports festivals during the summer term. Members of Fullhurst staff frequently visit local primary schools to deliver taster sessions and workshops.

As a reflection of both the success and popularity of the college, we are currently in the process of expanding from 1035 to 1500 students. To facilitate this, a new build is being developed in conjunction with Leicester City Council on Ellesmere Road, the site of the old Ellesmere College. This site will operate as a Key Stage 3 (year 7 and year 8) hub and will open in September 2019.

There are a number of opportunities for you and your child to meet staff before their first day. During the summer term, a member of the year

7 team will visit your child's primary school along with a group of current year 7 students.

There is an opportunity for you and your child to meet individually with a member of the leadership team as well as an induction evening for parents to receive more in-depth information about the transition process. Just before the summer break, all pupils are invited to attend a full induction day, allowing them to experience what lessons are like in all of our different faculties and find out more about life at Fullhurst.

"The transition from primary school into secondary school can be an incredibly daunting time for children and their parents, but we make every effort to ensure that the change is as seamless as possible."

Head of Year 7

"I was really nervous because it was much bigger than my old school but it only took me a few days to find my way around and I have made lots of new friends."

Year 7 student

A prime number is a number that has exactly two factors, 1 and itself. The first few prime numbers are 2, 3, 5, 7, 11, 13, 17, 19, 23, and 29.

As a trust school, we operate the Leicester City Authority admissions procedures, administered by the the Schools Admissions Service of Leicester City Council. Further information can be found on their website: www.leicester.gov.uk

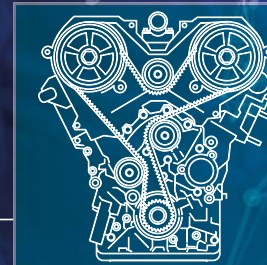
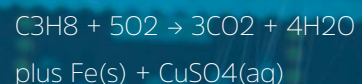
Enabling every student to succeed...

At Fullhurst Community College we offer a broad and balanced curriculum designed to ensure that every student has the opportunity to fulfil their potential.

Students follow personalised pathways for learning which meet their individual needs. All students learn more about the world around them in Citizenship and RE lessons and through our tutor programme. Careers education, information, advice and guidance is offered to students in each year at Fullhurst Community College including trips and workshops, work experience and mock interviews.

In Key Stage 3, lessons have a clear focus on developing learners who have the knowledge, skills and enquiring minds that will enable them to achieve at Key Stage 4; there is an emphasis on literacy and numeracy. In both year 8 and 9, students are given the opportunity to make option choices about the subjects they study, allowing for a more personalised curriculum and for many GCSE courses to begin in year 9. The Key Stage 4 curriculum gives students the opportunity to specialise in subjects for which they have a passion.

Alongside the core subjects, students select from a wide range of options including more traditional GCSE subjects such as History and French, through to vocational subjects including Food Preparation and Nutrition, Hair and Beauty and Service and Maintenance Engineering. Further and additional course options are available in Maths and Science allowing our most able students to gain an additional qualification.



Re-align the fan belt and complete an oil change

Top 10%

For the past three years, Fullhurst Community College has been in the top 10% of schools nationally for progress made by students.

Our outstanding team of teachers and support staff know that some of our students have individual learning needs which may affect their progress across the curriculum. We have a committed team trained to support students with a variety of needs in our fully staffed and well-equipped SEND department, able to facilitate classroom support, small group work and individual one-to-one support. The college's Special Education Needs and Disability (SEND) policy can be viewed on our website.

Students showing aptitude in specific areas will join our more able groups which run in all curriculum areas. Their progress is then monitored and tracked to ensure that they are continuing to maximise their potential.

At Fullhurst we strive to ensure that work is closely matched to students' abilities and rigorous enough to provide the challenge necessary for students to achieve their very best.

The positive benefits of the Pupil Premium can be seen throughout the college and particularly in the increasing percentage of students making better than average progress. We were extremely proud to be announced as secondary regional champion at the Pupil Premium Awards 2017 recognising the college's success in raising aspirations and ensuring disadvantaged students can fulfil their full potential.

From rock choir to trampolining, micro-bit club to Fullhurst mad scientists, there are a huge range of activities on offer at Fullhurst to extend learning beyond the classroom, provide enjoyment and develop practical life skills.

Opportunities beyond the classroom...

Enrichment activities take place during lunchtimes and after college every day of the week offering something for every student to get involved in. Each year the Drama department stages a spectacular production, supported by an audience of family, friends and staff.

The Fullhurst Pledge is our commitment in Key Stage 3 to offer a wide range of additional learning and social activities designed to engage and challenge. We encourage all students to take full advantage of all opportunities offered to them, to broaden their horizons, try something different, something out of their

comfort zone and improve their self-confidence. Regular educational visits are an integral part of learning across the whole curriculum, including visits to conferences, theatres, museums, galleries and sporting events such as the Curve Theatre, Bletchley Park, the National Justice Museum, St George's Park and the Design Museum.



“After a close final game, we are the Year 7 Schools County Basketball Champions! Amazing!”
Year 7 student

“No opportunities to positively influence learning are missed.”

Challenge Partners review

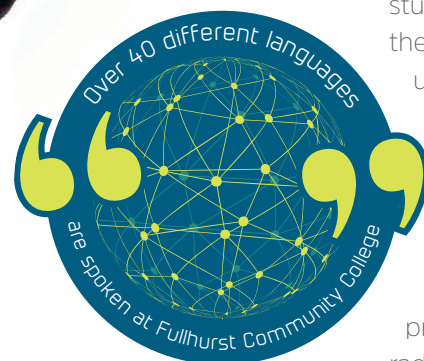
We currently run two international residential; a French cultural visit to Paris and a skiing excursion to Austria.
“A great experience and a once in a lifetime opportunity.”
Year 10 student.

A sense of community spirit...

By developing their sense of community, cultural awareness, respect and tolerance, we help Fullhurst students to take their place in society. Our uniform is designed to be inclusive and practical; it helps build a sense identity and pride in our community.



'Student Voice' representatives meet weekly throughout the college year to speak on behalf of their peers about their ideas on how we can improve the college. 'Student Voice' is important because it provides the student body with a forum where their needs are listened to and understood, and where they are actively encouraged to take on responsibility and leadership.



Fullhurst Community College is the first college / school in the UK to have a fully set up, professional, online community radio station which is run by students. Fullpower broadcasts around the clock online with music and live presentations aimed at young people and residents within the local community. Listeners regularly tune in from as far afield as Brazil, Egypt and the USA!

"Students at Fullhurst have a great environment in which to learn. The facilities are superb and there is a pleasant atmosphere of warmth and respect." Visitor.

Fullhurst Community College is a Stonewall Champion, promoting a safe and inclusive learning environment that empowers students and staff alike to celebrate differences and challenge prejudice.

Working in partnership with Enstruct Training, we've developed an allotment as well as wildlife gardens and ponds enabling cross curricular use throughout the college as well as opportunities for use by local residents during evenings and at weekends and school holidays. The food harvested on site is donated to a local foodbank, further strengthening community links.

This year, we have launched The Duke of Edinburgh's Award for year 9 and 10 students. The award, which is all about going the extra mile – gaining new skills, pushing yourself physically, helping others and exploring new activities, is highly recognised by colleges, universities and employers.

"Thank you so much, this has really helped me and my family over Christmas, I feel so blessed that you thought of me."

A heartwarming messages of thanks, from a local recipient of one of our Christmas hampers.



Network of support...

We provide a supportive environment in which all students are valued and positive relationships with teachers contribute strongly to students' success.

The happiness and welfare of every student is of the utmost importance to us. We have an excellent pastoral care system providing support and care for our students both academically and emotionally. A dedicated Head of Year, who is a non-teaching staff member, is the main point of contact for both students and parents / carers.

We strive to ensure that every student is guided into making positive choices in terms of behaviour, health, relationships with others and aspirations for the future.

At Fullhurst Community College we recognise the importance of making and maintaining strong home-school links; we endeavor

to develop a close relationship with parents and carers in order to support all students to succeed.

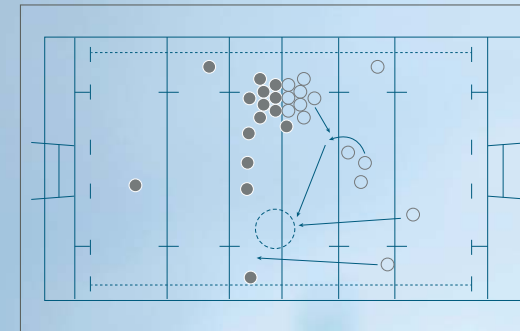
This partnership does not develop through reporting cycles and parents' evening events alone; we seek to involve parents and carers on as many levels as possible including taking steps to ensure that the college is a welcoming, communicative and friendly place for parents and providing clear and accessible guidance to help parents support their child's learning and development.

"I have always found the staff at the college very welcoming and helpful."

Parent

"Safeguarding is a strength of the school. Pupils feel safe and are confident about whom to go to if they have a concern."

Ofsted 2018

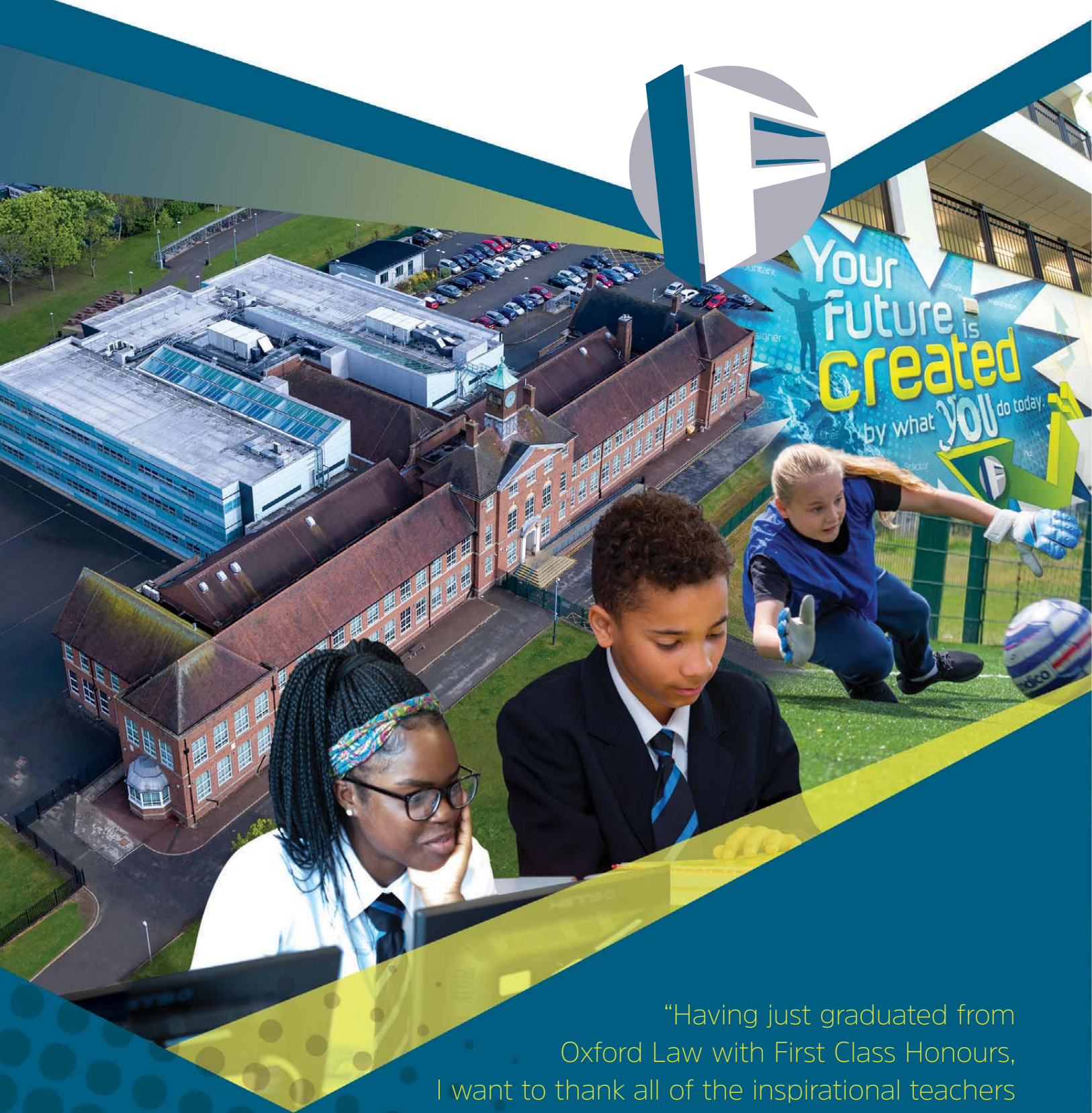


We hope that you have enjoyed reading our prospectus and that it has given you a flavour of the college.

However, it is no substitute for a visit and we warmly invite you to come and find out more. We're looking forward to meeting you.

The General Data Protection Regulation (GDPR), in force from 25 May 2018, sets out principles for how to process people's personal data and keep it safe. Our privacy notice and further information can be found on the Fullhurst Community College website.

www.fullhurst.leicester.sch.uk



“Having just graduated from
Oxford Law with First Class Honours,
I want to thank all of the inspirational teachers
at Fullhurst for their support and for encouraging
me to believe that anything is possible”.

Former Fullhurst student

Fullhurst Community College
Imperial Avenue
Leicester. LE3 1AH
T: 0116 282 4326
F: 0116 282 5781
E: office@fullhurst.leicester.sch.uk

Visit us at www.fullhurst.leicester.sch.uk
Follow us on [🐦 @fullhurst](https://www.instagram.com/fullhurst)

Please contact us for more information, to ask any questions, or to arrange a tour.