

Independent Day School for girls 4 - 16 years  
Day Nursery & Pre-School for girls & boys from 6 months

**Abbot's Hill** 



**Teacher of Maths**

Required for September 2024 (Full time or 0.8)

## Our Heritage

We trace our roots back to 1912 when Abbot's Hill was founded on the present site by Alice, Katrine and Mary Baird, advocates of education for girls. The Baird sisters ran a school in the Malverns and in May 1912 they opened Abbot's Hill as an independent boarding school for 'young women of character'.

The School's Main Building was originally built in 1836 by the paper manufacturer, John Dickinson, as a home for him and his family and he named it Abbot's Hill. The Dickinson family founded one of the world's largest stationery firms of the 19th and 20th centuries.

On John Dickinson's death in 1869, Abbot's Hill passed to his only surviving son John and then in 1908 to Sir Arthur Evans. Arthur Evans, the Archaeologist and discoverer of Knossos, was John Dickinson's great-grandson and had spent part of his childhood at Abbot's Hill. He did not however return to live there but arranged for it to be sold to the Baird sisters.

Over the years, the school has developed and grown in a variety of ways, but the key milestones in its history were in 1969, when St Nicholas House School moved to the Abbot's Hill site to form the Junior Department and in 2003, when boarding ceased. However, Abbot's Hill retains its boarding feel, which is to be seen in the emphasis given to co-curricular pursuits, the intrinsic importance of pastoral care and the school's strong sense of community.

## The School

Founded over 100 years ago to educate young women of character, Abbot's Hill School places great value on the development of the individual.

We are ambitious for all our pupils and they excel here. We value their voices and embrace our diverse community. As we empower them, so they empower each other and, in so doing, develop a deep sense of responsibility for their community at school, locally and in the wider world.

Children and young people will thrive best where they have a strong connection to their school and more particularly the adults who teach them. We are so proud of the quality of relationships here. The experienced professionals at Abbot's Hill take seriously their responsibility to positively shape the lives of the young people in their care. Our aim is that each individual will discover their own brilliance.

So it is that pupils at Abbot's Hill embark on a series of journeys during their time with us. The first journey, the academic journey through our well-planned and sequenced curriculum, will enrich, excite and stimulate their minds. Knowledgeable, discerning and well-informed, our pupils will be inquisitive, enquiring learners who love to learn both now and throughout their lives.

The second journey through school is the development of the values and attributes that will stand them in good stead as adults both personally and professionally. A clear set of values therefore shapes our interactions as a community and underpins our code of conduct. This unequivocal moral guidance prepares pupils to positively challenge bias and navigate with confidence the world we live in.

The third journey, the journey where we work most closely with parents, is the development of character. The attributes of collaboration, critical thinking, creativity, and communication are consciously developed and embedded through rich and varied curricular and co-curricular opportunities and so the pupils become self-aware and self-confident.

In the modern world today where the pace of change is rapid an Abbot's Hill education has tremendous relevance. Kindness, humanity and resilience will be the defining characteristics of this generation and these qualities resonate through our school.

**Mrs Sharon Schanschieff**

**Head**



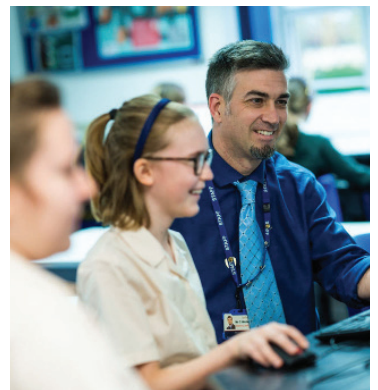
## Looking to the Future

### Our Mission

To foster a community in which all individuals are happy and inspired to live purposeful and fulfilling lives, while remaining true to our founding values of strength and character.

### Our Vision

A first choice school with outstanding environments in which to work, learn and play. We embrace diversity and provide an education fit for the modern world by challenging everyone in our community to be confident in who they are, develop strength of character and to become active, compassionate citizens who make significant and lasting contributions to others throughout their lives.



## The Role

We are looking to appoint an enthusiastic, highly motivated and dedicated Mathematics Teacher to join a department who are committed to ensuring superb outcomes for all pupils. The successful candidate should be a well-qualified classroom practitioner with excellent knowledge and a passion for teaching mathematics. They will be dedicated and committed in their approach and very well able to develop and contribute to excellence, working collaboratively within the department. The post holder will be responsible for teaching Years 7-11 (we do not, currently, have a 6th Form).

## Personal Specification

If you can challenge pupils, stimulate intellectual enquiry and do so with inventiveness and creativity through the use of mathematical investigations, problem-solving, mathematical puzzles and logic problems we would love to hear from you.

A friendly, approachable and can-do attitude as well as adaptability and resourcefulness are essential qualities, along with a high degree of personal motivation, creativity and drive.

Applications are warmly welcomed from candidates who have experience as a teacher of Mathematics, although Early Career Teachers of a high calibre will be considered.

Teachers appointed to Abbot's Hill School are expected to maintain the highest professional standards and to contribute to the co-curricular life of the community. Those who join the School can expect to become part of a caring, purposeful and committed community.

The successful candidate will be:

- An outstanding classroom teacher;
- Warm, have integrity, self-awareness, empathy and kindness;
- Equipped with excellent subject knowledge;
- creative, have strong organisational abilities, and excellent interpersonal skills
- Innovative, forward-looking and up-to-date with developments in teaching and learning;
- Committed to personal, professional development;
- Educated to at least degree level in the appropriate subject (s);
- A qualified teacher;
- Able to teach across the age-range;
- Skilled in the use of ICT for teaching purposes and the management of data;
- A good team worker and leader;
- An efficient and effective communicator;
- Organised, meticulous and reliable;
- Committed to promoting the wellbeing of students;
- Committed to the School's ethos and values.

## Key Responsibilities

Teaching, learning and curriculum

- Demonstrate a love of mathematics and to encourage all pupils to achieve excellence in their work in accordance with their ability and potential;
- To lesson plan, evaluate and adjust lessons/work plans/schemes of work as appropriate, ensuring that planning and preparation of schemes of work and individual lessons reflects excellence;
- To promote the general progress of individual students and of any class or group of students assigned to them so that students may reach their full potential;
- To write accurate reports for parents according to the school guidelines;
- To teach across the age range;
- To use teaching strategies that keep students engaged through effective questioning, lively presentation and good use of resources;
- To recognise excellent achievement and effort through appropriate and regular feedback, according to departmental and school policies;
- To participate in arrangements for preparing students for examinations and assess performance as required;
- To uphold the highest standards of preparation, teaching, and discipline;
- To optimise the use of digital strategies to enhance pupils' learning;
- To work closely with the Learning Support department to ensure access to the curriculum for all pupils;
- To attend and contribute to departmental meetings;
- To uphold school policies and procedures.

## Pastoral Care

- To be up-to-date in all matters pertaining to Keeping Children Safe in Education (KCSiE) and the school's Safeguarding and Child Protection Policy;
- To promote the general health and well-being of all pupils;
- To perform the duties of a form tutor in line with school expectations.

## Co-Curricular, Community and Partnerships

- To promote co-curricular activities and events related to the subject;
- To celebrate and communicate achievement, ensuring Maths has a high profile across all sections of the school;
- To develop good relationships with pupils, parents, teaching and non-teaching colleagues and the wider community;
- To represent the school when required;
- To support whole school events where possible;
- To seek opportunities to engage with the local community through subject-based events;
- To support a range of subject-specific trips and educational visits.

## The Department

You would be joining an enthusiastic and passionate Mathematics department that takes real pride in delivering a stimulating curriculum to our students and aims to inspire a real love for the subject.

The Mathematics department currently consists of six experienced and committed teachers who work well together to support both each other's personal development as well as students' learning.

We have close ties to the Prep School and build on prior knowledge from KS2 with a fun and varied syllabus in Years 7 and 8. Students are taught to develop the means of organising, communicating and manipulating information over a broad range of topics with an emphasis on problem-solving, investigations and practical activities. In KS4 the Department follows the Edexcel GCSE syllabus with more able mathematicians encouraged to study a further qualification alongside the GCSE, such as Ad Maths or Level 3 Algebra.

The Department has an excellent record of results at GCSE with many students choosing to do Maths courses at A-level and beyond. We are proud of our results at GCSE that included in 2022: 98.2% grades 9-4, 46.5% grades 9-7 and a value added of 1.0 but we do not rest on our laurels and work hard to improve.

Year groups have between 6 and 8 lessons a fortnight with 4 sets in each year. While students are set at the start of Year 7, the majority will go on to sit the higher tier GCSE. Differentiated activities are offered in all lessons and study support sessions are provided to those who need more time to consolidate their learning. There are also regular drop in sessions which give support for any student who would like extra help.

Students across the school also have the opportunity to participate in competitions each year including the UKMT Junior and Intermediate Mathematics Challenges. The Department also looks to regular promote maths throughout the year by celebrating special days like Pi Day. Members of the department also run a variety of co-curricular clubs that complement the wider offering of the school.

Lessons are taught in a dedicated suite of 4 classroom each with interactive technology including interactive whiteboards, projectors, visualisers, scanners and digital cameras while all students have their own Chromebooks. The school also subscribes to a number of online platforms which offer further support in lessons and for students' independent practice and homework.





## The Benefits

Abbot's Hill is a caring employer and is fully committed to the development of its staff. The school prides itself on the welcoming and inclusive staff community. The gross annual salary will be competitive and will be commensurate with the experience of the successful candidate.

### Benefits:

- Comprehensive professional development opportunities
- An employee discount platform and EAP
- Pension Scheme
- A private health cash plan scheme, after a qualifying period
- Tuition fee remission\*
- Breakfast, lunch and beverages provided during term time
- Free staff social events
- Free parking

## Application and Recruitment Process

Abbot's Hill is committed to safeguarding and promoting the welfare of children and young people and expects all staff and volunteers to share this commitment. Applicants will be required to undergo child protection screening appropriate to the post, including checks with past employers and the Disclosure and Barring Service.

Abbot's Hill recruits staff that understand and share our commitment to safeguarding and the provision of a happy, nurturing and supportive environment for all members of our community. We act to ensure that no job applicant is treated unfairly by reason of a protected characteristic as defined within the Equalities Act 2010.

All questions regarding the Abbot's Hill School Application Form and recruitment process must be directed to the school's Human Resources Department at [recruitment@abbotshill.herts.sch.uk](mailto:recruitment@abbotshill.herts.sch.uk).

Interviews will be arranged as applications are received and we reserve the right to appoint at any stage in the process.

## Application Form

Applications will only be accepted from candidates completing the Abbot's Hill School Application Form in full. CVs will not be accepted in substitution for completed Application Forms.

Application Forms can be completed electronically or in hard copy. Completed application forms should be returned to the HR Department by email: [recruitment@abbotshill.herts.sch.uk](mailto:recruitment@abbotshill.herts.sch.uk).

As jobs within the school involve substantial opportunity for access to children, it is important that you provide true and accurate information on the Application Form. Upfront disclosure of a criminal record may not debar you from appointment as we will consider the nature of the offence, how long ago and at what age it was committed, as well as any other relevant factors.

Please submit information in confidence enclosing details in a separate sealed envelope which will be seen and then destroyed by the Head or the Bursar. If you would like to discuss this beforehand, please telephone in confidence to the Head or the Bursar for advice. Please disclose any unspent convictions, cautions, reprimands or warnings.

Note that the amendments to the Exceptions Order 1975 (2013) provide that certain spent convictions and cautions are 'protected' and are not subject to disclosure to employers, and cannot be taken into account.

Guidance and criteria on the filtering of these cautions and convictions can be found at the Disclosure and Barring Service website.

The successful applicant will be required to complete a Disclosure Form from the Disclosure and Barring Service (DBS) for the post. Additionally, successful applicants should be aware that they are required to notify the school immediately if there are any reasons why they should not be working with children. This includes any staff who are disqualified from childcare or registration.

The Childcare (Disqualification) Regulations 2009 apply to those providing early years childcare or later years childcare, including before school and after school clubs, to children who have not attained the age of 8 and to those who are directly concerned in the management of that childcare.

Abbot's Hill School takes its responsibility to safeguard children very seriously and any staff member and/or successful candidate who is aware of anything that may affect their suitability to work with children must notify the school immediately. This will include notification of any convictions, cautions, court orders, reprimands or warnings they may receive. They must also notify the school immediately if they are living in a household where anyone lives or works who has been disqualified from working with children or from registration for the provision of childcare.

Staff and/or successful candidates who are disqualified from childcare or registration may apply to Ofsted for a waiver of disqualification. Such individuals may not be employed in the areas from which they are disqualified, or involved in the management of those settings, unless and until such waiver is confirmed. Please speak to the Head or the Bursar for more details.

Failure to declare any convictions (that are not subject to DBS filtering) may disqualify you for appointment or result in summary dismissal if the discrepancy comes to light subsequently.

Abbot's Hill has a legal duty under section 26 of the Counter-Terrorism and Security Act 2015 to have 'due regard to the need to prevent people from being drawn into terrorism'. This is known as the Prevent duty. Schools are required to assess the risk of children being drawn into terrorism, including support for extremist ideas that are part of terrorist ideology. Accordingly, as part of the recruitment process, when an offer is made the offer will be subject to a Prevent duty risk assessment.

If you are currently working with children, on either a paid or voluntary basis, your current employer will be asked about disciplinary offences, including disciplinary offences relating to children or young persons (whether the disciplinary sanction is current or time expired), and whether you have been the subject of any child protection allegations or concerns and if so the outcome of any enquiry or disciplinary procedure.

If you are not currently working with children but have done so in the past, that previous employer will be asked about those issues.

Where neither your current nor previous employment has involved working with children, your current employer will still be asked about your suitability to work with children. Where you have no previous employment history, we may request character references which may include references from your school or university.

You should be aware that provision of false information is an offence and could result in the application being rejected or summary dismissal if you have been appointed, and a possible referral to the police and/or DBS.

Applicants will be short-listed according to the relevance and applicability of their professional attributes and personal qualities to the role. Short-listed applicants will then be invited to attend a formal interview at which their relevant skills and experience will be discussed in more detail.

All formal interviews will have a panel of at least two people chaired by a member of Senior Staff. The interviewers involved will be required to state any prior personal relationship or knowledge of any of the candidates and a judgement will be made by the Head

or Bursar as to whether or not an interviewer should therefore withdraw from the panel.

Should the Head or Bursar have a conflict of interest, the non-conflicted party shall decide whether the conflicted party should withdraw from the panel.

All candidates invited to interview must bring documents confirming any educational and professional qualifications that are necessary or relevant for the post (e.g. the original or certified copy of certificates, diplomas etc.)

Where originals or certified copies are not available for the successful candidate, written confirmation of the relevant qualifications must be obtained by you from the awarding body.

All candidates invited to interview must also bring with them:

- A passport, current driving licence including a photograph or a full birth certificate;
- A utility bill or financial statement issued within the last three months showing the candidate's current name and address;
- Where appropriate any documentation evidencing a change of name;
- Overseas candidates must provide evidence of their right to work and reside in the UK in line with current government guidelines

Please note that originals of the above are necessary. Photocopies or certified copies are not sufficient. Candidates with a disability who are invited to interview should inform the school of any necessary reasonable adjustments or arrangements to assist them in attending the interview.

### Conditional Offer of Appointment: Pre-Appointment Checks

Any offer to a successful candidate will be conditional upon:

1. Receipt of at least two satisfactory references;
2. Verification of identity and qualifications including, where appropriate, evidence of the right to work in the UK;
3. A satisfactory enhanced DBS check and if appropriate, a check of the Barred List maintained by the DBS;

4. For a candidate to be employed as a teacher, a check that the candidate is not subject to a prohibition order issued by the Secretary of State;
5. Teaching candidates who have lived or worked outside the UK will be required to provide proof of their past conduct as a teacher;
6. Verification of professional qualifications;
7. Verification of successful completion of a statutory induction period (for teaching posts - applies to those who obtained QTS after 7 May 1999) where relevant;
8. Where the successful candidate has worked or been resident overseas within the last ten years, such checks and confirmations as the school may consider appropriate so that any relevant events that occurred outside the UK can be considered;
9. Satisfactory medical fitness;
10. Receipt of a signed Staff Suitability Declaration form showing that you are not disqualified from providing childcare under the Childcare (Disqualification) Regulations 2009;
11. If you are undertaking a leadership role, evidence that you have not been prohibited from participating in the management of independent schools.

It is the school's practice that a successful candidate must complete a pre-employment health questionnaire. The information contained in the questionnaire will then be held by the school in strictest confidence. This information will be reviewed against the Job Description and the Person Specification for the particular role, together with details of any other physical or mental requirements of the role i.e. proposed workload, co-curricular activities, layout of the school.

Abbot's Hill School is aware of its duties under the Equality Act 2010.

No job offer will be withdrawn without first consulting with the applicant, considering medical evidence and considering reasonable adjustments.

## References

We will seek the references referred to above for shortlisted candidates and may approach previous employers for information to verify particular experience or qualifications, before interview.

If you do not wish us to take up references in advance of the interview, please notify us at the time of submitting your application.

All referees will be asked if the candidate is suitable to work with children.

The school will compare any information provided by the referee with that provided by the candidate on the application form. Any inconsistencies will be discussed with the candidate.

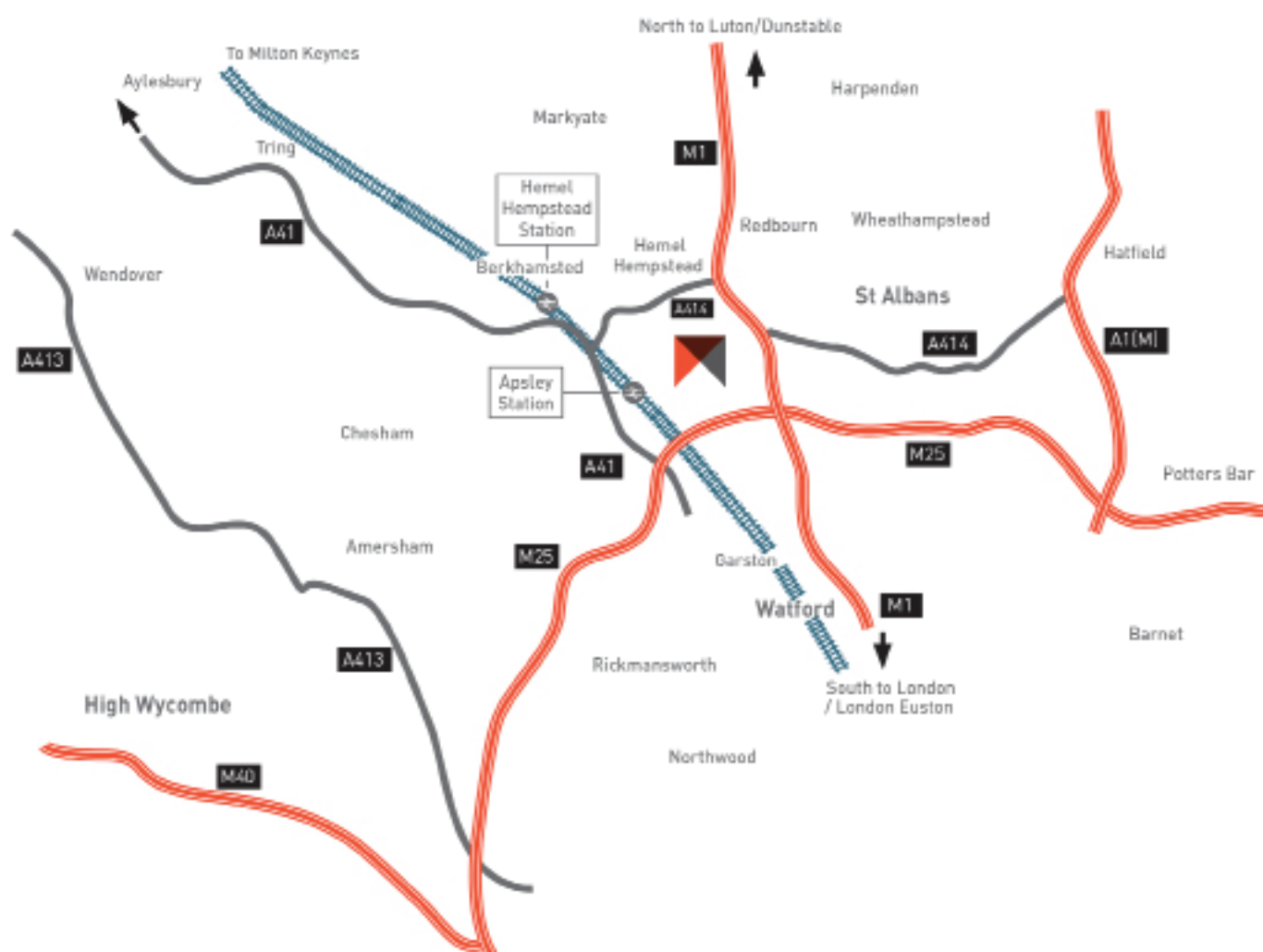
The school will refer to the Department for Education document, 'Keeping Children Safe in Education' and any amended version in carrying out the necessary required DBS checks. The school complies with the provisions of the DBS Code of Practice, a copy of which may be obtained on request.

## Criminal Records Policy

The school will comply with its obligations regarding the retention and security of records in accordance with the DBS Code of Practice and its obligations under its Data Protection Policy.







Abbot's Hill School is committed to safeguarding and promoting the welfare of children and young people.  
The post is subject to pre-employment checks including an enhanced DBS and satisfactory references.  
Registered Charity 311053.

The school's Privacy Notice can be viewed online at:  
<http://bit.ly/AHSPrivacyNotice>  
or via our website.

Bunkers Lane, Hemel Hempstead  
Hertfordshire HP3 8RP

Tel: 01442 240333  
[recruitment@abbotshill.herts.sch.uk](mailto:recruitment@abbotshill.herts.sch.uk)

[www.abbotshill.herts.sch.uk](http://www.abbotshill.herts.sch.uk)