

# SIXTH FORM 2021/2022

Harrow Collegiate



# Welcome

Thank you for your interest in Park High School's Sixth Form.

We offer a wide range of courses. The breadth of the courses we offer is greatly enhanced by our membership of the Harrow Sixth Form Collegiate: we work in partnership with local high schools and colleges to ensure that all our sixth formers can follow their desired pathway.

Having said that, Park High's Sixth Form curriculum offer is broad, so there will be plenty of choice for the vast majority of students who wish to study A Levels. We try and offer smaller class sizes and ensure high levels of success. This is seen in our destinations, where we have sent our students to some of the very best universities in the country to study a wide range of subjects. We have linguists, mathematicians and architects at Cambridge, medics at Oxford, dentists at Bristol, English Literature students and philosophers at Warwick, scientists and engineers of every kind at universities all across the country, and ex-Park High social scientists, lawyers and criminologists are widespread too. Whatever your area of intended study, we will have a success story for you. We even have ex-students studying for their degrees in the top universities in the US. The only limits to what you might achieve are those you construct for yourself!

Our mission is a simple one: to help our young people, every day, to be the best possible versions of themselves.

With best wishes.

Yours sincerely



Mrs Colette O'Dwyer  
Headteacher

“The sixth form is outstanding because students make exceptional progress. In many subjects the progress they make by the end of Year 13 is in the top 10% nationally.”  
- Ofsted 2013





Thank you for your interest in Park High Sixth Form. We are a high-achieving, popular post-16 institution which values each and every individual, creating a supportive environment conducive to academic success and the nurturing of young people.

Along with the rest of the school, our Sixth Form was judged Outstanding by Ofsted in its 2013 inspection. This is also reflected in our excellent outcomes. In 2019 our English A Level results from 2018 were demonstrated to be the top in the country in terms of student value added. Our philosophy and ethics A Level results from the same year were number 19 in the entire country.

Our school's ethos of high expectations and individual care and support continues into Sixth Form. In addition to outstanding teaching and learning, our sixth formers enjoy a wide range of enrichment offers, trips and activities and are expected to carry out leadership roles in the school and local community. This is reinforced by a pastoral and wellbeing programme, developing further the spiritual, moral, social and cultural education of the young people in our care. We aim to ensure that the students who leave our Sixth Form will have developed into well motivated, articulate and courteous young adults, fully prepared for university or working life. Our students will be thoroughly equipped to meet the many challenges ahead with confidence and self-assurance.



Ms N Barker  
Head of Sixth Form

# Aims & Values

The Park High School Sixth Form is a community which respects and nurtures individual talent, personal freedom and responsibility, intellectual curiosity and public service.

Life as a Sixth Form student is exciting and challenging in so many ways. Here at Park High School students are progressively given more autonomy and independence within a firm framework of support and guidance, to ensure that their full potential is realised.

Sixth Form students have their own common room and quiet study areas but are still very much part of the school. Sixth Formers may elect to be School Captains and, through the Sixth Form Council, play an important role in the organisation and management of the school.

Students' progress is constantly monitored through regular assessments, interviews and reports as well as parent consultation and review days, to ensure that they are achieving to the very best of their ability.

We have identified three key priorities for our School and Sixth Form. These are:

- To promote and provide a holistic education where we celebrate achievement, academic excellence, creativity and personal growth.
- To continue to build on and nurture the relationships which are the cornerstone of the school and support students in understanding the value of courtesy, hard work and respect.
- To provide opportunities which enrich our students' lives now and, in the future.

## Park High School Code

- Keep safe and keep others safe.
- Be part of a school that allows people to learn.
- Help others whenever you can.
- Bring credit to Park High School in our community.
- Make those you care about proud of you.

Our School Code is frequently referenced and supports the high expectations and standards we have adopted. Students and parents are expected to sign a Home-School Agreement in the enrolment pack.



# Pastoral Care



At Park High Sixth Form we want every student to feel safe and supported. We place a high value on gaining a holistic view of our students and developing an understanding of their individual needs. This starts from our induction programme which seeks to help students with the transition to post-16 study. Parent and Carers are also invited to meet the Sixth Form team in the first 2 weeks.

We recognise that post-16 programmes of study are demanding and as such want to ensure that the young people in our care have a range of resources available to draw upon during their time at our Sixth Form. This includes a dedicated pastoral staff team made up of:

- Ms Barker the Head of Sixth Form.
- Ms Kothari the Sixth Form Administrator and safeguarding contact.
- Mr Samuels a pastoral support assistant, who specifically monitors attendance & punctuality.
- An experienced, specialised Sixth Form tutor team. Every student is a part of a tutor group and will meet their tutor daily.

Our pastoral team is key in liaising with home and Sixth Form and is a vital link in ensuring that school and home work together to support each child.

We place great importance on our extensive offer of interventions that are based on the individual needs of each student. This includes mentors, mental-health support, catch-up clubs, study skills sessions and many other activities or programmes that can support our Sixth Formers to develop and grow. We recognise that every student is different, unique and bursting with potential, and at Park High we aim to celebrate and develop this.

Regular attendance at our Sixth Form is essential to ensure that your child has every opportunity to reach their potential. Evidentially there is a direct correlation between attendance and attainment. Therefore, we monitor attendance and punctuality carefully and we expect every student to achieve at least 98% attendance.

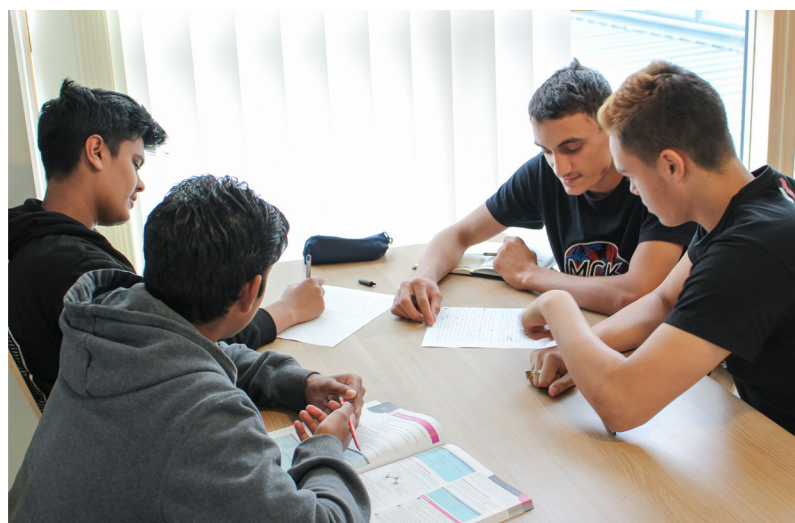
Our Sixth Form operates an effective Rewards and Engagement policy which includes a privilege pass system. This recognises the many students who meet expectations regarding attendance and punctuality and who show that they have effectively adopted a 'Sixth Form mindset'.



# Facilities









# Guidance & Careers

---

It is important that all students are fully supported and guided through the process of planning their futures. With a full time, careers and employability coordinator, a professional careers adviser and a programme of education, information, advice and guidance for all Sixth Formers, we believe Park High students will be well prepared for their futures.

We have a full programme of careers education which will help students to develop the knowledge and skills to understand themselves, research the opportunities available, make decisions and move successfully on to the next stage. The programme is delivered through PSHCEe, UCAS week, special events, enrichment programmes, visits, trips and assemblies and also within individual departments and form time.

We are very proud of our extensive and strong links with employers and further and higher education providers who work closely with students through work experience placements, talks, visits, interview preparation, careers fairs and work-related learning events. In addition, we offer a comprehensive programme of support for those students applying to competitive courses and universities. This includes providing students with access to an extensive research and recording platform called 'Unifrog'.

Our commitment to careers education, information, advice and guidance was recognised nationally in 2018 when we were awarded The Quality in Careers Standard through Investors in Careers. This reflects the quality of the provision and resources available to students.

## Partnership with Immanuel College – Medicine and Oxbridge programmes.

Students are offered a personalised opportunity to prepare for Oxford and Cambridge and medicine post 18 applications, through our partnership with Immanuel College. We are the only Sixth Form in the borough who has links with this independent school in Bushey and the prestigious programme it offers.

For prospective medics this includes UKCAT and BMAT workshops, mock exams and conferences on topics such as 'Ensuring a competitive medicine application'.

For prospective Oxbridge applications, students attend preparatory workshops and gain additional support with personal statements as well as to have practice mock interviews.

## Partnership with Christ's College, Cambridge

Christ's College, Cambridge is our link college and we work closely with them to provide an Oxbridge and Russell Group access programme. This includes visits to Cambridge, support with personal statement writing, and further information and workshops for prospective applicants.

## Partnership with Harrow School

Park High Sixth Form's close proximity to Harrow School provides opportunities for students to attend a number of interesting talks and workshops. A recent example is Professor Sir Brian Hoskins from Imperial College speaking on 'Climate Change – What Does the Future Hold?'

In July, Year 12s are invited to attend the Lumina course at Harrow School. Over three days students can learn more about Oxbridge, its admissions process and how to choose the right course and college.





# Enrichment, Trips & Activities

At Park High Sixth Form, experience needs to be much more than just studying the A-Levels students have chosen. We want to provide students with a range of opportunities and experiences that enhance their CV, employability and overall skill set. By the end of Year 12, students will be able to compile a personal statement for university and future employers that reflects them as a person, and not just as a learner. Students' personal statements on either a UCAS application form or an apprentice/job application form are crucial in presenting their many qualifications and qualities.

Park High Sixth Form has an extensive range of enrichment activities. These are organised into eight-week programmes under three headings depending on whether they look to enhance students' body, mind or soul (although these are all subject to Government advice in the coming year). These include:

<u>Mind</u>	<u>Body</u>	<u>Soul</u>
<ul style="list-style-type: none"><li>• EPQ</li><li>• MOOC's</li><li>• Debating society</li><li>• Masterclasses</li><li>• Young enterprise</li><li>• Work experience</li></ul>	<ul style="list-style-type: none"><li>• Sports</li><li>• Self defence</li><li>• Yoga</li><li>• Duke of Edinburgh</li></ul>	<ul style="list-style-type: none"><li>• Maths Maker</li><li>• Curriculum support</li><li>• Reading and learning mentors</li><li>• Make a difference</li></ul>



## AQA EPQ

We offer all Year 12 students the opportunity to complete an Extended Project Qualification (EPQ) on a topic of their choice. This is a research-based qualification which takes the form of either a 5000-word essay or an artefact and 2000-word essay. It is promoted by many of the top universities and is equivalent in UCAS points to an AS Level thus operating essentially as a 'fourth' option choice.



“The graduation trip to Oxford University was informative and allowed us to reflect on the programme. The Scholars Programme has opened doors for us and enabled us to believe we can apply to university.”

## Brilliant Club Scholars Programme

Park High Sixth Form is fortunate to work with the award-winning Brilliant Club charity and to participate in its Scholars Programme which recruits, trains and places doctoral and post-doctoral researchers in state schools to deliver programmes of academic enrichment to small groups of pupils. Through a combination of university trips, in-school tutorials and online resources, our Sixth Formers who participate develop the knowledge, skills and ambition needed to progress to highly selective universities. It culminates in an essay submission and graduation ceremony at either Oxford or Cambridge.

## School Leaders and Head Boy & Head Girl

We want to empower our students to become leaders and thus to have the opportunity to participate in the running of the Sixth Form and to organise events across the school. They work with the Sixth Form team to organise social events such as the Prom, breakfasts, quizzes and assemblies, in addition to leading on clubs and a mentorship scheme with younger years.

## Prom

At the end of Year 13, post-exams, our students enjoy ‘graduation’ from the Sixth Form through the Prom. This is an exciting evening where students celebrate finishing their programme of study, enjoy an evening in each other’s company and of course have a chance to get dressed up!



# Enrichment, Trips & Activities





## Trips

Subject specific, career focused, or an enrichment opportunity, we aim to enable all students to attend educational visits during their time here, and there are lots to choose from including:

- Old Bailey
- London Zoo
- Wellcome Collection
- Tate Modern
- Imperial College
- Kings College London
- Plymouth University
- Geography field trip to Dorset or the Lake district
- Biology field trip
- Athens
- Berlin





Park High is a school committed to the personal development of our pupils and this includes the Sixth Form. We have a high-quality provision of Personal, Social, Health, Citizenship and Economic education (PSHCEe). Students have one lesson per week with their tutor on a rolling timetable which includes topics such as financial education, well-being, post-18 pathways and Sixth Form study skills.

This curriculum has been recognised nationally. We have achieved the FPA Brook Award with our Healthy Relationships programme, shortlisted by a panel of young people as being in the top five in the country for showcasing excellent delivery. We are a part of government guidance report on best practice in Healthy Relationships, First Aid and Refugee education. With respect to these areas, we have also been used by the British Red Cross as an exemplary example.

We also have a pro-active PSHCEe Advisory Body and Pride Youth Network (PYN) group. The PYN has been recognised nationally for its work when they were awarded the Citizenship Foundation Circle of Life Award and were shortlisted as finalists for the Global Youth Awards 2019. It has also helped the school to achieve Stonewall Bronze Award status.



“We have a high quality provision of PSHCEe at Park High which has been recognised nationally.”







# Art & Design

**Exam Board:**

AQA

**Course Specification:**

7201

**Qualification obtained:**

AQA Advanced GCE in Art and Design

**Lead Teacher:**

Mr Lordan

**Email:**

slordan1.310@parkhighstanmore.org.uk

## Subject Overview

This is a creative course for individuals with a GCSE in Fine Art, Graphics or Photography. A Level Art & Design incorporates fine art, graphic communication and photography. There is an initial foundation term in the Autumn of Year 12, followed by the Personal Investigation unit supported by written material in Year 12 and into Year 13. Specific specialisms can be architecture, fashion design, textiles, graphic communication, illustration, animation, photography, film, sculpture and fine art. We also provide the opportunity for students to be enrolled in the Royal Academy attRAct programme. In Year 13 students will be given their externally set assignment.

There are 2 components to A level Art:

- Component 1- The Personal Investigation. Students are required to conduct a practical investigation, into an idea, issue, concept or theme, supported by written material. The focus of the investigation must be identified independently by the student and must lead to a finished outcome or a series of related finished outcomes.
- Component 2- the Externally set assignment. Following the preparatory period, students must complete 15 hours of unaided, supervised time.

## Progression Routes:

Students can go on to university and study at degree level or take higher education in art and design, then aim to join the world of architecture, advertising, graphics design, illustration, typography, painting, sculpture, textile design, fashion design, interior design, photography, film and television, animation, theatre design, costume design and set design.

## Subject requirements:

- Grade 6 in Art and Design
- Grade 5 English Language
- Grade 4 English Literature
- Grade 4 in Mathematics

“A level Art and Design has been one of my favourite subjects as it allowed me to interpret my ideas into my drawings in a more creative way than before. I hope to study animation at degree level sometime in the near future.”



**Exam Board:**

Edexcel

**Course Specification:**

9BS0

**Qualification obtained:**

Pearson Edexcel Level 3 Advanced GCE in Business

**Lead Teacher:**

Mrs Sethi

**Email:**

[m.sethi@parkhighstanmore.org.uk](mailto:m.sethi@parkhighstanmore.org.uk)

## Subject Overview

Students will apply their knowledge and understanding to real-life business contexts, with updated content to reflect the issues impacting on modern businesses in our specification and real business case studies in all our assessments. Students are introduced to business in Themes 1 and 2 through building knowledge of core business concepts and applying them to business contexts to develop a broad understanding of how businesses work. Breadth and depth of knowledge and understanding, with applications to a wider range of contexts and more complex business information, are developed in Themes 3 and 4, requiring students to take a more strategic view of business opportunities and issues.

Students are encouraged to use an enquiring, critical and thoughtful approach to the study of business, to understand that business behaviour can be studied from a range of perspectives and to challenge assumptions.

## Progression Routes:

The course develops some important skills such as the ability to think critically and is therefore highly regarded by universities and employers. Students will develop transferable skills that support higher education study and the transition to employment, including numeracy, communication, an understanding of the business environment and commercial awareness. Students can progress from this qualification to:

- Higher education courses such as business management, business administration, accountancy and finance, human resource management, marketing, retail management, tourism management and international business
- A wide range of careers ranging from banking/finance, accounting, marketing, sales, product management and general management to working in public sector organisations or charities.

Former students have entered banking, accounting and finance, media, business management, international business, human resource management, marketing and the leisure industries.

## Subject requirements:

- Grade 5 in English Language
- Grade 4 in English Literature
- Grade 5 in Mathematics

“Business touches every aspect of the world we live in. It is a very relevant and current subject where you learn a lot. Useful for both future academic and personal progression”



# Computer Science

**Exam Board:**

OCR

**Course Specification:**

H046

**Qualification obtained:**

OCR A Level in Computer Science

**Lead Teacher:**

Ms Tisson

**Email:**

mtisson2.310@parkhighstanmore.org.uk

## Subject Overview

Computer Science is a linear qualification with 100% external assessment. It is a practical subject where students can apply the academic principles learned in the classroom to real world systems. There is a great emphasis on mathematical skills used to solve problems.

The two examined components are: 'Computing principles', and 'Algorithms and programming'.

For the 'Computing principles' component, students will learn about the following topics: the characteristics of contemporary processors; input, output and storage devices; software and software development; programming; exchanging data; data types, data structures and algorithms; legal, moral, ethical and cultural issues.

For the 'Algorithms and programming' component, students will: understand what is meant by computational thinking; understand the benefits of applying computational thinking to solving problems and be able to use algorithms to describe problems.

For their programming project, students will choose a computing problem to work through according to the guidance of the specification. This requires them to analyse, design, develop and evaluate a solution.

## Progression Routes:

This can lead to degree level courses with possibilities including Computer Science, Multimedia, Web Design, Software Engineering, Artificial Intelligence, Business Systems and Electronics.

## Subject requirements:

- Grade 6 in Computer Science
- Grade 5 in English Language
- Grade 4 in English Literature
- Grade 5 in Mathematics

# Drama & Theatre

**Exam Board:**

Edexcel

**Course Specification:**

9DR0

**Qualification obtained:**

Pearson Edexcel Level 3 Advanced GCE in Drama and Theatre

**Lead Teacher:**

Mrs Molloy

**Email:**

[lleigh2.310@parkhighstanmore.org.uk](mailto:lleigh2.310@parkhighstanmore.org.uk)

## Subject Overview

This two-year course is especially for designed for students who have a passion and interest for drama and theatre.

A level Drama and Theatre encourages the development of creativity, practical working, self-discipline and literacy skills, supporting progression to further study of drama and a wide range of other subjects. Students become confident, collaborative and risk-taking learners, well-equipped for many careers and further study. The course has a clear and strong academic underpinning through its study of set texts, practitioners and historical theatre performances, but also encourages learners to be fresh and current with a clear comprehension of modern theatre.

A Level Drama at Park High School is taught in collaboration with Canons High School. Students share the amazing expertise of both faculties in each school giving them a unique and fantastic learning experience.

This course is particularly suitable for students who have studied GCSE Drama, English, Dance or History and wish to study Theatre at a higher level. The content allows students to study a subject which can be extended through higher education and promotes a clear understanding of creative study and the wider context of Drama and Theatre.

## Progression Routes:

As an Arts-based subject Drama and Theatre will open a range of pathways post-18 including: Drama, Technical Theatre, Teaching, Law, Psychology, English, Creative Writing, History, Stagecraft, Arts Management, Politics, Sociology and Dance.

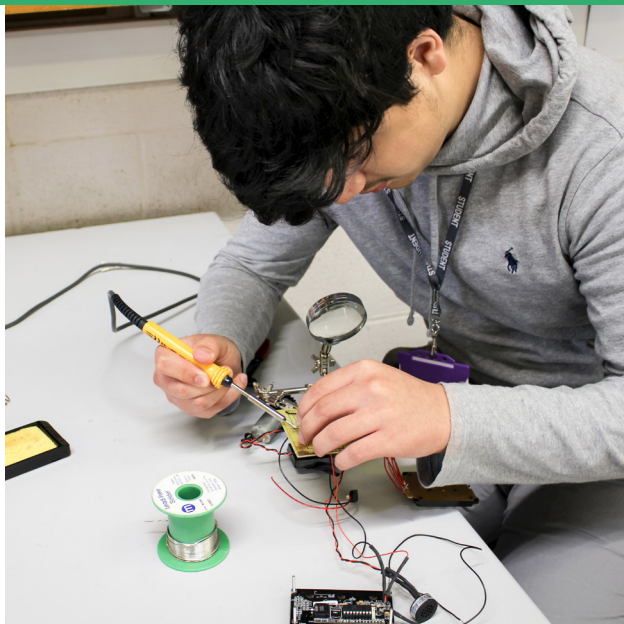
## Subject requirements:

- Grade 6 in Dance or Drama
- Grade 5 in English Language
- Grade 4 in English Literature
- Grade 4 in Mathematics

“Studying Drama has developed my confidence in so many ways. It has allowed me to have much more awareness of myself and my emotions. The course is so enjoyable and creative, it allows you to discover more about wider society and the issues we face, giving me a different perspective. The written aspects of the course have supported my learning in English. I would highly recommend Drama and Theatre to any prospective student.”



# Design & Technology

**Exam Board:**

AQA

**Course Specification:**

7552

**Qualification obtained:**

AQA Advanced Level GCE in Design and Technology:  
Product Design

**Lead Teacher:**

Mrs N Kerai

**Email:**

nkerai1.310@parkhighstanmore.org.uk

## Subject Overview

This creative and thought-provoking qualification gives students the practical skills, theoretical knowledge and confidence to succeed in a number of careers. Especially those in the creative industries.

Students will investigate historical, social, cultural, environmental and economic influences on design and technology, whilst enjoying opportunities to put their learning in to practice by producing prototypes of their choice.

Students will gain a real understanding of what it means to be a designer, alongside the knowledge and skills sought by higher education and employers. The course allows learning to be taken out of the classroom and into manufacturing industries to experience Design and Technology in manufacturing and producing products for consumers.

## Progression Routes:

- All fields of design including product, 3D, Interior, fashion, textiles, footwear, exhibition, jewellery, furniture
- All fields of engineering including civil, mechanical, automotive, aeronautical, marine, environmental, design engineering
- TV/film sectors including set design, model making and special effects
- Advertising and communications industry including digital marketing
- Architecture and the built environment, town planning

## Subject requirements:

- Grade 6 in any Design & Technology Subject
- Grade 5 for GCSE English Language
- Grade 5 for GCSE English Literature
- Grade 5 for GCSE Mathematics

*“Studying Design Technology at A Level allows me to explore my creativity in a way I feel most subjects may restrict. The process of learning about materials and processes allows me to understand how the products we use on a daily basis are made.”*

**Exam Board:**

AQA

**Course Specification:**

7136

**Qualification obtained:**

AQA Advanced Level GCE in Economics

**Lead Teachers:**

Mrs Pindoria

Mrs Kapur

**Email:**

[mpindoria1.310@parkhighstanmore.org.uk](mailto:mpindoria1.310@parkhighstanmore.org.uk)

[b.kapur@parkhighstanmore.org.uk](mailto:b.kapur@parkhighstanmore.org.uk)

## Subject Overview

A-level Economics will give you an excellent understanding of how economies allocate their scarce resources to meet the needs and wants of their citizens. You will develop a greater understanding of the economic problems which face individuals, firms and governments on a local, national and global level and the alternative ways these problems can be resolved. You will investigate microeconomic topics such as how individual decisions impact economic outcomes, the importance of competition, how markets operate and why they fail and how the distribution of income and wealth is affected. At the same time you will learn about macroeconomics, looking at the 'big picture' of how our national economy fits into the global context, the global impact of financial markets and monetary policy and the operation of the international economy.

## Progression Routes:

An A-level in Economics will benefit you if you are looking to go on to study economics, business or finance at university. The skills you acquire will help you no matter what degree course you choose. You may choose to pursue a career in a directly related field such as banking or finance.

The A-level course in Economics will stand you in good stead by giving you an insight and understanding of the economic forces that impact your day to day activities. Alternatively, you may decide to follow a career path which isn't directly related to your course of study. The analytical and evaluation skills that you will have developed will be useful whatever path you choose in the future.

## Subject requirements:

- Grade 5 in English Language
- Grade 4 in English Literature
- Grade 5 in Mathematics

“Economics is about the world around us, it is the study of humankind; the study of how individuals, firms and governments interact with each other to allocate scarce resources. My journey through economics over the two years has developed my understanding of how increasingly the world has become interconnected. It has placed an importance on constantly evolving economic issues such as unemployment, inflation and growth, as well as providing me with valuable knowledge for making well informed choices in our everyday life. “



# OUTSTANDING A LEVEL PERFORMANCE

## English Literature

**Highest Average Student Progress  
in this subject in England**

(2018 DfE published Value Added tables)

## Park High School

# 2018

**OXFORD** ANALYTICS

Supporting post-16 providers in  
raising student achievement

“Teachers have outstanding subject knowledge and use imaginative and stimulating resources. They are very skilful at showing students how to work independently and think for themselves and at giving them time to work together and share their understanding.” - Ofsted 2013

# English Literature

**Exam Board:**

OCR

**Course Specification:**

H472

**Qualification obtained:**

OCR A Level in English Literature

**Lead Teachers:**

Ms Halpin

**Email:**

[t.halpin@parkhighstanmore.org.uk](mailto:t.halpin@parkhighstanmore.org.uk)

## Subject Overview

This course is designed to develop a continued interest in English Literature. Students will be encouraged to read critically and independently, across centuries, genre and gender. Candidates respond to these texts in analytical and creative ways and are assessed through coursework (20%) and examination (80%). A minimum of eight texts covering prose, poetry and drama. The course encourages a studied development as a confident, independent and reflective reader of a range of texts, learning to express responses effectively through speech and writing.

In 2018, Park High School was awarded a certificate for 'Outstanding A level Performance' – according to DfE data, we had the highest average student progress in this subject in England!

## Progression Routes:

Literature, media, journalism, law, politics, psychology, sociology, history, geography; all professions and courses that involve the necessity for good analytical skills, strong communication and empathy.

## Subject requirements:

- Grade 6 in English Language
- Grade 6 in English Literature
- Grade 4 in Mathematics

"I am very happy with my teachers. I get helpful feedback from the assessed home learning I do each week, which is excellent."



# Geography

**Exam Board:**

Edexcel

**Course Specification:**

9GEO

**Qualification obtained:**

Pearson Edexcel Level 3 Advanced GCE in Geography

**Lead Teacher:**

Ms Lee

Ms Little

**Email:**

[v.lee@parkhighstanmore.org.uk](mailto:v.lee@parkhighstanmore.org.uk)

[klittle.310@parkhighstanmore.org.uk](mailto:klittle.310@parkhighstanmore.org.uk)

## Subject Overview

Geography is an exciting and dynamic subject that allows us to analyse some of the day to day landscapes and events that surround us. The course we are following is EdExcel B that is an issues based approach to studying Geography; enabling students to explore and evaluate contemporary geographical questions and issues such as the consequences of globalisation, responses to hazards, water insecurity and climate change, and issues of identity. Many of these issues are regularly highlighted in the news and as our economic, political and physical environments around us are evolving, Geography has never been more relevant.

Geography is one of the few subjects that combines the ability to analyse data through the use of statistics, whilst also developing critical thinking and the ability to write extended answers. Geography, along with only two other subjects has a coursework component which allows pupils to show demonstrate their ability to plan, carry out an investigation and then provide a detailed written analysis.

## Progression Routes:

Geography is considered a facilitating subject by the Russell Group Universities and so can be used to support entry into a number of subjects including Engineering, Development Studies, Environmental Studies, Town Planning, Law (please note this is not an exhaustive list but rather a guide).

At university Geography can, of course, be studied as a subject in its' own right. We have had students every year going on to study Geography both as BSc and BA courses. Some have also gone on to study Geography as a joint-honors with subjects such as Economics, Geology, and Languages.

Geography graduates are still some of the most easily employable due to the variety of skills learnt and the different foci that can be followed and thus allow many different career paths to be followed, from teacher to lawyers or engineers.

## Subject requirements:

- Grade 6 in Geography
- Grade 5 in English Language
- Grade 4 in English Literature
- Grade 5 in Mathematics

*"Geography is all encompassing; it makes the world make sense. It links other subjects together and the skills that you learn are useful for everything"*

**Exam Board:**

OCR

**Course Specification:**

H505

**Qualification obtained:**

OCR A Level in History A

**Lead Teachers:**

Ms Salkeld

**Email:**

hsalkeld1.310@parkhighstanmore.org.uk

## Subject Overview

A course designed to delve deep into British and world history.

History A-level builds on the skills and knowledge base from GCSE. Students are trained in how to write, research and argue in depth and at university level on a range of topics. We study the history of more than just Britain, looking at Europe and the wider world in all of our units. We undertake a thematic study, covering an extended period of history of over 150 years. Students explore a topic in history they have an interest in through the coursework element.

Our aim is to create independent learners, critical thinkers and decision-makers – all personal assets that can make them stand out as they progress to higher education and/or the workplace.

## Progression Routes:

Post-18 study: History is extremely highly regarded by Oxbridge and Russell Group universities for the fact that it trains all students in the kinds of research and written skills required to succeed at university. It is well regarded even in sciences and medicine.

Post-18 employment: History is a great subject for developing confidence and personal expression- vital in any job. Furthermore, it develops the ability to process information and respond to it rapidly and under pressure.

## Subject requirements:

- Grade 6 in History
- Grade 5 in English Language
- Grade 4 in English Literature
- Grade 4 in Mathematics

“History A-level has been an exciting experience so far and although it may be a leap from GCSE, the support from the department has been amazing. Learning about the Wars of the Roses and the Cold War has been extremely eye-opening. Moreover, the concepts and skills we are learning from History A-level would be very beneficial for our future career paths.”



# Mathematics

**Exam Board:**

Edexcel

**Course Specification:**

9MA0

**Qualification obtained:**

Pearson Edexcel Level 3 Advanced GCE in Mathematics

**Lead Teacher:**

Miss Halai

**Email:**

[rhala6.310@parkhighstanmore.org.uk](mailto:rhala6.310@parkhighstanmore.org.uk)

## Subject Overview

Students will study the Pearson Edexcel Level 3 Advanced GCE in Mathematics. It is split into two components, Pure and Applied, the latter of which consists of Statistics and Mechanics in an equal weighting.

Assessments are designed to reward students for demonstrating the ability to provide responses that draw together different areas of their knowledge, skills and understanding from across the full course.

Mathematical problem solving, argument, modelling language and proof are the overarching themes which should be applied along with associated mathematical thinking and understanding, across the whole of the detailed content. These overarching themes are inherent throughout the content and students are required to develop skills in working scientifically over the course of these qualifications.

## Progression Routes:

A-Level Mathematics allows students to develop various skills such as problem solving, analysing data, the ability to think logically and using and interpreting graphs. Mathematics can open many doors in terms of future opportunities and is a sought-after subject by many employers. As such, students can progress from this qualification into any further studies in Mathematics or a Mathematics-related subject such as Statistics, Physics, Engineering, Computer science, Economics, or Accounting and Finance.

## Subject requirements:

- Grade 6 in Mathematics
- Grade 4 in English Language
- Grade 4 in English Literature

*"My experience studying mathematics over the last year has enabled me to see how mathematical theories apply to day to day life, it has allowed me to comprehend and embrace a more statistical and logical way of thinking."*

# Further Mathematics

**Exam Board:**

Edexcel

**Course Specification:**

9MA0

**Qualification obtained:**

Pearson Edexcel Level 3 Advanced GCE in Mathematics

**Lead Teacher:**

Miss Halai

**Email:**

[rhala6.310@parkhighstanmore.org.uk](mailto:rhala6.310@parkhighstanmore.org.uk)

## Subject Overview

Students will study the Pearson Edexcel Level 3 Advanced GCE in Further Mathematics.

It is split into two components, 2 compulsory units and 2 optional units, further details of which are below.

Assessments are designed to reward students for demonstrating the ability to provide responses that draw together different areas of their knowledge, skills and understanding from across the full course.

Mathematical problem solving, argument, modelling language and proof are the overarching themes which should be applied along with associated mathematical thinking and understanding, across the whole of the detailed content. These overarching themes are inherent throughout the content and students are required to develop skills in working scientifically over the course of these qualifications.

## Progression Routes:

A-Level Mathematics allows students to develop various skills such as problem solving, analysing data, the ability to think logically and using and interpreting graphs. Mathematics can open many doors in terms of future opportunities and is a sought-after subject by many employers. As such, students can progress from this qualification into any further studies in Mathematics or a Mathematics-related subject such as Statistics, Physics, Engineering, Computer science, Economics, or Accounting and Finance.

## Subject requirements:

- Grade 6 in Mathematics
- Grade 4 in English Language
- Grade 4 in English Literature

*"The way in which the mathematics department help me understand topics are by letting me prove an equation rather than it being given to me."*

*"The mathematics department provide a wide range of difficult questions such as STEP which helps to understand the topics in more depth."*







# Media Studies

**Exam Board:**

WJEC Eduqas

**Course Specification:**

603/1149/6

**Qualification obtained:**

WJEC Eduqas GCE A Level in Media Studies

**Lead Teachers:**

Mrs H. Galdin-O'Shea

**Email:**

[h.o'shea@parkhighstanmore.org.uk](mailto:h.o'shea@parkhighstanmore.org.uk)

## Subject Overview

A-level Media Studies will give you an excellent understanding of how the creative industries (the fastest growing part of the UK economy) operate. This includes questions of ownership, means of production and distribution, regulation as well as targeting and reaching national and global audiences. You will develop a deep understanding of how media texts are encoded with meanings and messages by their producers, and how audiences receive and respond to these messages according to their situated contexts. The study of theoretical perspectives will focus your analysis on ways in which social groups, issues and events are portrayed, and the ideological effects of these representations. You will learn about both the disruptive and innovative impact of digital technologies on a range of media industries. At the same time, you will learn some practical skills in photography, video production and editing, culminating in an audio-visual cross-media production.

## Progression Routes:

Studying media studies at university can give you a whole host of exciting career options, including: Advertising, Journalism, Marketing, Designer, cinematographer, editor etc in the TV, film, radio or digital sector, Academia. However, because part of the content is humanities-based, studying this subject can also open a range of pathways including law, forensic, social work, teaching, the arts etc.

The skills and cultural capital, including around current affairs, you acquire will help you no matter what degree course you choose.

## Subject requirements:

- Grade 4 in English Language
- Grade 4 in English Literature
- Grade 4 in Mathematics

"Studying Media has forced me to look again at the ways we are constantly bombarded with messages without realising it. It helps me understand how and why some ideologies become common sense and how we need to question and challenge them. I now realise that the creative industries have a powerful influence on society."



# Philosophy and Ethics

**Exam Board:**

OCR

**Course Specification:**

H573

**Qualification obtained:**

OCR A Level in Religious Studies

**Lead Teacher:**

Ms Shah

**Email:**

s.shah@parkhighstanmore.org.uk

## Subject Overview

In philosophy of religion learners will study philosophical issues and questions raised by religion and belief. These include arguments regarding the existence or non-existence of God, the nature and influence of religious experience and the problems of evil and suffering. They will also explore philosophical language and thought through significant concepts and the works of key thinkers, illustrated in issues or debates in the philosophy of religion.

Religion and ethics is characterised by the study of ethical language and thought, with exploration of key concepts and the works of influential thinkers. Ethical theory will also be applied to issues of importance; namely euthanasia, business ethics, and sexual ethics.

Developments in religious thought provides an opportunity for the systematic study of one religious tradition Christianity. This will include the exploration of religious beliefs, values, teachings and practices that shape religious identity, as well as sources of wisdom and authority. Also central are the ways in which religious traditions have developed over time, and religious responses to challenges and significant contemporary social issues.

## Progression Routes:

As a humanities-based subject philosophy & Ethics will open a range of pathways post-18 including law, forensic, social work, arts, teaching and medicine.

## Subject requirements:

- Grade 6 in Philosophy and Ethics
- Grade 5 in English Language
- Grade 4 in English Literature
- Grade 4 in Mathematics

*"It allows us to think creatively with finding our way around philosophical arguments and encourages us to always look to see the bigger picture"*

# Physical Education

**Exam Board:**

OCR

**Course Specification:**

H555

**Qualification obtained:**

OCR A Level in Physical Education

**Lead Teachers:**

Mr Byrne

**Email:**

[abyrne38.310@parkhighstanmore.org.uk](mailto:abyrne38.310@parkhighstanmore.org.uk)

## Subject Overview

The content has been designed to allow learners to study Physical Education in an academic setting, enabling them to critically analyse and evaluate their physical performance and apply their experience of practical activity in developing their knowledge and understanding of the subject.

This specification will create confident, independent thinkers and effective decision makers who can operate effectively as individuals or as part of a team – all skills that will enable them to stand out and effectively promote themselves as they progress through life.

The examined components will provide the knowledge and understanding which underpin the non-exam assessment (NEA). The NEA within this specification allows learners to explore an activity in detail as a performer or coach, chosen from a wide variety of sporting activities. Learners will also analyse and evaluate performance in a chosen activity as part of their NEA.

This course will prepare learners for the further study of PE or sports science courses as well as other related subject areas such as psychology, sociology and biology. Learners will also develop the transferable skills that are in demand by further education, Higher Education and employers in all sectors of industry.

## Progression Routes:

This course will prepare learners for the further study of PE or sports science courses such as Physiotherapy, Sports Therapy, Sports Coaching, Physical Education teaching, Leisure Management as well as other related subject areas such as psychology, sociology and biology.

## Subject requirements:

- Grade 6 in Sport Science
- Grade 5 in English Language
- Grade 4 in English Literature
- Grade 4 in Mathematics

“A course that allows you to do both theoretical and practical aspects combined and enables you to have a full grasp of Physical Education and Science. There are a number of different modules which offer you a variety of options that suit many individuals. Overall it is a great subject and very different from most other subjects that are more classroom based”



# Psychology

**Exam Board:**

AQA

**Course Specification:**

7182

**Qualification obtained:**

AQA Advanced Level GCE in Psychology

**Lead Teacher:**

Mrs Unadkat

**Email:**

vbackory.310@parkhighstanmore.org.uk

## Subject Overview

A-Level Psychology offers an engaging and effective introduction to Psychology. Students will learn the fundamentals of the subject and develop skills valued by Higher Education (HE) and employers, including critical analysis, independent thinking and research. Psychology will look more in-depth to the following questions:

- Why do people behave the way they do?
- Why do people conform? Why do people obey?
- How do we remember and why do we forget?
- How do our earliest relationships influence our later ones?
- What happens when you cut a brain in half?
- Why do phobias exist?
- How can we treat depression?
- Does free will exist?
- Is there such a thing as a male or female brain?
- How do we tell the difference between science and pseudoscience?
- Are people born or made criminal?

## Progression Routes:

Psychology is a great subject to study because it will not only give you several transferable skills, it will also teach you more about the way people think. An understanding of the human mind is useful in several careers.

Possible degree options according to bestcourse4me.com, the top seven-degree courses taken by students who have an A-level in psychology are Psychology, English studies, Sociology, Business studies, Teaching, Sport and exercise science and Law.

## Subject requirements:

- Grade 5 in English Language
- Grade 4 in English Literature
- Grade 5 in Mathematics

*"Psychology is interesting as we learn new things about ourselves and how we work as humans."*

# Sociology

**Exam Board:**

AQA

**Course Specification:**

7192

**Qualification obtained:**

AQA Advanced Level GCE in Sociology

**Lead Teachers:**

Mrs Unadkat

**Email:**

vbackory.310@parkhighstanmore.org.uk

## Subject Overview

A Level Sociology offers an engaging and effective introduction to Sociology. Students will learn the fundamentals of the subject and develop skills valued by higher education (HE) and employers, including critical analysis, independent thinking and research. Sociology will look more in-depth to the following questions:

- Are we products of nature or nurture?
- How does the hidden hand of society influence our behaviour?
- Is there such a thing as free will?
- Is the education system fair?
- What is the function of the family in modern society?
- Is the education system fair?
- Are criminals born or made?
- Why are women paid less than men?
- Is religion disappearing or changing?
- What is the role of the media in society?

## Progression Routes:

Studying sociology at university can give you a whole host of exciting career options, including: Social work, Human resources, Advertising, Policing, Marketing, Journalism, Law, Teaching and many more.

According to bestcourse4me.com, the top six-degree courses taken by students who have an A-level in sociology are Sociology, Psychology, English studies, Business studies, Law and Teaching.

## Subject requirements:

- Grade 5 in English Language
- Grade 4 in English Literature
- Grade 4 in Mathematics

“Sociology has given me a wider understanding of the world around me, where I am able to question what is wrong with parts of society and investigate how we could fix them.”

“I enjoy sociology as it allows me to question society’s norms and values and why we live our lives the way we do. It also reveals the dark side of society and the inequalities that are present.”



# German

**Exam Board:**

AQA

**Course Specification:**

7692

**Qualification obtained:**

AQA Advanced Level GCE in Spanish

**Lead Teacher:**

Ms Gorman

Ms Calero

**Email:**

[l.gorman@parkhighstanmore.org.uk](mailto:l.gorman@parkhighstanmore.org.uk)

[pwilson29.310@parkhighstanmore.org.uk](mailto:pwilson29.310@parkhighstanmore.org.uk)

## Subject Overview

The A-level builds on the knowledge, understanding and skills gained at GCSE. It constitutes an integrated study with a focus on language, culture and society. It fosters a range of transferable skills including communication, critical thinking, research skills and creativity, which are valuable to the individual and society. Students must also study one film and one book, appreciating, analysing and being able to respond critically in writing in German to the work they have studied. The content is suitable for students who wish to progress to employment or to further study.

## Progression Routes:

Post-18 study: Languages are considered by the Russell Group as a “facilitating” subject for degree courses. These are subjects which are preferred or required as they leave open a wide range of options for university study.

Post-18 employment: Languages are an invaluable skill to have. Having a language can increase your salary from 8 to 20% and gives you a head start on other potential employees.

(Source: [http://www.whystudylanguages.ac.uk/post16/why\\_languages/#toc\\_1](http://www.whystudylanguages.ac.uk/post16/why_languages/#toc_1))

## Subject requirements:

- Grade 6 in Language
- Grade 5 in English Language
- Grade 4 in English Literature
- Grade 4 in Mathematics

**Exam Board:**

AQA

**Course Specification:**

7692

**Qualification obtained:**

AQA Advanced Level GCE in Spanish

**Lead Teacher:**

Ms Gorman

Ms Calero

**Email:**

[l.gorman@parkhighstanmore.org.uk](mailto:l.gorman@parkhighstanmore.org.uk)

[ncalero.310@parkhighstanmore.org.uk](mailto:ncalero.310@parkhighstanmore.org.uk)

## Subject Overview

The A-level builds on the knowledge, understanding and skills gained at GCSE. It constitutes an integrated study with a focus on language, culture and society. It fosters a range of transferable skills including communication, critical thinking, research skills and creativity, which are valuable to the individual and society. Students must also study one film and one book, appreciating, analysing and being able to respond critically in writing in Spanish to the work they have studied. The content is suitable for students who wish to progress to employment or to further study.

## Progression Routes:

Post-18 study: Languages are considered by the Russell Group as a “facilitating” subject for degree courses. These are subjects which are preferred or required as they leave open a wide range of options for university study.

Post-18 employment: Languages are an invaluable skill to have. Having a language can increase your salary from 8 to 20% and gives you a head start on other potential employees.

## Subject requirements:

- Grade 6 in Language
- Grade 5 in English Language
- Grade 4 in English Literature
- Grade 4 in Mathematics

*“The journey from GCSE Spanish to A’Level Spanish has been amazing. Learning about the Hispanic culture sounds daunting but it is truly fascinating. Choosing Spanish as an A’Level was one of the best decisions I have made.”*



# Applied Science

**Exam Board:**

Edexcel/Pearson

**Course Specification:**

601/7434/1

**Qualification obtained:**

BTEC Level 3 National Certificate in Applied Science

**Lead Teacher:**

Miss Selva

Mr Bury

**Email:**

[rselvarajah.310@parkhighstanmore.org.uk](mailto:rselvarajah.310@parkhighstanmore.org.uk)

[mbury.310@parkhighstanmore.org.uk](mailto:mbury.310@parkhighstanmore.org.uk)

## Subject Overview

The Pearson BTEC Level 3 National Certificate in Applied Science is equivalent in size to one A Level. Apart from applied science sector specific content, the requirements of the qualification mean students develop the transferable and higher order skills that are highly regarded by both HE and employers. For example, carrying out practical laboratory tasks, planning investigations, collecting, analysing and presenting data, and reviewing and refining the methodology of practical and laboratory-based work. You will also develop other transferable skills such as:

- Working as part of team – this is used extensively in science since many heads are better than one. Larger tasks can be split into smaller tasks mirroring the way you would work in industry.
- Problem solving - you will be set several assignments that require you to analyse the question, find out what you need to do and who you need to consult in order to solve the problem.
- Research skills – you will be expected to research a wide variety of sources including the internet, books and scientific journal articles.
- Organisational skills – a key part of BTEC studies is meeting deadlines and organising your work – as would be expected when working in the sector. IT skills – It is crucial that you are able to use IT skills to complete and organise your work. You will be supported and helped throughout your course to develop these skills.

## Progression Routes:

There is a wide range of opportunities including degree courses, apprenticeships, and careers that this qualification would enable students to access.

## Subject requirements:

- Grade 4 -4-4 in Separate Science OR Grade 4-4 in Combined Science
- Grade 4 in English Language
- Grade 4 in English Literature
- Grade 4 in Mathematics

*"I really enjoy applied science as it gives me an insight into a variety of different topics which will allow me to get one step closer to my ideal job."*

**Exam Board:**

Edexcel

**Course Specification:**

9BIO

**Qualification obtained:**

Pearson Edexcel Level 3 Advanced GCE in Biology B

**Lead Teachers:**

Ms Bagoandas

**Email:**

[nbagoandas3.310@parkhighstanmore.org.uk](mailto:nbagoandas3.310@parkhighstanmore.org.uk)

## Subject Overview

Biology A-level is designed to extend your understanding of the structure and function of living things and develop your ability to apply your understanding to explaining real-life and practical contexts. Practical work, mathematical skills and applying your knowledge to explain data forms an integral part of the course and there are 16 core practicals on which you will be assessed on these skills in class. In addition to practical investigations, you will study the following topics in-depth:

- Biological molecules
- Exchange and transport
- Modern genetics
- Ecosystems
- Cells and viruses
- Energy for biological processes
- Origins of genetic variation
- Classification
- Microbiology and pathogens
- Control systems

## Progression Routes:

Biology is a subject that can open doors for many opportunities at university and for future careers. It provides students with a range of transferable skills. It can lead directly to careers based on Science and Research, Medicine and Healthcare, Agriculture, Sports and Fitness, Engineering as well as the Police and Emergency Services.

## Subject requirements:

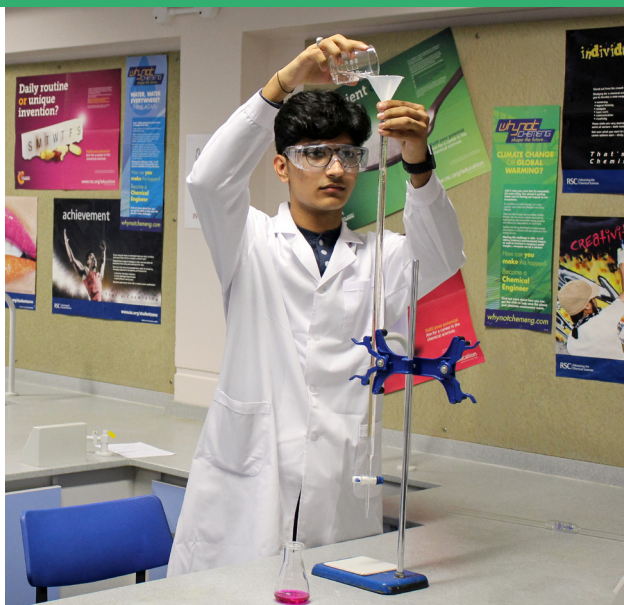
- Grade 6 in Biology and a 6 in at least one of the other of the Separate Sciences at OR Grade 6-6 in Combined Science
- Grade 5 in English Language
- Grade 4 in English Literature
- Grade 5 in Mathematics

“Although A-level Biology is difficult at first, it gets easier once you learn the content properly. It is made to be really enjoyable! The teachers support you a lot.”

“Biology has been interesting, and the lessons are creatively planned – not just standard and boring! It has been an enjoyable course – especially the practical’s!”



# Chemistry

**Exam Board:**

OCR

**Course Specification:**

H432

**Qualification obtained:**

OCR A Level in Chemistry

**Lead Teacher:**

Miss Selva

**Email:**

[rselvarajah.310@parkhighstanmore.org.uk](mailto:rselvarajah.310@parkhighstanmore.org.uk)

## Subject Overview

Chemistry A – a content-led approach. A flexible approach where the specification is divided into topics, each covering different key concepts of chemistry. Teaching of practical skills is integrated with the theoretical topics and they're assessed both through written papers and, for A level only, the Practical Endorsement. OCR's A Level in Chemistry A specification aims to encourage learners to:

- Develop essential knowledge and understanding of different areas of the subject and how they relate to each other
- Develop and demonstrate a deep appreciation of the skills, knowledge and understanding of scientific methods
- Develop competence and confidence in a variety of practical, mathematical and problem-solving skills
- Develop their interest in and enthusiasm for the subject, including developing an interest in further study and careers associated with the subject
- Understand how society makes decisions about scientific issues and how the sciences contribute to the success of the economy and society

## Progression Routes:

Chemistry is one of the most highly respected subjects by employers and universities. It teaches students a range of different skills that are transferable to many different situations. Some chemistry students have gone on to be Doctors, Lawyers, Engineers, Accountants, Bankers, Pharmacists and many more careers.

## Subject requirements:

- Grade 6 in Chemistry and a 6 in at least one of the other of the Separate Sciences at OR Grade 6-6 in Combined Science
- Grade 4 in English Language
- Grade 4 in English Literature
- Grade 5 in Mathematics

*"Chemistry has provided me with the opportunity to understand how different reactions work at a molecular level and this has allowed me to solve problems by looking at things in many different logical ways."*

*"Doing practicals to understand our classwork is what makes Chemistry so interesting. Chemistry is so fun and doing it for A-Levels has made me so satisfied."*

**Exam Board:**

OCR

**Course Specification:**

H556

**Qualification obtained:**

OCR A Level in Physics A

**Lead Teachers:**

Mr Bury

Mr Dunne

Mr Potts

**Email:**

[mbury.310@parkhighstanmore.org.uk](mailto:mbury.310@parkhighstanmore.org.uk)

[rdunne8.310@parkhighstanmore.org.uk](mailto:rdunne8.310@parkhighstanmore.org.uk)

[apotts.310@parkhighstanmore.org.uk](mailto:apotts.310@parkhighstanmore.org.uk)

## Subject Overview

The course covers exciting recent developments in the field of physics. The year 1 content deals with traditional topics such as Mechanics, Electricity, Waves and Quantum Physics. Practical skills are developed where students develop skills in recording, analysing and evaluating data.

During the second year, some of these topics are revisited in more depth. Topics such as Thermal Physics, Simple Harmonic Motion, Particle Physics, Medical Physics and Astrophysics are included. Practical skills similar to the first year are developed but they require a more mathematical treatment.

## Progression Routes:

A physics education equips a person to work in many different and interesting places—in industrial and government laboratories, in universities, as astronauts, pilots, engineers and even as physics teachers! In addition, many physicists leave the lab behind and work at newspapers and magazines, in government, and in finance and banking; places where their problem-solving abilities and analytical skills are great assets.

A-Level Physics can lead to university courses in Engineering, Physiotherapy, Meteorology amongst others.

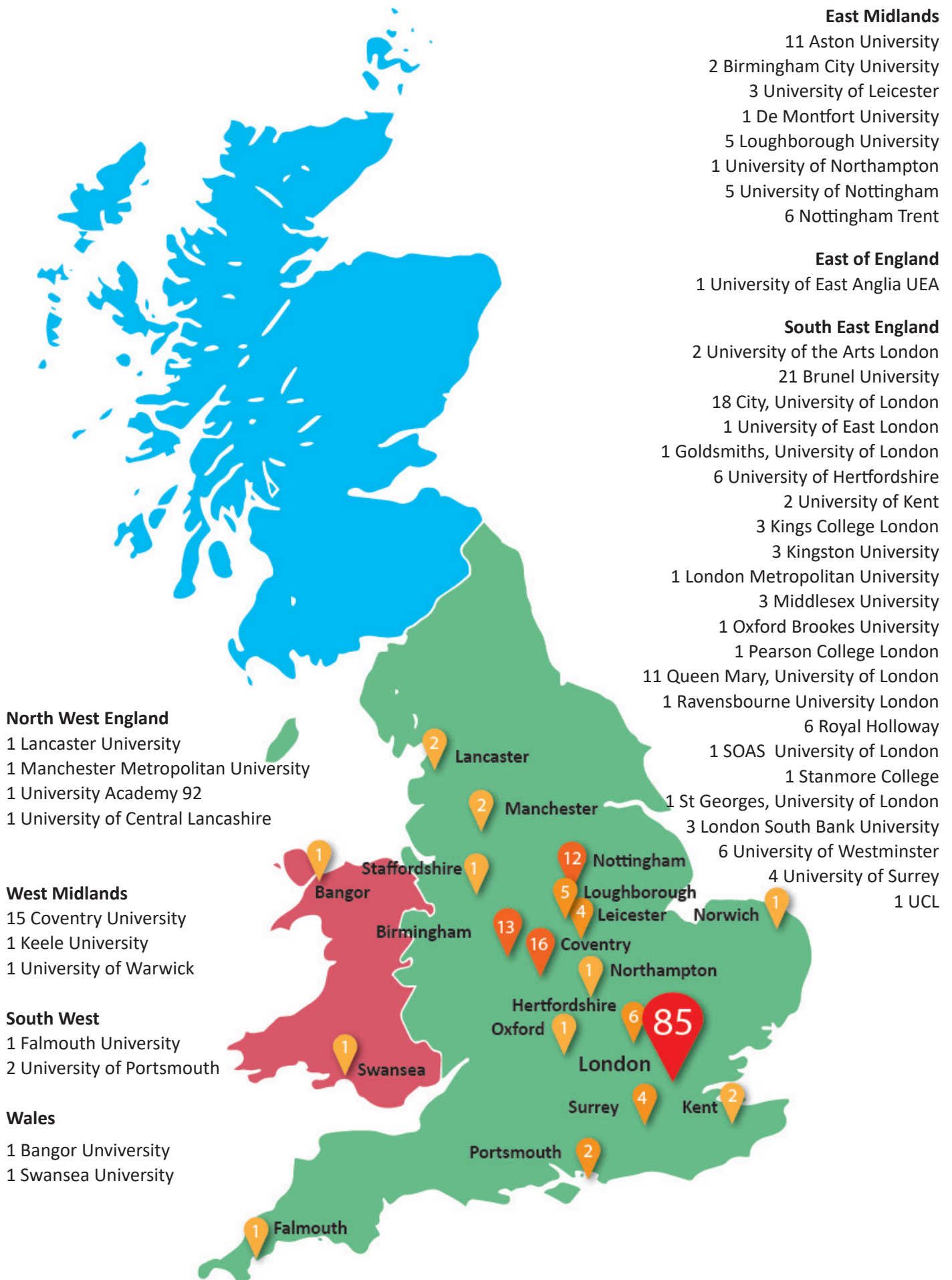
## Subject requirements:

- Grade 6 in Physics and a 6 in at least one of the other Separate Sciences or Grade 6-6 in Combined Science
- Grade 4 in English Language
- Grade 4 in English Literature
- Grade 5 in Mathematics

“Physics was by far my favourite subject. The teachers are outstanding and their love of the subject is reflected in the lessons and makes the class an incredibly enjoyable experience. The work, whilst not easy, is simple to master when partnered with hard work and dedication, not to mention the easy to follow and student friendly textbook. The practicals are all very interesting as it is great to put all of the theoretical knowledge to use.”



# Destinations 2018-20



# Success Stories

We are very proud of our recent A Level results. We have enjoyed supporting many young people as they move through Year 12 and 13 and are delighted to report that we are regularly judged to be well above national benchmarks.



Kayan

A\*  
Maths

A\*  
Psychology

A  
Philosophy & Ethics

Destination:

Loughborough University to study Sport and Exercise Science

A\*  
Maths

A  
Biology

A  
Chemistry

Destination:

St George's, University of London to study Biomedical Science

Janhavi



Priya

A  
Economics

A  
Maths

A  
Psychology

Destination:

King's College London to study Electronic Engineering

Dhyana



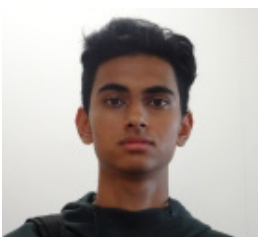
A\*  
English Literature

A  
Media

A\*  
Sociology

Destination:

University of Hertfordshire – Film and TV (Production)



Shivam

C  
English Literature

B  
Philosophy & Ethics

C  
Sociology

Destination:

Royal Holloway, Law with Criminology and a Year in Industry

Sutharsan



A  
English Literature

B  
History

A  
Philosophy & Ethics

Destination:

Loughborough University to study Sport and Exercise Science



# Students' experiences

---



## Visnukaa

### Studying:

Sociology, Psychology and BTEC Law

### What made you choose Park High School Sixth Form?

I chose Park High Sixth Form as I had already been here for high school. I enjoyed the environment and most of the teachers.

### How are your post-16 programmes of study going?

It's going well, I am really enjoying all my subjects. The teachers are very supportive and help you whenever you need it.

### Would you recommend Park High?

Yes, it's a great school and the Sixth Form has such a good, live atmosphere with students would like to be in. The teachers are very helpful with your subjects and if you need to talk to someone, they are always there to speak to.

---

## Pranay

### Studying:

Maths, Physics and Chemistry

### What made you chose Park High School Sixth Form?

I knew the teachers were supportive and there would be more one to one help.

### What are you planning on doing after Sixth Form?

I am planning on going to uni to study Chemical Engineering in London.

### Would you recommend Park High Sixth Form?

Yes, it may be small but it is a family.

---



## Ryan

### Studying:

PE, Maths, Economics

### What made you choose Park High School Sixth Form?

I chose Park High Sixth Form because it offered a very wide range of subjects and because of the good feeling you get when you enter the school.

### How are your post-16 programmes of study going?

Right now my A-Levels are going well, and I am revising very hard to make sure I keep up with the high standards that the school sets for all students.

### Would you recommend Park High?

I would definetley recomment Park High Sixth Form because the students are very welcoming and the teachers help you with anything you need during your time here.

---

## Jasveer

### Studying:

Chemistry, Psychology and Maths

### What made you choose Park High School Sixth Form?

Park High Sixth Form has a friendly atmosphere and I'm glad I stayed.

### How are your post-16 programmes of study going?

So far, I'm enjoying all my subjects & my teachers ensure I'm understanding the content.



# Entry Requirements

In this table 'Subject' means a GCSE grade in that subject. For Science 2 x grade 6 in Combined Science or Separate Science is required. If there is a star, then there is no requirement for subject specific prior attainment. If the subject was taken previously then a 6 is required or Merit in Level 2 BTEC

For A Level programmes: Students are required to have achieved at least 6 x 9-4 grades including English Literature, English Language and Mathematics at GCSE and usually have at least grade 6 in any subject studied at GCSE level which they wish to continue at A level.

For BTEC programmes: Students are required to have achieved at least 6 x 9-4 grades including English Literature, English Language and Mathematics at GCSE and either a Merit or grade 4 in the subject if taken.

We hope to expand our Level 3 Vocational Education offer for September 2021. Any additional courses will be widely publicised in due course

A Level Courses	Entrance Requirements			
	English Language	English Literature	Maths	Subject
Art & Design	5	4	4	6
Applied Science BTEC: 1 A Level equivalent	4	4	4	4
Biology	5	4	5	6,6
Business	5	4	5	5
Chemistry	4	4	5	6,6
Computer Science	5	4	5	6
Drama: co-delivered with Canons High	5	4	4	6
D&T- Product Design	5	5	5	6
Economics	5	4	5	*
English Literature	6	6	4	6
Geography	5	4	5	6
German	5	4	4	6
Government & Politics: delivered by Canons High	5	5	4	*
History	5	4	4	6
Maths	4	4	6	6
Further Maths	5	4	8	8
Media	4	4	4	*
Spanish	5	4	4	6
Philosophy and Ethics	5	4	4	6
Physical Education	5	4	4	6
Physics	4	4	5	6,6
Psychology	5	4	5	*
Sociology	5	4	4	*
Business BTEC: 1 A Level equivalent: delivered by Canons High	4	4	4	Merit
Law BTEC: 1 A Level equivalent: delivered by Canons High	4	4	4	*





## SIXTH FORM



TRANSFORMING PRACTICE IN  
**Variety of teaching  
approaches**

SSAT Framework for Exceptional Education



TEACHER DEVELOPMENT TRUST  
**NETWORK  
SILVER AWARD**

Park High School, Thistlecroft  
Gardens, Stanmore, HA7 1PL

Phone: 020 8952 2803

Fax: 020 8952 6975

Email: [info@parkhighstanmore.org.uk](mailto:info@parkhighstanmore.org.uk)

Website: [www.parkhighstanmore.org.uk](http://www.parkhighstanmore.org.uk)